

PARTS AND OPERATION MANUAL



WetScreed — K200

© COPYRIGHT 2001, MULTIQUIP INC.

Revision #2 (03/12/01)



MULTIQUIP INC.
18910 WILMINGTON AVE.
CARSON, CALIFORNIA 90746
310-537-3700
800-421-1244
FAX: 310-537-3927

PARTS DEPARTMENT:
800-427-1244
FAX: 800-672-7877
SERVICE DEPARTMENT:
800-478-1244
FAX: 310-537-4259

E-mail: mq@multiquip.com • [www:multiquip.com](http://www.multiquip.com)
Atlanta • Boise • Dallas • Houston • Newark
Montreal, Canada • Manchester, UK
Rio De Janeiro, Brazil • Guadalajara, Mexico



WARNING



CALIFORNIA — Proposition 65 Warning

Engine exhaust and some of its constituents, and some dust created by power sanding, sawing, grinding, drilling and other construction activities contains chemicals known to the State of California to cause cancer, birth defects and other reproductive harm. Some examples of these chemicals are:

- Lead from lead-based paints.
- Crystalline silica from bricks.
- Cement and other masonry products.
- Arsenic and chromium from chemically treated lumber.

Your risk from these exposures varies, depending on how often you do this type of work. To reduce your exposure to these chemicals: **ALWAYS** work in a well ventilated area, and work with approved safety equipment, such as dust masks that are specially designed to filter out microscopic particles.

HERE'S HOW TO GET HELP

*PLEASE HAVE THE MODEL AND SERIAL NUMBER
ON-HAND WHEN CALLING*

PARTS DEPARTMENT

800-427-1244 or 310-537-3700

FAX: 800-672-7877 or 310-637-3284

SERVICE DEPARTMENT/TECHNICAL ASSISTANCE

800-478-1244 or 310-537-3700

FAX: 310- 537-4259

WARRANTY DEPARTMENT

888-661-4279, or 310-661-4279

FAX: 310- 537-1173

MAIN

800-421-1244 or 310-537-3700

FAX: 310-537-3927

Here's How To Get Help	3
Table Of Contents	4
Parts Ordering Procedures	5
Explanation Of Codes In Remarks Column	6

WET SCREED K200

Safety Instructions	7-8
Specifications	9
What is a Wet Screed	10-11
Operation	12-14
Trouble Shooting	15
Maintenance and Repair	16-17

K 200

Frame	18-19
Electric Drive Unit & Switch	20-21
Electric Drive Unit Components	22-23
Gas Drive Unit & Gas Throttle	24-25

Terms and Conditions Of Sale — Parts	26
--	----

NOTE: *Specification and part number are subject to change without notice.*

- Dealer account number
- Dealer name and address
- Shipping address (if different than billing address)
- Return fax number
- Applicable model number
- Quantity, part number and description of each part
- Specify preferred method of shipment:
 - UPS Ground
 - UPS Second Day or Third Day*
 - UPS Next Day*
 - Federal Express Priority One (please provide us with your Federal Express account number)*
 - Airborne Express*
 - Truck or parcel post

**Normally shipped the same day the order is received, if prior to 2PM west coast time.*

Earn Extra Discounts when you order by FAX!

All parts orders which include complete part numbers and are received by fax qualify for the following extra discounts:

<u>Number of line items ordered</u>	<u>Additional Discount</u>
1-9 items	3%
10+ items**	5%

Get special freight allowances when you order 10 or more line items via FAX!**

- UPS Ground Service at no charge for freight
- PS Third Day Service at one-half of actual freight cost

No other allowances on freight shipped by any other carrier.

**Common nuts, bolts and washers (all items under \$1.00 list price) do not count towards the 10+ line items.

DISCOUNTS ARE SUBJECT TO CHANGE

Fax order discount and UPS special programs revised June 1, 1995

**Extra Fax Discount
for Domestic USA
Dealers Only**

**Up to 5%
extra savings!**

**UPS
Special**
For faxed orders only

**Now! Direct TOLL-FREE access
to our Parts Department!**

Toll-free nationwide:

800-421-1244

Toll-free FAX:

800/6-PARTS-7 • 800-672-7877

EXPLANATION OF CODE IN REMARK COLUMN

How to read the marks and remarks used in this parts book.

Section 1: Items Found In the “Remarks” Column

Serial Numbers-Where indicated, this indicates a serial number range (inclusive) where a particular part is used.

Model Number-Where indicated, this shows that the corresponding part is utilized only with this specific model number or model number variant.

Section 2: Items Found In the “Items Number” Column

All parts with same symbol in the number column:

*, #, +, %, or ■, belong to the same assembly or kit.

Note: If more than one of the same reference number is listed, the last one listed indicates newest (or latest) part available.

NOTE: The contents of this parts catalog are subject to change without notice.

SAFETY INSTRUCTIONS

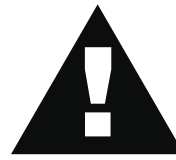
The Wet Screed models K 200 have been developed and tested in accordance with strict International Safety Standards.

This section contains general advice.

Regular maintenance of the Wet Screed **promotes** safe operation.

- When in doubt and/or when you are operating the Wet Screed for the first time, always read the necessary instructions in this manual.
- Wear safety shoes with extra protection (steel caps and anti-slip soles).
- Place the wires between the electrical source and the work area in such a way that they can not be damaged or your co-workers cannot trip over them.
- Do not leave any tools or parts laying around on the work floor, as this can cause accidents.
- Watch where you are going; the ground can be slippery.
- Take care that you do not injure yourself on objects, such as scaffolding and reinforcement materials, which can be found directly or indirectly in the working area.
- Pay attention to your own safety and that of your fellow workers.
- Be careful when lifting and carrying the Wet Screed. Do not bend forwards when picking up the apparatus, but bend your knees. Ensure that the working area is within your reach, so that you do not have to bend forward.
- Ensure that you are qualified (familiar with the contents of this manual) to operate and carry out light maintenance work to the Wet Screed.
- Check that the electrical source complies with the local regulations.
- Use grounded extension cords, when it is necessary to use extension cords.
- Use an electrical source which is provided with a ground leakage switch between the electrical mains and the Bullfloat.
- Ensure that the wall socket and possible connections between the extension cords are protected against dampness.
- Do not pull the plug out of the wall socket or extension cords by it's cord, use the plug.

The following safety-aspects specifically apply to those Whiteman products which are equipped with a gas-engine.



■ Do not use the Wet Screed with a gas-engine indoors or in poorly ventilated places, such as pits etc.

■ Make sure that there is sufficient ventilation in spaces which are surrounded by walls. Never inhale exhaust gases, they can damage your health and that of your fellow workers.

- Wear working-gloves, safety glasses and protective clothing during refueling.
- Make sure that there is sufficient ventilation during refueling.
- Refuel only after the engine has cooled off sufficiently.



Refueling of fuel, while the engine is hot, might lead to a very dangerous situation including an explosion and fire.

■ It is strictly forbidden to refuel:

- in the direct vicinity of a open fire or other flammable materials,
- in explosion endangered places.



■ To avoid getting an electric shock, do not touch the high-tension cable or spark plug cap while the engine is running.

General Safety Instructions

- When operating the Wet Screed wear ear protection, safety glasses, a safety helmet, gloves which do not conduct electricity and protective clothing.
- Ensure that all symbols on the Wet Screed — can always be clearly read.
- Regularly check the Wet Screed's connections.
- When cleaning the Wet Screed, ensure that no water or cleaning detergents, under high pressure, get into the motor housing or plug connections.
- When the Wet Screed is not being used for long periods of time, then it must be store in a dry and clean area.

SAFETY INSTRUCTIONS

Important Safety Checks for the electrical Wet Screed

- Check the feeder cable and extension cords outer casing before you connect the Wet Screed to the electrical mains.



- Check the feeder cable's attachment on the bullfloat, before you connect the Wet Screed to the electrical mains. The cable must be correctly attached to the bullfloat .

- Ensure that the feeder cable does not graze past any sharp objects.

- The use of extension cords are permitted, if they are completely watertight.



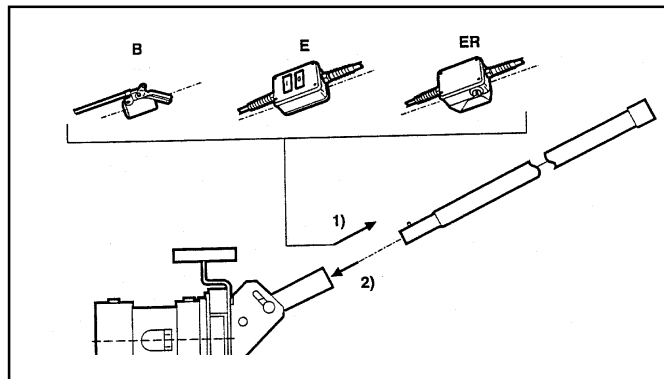
- Switch the Wet Screed "off" when the electrical power cuts off. This prevents the Bullfloat from starting suddenly when the electrical power comes on again.

- Check the feeder cable and extension cord's attachments regularly. When the Wet Screed is in operation, the plugs can loosen due to the vibrations.

- Disconnect the electrical supply to the Wet Screed, before you start to clean or service the Wet Screed.

- Connect the Wet Screed to an alternating voltage source of 110VAC, which is provided with a ground switch, with a frequency of 50-60 Hz.
- Check that the ventilation openings in the motor housing are free from dirt and moisture.
- Regularly check the connections of the feeder cable to the switch.

Explanation of the utilized safety symbols.

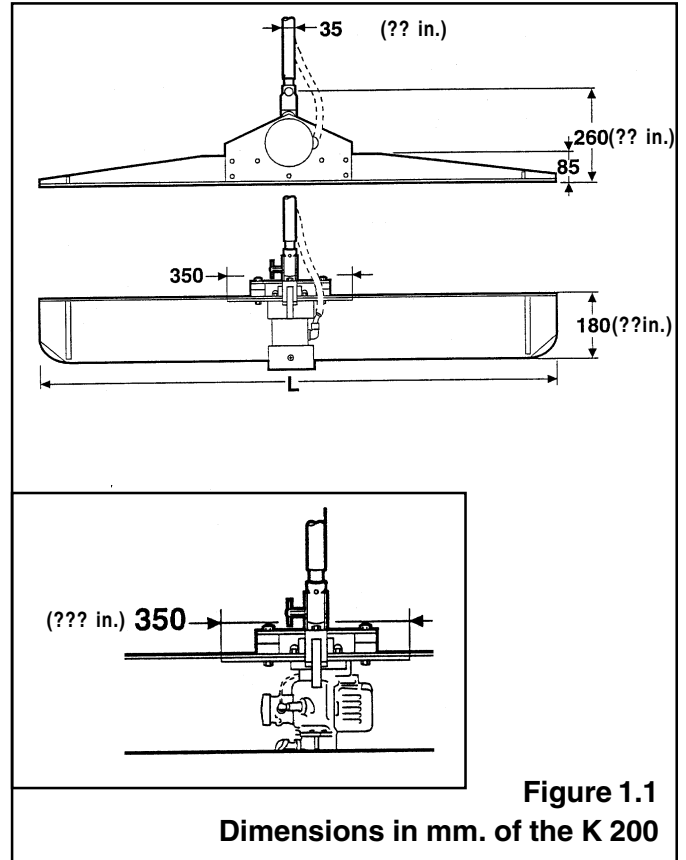


1. Safety glasses, safety helmet and ear protection compulsory.
2. Gloves compulsory.
3. Safety shoes with extra protection compulsory.
4. Dangerous electrical voltage.
5. Before opening the motor housing remove the plug.
6. Inflammable material.
7. Pls. read the operation-instructions
8. Careful, danger!

Tip: Ask the manufacturer for clarification, if you have any questions about any of these safety instructions.

SPECIFICATIONS

	K 200 (230VAC)	K 200 (2 stroke gas-engine)
Voltage	110VAC 1 Phase/50-60Hz	—
Capacity	350 W	520 W
Revolutions	12000 r/min	12000 r/min
Centrifugal force	1800 N (405 lbs.)	1800 N (405 lbs.)
Mass	1, 5 m (13Kg)	1, 5 m (13Kg)
Fuel	—	2-stroke (mixture)
Mixture	—	1 : 25
Sealing	IP 54, splash proof	IP 54, splash proof
Insulation	Class II Double Insulated	—
Motor protection	Impact and shock proof	—
Design	Portable	Portable
Dimensions drive-unit		
Length	180 mm (?? in.)	150 mm (?? in.)
Width	150 mm (?? in.)	200 mm (?? in.)
Height	140 mm (?? in.)	220 mm (?? in.)



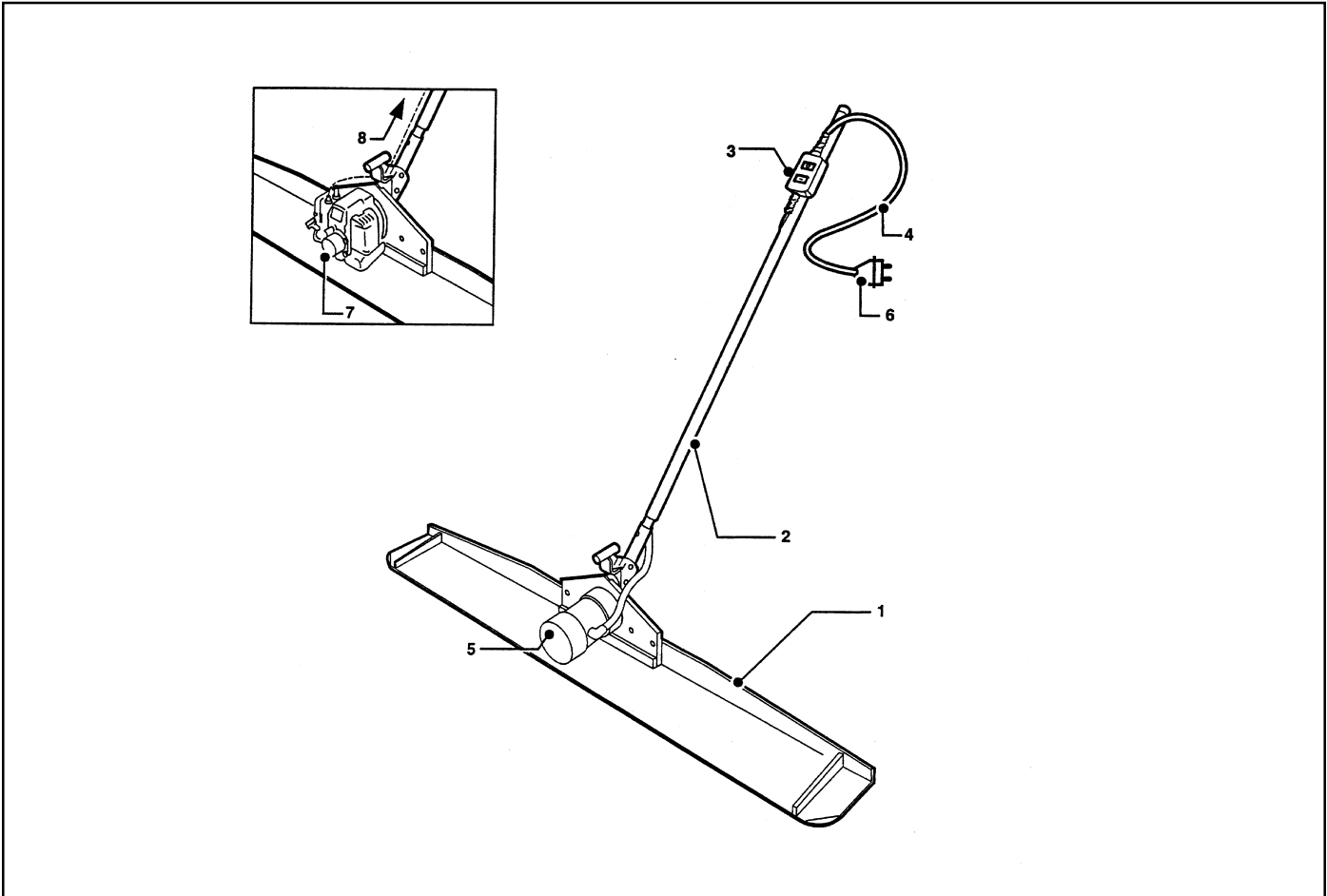


Figure 0.1 View of the most important components

- | | |
|----------------------|------------------------------------|
| 1. Aluminium profile | 6. Drive-unit 110VAC
or 230VAC0 |
| 2. Operating handle | 7. Plug |
| 3. ON/OFF-switch | 8. Gas Engine |
| 5. Cable | 9. Gas throttle |

What is a Wet Screed?

A Wet Screed is a strike-off method where the blade rides on concrete rather than form or rails. Level bases are established in long strip parallel to the forms. Once completed the contractor is then free to "wet screed" the concrete in between the two bases.

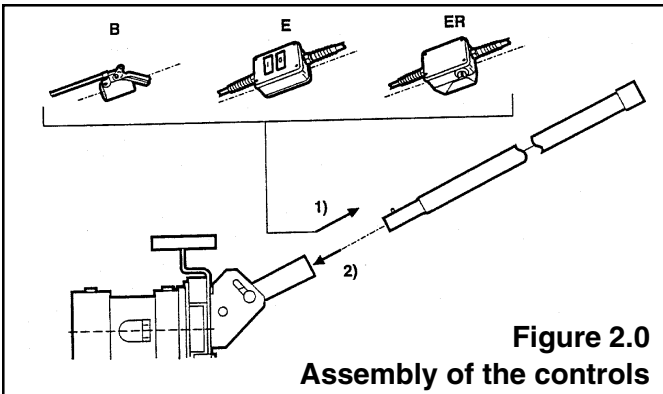
This section describes the operation of the K 200 Wet Screed.

Tip: For the location and description of the Wet Screed's parts, which are mentioned in the text, refer to the illustration figure (page. 9): What is a Wet Screed.

How to assemble the K 200 Wet Screed.

When delivered the Wet Screed is not ready for use. You only have to carry out the following procedures to assemble them:

1. Connect the switch (an electronic speed regulator, or a gas throttle), to the operating handle by means of the bracket and the butterfly nut. Now lock the bracket by tightening the butterfly nut. (Fig. No. 2.0)
2. Stick the operating handle into the shaft of the motor unit frame. Make sure that the operating handle is locked properly.



Operation and use of the Wet Screed

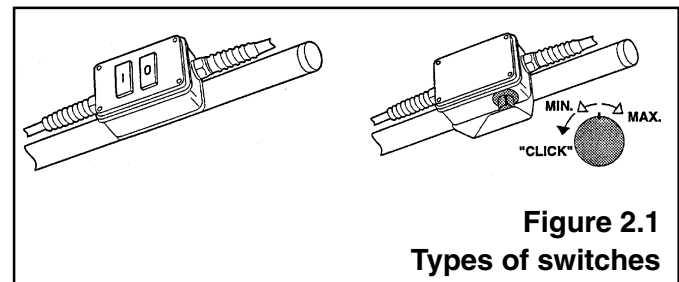
This section describes how to operate and use the Wet Screed. In the text are numbers in brackets. These numbers are position numbers and they correspond to the numbers in the parts list of the corresponding figures.

Careful: Read the safety instructions before you switch on the apparatus.

Careful: Prevent the **Wet Screed**, from sinking into the concrete. After the motor has been switched on, immediately move the Wet Screed backwards.

Tip: Before the Wet Screed is brought into action, first compact the freshly poured concrete floor with a poker-vibrator while at the same time adjust the height of the floor by means of a laser device.

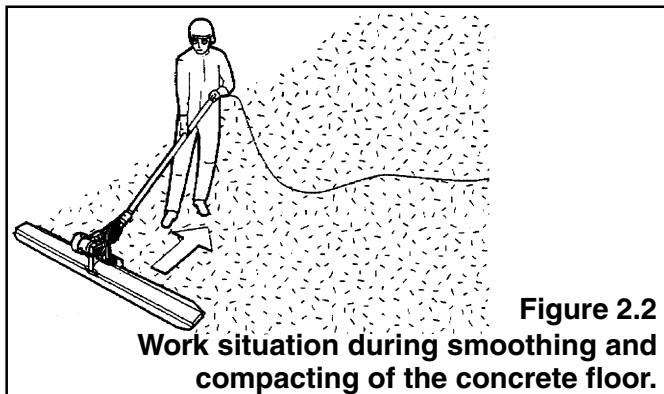
Tip: Pour concrete lanes of approx. 2m wide and approx. 15 m long. You can finish this surface in one pass without any problem.



Tip: When using a low slump concrete, move the Wet Screed slowly across the surface of the concrete. When using a high slump concrete, move the Wet Screed faster across the surface of the concrete.

Operation of the Electric Wet Screed

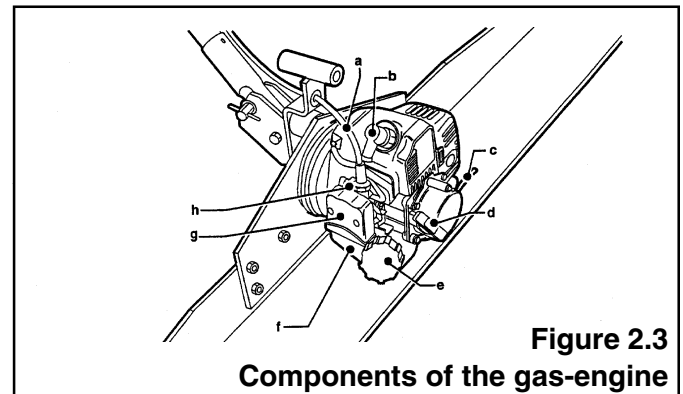
1. Check that the Wet Screed is properly assembled and that the switch is in the 'OFF' position.
2. Put the plug of the drive-unit's feeder cable in the wall socket.
3. Place the Wet Screed in the direct vicinity of where you are going to smooth the surface of the concrete-floor.
4. Place the Wet Screed on the surface of the freshly poured concrete, and turn the speed regulator slowly to the required revolutions.
5. Adjust the trowel blade angle. (read paragraph 2, on page 11)
6. Now start to smooth the surface of the concrete floor by moving the Wet Screed backwards in a slow but steady motion.
7. After having finished one lane of concrete, switch off the Wet Screed immediately, by turning the speed regulator's knob to the position 'Minimal'. You will hear a "CLICK". (Fig. 2.2, on page 11)



Tip: If the processed concrete-surface is not smooth or level enough, repeat the procedures 5,6,7 and 8.

8. Pull the plug of the feeder cable out of the wall socket.
9. After use, place the Wet Screed on a dry and stable surface.

Operation of the Gas Wet Screed



- a. Throttle cable
- b. Spark plug
- c. Overflow pipe
- d. Starter rope
- e. Fuel cap and fuel filter
- f. Fuel tank
- g. Air filter
- h. Carburetor

Starting Procedure

1. Check that the Wet Screed is properly assembled, and the fuel tank is filled.
2. Place the Wet Screed in the direct vicinity of where you are going to smooth the surface of the concrete.
3. Adjust the throttle-lever (1) to the idle-position.(Fig 2.5)

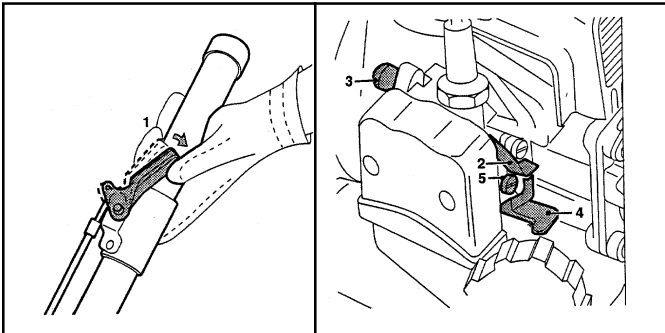


Figure 2.4
Idle position of the throttle-handle and components of the carburetor

4. Put the choke-lever (2) in the upper position.(Fig 2.5)
5. Push simultaneously the black priming pump (3) and the tickler lever (4) (Fig 2.5) until fuel comes out of the overflow pipe (c). (Fig 2.4)

Careful! : When pushing the tickler lever (4) half way down, the fuel will flow directly into the engine and will create starting problems. **Be sure to push the tickler lever fully down.**

Careful! : Never change the adjustment of the main jet screw on the carburetor (5).(Fig 2.5)

6. Open the throttle-handle half way.
7. Give the starter rope (6) (Fig 2.6) a rapid vigorous pull until the engine fires.

WARNING: Do not pull the starter rope all the way. The rope might break. Use 3/4 of the starter rope's length.

8. If you have executed the starting procedure in the correct way, the engine will run after approx. 2 pulls of the starter rope.
9. Allow the engine to run for approx. 10 seconds. Push the choke lever (2) (Fig 2.5) slowly down. The period of time depends on the ambient temperature.

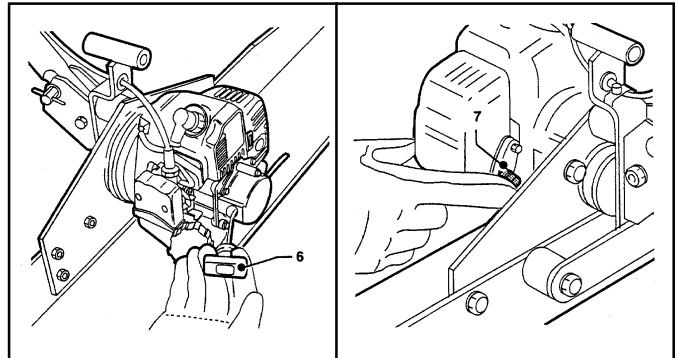
10. After allowing a three-minute warming-up period set the throttle handle to the desired engine speed. The Wet Screed is now ready for use.

Smoothing concrete

11. Adjust the right trowel blade angle. (read paragraph 2, page 11)
12. Smooth the freshly poured concrete.

Tip: Repeat procedure 12 in the event the treated surface is not smooth or level enough.

13. Switch "off" the Wet Screed after you have finished the concrete lane:
— Put the throttle lever (1) in the idle position. (Fig 2.5)



— Press the black stop-button (7) for a couple of seconds until the engine stops. (Fig 2.6)

14. If you do not expect to use the engine for a long period of time, drain the fuel tank of fuel and let the engine run at idle speed until the fuel in the carburetor is used and the engine stops.
15. After use, place the Wet Screed on a dry and clean surface.

WARNING! Make sure to refill the fuel tank before you run out of fuel during operation. Do not let the engine run until all the fuel is used. This might cause starting problems. The average operation time is approx. 45 min. (per tank).

Problem: The Wet Screed does not vibrate in the ON position.

Cause: Fault in the electrical connections of the feeder cable.

Solution: Check the electrical connections to the Wet Screed, switch, plug and feeder cable for breakage.

Replace the faulty part(s).

Problem: The Wet Screed does not get into the required number of revolutions.

Cause: Voltage drop, due to the feeder cable being too long.

Solution: Move the electrical source closer to the working area. Be certain you have the correct wire gauge size for the distance and amp draw.

Problem: The electrical motor rotates irregularly and makes a lot of noise.

Cause:

1. The bearings are worn out, and/or
2. an electrical defect in the stator, and/or
3. a break in the feeder cable.

Solution:

1. Replace the bearings, and/or
2. replace the stator, and/or
3. repair or replace the feeder cable.

Problem: The connected and running Wet Screed rotates irregularly and does not get into the required revolutions.

Cause: Insufficient current supply.

Solution:

Electrical supply via electrical mains; check the plug connections for defects.

Problem: The electrical motor runs irregularly.

Cause: The carbon brushes are worn out.

Solution: Replace the carbon brushes. (Replace every 6-12 months).

Problem: Gas engine does not start.

Cause: There is no, or too little, fuel in the fuel tank. The starting procedure was not carried out in the correct way.

Solution: Fill the fuel tank or repeat the starting procedure.

Problem: The engine starts but runs irregularly.

Cause: The spark plug, the fuel filter or the air filter are dirty.

Solution: Clean or replace the spark plug, the fuel filter or the air filter. See paragraph 4-4 on the next page.

Problem: The engine runs in idle position but stops when increasing the revolutions.

Cause: The choke lever has not been pushed down completely, after the starting procedure.

Solution: Repeat the starting procedure. (Do not prime again). See Section 3, 4 & 5 on page 13.

Problem: Engine smokes excessively.

Cause:

1. Choke lever has not been pushed down all the way.
2. The carburetor is worn out.
3. The engine is worn out.
4. Wrong mixture. (Possibly too much oil)

Solution:

1. Check the position of the choke lever.
2. Replace the worn out parts of the carburetor, (please consult your dealer or the manufacturer).
3. Replace the gas engine.
4. Replace the mixture for the right mixture with the correct proportion: 1 part 2-stroke oil to 25 parts of normal gasoline (1: 25).

Maintenance

Although the Wet Screed has few moving parts, regular maintenance promotes a long and trouble-free life.

Warning: Never use a high pressure cleaner to clean a Wet Screed with an electrical or gas drive unit.

4.3 Cleaning and servicing of the electrical drive unit.

Warning: Cut off the electrical supply to the Wet Screed before carrying out any maintenance activities to the Wet Screed.

In order to achieve a maximum cooling effect the ventilation slots of the electrical drive unit must stay free from dirt and grease. Check them at the end of each working day.

If necessary, clean the motor with a brush or a damp cloth.

4.4 Cleaning and servicing of the gas engine. (refer also to engine manual)

Daily maintenance

— In order to achieve a maximum cooling effect the ventilation openings must stay free from dirt or grease. Check them at the end of each working day.

If necessary, clean them with a brush or a damp cloth.

— For a proper functioning of the carburetor's control mechanism, it is necessary to check the carburetor for concrete or dirt, each time after use. If necessary clean the control mechanism with a brush or a damp cloth.

Maintenance after 20 hours of operation

— How to clean the fuel filter.

(Removal Procedure)

1. Remove the fuel tank cap.
2. Pull out the black rubber tube from the fuel tank. At the end of the tube is the felt-weight assembly. Remove the felt and the felt-weight from the tube and wash out both parts in clean fuel.
3. Insert the felt and the felt-weight into the fuel tank again.

How to clean the air filter.

1. Unscrew the black filter cap from the carburator.
2. Take out the filter element.
3. Wash out the filter element in clean fuel and wring out the filter element.
4. Re-install the filter and the black filter cap.

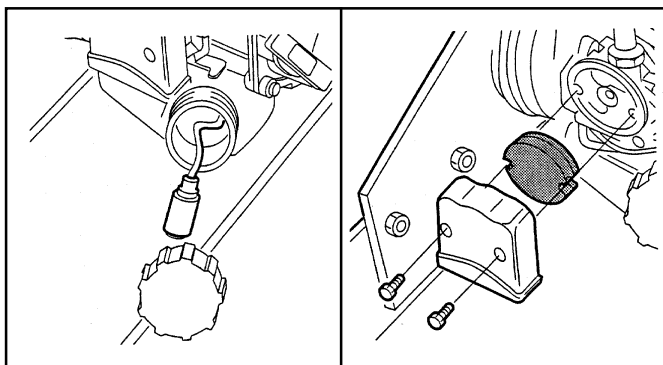


Figure 4.0
Location of the fuel and air filters

WARNING!: When the engine operates in dusty conditions, clean the air filter each day or after each 10 hours of operation.

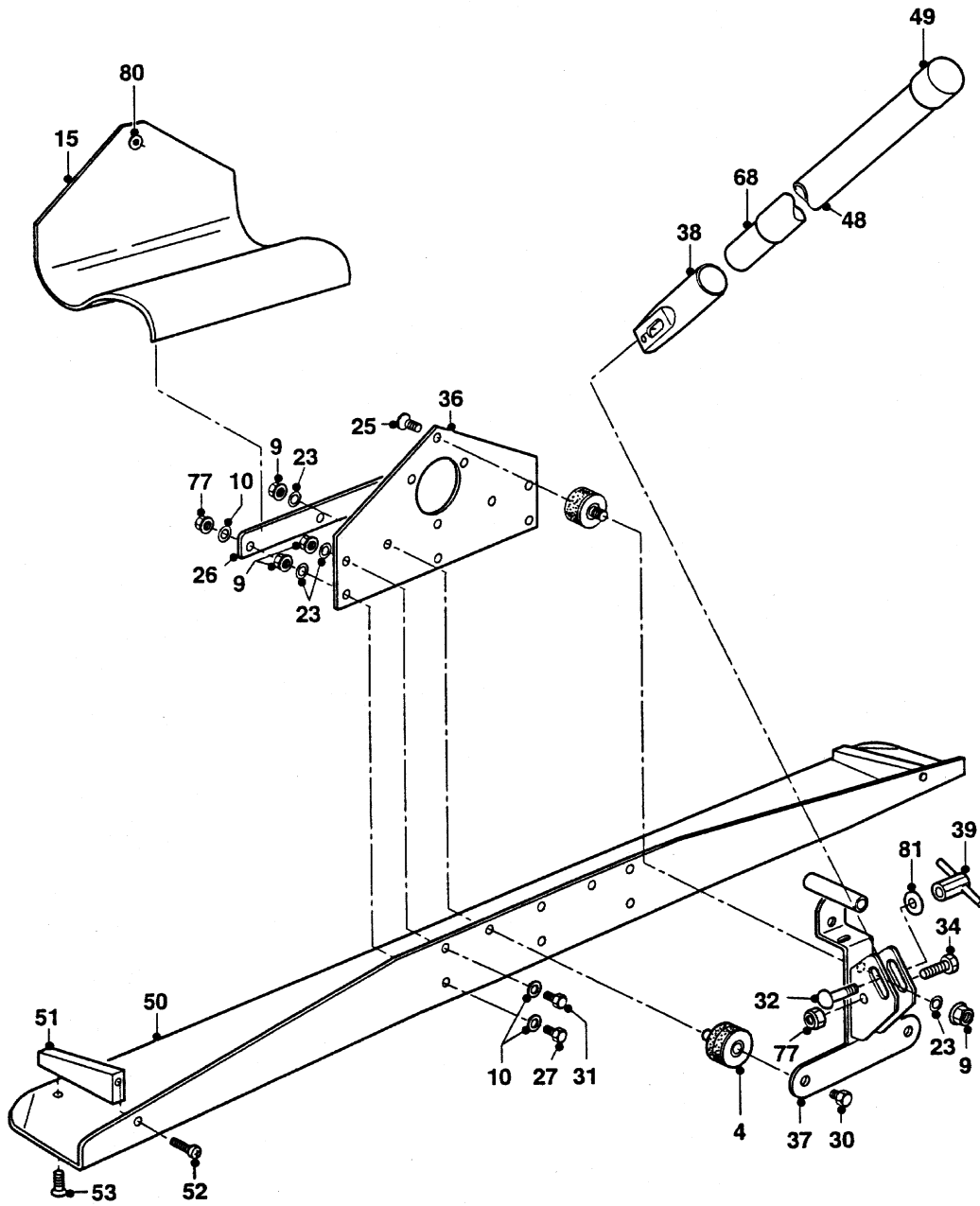
Maintenance after 50 hours of operation

- **Cleaning of the piston.**
Remove the carbon from the upper side of the piston, from the exhaust-ports in the cylinder, from the combustion chamber and from the exhaust.

- **Cleaning of the spark plug.**
Clean off carbon deposits on the spark plug electrode using a plug cleaner or wire brush.
Check electrode gap. If necessary adjust it to between: 0.6 to 0.7 mm.

Longtime storage

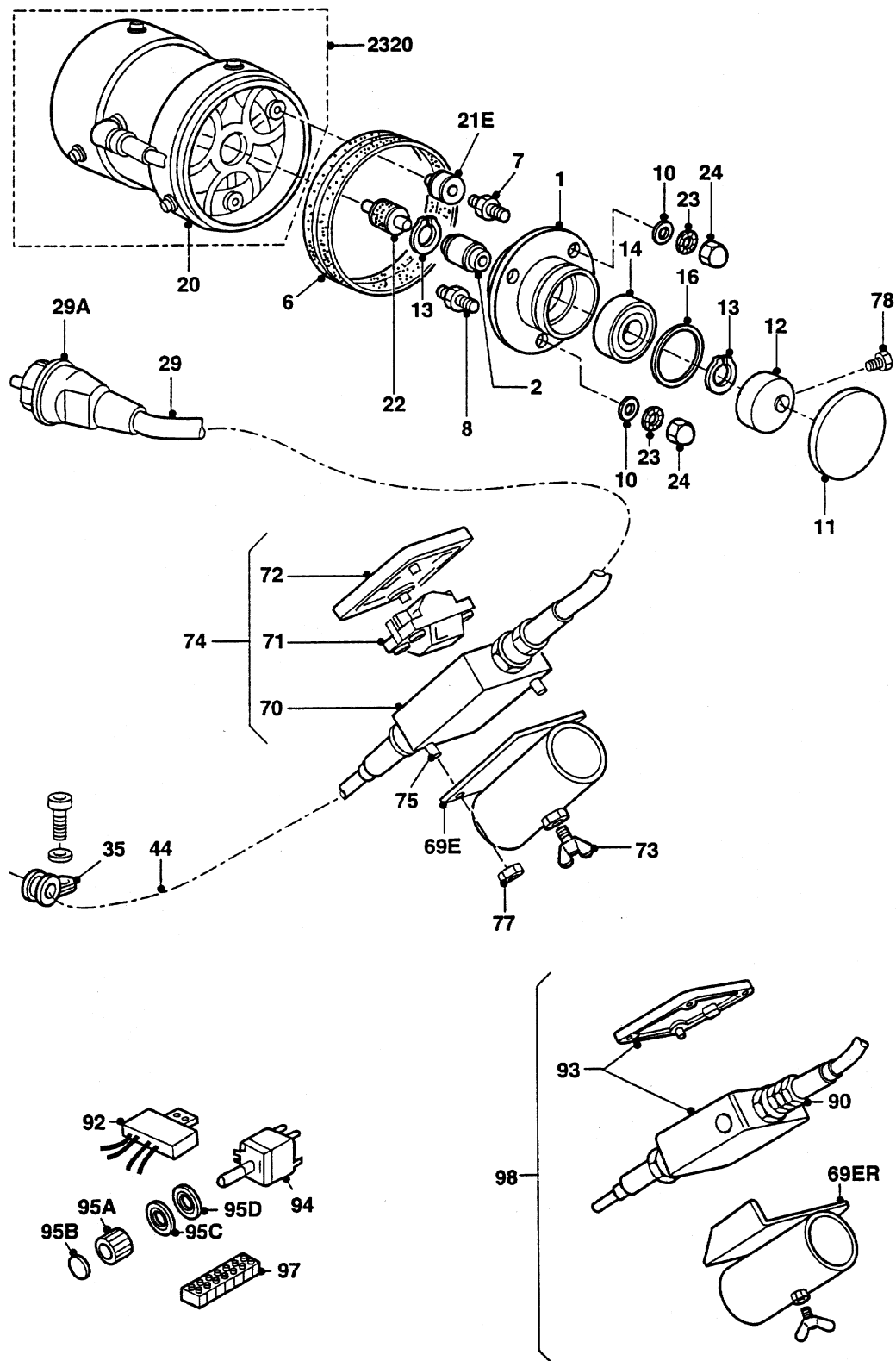
1. Remove the spark plug and pour 3 to 5 cc of new engine oil into the plug-hole.
Pull the recoil starter several times and reinstall the spark plug.
2. Slowly pull the recoil starter until resistance is felt. The piston is in its compression stroke.
3. Clean the engine thoroughly with an oiled cloth.
4. Store the engine in a clean and dry place.



K 200 FRAME

<u>NO</u>	<u>PART NO</u>	<u>PART NAME</u>	<u>QTY.</u>	<u>REMARKS</u>
4	BF0061	RUBBER BUFFER	3	
9	BF0107	NUT M8	8	
10	BF0155	WASHER M8	11	
15	BF2315	MUD-FLAP	1	
23	BF0212	RETAINING RING M8	8	
25	BF0255	COUNTERSUNK (HEXAGON SCREW) M8 X 12	1	
26	BF2326	ASSEMBLY STRIP MUD-FLAP	1	
27	BF0128	BOLT M8 X 30	3	
30	BF0124	BOLT M8 X 10	2	
31	BF0126	BOLT M8 X 20	2	
32	BF0110	SAFETY SCREW M8 X 40	1	
34	BF0129	BOLT M8 X 40	1	
36	BF2336	ASSEMBLY PLAT EXCENTER	1	
37	BF2337	ASSEMBLY BRACKET	1	
38	BF2338	SHAFT	1	
39	BF2339	LOCK (OPERATING HANDLE)	1	
48	BF2348	OPERATING HANDLE 150 CM	1	
49	BF2349	ENDCAP	1	
50	BF23501B/E	ALUM. PROFILE 150 CM	1	
51	BF2351	PLASTIC ENDCAP	2	
52	BF0230	SELF TAPPING SCREW	2	
53	BF0132	SELF TAPPING SCREW	2	
68	BF23068	DIP IN OPERATING HANDLE	1	
77	BF0101	SELF LOCKING NUT M8	4	
80	BF2380	QUICK COUPLER, MUD-FLAP	1	
81	BF0162	WASHER (LARGE)	1	

K200 — ELECTRIC DRIVE-UNIT AND SWITCH

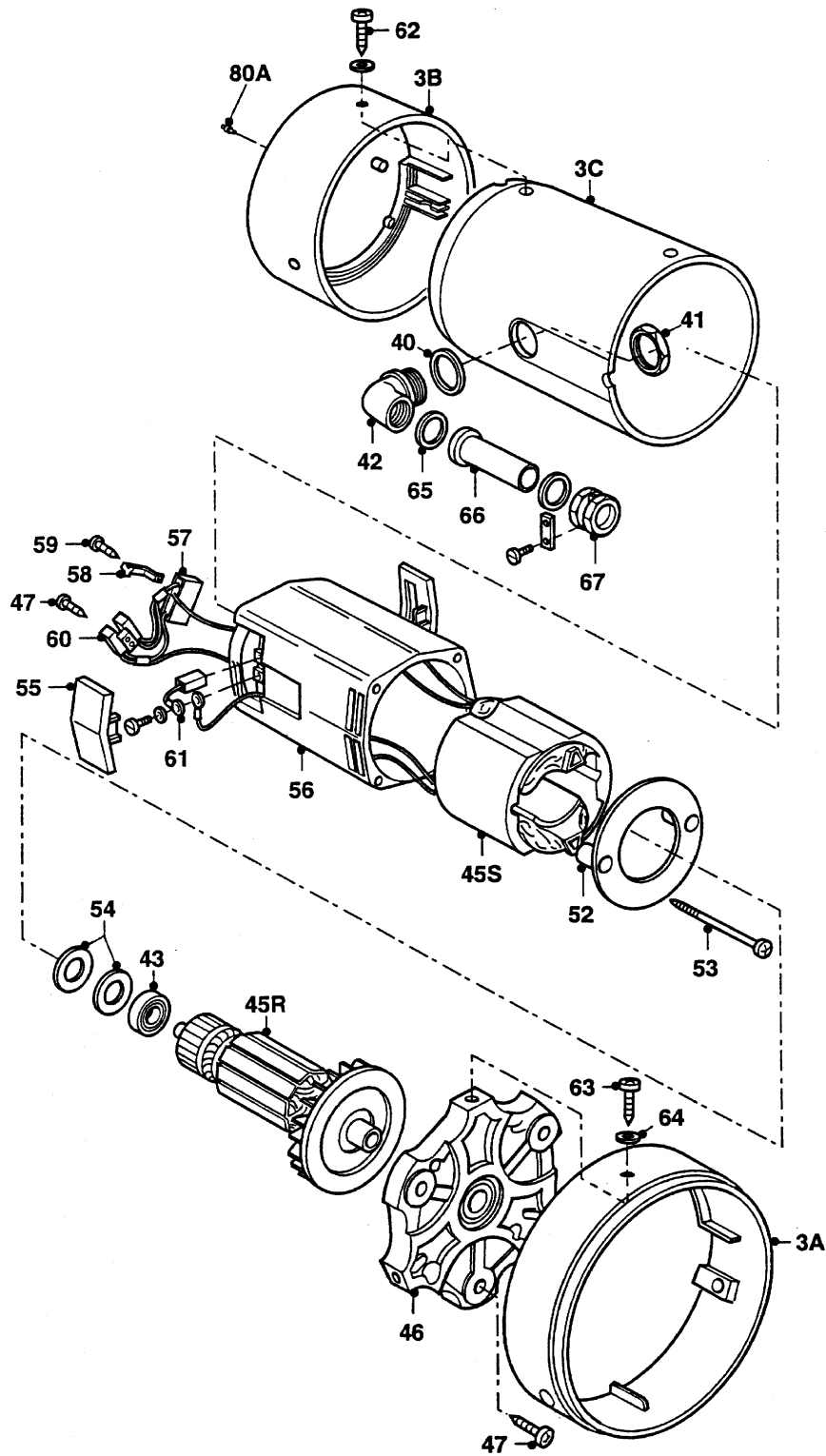


K200 — ELECTRIC DRIVE-UNIT AND SWITCH

K 200 ELECTRIC UNIT AND SWITCH

<u>NO</u>	<u>PART NO</u>	<u>PART NAME</u>	<u>QTY.</u>	<u>REMARKS</u>
1	BF2301	EXCENTER-HOUSING	1	
2	BF2302	EXCENTER-SHAFT	1	
6	BF2306	RUBBER SEAL	1	
7	BF2307	ADAPTOR-BOLT (SHORT)	2	
8	BF2308	ADAPTOR-BOLT (LARGE)	1	
10	BF0155	WASHER	3	
11	BF2311	COVER (EXCENTER HS.)	1	
12	BF2312	EXCENTER	1	
13	BF0201	LOCKING	2	
14	BF2314	EXCENTER-BEARING	1	
16	bf0204	LOCKRING	1	
20	bf2320	drive-unit (complete)	1	
21E	BF0051	RUBBER BUFFER	3	
22	BF0052	COUPLING-RUBBER	1	
23	BF0212	RETAINING RING M8	3	
24	BF0088	CAPNUT	3	
29	BF0004	CABLE 2 X 2.5 MM 2	15	
29A	BF0030	PLUG 220 V.	1	
35	BF2335	CABLE-CLAMP	1	
44	BF0004	CABLE (P/M)	2	
69E	BF2369E	SWITCH ASSEMBLY BRACKET (E)	1	
69ER	BF2369ER	SWITCH ASSEMBLY BRACKET (ER)	1	
70	BF23070	SWITCH HOUSING	1	
71	BF23071	ROCKER-SWITCH (ONLY)	1	
72	BF23072	SWITCH-COVER	1	
73	BF0325	WING-SCREW	1	
74	BF23074	SWITCH COMPLETE	1	
75	BF0261	SCREW	2	
77	BF0099	SELF-LOCKING NUT	2	
78	BF0122	SCREW	1	
90	BF0420	PACKING BOX	2	
91	BF0421	NUT	2	
92	BF2392	SPEED-REGULATOR (ONLY)	1	
93	BF2393	SWITCH-BOX (SPEED-REGULATOR)	1	
94	BF2394	POTENTIOMETER & SWITCH	1	
95A	BF2395A	KNOB (POTENTIOMETER)	1	
95B	BF2395B	KNOB-CAP	1	
95C	BF2395C	FIGURE DIAL	1	
95D	BF2395D	STATOR	1	
97	BF2397	TERMINAL-BLOC	1	
98	BF2398	SPEED-REGULATOR COMPL. (INCL. BRACKET)	1	
99	BF2399	SPEED-REGULATOR COMPL. (EXCL. BRACKET)	1	

K200 — ELETRIC DRIVE-UNIT COMPONENTS

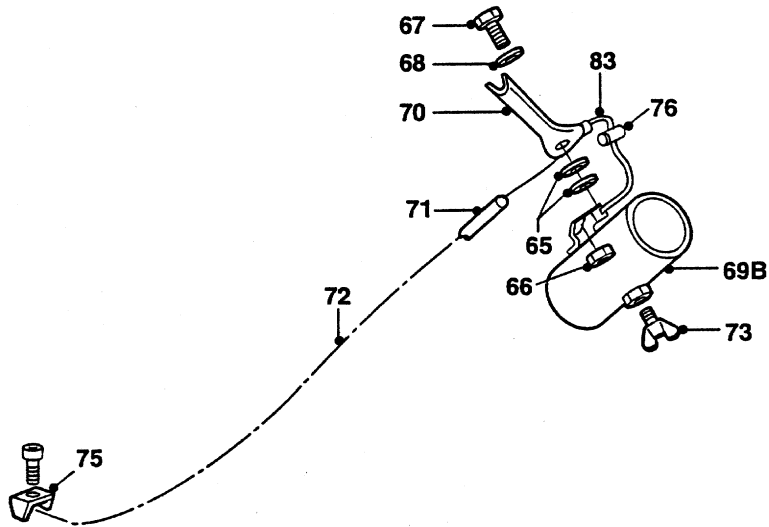
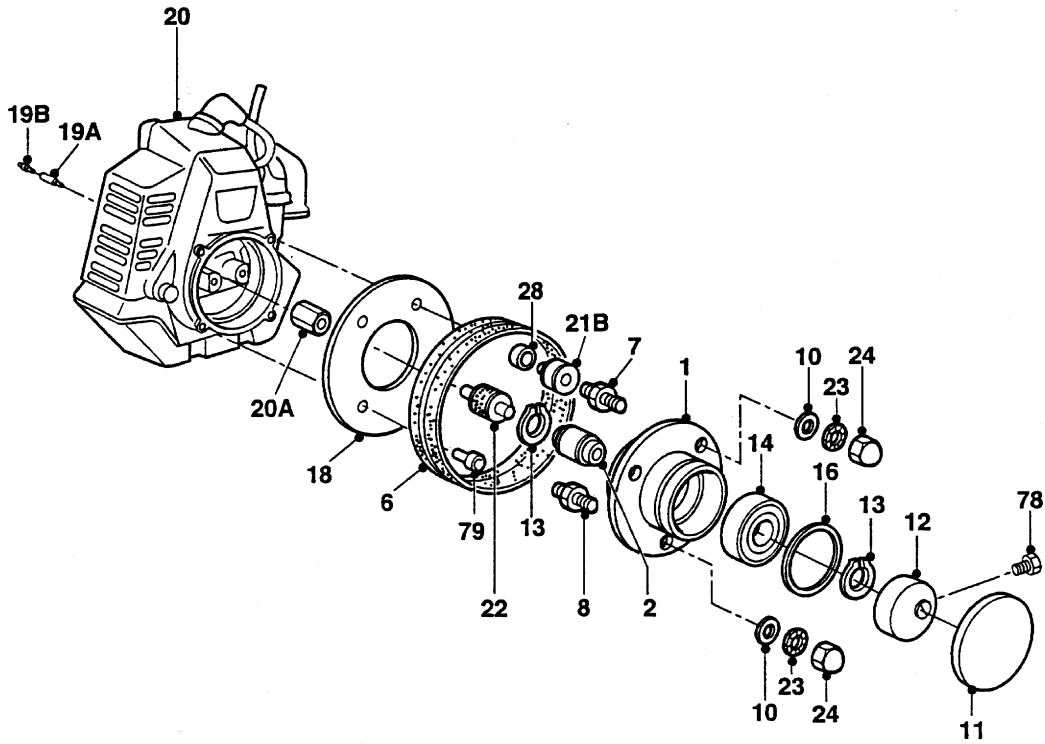


K200 — ELETRIC DRIVE-UNIT COMPONENTS

K 200 ELECTRIC DRIVE-UNIT COMPONENTS

<u>NO</u>	<u>PART NO</u>	<u>PART NAME</u>	<u>QTY.</u>	<u>REMARKS</u>
3A	BF2303A	VENTILATION RING (SMALL)	1	
3B	BF2303B	VENTILATION RING (LARGE)	1	
3C	BF2303C	VENTIATION HOUSING	1	
20	BF2320	DRIVE-UNIT (COMPLETE)	1	
40	BF0428	RUBBER RING	1	
41	BF0421	PLASTIC NUT	1	
42	BF0430	PACKING BOX	1	
43	BF1101220240	REAR-BEARING	1	
45S	BF2345S	STATOR	1	
45R	BF2345R	ROTOR	1	
46	BF2346	FRONTSIELD	1	
47	BF0249	SELF TAPPING SCREW	5	
52	BF1101220170	VENTILATOR-COVER	1	
53	BF1101220200	SCREW	2	
54	BF1101220250	SPRING SOURCER	2	
55	BF1101220220	BRUSH COVER	2	
56	BF1101220180	MOTOR-HOUSING	1	
57	BF2357	CAPACITOR	1	
58	BF2358	CAPACITOR-CLAMP	1	
59	BF0248	SELF TAPPING SCREW	3	
60	BF2360	TERMINAL-BLOC	1	
61	BF1101220230	SET OF BRUSHES	1	
62	BF0230	SELF TAPPING SCREW	3	
63	BF0231	SELF TAPPING SCREW	3	
64	BF0154	WASHER	3	
65	BF0417	PRESSING RING	2	
66	BF0415	CABLE-SLEEVE	1	
67	BF0416	CABLE-PACKING-BOX	1	
80A	BF2380A	PIN (QUICK COUPLER)	1	

K200 — GAS DRIVE-UNIT AND GAS THROTTLE



K200 — GAS DRIVE-UNIT AND GAS THROTTLE

K 200 GAS DRIVE-UNIT AND GAS THROTTLE

<u>NO</u>	<u>PART NO</u>	<u>PART NAME</u>	<u>QTY.</u>	<u>REMARKS</u>
1	BF2301	EXCENTER-HOUSING	1	
2	BF2302	EXCENTER-SHAFT	1	
6	BF2306N	RUBBER SEAL	1	
7	BF2307	ADAPTOR-BOLT (SHORT)	2	
8	BF2308	ADAPTOR-BOLT (LARGE)	1	
10	BF0155	WASHER	3	
11	BF2311	COVER (EXCENTER HS.)	1	
12	BF231213	EXCENTER	1	
13	BF0201	LOCKRING	2	
14	BF2314	EXCENTER-BEARING	1	
16	BF0204	LOCKRING	1	
18	BF2318N	ENGINE BRACKET	1	
19	BF2319	ASSEMBLY PIN MUD-FLAP (COMPLETE)	1	
19A	BF2319A	ALUM. ASSEMBLY PIN	1	
19B	BF2319B	QUICK COUPLER SCREW (MUD-FLAP)	1	
20	BF2302666020	PETROL ENGINE	1	
20A	BF2320A	ENGINE ADAPTOR	1	
21B	BF0055	RUBBER BUFFER	3	
22	BF0052	COUPLING-RUBBER	1	
23	BF0212	RETAINING RING M8	3	
24	BF0088	CAPNUT	2	
28	BF2328	SPACER	3	
65	BF2365	FIBRE RING	2	
66	BF0089	NUT	1	
67	BF0123	BOLT	1	
68	BF0154	WASHER	1	
69B	BF2369B	GAS HANDLE & BRACKET	1	
70	BF2302666700	GAS HANDLE (ONLY)	1	
71	BF2371	THROTTLE-CABLE (OUTER)	1	
72	BF2372	THROTTLE-CABLE (INNER)	1	
73	BF0325	WING-SCREW	1	
75	BF2375	ASSEMBLY-BRACKET	1	
76	BF2376	THROTTLE-CALBE STOPPER	1	
78	BF0122	SCREW	1	
79	BF0123	NUT	4	
83	BF2383	SPRING	1	
84	BF2384	DRIVE-SHAFT ASSY	1	
	BFKAWA 04	FILTER ASSY	1	
	BFKAWA 05	FILTER (ONLY)	1	
	BFKAWA 09	EXHAUST	1	
	BFKAWA 31	CARBURATOR	1	
	BFKAWA 38	FUEL TANK	1	
	BFKAWA 41	FUEL FILTER ASSY	1	
	BFKAWA 50	FUEL CAP	1	
	BFKAWA 51	BREATHER	1	
	BFKAWA 72	SPARK PLUG	1	
	BFKAWA 76	RECOIL STARTER ASSY	1	
	BFKAWA DIV.	GASKET SET (CARBURATOR)	1	
	BF23510	PETROL DRIVE UNIT ASSY (ENGINE & COMPONENTS)	1	

PAYMENT TERMS

Terms of payment for parts are net 10 days.

FREIGHT POLICY

All parts orders will be shipped collect or prepaid with the charges added to the invoice. All shipments are F.O.B. point of origin. Multiquip's responsibility ceases when a signed manifest has been obtained from the carrier, and any claim for shortage or damage must be settled between the consignee and the carrier.

MINIMUM ORDER

The minimum charge for orders from Multiquip is \$15.00 net. Customers will be asked for instructions regarding handling of orders not meeting this requirement.

RETURNED GOODS POLICY

Return shipments will be accepted and credit will be allowed, subject to the following provisions:

1. A Returned Material Authorization must be approved by Multiquip prior to shipment.
2. To obtain a Return Material Authorization, a list must be provided to Multiquip Parts Sales that defines item numbers, quantities, and descriptions of the items to be returned.
 - a. The parts numbers and descriptions must match the current parts price list.
 - b. The list must be typed or computer generated.
 - c. The list must state the reason(s) for the return.
 - d. The list must reference the sales order(s) or invoice(s) under which the items were originally purchased.
 - e. The list must include the name and phone number of the person requesting the RMA.
3. A copy of the Return Material Authorization must accompany the return shipment.

4. Freight is at the sender's expense. All parts must be returned freight prepaid to Multiquip's designated receiving point.
5. Parts must be in new and resalable condition, in the original Multiquip package (if any), and with Multiquip part numbers clearly marked.
6. The following items are not returnable:
 - a. Obsolete parts. (If an item is listed in the parts price book as being replaced by another item, it is obsolete.)
 - b. Any parts with a limited shelf life (such as gaskets, seals, "O" rings, and other rubber parts) that were purchased more than six months prior to the return date.
 - c. Any line item with an extended dealer net price of less than \$5.00.
 - d. Special order items.
 - e. Electrical components.
 - f. Paint, chemicals, and lubricants.
 - g. Decals and paper products.
 - h. Items purchased in kits.
7. The sender will be notified of any material received that is not acceptable.
8. Such material will be held for 5 working days from notification, pending instructions. If a reply is not received within 5 days, the material will be returned to the sender at his expense.
9. Credit on returned parts will be issued at dealer net price at time of the original purchase, less a 15% restocking charge.
10. In cases where an item is accepted for which the original purchase document can not be determined, the price will be based on the list price that was effective twelve months prior to the RMA date.
11. Credit issued will be applied to future purchases only.

PRICING AND REBATES

Prices are subject to change without prior notice. Price changes are effective on a specific date and all orders received on or after that date will be billed at the revised price. Rebates for price declines and added charges for price increases will not be made for stock on hand at the time of any price change.

Multiquip reserves the right to quote and sell direct to Government agencies, and to Original Equipment Manufacturer accounts who use our products as integral parts of their own products.

SPECIAL EXPEDITING SERVICE

A \$20.00 to \$50.00 surcharge will be added to the invoice for special handling including bus shipments, insured parcel post or in cases where Multiquip must personally deliver the parts to the carrier.

LIMITATIONS OF SELLER'S LIABILITY

Multiquip shall not be liable here under for damages in excess of the purchase price of the item with respect to which damages are claimed, and in no event shall Multiquip be liable for loss of profit or good will or for any other special, consequential or incidental damages.

LIMITATION OF WARRANTIES

No warranties, express or implied, are made in connection with the sale of parts or trade accessories nor as to any engine not manufactured by Multiquip. Such warranties made in connection with the sale of new, complete units are made exclusively by a statement of warranty packaged with such units, and Multiquip neither assumes nor authorizes any person to assume for it any other obligation or liability whatever in connection with the sale of its products. A part from such written statement of warranty, there are no warranties, express, implied or statutory, which extend beyond the description of the products on the face hereof.

PARTS AND OPERATION MANUAL

HERE'S HOW TO GET HELP

*PLEASE HAVE THE MODEL AND SERIAL NUMBER
ON-HAND WHEN CALLING*

PARTS DEPARTMENT

800-427-1244 or 310-537-3700

FAX: 800-672-7877 or 310-637-3284

SERVICE DEPARTMENT/TECHNICAL ASSISTANCE

800-478-1244 or 310-537-3700

FAX: 310- 537-4259

WARRANTY DEPARTMENT

888-661-4279, or 310-661-4279

FAX: 310- 537-1173

MAIN

800-421-1244 or 310-537-3700

FAX: 310-537-3927



MULTIQUIP INC.

POST OFFICE BOX 6254

CARSON, CA 90749

310-537-3700 • 800-421-1244

FAX: 310-537-3927

E-MAIL: mq@multiquip.com

WWW: multiquip.com

Atlanta • Boise • Dallas • Houston • Newark
Quebec, Canada • Manchester, UK • Rio De Janeiro, BR • Guadalajara, MX