

PARTS MANUAL



JRT RIDE-ON POWER TROWEL

MODEL # _____

SERIAL # _____

Revision #1 (11/04/02)

© COPYRIGHT 2002, MULTQUIP INC.



MULTQUIP INC.

18910 WILMINGTON AVE.
CARSON, CALIFORNIA 90746
310-537-3700
800-421-1244
FAX: 310-537-3927

E-mail: mq@multiquip.com • **www:** www.multiquip.com

Atlanta • Boise • Dallas • Houston • Newark
Montreal, Canada • Manchester, UK
Rio De Janeiro, Brazil • Guadalajara, Mexico

PARTS DEPARTMENT:

800-427-1244
FAX: 800-672-7877

SERVICE DEPARTMENT/TECHNICAL ASSISTANCE:

800-478-1244
FAX: 310-631-5032

PN 10766



WARNING



CALIFORNIA — Proposition 65 Warning

Engine exhaust and some of its constituents, and some dust created by power sanding, sawing, grinding, drilling and other construction activities contains chemicals known to the State of California to cause cancer, birth defects and other reproductive harm. Some examples of these chemicals are:

- Lead from lead-based paints.
- Crystalline silica from bricks.
- Cement and other masonry products.
- Arsenic and chromium from chemically treated lumber.

Your risk from these exposures varies, depending on how often you do this type of work. To reduce your exposure to these chemicals: **ALWAYS** work in a well ventilated area, and work with approved safety equipment, such as dust masks that are specially designed to filter out microscopic particles.

HERE'S HOW TO GET HELP

*PLEASE HAVE THE MODEL AND SERIAL NUMBER
ON-HAND WHEN CALLING*

PARTS DEPARTMENT

800-427-1244 or 310-537-3700

FAX: 800-672-7877 or 310-637-3284

SERVICE DEPARTMENT/TECHNICAL ASSISTANCE

800-478-1244 or 310-537-3700

FAX: 310- 537-4259

WARRANTY DEPARTMENT

888-661-4279, or 310-661-4279

FAX: 310- 537-1173

MAIN

800-421-1244 or 310-537-3700

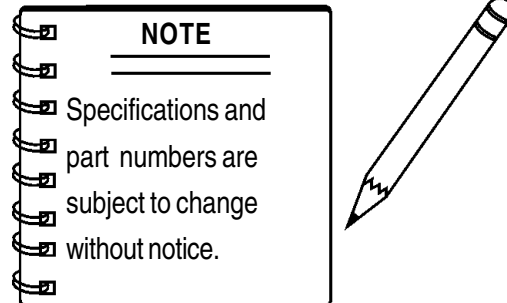
FAX: 310-537-3927

JRT RIDE-ON POWER TROWEL—TABLE OF CONTENTS

Here's How To Get Help	3
Table Of Contents	4
Parts Ordering Procedures	5

MQ WHITEMAN JRT RIDE-ON POWER TROWEL

Explanation of Code In Remarks Column	6
Suggested Spare Parts	7
Engine & Clutch Assembly	8-11
Drive Assembly	12-13
Steering Assembly	14-15
Gearbox Adapter Plates Assembly	16-17
Gearbox Assembly	18-21
Spider & Blades Assembly	22-23
Twin Pitch Control Assembly	24-27
Electric Pitch Control Assembly	28-31
Single Pitch Control Assembly	32-33
Frame Assembly	34-37
Lights & Retardant Spray Options Assembly	38-39
E-Z Mover & Lift Handle Assembly	40-41
Wiring Diagram Assembly	42-45
Terms and Conditions of Sale	46



JRT RIDE-ON POWER TROWEL— PARTS ORDERING PROCEDURES

- Dealer account number
- Dealer name and address
- Shipping address (if different than billing address)
- Return fax number
- Applicable model number
- Quantity, part number and description of each part
- Specify preferred method of shipment:
 - UPS Ground
 - UPS Second Day or Third Day*
 - UPS Next Day*
 - Federal Express Priority One (please provide us with your Federal Express account number)*
 - Airborne Express*
 - Truck or parcel post

**Normally shipped the same day the order is received, if prior to 2PM west coast time.*

Earn Extra Discounts when you order by FAX!

All parts orders which include complete part numbers and are received by fax qualify for the following extra discounts:

<u>Number of line items ordered</u>	<u>Additional Discount</u>
1-9 items	3%
10+ items**	5%

Get special freight allowances when you order 10 or more line items via FAX!**

- UPS Ground Service at no charge for freight
- UPS Third Day Service at one-half of actual freight cost

No other allowances on freight shipped by any other carrier.

**Common nuts, bolts and washers (all items under \$1.00 list price) do not count towards the 10+ line items.

DISCOUNTS ARE SUBJECT TO CHANGE

Fax order discount and UPS special programs revised June 1, 1995

**Extra Fax Discount
for Domestic USA
Dealers Only**

**Up to 5%
extra savings!**

**UPS
Special**
For faxed orders only

**Now! Direct TOLL-FREE access
to our Parts Department!**

Toll-free nationwide:

800-421-1244

Toll-free FAX:

800/6-PARTS-7 • 800-672-7877

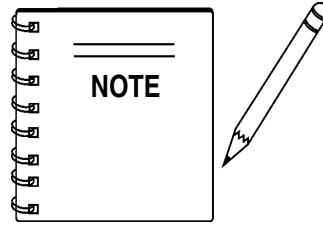
EXPLANATION OF CODE IN REMARKS COLUMN

How to read the marks and remarks used in this parts book.

Items Found In the “Remarks” Column

Serial Numbers-Where indicated, this indicates a serial number range (inclusive) where a particular part is used.

Model Number-Where indicated, this shows that the corresponding part is utilized only with this specific model number or model number variant.

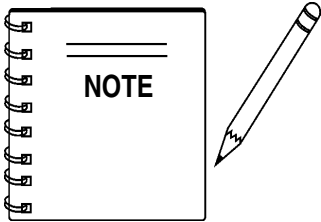


The contents of this parts catalog are subject to change without notice.

Items Found In the “Items Number” Column

All parts with same symbol in the number column, *, #, +, %, or ■, belong to the same assembly or kit.

Note: If more than one of the same reference number is listed, the last one listed indicates newest (or latest) part available.



If more than one of the same reference number is listed, the last one listed indicates newest (or latest) part available.

JRT RIDE-ON POWER TROWEL — SUGGESTED SPARE PARTS

JRT RIDE-ON POWER TROWEL (VANGUARD)

1 to 3 Units

Qty.	P/N	Description
1	XXXXXXXX	XXXXXXXXXXXX

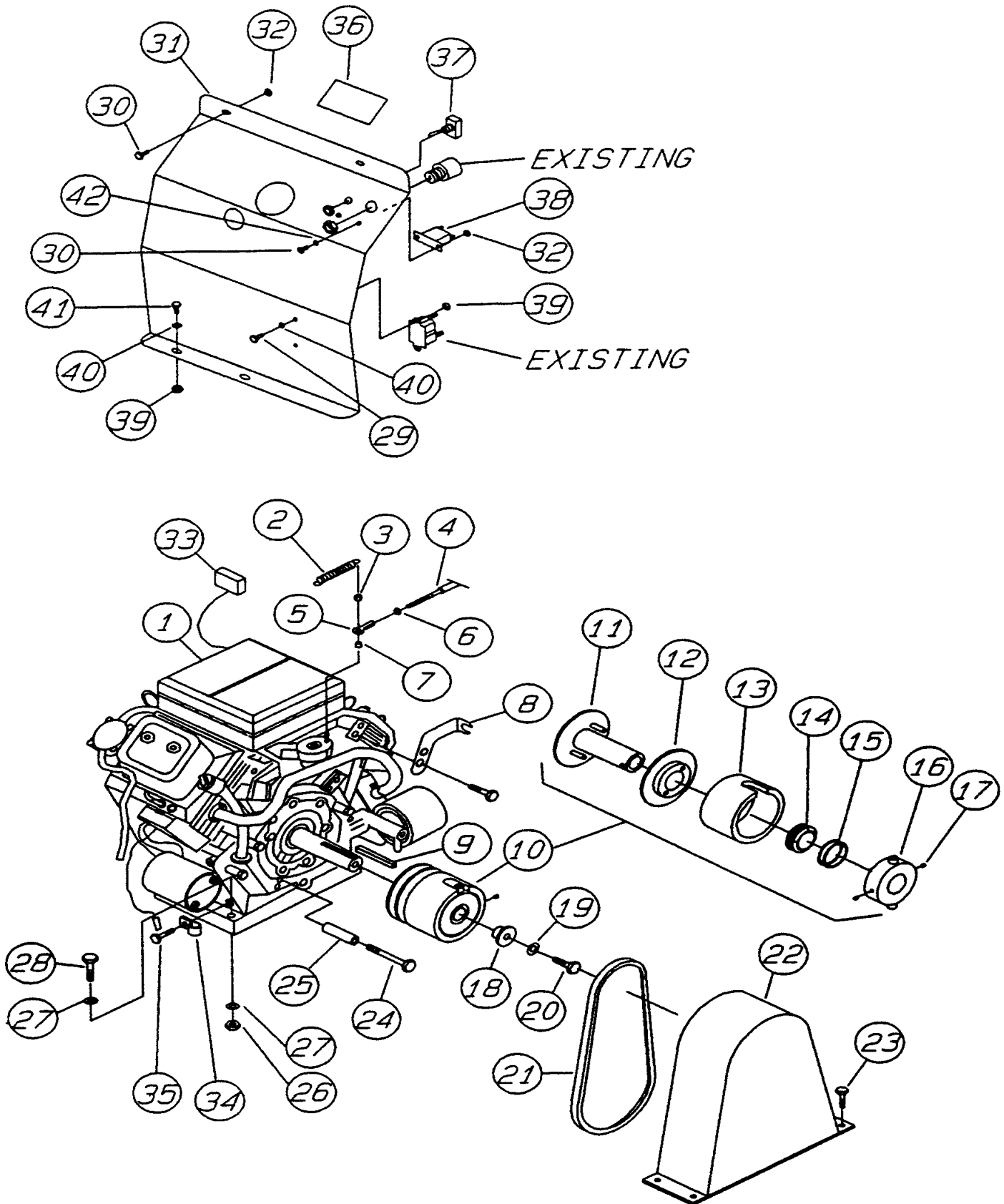
JRT RIDE-ON POWER TROWEL (HONDA)

1 to 3 Units

Qty.	P/N	Description
1	XXXXXXXX	XXXXXXXXXXXX

JRT RIDE-ON POWER TROWEL — ENGINE & CLUTCH ASSY.

ENGINE & CLUTCH ASSY.



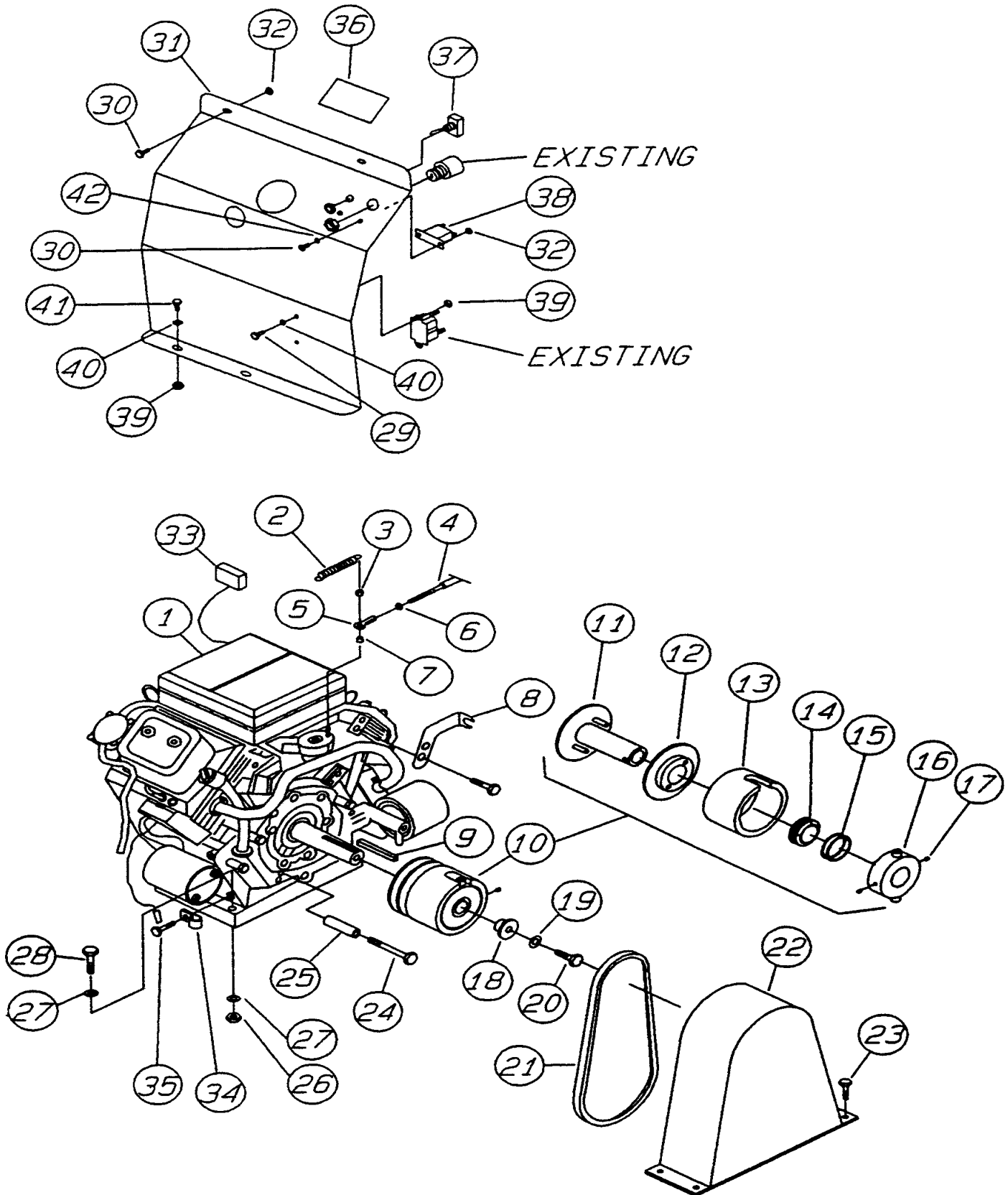
JRT RIDE-ON POWER TROWEL — ENGINE & CLUTCH ASSY.

ENGINE & CLUTCH ASSY.

<u>NO.</u>	<u>PART NO.</u>	<u>PART NAME</u>	<u>QTY.</u>	<u>REMARKS</u>
1		BRIGGS /STRATTON VANGUARD 16 HP. ENGINE	1	
2	2192	THROTTLE SPRING	1	
3	2194	THROTTLE NUT	1	
4	2124	THROTTLE CABLE	1	
5	2153	SPHERICAL BEARING	1	
6	0937	HEX NUT 10- 32	1	
7	2190	SPACER	1	
8	2162	THROTTLE CABLE MOUNTING BRACKET	1	
9	0310	CLUTCH KEY	1	
10	1880	4" CLUTCH ASSEMBLY (1" BORE)	1	FROM SF16747 TO RJ23742
10	2516	4" CLUTCH ASSEMBLY (1" BORE)	1	FROM RJ23746
11	1882	CLUTCH SPINDLE	1	
12	1886	CLUTCH PULLEY ASSEMBLY	1	
13	1889	CLUTCH BOWL ASSEMBLY	1	FROM SF16747 TO RJ23742
13	2504	CLUTCH BOWL ASSEMBLY	1	FROM RJ23746
14	1890	CLUTCH WEIGHT SET	1	FROM SF16747 TO RI23564
14	2451	CLUTCH WEIGHT SET	1	FROM RI23565
15	0855	WEIGHT SPRING	2	FROM SF16747 TO RI23564
15	2450	WEIGHT SPRING	2	FROM RI23565
16	1888	CLUTCH PLATE	1	FROM SF16747 TO RJ23742
16	2506	CLUTCH PLATE (WITH ROLLERS)	1	FROM RJ23746
17	1893	SET SCREW	2	
18	9123	CLUTCH RETAINER	1	
19	0166A	3/8" LOCK WASHER	1	
20	0478	HHCS 3/8- 24X 2.1/4"	1	
21	2155	DRIVE BELT A- 37	2	
22	2134	BELT GUARD	1	
23	1273	HHSTS 8- 32X3/8"	4	
24	0169	HHCS 3/8- 16X3"	1	
25	2257	BELT GUIDE	1	

JRT RIDE-ON POWER TROWEL — ENGINE & CLUTCH ASSY.

ENGINE & CLUTCH ASSY.



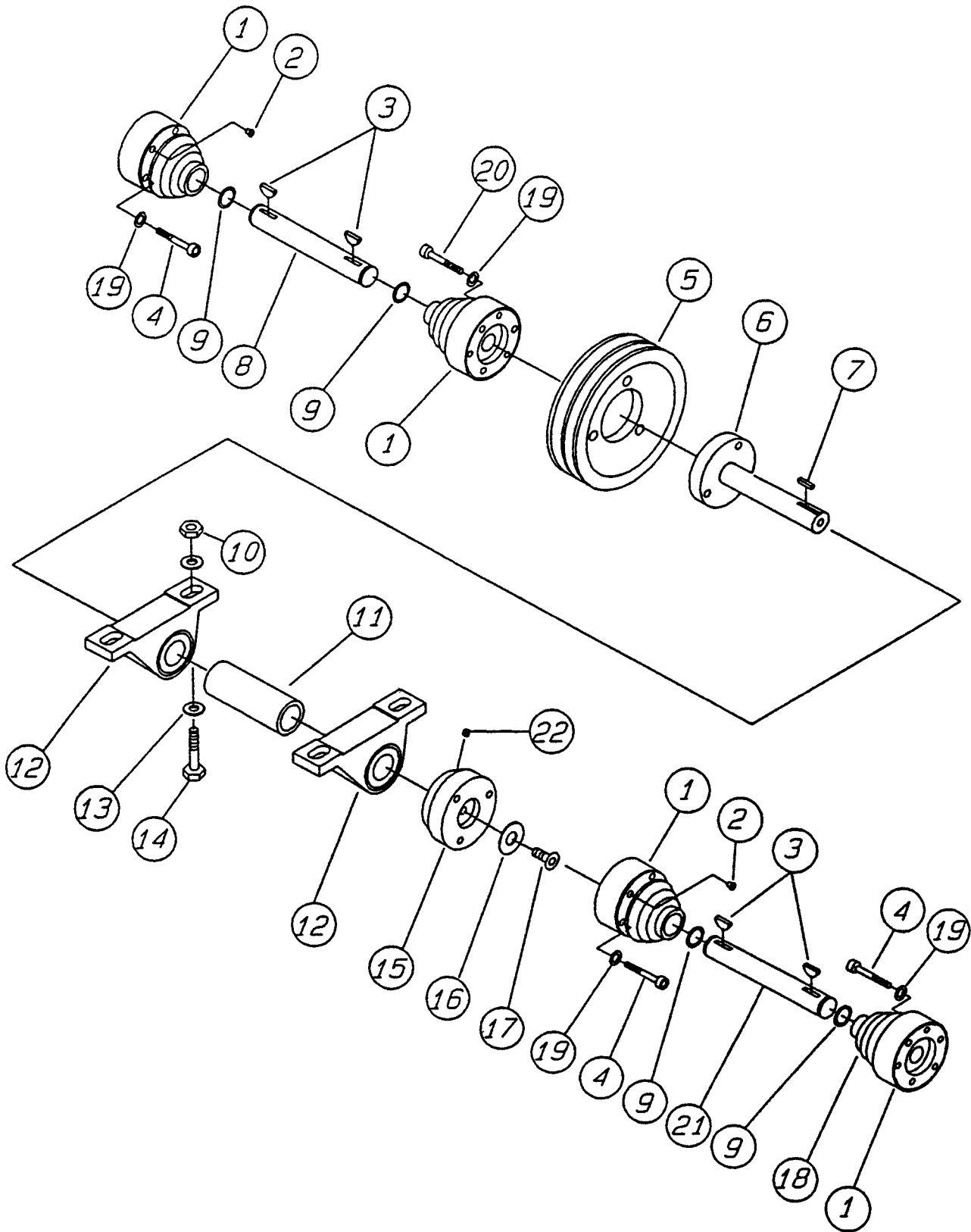
JRT RIDE-ON POWER TROWEL — ENGINE & CLUTCH ASSY.

ENGINE & CLUTCH ASSY.

<u>NO.</u>	<u>PART NO.</u>	<u>PART NAME</u>	<u>QTY.</u>	<u>REMARKS</u>
26	5283	NUT FLEXLOC 5/16- 18	4	
27	0300B	FLAT WASHER 5/16"	9	
28	1207	HHCS 5/16- 18X1.3/4"	4	
29	2198	SHCS 6MM X 1.0 X 10MM	1	
30	5065B	RHMS 10- 32 X 1/2"	4	
31	2089	FRONT HEAT SHIELD	1	TO PA27079
31	2590	CONTROL PANEL, MODEL JRT92	1	FROM PA27079
32	10019	FLEXLOC NUT 10- 32	4	
33	2655	HOUR METER	1	FROM QH26222
34	8126	HOSE CLAMP	1	
35	2299	HHCS 8MM X 1.5 X 15MM, MODEL JRT92	1	FROM PA27079
36	2697	DECAL CONTROL PANEL, MODEL JRT92	1	FROM PA27079
37	4682	LIGHT SWITCH (OPTIONAL),MODEL JRT92	1	FROM PA27079
38	2673	CIRCUIT BREAKER, MODEL JRT92	1	FROM PA27079
39	10024	FLEXLOC NUT 1/4- 20, MODEL JRT92	4	FROM PA27079
40	0948	FLAT WASHER 1/4"	4	
41	4514	HHCS 1/4- 20 X 5/8", MODEL JRT92	2	FROM PA27079
42	2203	FLAT WASHER #10, MODEL JRT92	2	FROM PA27079

JRT RIDE-ON POWER TROWEL — DRIVE ASSY.

DRIVE ASSY.



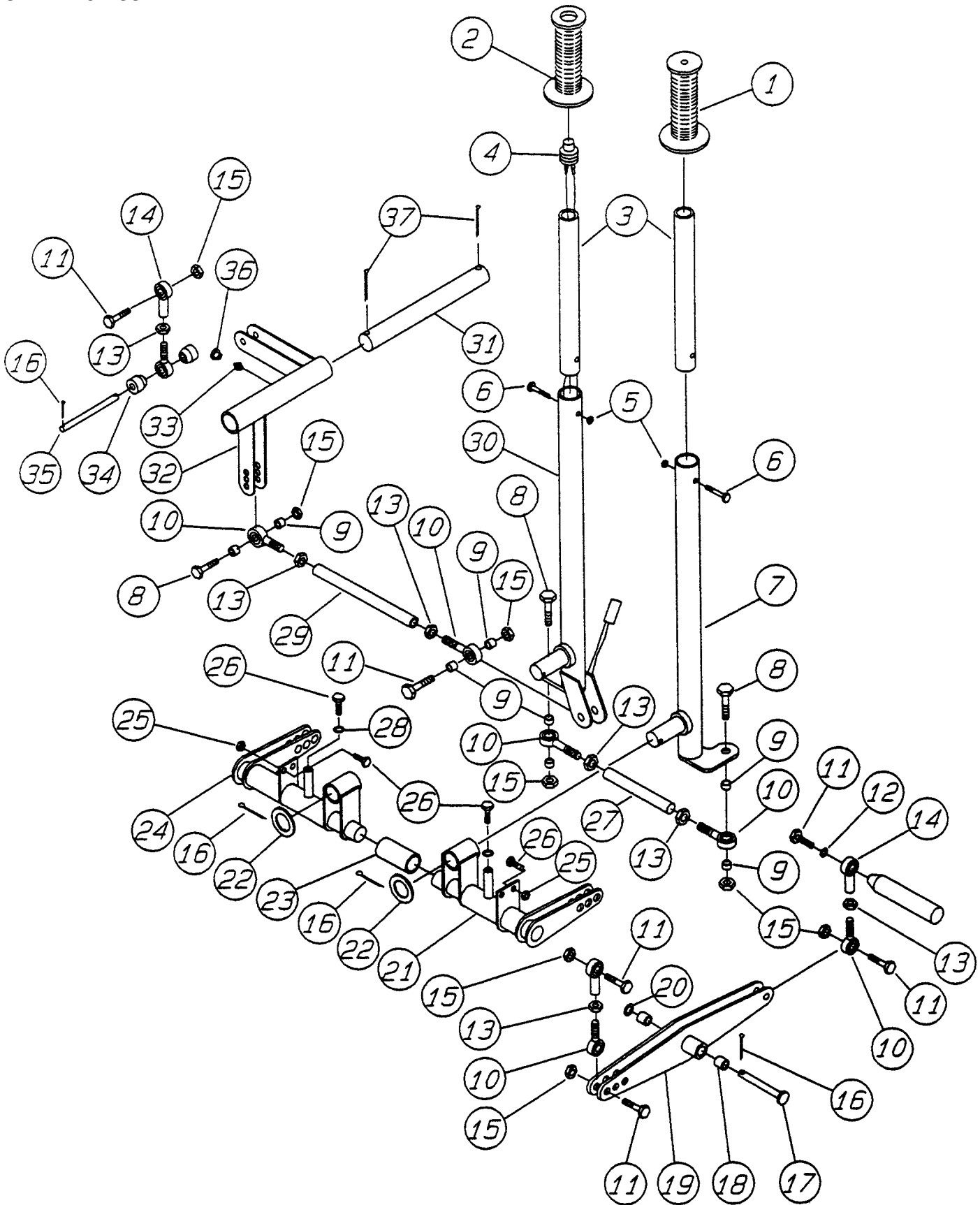
JRT RIDE-ON POWER TROWEL — DRIVE ASSY.

DRIVE ASSY.

<u>NO.</u>	<u>PART NO.</u>	<u>PART NAME</u>	<u>QTY.</u>	<u>REMARKS</u>
1	2052	C. V. JOINT	4	
2	2218	PLUG	12	
3	0126	WOODRUFF KEY	4	
4	2186	SHCS 5/16-18X2.1/4"	9	
5	2019	PULLEY	1	
6	2034	BEARING SHAFT	1	
7	2126	KEY	1	
8	2071	LEFT SIDE DRIVE SHAFT	1	
9	2090	SNAP RING	4	
10	10133	FLEXLOC NUT 3/8"	4	
11	2142	SPACER	1	
12	4182	PILLOW BLOCK BEARING	2	
13	10136	FLAT WASHER 3/8"	8	
14	1284	HHCS 3/8-16X1.1/2"	4	
15	2029	COUPLER 1" ID.	1	
16	2037	RETAINING WASHER	1	
17	1146	FHSCS 5/16- 18X1"	3	
18	2259	C.V. JOINT BOOT (REPLACEMENT ONLY)		
19	0161C	FLAT WASHER 5/16"	12	
20	2187	SHCS 5/16- 18X2.1/2"	3	
21	2074	RIGHT SIDE DRIVE SHAFT	1	
22	10138	SHSS 1/4- 20 X 1/2"	1	

JRT RIDE-ON POWER TROWEL — STEERING ASSY.

STEERING ASSY.



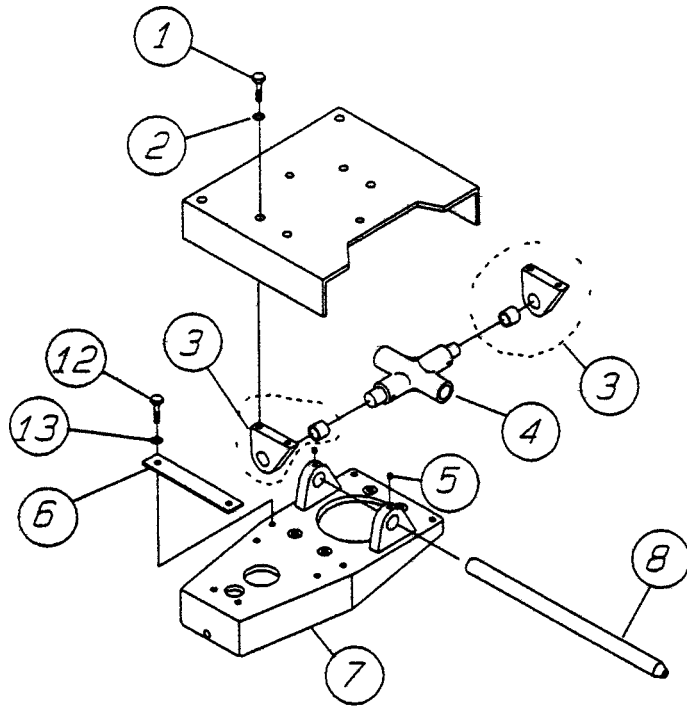
JRT RIDE-ON POWER TROWEL — STEERING ASSY.

STEERING ASSY.

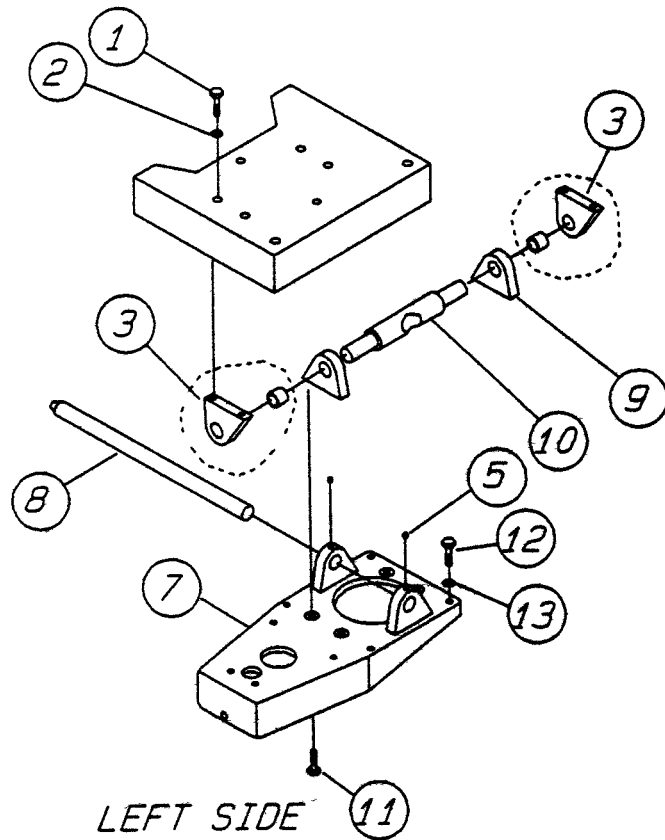
<u>NO.</u>	<u>PART NO.</u>	<u>PART NAME</u>	<u>QTY.</u>	<u>REMARKS</u>
1	0189	LEFT SIDE HAND GRIP (NO OPTIONS)	1	
1	2267	LEFT SIDE HAND GRIP (RETARDANT SPRAY)	1	
2	267	RIGHT SIDE HAND GRIP	1	
3	2224	HANDLE EXTENSIONS	2	
4	2766	KILL BUTTON ASSEMBLY	1	
5	2197	ACORN NUT 1/4- 20	2	
6	424	HHCS 1/4- 20 X 1.1/4"	2	
7	2055	LEFT HANDLE	1	FROM SF16747 TO RD21688
7	2355	LEFT HANDLE	1	FROM RD21713
8	9154	HHCS 3/8- 16 X 1.3/4"	2	FROM RD21713
9	2196	SPACER	8	
10	2063	RIGHT HAND MALE SPHERICAL BEARING	7	FROM SF16747 TO RD21688
11	1023	HHCS 3/8- 16 X 1.1/4"	9	FROM RD21713
12	166A	LOCK WASHER 3/8"	2	
13	2199	JAM NUT 3/8- 24	9	
14	2064	RIGHT HAND FEMALE SPHERICAL BEARING	5	
15	10133	FLEXLOC NUT 3/8- 16	11	
16	183	COTTER PIN	5	
17	2097	CLEVIS PIN	2	
18	1484	BUSHING	4	
19	2038	STEERING CONTROL LEVER	2	
20	10136	FLAT WASHER 3/8"	2	
21	2356	LEFT SIDE STEERING ASSEMBLY	1	
22	8151	FLAT WASHER 3/4"	2	
23	2123	CENTER SPACER	1	
24	2225	RIGHT SIDE STEERING ASSEMBLY	1	
25	5283	FLEXLOC NUT 5/16- 18	4	
26	655	HHCS 5/16- 18 X 3/4"	6	
27	2352	CONNECTOR ROD	1	FROM RD21713
28	161C	LOCK WASHER 5/16"	2	
29	2004	LINKAGE ROD	1	
30	2354	RIGHT SIDE STEERING ASSEMBLY	1	
31	2080	RIGHT /LEFT MOTION SHAFT	1	
32	2036	RIGHT /LEFT MOTION ARM	1	
33	5228	GREASE FITTING	3	
34	2188	SPACER	2	
35	2193	ADAPTER PLATE PIN	1	
36	1162A	LUBRA- CAP	3	
37	2219	COTTER PIN	2	

JRT RIDE-ON POWER TROWEL — GEARBOX ADAPTER PLATES ASSY.

GEARBOX ADAPTER PLATES ASSY.



RIGHT SIDE



LEFT SIDE

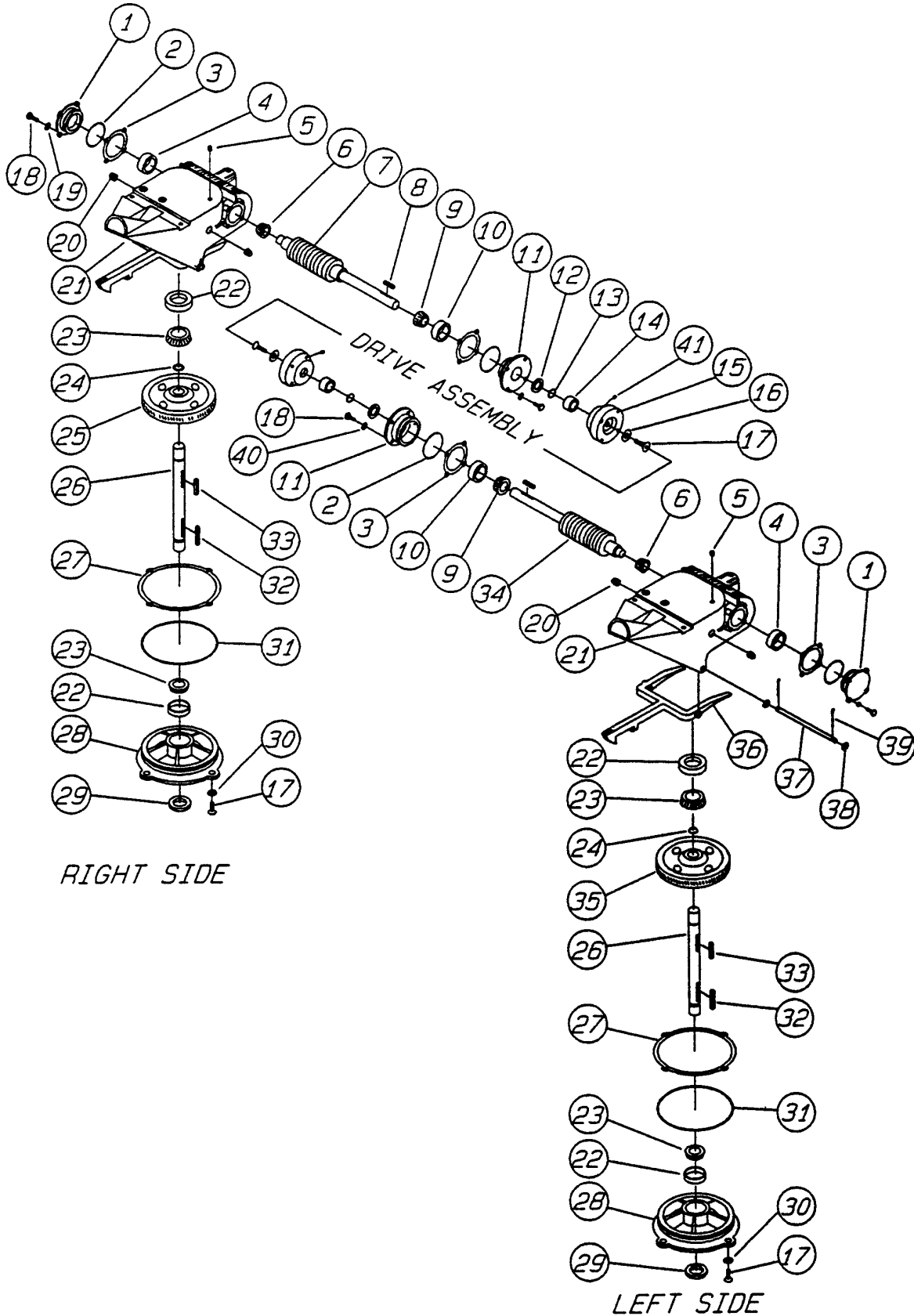
JRT RIDE-ON POWER TROWEL — GEARBOX ADAPTER PLATES ASSY.

GEARBOX ADAPTER PLATES ASSY.

<u>NO.</u>	<u>PART NO.</u>	<u>PART NAME</u>	<u>QTY.</u>	<u>REMARKS</u>
1	1023	HHCS 3/8- 16 X 1.1/4"	8	
2	166A	LOCK WASHER 3/8"	8	
3	2079	ROCKER BLOCK	4	
4	2044	PIVOT ARM ASSEMBLY	1	
5	10138	SHSS 1/4- 20 X 1/2"	4	
6	1816	PLATE	1	
7	2132	ADAPTER PLATE	2	
8	2107	CONTROL PIVOT ROD	2	
9	2078	ROCKER BLOCK	2	
10	2076	PIVOT SHAFT	1	
11	1394	FHCS 3/8- 16 X 1"	4	
12	1284	HHCS 3/8- 16 X 1.1/2"	8	
13	166A	LOCK WASHER 3/8"	8	

JRT RIDE-ON POWER TROWEL — GEARBOX ASSY.

GEARBOX ASSY.



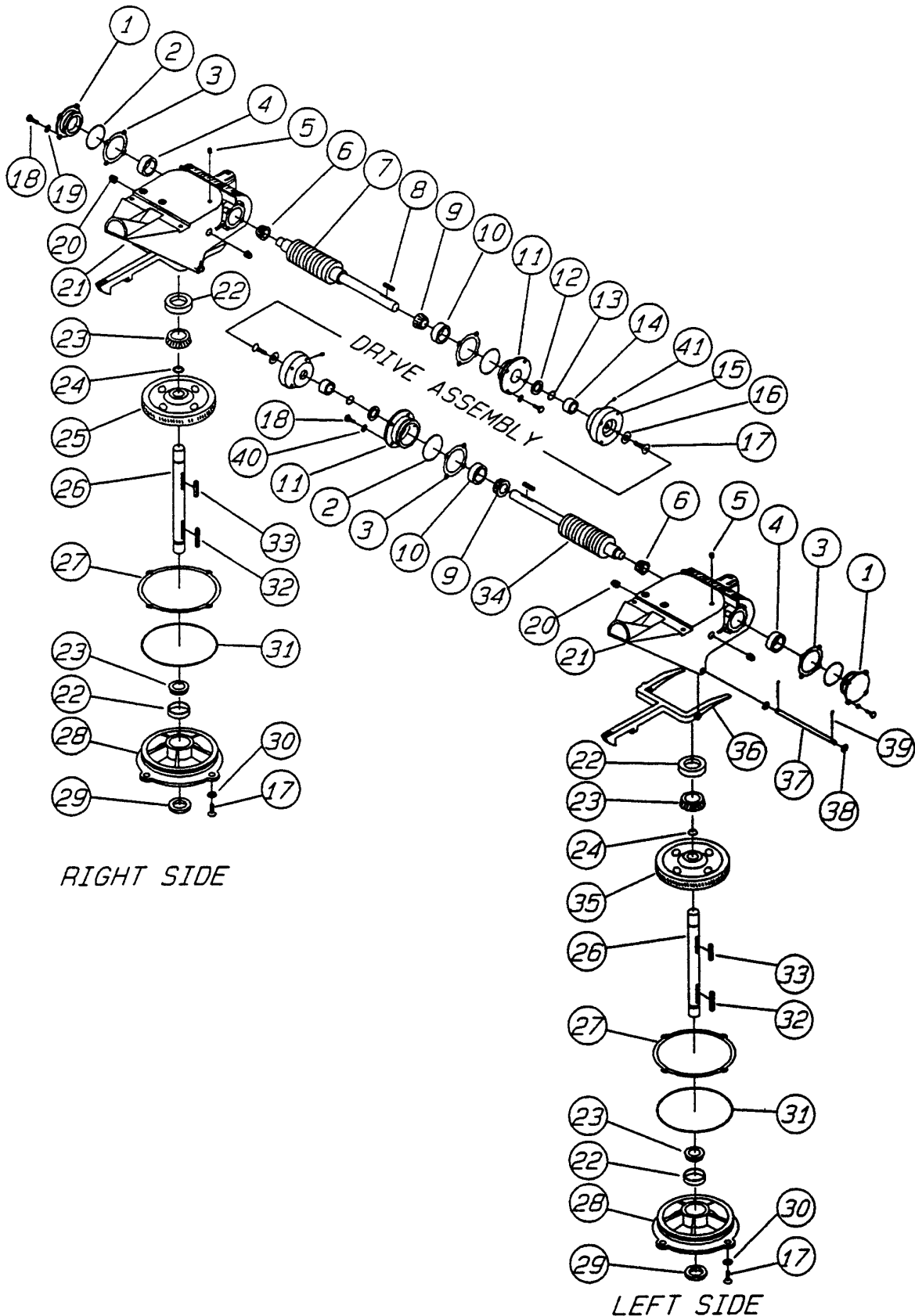
JRT RIDE-ON POWER TROWEL — GEARBOX ASSY.

GEARBOX ASSY.

<u>NO.</u>	<u>PART NO.</u>	<u>PART NAME</u>	<u>QTY.</u>	<u>REMARKS</u>
1	1136	END CAP	2	
2	2308	O- RING	4	
3	1134	GASKET	4	
4	735A	BEARING CUP	2	
5	1132	AIR VENT	2	
6	0735	BEARING CONE	2	
7	2031	RIGHT HAND WORM	1	
8	2126	KEY	2	
9	735	BEARING CONE	2	FROM SF16747 TO RD21397
9	2392	BEARING CONE	2	FROM RD21713
10	2391	BEARING CUP	2	FROM SF16747 TO RD21397
10	2391	BEARING CUP	2	FROM RD21713
11	2390	FLANGE	2	FROM SF16747 TO RD21397
11	2390	FLANGE	2	FROM RD21713
12	2117	OIL SEAL	2	
13	2115	O- RING	2	
14	2118	SPACER	2	
15	2030	COUPLER	2	
16	2037	RETAINING WASHER	2	
17	1146	FHSCS 5/16- 18 X 1"	10	
18	2295	HHCS 1/4- 20 X 7/8"	16	
19	181B	LOCK WASHER 1/4"	8	
20	121A	PLUG	4	
21	2112	GEARBOX	2	
22	232A	BEARING CUP	4	
23	2032	BEARING CONE	4	
24	1138	RETAINING RING	2	
25	2249	RIGHT HAND WORM GEAR	1	
26	2231	MAIN SHAFT	2	
27	1144	GASKET	2	
28	1145	COVER PLATE	2	
29	0254	SEAL	2	

JRT RIDE-ON POWER TROWEL — GEARBOX ASSY.

GEARBOX ASSY.



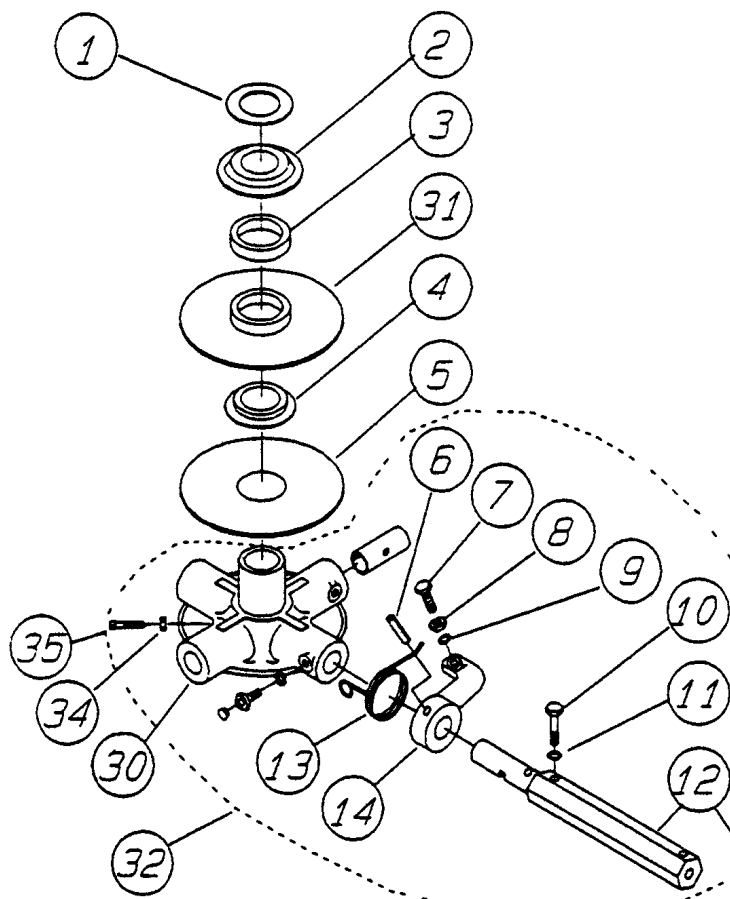
JRT RIDE-ON POWER TROWEL — GEARBOX ASSY.

GEARBOX ASSY.

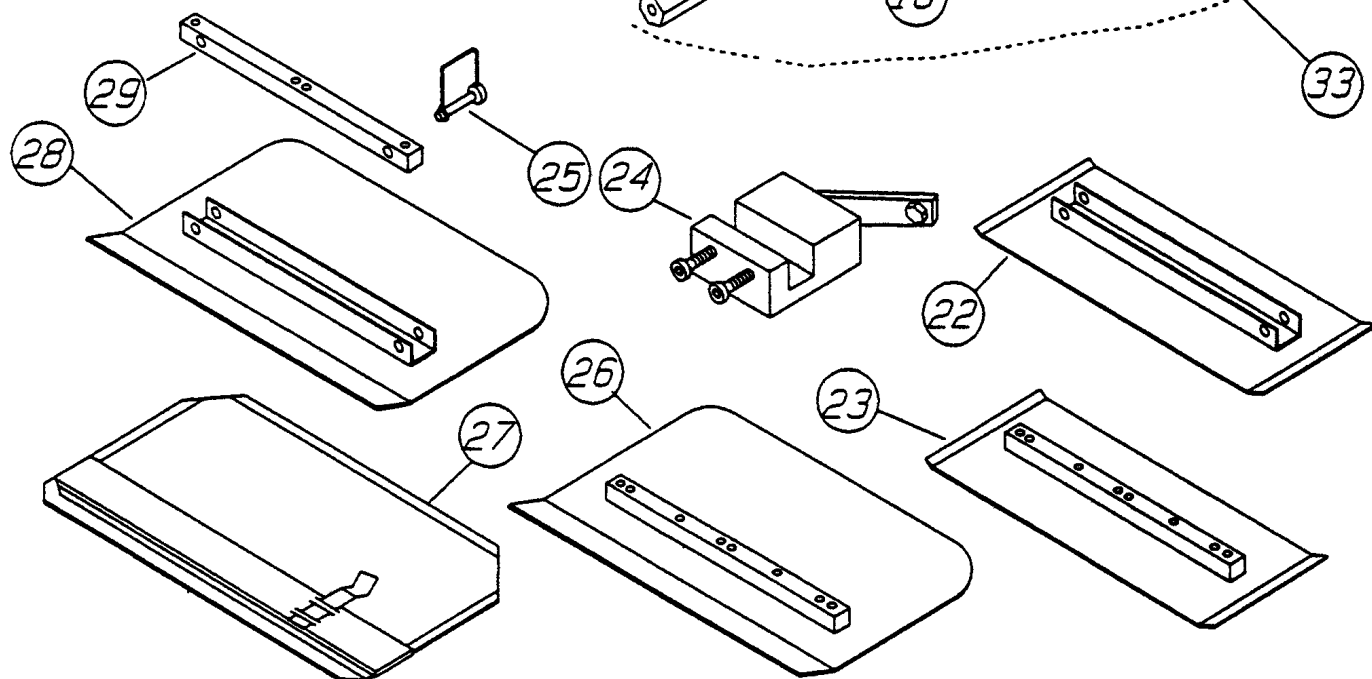
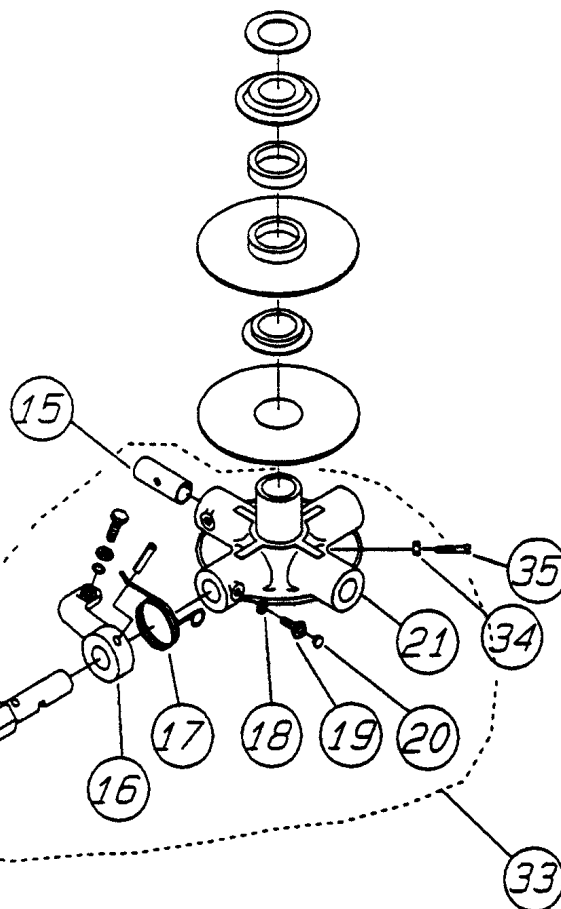
<u>NO.</u>	<u>PART NO.</u>	<u>PART NAME</u>	<u>QTY.</u>	<u>REMARKS</u>
30	10235	INT. LOCK WASHER 5/16"	8	
31	1143	O- RING	2	
32	9183	KEY	2	
33	2229	KEY	2	
34	2003	LEFT HAND WORM	1	
35	2250	LEFT HAND WORM GEAR	1	
36	1150	YOKE ARM	2	
37	1151	YOKE PIN	2	
38	10136	FLAT WASHER 3/8"	2	
39	0683	COTTER PIN	4	
40	10031	EXT. LOCK WASHER 1/4"	8	
41	10138	SHSS 1/4- 20 X 1/2"	2	
	2633	GASKET REPLACEMENT KIT		NOT SHOWN
	2617	BEARING REPLACEMENT KIT		NOT SHOWN
	2141	RIGHT SIDE GEARBOX ASSEMBLY		NOT SHOWN
	2151	LEFT SIDE GEARBOX ASSEMBLY		NOT SHOWN

JRT RIDE-ON POWER TROWEL — SPIDER & BLADES ASSY.

LEFT SIDE



RIGHT SIDE



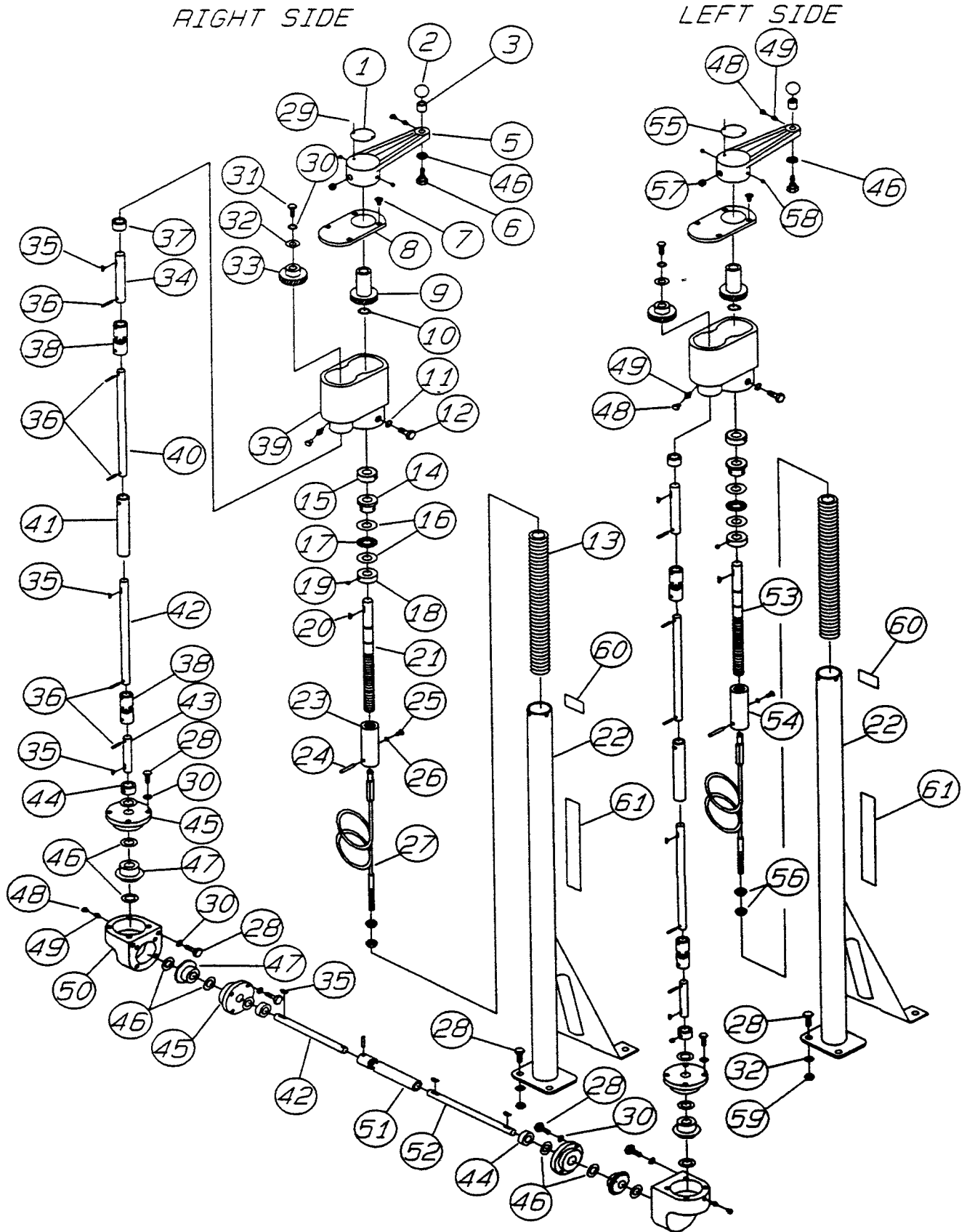
JRT RIDE-ON POWER TROWEL — SPIDER & BLADES ASSY.

SPIDER & BLADES ASSY.

<u>NO.</u>	<u>PART NO.</u>	<u>PART NAME</u>	<u>QTY.</u>	<u>REMARKS</u>
1	1803	WEAR PLATE	2	
2	1152	CAP- THRUST COLLAR	2	
3	1153	THRUST BEARING	2	
4	1471	THRUST COLLAR BUSHING	2	
5	1154A	WEAR PLATE	2	
6	4164	ROLL PIN	8	
7	164B	FULL THREAD RADIUS HEAD 3/8- 16 X 1.1/4	8	
8	1876	HEX JAM NUT 3/8- 16	8	
9	166A	LOCK WASHER 3/8"	8	
10	105	HHCS 5/16- 18 X 1.1/2"	16	
11	161C	LOCK WASHER 5/16"	16	
12	2826	TROWEL ARM	8	
13	1316	RIGHT HAND SPRING	4	
14	1163	RIGHT HAND TROWEL ARM LEVER	4	
15	1157A	BUSHING	8	
16	1555	LEFT HAND TROWEL ARM LEVER	8	
17	1317	LEFT HAND SPRING	4	
18	1875	INT. LOCK WASHER 3/8"	8	
19	1322	RETAINING SCREW	8	
20	1162A	LUBRA- CAP	8	
21	2136	LEFT HAND SPIDER	1	
22	1872	UNIVERSAL FIT FINISH BLADE	8	OPTIONAL
23	900	FINISH BLADE	8	OPTIONAL
24	1817	TROWEL ARM ADJUSTMENT FIXTURE	1	OPTIONAL
25	1869	SNAP PIN	16	OPTIONAL
26	844	COMBINATION FLOAT & FINISH BLADE	8	
27	954F	CLIP- ON FLOAT BLADE	8	OPTIONAL
28	1871	UNIVERSAL FIT COMBINATION BLADE	8	OPTIONAL
29	1857	UNIVERSAL FIT MOUNTING BAR	8	OPTIONAL
30	1899	RIGHT HAND SPIDER	1	
31	1898	THRUST COLLAR	2	INCLUDES ITEM #4
32	2279	LEFT SIDE SPIDER ASSEMBLY	1	RIGHT HAND ROTATION
33	2150	RIGHT SIDE SPIDER ASSEMBLY	1	LEFT HAND ROTATION
34	1456	HEX NUT 3/8- 16	2	
35	1167A	SQHSS 3/8-16 X 1.1/2"	2	

JRT RIDE-ON POWER TROWEL — TWIN PITCH CONTROL ASSY.

TWIN PITCH CONTROL ASSY.



JRT RIDE-ON POWER TROWEL — TWIN PITCH CONTROL ASSY.

TWIN PITCH CONTROL ASSY.

<u>NO.</u>	<u>PART NO.</u>	<u>PART NAME</u>	<u>QTY.</u>	<u>REMARKS</u>
1	2300	RIGHT SIDE DECAL	1	
2	4403	CRANK KNOB	2	
3	1632	SPACER	2	
5	1615	CRANK LEVER	2	
6	1616	SHOULDER BOLT	2	
7	2620	BHMS 10- 24 X 5/8"	8	
8	2649	COVER PLATE	2	
9	1529	MASTER GEAR	2	
10	1135	RETAINING RING	4	
11	161C	LOCK WASHER 5/16"	6	
12	655	HHCS 5/16- 18 X 3/4"	6	
13	2156	SPRING	2	
14	1612	BEARING	2	
15	1604	BEARING	2	
16	2169	THRUST WASHER	4	
17	2170	THRUST BEARING	2	
18	3615	SET COLLAR	2	FROM SD16747 TO SH18636
18	2367	SET COLLAR	2	FROM SH16837
19	685	SHSS 5/16- 18 X 5/16"	4	
20	126	WOODRUFF KEY	2	
21	2601	RT. SIDE PITCH CONTROL SCREW	1	FROM SD16747 TO SH18636
21	2061	RT. SIDE PITCH CONTROL SCREW	1	FROM SH16837
22	2131	PITCH CONTROL TUBE	2	
23	2281	RIGHT SIDE SLIDE BLOCK	1	
24	1114	ROLL PIN	2	
25	786	BUTTON HEAD CAP SCREW 1/4- 20 X 3/8"	2	
26	786A	SPACER	2	
27	2008	CABLE	2	
28	730	HHCS 1/4- 20 X 1"	28	
29	4014	SCREW	4	
30	181B	LOCK WASHER 1/4"	22	

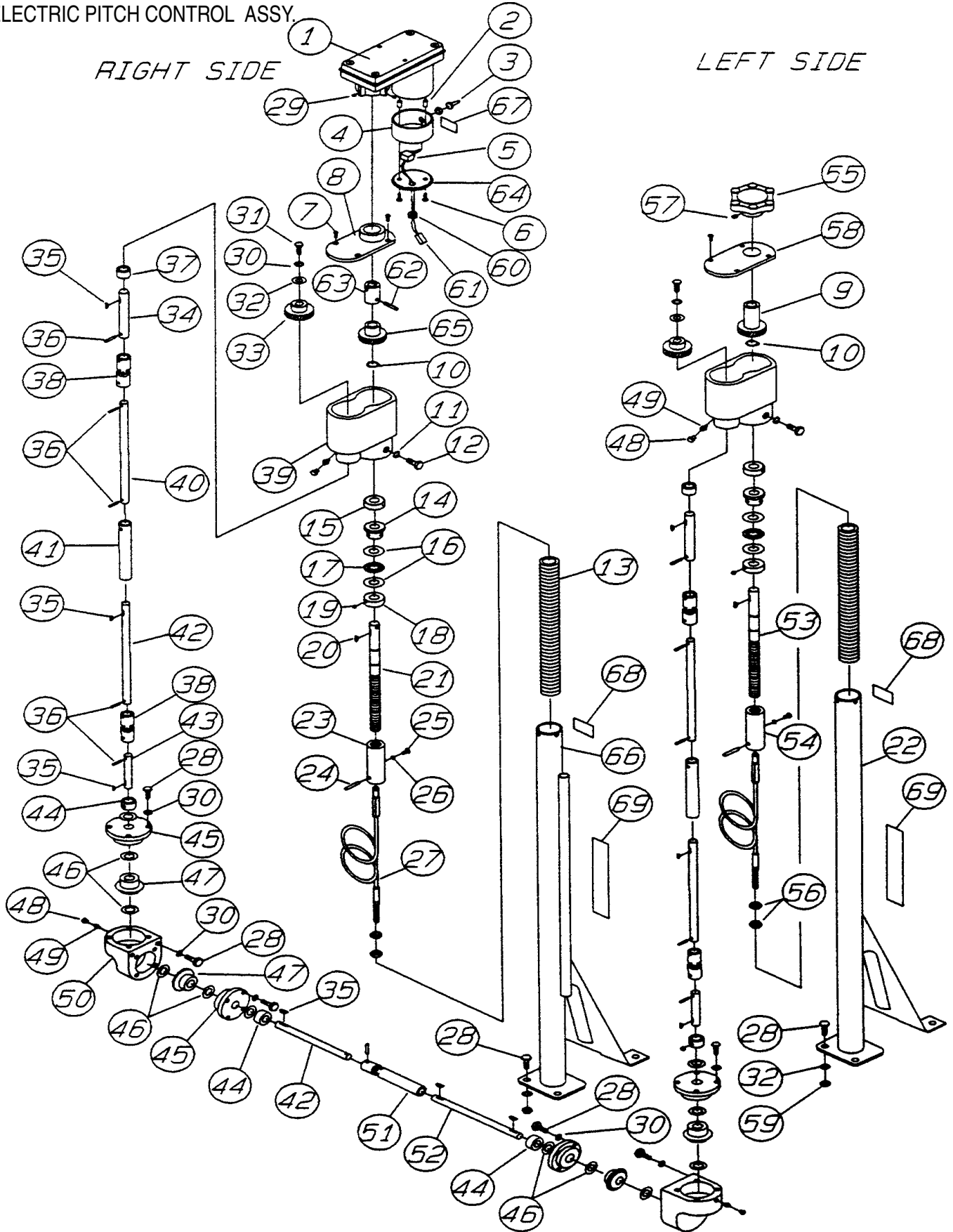
JRT RIDE-ON POWER TROWEL — TWIN PITCH CONTROL ASSY.

TWIN PITCH CONTROL ASSY.

<u>NO.</u>	<u>PART NO.</u>	<u>PART NAME</u>	<u>QTY.</u>	<u>REMARKS</u>
31	1579	HHCS 1/4- 20 X 1/2"	2	
32	0948	FLAT WASHER 1/4"	10	
33	1530	SLAVE GEAR	2	
34	2007	SHAFT	2	
35	1578	WOODRUFF KEY	9	
36	1586	ROLL PIN	11	
37	2311	SPACER	2	
38	1536	U- JOINT	4	
39	1523	HOUSING	2	
40	2023	SHAFT	2	
41	2012	SLEEVE	2	
42	2022	SHAFT	3	
43	2021	SHAFT	2	
44	1577	SET COLLAR	4	
45	1988	MITER BOX CAP	4	
46	1733	WASHER	14	
47	2062	MITER GEAR	4	
48	1162A	LUBRI- CAP	6	
49	2621	GREASE FITTING	6	
50	1987	MITER BOX		
51	2104	SLEEVE	1	
52	2026	SHAFT	1	
53	2010	LEFT SIDE PITCH CONTROL. SCREW	1	
54	2280	LEFT DIDE SLIDE BLOCK	1	
55	2332	LEFT SIDE DECAL	1	
56	1116	BRASS JAM NUT	4	
57	0185	SHSS 3/8- 16 X 3/8"	2	
58	1528	SHSS 1/4- 20 X 5/16"	4	
59	10024	LOCK NUT 1/4- 20	8	
60	2634	SPRING WARNING DECAL	2	
61	1499	WHITEMAN DECAL	2	

JRT RIDE-ON POWER TROWEL — ELECTRIC PITCH CONTROL ASSY.

ELECTRIC PITCH CONTROL ASSY.



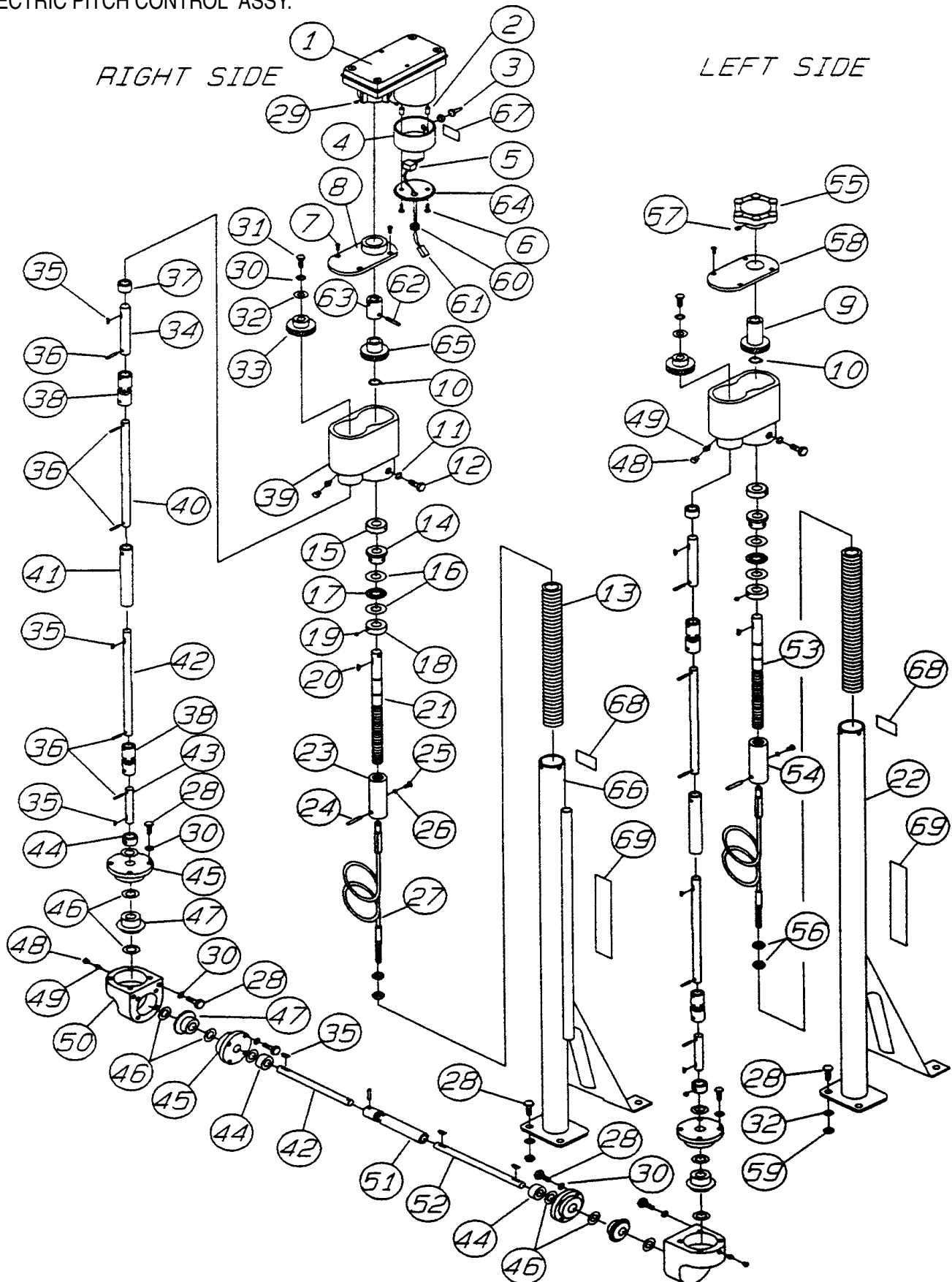
JRT RIDE-ON POWER TROWEL — ELECTRIC PITCH CONTROL ASSY.

ELECTRIC PITCH CONTROL ASSY.

<u>NO.</u>	<u>PART NO.</u>	<u>PART NAME</u>	<u>QTY.</u>	<u>REMARKS</u>
1	2595	POWER HEAD	1	
2	2675	BUSHING STAND OFF	2	
3	8381	BOOT SWITCH COVER	1	
4	2662	SWITCH HOUSING	1	
5	2596	SWITCH	1	
6	2699	RHMS 10- 32 X 1.1/2"	2	
7	2620	BHMS 10- 24 X 5/8"	8	
8	2592	COVER PLATE	2	
9	1529	MASTER GEAR	1	
10	1135	RETAINING RING	2	
11	161C	LOCK WASHER 5/16"	6	
12	655	HHCS 5/16- 18 X 3/4"	6	
13	2156	SPRING	2	
14	1612	BEARING	2	
15	1604	BEARING	2	
16	2170	THRUST WASHER	4	
17	2169	THRUST BEARING	2	
18	2367	SET COLLAR	2	
19	685	SHSS 5/16- 18 X 5/16"	6	
20	0126	WOODRUFF KEY	2	
21	2679	RIGHT SIDE PITCH CONTROL SCREW	1	
22	2131	LEFT SIDE PITCH CONTROL TUBE	2	
23	2281	RIGHT SIDE SLIDE BLOCK	1	
24	1114	ROLL PIN	2	
25	786	BUTTON HEAD CAP SCREW 1/4- 20 X 3/8"	2	
26	786A	SPACER	2	
27	2008	CABLE	2	
28	730	HHCS 1/4- 20 X 1"	28	
29	10138	SHSS 1/4- 20 X 1/2"	6	
30	181B	LOCK WASHER 1/4"	22	
31	1529	HHCS 1/4- 20 X 1/2"	2	
32	948	FLAT WASHER 1/4"	10	
33	1530	SLAVE GEAR	2	
34	2007	SHAFT	2	
35	1578	WOODRUFF KEY	9	

JRT RIDE-ON POWER TROWEL — ELECTRIC PITCH CONTROL ASSY.

ELECTRIC PITCH CONTROL ASSY.



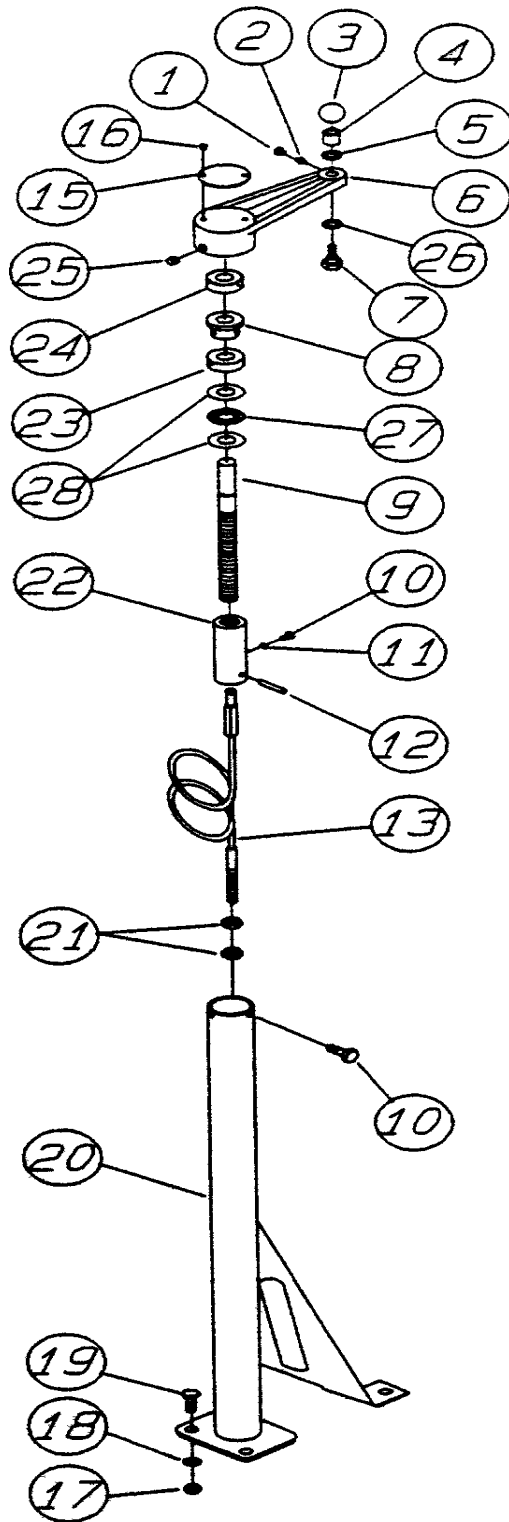
JRT RIDE-ON POWER TROWEL — ELECTRIC PITCH CONTROL ASSY.

ELECTRIC PITCH CONTROL ASSY.

<u>NO.</u>	<u>PART NO.</u>	<u>PART NAME</u>	<u>QTY.</u>	<u>REMARKS</u>
36	1586	ROLL PIN	11	
37	2311	SPACER	2	
38	1536	U- JOINT	4	
39	1523	HOUSING	2	
40	2023	SHAFT	2	
41	2012	SLEEVE	2	
42	2022	SHAFT	3	
43	2021	SHAFT	2	
44	1577	SET COLLAR	4	
45	1988	MITER BOX CAP	4	
46	1733	WASHER	12	
47	2062	MITER GEAR	4	
48	1162A	LUBRI- CAP	4	
49	2621	GREASE FITTING	4	
50	1978	MITER BOX	2	
51	2104	SLEEVE	1	
52	2821	SHAFT	1	
53	2010	LEFT SIDE PITCH CONTROL SCREW	1	
54	2280	LEFT SIDE SLIDE BLOCK	1	
55	2591	STAR WHEEL	1	
56	1116	BRASS JAM NUT	4	
57	1528	SHSS 1/4- 20 X 5/16"	2	
58	2649	COVER PLATE	1	
59	10024	LOCK NUT 1/4- 20	8	
60	2678	GROMMET	1	
61	2668	WIRE HARNESS	1	
62	2695	ROLL PIN 1/4" X 1.1/8"	1	
63	2593	SLEEVE ADAPTER	1	
64	2663	SWITCH HOUSING CAP	1	
65	2698	ELECTRIC PITCH GEAR	1	
66	2660	RIGHT SIDE PITCH CONTROL TUBE	1	
67	2881	BLADE PITCH DECAL	1	
68	2634	SPRING WARNING DECAL	2	
69	1499	WHITEMAN DECAL	2	

JRT RIDE-ON POWER TROWEL — SINGLE PITCH CONTROL ASSY.

SINGLE PITCH CONTROL ASSY.



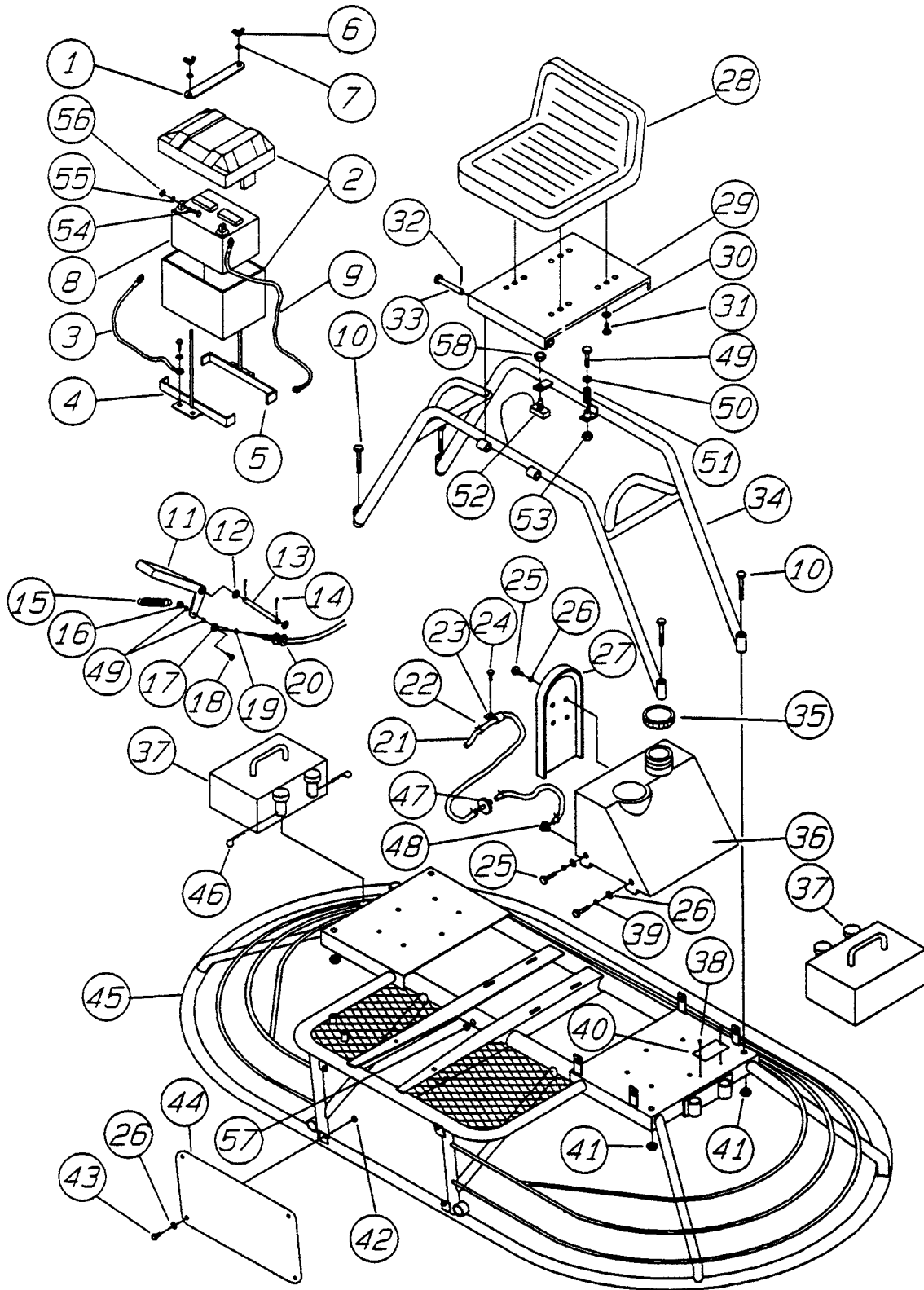
JRT RIDE-ON POWER TROWEL — SINGLE PITCH CONTROL ASSY.

SINGLE PITCH CONTROL ASSY.

<u>NO.</u>	<u>PART NO.</u>	<u>PART NAME</u>	<u>QTY.</u>	<u>REMARKS</u>
1	1162A	LUBRA- CAP	2	
2	2621	GREASE FITTING	2	
3	4403	CRANK KNOB	2	
4	1632	SPACER	2	
6	2575	CRANK LEVER	2	
7	1616	SHOULDER BOLT	2	
8	1111	BEARING	2	
9	2429	TROWEL CONTROL SCREW	2	
10	786	BHCS 1/4- 20 X 3/8"	4	
11	768A	SPACER	2	
12	1114	ROLL PIN	2	
13	2008	CABLE	2	
15	2300	PITCH CONTROL DECAL	2	
16	4014	SCREW	4	
17	10024	LOCK NUT 1/4- 20	8	
18	948	FLAT WASHER 1/4"	8	
19	730	HHCS 1/4- 20 X 1"	8	
20	2131	PITCH CONTROL TUBE	2	
21	1116	BRASS JAM NUT	4	
22	2281	SLIDE BLOCK	2	
23	2367	SET COLLAR	2	
24	0281	THRUST BEARING	2	
25	0185	SHSS 3/8- 16 X 3/8"	2	
26	1733	FLAT WASHER	2	
27	2169	THRUST BEARING	2	
28	2170	THRUST WASHER	4	

JRT RIDE-ON POWER TROWEL — FRAME ASSY.

FRAME ASSY.



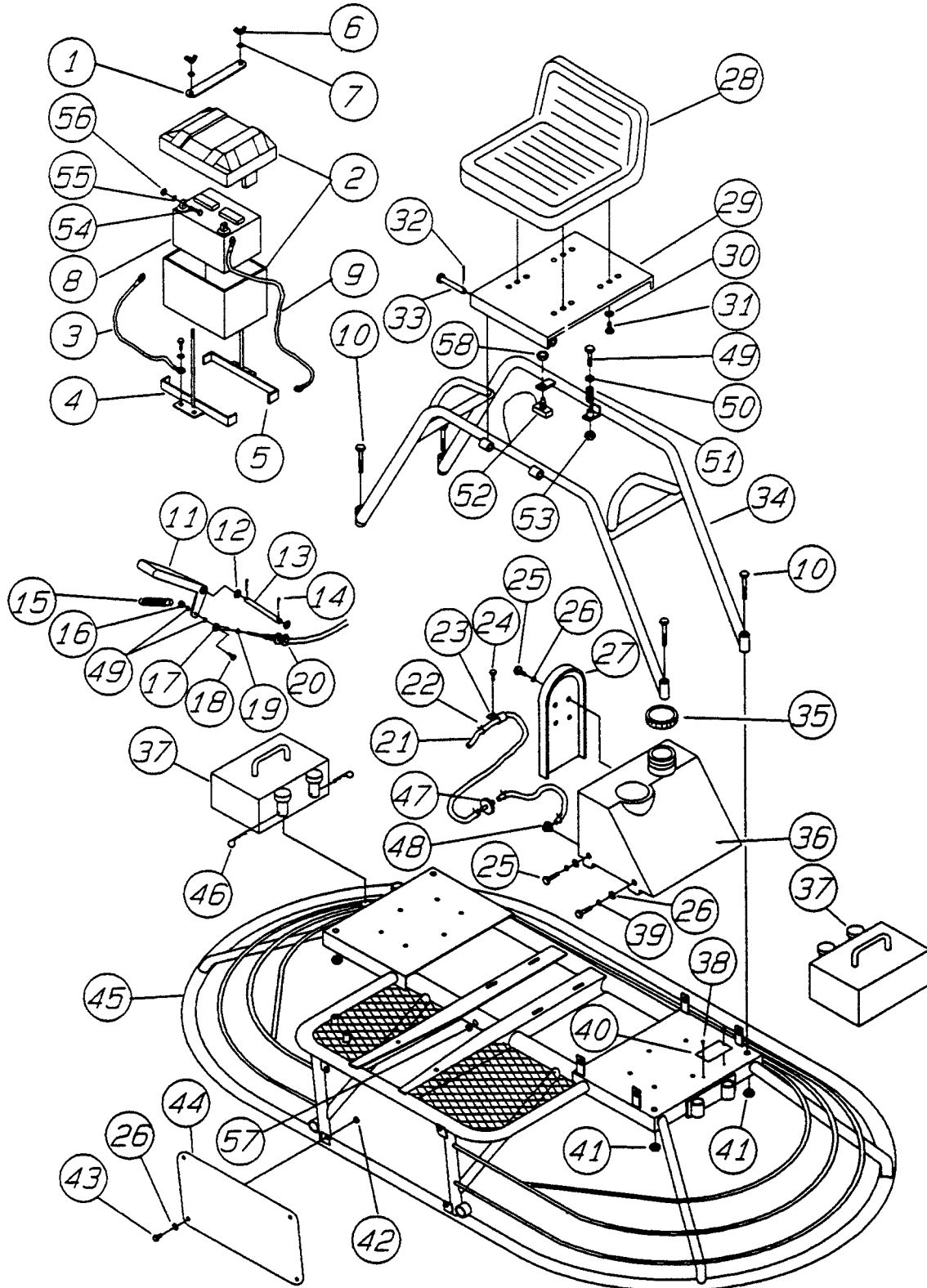
JRT RIDE-ON POWER TROWEL — FRAME ASSY.

FRAME ASSY.

<u>NO.</u>	<u>PART NO.</u>	<u>PART NAME</u>	<u>QTY.</u>	<u>REMARKS</u>
1	2482	BATTERY STRAP	1	FROM RB20721
2	2449	BATTERY BOX	1	FROM RB20721
3	1597	NEGATIVE BATTERY CABLE (BLACK)	1	
4	2484	FRONT BATTERY BRACKET (W /BATTERYBOX) ..	1	FROM RB20721
5	2483	REAR BATTERY BRACKET (W /BATTERY BOX) ...	1	FROM RB20721
6	2509	WING NUT 1/4- 20	2	
7	10031	EXT. SHAKEPROOF WASHER 1/4"	2	
8	4671	BATTERY 12V DRY (GROUP U- 1)	1	
9	2542	POSITIVE BATTERY CABLE (RED)	1	
10	2549	HHCS 1/2- 13 X 3"	4	
11	2086	ACCELERATOR PEDAL	1	
12	10136	FLAT WASHER 3/8"	2	
13	2016	PIN	1	
14	6014B	COTTER PIN	2	
15	2192	SPRING	1	
16	2194	THROTTLE NUT	1	
17	2153	SPHERICAL BEARING	1	
18	2154	HHCS 10- 32 X 1.1/4"	1	
19	937	HEX NUT 10- 32	1	
20	2124	THROTTLE CABLE	1	
21	2135	FUEL LINE	1	TRIM AS REQUIRED
22	2138	HOSE CLAMP	4	
23	8126	CLAMP	1	
24	2299	HHCS 8MM- 1.25 X 15MM	1	
25	4514	HHCS 1/4- 20 X 5/8"	6	
26	948	1/4" FLAT WASHER	10	
27	2313	SPARE BELT CARRIER	1	
28	2351	SEAT	1	FROM RD21635
29	2421	SEAT MOUNTING PLATE		FROM RD21635
30	161C	5/16" LOCK WASHER	4	FROM RD21635
31	1237	SHCS 5/16= 18 X 7/8"	4	
32	183	COTTER PIN	2	
33	8081	CLEVIS PIN	2	
34	2889	SEAT FRAME	1	FROM RB20721
34	2889	SEAT FRAME JRT92 MODEL	1	FROM PA2080
35	2712	FUEL CAP	1	

JRT RIDE-ON POWER TROWEL — FRAME ASSY.

FRAME ASSY.



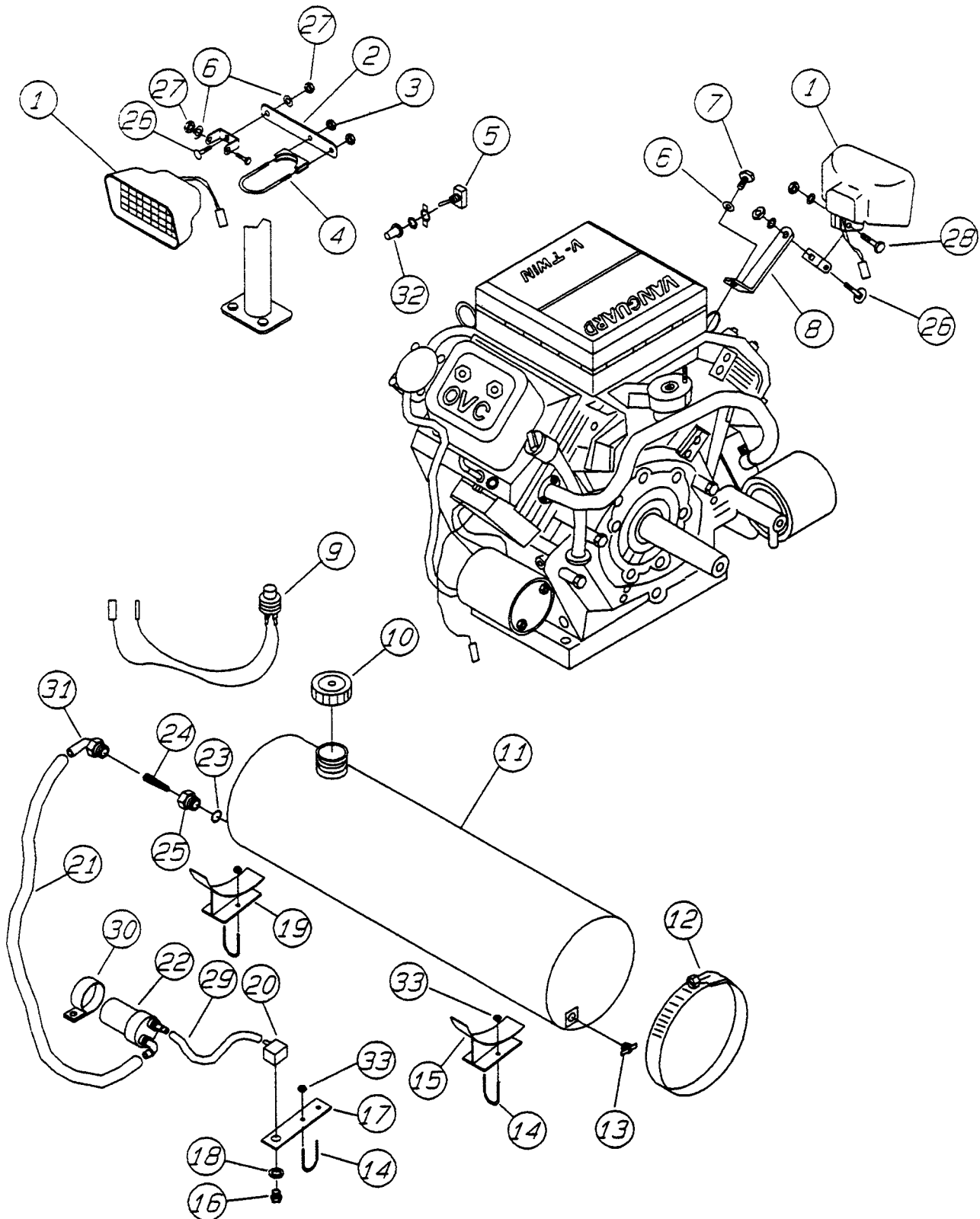
JRT RIDE-ON POWER TROWEL — FRAME ASSY.

FRAME ASSY.

<u>NO.</u>	<u>PART NO.</u>	<u>PART NAME</u>	<u>QTY.</u>	<u>REMARKS</u>
36	2028	FUEL TANK	1	
37	2493	WEIGHT (OPTIONAL)	2	FROM RD21635
38	4014	U- DRIVE SCREW	2	
39	181B	1/4" LOCK WASHER	4	
40	1491	SERIAL # PLATE	1	
41	10176	1/2- 13 HEX LOCK NUT	4	
42	10124	1/4- 20 HEX LOCK NUT	4	FROM QA24492
43	131A	HHCS 1/4- 20 X 3/4"	4	FROM QA24492
44	2535	FRONT PANEL	1	FROM QA24492
45	2347	MAIN FRAME	1	
46	7170	WEIGHT CLIP	4	FROM RD21635
47	2346	FUEL FILTER	1	
48	2161	FUEL VALVE	1	
49	8156	HHCS- 3/8- 16 X 2.1/2", MODEL JRT92	1	FROM PA2080
50	4001	FLAT WASHER, MODEL JRT92	1	FROM PA2080
51	2585	SPRING, COIL, MODEL JRT92	1	FROM PA2080
52	2584	SWITCH KILL, MODEL JRT92	1	FROM PA2080
53	10133	FLEXLOCK NUT 3/8- 16, MODEL JRT92	1	FROM PA2080
54	0131A	HHCS 1/4- 20 X 3/4"	2	
55	0181B	1/4" LOCK WASHER, MODEL JRT92	2	FROM PA2080
56	0949	1/4- 20 HEX NUT	2	
57	2574	RUBBER GROMMET	1	FROM PG20080
57	2923	RUBBER GROMMET	1	TO PG30041
58	2906	PANEL NUT, MODEL JRT92	1	FROM 2080

JRT RIDE-ON POWER TROWEL — LIGHTS & RETARDANT SPRAY ASSY.

LIGHTS & RETARDANT SPRAY OPTIONS ASSY.



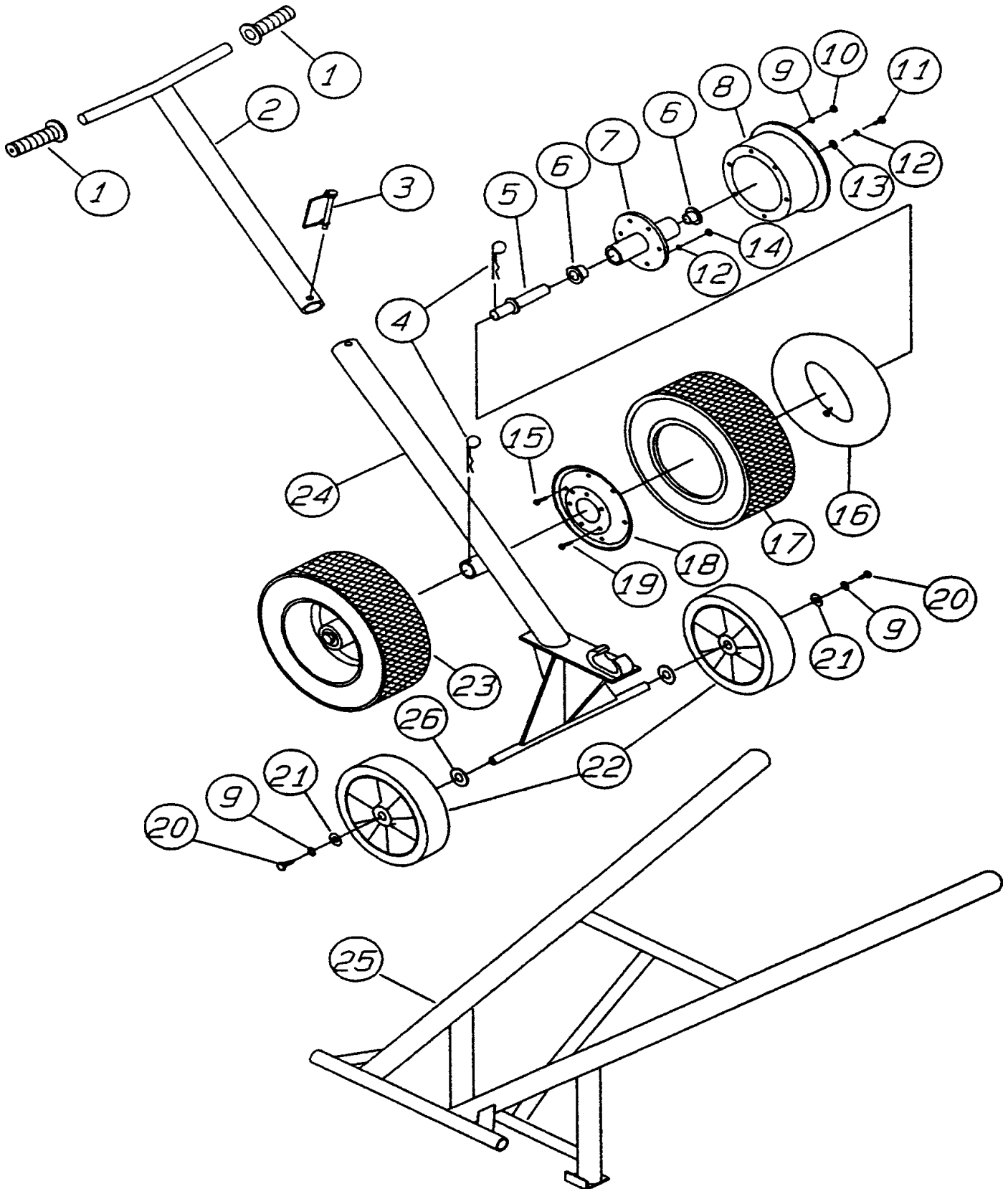
JRT RIDE-ON POWER TROWEL — LIGHTS & RETARDANT SPRAY ASSY.

LIGHTS & RETARDANT SPRAY OPTIONS ASSY.

<u>NO.</u>	<u>PART NO.</u>	<u>PART NAME</u>	<u>QTY.</u>	<u>REMARKS</u>
1	2896	LIGHT AND MOUNTING HARDWARE	3	
2	2531	FRONT MOUNTING BRACKET	2	
3	5283	NUT, LOCK 5/16- 18	4	
4	2534	CLAMP ASSEMBLY	2	
5	4682	SWITCH	1	
6	161C	WASHER, LOCK 5/16"	7	
7	2299	HHCS 8MM X 1.25 X 15MM	1	
8	2430	BRACKET, REAR MOUNTING	1	
9	2765	BUTTON, RETARDANT SPRAY	1	
10	2108	CAP, TANK	1	
11	2396	RETARDANT TANK.....	1	TO PG29038
11	2916	RETARDANT TANK.....	1	FROM PG29039
12	2398	CLAMP	2	
13	2478	DRAIN COCK	1	
14	2399	U- BOLT	2	
15	2887	MOUNTING BRACKET RIGHT	1	
16	392292	SPRAY NOZZLE	1	
17	2873	MOUNTING BRACKET	1	
18	2898	RUBBER WASHER	1	
19	2886	MOUNTING BRACKET LEFT	1	
20	2912	90 DEGREE FITTING	1	
21	2914	HOSE	1	
22	2924	PUMP ASSEMBLY	1	
23	2285	O- RING	2	TO PG29038
24	2926	STRAINER	1	
25	2557	FITTING	1	TO PG29038
26	0655	HHCS 5/16- 18 X 3/4"	3	
27	161D	HEX NUT 5/16- 18	6	
28	300A	HHCS 5/16- 18 X 2"	3	
29	2913	LOWER HOSE	1	
30	2904	CLAMP	1	
31	2925	ELBOW 90 DEGREE	1	
32	8381	SWITCH BOOT	1	
33	2656	LOCK NUT 5/16- 24	6	

JRT RIDE-ON POWER TROWEL — E-Z MOVER & LIFT HANDLE ASSY.

E-Z MOVER & LIFT HANDLE ASSY.



JRT RIDE-ON POWER TROWEL — E-Z MOVER & LIFT HANDLE ASSY.

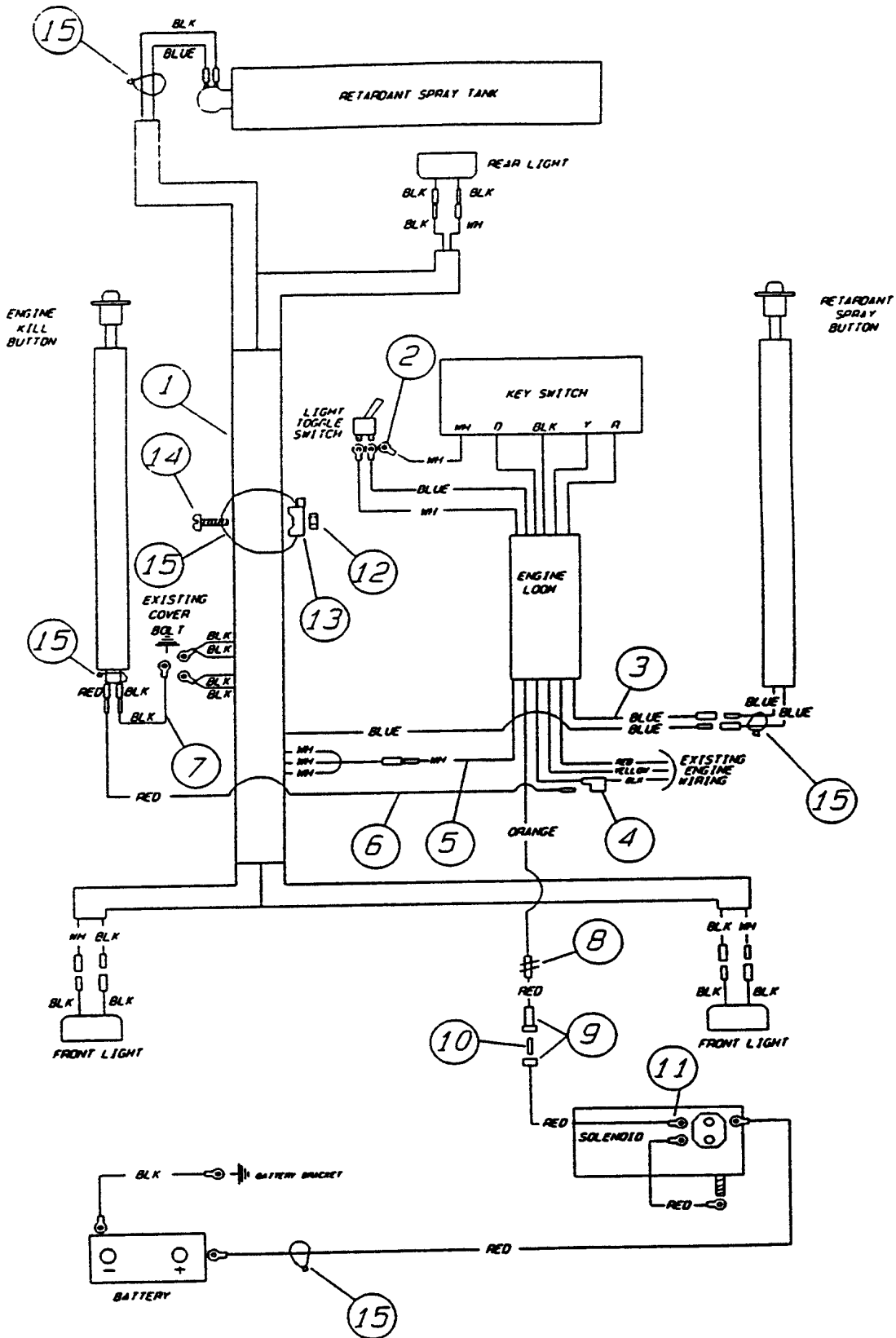
E-Z MOVER & LIFT HANDLE ASSY.

E- Z MOVER & LIFT HANDLE ASSY.

<u>NO.</u>	<u>PART NO.</u>	<u>PART NAME</u>	<u>QTY.</u>	<u>REMARKS</u>
1	189	HAND GRIP	2	
2	2336	E- Z MOVER HANDLE	1	
3	1869	SNAP PIN	1	
4	7170	CLIP	2	
5	2340	DOLLY AXLE	2	
6	1671	BEARING	2	
7	2341	DOLLY HUB	2	
8	5050A	WHEEL BODY	2	
9	161C	LOCK WASHER 5/16"	14	
10	6014C	NUT 5/16- 24	12	
11	205	HHCS 3/8- 16 X 1"	2	
12	166A	LOCK WASHER 3/8"	14	
13	4001	FLAT WASHER 3/8"	2	
14	5023B	HEX NUT 3/8- 24	12	
15	5050C	HHCS 5/16- 24 X 3/4"	12	
16	5051A	INNER TUBE	2	
17	5051	TIRE	2	
18	5050B	WHEEL COVER	2	
19	1672	HHCS 3/8- 24 X 1"	12	
20	655	HHCS 5/16- 18 X 1/2"	2	
21	300B	FLAT WASHER 5/16"	2	
22	2364	WHEEL	2	
23	5049	DOLLY WHEEL ASSEMBLY	2	ITEMS, 8,9,10,15,16,17,18
24	2337	E- Z MOVER FRAME	1	
25	2210	LIFT HANDLE	2	OPTIONAL
26	4684	FLAT WASHER 5/8"	2	

JRT RIDE-ON POWER TROWEL — WIRING DIAGRAM ASSY.

WIRING DIAGRAM ASSY.



JRT RIDE-ON POWER TROWEL — WIRING DIAGRAM ASSY.

WIRING DIAGRAM ASSY.

THE FOLLOWING PARTS ARE EFFECTIVE FOR MACHINES WITH SERIAL NUMBERS PRIOR TO PA27079

<u>NO.</u>	<u>PART NO.</u>	<u>PART NAME</u>	<u>QTY.</u>	<u>REMARKS</u>
1	2566	WIRING HARNESS ASSEMBLY	1	
2	4693	RING TERMINAL	1	
3	2609	POWER WIRE (RETARDANT SPRAY)	1	
4	1475	WIRE CLIP	1	
5	2608	POWER WIRE (LIGHTS)	1	
6	2606	POWER WIRE (ENGINE KILL)	1	
7	2607	GROUND WIRE (ENGINE KILL)	1	
8	2540	BUTT SPLICE CONNECTOR	1	
9	2328	IN- LINE FUSE HOLDER	1	
10	2538	FUSE 20 AMP	1	
11	1319	RING TERMINAL	1	
12	10019	HEX NUT 10- 32	2	
13	2548	WIRE CLAMP	2	
14	5065B	RHMS 10- 32 X 1"	2	
15	1662	WIRE TIES	14	
16	0131A	HHCS 1/4- 20 X 3/4"	2	
17	0181B	LOCK WASHER 1/4"	2	
18	0949	HEX NUT 1/4- 20	2	

JRT RIDE-ON POWER TROWEL — WIRING DIAGRAM ASSY.

WIRING DIAGRAM ASSY.

THE FOLLOWING PARTS ARE EFFECTIVE FOR MACHINES WITH SERIAL NUMBERS PA27079 AND AFTER

<u>NO.</u>	<u>PART NO.</u>	<u>PART NAME</u>	<u>QTY.</u>	<u>REMARKS</u>
1	1662	WIRE TIES	14	
2	2566	WIRING HARNESS ASSEMBLY	1	
3	5065B	RHMS 10- 32 X 1"	2	
4	2548	WIRE CLAMP	2	
5	10019	HEX NUT 10- 32	2	
6	2776	ENGINE HARNESS	1	

PAYMENT TERMS

Terms of payment for parts are net 10 days.

FREIGHT POLICY

All parts orders will be shipped collect or prepaid with the charges added to the invoice. All shipments are F.O.B. point of origin. Multiquip's responsibility ceases when a signed manifest has been obtained from the carrier, and any claim for shortage or damage must be settled between the consignee and the carrier.

MINIMUM ORDER

The minimum charge for orders from Multiquip is \$15.00 net. Customers will be asked for instructions regarding handling of orders not meeting this requirement.

RETURNED GOODS POLICY

Return shipments will be accepted and credit will be allowed, subject to the following provisions:

1. A Returned Material Authorization must be approved by Multiquip prior to shipment.
2. To obtain a Return Material Authorization, a list must be provided to Multiquip Parts Sales that defines item numbers, quantities, and descriptions of the items to be returned.
 - a. The parts numbers and descriptions must match the current parts price list.
 - b. The list must be typed or computer generated.
 - c. The list must state the reason(s) for the return.
 - d. The list must reference the sales order(s) or invoice(s) under which the items were originally purchased.
 - e. The list must include the name and phone number of the person requesting the RMA.
3. A copy of the Return Material Authorization must accompany the return shipment.

4. Freight is at the sender's expense. All parts must be returned freight prepaid to Multiquip's designated receiving point.
5. Parts must be in new and resalable condition, in the original Multiquip package (if any), and with Multiquip part numbers clearly marked.
6. The following items are not returnable:
 - a. Obsolete parts. (If an item is listed in the parts price book as being replaced by another item, it is obsolete.)
 - b. Any parts with a limited shelf life (such as gaskets, seals, "O" rings, and other rubber parts) that were purchased more than six months prior to the return date.
 - c. Any line item with an extended dealer net price of less than \$5.00.
 - d. Special order items.
 - e. Electrical components.
 - f. Paint, chemicals, and lubricants.
 - g. Decals and paper products.
 - h. Items purchased in kits.
7. The sender will be notified of any material received that is not acceptable.
8. Such material will be held for 5 working days from notification, pending instructions. If a reply is not received within 5 days, the material will be returned to the sender at his expense.
9. Credit on returned parts will be issued at dealer net price at time of the original purchase, less a 15% restocking charge.
10. In cases where an item is accepted for which the original purchase document can not be determined, the price will be based on the list price that was effective twelve months prior to the RMA date.
11. Credit issued will be applied to future purchases only.

PRICING AND REBATES

Prices are subject to change without prior notice. Price changes are effective on a specific date and all orders received on or after that date will be billed at the revised price. Rebates for price declines and added charges for price increases will not be made for stock on hand at the time of any price change.

Multiquip reserves the right to quote and sell direct to Government agencies, and to Original Equipment Manufacturer accounts who use our products as integral parts of their own products.

SPECIAL EXPEDITING SERVICE

A \$20.00 to \$50.00 surcharge will be added to the invoice for special handling including bus shipments, insured parcel post or in cases where Multiquip must personally deliver the parts to the carrier.

LIMITATIONS OF SELLER'S LIABILITY

Multiquip shall not be liable here under for damages in excess of the purchase price of the item with respect to which damages are claimed, and in no event shall Multiquip be liable for loss of profit or good will or for any other special, consequential or incidental damages.

LIMITATION OF WARRANTIES

No warranties, express or implied, are made in connection with the sale of parts or trade accessories nor as to any engine not manufactured by Multiquip. Such warranties made in connection with the sale of new, complete units are made exclusively by a statement of warranty packaged with such units, and Multiquip neither assumes nor authorizes any person to assume for it any other obligation or liability whatever in connection with the sale of its products. A part from such written statement of warranty, there are no warranties, express, implied or statutory, which extend beyond the description of the products on the face hereof.

PARTS AND OPERATION MANUAL

HERE'S HOW TO GET HELP

*PLEASE HAVE THE MODEL AND SERIAL NUMBER
ON-HAND WHEN CALLING*

PARTS DEPARTMENT

800-427-1244 or 310-537-3700

FAX: 800-672-7877 or 310-637-3284

SERVICE DEPARTMENT/TECHNICAL ASSISTANCE

800-478-1244 or 310-537-3700

FAX: 310- 537-4259

WARRANTY DEPARTMENT

888-661-4279, or 310-661-4279

FAX: 310- 537-1173

MAIN

800-421-1244 or 310-537-3700

FAX: 310-537-3927



MULTIQUIP INC.

18910 WILMINGTON AVE.
CARSON, CALIFORNIA 90746
310-537-3700
800-421-1244
FAX: 310-537-3927

E-mail: mq@multiquip.com • **www:** www.multiquip.com

Atlanta • Boise • Dallas • Houston • Newark
Montreal, Canada • Manchester, UK
Rio De Janeiro, Brazil • Guadalajara, Mexico

PARTS DEPARTMENT:

800-427-1244
FAX: 800-672-7877

SERVICE DEPARTMENT/TECHNICAL ASSISTANCE:

800-478-1244
FAX: 310-631-5032