

# PARTS MANUAL



## HRT RIDE-ON POWER TROWEL

© COPYRIGHT 2002, MULTIQUIP INC.

Revision #1 (11/04/02)



**MULTIQUIP INC.**

18910 WILMINGTON AVE.  
CARSON, CALIFORNIA 90746  
310-537-3700  
800-421-1244  
FAX: 310-537-3927

**E-mail:** [mq@multiquip.com](mailto:mq@multiquip.com) • **www:** [www.multiquip.com](http://www.multiquip.com)

**PARTS DEPARTMENT:**

800-427-1244  
FAX: 800-672-7877

**SERVICE DEPARTMENT/TECHNICAL ASSISTANCE:**

800-478-1244  
FAX: 310-631-5032

Atlanta • Boise • Dallas • Houston • Newark  
Montreal, Canada • Manchester, UK  
Rio De Janeiro, Brazil • Guadalajara, Mexico

## **HERE'S HOW TO GET HELP**

*PLEASE HAVE THE MODEL AND SERIAL NUMBER  
ON-HAND WHEN CALLING*

### ***PARTS DEPARTMENT***

*800/427-1244 or 310/537-3700*

*FAX: 800/672-7877 or 310/637-3284*

### ***SERVICE DEPARTMENT***

*800/478-1244 or 310/537-3700*

*FAX: 310 - 537-4259*

### ***WARRANTY DEPARTMENT***

*800/421-1244, EXT. 279 or 310/537-3700*

*FAX: 310 - 537-1173*

### ***MAIN***

*800/421-1244 or 310/537-3700*

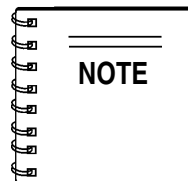
*FAX: 310 - 537-3927*

Here's How To Get Help ..... 2  
Table of Contents ..... 3  
Parts Ordering Procedures ..... 4-5

**MQ WHITEMAN HRT RIDE-  
ON POWER TROWEL**

Explanation of Codes in Remarks Column ..... 6  
Suggested Spare Parts ..... 7  
Onan Engine & Clutch Assembly ..... 8-11  
Kohler 20HP Engine & Clutch Assembly ..... 12-15  
Kohler 25HP Engine & Clutch Assembly ..... 16-19  
Drive Assembly ..... 20-21  
Steering Assembly ..... 22-23  
Steering Assembly ..... 24-25  
Gearbox Adapter Plates ..... 26-27  
Gearbox Assembly ..... 28-31  
Spider & Blades Assembly ..... 32-33  
Twin Pitch Control Assembly ..... 34-37  
Electric Pitch Control Assembly ..... 38-41  
Single Pitch Control Assembly ..... 42-43  
Main Frame Assembly ..... 44-47  
Seat Frame Assembly ..... 48-49  
Lights & Retardant Spray (Options) Assy. .... 50-51  
E-Z Mover & Lift Handle Assembly ..... 52-53  
Wiring Diagram ..... 54-55

Terms and Conditions of Sale ..... 56



*Specification and part number  
are subject to change without  
notice.*

# PARTS ORDERING PROCEDURES

- Dealer account number
- Dealer name and address
- Shipping address (if different than billing address)
- Return fax number
- Applicable model number
- Quantity, part number and description of each part
- Specify preferred method of shipment:
  - UPS Ground
  - UPS Second Day or Third Day\*
  - UPS Next Day\*
  - Federal Express Priority One (please provide us with your Federal Express account number)\*
  - Airborne Express\*
  - Truck or parcel post

*\*Normally shipped the same day the order is received, if prior to 2PM west coast time.*

## Earn Extra Discounts when you order by FAX!

All parts orders which include complete part numbers and are received by fax qualify for the following extra discounts:

<u>Number of line items ordered</u>	<u>Additional Discount</u>
1-9 items	3%
10+ items**	5%

### Get special freight allowances when you order 10 or more line items via FAX!\*\*

- UPS Ground Service at no charge for freight
- UPS Third Day Service at one-half of actual freight cost

No other allowances on freight shipped by any other carrier.

\*\*Common nuts, bolts and washers (all items under \$1.00 list price) do not count towards the 10+ line items.

\*DISCOUNTS ARE SUBJECT TO CHANGE\*

Fax order discount and UPS special programs revised June 1, 1995

**Extra Fax Discount  
for Domestic USA  
Dealers Only**

**Up to 5%  
extra savings!**

**UPS  
Special**  
For faxed orders only

**Now! Direct TOLL-FREE access  
to our Parts Department!**

Toll-free nationwide:

800-421-1244

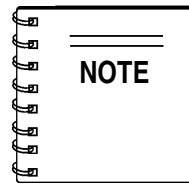
Toll-free FAX:

800/6-PARTS-7 • 800-672-7877



# EXPLANATION OF CODE IN REMARKS COLUMN

How to read the marks and remarks used in this parts book.



*The contents of this catalog are subject to change without notice.*

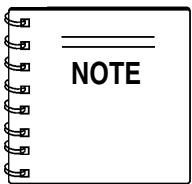
## Items Found In the “Remarks” Column

**Serial Numbers**-Where indicated, this indicates a serial number range (inclusive) where a particular part is used.

**Model Number**-Where indicated, this shows that the corresponding part is utilized only with this specific model number or model number variant.

## Items Found In the “Items Number” Column

All parts with same symbol in the number column, \*, #, +, %, or ■, belong to the same assembly or kit.

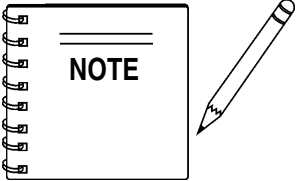


If more than one of the same reference number is listed, the last one listed indicates newest (or latest) part available.

# HRT RIDE-ON POWER TROWEL — SUGGESTED SPARE PARTS

## HRTRIDE-ON POWER TROWEL 1 TO 3 UNITS

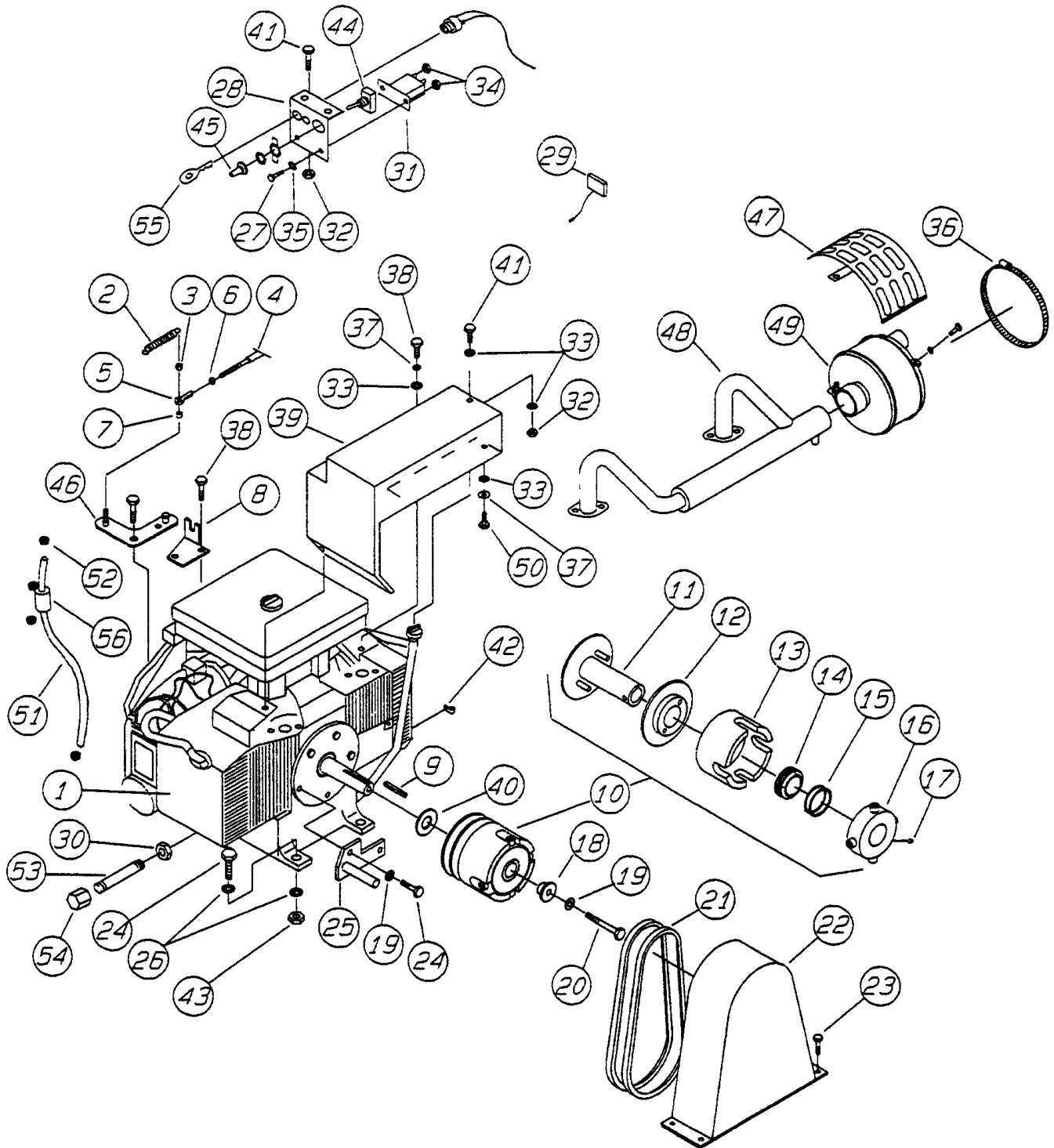
Qty.	P/N	Description
1	bbbbbb	CCCCCCCC



Part number on this Suggested Spare Parts List may super cede/replace the P/N shown in the text pages of this book.

# HRT RIDE-ON POWER TROWEL — ONAN ENGINE & CLUTCH ASSY.

ONAN ENGINE & CLUTCH ASSY.



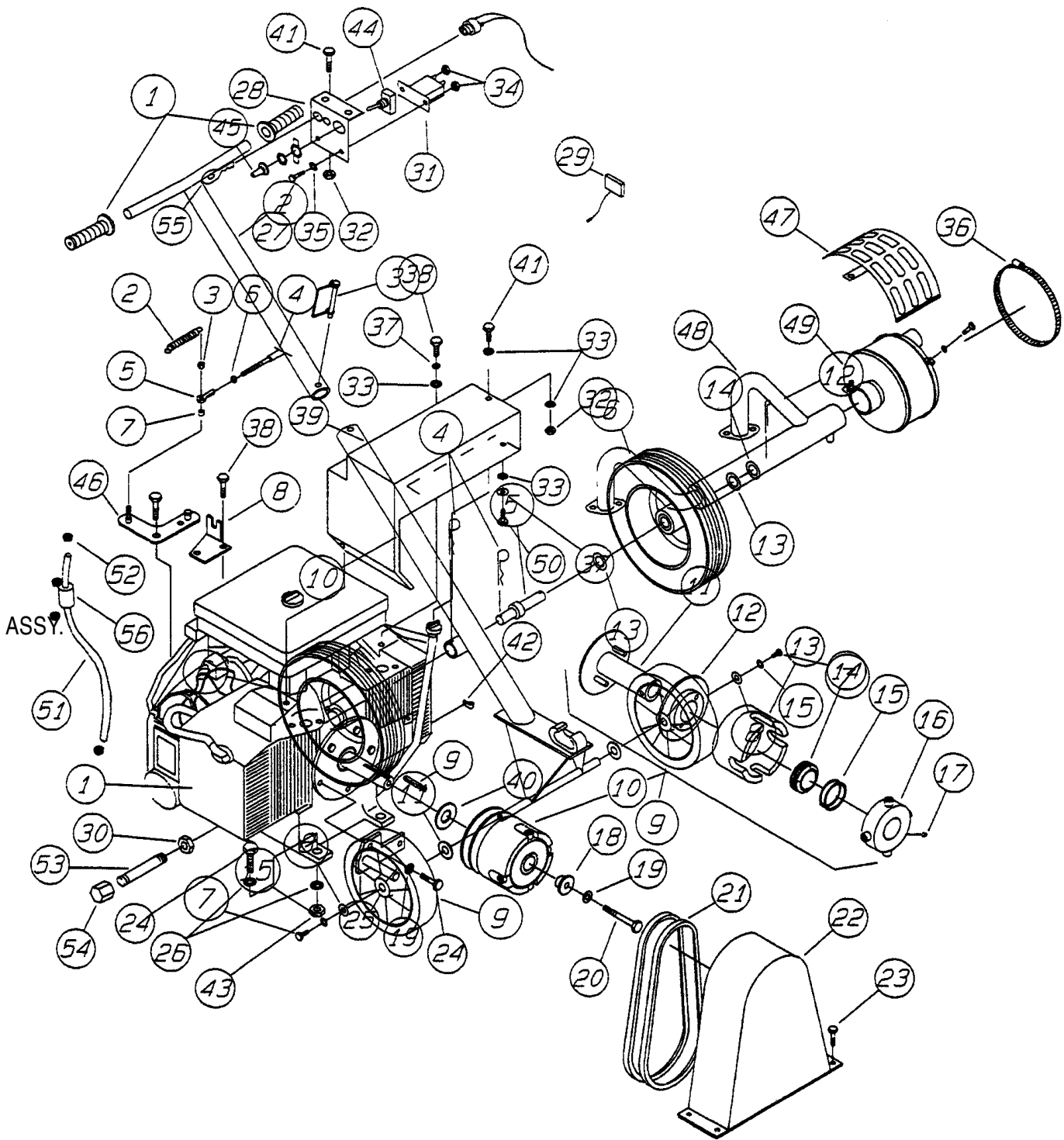
# HRT RIDE-ON POWER TROWEL — ONAN ENGINE & CLUTCH ASSY.

## ONAN ENGINE & CLUTCH ASSY.

<u>NO.</u>	<u>PART NO.</u>	<u>PART NAME</u>	<u>QTY.</u>	<u>REMARKS</u>
1		ENGINE 24 HP ONAN	1	
2	2192	THROTTLE SPRING	1	
3	2194	THROTTLE NUT	1	
4	2124	THROTTLE CABLE	1	
5	2153	SPHERICAL BEARING	1	
6	0937	HEX NUT 10- 32	1	
7	2190	SPACER	1	
8	2628	THROTTLE CABLE MOUNTING BRACKET	1	
9	4024	SQUARE KEY 1/4 X 1/4 X 2.3/4"	1	
10	2719	5" CLUTCH ASM. 1.1/8" BORE .....	1	TO ME35186
10	10720	5" CLUTCH ASM. 1. 1/8" BORE .....	1	FROM ME35187
11	2290	CLUTCH SPINDLE 1.1/8" BORE	1	
12	1975	CLUTCH PULLEY	1	
13	2519	CLUTCH BOWL	1	
14	2941	CLUTCH WEIGHT SET	1	
15	2473	WEIGHT SPRING	2	
16	2897	CLUTCH PLATE ( WITH ROLLERS)	1	
17	2070	SHSS 3/8- 24 X 1"	2	
18	2951	CLUTCH RETAINER	1	
19	0166A	LOCK WASHER 3/8"	3	
20	8135	HHCS 3/8- 24 X 3"	1	
21	11048	BELT (B- 39) .....	2	FROM LG40711
21	2413	BELT (B- 42) .....	2	TO LG40710
22	2333	BELT GUARD .....	1	TO NJ32685
22	2547	BELT GUARD .....	1	FROM NJ32686
23	1273	HHSTS 8- 32 X 3/8"	4	
24	1284	HHCS 3/8- 16 X 1.1/2"	6	
25	2631	BELT GUIDE	1	

# HRT RIDE-ON POWER TROWEL — ONAN ENGINE & CLUTCH ASSY.

ONAN ENGINE & CLUTCH ASSY.



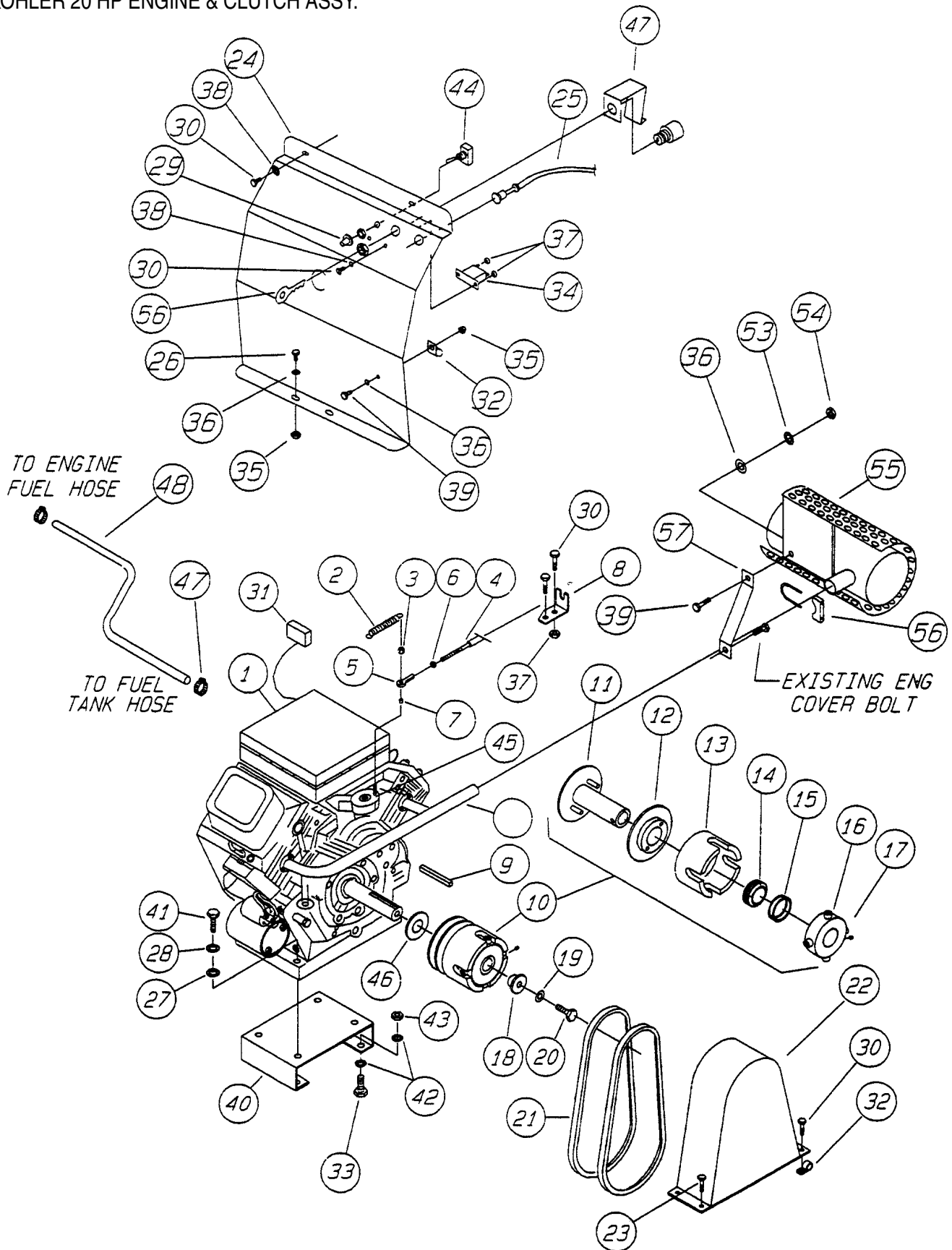
# HRT RIDE-ON POWER TROWEL — ONAN ENGINE & CLUTCH ASSY.

## ONAN ENGINE & CLUTCH ASSY.

<u>NO.</u>	<u>PART NO.</u>	<u>PART NAME</u>	<u>QTY.</u>	<u>REMARKS</u>
26	0300B	FLAT WASHER 5/16"	8	
27	5065B	RHMS 10- 32 X 1/2"	2	
28	2643	CONTROL PANEL	1	
29	2655	HOUR METER	1	
30	10490	LOCK NUT 3/8- NPT .....	1 .....	FROM MD 34449
31	2673	CIRCUIT BREAKER	1	
32	10024	LOCK NUT 10- 24	3	
33	0948	FLAT WASHER 1/4"	6	
34	10019	LOCK NUT 10- 32	4	
35	2203	FLAT WASHER #10	2	
36	10463	HOSE CLAMP	1	
37	0181B	LOCK WASHER 1/4"	4	
38	4514	HHCS 1/4- 24 X 5/8"	4	
39	10524	HEAT SHIELD	1	
40	2629	CLUTCH SPACER	1	
41	0730	HHCS 1/4- 20 X 1"	3	
42	2548	WIRE CLAMP	1	
43	10133	LOCK NUT 3/8- 16	4	
44	4682	SWITCH	1	
45	8381	BOOT	1	
46	2694	THROTTLE CONTROL BRACKET	1	
47	10317	MUFFLER SHIELD	1	
48	10526	EXHAUST HEADER	1	
49	10208	MUFFLER W/CLAMP	1	
50	1579	HHCS 1/4- 20 X 1/2"	1	
51	10569	FUEL HOSE	1	
52	19473	HOSE CLAMP	2	
53	10489	NIPPLE .....	1 .....	FROM MD34449
54	10491	CAP 3/8- NPT .....	1 .....	FROM MD34449
55	11078	IGNITION KEY	1	
56	2346	FUEL FILTER		

# HRT RIDE-ON POWER TROWEL — KOHLER 20 HP ENGINE & CLUTCH ASSY.

KOHLER 20 HP ENGINE & CLUTCH ASSY.



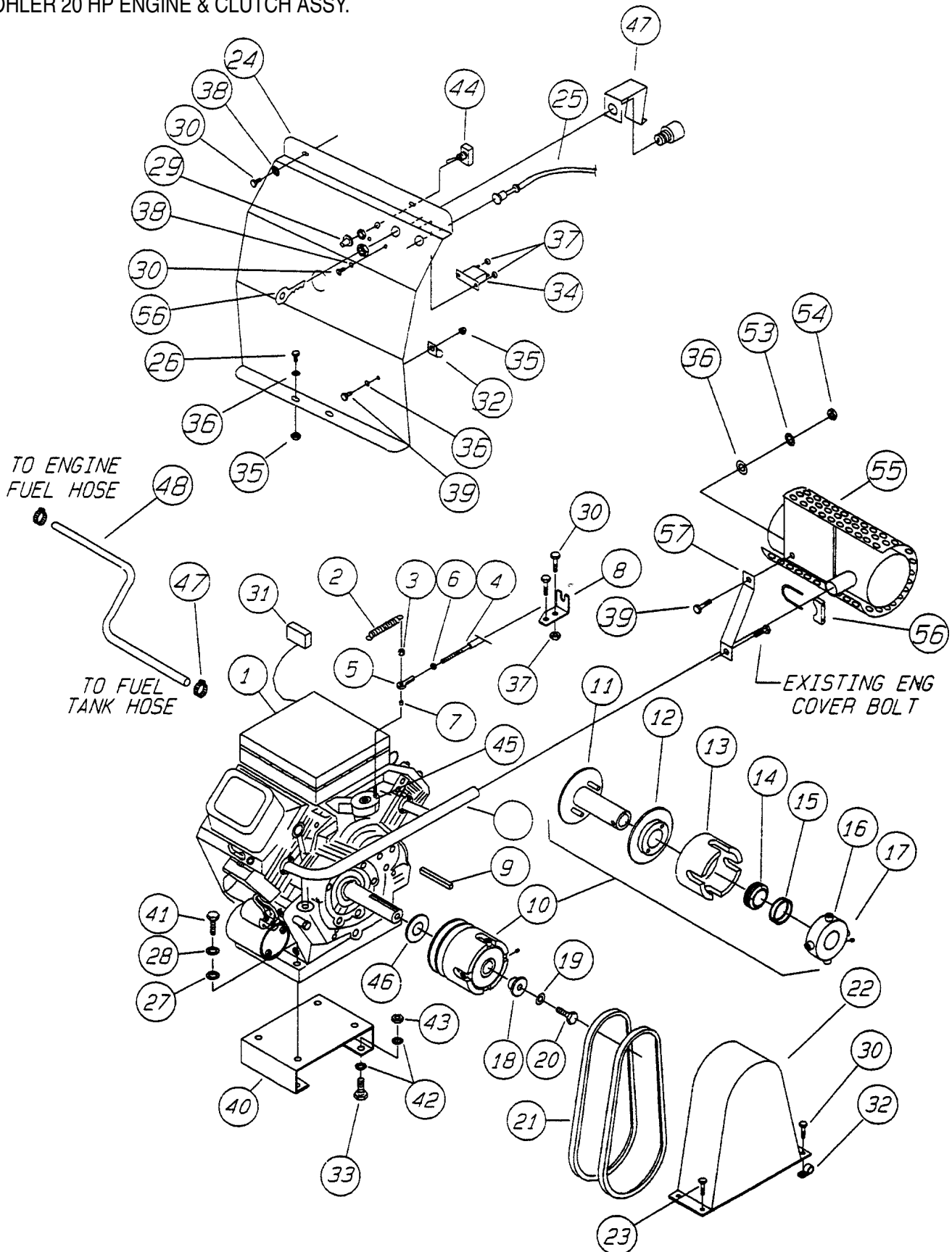
# HRT RIDE-ON POWER TROWEL — KOHLER 20 HP ENGINE & CLUTCH ASSY.

## KOHLER 20 HP ENGINE & CLUTCH ASSY.

<u>NO.</u>	<u>PART NO.</u>	<u>PART NAME</u>	<u>QTY.</u>	<u>REMARKS</u>
1		ENGINE 20 HP KOHLER	1	
2	2192	THROTTLE SPRING	1	
3	2194	THROTTLE NUT	1	
4	2124	THROTTLE CABLE	1	
5	2153	SPHERICAL BEARING	1	
6	0937	HEX NUT 10- 32	1	
7	2190	SPACER	1	
8	2884	THROTTLE CABLE MOUNTING BRACKET	1	
9	0310	SQUARE KEY 1/4 X 1/4 X 1.1/2"	1	
10	2719	5" CLUTCH ASM. 1.1/8" BORE .....	1	TO ME35186
10	10720	5" CLUTCH ASM. 1.1/8" BORE .....	1	FROM ME35187
11	10719	CLUTCH SPINDLE 1.1/8" BORE	1	
12	1975	CLUTCH PULLEY	1	
13	2519	CLUTCH BOWL	1	
14	2941	CLUTCH WEIGHT SET	1	
15	2473	WEIGHT SPRING	2	
16	10727	CLUTCH PLATE (WITH ROLLERS)	1	
17	2070	SHSS 3/8- 24 X 1"	2	
18	2951	CLUTCH RETAINER	1	
19	2955	LOCK WASHER 7/16"	1	
20	2956	HHCS 7/16- 20 X 1.1/2"	1	
21	2422	BELT (B- 41)	2	
22	2333	BELT GUARD .....	1	TO NJ32685
22	2547	BELT GUARD .....	1	FROM NJ32686
23	1273	HHSTS 8- 32 X 3/8"	2	
24	10378	CONTROL PANEL	1	
25	2580	CHOKE CABLE	1	
26	4514	HHCS 1/4- 20 X 5/8"	2	
27	0300B	FLAT WASHER 5/16"	4	
28	0161C	LOCK WASHER 5/16"	4	
29	8381	BOOT	1	
30	5065B	RHMS 10- 32 X 1/2"	8	

# HRT RIDE-ON POWER TROWEL — KOHLER 20 HP ENGINE & CLUTCH ASSY.

## KOHLER 20 HP ENGINE & CLUTCH ASSY.



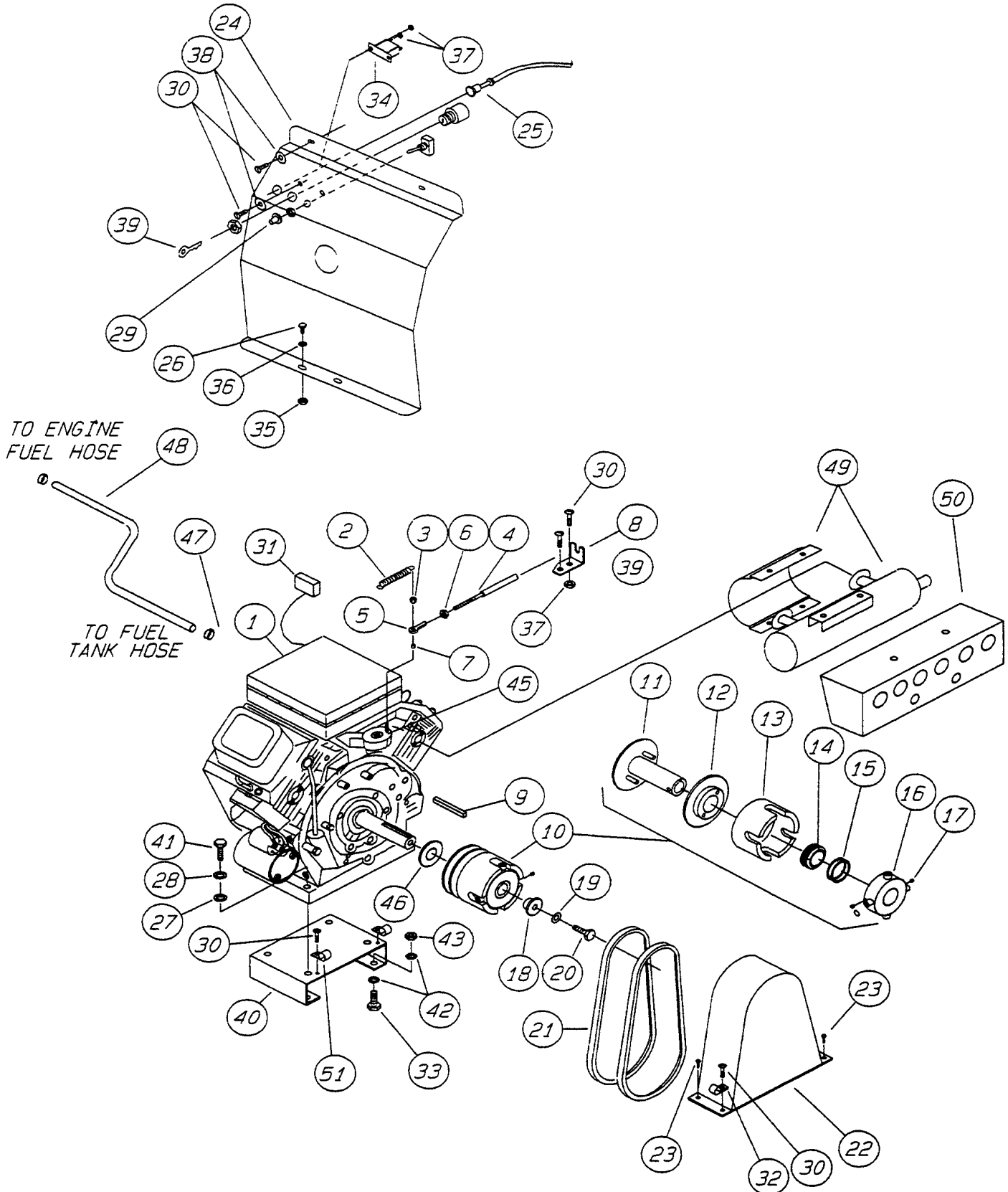
## HRT RIDE-ON POWERTROWEL — KOHLER 20 HP ENGINE & CLUTCH ASSY.

### KOHLER 20 HP ENGINE & CLUTCH ASSY.

<u>NO.</u>	<u>PART NO.</u>	<u>PART NAME</u>	<u>QTY.</u>	<u>REMARKS</u>
31	2655	HOUR METER	1	
32	8126	HOSE CLAMP	2	
33	0205	HHCS 3/8- 16 X 1"	4	
34	2673	CIRCUIT BREAKER	1	
35	10024	LOCK NUT 1/4- 20	3	
36	0948	FLAT WASHER 1/4"	4	
37	10019	LOCK NUT 10- 32	6	
38	2203	FLAT WASHER #10	4	
39	0131A	HHCS 1/4- 20 X 3/4"	1	
40	10381	ENGINE ADAPTER	1	
41	0105	HHCS 5/16- 18 X 1.1/2"	4	
42	10136	FLAT WASHER 3/8"	8	
43	10133	LOCK NUT 3/8- 16	4	
44	4682	SWITCH	1	
45	10018	SHCS 10- 32 X 1"	1	
46	2629	CLUTCH SPACER	1	
47	2138	HOSE CLAMP	2	
48	10691	FUEL HOSE	1	
49	10839	IGNITION SWITCH SHIELD	1	
50	0181B	LOCK WASHER 1/4"	1	
51	0949	HEX NUT 1/4- 20	1	
52	10853	MUFFLER	1	
53	10855	MUFFLER CLAMP	1	
54	10861	MUFFLER BRACKET	1	
55	10854	MUFFLER MANIFOLD	1	
56	11078	IGNITION KEY	1	

# HRT RIDE-ON POWER TROWEL — KOHLER 25 HP ENG. & CLUTCH ASSY.

KOHLER 25HP ENGINE & CLUTCH ASSY.



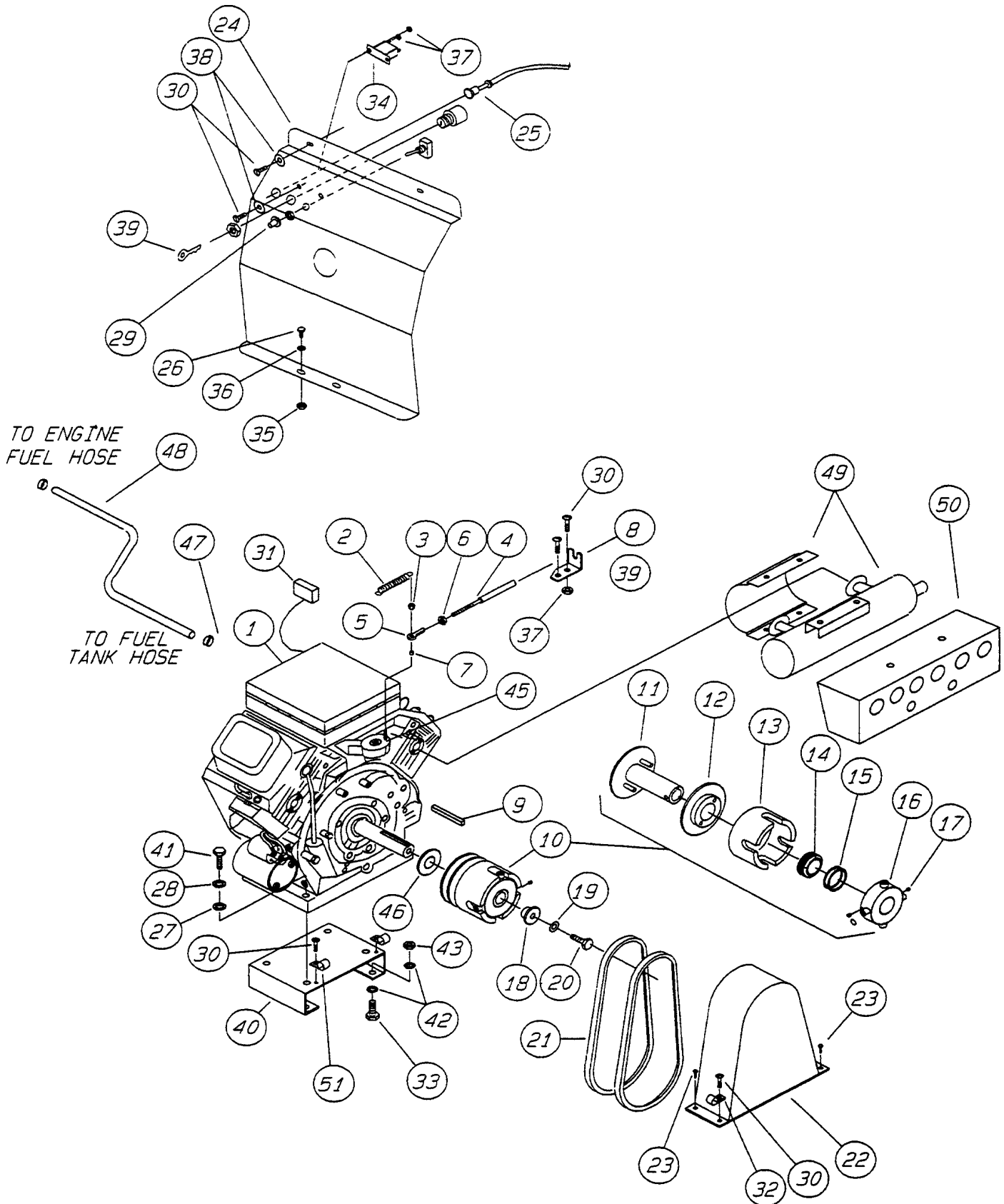
# HRT RIDE-ON POWER TROWEL — KOHLER 25HP ENG. & CLUTCH ASSY.

KOHLER 25HP ENGINE & CLUTCH ASSY.

<u>NO.</u>	<u>PART NO.</u>	<u>PART NAME</u>	<u>QTY.</u>	<u>REMARKS</u>
1		ENGINE 25 HP KOHLER	1	
2	2192	THROTTLE SPRING	1	
3	2194	THROTTLE NUT	1	
4	2124	THROTTLE CABLE	1	
5	2153	SPHERICAL BEARING	1	
6	0937	HEX NUT 10- 32	1	
7	2190	SPACER	1	
8	2884	THROTTLE CABLE MOUNTING BRACKET	1	
9	4024	SQUARE KEY	1	
10	10720	5" CLUTCH ASM. 1.1/8" BORE	1	
11	10719	CLUTCH SPINDLE 1.1/8" BORE	1	
12	1975	CLUTCH PULLEY	1	
13	2519	CLUTCH BOWL	1	
14	2941	CLUTCH WEIGHT SET	1	
15	2473	WEIGHT SPRING	2	
16	10727	CLUTCH PLATE (WITH ROLLERS)	1	
17	2070	SHSS 3/8- 24 X 1"	2	
18	2951	CLUTCH RETAINER	1	
19	2955	LOCK WASHER 7/16"	1	
20	2956	HHCS 7/16- 20 X 1.1/2"	1	
21	11048	BELT (B- 39)	2	
22	2134	BELT GUARD	1	
23	1273	HHSTS 8- 32 X 3/8"	3	
24	11020	CONTROL PANEL	1	
25	2580	CHOKE CABLE	1	
26	4514	HHCS 1/4- 20 X 5/8"	2	
27	0300B	FLAT WASHER 5/16"	4	
28	0161C	LOCK WASHER 5/16"	4	
29	8381	BOOT	1	
30	5065B	RHMS 10- 32 X 1/2"	8	

# HRT RIDE-ON POWER TROWEL — KOHLER 25HP ENG. & CLUTCH ASSY.

KOHLER 25HP ENGINE & CLUTCH ASSY.



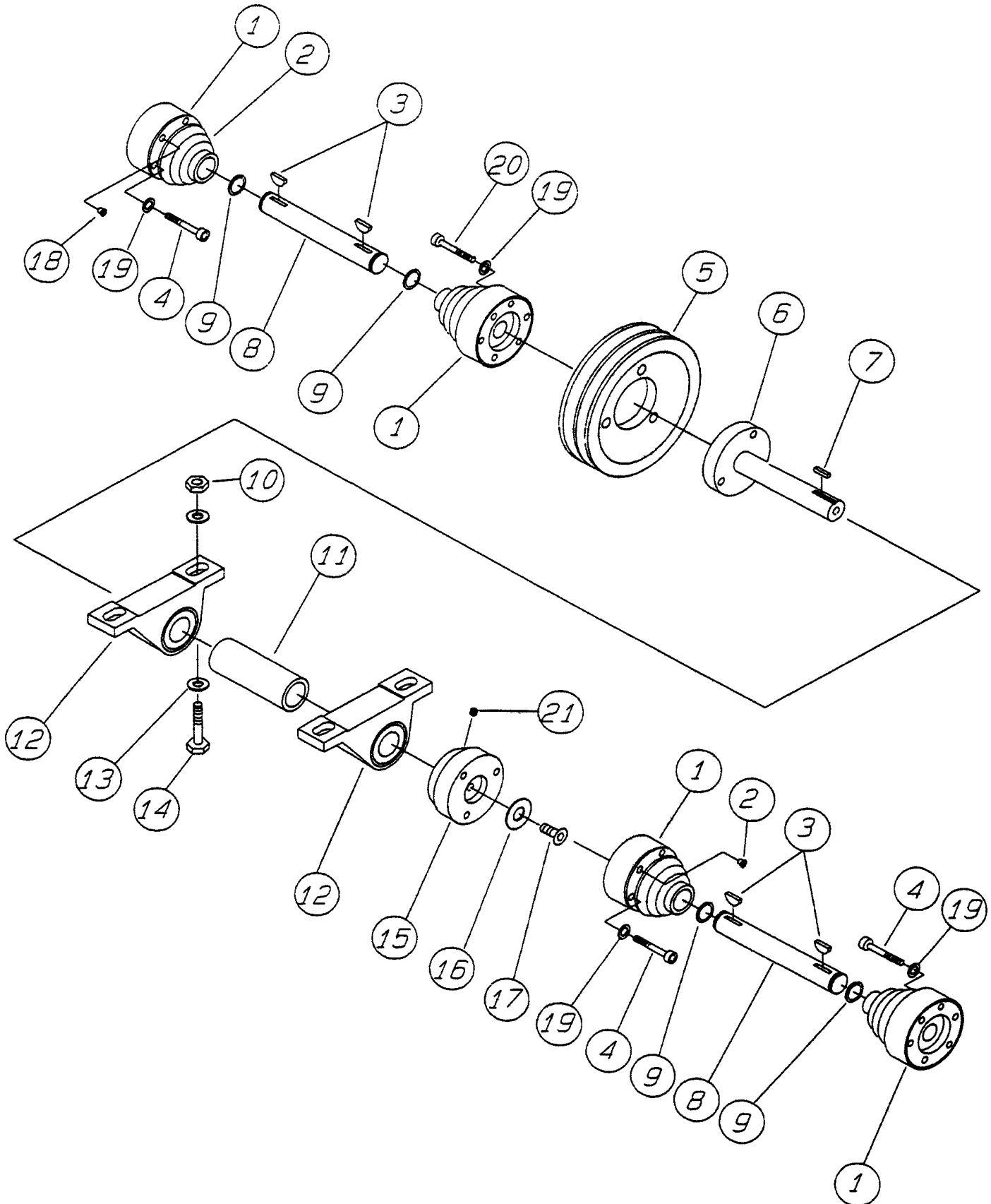
# HRT RIDE-ON POWER TROWEL — KOHLER 25HP ENG. & CLUTCH ASSY.

## KOHLER 25HP ENGINE & CLUTCH ASSY.

<u>NO.</u>	<u>PART NO.</u>	<u>PART NAME</u>	<u>QTY.</u>	<u>REMARKS</u>
31	2655	HOURLMETER	1	
32	8126	HOSE CLAMP	1	
33	0205	HHCS 3/8- 16 X 1"	4	
34	2673	CIRCUIT BREAKER	1	
35	10024	LOCK NUT 1/4- 20	2	
36	0948	FLAT WASHER 1/4"	2	
37	10019	LOCK NUT 10- 32	6	
38	2203	FLAT WASHER #10	4	
39	11078	IGNITION KEY	1	
40	10381	ENGINE ADAPTER	1	
41	0105	HHCS 5/16- 18 X 1.1/2"	4	
42	10136	FLAT WASHER 3/8"	8	
43	10133	LOCK NUT 3/8- 16	4	
44	4682	SWITCH	1	
45	10018	SHCS 10- 32 X 1"	1	
46	11094	CLUTCH SPACER	1	
47	19473	HOSE CLAMP	4	
48	10691	FUEL HOSE	1	
49	11031	MUFFLER KIT	1	
50	11037	MUFFLER SHIELD	1	
51	8128	HOSE CLAMP	2	

# HRT RIDE-ON POWER TROWEL — DRIVE ASSY.

DRIVE ASSY.



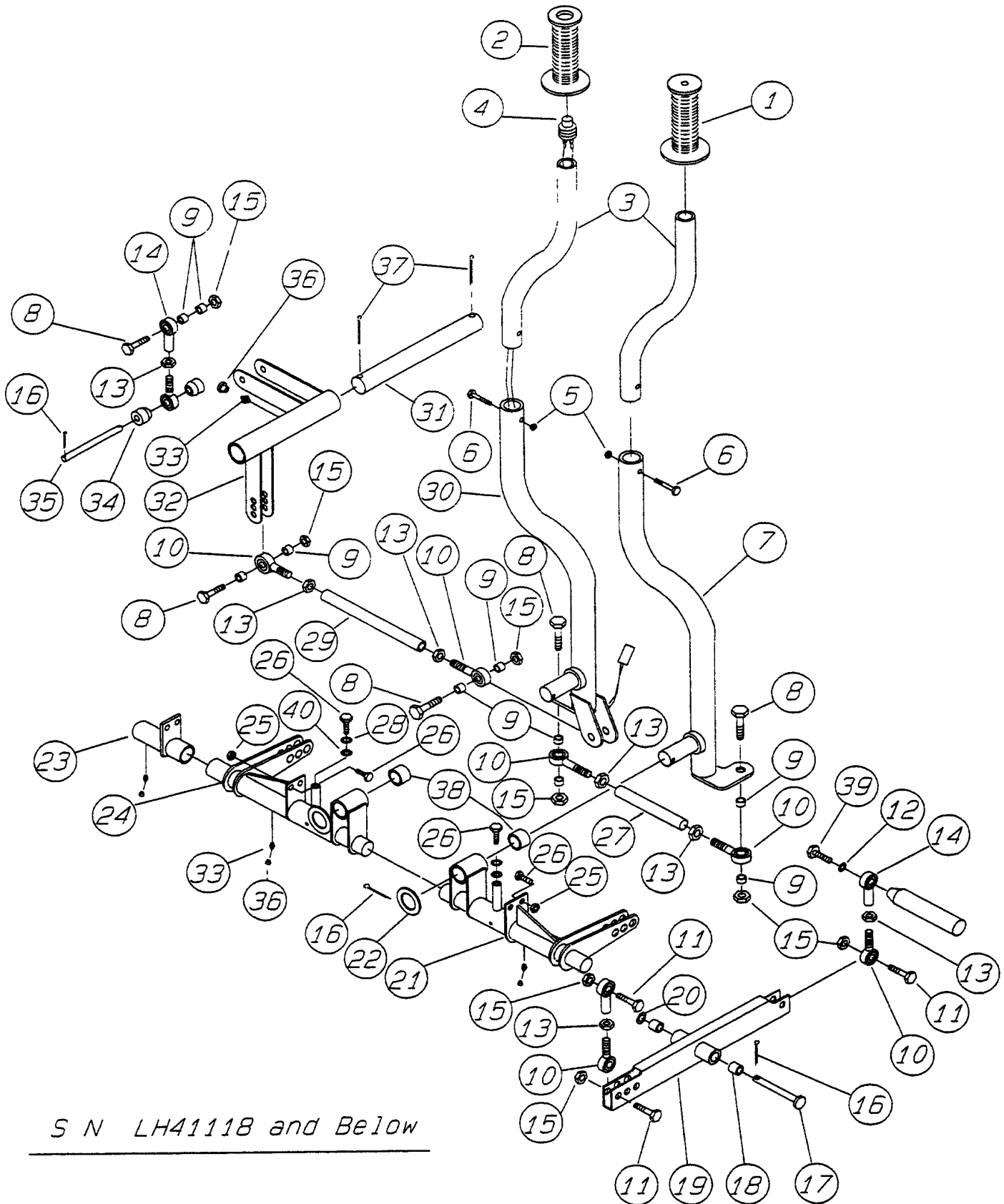
# HRT RIDE-ON POWER TROWEL — DRIVE ASSY.

DRIVE ASSY.

<u>NO.</u>	<u>PART NO.</u>	<u>PART NAME</u>	<u>QTY.</u>	<u>REMARKS</u>
1	2052	C.V. JOINT	4	
2	2259	C. V. JOINT BOOT (REPLACEMENT ONLY)		
3	0126	WOODRUFF KEY #9	4	
4	2186	SHCS 5/16-18 X 2.1/4"	3	
5	2054	PULLEY .....	1	TO LG40710
5	11028	PULLEY .....	1	FROM LG40711
6	2129	BEARING SHAFT	1	
7	2126	SQUARE KEY 3/16 X 3/16 X 3/16"	1	
8	2122	DRIVE SHAFT	1	
9	2090	SNAP RING	4	
10	10133	LOCK NUT 3/8"	4	
11	10514	SPACER	1	
12	10337	PILLOW BLOCK BEARING	2	
13	10136	FLAT WASHER 3/8"	8	
14	1284	HHCS 3/8- 16 X 1.1/2"	4	
15	2029	COUPLER 1" I.D.	1	
16	2037	RETAINING WASHER	1	
17	1146	FHSCS 5/16- 18 X 1"	1	
18	2218	PLUG	12	
19	0161C	FLAT WASHER 5/16"	12	
20	2187	SHCS 5/16- 18 X 2.1/2"	3	
21	10138	SHSS 1/4- 20 X 1/2"	1	

# HRT RIDE-ON POWER TROWEL — STEERING ASSY.

STEERING ASSY.



*S N LH41118 and Below*

# HRT RIDE-ON POWER TROWEL — STEERING ASSY.

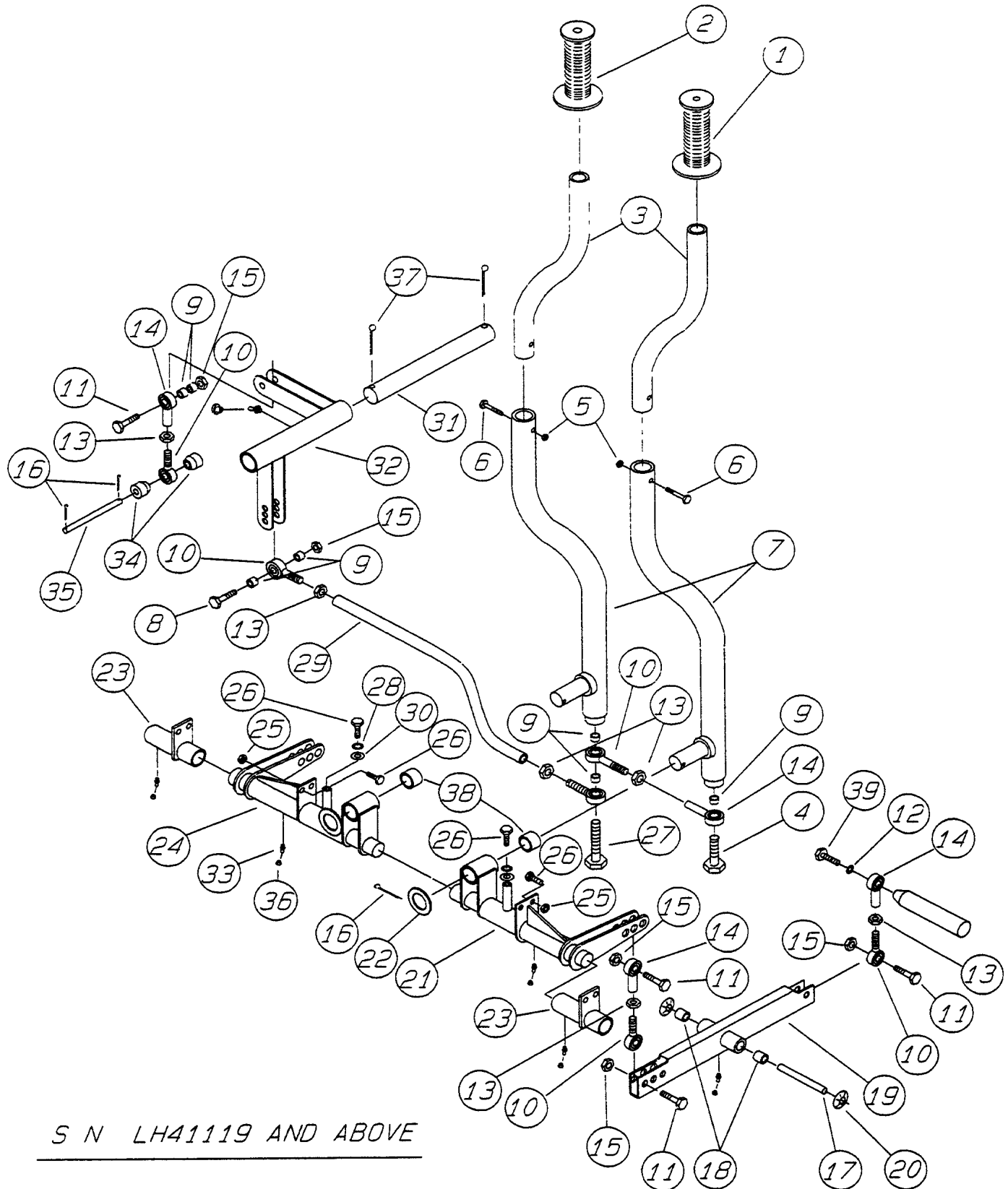
## STEERING ASSY.

<u>NO.</u>	<u>PART NO.</u>	<u>PART NAME</u>	<u>QTY.</u>	<u>REMARKS</u>
1	0189	LEFT SIDE HAND GRIP .....	1 .....	NO OPTIONS
1	2267	LEFT SIDE HAND GRIP .....	1 .....	RETARDANT SPRAY OPT.
2	2267	RIGHT SIDE HAND GRIP	1	
3	10130	HANDLE EXTENSIONS	2	
4	2766	KILL BUTTON	1	
5	2197	ACORN NUT 1/4- 20	2	
6	0424	HHCS 1/4- 20 X 1.1/4"	2	
7	10131	LEFT HANDLE	1	
8	9154	HHCS 3/8- 16 X 1.3/4"	5	
9	2196	SPACER	10	
10	2063	SPHERICAL BEARING .....	9 .....	RIGHT HAND MALE
11	1023	HHCS 3/8- 16 X 1.1/4"	6	
12	1875	INT. SHKP. WASHER 3/8"	2	
13	2199	JAM NUT 3/8- 24	9	
14	2064	SPHERICAL BEARING .....	7 .....	RIGHT HAND FEMALE
15	10133	LOCK NUT 3/8- 16	11	
16	0183	COTTER PIN 1/8" X 1.1/4"	6	
17	2097	CLEVIS PIN 3/8" X 2.3/4"	2	
18	1484	BUSHING	4	
19	2891	STEERING CONTROL LEVER	2	
20	10136	FLAT WASHER 3/8"	2	
21	10605	LEFT SIDE STEERING ASM.	1	
22	8151	FLAT WASHER 3/4"	2	
23	10603	BOSS & SUPPORT	2	
24	10606	RIGHT SIDE STEERING ASM.	1	
25	5283	LOCK NUT 5/16- 18	8	
26	0655	HHCS 5/16- 18 X 3/4"	10	
27	2352	CONNECTOR ROD	1	
28	0161C	LOCK WASHER 5/16"	2	
29	2093	LINKAGE ROD	1	
30	10132	RIGHT HANDLE	1	
31	2080	RIGHT/ LEFT MOTION SHAFT	1	
32	2045	RIGHT/ LEFT MOTION ARM .....	1 .....	TO ME34629
32	10718	RIGHT/ LEFT MOTION ARM .....	1 .....	FROM ME34630
33	5228	GREASE FITTING	5	
34	2188	SPACER	2	
35	2193	ADAPTER PLATE PIN	1	
36	1162A	LUBRA- CAP	5	
37	2219	COTTER PIN 1/8" X 1.1/2"	2	
38	2168	BUSHING	4	
39	10207	BHCS 3/8- 16 X 1.1/4"	2	
40	0300B	FLAT WASHER 5/16"	2	

S. N. LH41118 AND BELOW

# HRT RIDE-ON POWER TROWEL — STEERING ASSY.

STEERING ASSY.



S N LH41119 AND ABOVE

# HRT RIDE-ON POWER TROWEL — STEERING ASSY.

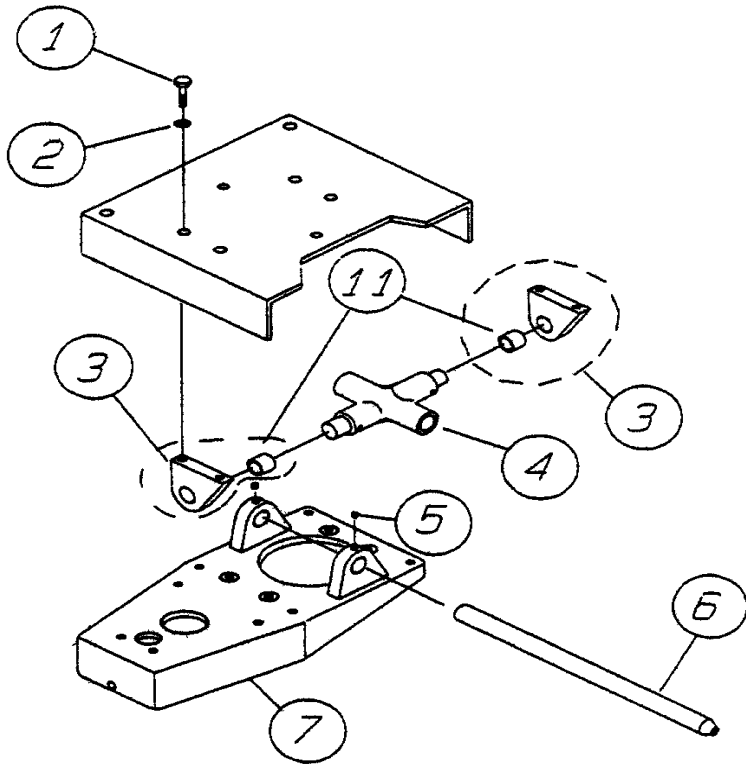
## STEERING ASSY.

<u>NO.</u>	<u>PART NO.</u>	<u>PART NAME</u>	<u>QTY.</u>	<u>REMARKS</u>
1	0189	LEFT SIDE HAND GRIP .....	1 .....	NO OPTIONS
1	2267	LEFT SIDE HAND GRIP .....	1 .....	RETARDANT SPRAY OPT.
2	0189	RIGHT SIDE HAND GRIP	1	
3	10130	HANDLE EXTENSIONS	2	
4	11090	SHCS 3/8- 16 X 1.1/4"	1	
5	2197	ACORN NUT 1/4- 20	2	
6	0424	HHCS 1/4- 20 X 1.1/4"	2	
7	11079	LOWER HANDLE	2	
8	1665	HHCS 3/8- 16 X 2"	2	
9	2196	SPACER	7	
10	2063	SPHERICAL BEARING .....	8 .....	RIGHT HAND MALE
11	1284	HHCS 3/8- 16 X 1.1/2"	6	
12	1875	INT. SHKP. WASHER 3/8"	2	
13	2199	JAM NUT 3/8- 24	8	
14	2064	SPHERICAL BEARING .....	6 .....	RIGHT HAND FEMALE
15	10133	LOCK NUT 3/8- 16	8	
16	0183	COTTER PIN	4	
17	11073	PIN	2	
18	11072	BEARING	4	
19	11071	STEERING CONTROL LEVER	2	
20	11082	CAP	4	
21	10605	LEFT SIDE STEERING ASM.	1	
22	8151	FLAT WASHER 3/4"	2	
23	10603	BOSS & SUPPORT	2	
24	10606	RIGHT SIDE STEERING ASM.	1	
25	5283	LOCK NUT 5/16- 18	8	
26	0655	HHCS 5/16- 18 X 3/4"	10	
27	11089	SHCS 3/8- 16 X 1.3/4"	1	
28	0161C	LOCK WASHER 5/16"	2	
29	11087	LINKAGE ROD	1	
30	0300B	FLAT WASHER 5/16"	2	
31	2080	RIGHT/ LEFT MOTION SHAFT	1	
32	10718	RIGHT/ LEFT MOTION ARM	1	
33	5228	GREASE FITTING	7	
34	2188	SPACER	2	
35	2193	ADAPTER PLATE PIN	1	
36	1162A	LUBRA- CAP	5	
37	2219	COTTER PIN	2	
38	2168	BUSHING	4	
39	10207	BHCS 3/8- 16 X 1.1/4"	2	

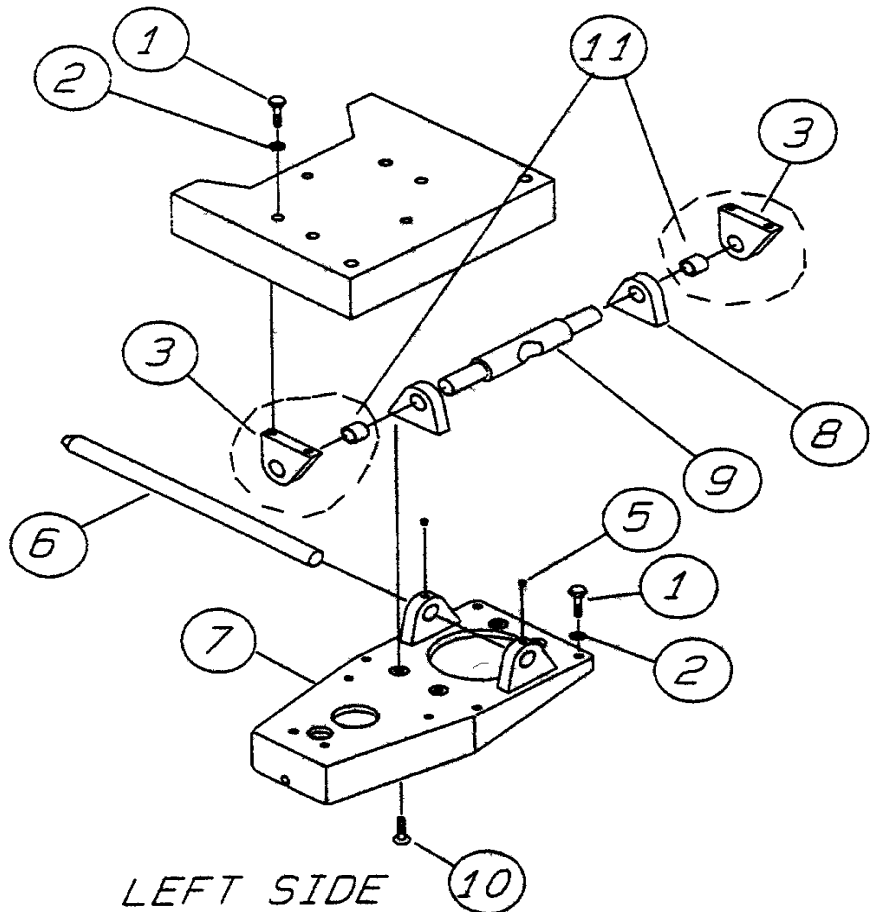
S. N. LH41119 AND ABOVE

# HRT RIDE-ON POWER TROWEL — GEARBOX ADAPTER PLATES ASSY.

## GEARBOX ADAPTER PLATES ASSY.



*RIGHT SIDE*



*LEFT SIDE*

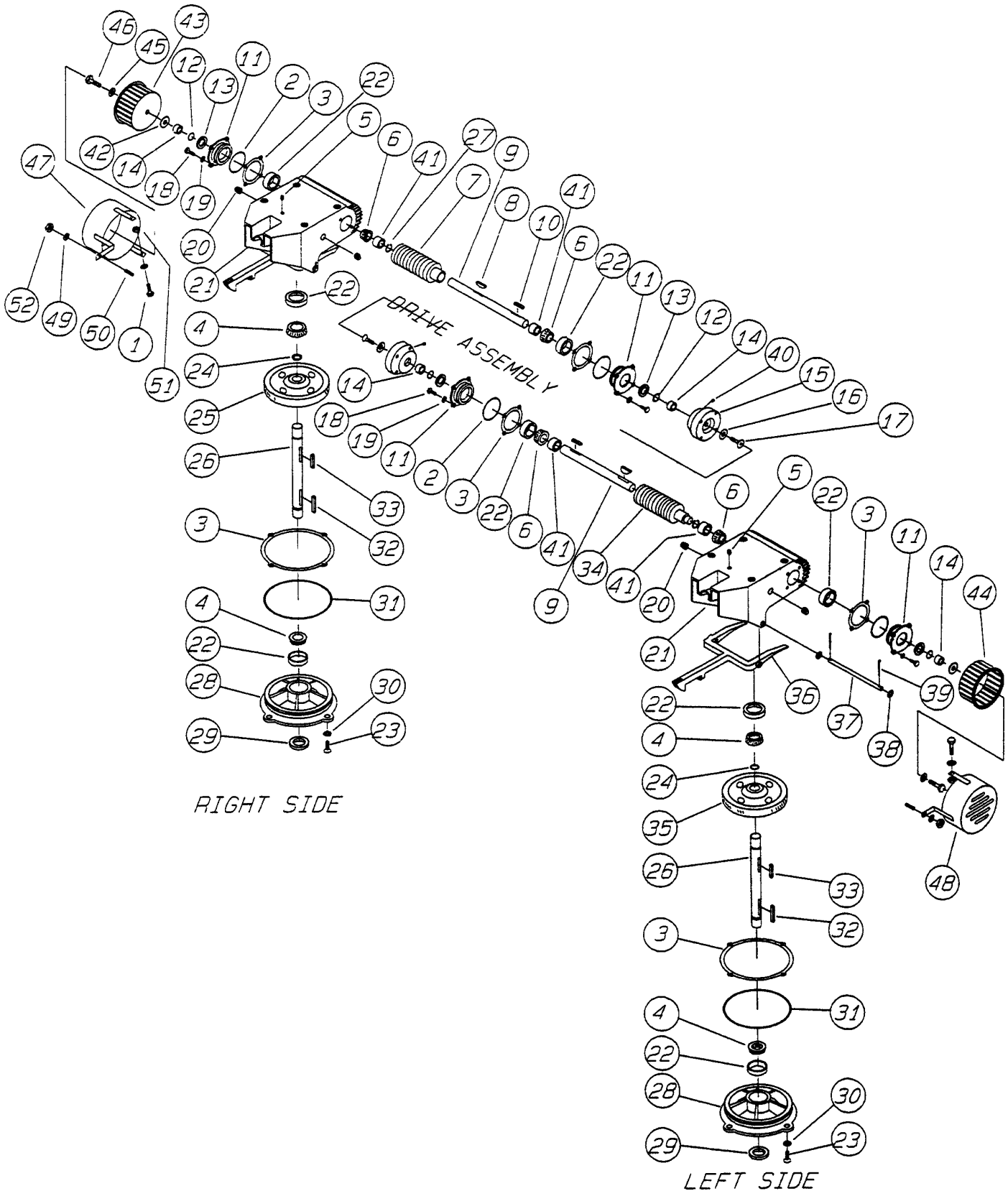
# HRT RIDE-ON POWER TROWEL — GEARBOX ADAPTER PLATES ASSY.

## GEARBOX ADAPTER PLATES ASSY.

<u>NO.</u>	<u>PART NO.</u>	<u>PART NAME</u>	<u>QTY.</u>	<u>REMARKS</u>
1	1023	HHCS 3/8- 16 X 1.1/4"	16	
2	0166A	LOCK WASHER 3/8"	16	
3	2304	ROCKER BLOCK ASM. ....	4	INCLUDING ITEM 11
4	2146	PIVOT ARM	1	
5	10138	SHSS 1/4- 20 X 1/2"	4	
6	2268	CONTROL PIVOT ARM	2	
7	1992	ADAPTER PLATE	2	
8	2312	ROCKER BLOCK	2	
9	2145	PIVOT SHAFT	2	
10	1394	FHSCS 3/8- 16 X 1"	4	
11	2088	BUSHING .....	4	AFTER PRESSING BUSHING ..... INTO ROCKER BLOCK, REAM ..... TO .752 )

# HRT RIDE-ON POWER TROWEL — GEARBOX ASSY.

GEARBOX ASSY.



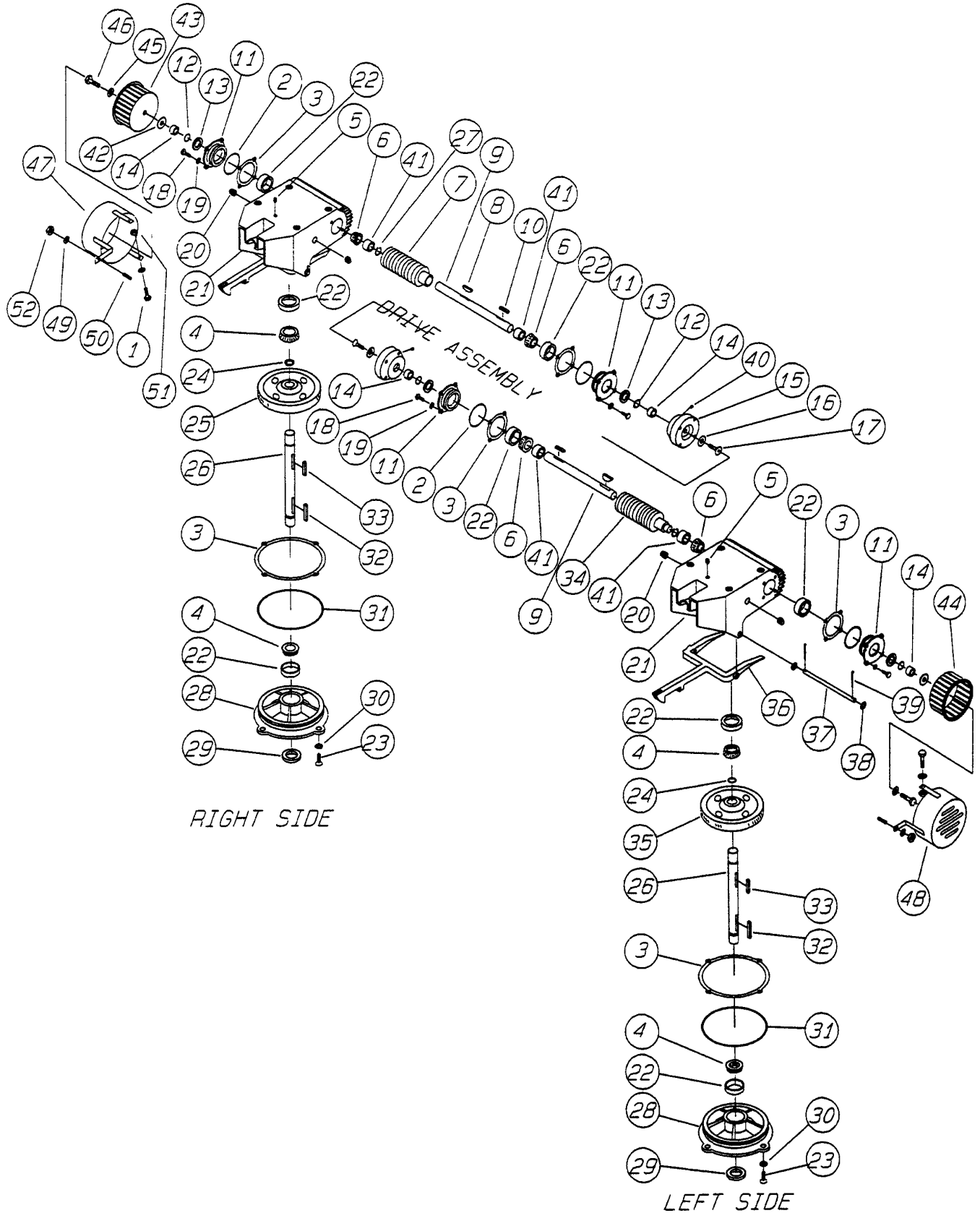
# HRT RIDE-ON POWER TROWEL — GEARBOX ASSY.

GEARBOX ASSY.

<u>NO.</u>	<u>PART NO.</u>	<u>PART NAME</u>	<u>QTY.</u>	<u>REMARKS</u>
1	5065B	RHMS 10- 32 X 1/2"	4	
2	2309	O- RING .....	4	INCLUDED IN ITEM 3
3	2618	GASKET KIT		
4	0232	BEARING CONE	4	
5	1132	AIR VENT	2	
6	9045	BEARING CONE	4	
7	9032	RIGHT SIDE WORM	1	
8	1139	WOODRUFF KEY #21	2	
9	2094	COUNTERSHAFT .....	2	TO LC38744
9	10913	COUNTERSHAFT .....	2	FROM LC38745
10	2323	SQUARE KEY 1/4 X 1/4 X 15/16"	2	
11	2307	FLANGE	4	
12	2116	O- RING	4	
13	9044	OIL SEAL .....	4	INCLUDED IN ITEM 3
14	9043	SPACER	4	
15	2048	COUPLER	2	
16	9120	RETAINING WASHER	2	
17	1313	FHSCS 3/8- 24 X 3/4"	2	
18	2295	HHCS 1/4-20 X 7/8"	16	
19	0133W	COPPER WASHER 1/4"	16	
20	0121A	PLUG	6	
21	2228	GEARBOX .....	2	TO LC38744
21	10776	GEARBOX .....	2	FROM LC38745
22	0232A	BEARING CUP	8	
23	1146	FHSCS 5/16- 18 X 1" NYLOC	8	
24	1138	RETAINING RING	2	
25	9181	RIGHT SIDE WORM GEAR	1	
26	9179	MAINSHAFT	2	
27	9049	RETAINING RING	2	
28	9036	COVER PLATE	2	
29	9041	SEAL .....	2	INCLUDED IN ITEM 3
30	10235	INT. LOCK WASHER 5/16"	8	

# HRT RIDE-ON POWER TROWEL — GEARBOX ASSY.

## GEARBOX ASSY.



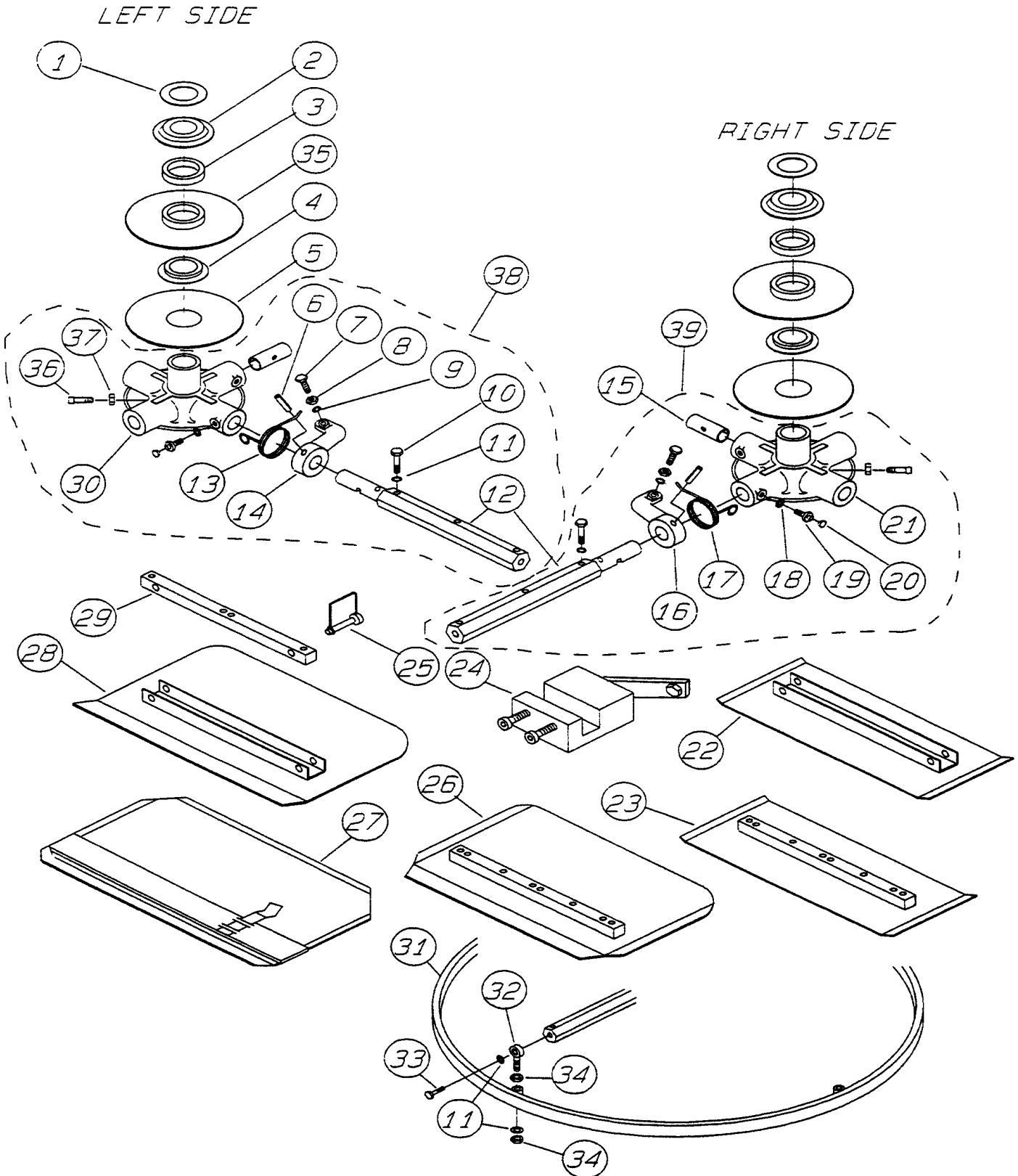
# HRT RIDE-ON POWER TROWEL — GEARBOX ASSY.

GEARBOX ASSY.

<u>NO.</u>	<u>PART NO.</u>	<u>PART NAME</u>	<u>QTY.</u>	<u>REMARKS</u>
31	9038	O- RING .....	2 .....	INCLUDED IN ITEM 3
32	9183	SQUARE KEY 5/16 X 5/16 X 3"	2	
33	9180	SQUARE KEY 5/16 X 5/16 X 2.1/4"	2	
34	1993	LEFT SIDE WORM	1	
35	2001	LEFT SIDE WORM GEAR (BRONZE)	1	
36	9027	YOKE ARM	2	
37	9028	YOKE PIN	2	
38	10136	FLAT WASHER 3/8"	8	
39	0683	COTTER PIN 3/32" X 3/4"	2	
40	10138	SHSS 1/4- 20 X 1/2"	2	
41	9042	SPACER	4	
42	10930	FENDER WASHER 1/4"	2	
43	10921	FAN (CW)	1	
44	10922	FAN (CCW)	1	
45	0948	FLAT WASHER 1/4"	2	
46	0424	HHCS 1/4- 20 X 1.1/4"	2	
47	10894	RIGHT SIDE FAN COVER	1	
48	10893	LEFT SIDE FAN COVER	1	
49	2203	WASHER #10	6	
50	10989	STUD 10- 32	2	
51	0937	HEX NUT 10- 32	2	
52	10019	LOCK NUT 10- 32	2	
	2619	BEARING REPLACEMENT KIT .....		NOT SHOWN
	10950	RIGHT SIDE GEARBOX ASM.		
	10951	LEFT SIDE GEARBOX ASM.		

# HRT RIDE-ON POWER TROWEL — SPIDER & BLADES ASSY.

SPIDER & BLADES ASSY.



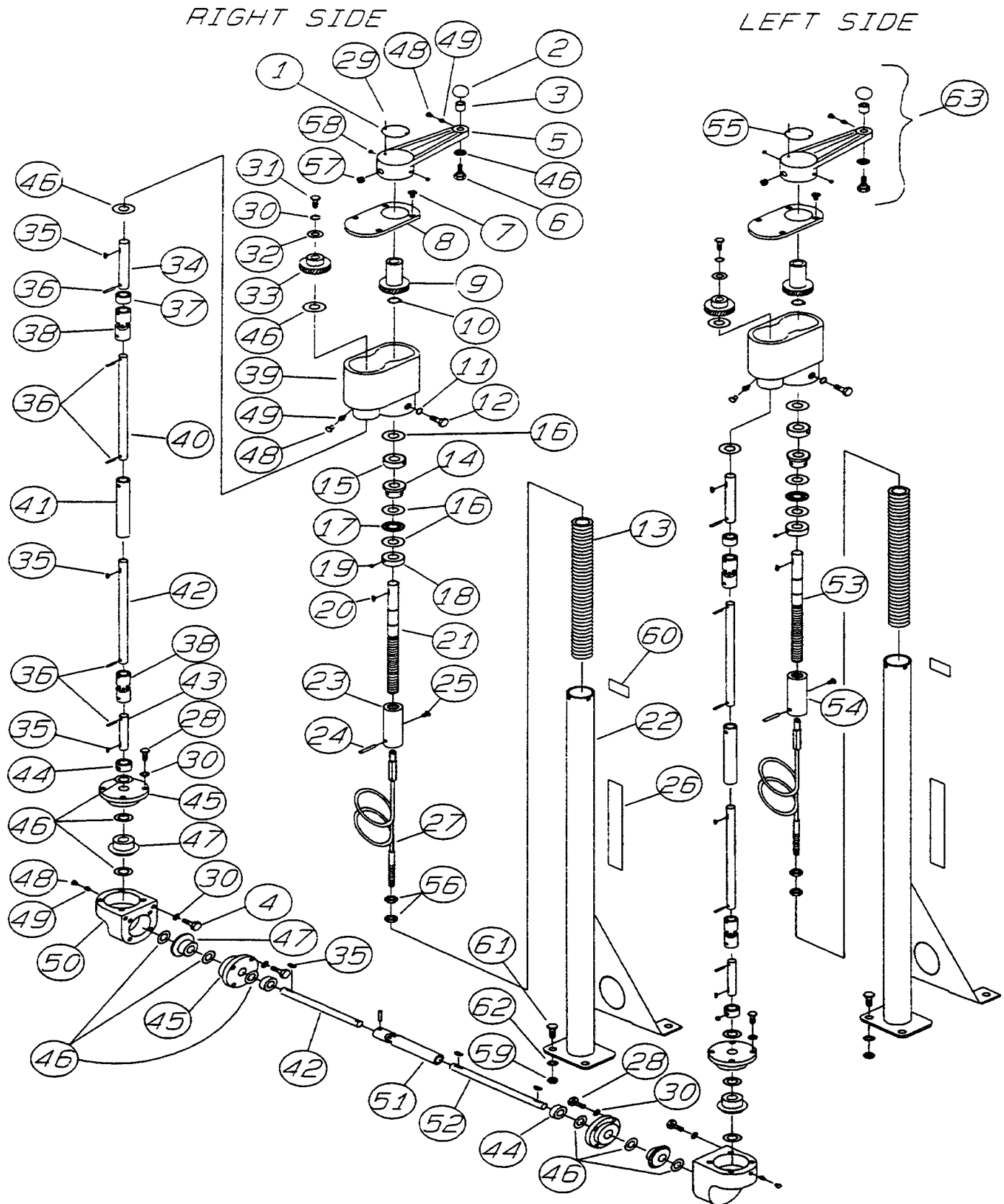
# HRT RIDE-ON POWER TROWEL — SPIDER & BLADES ASSY.

## SPIDER & BLADES ASSY.

<u>NO.</u>	<u>PART NO.</u>	<u>PART NAME</u>	<u>QTY.</u>	<u>REMARKS</u>
1	1803	WEAR PLATE	2	
2	1152	THRUST COLLAR CAP	2	
3	1153	THRUST BEARING	2	
4	1471	THRUST COLLAR BUSHING	2	
5	9009	WEAR PLATE	2	
6	9006	ROLL PIN	8	
7	0164B	GGCS 3/8- 16 X 1.1/4" FULL THREAD RADIUS HEAD	8	
8	1876	JAM NUT 3/8- 16	8	
9	0166A	LOCK WASHER 3/8"	8	
10	1207	HHCS 5/16- 18 X 1.1/2"	24	
11	0161C	LOCK WASHER 5/16"	32	
12	2829	TROWEL ARM	8	
13	9111	RIGHT HAND SPRING	4	
14	9005	LEFT SIDE TROWEL ARM LEVER	4	
15	9008	BUSHING	8	
16	1986	RIGHT SIDE TROWEL ARM LEVER	8	
17	2143	LEFT HAND SPRING	4	
18	1875	INT. LOCK WASHER 3/8"	8	
19	1322	RETAINING SCREW	8	
20	1162A	LUBRA- CAP	8	
21	2137	RIGHT SIDE SPIDER	1	
22	1874	UNIVERSAL FINISH BLADE .....	8	OPTIONAL
23	0400	FINISH BLADE .....	8	OPTIONAL
24	9177	TROWEL ARM ADJUSTMENT FIXTURE .....	9	OPTIONAL
25	1869	SNAP RING .....	16	OPTIONAL
26	2949	COMBINATION FLOAT & FINISH BLADE	8	
27	444F	CLIP- ON FLOAT BLADE .....	8	OPTIONAL
28	1873	UNIVERSAL FIT COMBINATION BLADE .....	8	OPTIONAL
29	1856	UNIVERSAL FIT MOUNTING BAR .....	8	OPTIONAL
30	9003	LEFT SIDE SPIDER	1	
31	9148	STABILIZER RING	2	
32	1723	ROD END	8	
33	1237	SHCS 5/16- 18 X 7/8"	8	
34	6014C	HEX NUT 5/16- 24	8	
35	9010	THRUST COLLAR .....	2	INCLUDES ITEM 4
36	1167A	SHSS 3/8- 16 X 1.1/2" CONE POINT	2	
37	1456	HEX NUT 3/8- 16	2	
38	9150	LEFT SIDE SPIDER ASM.	1	
39	2271	RIGHT SIDE SPIDER ASM.	1	

# HRT RIDE-ON POWER TROWEL — TWIN PITCH CONTROL ASSY.

TWIN PITCH CONTROL ASSY.



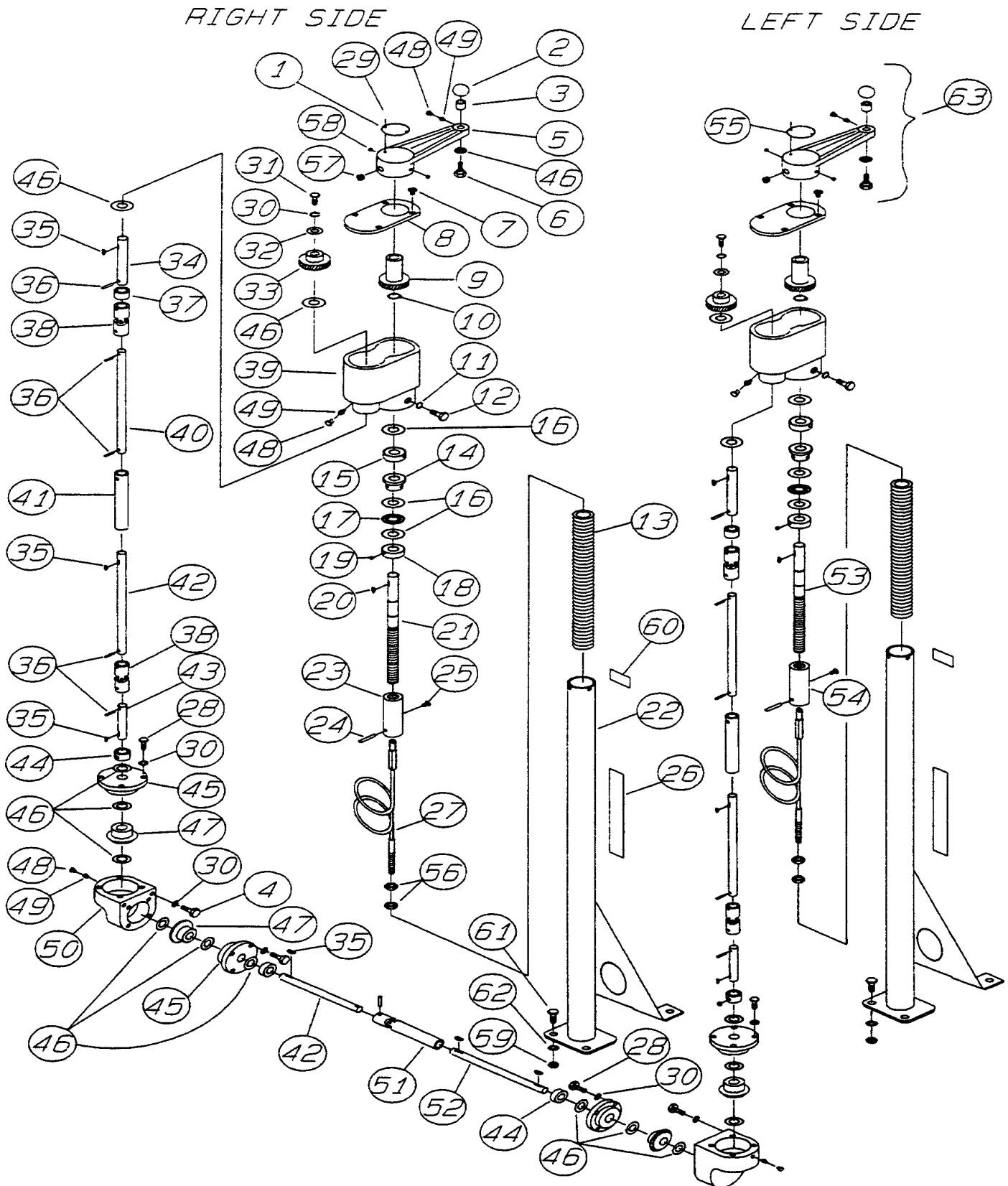
# HRT RIDE-ON POWER TROWEL — TWIN PITCH CONTROL ASSY.

## TWIN PITCH CONTROL ASSY.

<u>NO.</u>	<u>PART NO.</u>	<u>PART NAME</u>	<u>QTY.</u>	<u>REMARKS</u>
1	2300	RIGHT SIDE DECAL	1	
2	4403	CRANK KNOB	2	
3	3231	SPACER	2	
4	4514	HHCS 1/4- 20 X 5/8"	4	
5	1615	CRANK LEVER	2	
6	1616	SHOULDER BOLT	2	
7	2620	BHMS 10- 24 X 5/8"	8	
8	2649	COVER PLATE	2	
9	1529	MASTER GEAR	2	
10	1135	RETAINING RING .....	2	TO MA33523
10	10512	RETAINING RING .....	2	FROM MA33524
11	0161C	LOCK WASHER 5/16"	6	
12	0655	HHCS 5/16- 18 X 3/4"	6	
13	2156	SPRING	2	
14	1612	BEARING	2	
15	1604	BEARING	2	
16	2170	THRUST WASHER	6	
17	2169	THRUST BEARING	2	
18	2367	SET COLLAR	2	
19	0685	SHSS 5/16- 18 X 5/16"	4	
20	0126	WOODRUFF KEY #9	2	
21	10510	RIGHT SIDE PITCH CONTROL SCREW	1	
22	10548	PITCH CONTROL TUBE	2	
23	10383	RIGHT SIDE BLOCK .....	1	TO ME 34629
23	10721	RIGHT SIDE BLOCK .....	1	FROM ME34630
24	1114	ROLL PIN .....	2	TO ME34629
24	10723	ROLL PIN .....	2	FROM ME34630
25	10382	SHOLDER BOLT 3/8 X 3/8"	2	
26	1499	WHITEMAN DECAL	2	
27	2008	CABLE	2	
28	0730	HHCS 1/4- 20 X 1"	16	
29	4014	U- DRIVE SCREW 2 X 3/16"	4	
30	0181B	LOCK WASHER 1/4"	22	
31	1579	HHCS 1/4- 20 X 1/2"	2	
32	0948	FLAT WASHER 1/4"	2	
33	1530	SLAVE GEAR	2	
34	2007	SHAFT	2	
35	1578	WOODRUFF KEY #3	9	
36	1586	ROLL PIN	11	
37	2311	SPACER	2	
38	1536	U- JOINT	4	
39	10546	HOUSING	2	
40	2023	SHAFT	2	

# HRT RIDE-ON POWER TROWEL — TWIN PITCH CONTROL ASSY.

TWIN PITCH CONTROL ASSY.



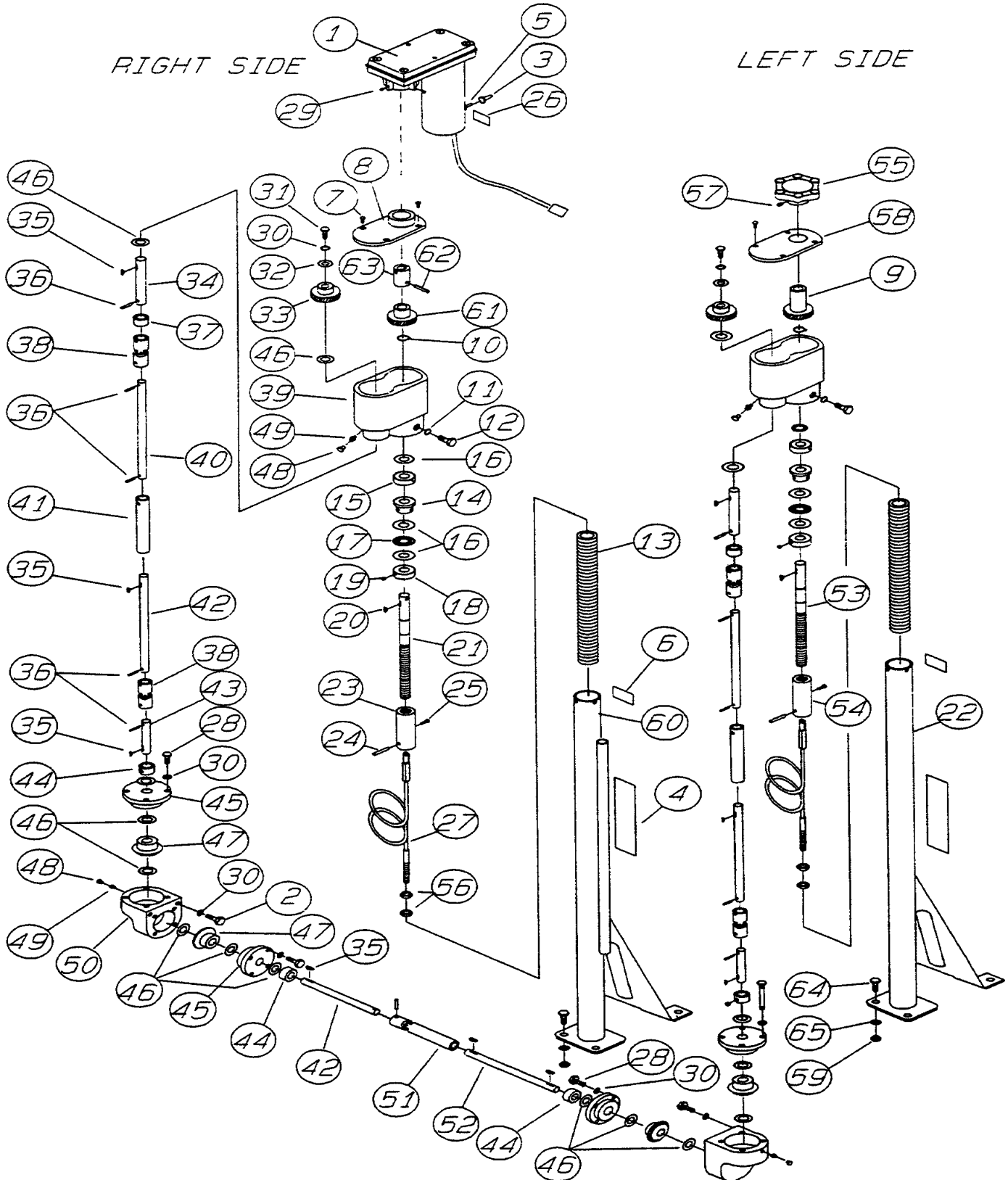
# HRT RIDE-ON POWER TROWEL — TWIN PITCH CONTROL ASSY.

TWIN PITCH CONTROL ASSY.

<u>NO.</u>	<u>PART NO.</u>	<u>PART NAME</u>	<u>QTY.</u>	<u>REMARKS</u>
41	2012	SLEEVE	2	
42	2022	SHAFT	3	
43	2021	SHAFT	2	
44	1577	SET COLLAR	4	
45	1988	MITER BOX CAP	4	
46	1733	HARDENED WASHER	18	
47	2062	MITER GEAR	4	
48	1162A	LUBRA- CAP	6	
49	2621	GREASE FITTING	6	
50	1987	MITER BOX	2	
51	2104	SLEEVE	1	
52	2049	SHAFT	1	
53	10511	LEFT SIDE PITCH CONTROL SCREW	1	
54	10390	LEFT SLIDE BLOCK .....	1	TO ME34629
54	10722	LEFT SLIDE BLOCK .....	1	FROM ME34630
55	2332	LEFT SIDE DECAL	1	
56	1116	BRASS JAM NUT	4	
57	0185	SHSS 3/8- 16 X 3/8"	2	
58	1528	SHSS 1/4- 20 X 5/16"	4	
59	5283	LOCK NUT 5/15- 18	8	
60	2634	SPRING WARNING DECAL	2	
61	0202	HHCS 5/16- 18 X 1"	8	
62	0300B	FLAT WASHER 5/16	8	
63	1617	LEVER ASM. ....	2	INCLUDES ITEMS 2,3,5, 6,46,48,49,57 & 58

# HRT RIDE-ON POWER TROWEL — ELECTRIC PITCH CONTROL ASSY.

ELECTRIC PITCH CONTROL ASSY.



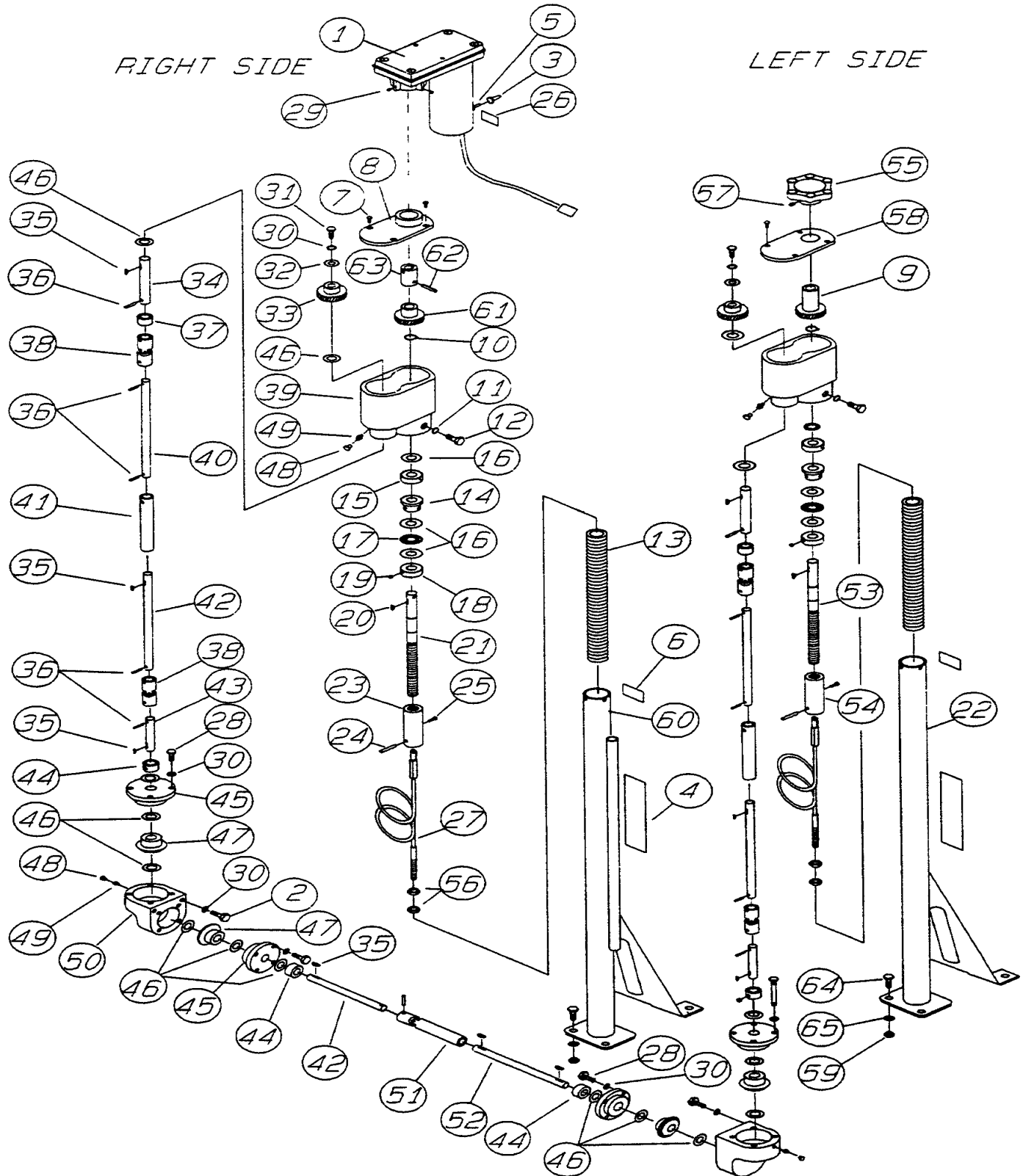
# HRT RIDE-ON POWER TROWEL — ELECTRIC PITCH CONTROL ASSY.

## ELECTRIC PITCH CONTROL ASSY.

<u>NO.</u>	<u>PART NO.</u>	<u>PART NAME</u>	<u>QTY.</u>	<u>REMARKS</u>
1	10482	HEAD	1	
2	4514	1/4- 20 X 5/8"	4	
3	8381	BOOT SWITCH COVER	1	
4	1499	WHITEMAN DECAL	2	
5	2596	SWITCH	1	
6	2634	SPRING WARNING DECAL	2	
7	2620	BHMS 10- 24 X 5/8"	8	
8	2592	COVER PLATE	1	
9	1529	MASTER GEAR	1	
10	1135	RETAINING RING .....	2	TO MA33523
10	10512	RETAINING RING .....	2	FROM MA33524
11	0161C	LOCK WASHER 5/16"	6	
12	0655	HHCS 5/16- 18 X 3/4"	6	
13	2156	SPRING	2	
14	1612	BEARING	2	
15	1604	BEARING	2	
16	2170	THRUST WASHER	6	
17	2169	THRUST BEARING	2	
18	2367	SET COLLAR	2	
19	0685	SHSS 5/16- 18 X 5/16"	4	
20	0126	WOODRUFF KEY #9	2	
21	10623	RIGHT SIDE PITCH CONTROL SCREW	1	
22	10548	PITCH CONTROL TUBE	1	
23	10383	RIGHT SIDE SLIDE BLOCK .....	1	TO ME34629
23	10721	RIGHT SIDE SLIDE BLOCK .....	1	FROM ME34630
24	1114	ROLL PIN .....	2	TO ME34629
24	10723	ROLL PIN .....	2	FROM ME34630
25	10382	SHOULDER BOLT 3/8 X 3/8"	2	
26	2881	BLADE PITCH DECAL	1	
27	2008	CABLE	2	
28	0730	HHCS 1/4- 20 X 1"	16	
29	10138	SHSS 1/4- 20 X 1/2"	4	
30	0181B	LOCK WASHER 1/4"	22	
31	1579	HHCS 1/4- 20 X 1/2"	2	
32	0948	FLAT WASHER 1/4"	2	
33	1530	SLAVE GEAR	2	
34	2007	SHAFT	2	
35	1578	WOODRUFF KEY #3	9	
36	1586	ROLL PIN	11	
37	2311	SPACER	2	
38	1536	U- JOINT	4	
39	10546	HOUSING	2	
40	2023	SHAFT	2	

# HRT RIDE-ON POWER TROWEL — ELECTRIC PITCH CONTROL ASSY.

ELECTRIC PITCH CONTROL ASSY.



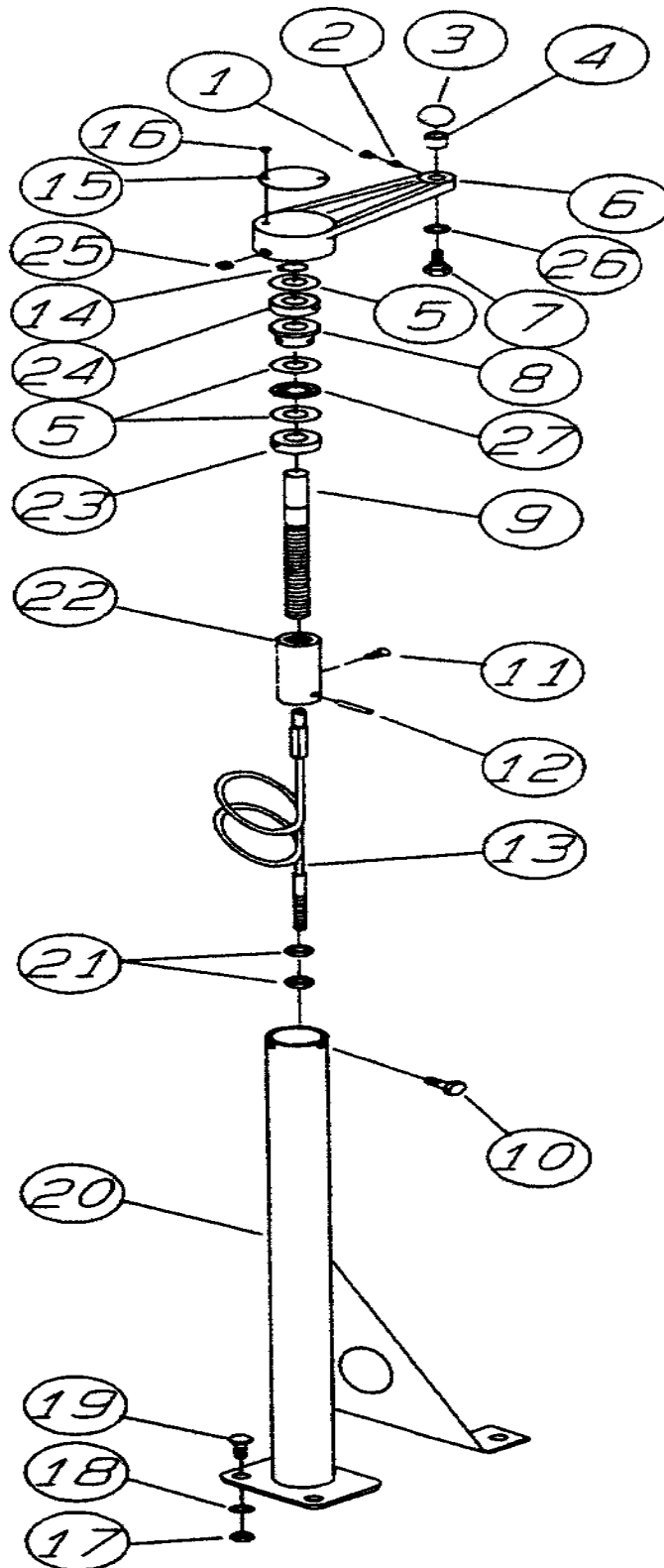
# HRT RIDE-ON POWER TROWEL — ELECTRIC PITCH CONTROL ASSY.

## ELECTRIC PITCH CONTROL ASSY.

<u>NO.</u>	<u>PART NO.</u>	<u>PART NAME</u>	<u>QTY.</u>	<u>REMARKS</u>
41	2012	SLEEVE	2	
42	2022	SHAFT	3	
43	2021	SHAFT	2	
44	1577	SET COLLAR	4	
45	1988	MITER BOX CAP	4	
46	1733	HARDENED WASHER	16	
47	2062	MITER GEAR	4	
48	1162A	LUBRA- CAP	4	
49	2621	GREASE FITTING	4	
50	1987	MITER BOX	2	
51	2104	SLEEVE	1	
52	2049	SHAFT	1	
53	10511	LEFT SIDE PITCH CONTROL SCREW	1	
54	10390	LEFT SIDE SLIDE BLOCK.....	1	TO ME34629
54	10722	LEFT SIDE SLIDE BLOCK.....	1	FROM ME34630
55	2591	STAR WHEEL	1	
56	1116	BRASS JAM NUT	4	
57	1528	SHSS 1/4- 20 X 5/16"	2	
58	2649	COVER PLATE	1	
59	5283	LOCK NUT 5/16- 18	8	
60	10647	RIGHT SIDE PITCH CONTROL TUBE	1	
61	2698	ELECTRIC PITCH GEAR	1	
62	2695	ROLL PIN	1	
63	2593	SLEEVE ADAPTER	1	
64	0202	HHCS 5/16- 18 X 1"	8	
65	0300B	FLAT WASHER 5/16"	8	

# HRT RIDE-ON POWER TROWEL — SINGLE PITCH CONTROL ASSY.

SINGLE PITCH CONTROL ASSY.



*NOTE TWO ASSEMBLIES REQUIRED PER MACHINE*

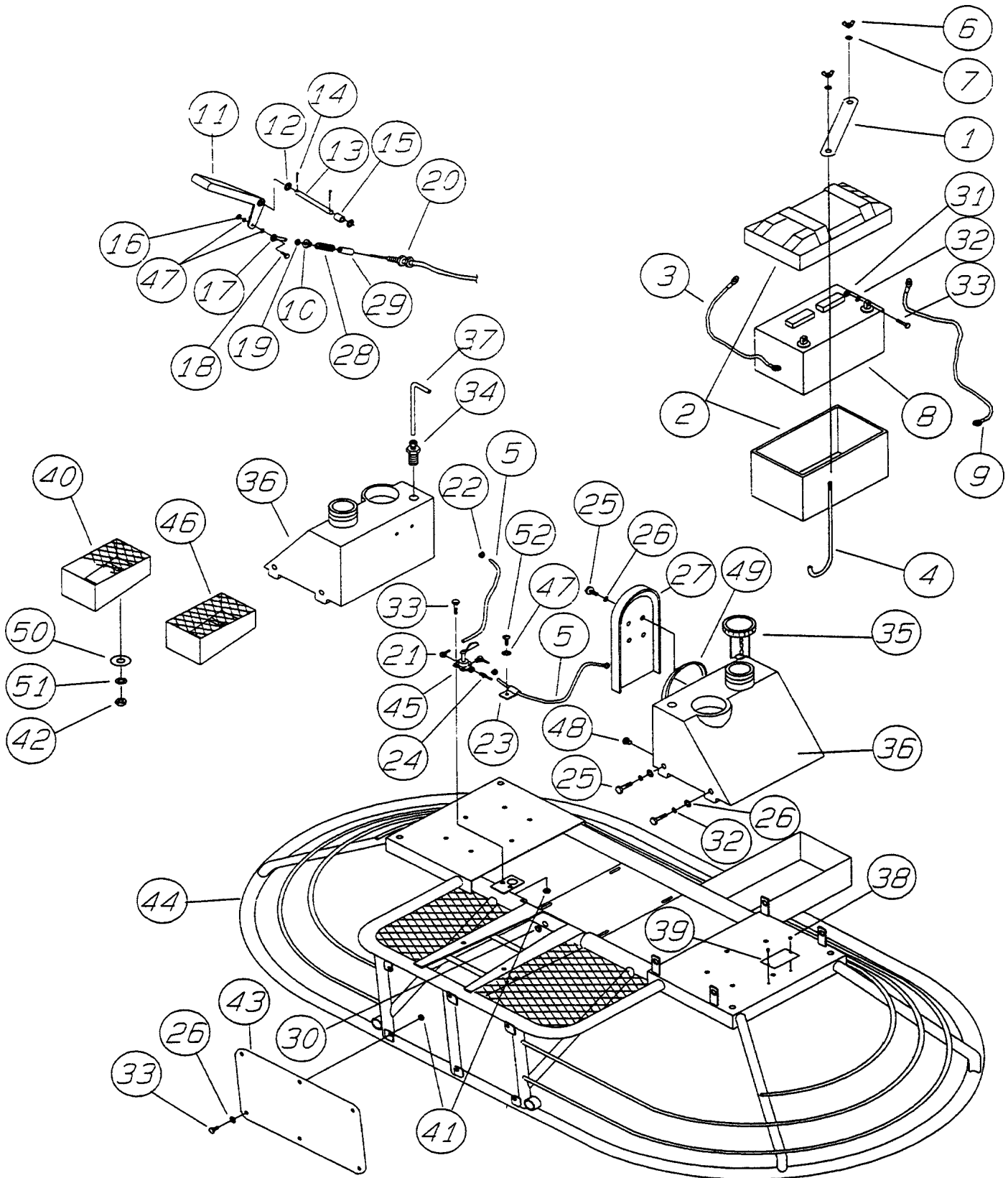
# HRT RIDE-ON POWER TROWEL — SINGLE PITCH CONTROL ASSY.

## SINGLE PITCH CONTROL ASSY.

<u>NO.</u>	<u>PART NO.</u>	<u>PART NAME</u>	<u>QTY.</u>	<u>REMARKS</u>
1	1162A	LUBRA- CAP	2	
2	2621	GREASE FITTING	2	
3	4403	CRANK KNOB	2	
4	3231	SPACER	2	
5	2170	THRUST WASHER	6	
6	2575	CRANK LEVER	2	
7	1616	SHOULDER BOLT	2	
8	1111	BEARING	2	
9	2929	TROWEL CONTROL SCREW .....	2	TO MA33523
9	10646	TROWEL CONTROL SCREW .....	2	FROM MA33524
10	0786	BHCS 1/4- 20 X 3/8"	2	
11	10382	3/8" SHOULDER BOLT	2	
12	1114	ROLL PIN .....	2	ME34629
12	10723	ROLL PIN .....	2	FROM ME34630
13	2008	CABLE	2	
14	1135	SNAP RING .....	1	TO MA33523
14	10512	SNAP RING .....	1	FROM MA33524
15	2300	PITCH CONTROL DECAL	2	
16	4014	2 X 3/16" U- DRIVE SCREW	4	
17	5283	LOCK NUT 5/16- 18	8	
18	0300B	FLAT WASHER 5/16"	8	
19	0202	HHCS 5/16- 18 X 1"	8	
20	10548	PITCH CONTROL TUBE	2	
21	1116	BRASS JAM NUT	4	
22	10383	SLIDE BLOCK .....	2	TO ME34629
22	10721	SLIDE BLOCK .....	2	FROM ME34630
23	2367	SET COLLAR	2	
24	1604	THRUST BEARING	2	
25	0185	SHSS 3/8- 16 X 3/8"	2	
26	1733	HARDENED WASHER	2	
27	2169	THRUST BEARING	2	

# HRT RIDE-ON POWER TROWEL — MAIN FRAME ASSY.

MAIN FRAME ASSY.



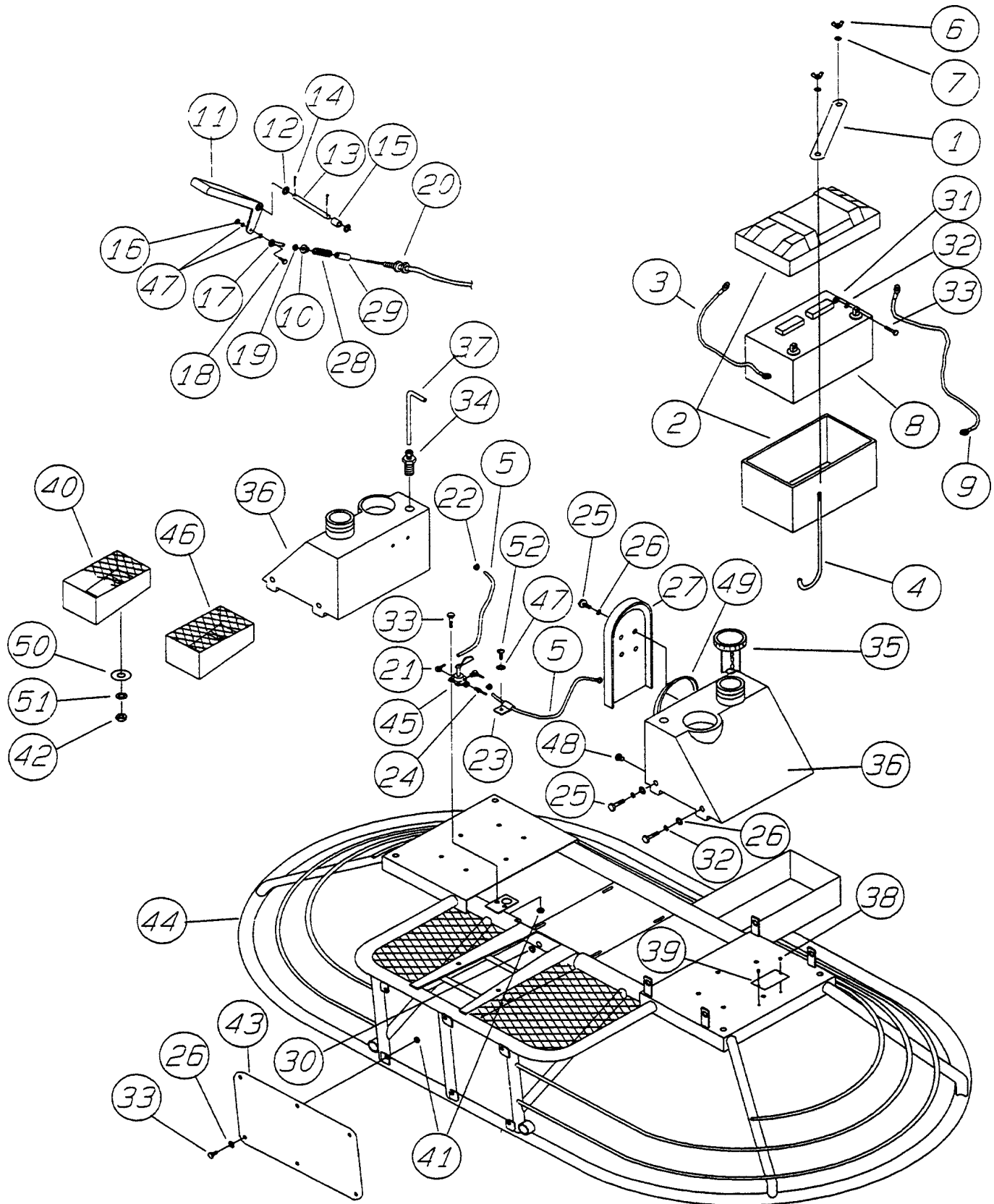
# HRT RIDE-ON POWER TROWEL — MAIN FRAME ASSY.

MAIN FRAMEASSY.

<u>NO.</u>	<u>PART NO.</u>	<u>PART NAME</u>	<u>QTY.</u>	<u>REMARKS</u>
1	106015	BATTERY STRAP	1	
2	2449	BATTERY BOX	1	
3	1597	NEGATIVE BATTERY CABLE (BLACK)	1	
4	10541	BATTERY HOLD DOWN ROD	2	
5	60013	FUEL HOSE .....	4 FT .....	FROM LF40390
6	2509	WING NUT 1/4- 20	2	
7	10031	EXT. SHKP WASHER 1/4"	2	
8	4671	BATTERY 12V DRY (GROUP U- 1)	1	
9	2541	POSITIVE BATTERY CABLE (RED) .....	1 .....	ONAN TO LF40389
9	2625	POSITIVE BATTERY CABLE (RED) .....	1 .....	ONAN FROM LF40390
10	2755	SPRING ADAPTER (SHORT)	1	
11	2086	ACCELERATOR PEDAL	1	
12	10136	FLAT WASHER 3/8"	2	
13	2772	PIN	1	
14	6014B	COTTER PIN	2	
15	3231	SPACER	1	
16	10019	LOCK NUT 10-32	1	
17	2153	SPHERICAL BEARING	1	
18	10018	SHCS 10- 32 X 1"	1	
19	0937	HEX NUT 10- 32	1	
20	2124	THROTTLE CABLE	1	
21	11024	FITTING .....	2 .....	FROM LF40390
22	19473	HOSE CLAMP	4	
23	8128	CLAMP .....	2 .....	FROM LF4390
24	11023	FITTING .....	1 .....	FROM LF40390
25	4514	HHCS 1/4- 20 X 5/8"	10	
26	0948	FLAT WASHER 1/4"	14	
27	2429	SPARE BELT CARRIER	1	
28	2753	THROTTLE SPRING	1	
29	2754	SPRING ADAPTER (LONG)	1	
30	2923	RUBBER GROMMET	1	
31	0949	HEX NUT 1/4- 20	2	
32	0181B	LOCK WASHER 1/4"	10	
33	0131A	HHCS 1/4- 20 X 3/4"	10	
34	19088	FITTING .....	2 .....	FROM LF40121
35	2712	FUEL CAP/W GAUGE	2	
36	2028	FUEL TANK .....	2 .....	TO LF40120
36	1103	FUEL TANK .....	2 .....	FROM LF40121
37	11016	FUEL TUBE .....	2 .....	FROM LF40121
38	4014	2 X 3/16" U- DRIVE SCREW	2	
39	2411	SERIAL NUMBER PLATE	1	
40	2774	RIGHT SIDE FOOTREST	1	

# HRT RIDE-ON POWER TROWEL — MAIN FRAME ASSY.

MAIN FRAME ASSY.



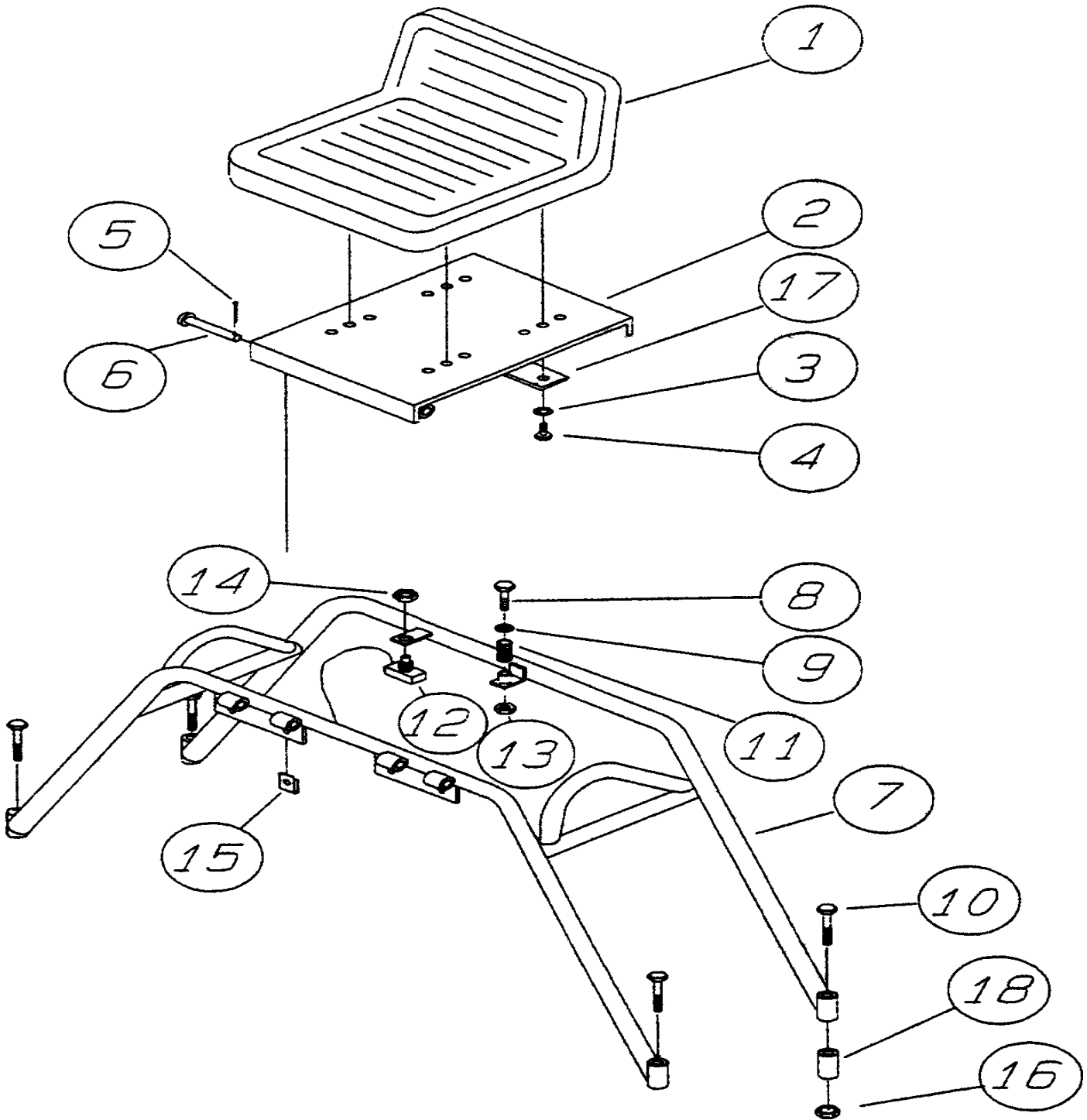
# HRT RIDE-ON POWER TROWEL — MAIN FRAME ASSY.

MAIN FRAMEASSY.

<u>NO.</u>	<u>PART NO.</u>	<u>PART NAME</u>	<u>QTY.</u>	<u>REMARKS</u>
41	10024	LOCK NUT 1/4- 20	8	
42	5283	LOCK NUT 5/16- 18	4	
43	2537	FRONT PANEL	1	
44	10624	MAIN FRAME	1	
45	11022	FUEL VALVE .....	1 .....	FROM LF40390
46	2773	LEFT SIDE FOOTREST	1	
47	2203	FLAT WASHER #10	5	
48	2161	FUEL VALVE .....	1 .....	TO LF40120
49	4213	SPARE BELT (B42) .....	2 .....	ONAN
49	2422	SPARE BELT (B41) .....	2 .....	KOHLER
50	3233	FENDER WASHER	4	
51	0300B	FLAT WASHER 5/16"	4	
52	5065B	RHMS 10-32 X 1/2" .....	3 .....	FROM LF40390

# HRT RIDE-ON POWER TROWEL — SEAT FRAME ASSY.

SEAT FRAME ASSY.



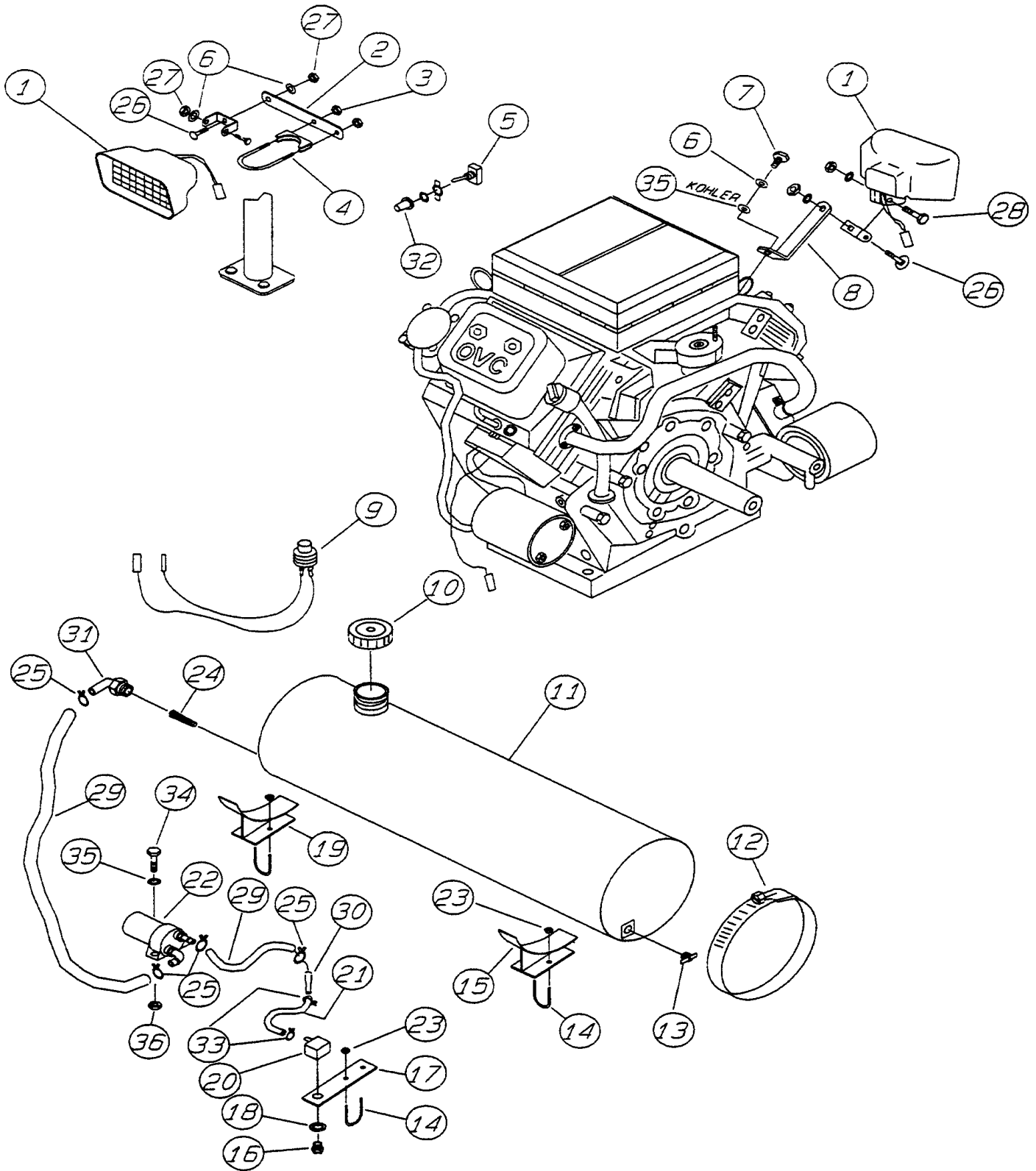
# HRT RIDE-ON POWER TROWEL — SEAT FRAME ASSY.

SEAT FRAMEASSY.

<u>NO.</u>	<u>PART NO.</u>	<u>PART NAME</u>	<u>QTY.</u>	<u>REMARKS</u>
1	2351	SEAT	1	
2	2409	SEAT MOUNTING PLATE	1	
3	0161C	LOCK WASHER 5/16"	4	
4	0655	HHCS 5/16- 18 X 3/4"	4	
5	0183	COTTER PIN	2	
6	8081	CLEVIS PIN	2	
7	2831	SEAT FRAME .....	1	ONAN
7	10395	SEAT FRAME .....	1	KOHLER
8	8156	HHCS 3/8- 16 X 2.1/2"	1	
9	4001	FLAT WASHER	1	
10	10306	HHCS 1/2- 13 X 4.1/2" .....	4	ONAN
10	2549	HHCS 1/2- 13 X 3"	4	
11	2585	COIL SPRING	1	
12	2584	KILL SWITCH	1	
13	10133	LOCK NUT 3/8- 16	1	
14	2906	PANEL NUT 3/8- 32	1	
15	10284	CLIP- ON LOCK NUT 10- 32 .....	2	KOHLER
16	10176	LOCK NUT 1/2- 13	4	
17	2833	SWITCH ADAPTER .....	1	ONAN
18	2893	SPACER .....	4	ONAN

# HRT RIDE-ON POWER TROWEL — LIGHTS & RETARDANT SPRAY ASSY.

LIGHTS & RETARDANT SPRAY OPTIONS ASSY.



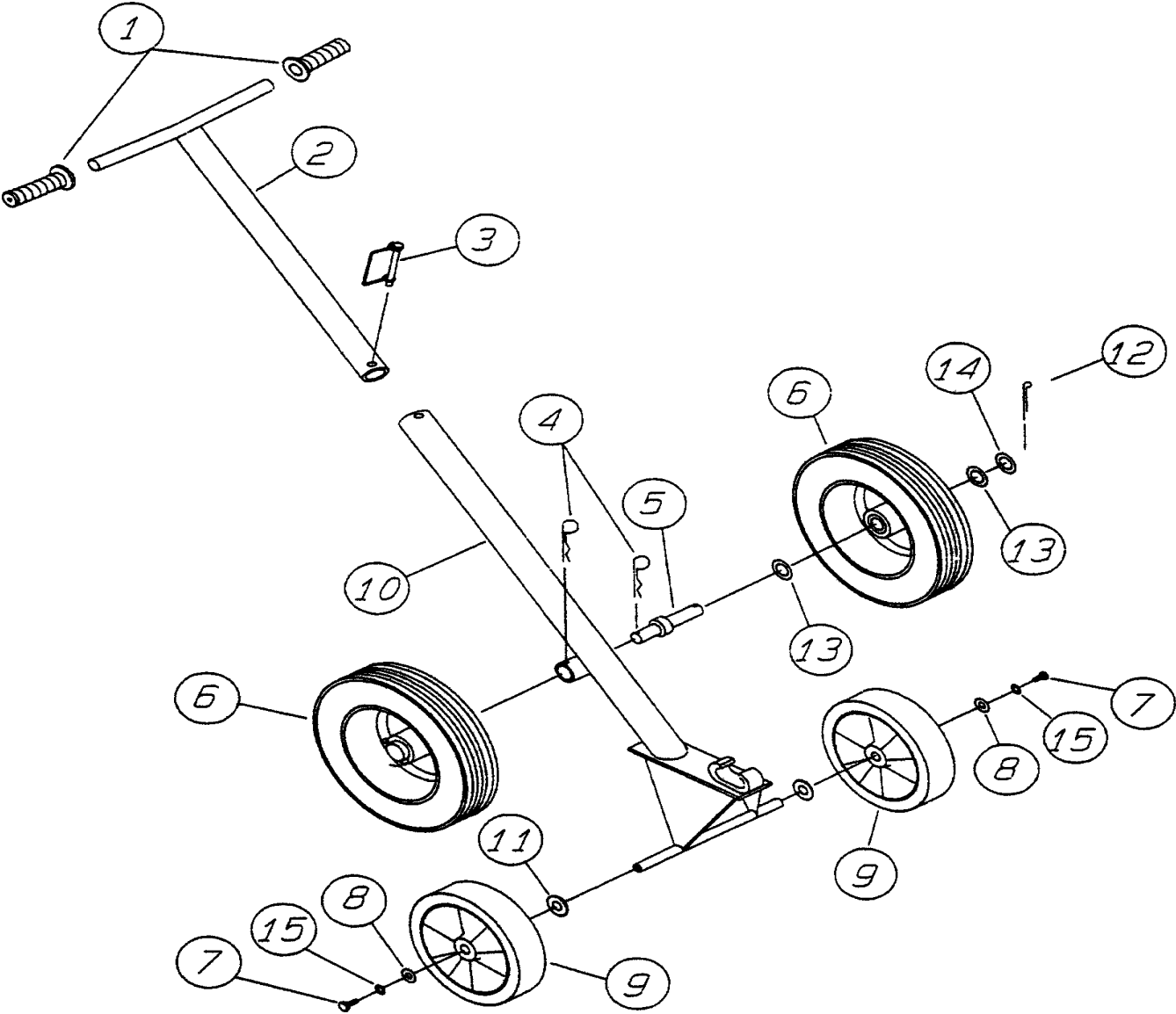
# HRT RIDE-ON POWER TROWEL — LIGHTS & RETARDANT SPRAY ASSY.

## LIGHTS & RETARDANT SPRAY OPTIONS ASSY.

<u>NO.</u>	<u>PART NO.</u>	<u>PART NAME</u>	<u>QTY.</u>	<u>REMARKS</u>
1	2896	LIGHT AND MOUNTING HARDWARE	3	
2	2531	FRONT MOUNTING BRACKET	2	
3	5283	LOCK NUT 5/16- 18	8	
4	2534	CLAMP ASM.	2	
5	4682	SWITCH	1	
6	0161C	LOCK WASHER 5/16" .....	7	ONAN
6	0181B	LOCK WASHER 1/4" .....	1	KOHLER
7	2299	HHCSM8- 1.25 X 15MM .....	1	ONAN
7	10485	HHCS M6- 1 X 40MM .....	1	KOHLER
8	2430	REAR MOUNTING BRACKET	1	
9	2765	RETARDANT SPRAY BUTTON	1	
10	2108	TANK CAP	1	
11	2916	RETARDANT TANK	1	
12	2398	CLAMP	2	
13	2478	DRAIN COCK	1	
14	2399	U- BOLT	2	
15	2887	RIGHT MOUNTING BRACKET	1	
16	392292	SPRAY NOZZLE	1	
17	2873	MOUNTING BRACKET	1	
18	2898	RUBBER WASHER	1	
19	2886	LEFT MOUNTING BRACKET	1	
20	2912	90 DEGREE FITTING	1	
21	2914	HOSE	1	
22	10043	PUMP ASM.	1	
23	2656	LOCK NUT 5/16- 24	6	
24	2926	STRAINER	1	
25	2918	HOSE CLAMP	4	
26	0655	HHCS 5/16- 18 X 3/4"	3	
27	0161D	HEX NUT 5/16- 18	6	
28	0300A	HHCS 5/16- 18 X 2"	3	
29	2913	LOWER HOSE	1	
30	10022	REDUCER	1	
31	2925	90 DEGREE ELBOW	1	
32	8381	BOOT	1	
33	2930	HOSE CLAMP	2	
34	0131A	HHCS 1/4- 20 X 3/4"	2	
35	0948	FLAT WASHER 1/4"	2	
36	10024	LOCK NUT 1/4- 20	2	

# HRT RIDE-ON POWER TROWEL — E-Z MOVER & LIFT HANDLE ASSY.

E-Z MOVER & LIFT HANDLE ASSY.



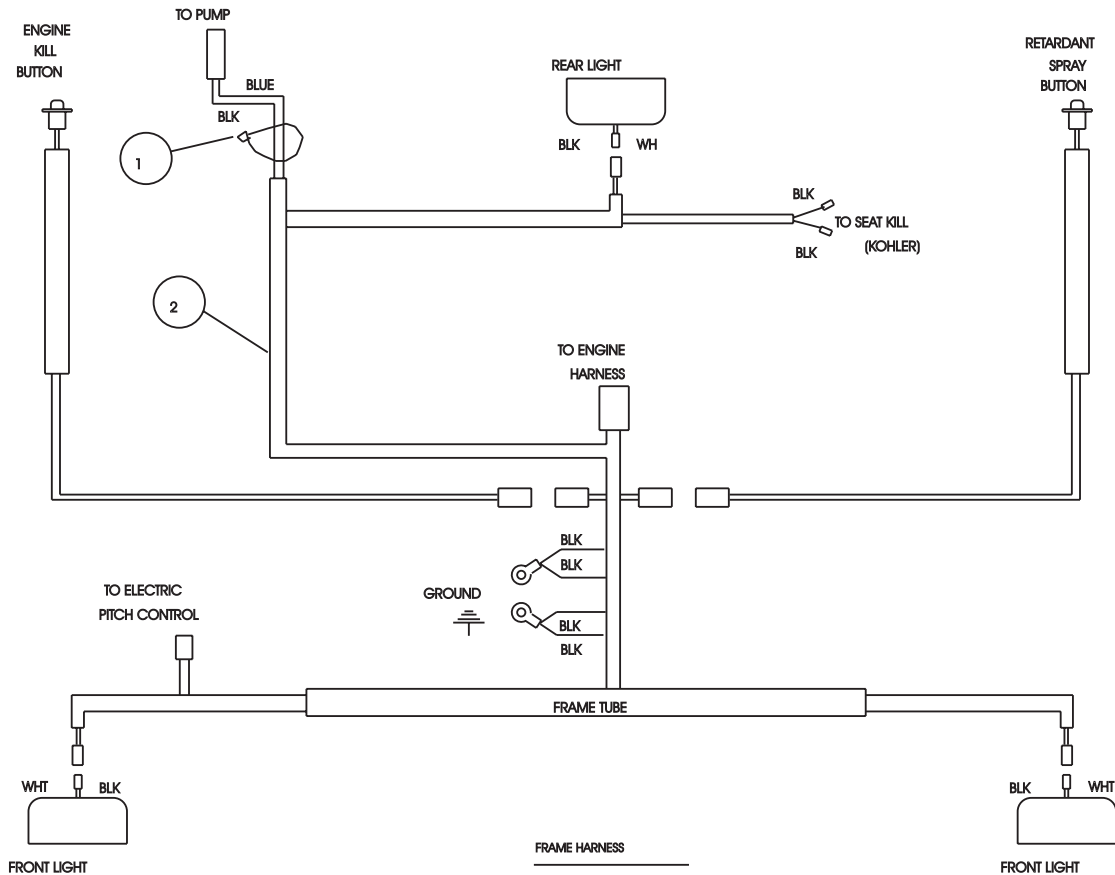
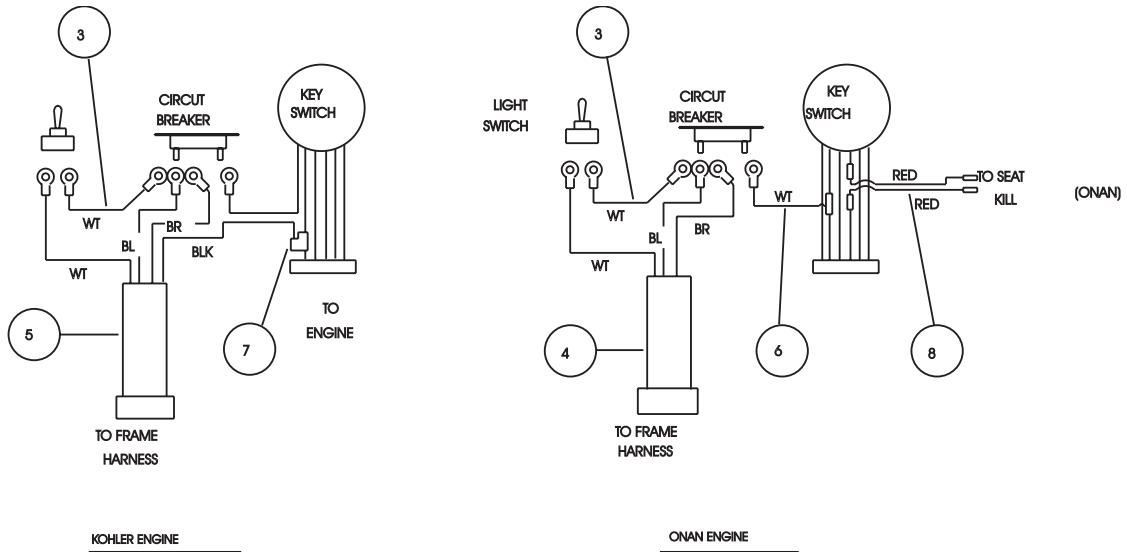
# HRT RIDE-ON POWER TROWEL — E-Z MOVER & LIFT HANDLE ASSY.

## E-Z MOVER & LIFT HANDLE ASSY.

<u>NO.</u>	<u>PART NO.</u>	<u>PART NAME</u>	<u>QTY.</u>	<u>REMARKS</u>
1	0189	HAND GRIP	2	
2	2336	E- Z MOVER HANDLE	1	
3	1869	SNAP PIN	1	
4	7170	CLIP	2	
5	10444	DOLLY AXLE	2	
6	10440	WHEEL & TIRE	2	
7	0655	HHCS 5/16- 18 X 3/4"	2	
8	0300B	FLAT WASHER 5/16"	2	
9	2364	WHEEL	2	
10	10445	E- Z MOVER FRAME	1	
11	4684	FLAT WASHER 5/8"	2	
12	0183	COTTER PIN	2	
13	10446	FLAT WASHER 3/4"	4	
14	8151	FLAT WASHER 3/4" SAE	2	
15	0161C	LOCK WASHER 5/16"	2	
	EMR- 1	E- Z MOVER ASM.		

# HRT RIDE-ON POWER TROWEL — WIRING DIAGRAM ASSY.

## WIRING DIAGRAM ASSY.



# HRT RIDE-ON POWER TROWEL — WIRING DIAGRAM ASSY.

## WIRING DIAGRAM ASSY.

<u>NO.</u>	<u>PART NO.</u>	<u>PART NAME</u>	<u>QTY.</u>	<u>REMARKS</u>
1	1662	WIRE TIES	14	
2	2566	WIRING HARNESS ASM. ....	1	TO PJ29574
2	2775	WIRING HARNESS ASM. ....	1	FROM PJ29575
3	2769	LIGHT WIRE	1	
4	2919	ENGINE HARNESS .....	1	ONAN
5	2945	ENGINE HARNESS .....	1	KOHLER
6	2770	POWER WIRE .....	1	ONAN
7	1475	WIRE SPLICE .....	1	ONAN
8	2767	SEAT KILL WIRE .....	1	ONAN

**PAYMENT TERMS**

Terms of payment for parts are net 10 days.

**FREIGHT POLICY**

All parts orders will be shipped collect or prepaid with the charges added to the invoice. All shipments are F.O.B. point of origin. Multiquip's responsibility ceases when a signed manifest has been obtained from the carrier, and any claim for shortage or damage must be settled between the consignee and the carrier.

**MINIMUM ORDER**

The minimum charge for orders from Multiquip is \$15.00 net. Customers will be asked for instructions regarding handling of orders not meeting this requirement.

**RETURNED GOODS POLICY**

Return shipments will be accepted and credit will be allowed, subject to the following provisions:

1. A Returned Material Authorization must be approved by Multiquip prior to shipment.
2. To obtain a Return Material Authorization, a list must be provided to Multiquip Parts Sales that defines item numbers, quantities, and descriptions of the items to be returned.
  - a. The parts numbers and descriptions must match the current parts price list.
  - b. The list must be typed or computer generated.
  - c. The list must state the reason(s) for the return.
  - d. The list must reference the sales order(s) or invoice(s) under which the items were originally purchased.
  - e. The list must include the name and phone number of the person requesting the RMA.
3. A copy of the Return Material Authorization must accompany the return shipment.

4. Freight is at the sender's expense. All parts must be returned freight prepaid to Multiquip's designated receiving point.
5. Parts must be in new and resalable condition, in the original Multiquip package (if any), and with Multiquip part numbers clearly marked.
6. The following items are not returnable:
  - a. Obsolete parts. (If an item is listed in the parts price book as being replaced by another item, it is obsolete.)
  - b. Any parts with a limited shelf life (such as gaskets, seals, "O" rings, and other rubber parts) that were purchased more than six months prior to the return date.
  - c. Any line item with an extended dealer net price of less than \$5.00.
  - d. Special order items.
  - e. Electrical components.
  - f. Paint, chemicals, and lubricants.
  - g. Decals and paper products.
  - h. Items purchased in kits.
7. The sender will be notified of any material received that is not acceptable.
8. Such material will be held for 5 working days from notification, pending instructions. If a reply is not received within 5 days, the material will be returned to the sender at his expense.
9. Credit on returned parts will be issued at dealer net price at time of the original purchase, less a 15% restocking charge.
10. In cases where an item is accepted for which the original purchase document can not be determined, the price will be based on the list price that was effective twelve months prior to the RMA date.
11. Credit issued will be applied to future purchases only.

**PRICING AND REBATES**

Prices are subject to change without prior notice. Price changes are effective on a specific date and all orders received on or after that date will be billed at the revised price. Rebates for price declines and added charges for price increases will not be made for stock on hand at the time of any price change.

Multiquip reserves the right to quote and sell direct to Government agencies, and to Original Equipment Manufacturer accounts who use our products as integral parts of their own products.

**SPECIAL EXPEDITING SERVICE**

A \$20.00 to \$50.00 surcharge will be added to the invoice for special handling including bus shipments, insured parcel post or in cases where Multiquip must personally deliver the parts to the carrier.

**LIMITATIONS OF SELLER'S LIABILITY**

Multiquip shall not be liable here under for damages in excess of the purchase price of the item with respect to which damages are claimed, and in no event shall Multiquip be liable for loss of profit or good will or for any other special, consequential or incidental damages.

**LIMITATION OF WARRANTIES**

No warranties, express or implied, are made in connection with the sale of parts or trade accessories nor as to any engine not manufactured by Multiquip. Such warranties made in connection with the sale of new, complete units are made exclusively by a statement of warranty packaged with such units, and Multiquip neither assumes nor authorizes any person to assume for it any other obligation or liability whatever in connection with the sale of its products. A part from such written statement of warranty, there are no warranties, express, implied or statutory, which extend beyond the description of the products on the face hereof.

# PARTS MANUAL

## **HERE'S HOW TO GET HELP**

*PLEASE HAVE THE MODEL AND SERIAL NUMBER  
ON-HAND WHEN CALLING*

### **PARTS DEPARTMENT**

*800/427-1244 or 310/537-3700*

*FAX: 800/672-7877 or 310/637-3284*

### **SERVICE DEPARTMENT**

*800/478-1244 or 310/537-3700*

*FAX: 310 - 537-4259*

### **WARRANTY DEPARTMENT**

*800/421-1244, EXT. 279 or 310/537-3700*

*FAX: 310 - 537-1173*

### **MAIN**

*800/421-1244 or 310/537-3700*

*FAX: 310 - 537-3927*



**MULTIQUIP INC.**

POST OFFICE BOX 6254

CARSON, CA 90749

310-537-3700 • 800-421-1244

FAX: 310-537-3927

E-MAIL: [mq@multiquip.com](mailto:mq@multiquip.com)

WWW: [multiquip.com](http://multiquip.com)

Atlanta • Boise • Dallas • Houston • Newark  
Quebec, Canada • Manchester, UK • Rio De Janeiro, BR • Guadalajara, MX