

**MQ** **MULTIQUIP**

# Welders



**Dependable welding performance**

**Construction Starts Here**

[www.multiquip.com](http://www.multiquip.com)



# 135 to 180 Amp Welders

## BATTERY-POWERED WELDER

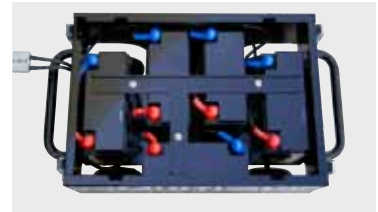


180 amp welder  
Battery powered  
**BDW180MC**

### BDW180MC

- One-of-a-kind rechargeable battery welder.
- Quiet with no exhaust fumes; great for indoor use.
- Light weight and compact — just 129 pounds.
- Up to 180 Amps of welding power (True DC power).
- Digital Control Panel.

Welding Applications	BDW
<b>SMAW</b> — Shielded Metal Arc Welding	✓
<b>FCAW</b> — Flux Core Arc Welding	—
<b>GMAW</b> — Gas Metal Arc Welding	—
<b>GTAW</b> — Gas Tungsten Arc Welding	✓
<b>ACAC</b> — Air Carbon Arc Cutting	—



Battery compartment houses five rechargeable 12 Volt batteries.

## Complete range of engine driven welders.

Multiquip welders deliver premium performance in sizes ranging from 135 amps to 500 amps. Whether you are looking for a

gasoline-powered machine for small repairs or a large diesel-powered machine for service truck or industrial applications Multiquip has the best welders in the industry.



135 amp welder  
1.5kW AC output  
Honda gas engine  
**GAW135H**

### GAW135H

- **Permanent magnet alternator design** significantly reduces overall weight compared to other welders in its class.
- **Compact design** fits easily in the box of a service truck or the basket of high reach equipment. At only 114 pounds it's easy to move around the job site.
- **135 Amp DC Welder and 1.5kW 120VAC output** is ideal for hard to reach areas such as rooftops or air conditioner repair. *Note: Simultaneous operation not available on this unit.*
- **Powered by a Honda GX200 engine** with recoil start and standard idle control and low-oil shutdown.

Welding Applications	GAW
<b>SMAW</b> — Shielded Metal Arc Welding	✓
<b>FCAW</b> — Flux Core Arc Welding	✓
<b>GMAW</b> — Gas Metal Arc Welding	—
<b>GTAW</b> — Gas Tungsten Arc Welding	—
<b>ACAC</b> — Air Carbon Arc Cutting	—



180 amp welder  
3kW AC output  
Honda gas engine  
Electric start  
**GAW180HE**

### GAW180HE

- **Ultra-clean AC power** — voltage regulation  $\pm 3\%$
- **Permanent magnet alternator design** reduces overall weight up to 30% compared to other welders in its class.
- **Arc force control** allows the operator to fine tune DC current during low voltage welding conditions and helps prevent electrodes from sticking during short arc length welding.
- **180 Amp DC Welder and 3.0kW 120V AC output** — operator can simultaneously use both features.
- **Powered by a Honda GX340 engine** with push-button electric start and recoil start. Idle control and low-oil shutdown are standard.

Welding Applications	GAW
<b>SMAW</b> — Shielded Metal Arc Welding	✓
<b>FCAW</b> — Flux Core Arc Welding	✓
<b>GMAW</b> — Gas Metal Arc Welding	—
<b>GTAW</b> — Gas Tungsten Arc Welding	✓
<b>ACAC</b> — Air Carbon Arc Cutting	—



# 225 Amp Welder

## SDW225SSA

As a welder it delivers up to 225 amps of DC welding power in either CC (constant current) or CV (constant voltage) mode. Additionally, it provides up to 6kW of 120/240 volt AC power.

- **Low noise level** — produces only 63 dBA.
- **Outstanding arc characteristics** make it ideal for welding pipe and structural steel.
- **Ultra-clean AC power** — voltage regulation  $\pm 2\%$ .
- **Dependable Tier 4 Kubota diesel engine**, with electric start, is backed by a three-year engine manufacturer's warranty. A standard self-priming fuel system allows quick starting even if the engine is run dry. Automatic idle control is standard for improved fuel economy.

- **Safety shut-downs** are provided for water, oil level and DC thermal overload.
- **Optional trailer** is available for highway towing and push cart for shop use.
- **Also available in light tower configuration** as model MLT-SDW7.



Full instrumentation including controls for both CC and CV welding.



Also available in light tower configuration as model MLT-SDW7



Welding Applications	SDW
SMAW — Shielded Metal Arc Welding	✓
FCAW — Flux Core Arc Welding	✓
GMAW — Gas Metal Arc Welding	✓
GTAW — Gas Tungsten Arc Welding	✓
ACAC — Air Carbon Arc Cutting	✓

225 amp welder  
 6kW AC output  
 Kubota diesel engine  
 Optional remote control  
**SDW225SSA**



# 300 Amp Welder

## DLW300ESA

This CC (constant current) and CV (constant voltage) welder delivers up to 300 amps of DC welding power. Additionally, it provides up to 10.5 kW of 120/240 volt AC power.

- **Low noise level** — produces only 67 dBA.
- **Outstanding arc characteristics** plus the ability to connect machines together for parallel operation.
- **Ultra-clean AC power** — voltage regulation  $\pm 1.5\%$ .
- **Weld and use AC power at the same time.**
- **E-Mode** improves fuel efficiency by allowing the operator to weld with engine at idle speed at up to 160 amps. Reduces operating costs and noise levels.
- **Arc force control** allows the operator to fine tune DC current during low voltage welding conditions and helps prevent electrodes from sticking during short arc length welding.
- **Dependable Tier 4 Kubota diesel engine** is backed by a three-year engine manufacturer's warranty. A standard self-priming fuel system allows quick starting even if the engine is run dry. Automatic idle control is standard for improved fuel economy.
- **Safety shut-downs** are provided for water, oil level and DC thermal overload.
- **Optional trailer** is available for highway towing.



*Full instrumentation is protected by a vandal proof cover. LED display provides clear readout of load characteristics.*

## Remote Control

Optional remote control allows the operator to adjust amperage up to 100 feet away from the machine.



300 amp welder  
10.5kW AC output  
Kubota diesel engine  
**DLW300ESA**

Welding Applications	DLW
SMAW — Shielded Metal Arc Welding	✓
FCAW — Flux Core Arc Welding	✓
GMAW — Gas Metal Arc Welding	✓
GTAW — Gas Tungsten Arc Welding	✓
ACAC — Air Carbon Arc Cutting	✓



# 340 Amp Welder

## DLW330X2

This CC (Constant Current) and CV (Constant Voltage) welder delivers up to 340 amps of operation for one man, or simultaneous two man operation with 200 amps of output per operator. Additionally, it provides up to 10.5 kW of 120/240 volt AC power. This is the welder that gives you more spark for your arc.

- **Low noise level** — produces only 66 dBA.
- **One or Two-man operation.** Independent controls and up to 200 amps for each operator or 340 amps for one operator.
- **E-Mode** improves fuel efficiency by allowing the operator to weld with the engine at idle speed at up to 200 amps. Greatly reduces operating costs and noise levels.
- **Arc Force Control** allows the operator to fine tune DC current during low voltage welding conditions and helps prevent electrodes from sticking during short arc length welding.
- **Dependable Kubota diesel engine** is backed by a three-year engine manufacturer's warranty. A standard self-priming fuel system allows quick starting even if the engine is run dry. Automatic idle control is standard for improved fuel economy.
- **SmartStick** — this sensor automatically shuts off the engine during periods of no load and restarts it when the operator strikes the welding rod. The variable sensor — adjustable from one to 30 minutes — enables the operator to select the optimum working conditions and reduce fuel consumption.



*Full instrumentation is protected by a vandal proof cover. LED display provides clear readout of load characteristics.*

## SmartStick

*Innovative SmartStick technology automatically stops the engine if no welding or AC power is used for a preset time (1 minute to 30 minutes).*

*To restore power, the operator needs only to strike the welding stick.*



340 amp welder  
 10.5kW AC output  
 Kubota diesel engine  
 Single and dual operation  
 Optional remote control  
**DLW330X2**

Welding Applications	DLW
SMAW — Shielded Metal Arc Welding	✓
FCAW — Flux Core Arc Welding	✓
GMAW — Gas Metal Arc Welding	✓
GTAW — Gas Tungsten Arc Welding	✓
ACAC — Air Carbon Arc Cutting	✓



# 400 Amp Welder

## DLW400ESA

This CC (Constant Current) and CV (Constant Voltage) welder delivers up to 400 amps of operation for one man, or simultaneous two man operation with 200 amps of output per operator. Additionally, it provides up to 14 kW of 120/240 volt AC power.

- **Low noise level** — produces only 69 dBA.
- **Outstanding arc characteristics** plus the ability to connect machines together for parallel operation.
- **One or Two-man operation.** Independent controls and up to 200 amps for each operator or 400 amps for one operator.
- **Dependable Tier 4 Kubota diesel engine** is backed by a three-year engine manufacturer's warranty. A standard self-priming fuel system allows quick starting even if the engine is run dry. Automatic idle control is standard for improved fuel economy.
- **E-Mode** improves fuel efficiency by allowing the operator to weld with the engine at idle speed at up to 240 amps. Greatly reduces operating costs and noise levels.
- **Arc Force Control** allows the operator to fine tune DC current during low voltage welding conditions and helps prevent electrodes from sticking during short arc length welding.
- **Safety shut-downs** are provided for water, oil level and DC thermal overload.
- **Optional trailer** is available for highway towing.



*Full instrumentation is protected by a vandal proof cover. LED display provides clear readout of load characteristics.*

## Remote Control

Optional remote control allows the operator to adjust amperage up to 100 feet away from the machine. DLW400ESA allows two operators to weld simultaneously, each with his own optional remote control.



*The DLW400ESA allows two welders to work simultaneously — each with his own remote control.*

Welding Applications	DLW
SMAW — Shielded Metal Arc Welding	✓
FCAW — Flux Core Arc Welding	✓
GMAW — Gas Metal Arc Welding	✓
GTAW — Gas Tungsten Arc Welding	✓
ACAC — Air Carbon Arc Cutting	✓

400 amp welder  
14kW AC output  
Kubota diesel engine  
Single and dual operation  
Optional remote controls  
**DLW400ESA**



# 500 Amp Welder

## DAW500SA

This CC (constant current) CV (constant voltage) welder delivers up to 500 amp of DC welding output. Additionally, it provides up to 3kW of 120/240 volt AC power. This unit can be simultaneously used a welder and to supply AC power for other equipment

- **Low noise level** — produces only 74 dBA.
- **Outstanding arc characteristics** plus the ability to connect machines together for parallel operation.
- **Brushless permanent generator design** for lower maintenance.
- **Dependable Tier 4 Kubota diesel engine** is backed by a three-year engine manufacturer's warranty. A standard self-priming fuel system allows quick starting even if the engine is run dry. Automatic idle control is standard for improved fuel economy.

- **Safety shut-downs** are provided for water, oil level and DC thermal overload.
- **Optional trailer is available** for highway towing.



Full instrumentation includes DC voltmeter and ammeter.



500 amp welder  
 3kW AC output  
 Kubota diesel engine  
 Optional remote control  
**DAW500SA**

Welding Applications	DAW
SMAW — Shielded Metal Arc Welding	✓
FCAW — Flux Core Arc Welding	✓
GMAW — Gas Metal Arc Welding	✓
GTAW — Gas Tungsten Arc Welding	✓
ACAC — Air Carbon Arc Cutting	✓

# Portable Welder Specifications

MODEL	GAW135H	BDW180MC	GAW180HE	SDW225SSA	DLW300ESA	DLW330X2	DLW400ESA	DAW500SA
<b>DC WELDER FEATURES</b>								
DC Rated Voltages (Single Operation)	25.2 (CC)	26.8 (CC)	26.8 (CC)	28(CC)/15-28(CV)	31(CC)/14-33(CV)	31(CC)/14-33(CV)	34(CC)/14-36(CV)	38(CC)/22-40(CV)
DC Rated Voltages (Dual Operation)	N/A	N/A	N/A	N/A	N/A	26.6 (CC) / 14-28 (CV)	27 (CC) / 14-36 (CV)	N/A
DC Rated Current, amps (Single Operation)	135	170	180	225	300	340	400	500
DC Rated Current, amps (Dual Operation)	N/A	N/A	N/A	N/A	N/A	165A x 2	175A x 2	N/A
100% Duty Cycle @ 100%, amps	40% @ 135A	40% @ 120A	50% @ 180A	200A	280A	280A / 2 x 165A	350A / 2 x 175A	350A
Current Range, amp	40-135	30-180	30-180	50-225	30-300	30-340 / 2 x 30-200	60-400 / 2 x 30-200	50-500
Constant Voltage — Constant Voltage (CV)	N/A	N/A	N/A	Standard				
Constant Current — Constant Voltage (CC)	Standard							
Welding Processes	SMAW; FCAW; GMAW; GTAW; ACAC							
<b>AC OUTPUT</b>								
Maximum Output — kw AC Single Phase	1.5	N/A	3.0	6.6	10.5	10.5	14	3
Frequency	60							
Voltage	120 V	N/A	120 V	120/240 V				120 V
Amperage	12.5	N/A	25.0	50.0 / 25.0	87.0 / 44.0	87.0 / 44.0	116.0 / 58.0	25.0
Voltage Regulation	5%	N/A	5%	3%	1.5%	1.5%	1.5%	7%
Receptacles (see chart below)	A	N/A	A, C	A, C, F	A, C, E, H	A, C, E, H	A, C, E, H	A, C
<b>ENGINE FEATURES</b>								
Manufacturer / Engine Model	Honda GX200	(5) 12V-12Ah Batteries	Honda GX340	Kubota Z482	Kubota D722	Kubota D902	Kubota V1305	Kubota D1803
No. Cylinders; HP‡; RPM	1; 6.5 HP; 3600 RPM	N/A	1; 9.5 HP; 3600 RPM	2; 12.0 HP; 3600 RPM	3; 19.0 HP; 3600 RPM	3; 24.0 HP; 3600 RPM	4; 31.5 HP; 3600 RPM	3; 34.5 HP; 2700 RPM
Fuel Type	Gasoline	N/A	Gasoline	Diesel	Diesel	Diesel	Diesel	Diesel
Fuel Tank Capacity — gal.	1.9	N/A	3.7	6.6	9.5	9.5	11.1	12.0
Fuel Consumption @ Rated Load — gph	0.48	N/A	0.7	0.7	1.1	1.1	1.5	1.5
Starting Method	Recoil with Electric/Battery not included	N/A	Recoil with Electric/Battery not included	Electric with Battery				
<b>GENERAL FEATURES</b>								
Simultaneous Use — AC/DC	No	N/A	zStandard					
Noise Level — dBA @ 23 feet	75	N/A	76	63	67	66	69	74
Lifting Bale	No	No	Standard					
External Drains — Water	N/A	N/A	N/A	Standard				
External Drains — Oil, Fuel	N/A	N/A	N/A	Standard				
Automatic Safety Shutdowns	Oil Pressure	N/A	Oil Pressure	Oil Pressure; Water Temperature; Thermal Switch DC; Low Battery Charger				
<b>DIMENSIONS AND WEIGHT</b>								
Dimensions — L x W x H in.	22 x 19 x 21	21 x 12 x 18	28 x 22 x 26	45 x 26 x 32	51 x 27 x 33	51 x 27 x 33	61 x 29 x 35	53 x 32 x 36
Dry Weight lbs.	114	129	236	675	849	893	1,092	1,072
<b>OPTIONS</b>								
Trailers	N/A	N/A	N/A	LTRL-10W*; TRLR-MPXF**	TRLR-10W; TRLR-MPXF**	TRLR-MP; TRLR-MPXF**	TRLR-MP; TRLR-MPXF**	TRLR-MP; TRLR-MPXF**
Wheel Kit	UWKA	Standard	UWKA	WKT225A	N/A	N/A	N/A	N/A
Remote Control	N/A	N/A	N/A	Optional	Optional	Optional	Optional	Optional

\*Requires adapter kit. \*\* TRLR-MPXF has built-in 28 gallon fuel cell

© COPYRIGHT 2010, MULTIQUP INC.

## RECEPTABLE IDENTIFICATION CHART

Match the letter codes in the specification table to the receptacles below.



**A** — NEMA 5-20R 125V duplex 20A w/GFCI



**B** — NEMA L5-20R 125V 20A twist lock

**C** — NEMA L5-30R 125V 30A twist lock



**D** — NEMA L6-20R 250V 20A twist lock

**E** — NEMA L6-30R 250V 30A twist lock



**F** — NEMA L14-30R 125/250V 30A twist lock



**G** — NEMA 7410 250V 20A twist lock



**H** — CS-6369 125/250VAC 50A twist lock

**Welders Warranty:** Models rated at 180 amps and below include a **two-year warranty** covering parts and labor.

Models rated at 225 amps and above include a **three-year (or 3,000 hours) warranty** covering parts and labor. Contact Multiquip for complete warranty information.

## Welding Cable Information

**2E50** — 50' #2 Cable with electrode holder  
**2E100** — 100' #2 Cable with electrode holder  
**2E150** — 150' #2 Cable with electrode holder  
**10E50** — 50' #1/0 Cable with electrode holder

**10E100** — 100' #1/0 Cable with electrode holder  
**10E150** — 150' #1/0 Cable with electrode holder  
**2G50** — 50' #2 Cable with ground clamp  
**2G100** — 100' #2 Cable with ground clamp

**2G150** — 150' #2 Cable with ground clamp  
**10G50** — 50' #1/0 Cable with ground clamp  
**10G100** — 100' #1/0 Cable with ground clamp  
**10G150** — 150' #1/0 Cable with ground clamp

‡ All horsepower ratings are supplied by engine manufacturers.

‡‡ The power rating of the Honda engine indicated in this document is the net power output tested on a production engine for the engine model and measured in accordance with SAE J1349 at 3600 rpm. Mass production engines may vary from this value. Actual power output for the engine installed in the final machine will vary depending on numerous factors, including the operating speed of the engine in application, environmental conditions, maintenance and other variables.

All features and specifications are subject to change without notice.  
 MQWELD-397 Rev. L (08-10)  
 Units manufactured by Denyo Mfg. Co.



**MULTIQUP INC.**  
 POST OFFICE BOX 6254  
 CARSON, CA 90749  
 310-537-3700 • 800-421-1244  
 FAX: 310-537-3927  
 E-MAIL: mq@multiquip.com  
 www.multiquip.com