

# PARTS MANUAL



## **MODEL MLT25DCA DEDICATED LIGHT TOWER (ISUZU BV-4LE2 DIESEL ENGINE) USED WITH DCA25SSIU3 60HZ GENERATOR**

Revision #0 (07/17/15)

To find the latest revision of this  
publication, visit our website at:  
[www.multiquip.com](http://www.multiquip.com)



**THIS MANUAL MUST ACCOMPANY THE EQUIPMENT AT ALL TIMES.**

**PN: 49809**

## TABLE OF CONTENTS

---

### MLT25 Series Light Tower

Table Of Contents.....	2
Parts Ordering Procedures.....	3
Explanation Of Code In Remarks Column.....	4
Suggested Spare Parts .....	5

### Component Drawings

Nameplate And Decals Assembly (Mast) .....	6-7
Nameplate And Decals Assembly (Trailer) .....	8-9
Switchgear Assembly .....	10-11
Ballast Assembly .....	12-13
Fuse Block Assembly .....	14-15
Step Plate Assembly .....	16-17
Stanchion Assembly .....	18-19
Rear Mast Support Assembly.....	20-21
Outrigger Jack Assembly.....	22-23
Mounting Plate Assembly .....	24-25
Tower Assembly.....	26-27
Winch Assy. (Dutton-Lainson).....	28-29
T-Bar Assembly .....	30-31
Lamp Assembly .....	32-33
Coil Cord Assembly .....	34-35
Trailer Assembly .....	36-37
Actuator Assembly .....	38-39
Fuel Tank Assembly.....	40-41

Terms And Conditions Of Sale — Parts .....	42
--	----

#### **NOTICE**

Specifications and part numbers are subject to change without notice.

# PARTS ORDERING PROCEDURES

## Ordering parts has never been easier! Choose from three easy options:

Effective:  
January 1<sup>st</sup>, 2006



### Order via Internet (Dealers Only):

Order parts on-line using Multiquip's SmartEquip website!

- View Parts Diagrams
- Order Parts
- Print Specification Information



If you have an MQ Account, to obtain a Username and Password, E-mail us at: **parts@multiquip.com**.

To obtain an MQ Account, contact your District Sales Manager for more information.

Goto [www.multiquip.com](http://www.multiquip.com) and click on

**Order Parts** to log in and save!

Use the **internet** and qualify for a **5% Discount** on *Standard orders* for all orders which include complete part numbers.\*

Note: Discounts Are Subject To Change



### Order via Fax (Dealers Only):

All customers are welcome to order parts via Fax.

**Domestic (US) Customers dial:**

1-800-6-PARTS-7 (800-672-7877)

**Fax** your order in and qualify for a **2% Discount** on *Standard orders* for all orders which include complete part numbers.\*

Note: Discounts Are Subject To Change



**Order via Phone:** Domestic (US) Dealers Call:  
1-800-427-1244

### Non-Dealer Customers:

Contact your local Multiquip Dealer for parts or call 800-427-1244 for help in locating a dealer near you.



**International Customers** should contact their local Multiquip Representatives for Parts Ordering information.

## When ordering parts, please supply:

- ☐ Dealer Account Number
- ☐ Dealer Name and Address
- ☐ Shipping Address (if different than billing address)
- ☐ Return Fax Number
- ☐ Applicable Model Number
- ☐ Quantity, Part Number and Description of Each Part

### ☐ Specify Preferred Method of Shipment:

- ☒ UPS/Fed Ex
- ☒ Priority One
- ☐ Ground
- ☐ Next Day
- ☐ Second/Third Day
- ☒ DHL
- ☒ Truck

### NOTICE

All orders are treated as *Standard Orders* and will ship the same day if received prior to 3PM PST.

WE ACCEPT ALL MAJOR CREDIT CARDS!



www.multiquip.com



## EXPLANATION OF CODE IN REMARKS COLUMN

The following section explains the different symbols and remarks used in the Parts section of this manual. Use the help numbers found on the back page of the manual if there are any questions.

### NOTICE

The contents and part numbers listed in the parts section are subject to change **without notice**. Multiquip does not guarantee the availability of the parts listed.

### SAMPLE PARTS LIST

NO.	PART NO.	PART NAME	QTY.	REMARKS
1	12345	BOLT .....	1	INCLUDES ITEMS W/%
2%		WASHER, 1/4 IN. ....		NOT SOLD SEPARATELY
2%	12347	WASHER, 3/8 IN. ...	1	MQ-45T ONLY
3	12348	HOSE .....		A/R ...MAKE LOCALLY
4	12349	BEARING .....	1	S/N 2345B AND ABOVE

### NO. Column

**Unique Symbols** — All items with same unique symbol (@, #, +, %, or >) in the number column belong to the same assembly or kit, which is indicated by a note in the “Remarks” column.

**Duplicate Item Numbers** — Duplicate numbers indicate multiple part numbers, which are in effect for the same general item, such as different size saw blade guards in use or a part that has been updated on newer versions of the same machine.

### NOTICE

When ordering a part that has more than one item number listed, check the remarks column for help in determining the proper part to order.

### PART NO. Column

**Numbers Used** — Part numbers can be indicated by a number, a blank entry, or TBD.

TBD (To Be Determined) is generally used to show a part that has not been assigned a formal part number at the time of publication.

A blank entry generally indicates that the item is not sold separately or is not sold by Multiquip. Other entries will be clarified in the “Remarks” Column.

### QTY. Column

**Numbers Used** — Item quantity can be indicated by a number, a blank entry, or A/R.

A/R (As Required) is generally used for hoses or other parts that are sold in bulk and cut to length.

A blank entry generally indicates that the item is not sold separately. Other entries will be clarified in the “Remarks” Column.

### REMARKS Column

Some of the most common notes found in the “Remarks” Column are listed below. Other additional notes needed to describe the item can also be shown.

**Assembly/Kit** — All items on the parts list with the same unique symbol will be included when this item is purchased.

Indicated by:

“INCLUDES ITEMS W/(unique symbol)”

**Serial Number Break** — Used to list an effective serial number range where a particular part is used.

Indicated by:

“S/N XXXXX AND BELOW”

“S/N XXXX AND ABOVE”

“S/N XXXX TO S/N XXX”

**Specific Model Number Use** — Indicates that the part is used only with the specific model number or model number variant listed. It can also be used to show a part is NOT used on a specific model or model number variant.

Indicated by:

“XXXXX ONLY”

“NOT USED ON XXXX”

**“Make/Obtain Locally”** — Indicates that the part can be purchased at any hardware shop or made out of available items. Examples include battery cables, shims, and certain washers and nuts.

**“Not Sold Separately”** — Indicates that an item cannot be purchased as a separate item and is either part of an assembly/kit that can be purchased, or is not available for sale through Multiquip.

## SUGGESTED SPARE PARTS

---

### MLT25 SERIES LIGHT TOWER WITH ISUZU BV-4LE2 DIESEL ENGINE

1 to 3 units

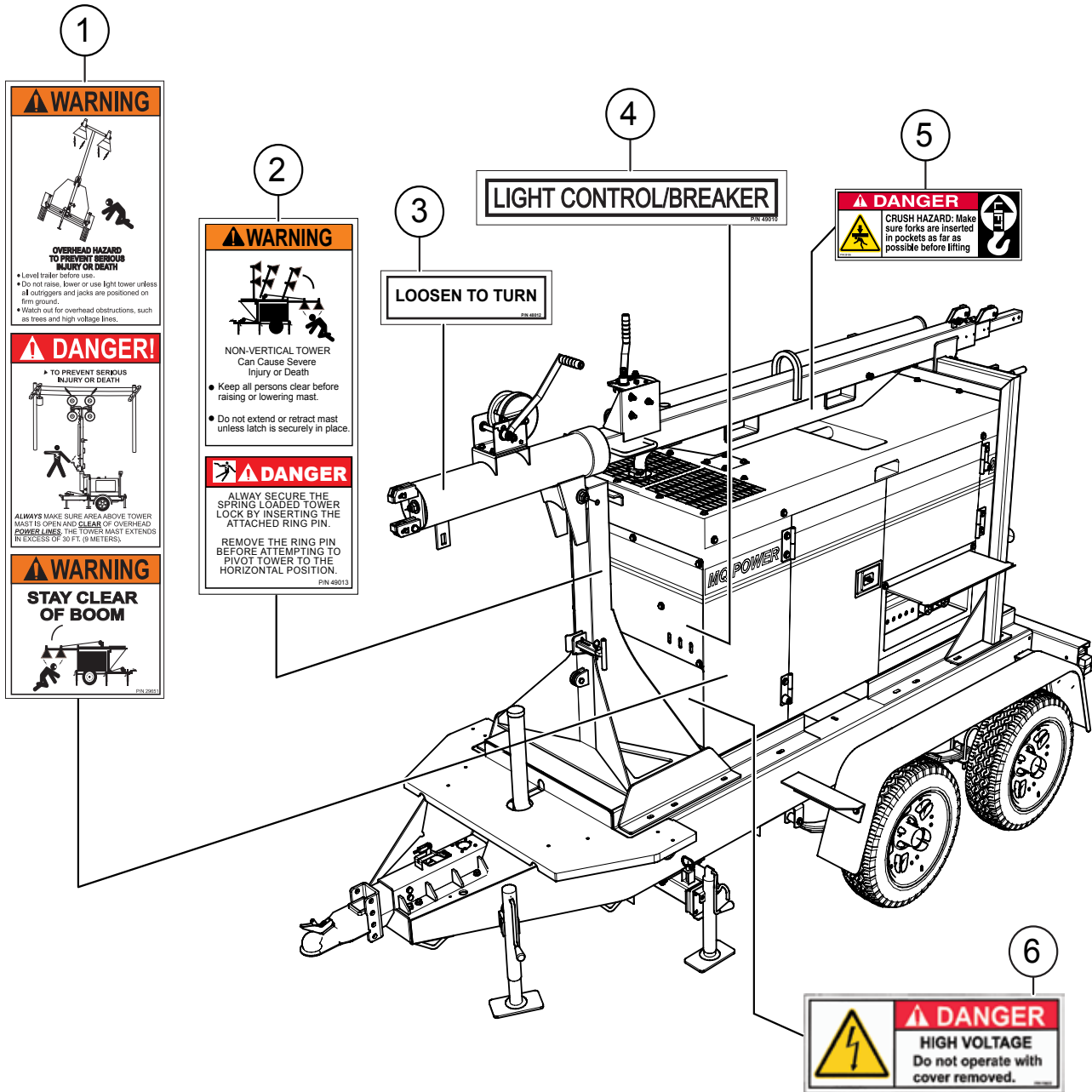
<u>Qty.</u>	<u>P/N</u>	<u>Description</u>
2.....	200ZG106.....	LENS GASKET
2.....	190ZQREF .....	LENS
2.....	50Z-D-REF-SUP...	SUPPORT, LAMP TIP
3.....	MVR1000BT37 .....	BULB
1.....	150Z-E267 .....	CORD SET, 60" W/ 3 PIN
		MALE PLUG
3.....	EE5799 .....	FUSE, CLASS CC, 15A
1.....	7V3177002 .....	CAP, 2" FUEL TANK

FOR SUGGESTED SPARE PARTS FOR THE DCA25SSIU3  
GENERATOR REFER TO OPERATION AND PARTS MANUAL PART  
NUMBER 49810 DCA25SSIU3 (USE WITH MLT25DCA LIGHT  
TOWER ONLY)

#### **NOTICE**

Part numbers on this Suggested Spare Parts list may  
supersede/replace the part numbers shown in the  
following parts lists.

# NAMEPLATE AND DECALS ASSY. (MAST)

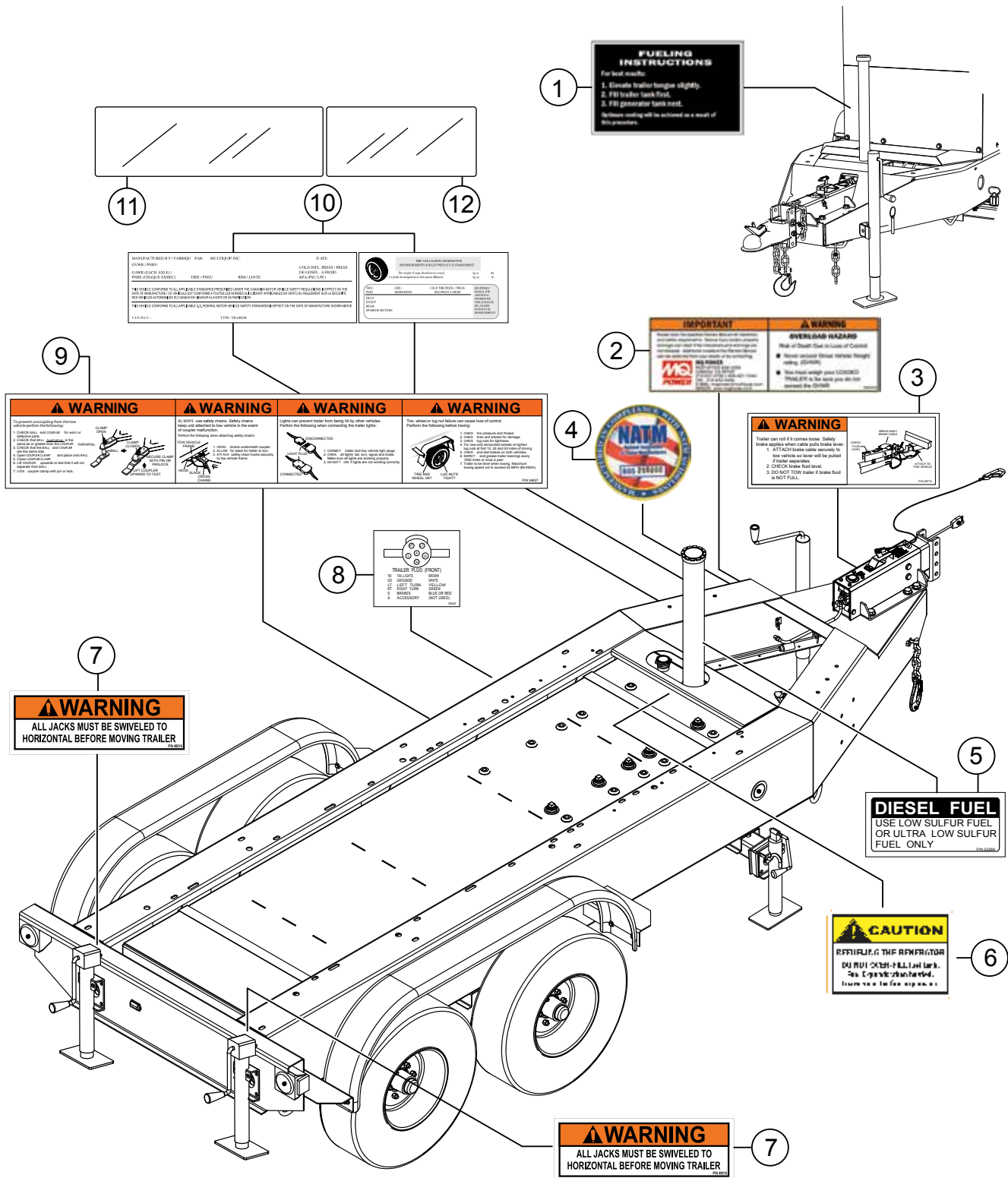


## NAMEPLATE AND DECALS ASSY.(MAST)

---

<u>NO.</u>	<u>PART NO.</u>	<u>PART NAME</u>	<u>QTY.</u>	<u>REMARKS</u>
1	29651	DECAL, MAST SAFETY .....	1.....	REPLACES DCL108 AND DCL120
2	49013	DECAL, STANCHION LATCH LT .....	1.....	REPLACES DCL109 AND DCL104
3	49012	DECAL, LOOSEN TO TURN MAST .....	1.....	REPLACES DCL116
4	49010	DECAL, LIGHT CONTROLS .....	1.....	REPLACES DCL115
5	29126	DECAL, INSERT FORKS .....	2.....	REPLACES DCL103
6	19655	DECAL, DANGER HIGH VOLTAGE .....	1.....	REPLACES DCL 29116

## NAMEPLATE AND DECALS ASSY. (TRAILER)

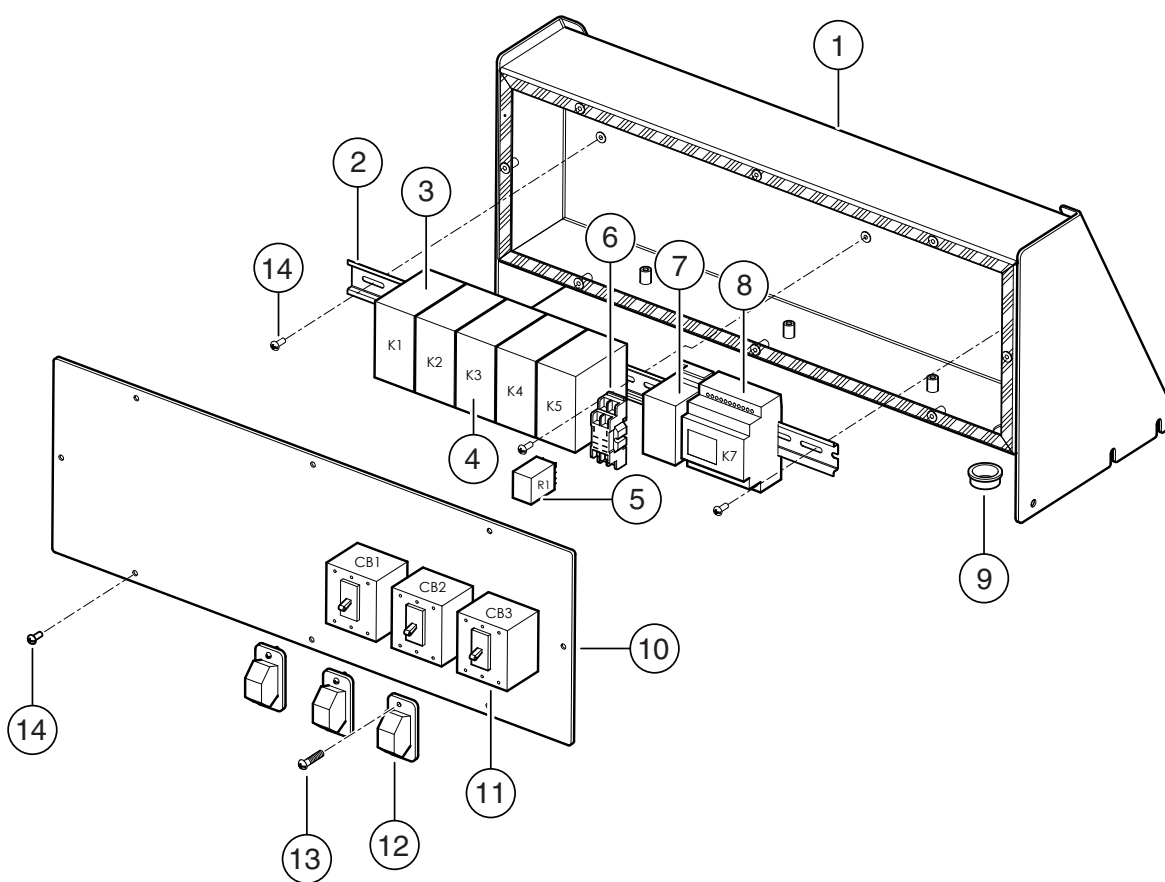




## NAMEPLATE AND DECALS ASSY. (TRAILER)

<u>NO.</u>	<u>PART NO.</u>	<u>PART NAME</u>	<u>QTY.</u>	<u>REMARKS</u>
1	EE56030	DECAL, FUELING INSTRUCTIONS	1	
2	EE45341	OVERLOAD HAZARD AND OPERATION WARNING	1	
3	29713	DECAL, BRAKE FLUID CHECK	1	
4	EE56342	DECAL, NATM MANUFACTURER COMPLIANCE	1	
5	22268	DECAL, LOW SULFUR DIESEL FUEL ONLY	1	
6	EE52343	LABEL-CAUTION DO NOT OVERFILL FUEL TANK	1	
7	49016	DECAL, HORIZONTAL JACKS.....	2	REPLACES DCL106
8	29440	DECAL, PLUG WIRING	1	
9	34627	DECAL, TRLR HITCH/WHEEL WARNING	1	
10	EE56312	LABEL, VIN AND TIRE	1	
11	EE56313	OVERLAY, VIN LABEL	1	
12	EE56314	OVERLAY, TIRE LABEL	1	

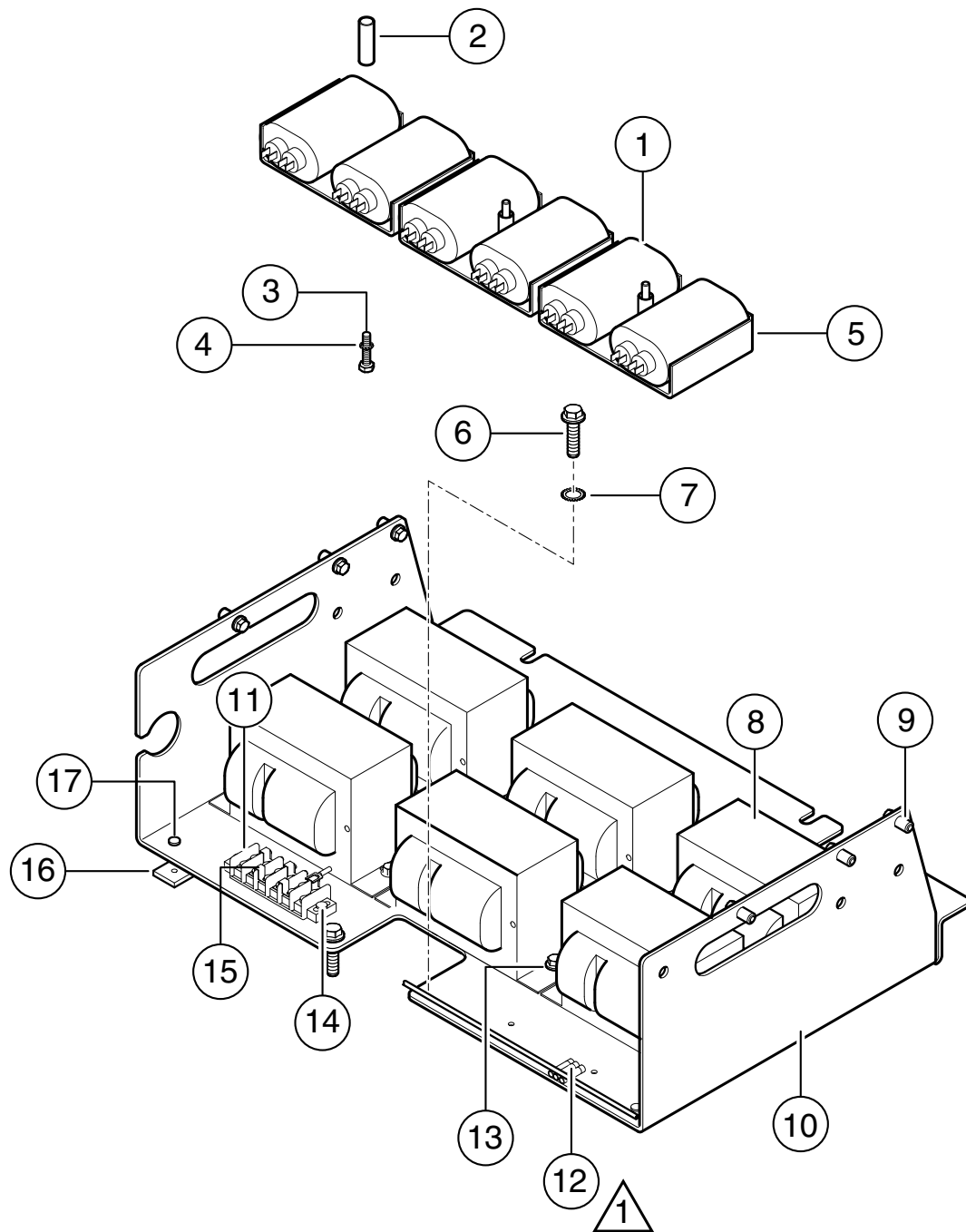
## SWITCHGEAR ASSY.




## SWITCHGEAR ASSY.

<u>NO.</u>	<u>PART NO.</u>	<u>PART NAME</u>	<u>QTY.</u>	<u>REMARKS</u>
1	49792	ENCLOSURE, SWITCHGEAR	1	
2	49804	DIN RAIL, TS3.5 X 7 X 23"	1	
3	49719	CONTACTOR, 4 POLE, 2NO, 2NC, 20A	1	
4	49718	CONTACTOR, 4 POLE, 4NO CONT., 20A.....4.....	4	K2 THRU K5
5	49720	RELAY, 10A, 2 POLE, 120 VAC COIL	1	
6	EE26385	BASE, RELAY, SNAP/SUR. MTG., 8-BLADE	1	
7	49703	AC VOLTAGE TRANSDUCER 5c07	1	
8	EE54364	RELAY, SMART, IDEC, 12/24VDC W/LCD	1	
9	49812	BUSHING, SNAP, 3/4 NPT X .94 ID	1	
10	49730	COVER, SWITCHGEAR ENCLOSURE	1	
11	49724	CIRCUIT BREAKER, 3 POLE, 15A	3	
12	EE10972	BOOT KIT, CIRCUIT BREAKER	3	
13	49806	SCREW, SEAL, 6-32 X 3/8"	6	
14	5065 B	SCREW, PHP 10-32 X 1/2"	11	

## BALLAST ASSY.



NOTE:  
 EXTEND BALLAST COM WIRE  
AS REQUIRED WITH P/N 2540  
BUTT CONNECTOR AND TRIMMED WIRE

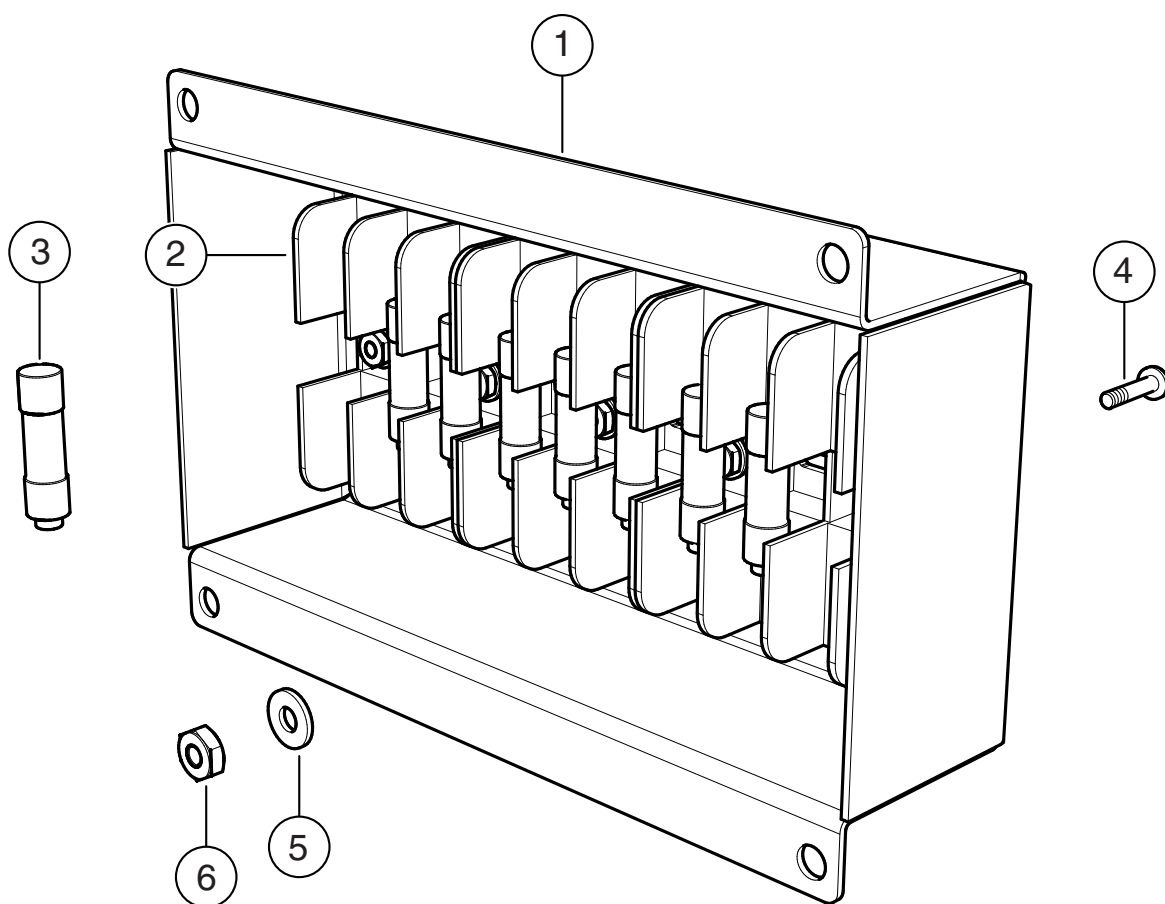
**BALLAST ASSY.**

---

<u>NO.</u>	<u>PART NO.</u>	<u>PART NAME</u>	<u>QTY.</u>	<u>REMARKS</u>
1	49689B	CAPACITOR, 24uf	6	
2	49786	STANDOFF, CAPACITOR MOUNT	3	
3	2508	SCREW, HHC 1/4-20 X 2-1/4"	3	
4	10031	WASHER, EXT. SHKP, 1/4"	3	
5	49805	CLAMP, CAPACITOR	3	
6	15226	SCREW, HHC FLANGED M8-1.25 x 25MM	2	
7	13339	WASHER, EXT. SHKP, 5/16"	1	
8	49689A	BALLAST TRANSFORMER	6	
9	19266	NUT, BLIND 1/4-20 X .027-.165	18	
10	49715	PLATE, BALLAST MOUNT	1	
11	49725	TERMINAL STRIP, 6 GANG DBL ROW	1	
12	2540	CONNECTOR, BUTT SPLICE, 16-14	3	
13	49048	SCREW, HHFS 1/4-20 X 3/4" GRD. 5	18	
14	49844	RIVET, POP, ALUM., 3/16" X 1/2" GRIP	2	
15	29071	CONNECTOR, QUICK, SCREW TERM	5	
16	49790	BLOCK, BALLAST TRAY SPACER	2	
17	19847	RIVET, POP, ALUM., 3/16 X 1/8-1/4 GRIP	2	

## FUSE BLOCK ASSY.

---

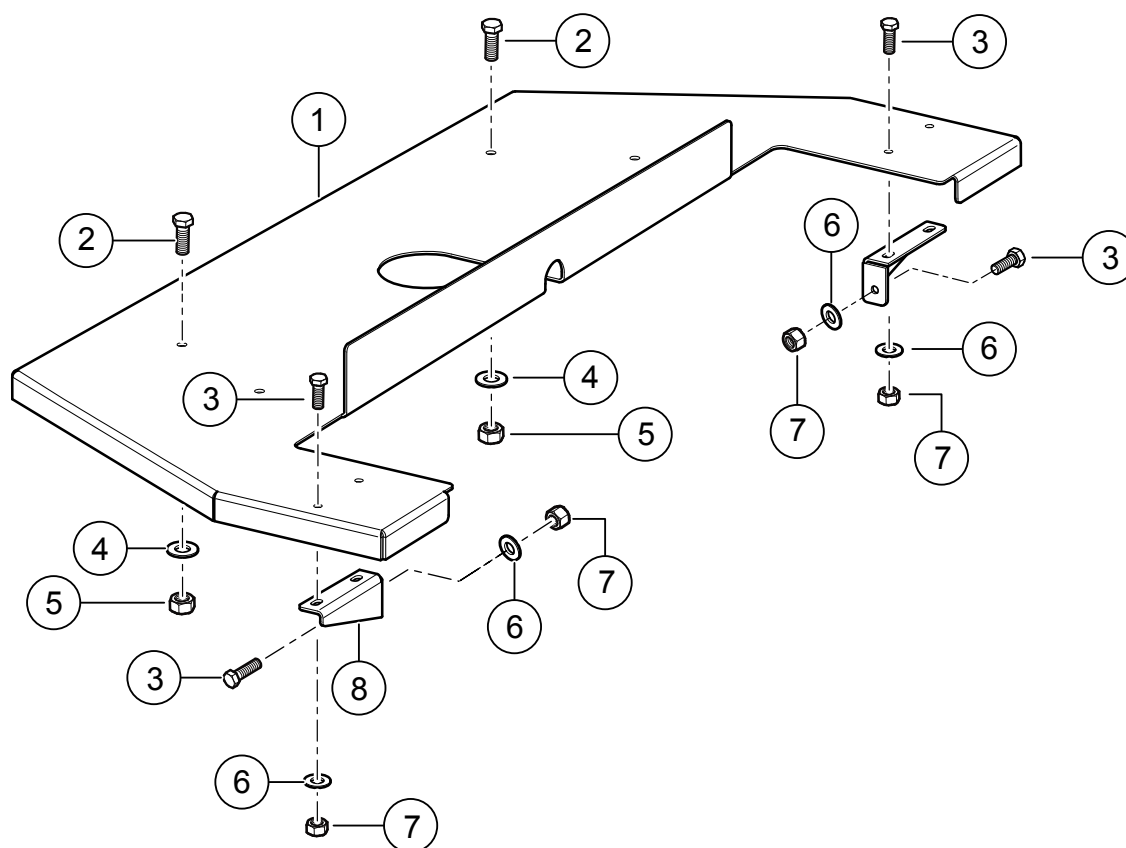


## **FUSE BLOCK ASSY.**

---

<b><u>NO.</u></b>	<b><u>PART NO.</u></b>	<b><u>PART NAME</u></b>	<b><u>QTY.</u></b>	<b><u>REMARKS</u></b>
1	49771	PLATE, FUSE MOUNT	1	
2	EE25467	FUSE BLOCK, 3 POLE	3	
3	EE5799	FUSE, CLASS CC, 15A	8	
4	15175	SCREW, PAN HEAD 8-32 X 3/4"	5	
5	15173	WASHER, FLAT #8	5	
6	13287	NUT, NYLOC 8-32	5	

## STEP PLATE ASSY.



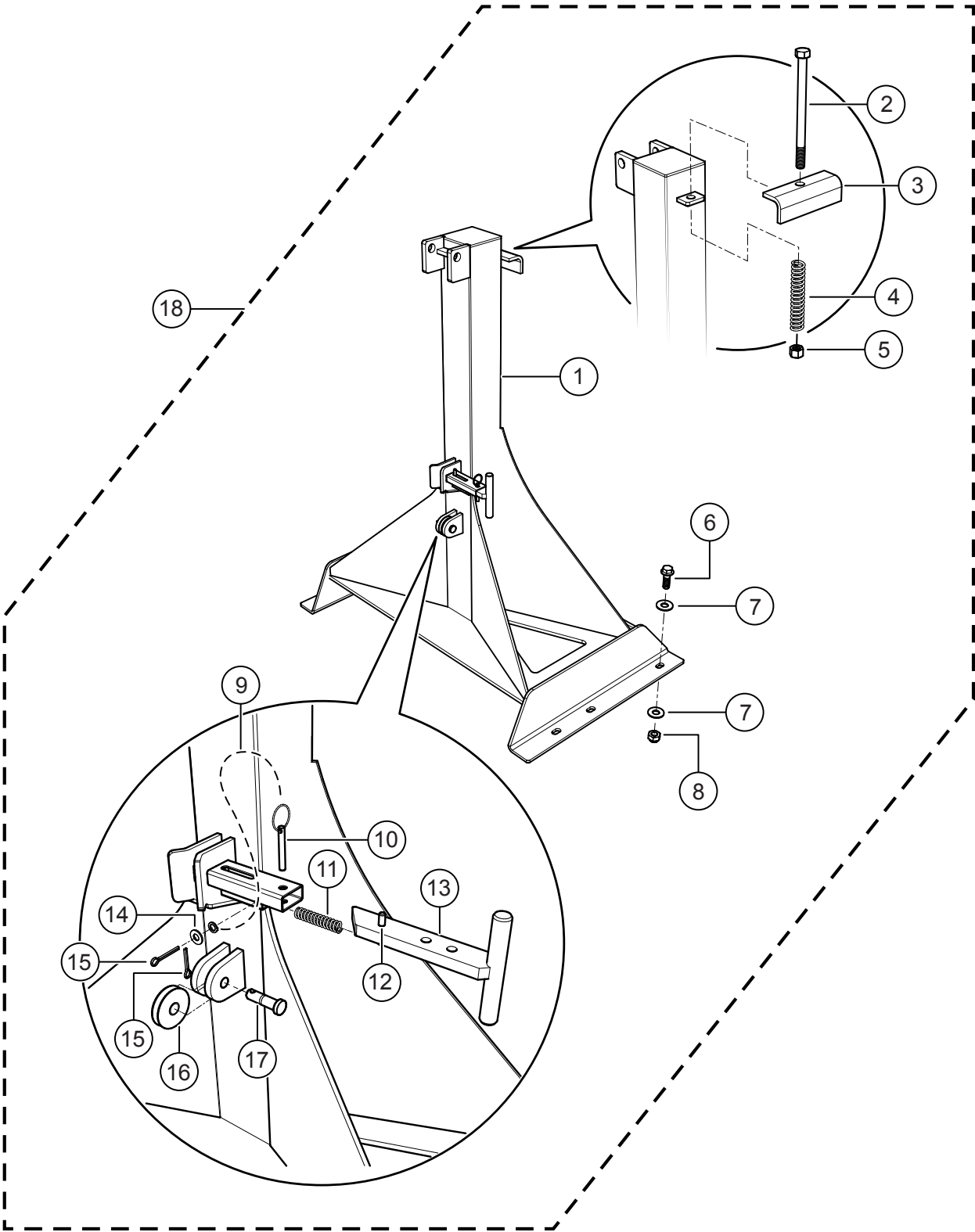


## STEP PLATE ASSY.

---

<u>NO.</u>	<u>PART NO.</u>	<u>PART NAME</u>	<u>QTY.</u>	<u>REMARKS</u>
1	49579	PLATE, FRAME STEP	1	
2	0205	SCREW, HHC 3/8-16 X 1.0	4	
3	0202	SCREW, HHC 5/16-1 ZINC	6	
4	4001	WASHER, FLAT USS 3/8 PLD	4	
5	10133	NUT, NYLOC 3/8-16	4	
6	19470	WASHER, FLAT 5/16 USS	6	
7	5283	NUT, NYLOC 5/16-18	6	
8	49583	BRACE, FRAME STEP	2	

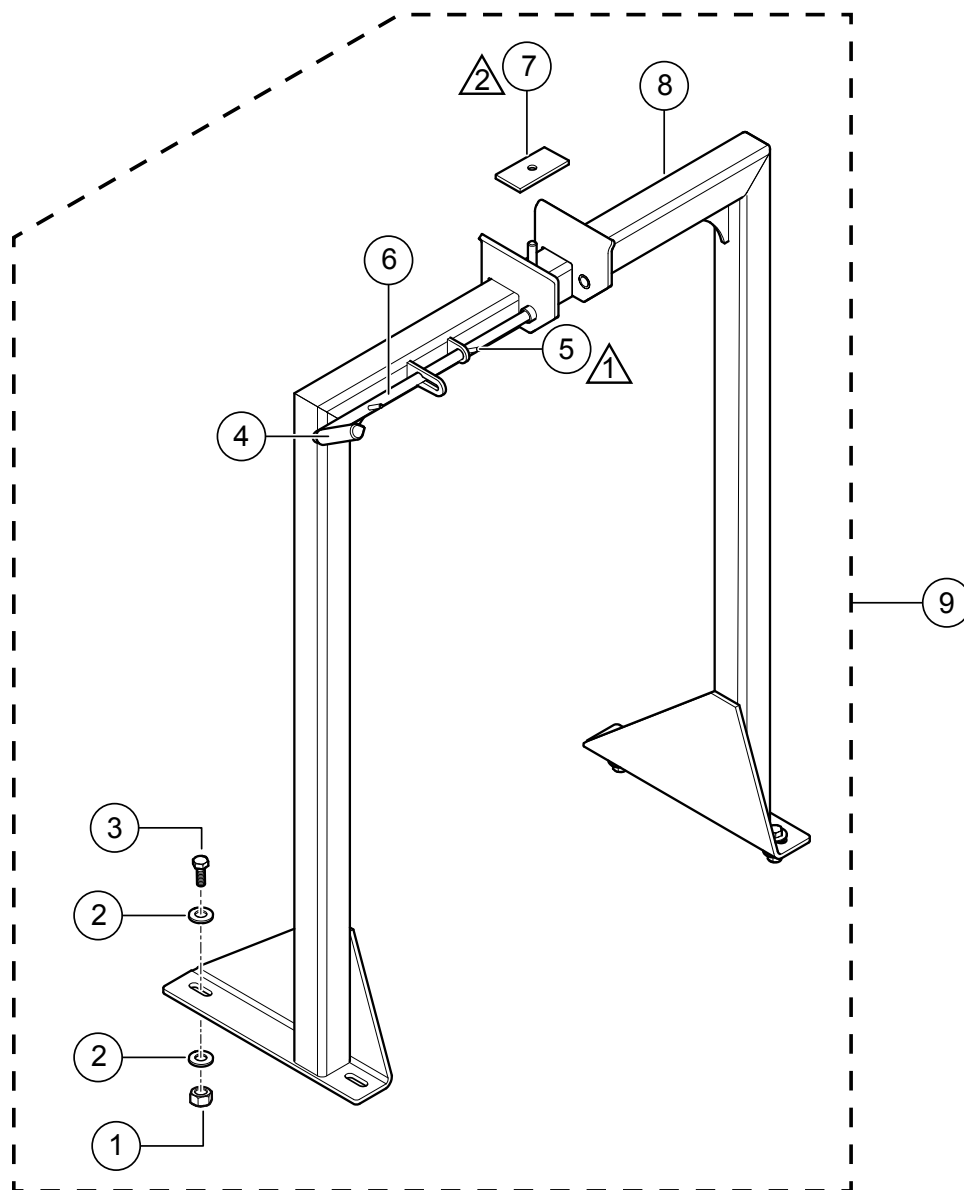
**STANCHION ASSY.**



## STANCHION ASSY.

<u>NO.</u>	<u>PART NO.</u>	<u>PART NAME</u>	<u>QTY.</u>	<u>REMARKS</u>
1\$	49751	STANCHION	1	
2\$	29077	SCREW, HHC 5/8-11 X 9.50	1	
3\$	29481	STOP MAST THRUST PLATE	1	
4\$	19989	SPRING, TOWER RETURN	1	
5\$	9503	NUT, NYLOC 5/8-11	1	
6\$	16526	SCREW, HHC 1/2-13 X 1-3/4 GRD 8	6	
7\$	13211	WASHER, FLAT 1/2 USS	12	
8\$	16629	NUT, NYLOC 1/2-13 GRD. 8	6	
9\$	19996	LANYARD	1	
10\$	19012	PIN, 5/16 X 2 QUICK RELEASE	1	
11\$	29482	SPRING, .468 OD X 2.13 CENTURY 4300	1	
12\$	20276	PIN, ROLL 1/4 X 1-3/4	1	
13\$	29033	MAST LOCK	1	
14\$	1450	WASHER, FLAT SAE #6	1	
15\$	0183	PIN, COTTER 1/8"D X 1-1/4"	2	
16\$	29155	SHEAVE, 2.00 OD X 0.500 ID	1	
17\$	19988	PIN, CLEVIS 1/2 X 1.75	1	
18	49565	STANCHION ASSY. ....	1.....	INCLUDES ITEMS W/\$

## REAR MAST SUPPORT ASSY.

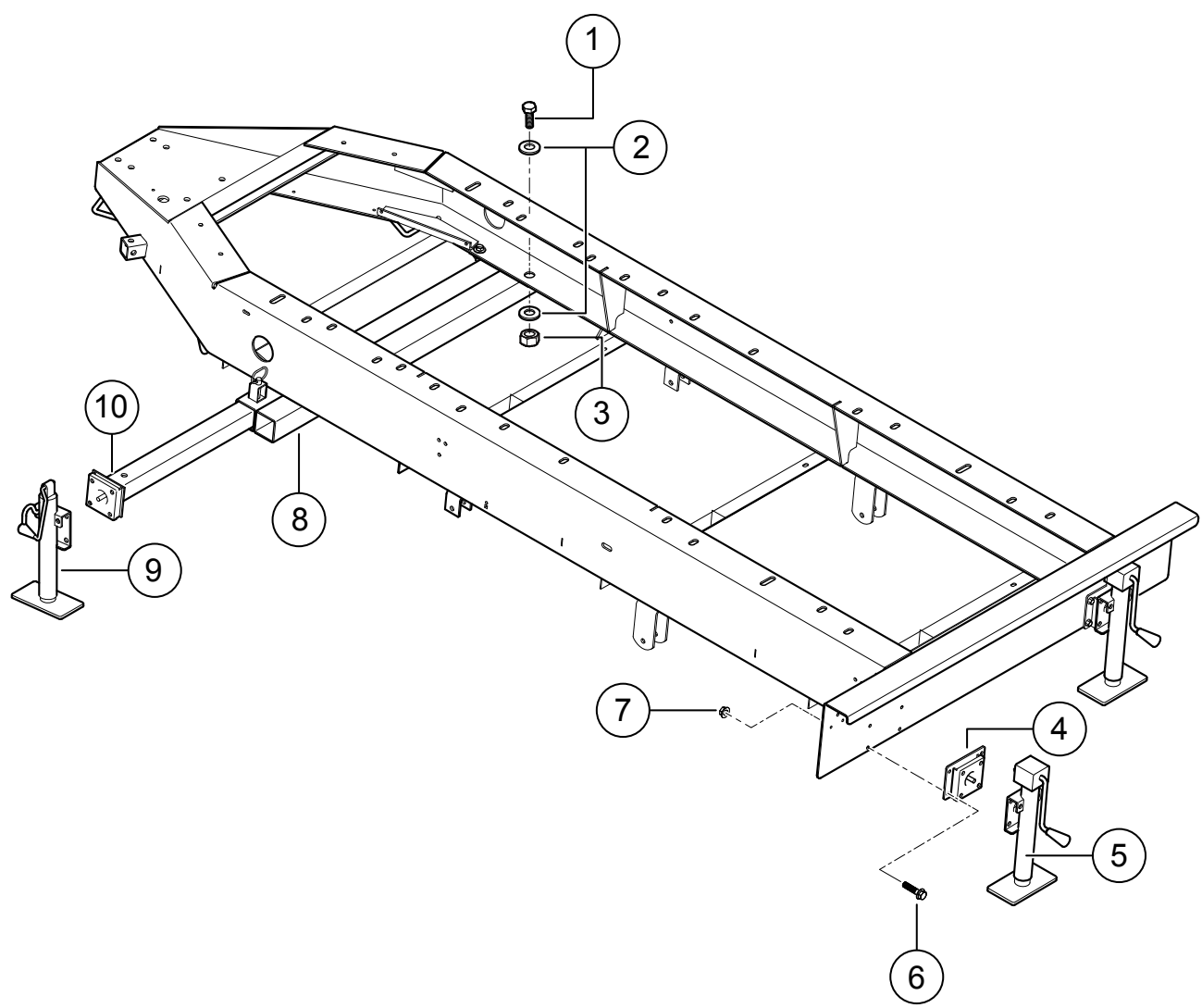


- NOTE:
- ① INSTALL PINS FLUSH TO SIDE OPPOSITE GRIP
  - ② ATTACH STOP WITH 3M 08008 OR EQUAL WEATHERSTRIP ADHESIVE.

## REAR MAST SUPPORT ASSY.

<u>NO.</u>	<u>PART NO.</u>	<u>PART NAME</u>	<u>QTY.</u>	<u>REMARKS</u>
1#	16629	NUT, NYLOC 1/2-13 GD 8	4	
2#	13211	WASHER, FLAT 1/2" USS	8	
3#	16526	SCREW, HHC 1/2-136 X 1-3/4" GRD. 8	4	
4#	19997	GRIP, HANDLE, 5/8" I.D. RED	1	
5#	20276	PIN, ROLL 1/4 X 1-3/4"	2	
6#	49577	ROD, MAST LOCK	1	
7#	29117	STOP, MAST SUPPORT	1	
8#	49557	SUPPORT, REAR MAST	1	
9	49600	SUPPORT ASSY., REAR TOWER.....	1.....	INCLUDES ITEMS W/#

# OUTRIGGER JACK ASSY.



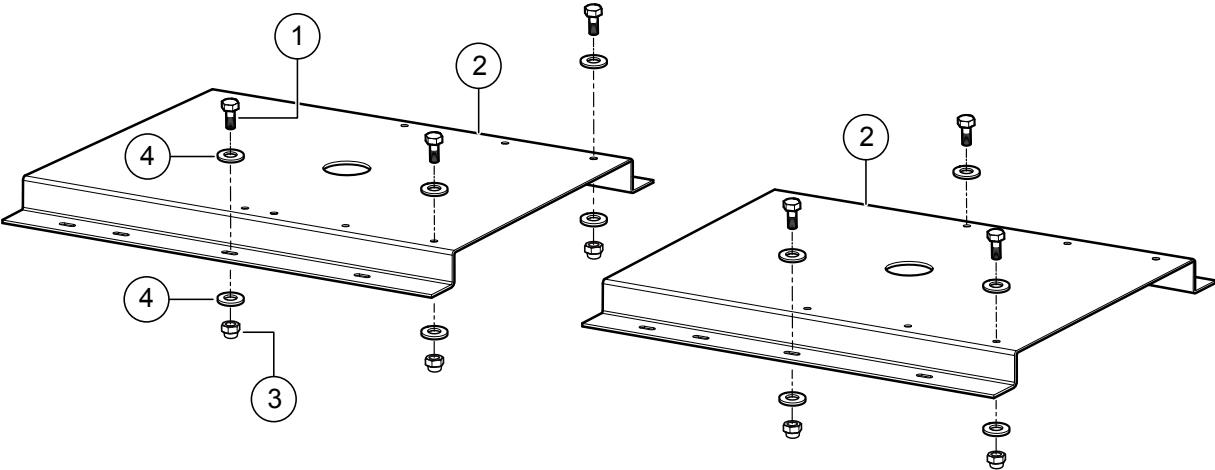
## OUTRIGGER JACK ASSY.

---

<u>NO.</u>	<u>PART NO.</u>	<u>PART NAME</u>	<u>QTY.</u>	<u>REMARKS</u>
1	5218	SCREW, HHC 1/2-13 X 1-1/2"	4	
2	13211	WASHER, FLAT 1/2" USS	8	
3	10176	NUT, NYLOC 1/2-13	4	
4	49581	REAR JACK MOUNTING PLATE	2	
5	29479	JACK, SIDEWIND 10" BOLT THRU 0.5: PIN	2	
6	22228	SCREW, HHF 3/8-16 X 1" GRD 8	8	
7	21781	NUT, FLANGED 3/8-16 SERRATED PLTD	8	
8	49574	OUTRIGGER MOUNT	1	
9	29478	JACK, TOPWIND 10" BOLT THRU .5" PIN	2	
10	49593	OUTRIGGER TUBE	2	

# MOUNTING PLATE ASSY.

---

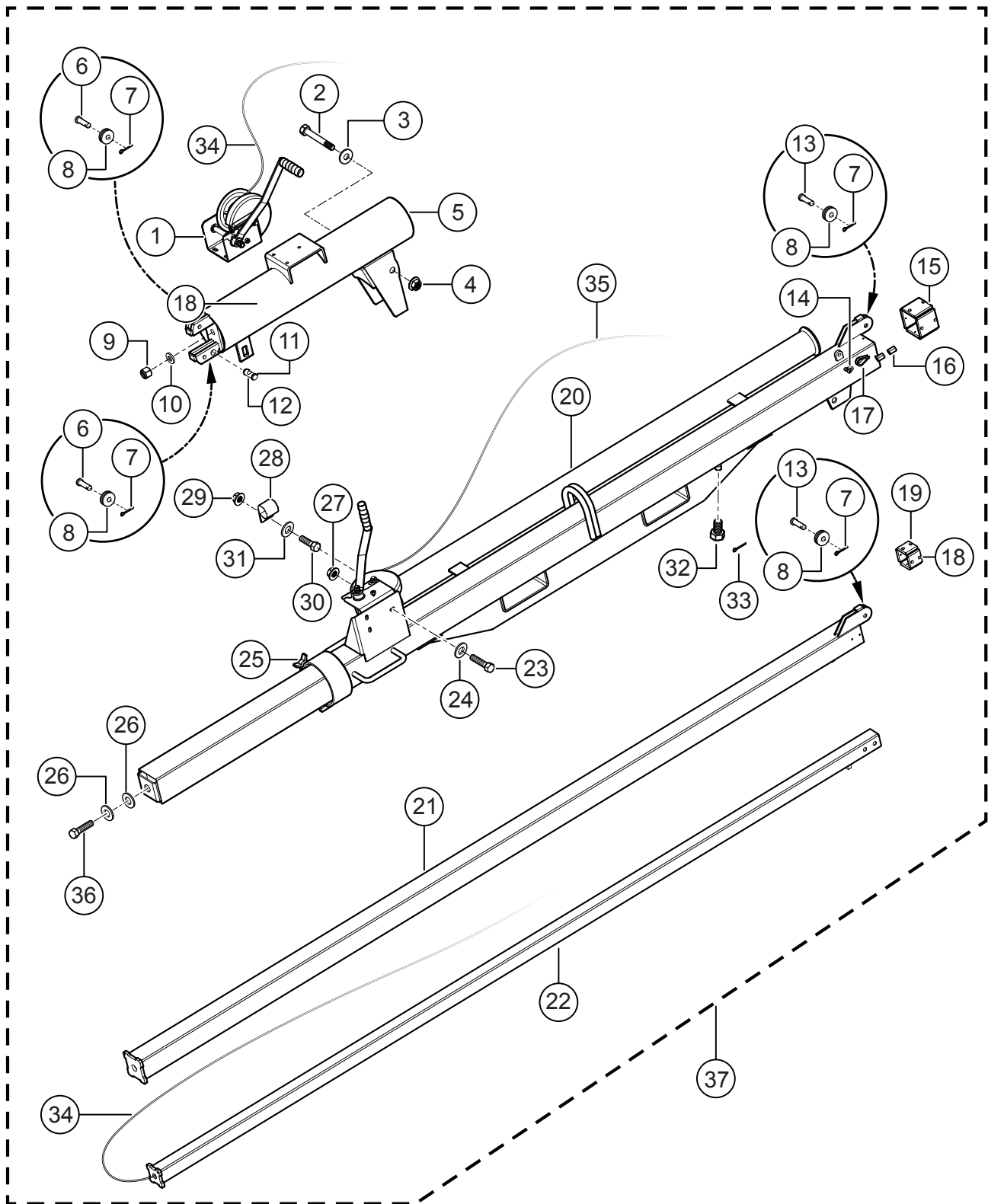




## **MOUNTING PLATE ASSY.**

---

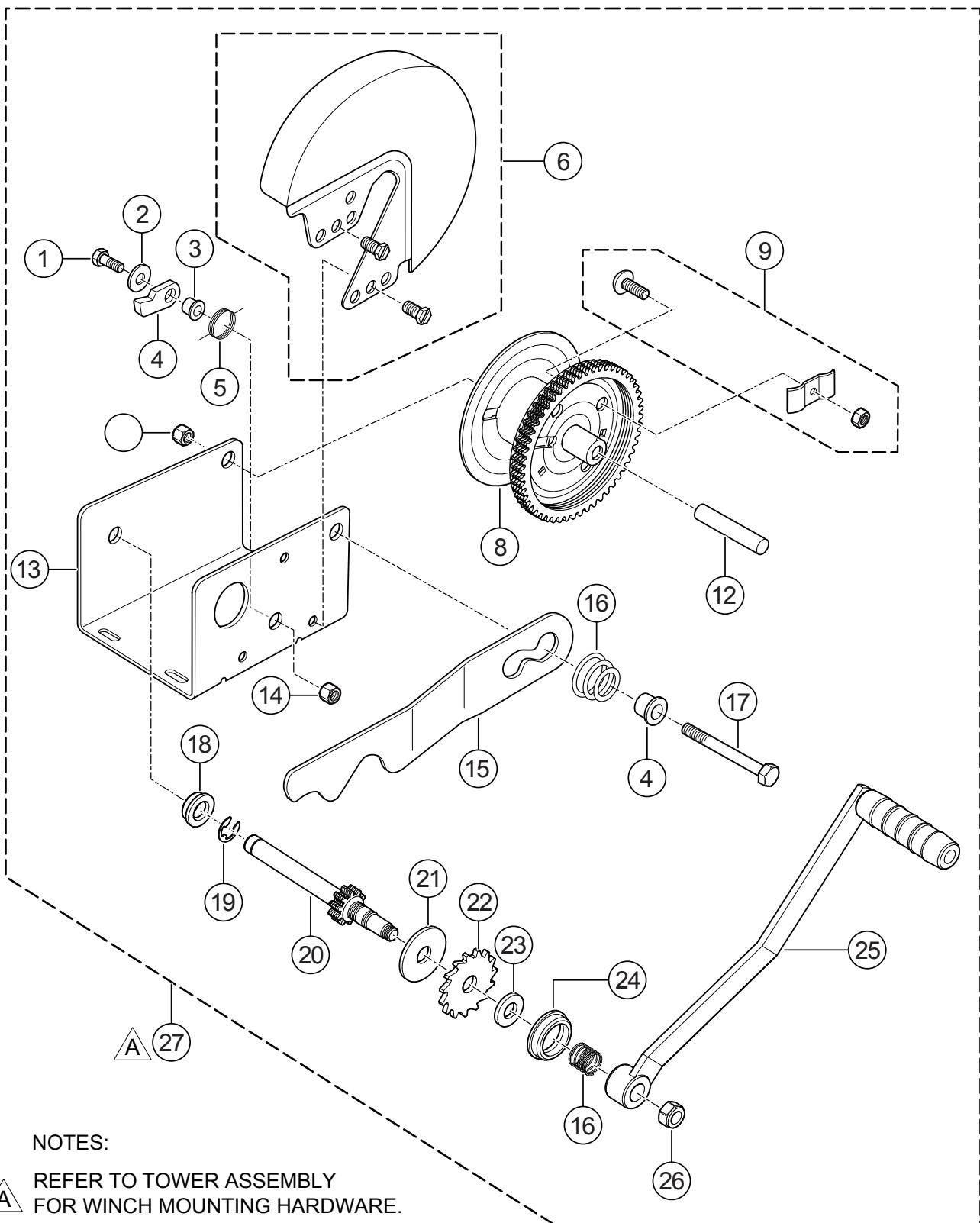
<b><u>NO.</u></b>	<b><u>PART NO.</u></b>	<b><u>PART NAME</u></b>	<b><u>QTY.</u></b>	<b><u>REMARKS</u></b>
1	16525	SCREW, HHC 1/2-13 X 1-1/2" GRD. 8	12	
2	49709	HAT, W/A,DCA 25 MOUNT	2	
3	16629	NUT, NYLOC 1/2-13 GRD. 8	12	
4	13211	WASHER, FLAT 1/2" USS	24	



## TOWER ASSY.

<u>NO.</u>	<u>PART NO.</u>	<u>PART NAME</u>	<u>QTY.</u>	<u>REMARKS</u>
1#	29790	WINCH, BRAKE, 1500LB DUTTON	2	
2#	19978	SCREW, HHC 3/4-10 X 6 1/2"	1	
3#	5079	WASHER, FLAT 3/4" USS	3	
4#	5070 B	NUT, NYLOC 3/4-10	1	
5#	49570	SWIVEL BASE	1	
6#	19988	PIN, CLEVIS 1/2 X 1.75"	2	
7#	0183	PIN, COTTER 1/8D X 1-1/4"	4	
8#	29155	PULLEY, 2.00" OD X 0.500" ID	4	
9#	5070 B	NUT, NYLOC 3/4-10	2	
10#	8151	WASHER, FLAT SAE 3/4"	2	
11#	1135	RING, SNAP, TRUARC # 5100-75	2	
12#	49590	PIN, SWAGE BALL SOCKET	1	
13#	19974	PIN, CLEVIS 1/2 X 1.25"	2	
14#	19975	SHACKLE, ANCHOR CP	1	
15	35300	BLOCK, MAST SLIDE, 3" X 3"	4	
16#	19973	SWAGE, AL 3/16"	2	
17#	19200	THIMBLE, 3/16" WIRE	1	
18#	19847	RIVET, POP, ALUM, 3/16" X 1/8"-1/4" GRIP	16	
19#	35302	BLOCK, MAST SLIDE, 2" X 2"	4	
20#	49587	MAST, BOTTOM TOWER	1	
21#	19920	MAST, CENTER TOWER	1	
22#	19923	MAST, TOP TOWER	1	
23#	1023	SCREW, HHC 3/8-16 X 1-1/4" GRD. 5	6	
24#	10136	WASHER, FLAT SAE 3/8"	6	
25#	19977	KNOB, CLAMP 1/2-13 THREAD	1	
26#	0948	WASHER, FLAT SAE 1/4"	2	
27#	21781	NUT, FLANGED 3/8-16 SERRATED PLTD	6	
28#	25646	CLAMP, HOSE 5/8 LOOP X .406	1	
29#	10024	NUT, NYLOC 1/4-20	1	
30#	0131 A	SCREW, HHC 1/4-20 X 3/4"	1	
31#	25334	WASHER, FLAT USS 1/4"	1	
32#	29075	SCREW, HHC 1/2-13 x 1" DRILLED	1	
33#	6014 B	PIN, COTTER 3/32DX1.00"	1	
34#	19938	CABLE, UPPER MAST 140"	2	
35#	19939	CABLE, UPPER MAST 231"	1	
36#	4387	SCREW, HHC 3/4-10 X 2-1/4"	1	
37	49588	TOWER ASSY.....	1.....	INCLUDES ITEMS W/#

# WINCH ASSY. (DUTTON-LAINSON)

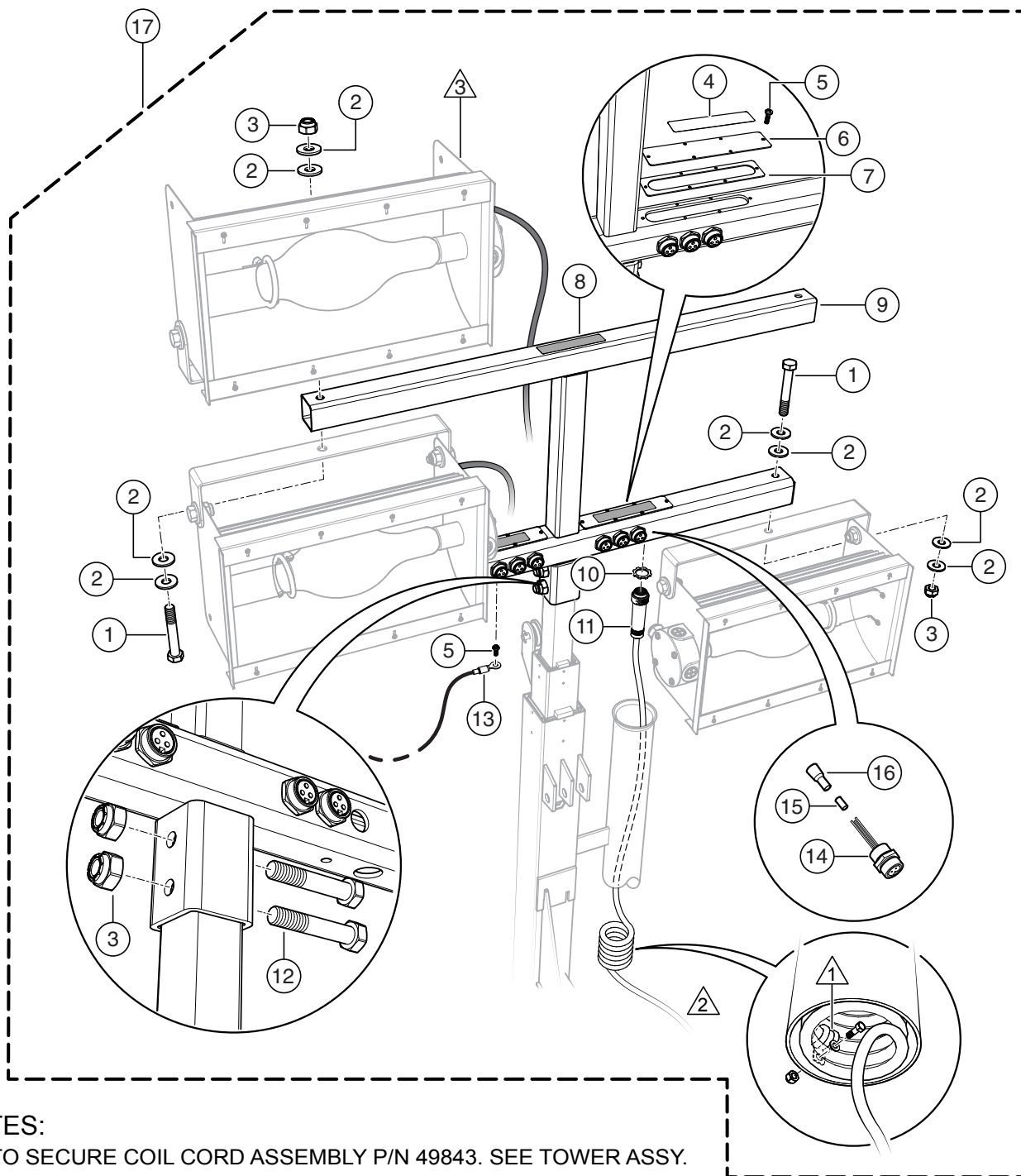


## NOTES:

**A** REFER TO TOWER ASSEMBLY  
FOR WINCH MOUNTING HARDWARE.

## WINCH ASSY. (DUTTON-LAINSON)

<u>NO.</u>	<u>PART NO.</u>	<u>PART NAME</u>	<u>QTY.</u>	<u>REMARKS</u>
1#	DL205167	BOLT	1	
2#	DL205055	WASHER	1	
3#	DL404409	PAWL	1	
4#	DL404166	SPACER	2	
5#	DL204363	SPRING	1	
6#	DL5240387	GEAR COVER, PAINTED BRONZE	1	
6#	DL5240403	GEAR COVER, PLATED	1	
8#	DL304755	REEL	1	
9#	DL304221	ROPE CLAMP KIT	1	
12#	DL204808	REEL SPACER	1	
13#	DL404891	BASE	1	
14#	DL204803	NUT	2	
15#	DL404579	LOCKOUT LEVER	1	
16#	DL204364	SPRING	2	
17#	DL205127	BOLT	1	
18#	DL204009	BUSHING	1	
19#	DL205116	E-RING	1	
20#	DL304760	DRIVE SHAFT	1	
21#	DL204362	PRESSURE PLATE	1	
22#	DL404164	RATCHET WHEEL	1	
23#	DL404163	PRESSURE WASHER	1	
24#	DL206328	BUSHING	1	
25#	29793	HANDLE	1	
26#	DL205033	NUT	1	
27	29790	WINCH ASSEMBLY 1500A D-L.....	1.....	INCLUDES ITEMS W/#

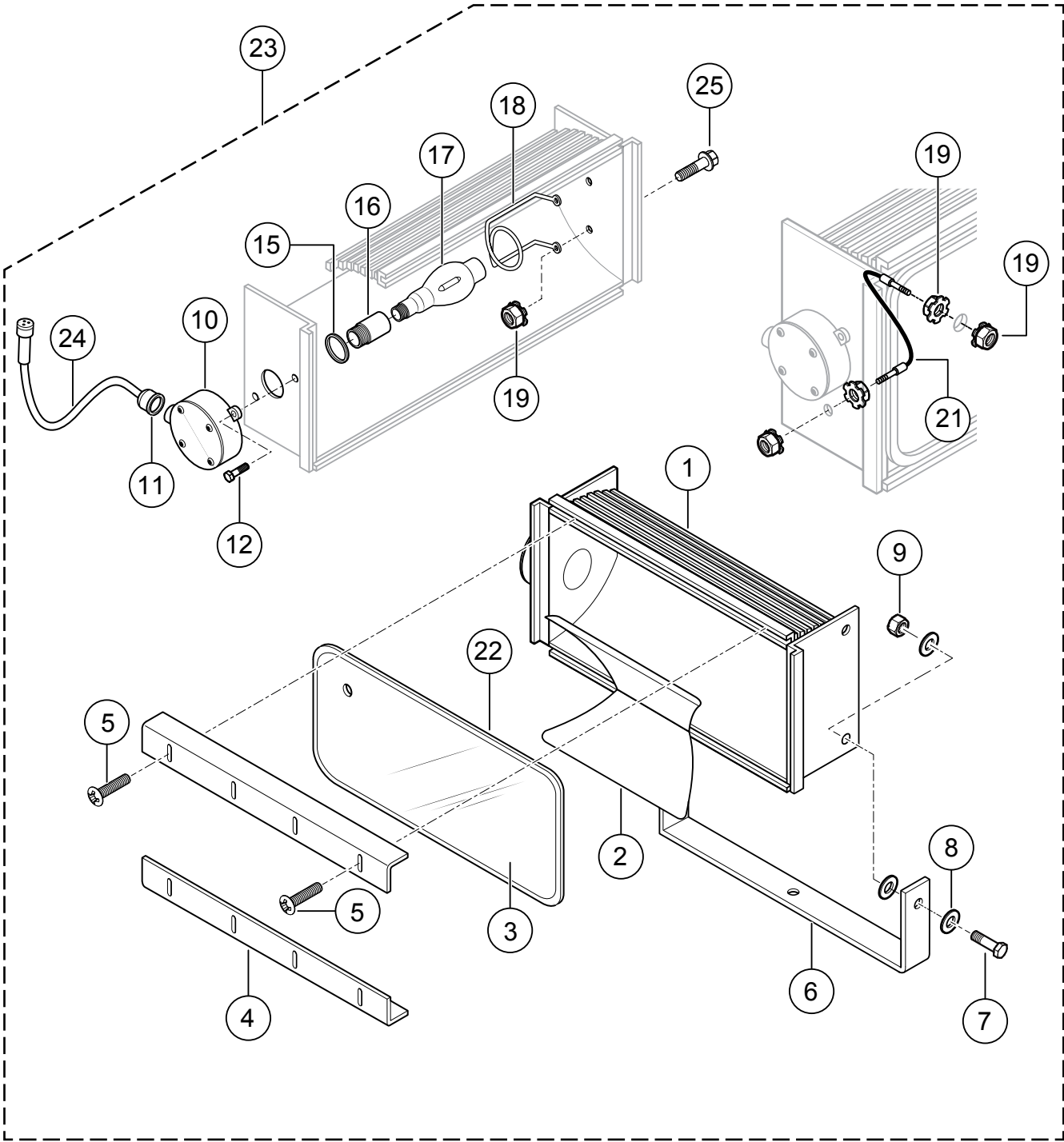


## NOTES:

- 1 TO SECURE COIL CORD ASSEMBLY P/N 49843. SEE TOWER ASSY.
- 2 CONNECT THIS END OF COIL CORD ASSEMBLY TO BALLAST BOX. SEE COIL CORD ASSY.
- 3 LAMPS NOT INCLUDED. SEE LAMP ASSY.

**T-BAR ASSY.**

<b><u>NO.</u></b>	<b><u>PART NO.</u></b>	<b><u>PART NAME</u></b>	<b><u>QTY.</u></b>	<b><u>REMARKS</u></b>
1\$	10306	SCREW, HHC 1/2-13 X 4-1/2	4	
2\$	13211	WASHER, FLAT 1/2" USS	14	
3\$	10176	NUT, NYLOC 1/2-13	6	
4\$	29047	DECAL, HIGH VOLTAGE	2	
5\$	29046	SCREW, PHPM 10-32 X 3/8", ZINC	13	
6\$	19945	PLATE, T-BAR WIRING COVER	2	
7\$	19944	GASKET, T BAR	2	
8\$	19972	REFLECTOR, RED, PETERSON #B491R	1	
9\$	49796	TEE-BAR, LIGHT MOUNT, MLT-6	1	
10\$	26560	NUT, LOCKING 3/4 NPT CONDUIT	1	
11\$	49813	CORD GRIP W/MESH, 3/4NPT .62-.75 CORD	1	
12\$	06503-026	SCREW, HHC 1/2-13 X 3-1/4"	2	
13\$	3254	TERMINAL, RING 16-14 3/8"	1	
14\$	29168	RECEPTACLE ASSY	6	
15\$	19687	CRIMP, SLEEVE (30-410)	11	
16\$	19688	INSULATOR, SPLICE CAP (2007)	11	
17	49721	T-BAR ASSY., 6 LITE .....	1.....	INCLUDES ITEMS W/\$

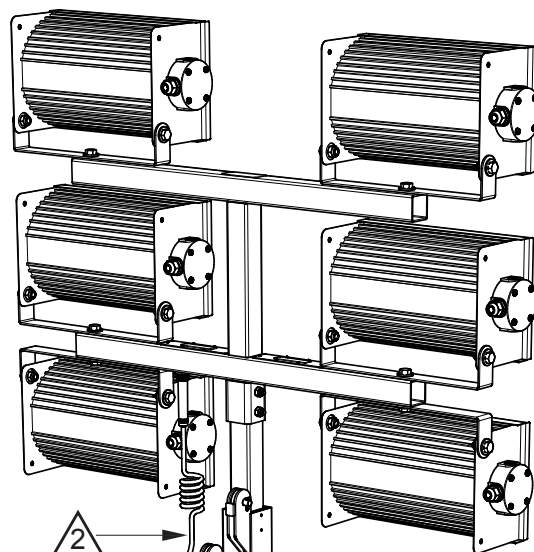
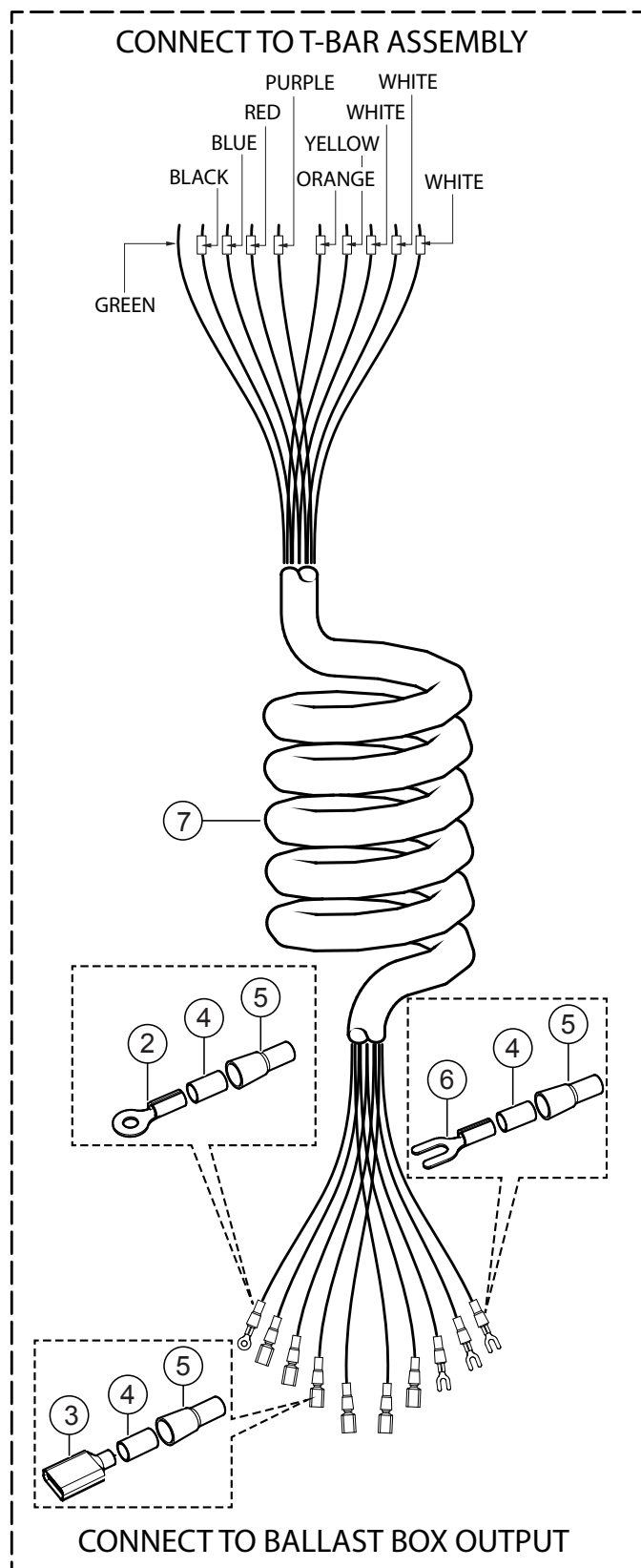




## LAMP ASSY.

<u>NO.</u>	<u>PART NO.</u>	<u>PART NAME</u>	<u>QTY.</u>	<u>REMARKS</u>
1%	20S-REF-1	REF1000 BODY ASSY.	1	
2%	30M-REF-REF	REFLECTOR, ALUM 14-7/8 X 16-5/8 IN.	1	
3%	190ZQREF	REF 1000 LENS 190ZQREF	1	
4%	170M-REF-5	REF LENS HOLD DOWN	2	
5%	70Z-FSCR3	SCREW 8-32 X 1/2 IN.	8	
6%	250-REF-6	YOKE, LIGHT FIXTURE	1	
7%	260Z-FSCR9	BOLT, HEX HEAD 1/2-13 x 1-1/2 IN.	2	
8%	280Z-FWFL2	WASHER, FLAT 1/2 IN.	4	
9%	270Z-FNT4	NUT, HEX 1/2-13 IN.	2	
10%	Z-C-239	VAPORTITE OCTAGON BOX 1/2 IN.	1	
11%	150Z-FSR3	STRAIN RELIEF SRW 1/2 IN. BLACK	1	
12%	Z-FSCR9	BOLT, HEX HEAD ZINC PLATED	2	
15%	90Z-G-102	GASKET, HEX #5 OR #6	1	
16%	70Z-SK65	MOGUL SOCKET W/ANTI-VIB. GASKET	1	
17%	MVR1000BT37	BULB, LIGHT FIXTURE	1	
18%	50Z-D-REF-SUP	SUPPORT, REF1000 LAMP TIP	1	
19%	230Z-FNTL6-1	KEEP NUT 8-32	6	
21%	210S-CBL-6	CABLE ASSEMBLY	1	
22%	200ZG106	GASKET, U-CHANNEL REFLECTOR	1	
23	29773	LIGHT FIXTURE ASSY.....	1.....	INCLUDES ITEMS W/%
24%	150Z-EZ67	POWER CORD, 60" W/ 3-PIN MALE PLUG	1	
25%	4106781000	SCREW, 8-32 X 3/8	2	

## COIL CORD ASSY.



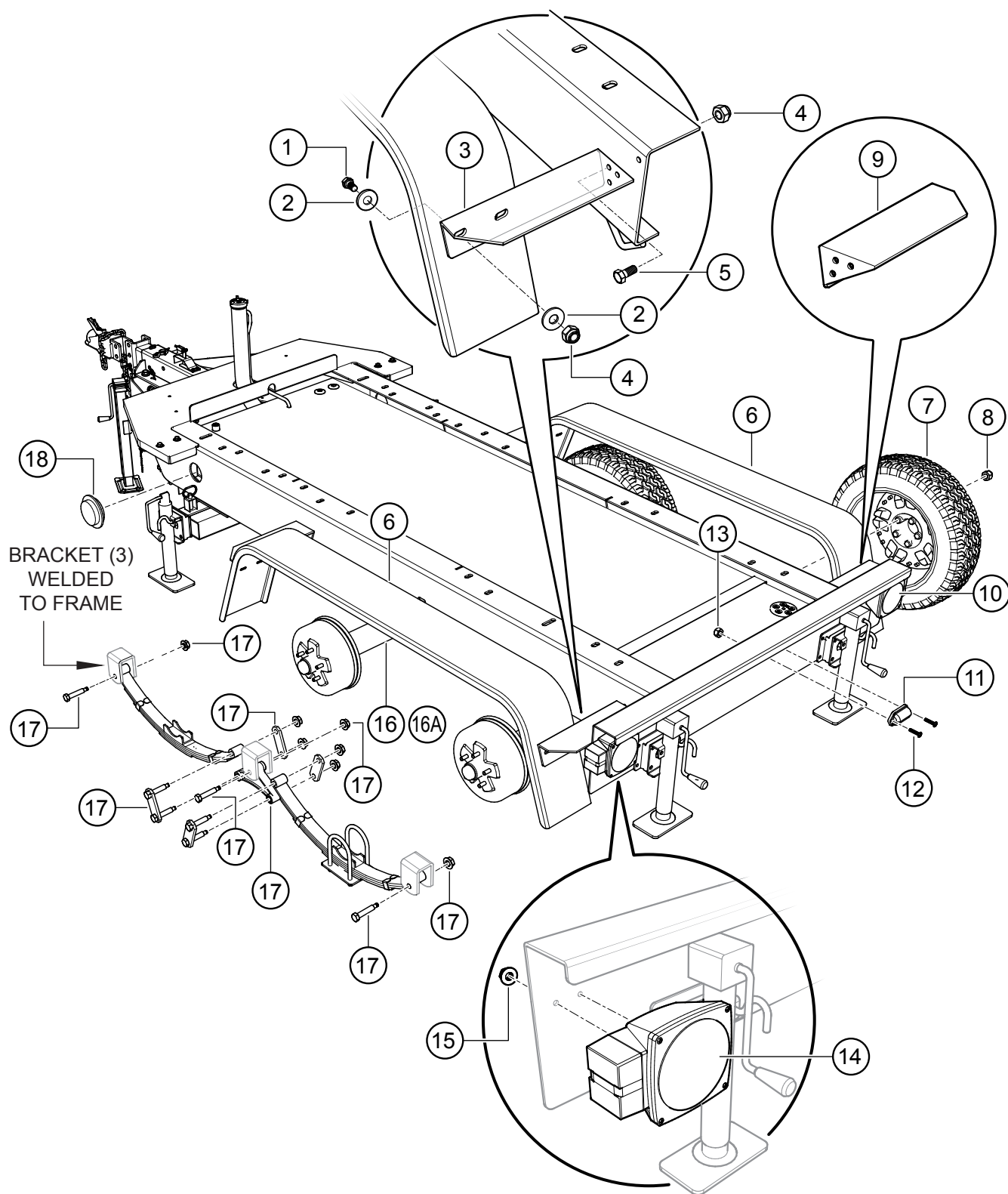
1 CONNECT THIS END OF COIL CORD ASSY. TO BALLAST BOX. REFERENCE ELECTRICAL SCHEMATIC DIAGRAM IN OPERATION MANUAL.

2 CONNECT THIS END OF COIL CORD ASSY. TO T-BAR ASSY. REFERENCE ELECTRICAL SCHEMATIC IN OPERATION MANUAL.

## COIL CORD ASSY.

---

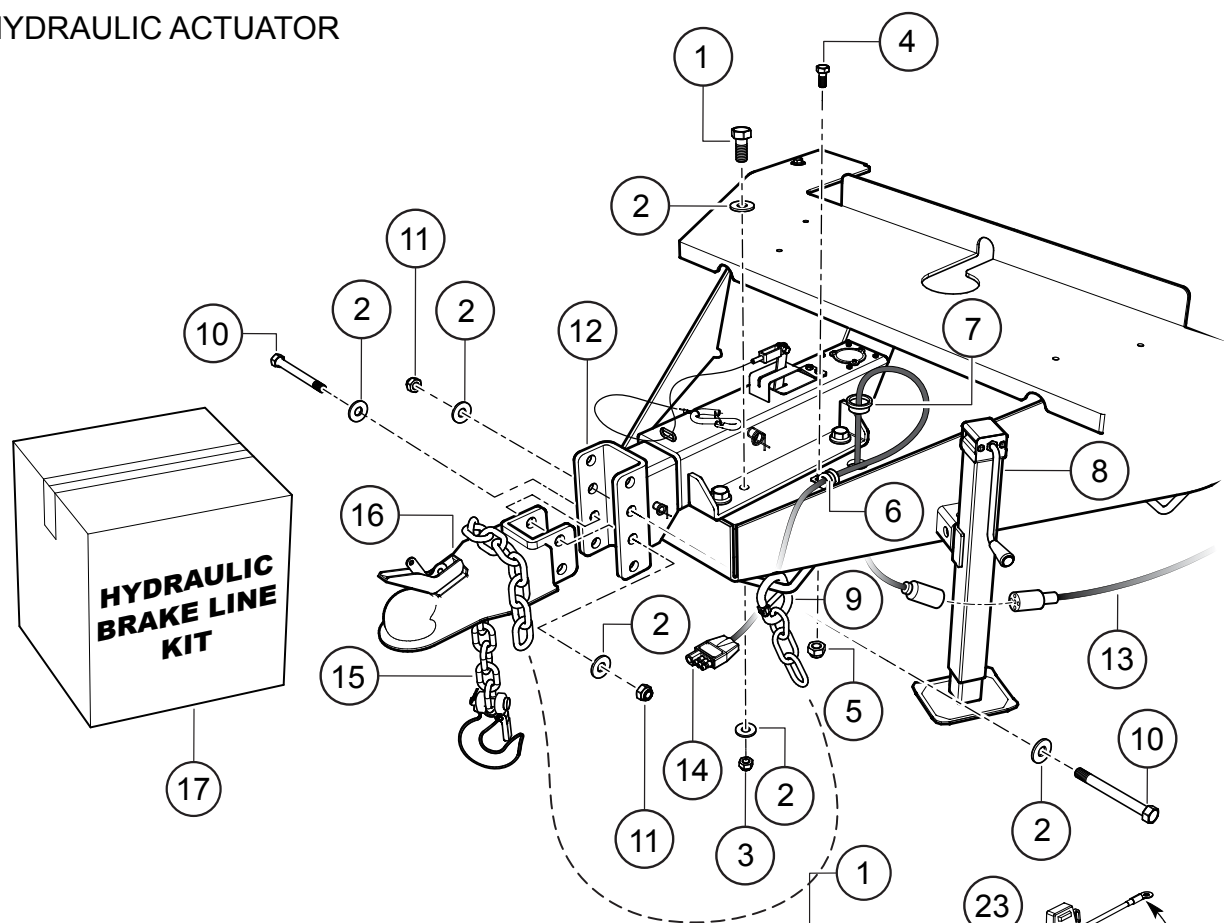
<u>NO.</u>	<u>PART NO.</u>	<u>PART NAME</u>	<u>QTY.</u>	<u>REMARKS</u>
1	49843	COIL CORD ASSY.....	1.....	INCLUDES ITEMS W/#
2#	3254	TERMINAL, RING 16-14 3/8"	1	
3#	11947	TERMINAL, FEM 16-14 PUSH-ON, INS	6	
4#	19687	CRIMP, SLEEVE	10	
5#	19688	INSULATOR, SPLICE CAP	10	
6#	19957	TERMINAL, SPADE 16-14	3	
7#	49609	COIL CORD, 600V, 10-WIRE	1	



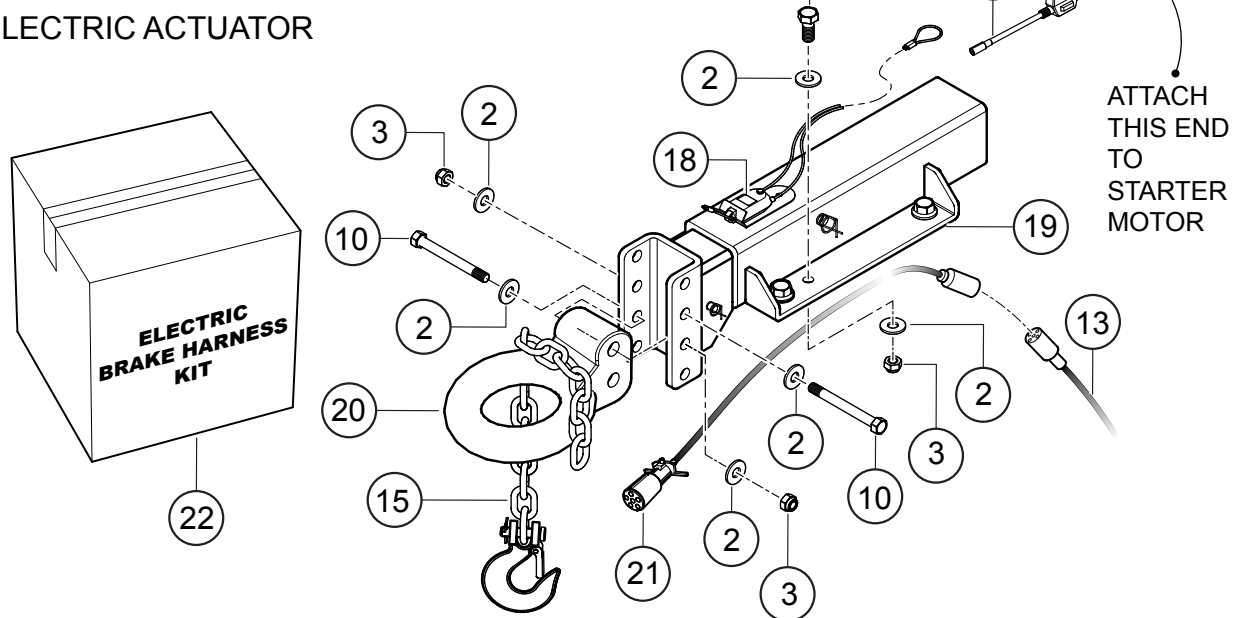
## TRAILER ASSY.

<u>NO.</u>	<u>PART NO.</u>	<u>PART NAME</u>	<u>QTY.</u>	<u>REMARKS</u>
1	0205	SCREW, HHC 3/8-16 X 1"	8	
2	4001	WASHER, FLAT USS 3/8" PLD	16	
3	49107	BRACKET, RF/LR FENDER MTG.	2	
4	10133	NUT, NYLOC 3/8-16	20	
5	1023	SCREW, HHC 3/8-16 X 1-1/4" GRD 5	12	
6	EE56139	FENDER, TANDEM 8" X 14" X 16-1/4"	2	
7	EE40139	WHEEL ASSY., 6 PLIES, ST205/75D15", C	4	
8	29194	NUT, LUG 1/2-20	20	
9	49105	BRACKET, LF/RR FENDER MTG.	2	
10	EE34256	LIGHT, REAR RIGHT (CURB SIDE).....	1.....	INCLUDES ITEM W/%
11	EE43536	LIGHT, LICENSE	1	
12	22263	SCREW, FHM 8-32 X 3/4"	2	
13	13287	NUT, NYLOC 8-32	2	
14	EE34257	LIGHT, REAR LEFT (STREET SIDE).....	1.....	INCLUDES ITEM W/%
15%	49070	NUT, FLANGED 1/4-20 SERRATED PLTD	4	
16	EE55994	AXLE, HYD BRKS, 3.5K SPG SUP DEXTER	1	
16A	EE55975	AXLE, ELEC BRKS, 3.5K SPG SUP DEXTER	1	
17	EE55997	KIT, SPRING MOUNTING	1	
18	EE43535	LIGHT, 2.5" CLRANCE/SIDE MARK. W/REFL.	2	

## HYDRAULIC ACTUATOR



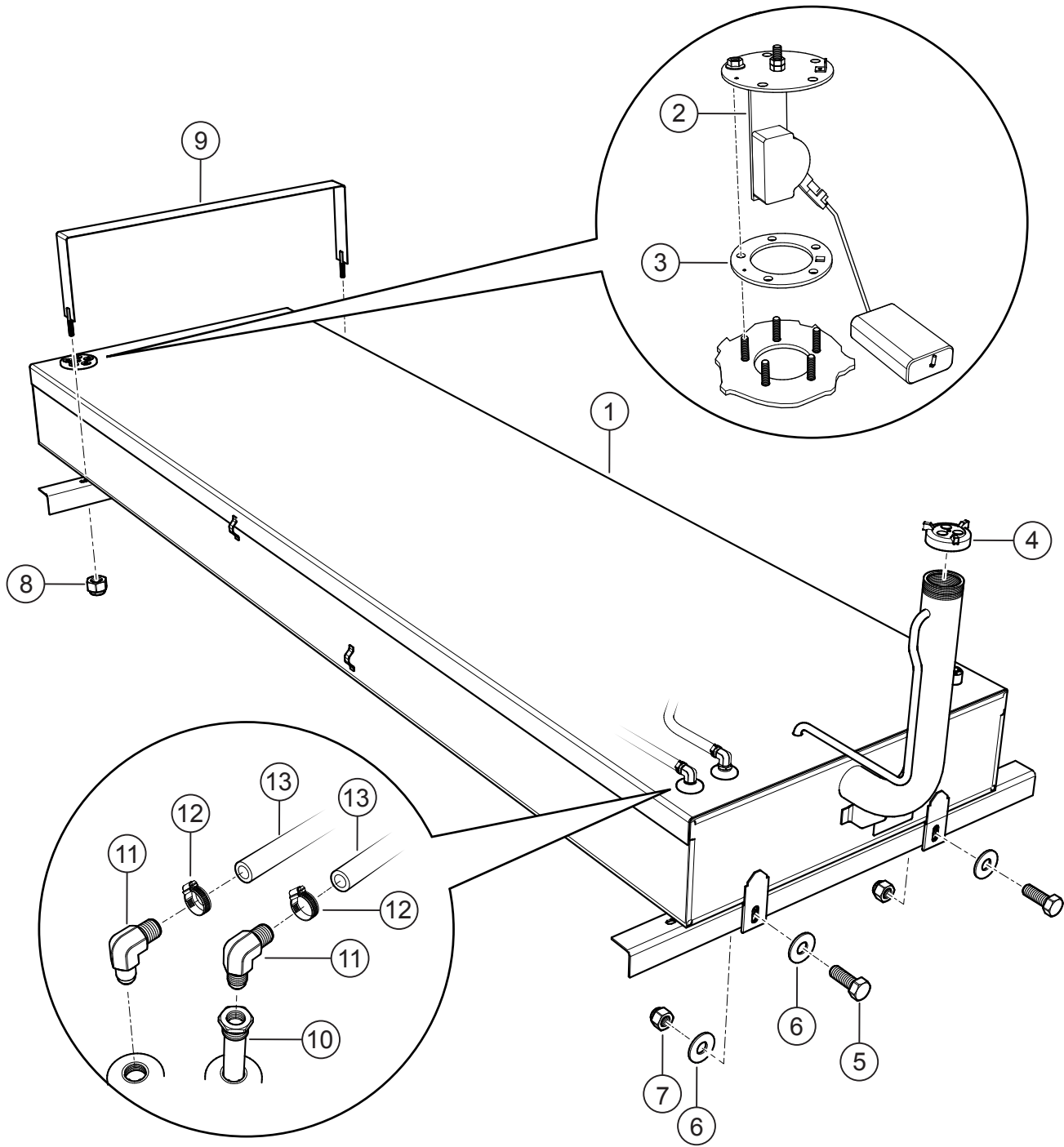
## ELECTRIC ACTUATOR



## ACTUATOR ASSY.

<u>NO.</u>	<u>PART NO.</u>	<u>PART NAME</u>	<u>QTY.</u>	<u>REMARKS</u>
1	EE43524	BOLT, HEX CAP, 5/8-18 X 2" GRD 8	6	
2	933246	WASHER, FLAT SAE 5/8" GRD 9 YZ	16	
3	EE43528	NUT, HEX NYLON-INSERT LOCK, GRD 8	6	
4	49048	SCREW, HHFS 1/4-20 X 3/4" GRD 5	1	
5	49070	NUT, FLANGED 1/4-20 SERRATED PLTD	1	
6	8128	CLAMP, HOSE 5/16" LOOP X .406 HOLE	1	
7	EE46345	BUSHING, SNAP, 1-1/4" O.D. W/ 15-16" I.D.	1	
8	EE53708	JACK, SQUARE TUBE, SIDEWINDER, 3K	1	
9	EE44113	LINK, HAMMERLOK COUPLING	2	
10	EE44418	CAP SCREW, HEX HD, PART/THREAD, 5"	2	
11	EE44419	NUT, HEX NYLON-INSERT LOCK, GRD 8	2	
12	EE43077	ACTUATOR, HYDR., 8K, PRIM'D CHANEL	1	
13	EE55105	HARNESS, REAR, TRLR.	1	
14	EE55277	HARNESS, 4-POLE LEAD (76") HYD BRKS	1	
15	EE43513	CHAIN, TRANSPORT W/HOOK 3/8" x 42"L	2	
16		COUPLER, BALL.....	1.....	CONTACT UNIT SALES
17	EE56369	KIT, BRAKE LINE, TAND SPRG AXLE, HYD.	1	
18	EE43519	KIT, BREAKAWAY, WESBAR ELECTRIC	1	
19	EE43542	ADAPTER, FRAME, ELEC., DROP DOWN	1	
20		PINTLE EYE, RING, 3" 20,000#.....	1.....	CONTACT UNIT SALES
21	EE55276	HARNESS, 6-POLE LEAD FOR ELEC BRKS	1	
22	EE55278	KIT, ELECTRIC BRAKE HARNESS	1	
23	EE50651	ATO FUSE IN-LINE HOLDER W/COVER	1	

**FUEL TANK ASSY.**





## FUEL TANK ASSY.

<u>NO.</u>	<u>PART NO.</u>	<u>PART NAME</u>	<u>QTY.</u>	<u>REMARKS</u>
1	EE51793	FUEL TANK ASSY., 100 GAL.	1	
2	EE56760	FUEL SENDER, 2-5/8" SU 8.375" 240 OHM	1	
3	EE56758	GASKET, 2-5/8" SENDING UNIT	1	
4	7V3177002	CAP, 2" FUEL TANK	1	
5	16525	SCREW, HHC 1/2-13 X 1-1/2 GRD. 8	2	
6	13211	WASHER, FLAT USS 1/2"	4	
7	10176	NUT, NYLOC 1/2-13	2	
8	10133	NUT, NYLOC 3/8-16	2	
9	49132	STRAP, FUEL TANK	1	
10	EE55903	ASSY., TUBE, FUEL DOWN, 7-3/4" LONG	1	
11	17206	FITTING, 90° 5BARB-1/4MP	2	
12	19473	CLAMP, HOSE WORM #2, 1/4" TO 5/8"	4	
13	60028	HOSE, FUEL .312 D 50PSI LOW PERM.....AR.....	1PC = 1FT	

# TERMS AND CONDITIONS OF SALE — PARTS

## PAYMENT TERMS

Terms of payment for parts are net 30 days.

## FREIGHT POLICY

All parts orders will be shipped collect or prepaid with the charges added to the invoice. All shipments are F.O.B. point of origin. Multiquip's responsibility ceases when a signed manifest has been obtained from the carrier, and any claim for shortage or damage must be settled between the consignee and the carrier.

## MINIMUM ORDER

The minimum charge for orders from Multiquip is \$15.00 net. Customers will be asked for instructions regarding handling of orders not meeting this requirement.

## RETURNED GOODS POLICY

Return shipments will be accepted and credit will be allowed, subject to the following provisions:

1. A Returned Material Authorization must be approved by Multiquip prior to shipment.
2. To obtain a Return Material Authorization, a list must be provided to Multiquip Parts Sales that defines item numbers, quantities, and descriptions of the items to be returned.
  - a. The parts numbers and descriptions must match the current parts price list.
  - b. The list must be typed or computer generated.
  - c. The list must state the reason(s) for the return.
  - d. The list must reference the sales order(s) or invoice(s) under which the items were originally purchased.
  - e. The list must include the name and phone number of the person requesting the RMA.
3. A copy of the Return Material Authorization must accompany the return shipment.
4. Freight is at the sender's expense. All parts must be returned freight prepaid to Multiquip's designated receiving point.

5. Parts must be in new and resalable condition, in the original Multiquip package (if any), and with Multiquip part numbers clearly marked.
6. The following items are not returnable:
  - a. Obsolete parts. (If an item is in the price book and shows as being replaced by another item, it is obsolete.)
  - b. Any parts with a limited shelf life (such as gaskets, seals, "O" rings, and other rubber parts) that were purchased more than six months prior to the return date.
  - c. Any line item with an extended dealer net price of less than \$5.00.
  - d. Special order items.
  - e. Electrical components.
  - f. Paint, chemicals, and lubricants.
  - g. Decals and paper products.
  - h. Items purchased in kits.
7. The sender will be notified of any material received that is not acceptable.
8. Such material will be held for five working days from notification, pending instructions. If a reply is not received within five days, the material will be returned to the sender at his expense.
9. Credit on returned parts will be issued at dealer net price at time of the original purchase, less a 15% restocking charge.
10. In cases where an item is accepted, for which the original purchase document can not be determined, the price will be based on the list price that was effective twelve months prior to the RMA date.
11. Credit issued will be applied to future purchases only.

## PRICING AND REBATES

Prices are subject to change without prior notice. Price changes are effective on a specific date and all orders received on or after that date will be billed at the revised price. Rebates for price declines and added charges for price increases will not be made for stock on hand at the time of any price change.

Multiquip reserves the right to quote and sell direct to Government agencies, and to Original Equipment Manufacturer accounts who use our products as integral parts of their own products.

## SPECIAL EXPEDITING SERVICE

A \$35.00 surcharge will be added to the invoice for special handling including bus shipments, insured parcel post or in cases where Multiquip must personally deliver the parts to the carrier.

## LIMITATIONS OF SELLER'S LIABILITY

Multiquip shall not be liable hereunder for damages in excess of the purchase price of the item with respect to which damages are claimed, and in no event shall Multiquip be liable for loss of profit or good will or for any other special, consequential or incidental damages.

## LIMITATION OF WARRANTIES

No warranties, express or implied, are made in connection with the sale of parts or trade accessories nor as to any engine not manufactured by Multiquip. Such warranties made in connection with the sale of new, complete units are made exclusively by a statement of warranty packaged with such units, and Multiquip neither assumes nor authorizes any person to assume for it any other obligation or liability whatever in connection with the sale of its products. Apart from such written statement of warranty, there are no warranties, express, implied or statutory, which extend beyond the description of the products on the face hereof.

Effective: February 22, 2006



# PARTS MANUAL

## HERE'S HOW TO GET HELP

PLEASE HAVE THE MODEL AND SERIAL  
NUMBER ON-HAND WHEN CALLING

### UNITED STATES

#### ***Multiquip Corporate Office***

18910 Wilmington Ave. Tel. (800) 421-1244  
Carson, CA 90746 Fax (310) 537-3927  
Contact: mq@multiquip.com

#### ***Service Department***

800-421-1244 Fax: 310-537-4259  
310-537-3700

#### ***Technical Assistance***

800-478-1244 Fax: 310-943-2238

#### ***MQ Parts Department***

800-427-1244 Fax: 800-672-7877  
310-537-3700 Fax: 310-637-3284

#### ***Warranty Department***

800-421-1244 Fax: 310-943-2249  
310-537-3700

---

### CANADA

#### ***Multiquip***

4110 Industriel Boul. Tel: (450) 625-2244  
Laval, Quebec, Canada H7L 6V3 Tel: (877) 963-4411  
Contact: jmartin@multiquip.com Fax: (450) 625-8664

---

### UNITED KINGDOM

#### ***Multiquip (UK) Limited Head Office***

Unit 2, Northpoint Industrial Estate, Tel: 0161 339 2223  
Globe Lane, Fax: 0161 339 3226  
Dukinfield, Cheshire SK16 4UJ  
Contact: sales@multiquip.co.uk

© COPYRIGHT 2015, MULTIQUIP INC.

Multiquip Inc, the MQ logo are registered trademarks of Multiquip Inc. and may not be used, reproduced, or altered without written permission. All other trademarks are the property of their respective owners and used with permission.

This manual MUST accompany the equipment at all times. This manual is considered a permanent part of the equipment and should remain with the unit if resold.

The information and specifications included in this publication were in effect at the time of approval for printing. Illustrations, descriptions, references and technical data contained in this manual are for guidance only and may not be considered as binding. Multiquip Inc. reserves the right to discontinue or change specifications, design or the information published in this publication at any time without notice and without incurring any obligations.

Your Local Dealer is:



**PN: 49809**