

PARTS MANUAL



 **WHITEMAN** SERIES

MODELS

PRO36

PRO46

WALK-BEHIND TROWELS

**(HONDA GX270UT2QA2/GX340UT2QA2/
GX340UT2QAP2 GASOLINE ENGINES)**

Revision #0 (09/21/17)

Original Version

To find the latest revision of this
publication, visit our website at:
www.multiquip.com



THIS MANUAL MUST ACCOMPANY THE EQUIPMENT AT ALL TIMES.

PN: 13408

PRO36/PRO46 WALK-BEHIND TROWEL

Table Of Contents.....	2
Parts Ordering Procedures.....	3
Explanation Of Code In Remarks Column.....	4
Suggested Spare Parts	5

Component Drawings

Nameplate And Decals.....	6-7
Standard Handle Assy.	8-13
Fresno Winch Assy.	14-15
Guard Ring And Engine Mounting Assy.....	16-17
Fresno Boom Assy.....	18-19
Brush To Fresno Kit	20-21
Stabilizer Ring Assy.	22-23
Gearbox Assy.....	24-25
Engine And Clutch Assy.....	26-27
Spider Assy.....	28-29
Blades And Pan Assy.....	30-31
Engine Service Parts.....	32-33

Terms And Conditions Of Sale — Parts	34
--	----

NOTICE

Specifications and part numbers are subject to change without notice.

PARTS ORDERING PROCEDURES

www.multiquip.com

Ordering parts has never been easier! Choose from three easy options:

Effective:
January 1st, 2006



Order via Internet (Dealers Only):

Order parts on-line using Multiquip's SmartEquip website!

- View Parts Diagrams
- Order Parts
- Print Specification Information



If you have an MQ Account, to obtain a Username and Password, E-mail us at: parts@multiquip.com.

To obtain an MQ Account, contact your District Sales Manager for more information.

Goto www.multiquip.com and click on **Order Parts** to log in and save!

Use the **internet** and qualify for a **5% Discount** on *Standard orders* for all orders which include complete part numbers.*

Note: Discounts Are Subject To Change



Order via Fax (Dealers Only):

All customers are welcome to order parts via Fax.

Domestic (US) Customers dial:
1-800-6-PARTS-7 (800-672-7877)

Fax your order in and qualify for a **2% Discount** on *Standard orders* for all orders which include complete part numbers.*

Note: Discounts Are Subject To Change



Order via Phone: Domestic (US) Dealers Call:
1-800-427-1244

Non-Dealer Customers:

Contact your local Multiquip Dealer for parts or call 800-427-1244 for help in locating a dealer near you.



International Customers should contact their local Multiquip Representatives for Parts Ordering information.

When ordering parts, please supply:

- | | |
|---|--|
| <input type="checkbox"/> Dealer Account Number | <input type="checkbox"/> Specify Preferred Method of Shipment: |
| <input type="checkbox"/> Dealer Name and Address | <input checked="" type="checkbox"/> UPS/Fed Ex <input checked="" type="checkbox"/> DHL |
| <input type="checkbox"/> Shipping Address (if different than billing address) | <input type="checkbox"/> Priority One <input checked="" type="checkbox"/> Truck |
| <input type="checkbox"/> Return Fax Number | <input type="checkbox"/> Ground |
| <input type="checkbox"/> Applicable Model Number | <input type="checkbox"/> Next Day |
| <input type="checkbox"/> Quantity, Part Number and Description of Each Part | <input type="checkbox"/> Second/Third Day |

NOTICE

All orders are treated as *Standard Orders* and will ship the same day if received prior to 3PM PST.

WE ACCEPT ALL MAJOR CREDIT CARDS!



EXPLANATION OF CODE IN REMARKS COLUMN

The following section explains the different symbols and remarks used in the Parts section of this manual. Use the help numbers found on the back page of the manual if there are any questions.

NOTICE

The contents and part numbers listed in the parts section are subject to change **without notice**. Multiquip does not guarantee the availability of the parts listed.

SAMPLE PARTS LIST

NO.	PART NO.	PART NAME	QTY.	REMARKS
1	12345	BOLT	1	INCLUDES ITEMS W/%
2%		WASHER, 1/4 IN.		NOT SOLD SEPARATELY
2%	12347	WASHER, 3/8 IN. ...	1	MQ-45T ONLY
3	12348	HOSE	A/R	MAKE LOCALLY
4	12349	BEARING	1	S/N 2345B AND ABOVE

NO. Column

Unique Symbols — All items with same unique symbol (@, #, +, %, or >) in the number column belong to the same assembly or kit, which is indicated by a note in the “Remarks” column.

Duplicate Item Numbers — Duplicate numbers indicate multiple part numbers, which are in effect for the same general item, such as different size saw blade guards in use or a part that has been updated on newer versions of the same machine.

NOTICE

When ordering a part that has more than one item number listed, check the remarks column for help in determining the proper part to order.

PART NO. Column

Numbers Used — Part numbers can be indicated by a number, a blank entry, or TBD.

TBD (To Be Determined) is generally used to show a part that has not been assigned a formal part number at the time of publication.

A blank entry generally indicates that the item is not sold separately or is not sold by Multiquip. Other entries will be clarified in the “Remarks” Column.

QTY. Column

Numbers Used — Item quantity can be indicated by a number, a blank entry, or A/R.

A/R (As Required) is generally used for hoses or other parts that are sold in bulk and cut to length.

A blank entry generally indicates that the item is not sold separately. Other entries will be clarified in the “Remarks” Column.

REMARKS Column

Some of the most common notes found in the “Remarks” Column are listed below. Other additional notes needed to describe the item can also be shown.

Assembly/Kit — All items on the parts list with the same unique symbol will be included when this item is purchased.

Indicated by:

“INCLUDES ITEMS W/(unique symbol)”

Serial Number Break — Used to list an effective serial number range where a particular part is used.

Indicated by:

“S/N XXXXX AND BELOW”

“S/N XXXX AND ABOVE”

“S/N XXXX TO S/N XXX”

Specific Model Number Use — Indicates that the part is used only with the specific model number or model number variant listed. It can also be used to show a part is NOT used on a specific model or model number variant.

Indicated by:

“XXXXX ONLY”

“NOT USED ON XXXX”

“Make/Obtain Locally” — Indicates that the part can be purchased at any hardware shop or made out of available items. Examples include battery cables, shims, and certain washers and nuts.

“Not Sold Separately” — Indicates that an item cannot be purchased as a separate item and is either part of an assembly/kit that can be purchased, or is not available for sale through Multiquip.

SUGGESTED SPARE PARTS

PRO36/PRO46 WALK-BEHIND TROWELS

1 to 3 Units

Qty.	P/N	Description
1.....	30159.....	CABLE, THROTTLE
1.....	30158.....	CABLE, CONTROL, STD
1.....	30229.....	CABLE, INSTACLUTCH
1.....	30188.....	CABLE, FRESNO PITCH
1.....	30198.....	CABLE, FRESNO WINCH
2.....	0152 3.....	V-BELT, A28
4.....	1157 A.....	BUSHING, TROWEL ARM
4◇.....	2826-1.....	ARM, TROWEL, SILVER
4◆.....	2827-1.....	ARM, TROWEL, SILVER
1.....	10968.....	THRUST BEARING KIT
2.....	20111.....	OIL, MOBIL SYNTHETIC 22OZ.

NOTICE

- ◇ PRO36
- ◆ PRO46

HONDA GX270UT2QA2 GASOLINE ENGINE

1 to 3 Units

Qty.	P/N	Description
3.....	17210ZE2515.....	FILTER, DUAL AIR
3.....	9807955876.....	SPARK PLUG
1.....	28462ZE2W11.....	ROPE, RECOIL STARTER
1.....	17620Z4H900.....	CAP, FUEL
1.....	17672Z4H000.....	FILTER, FUEL

HONDA GX340UT2QA2/GX340UT2QAP2 ENGINE

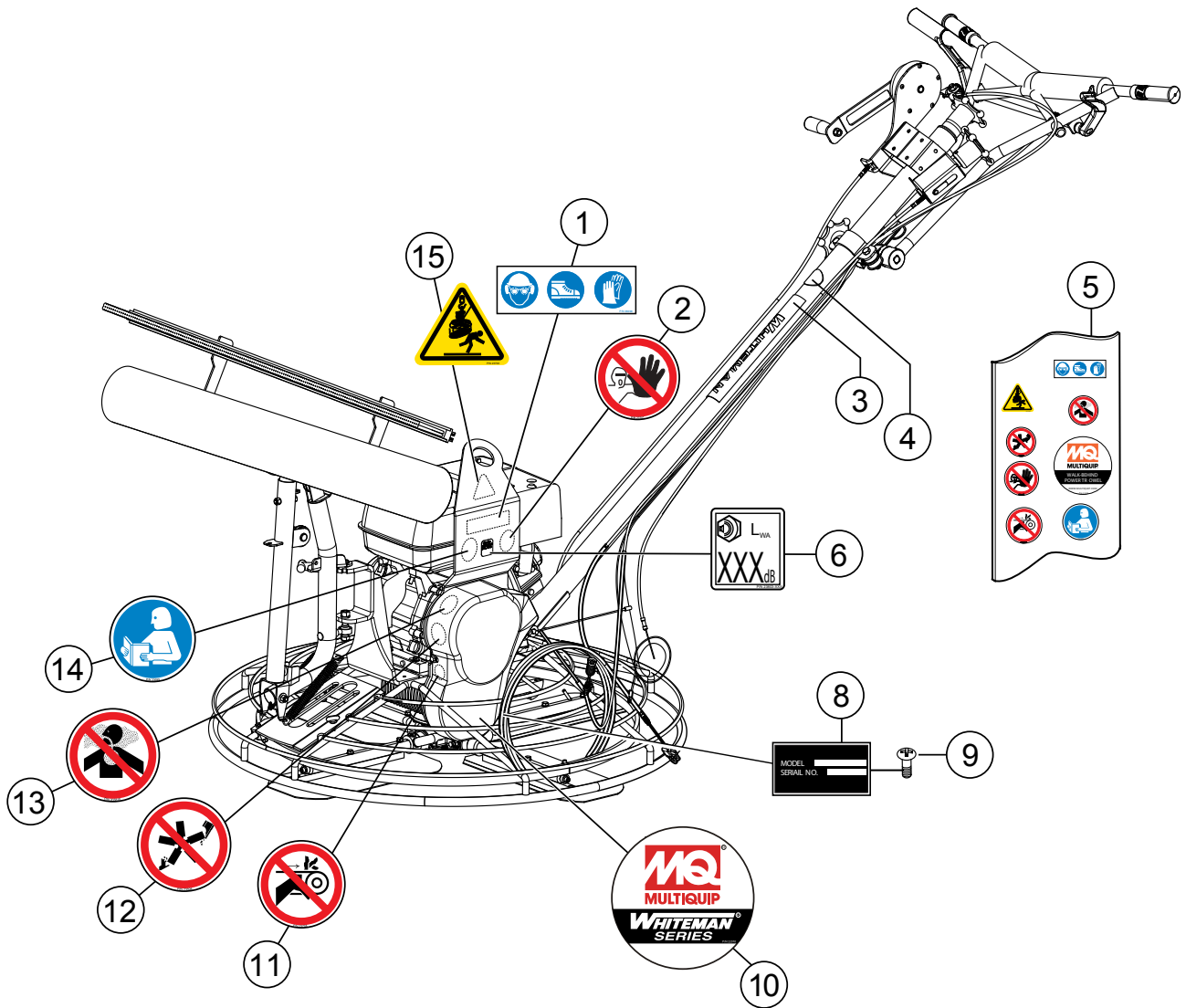
1 to 3 Units

Qty.	P/N	Description
3.....	17210ZE2515.....	FILTER, DUAL AIR
3.....	9807956846.....	SPARK PLUG
1.....	28462ZV7003.....	ROPE, RECOIL STARTER
1.....	17620Z4H900.....	CAP, FUEL
1.....	17672Z4H000.....	FILTER, FUEL

NOTICE

Part numbers on this Suggested Spare Parts list may supersede/replace the part numbers shown in the following parts lists.

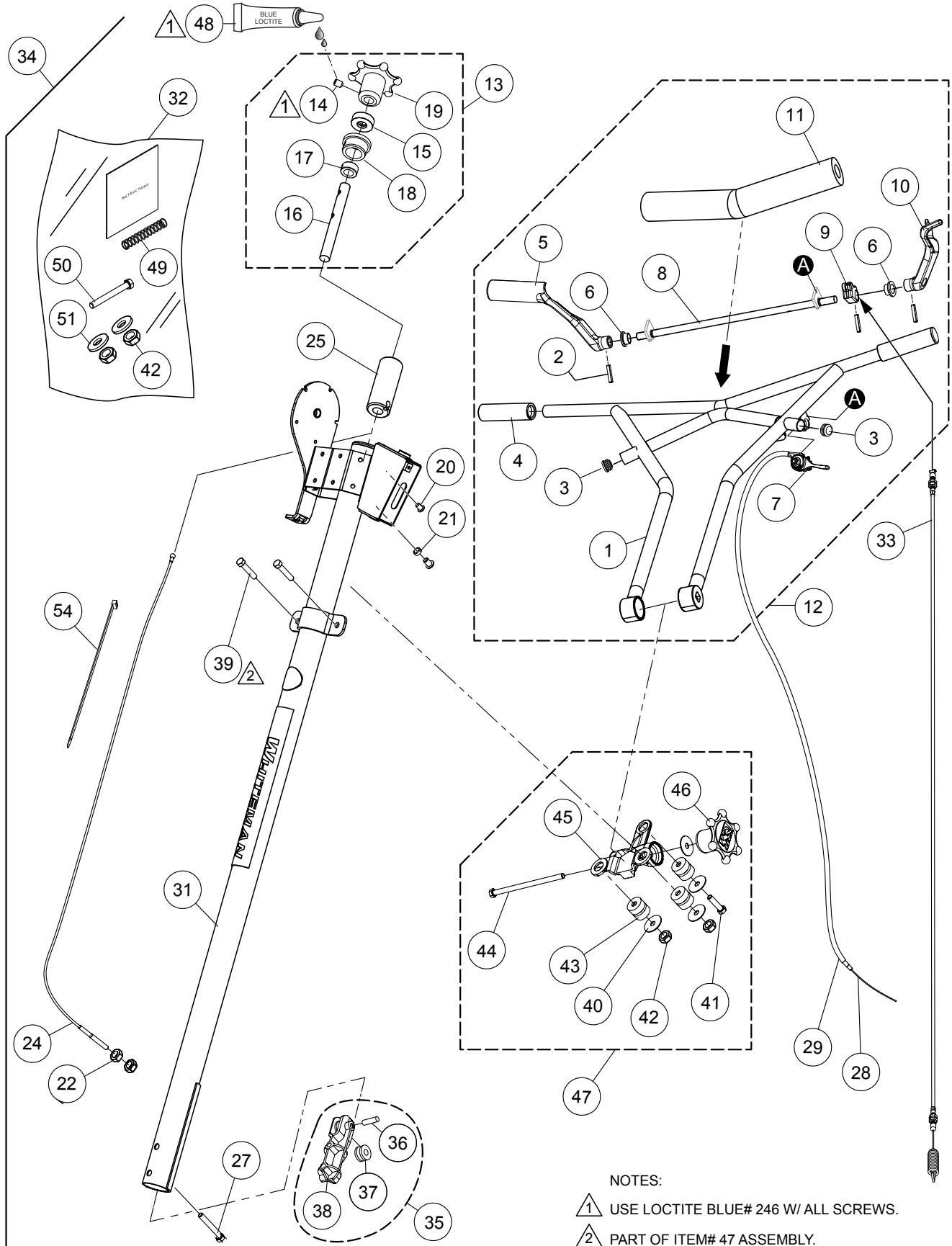
NAMEPLATE AND DECALS



NAMEPLATE AND DECALS

<u>NO.</u>	<u>PART NO.</u>	<u>PART NAME</u>	<u>QTY.</u>	<u>REMARKS</u>
1#	36099	ISO DECAL: PROTECTIVE CLOTHING, 3.50" X 1.13"	1	
2#	23701	ISO DECAL: ASK FOR TRAINING, 2.00" DIA.	1	
3	2942	DECAL: MQ WHITEMAN 13" WHITE	1	
4	1492	DECAL: FINISHER HANDLE	1	
5	22038	DECAL KIT	1	INCLUDES ITEMS W/#
6	23803-107	ISO DECAL: GUARANTEED SOUND 107 dbA	1	PRO36 ONLY
6	23803-109	ISO DECAL: GUARANTEED SOUND 109 dbA	1	PRO46 ONLY
8		DECAL: SERIAL PLATE	1	CONTACT MQ PARTS DEPT.
9	4014	SCREW, 2-3/16" P-K TYPE U-DRIVE	2	
10#	22070	DECAL: MQ MULTIQUIP ROUND	1	
11#	23704	ISO DECAL: GUARD WARNING 2.00" DIA.	1	
12#	23698	ISO DECAL: ROTATING BLADE HAZARD, 2.00" DIA.	1	
13#	23810	ISO DECAL: INHALATION HAZARD, 2.00" DIA	1	
14#	23699	ISO DECAL: READ MANUAL, 2.00" DIA.	1	
15#	23700	ISO DECAL: LIFTING/CRUSH, 2.4" X 2.0"	1	

STANDARD HANDLE ASSY.



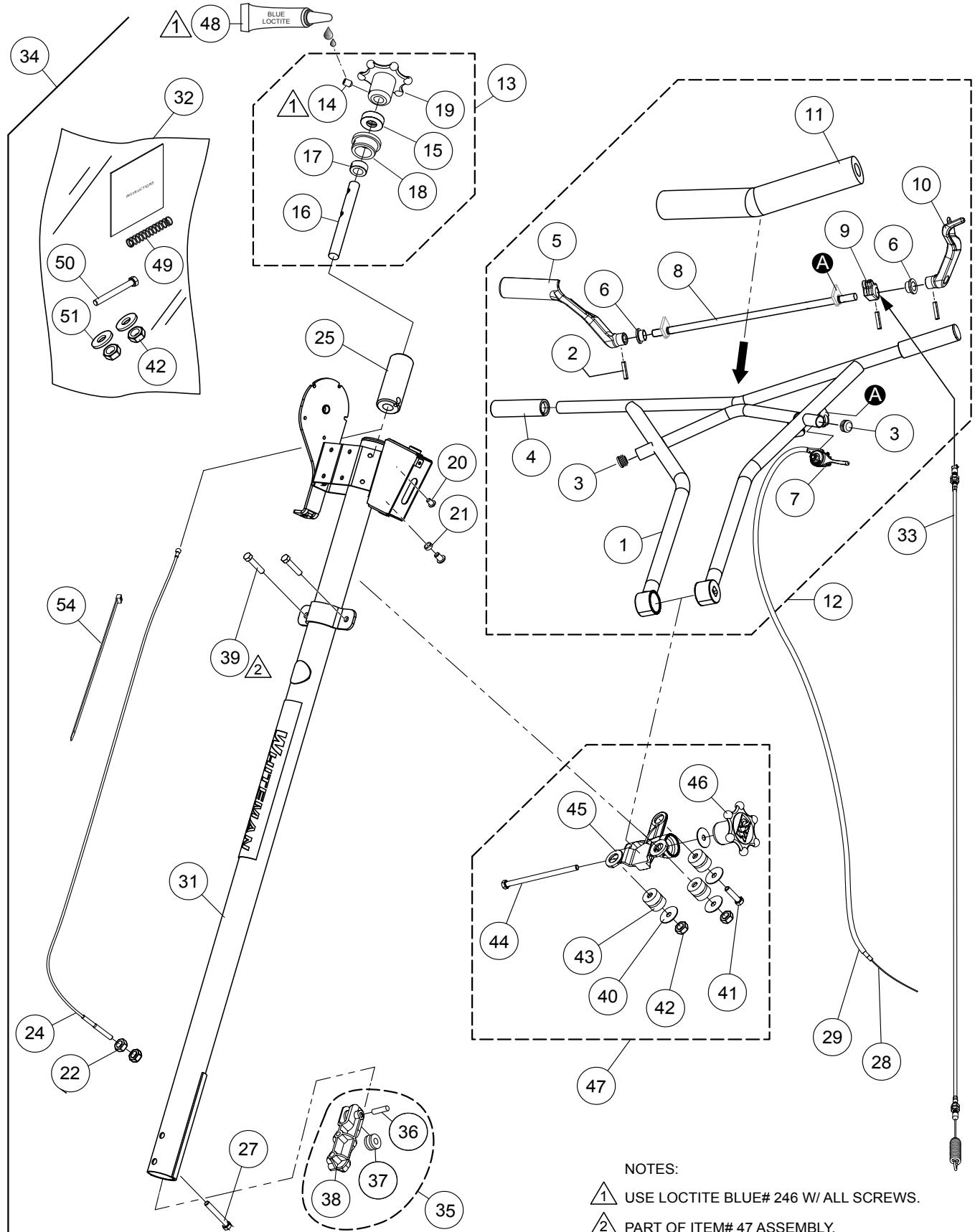
NOTES:

- ▲ 1 USE LOCTITE BLUE# 246 W/ ALL SCREWS.
- ▲ 2 PART OF ITEM# 47 ASSEMBLY.

STANDARD HANDLE ASSY.

<u>NO.</u>	<u>PART NO.</u>	<u>PART NAME</u>	<u>QTY.</u>	<u>REMARKS</u>
1#%	30155	UPPER HANDLE	1	
2#%	30203	PIN, ROLL, 3/16" X 7/8"	3	
3#%	22208	PLUG, THROTTLE LEVER	2	
4#%	22762	GRIP, HANDLE	1	
5#%	30169	CASTING, RIGHT PADDLE	1	
6#%	30173	BUSHING, FLANGED, BRONZE, .51" ID X .625" OD	2	
7#%	22732	THROTTLE LEVER ASSY.	1	
8#%	30172	ROD, TORSION BAR	1	
9#%	30171	CASTING, CABLE PULL	1	
10#%	30170	CASTING, LEFT PADDLE	1	
11#%	22166	COVER, VIBE CONTROL HANDLE PAD	1	
12#	30156	UPPER HANDLE ASSY., INSTACLUTCH	1	INCLUDES ITEMS W/%
13#	20819	HAND WHEEL ASSY., PITCH CONTROL.....	1	INCLUDES ITEMS W/\$
14#\$	0122 C	SCREW, SHS 3/8"-16 X 1/2"	1	
15#\$	0281	BEARING, THRUST	1	
16#\$	1478	SHAFT, TROWEL CONTROL	1	
17#\$	3615	COLLAR, SET 3/4" ID W/SET SCREW	1	
18#\$	20282	BEARING, TROWEL CONTROL	1	
19#\$	20817	WHEEL, HANDLE	1	
20#	0786	SCREW, BHC 1/4"-20 X 3/8" NYL PATCH, NP	2	
21#	0786 A	SPACER, SLIDE BLOCK GUIDE, .360" X 17/64" X 1/8"L	1	
22#	1116	NUT, BRASS JAM 5/16"-18	2	
24#	30158	CABLE, CONTROL	1	
25#	20287	SLIDE BLOCK, TROWEL CONTROL	1	
27#	21017	SCREW, HHC 3/8"-16 X 3-1/4" FULL THRD GRD 5	1	
28#	30159	CABLE, THROTTLE	1	
29#	30160	HOUSING, THROTTLE CABLE	1	
31#	30161	HANDLE, PRO TROWEL VIBE CONTROL	1	
32#	30232	KIT, HANDLE INSTALLATION	1	INCLUDES ITEMS W/◆
33#	30229	CABLE, INSTACLUTCH	1	
34	30204	MAIN HANDLE ASSY., PRO	1	INCLUDES ITEMS W/# CONTACT UNIT SALES DEPT.

STANDARD HANDLE ASSY.



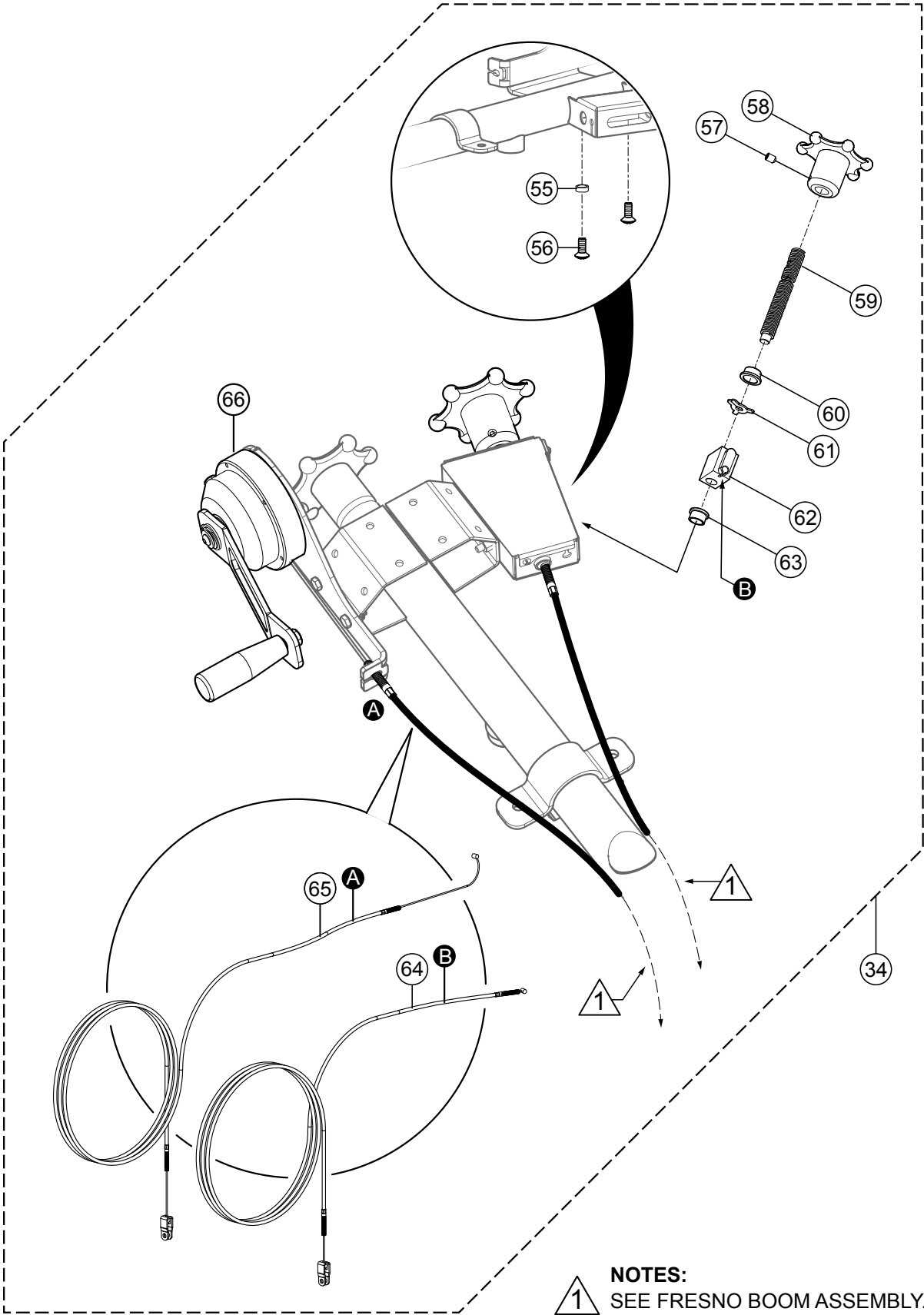
NOTES:

- ① USE LOCTITE BLUE# 246 W/ ALL SCREWS.
- ② PART OF ITEM# 47 ASSEMBLY.

STANDARD HANDLE ASSY.

<u>NO.</u>	<u>PART NO.</u>	<u>PART NAME</u>	<u>QTY.</u>	<u>REMARKS</u>
35#	20280	BLOCK, PITCH CONTROL	1	INCLUDES ITEMS W/@
36#@	20279	PIN, SUPPORT BLOCK	1	
37#@	1118	PULLEY, PITCH CABLE ASSY.	1	
38#@	20275	BLOCK, SUPPORT	1	
39#❖	1665	SCREW, HHC 3/8"-16 X 2"	2	
40#❖	3233	WASHER, FENDER, 1.5"OD X 3/8"ID	4	
41#❖	9154	SCREW, HHC 3/8"-16 X 1-3/4"	1	
42#❖◆	10133	NUT, NYLOC 3/8"-16	4	
43#❖	22059	ISOLATOR, VIBRATION	3	
44#❖	22167	SCREW, HHC 3/8"-16 X 6.5" GRD 5	1	
45#❖	22206	CHASSIS, CAST VIBRATION ISOLATOR	1	
46#❖	20439	WHEEL ASSY., HAND	1	
47#	30206	VIBE CHASSIS ASSY.....	1	INCLUDES ITEMS W/❖
48#	60097	LOCTITE, BLUE #246	1	
49#◆	21746	SPRING, PRIMARY THROTTLE RETURN	1	
50#◆	1493	SCREW, HHC 3/8"-16 X 3-1/4"	1	
51#◆	10136	WASHER, 3/8" FLAT	2	
54#	25383	TIE, CABLE TY-RAP, BLACK 14.7 X .1875	3	PRO36 ONLY
54#	1662	TIE, CABLE TY-RAP, BLACK 11.02"L 50#	3	PRO36 ONLY

STANDARD HANDLE ASSY. (CONTINUED)

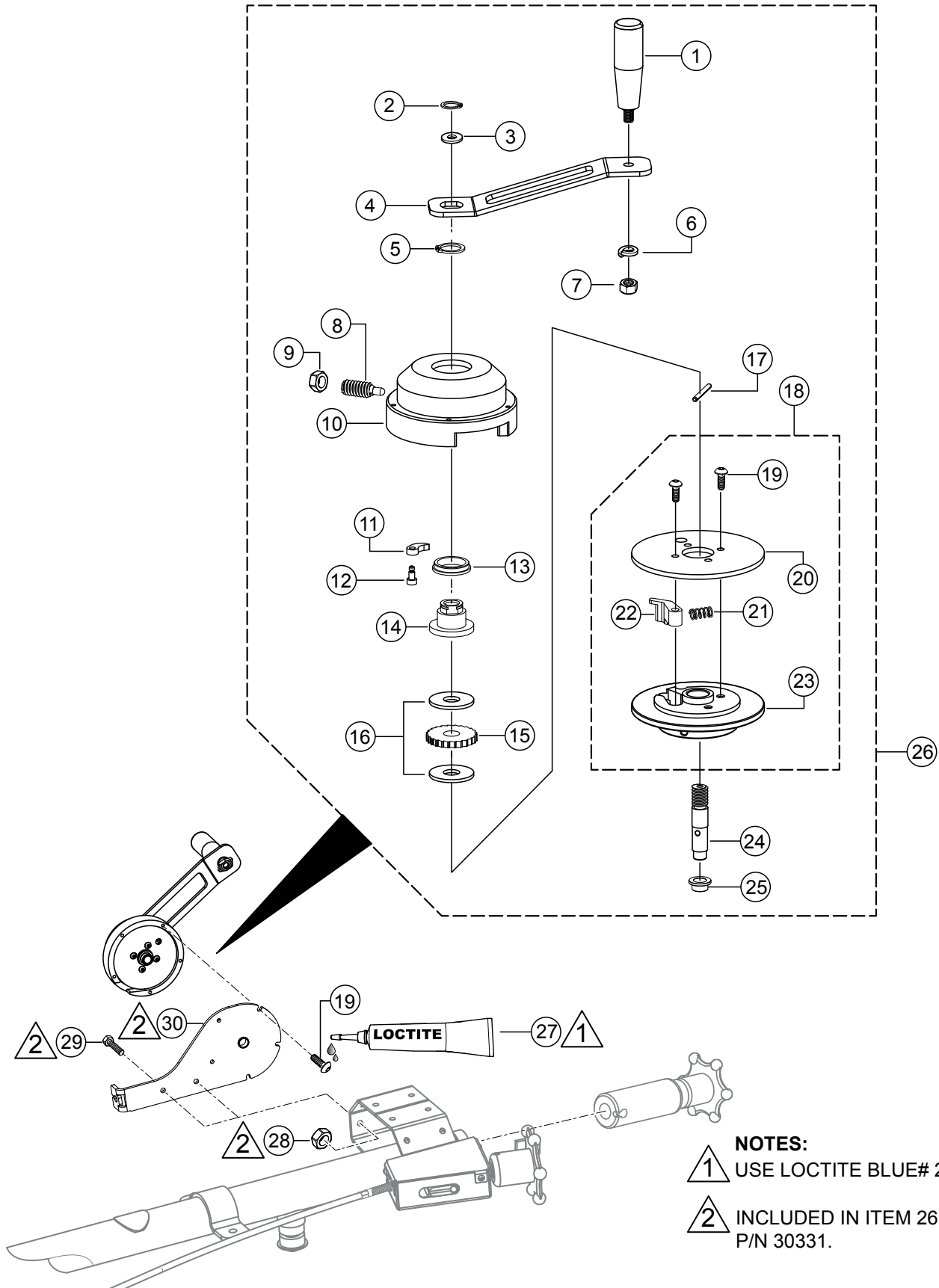


NOTES:
1 SEE FRESNO BOOM ASSEMBLY.

STANDARD HANDLE ASSY. (CONTINUED)

<u>NO.</u>	<u>PART NO.</u>	<u>PART NAME</u>	<u>QTY.</u>	<u>REMARKS</u>
55#	0786 A	SPACER, SLIDE BLOCK GUIDE, .360 X 17/64" X 1/8"L	1	
56#	0786	SCREW, BHC 1/4"-20 X 3/8" NYL PATCH, NP	2	
57#	0122 C	SCREW, SHS 3/8"-16 X 1/2"	1	
58#	20817	WHEEL, HAND	1	
59#	30166	ACME ROD, PITCH CONTROL	1	
60#	30197	FLANGE BUSHING, BRONZE, .750 ID X .875 OD	1	
61#	30196	RETAINING RING, CRIMP-ON, 3/4" SHAFT	1	
62#	30167	BLOCK, PITCH CONTROL	1	
63#	30173	BUSHING, FLANGED, BRONZE, .51 ID X .625 OD	1	
64#	30188	CABLE, FRESNO PITCH	1	
65#	30198	CABLE, FRESNO WINCH	1	
66#	30331	WINCH ASSY., FRESNO CONTROL	1	

FRESNO WINCH ASSY.

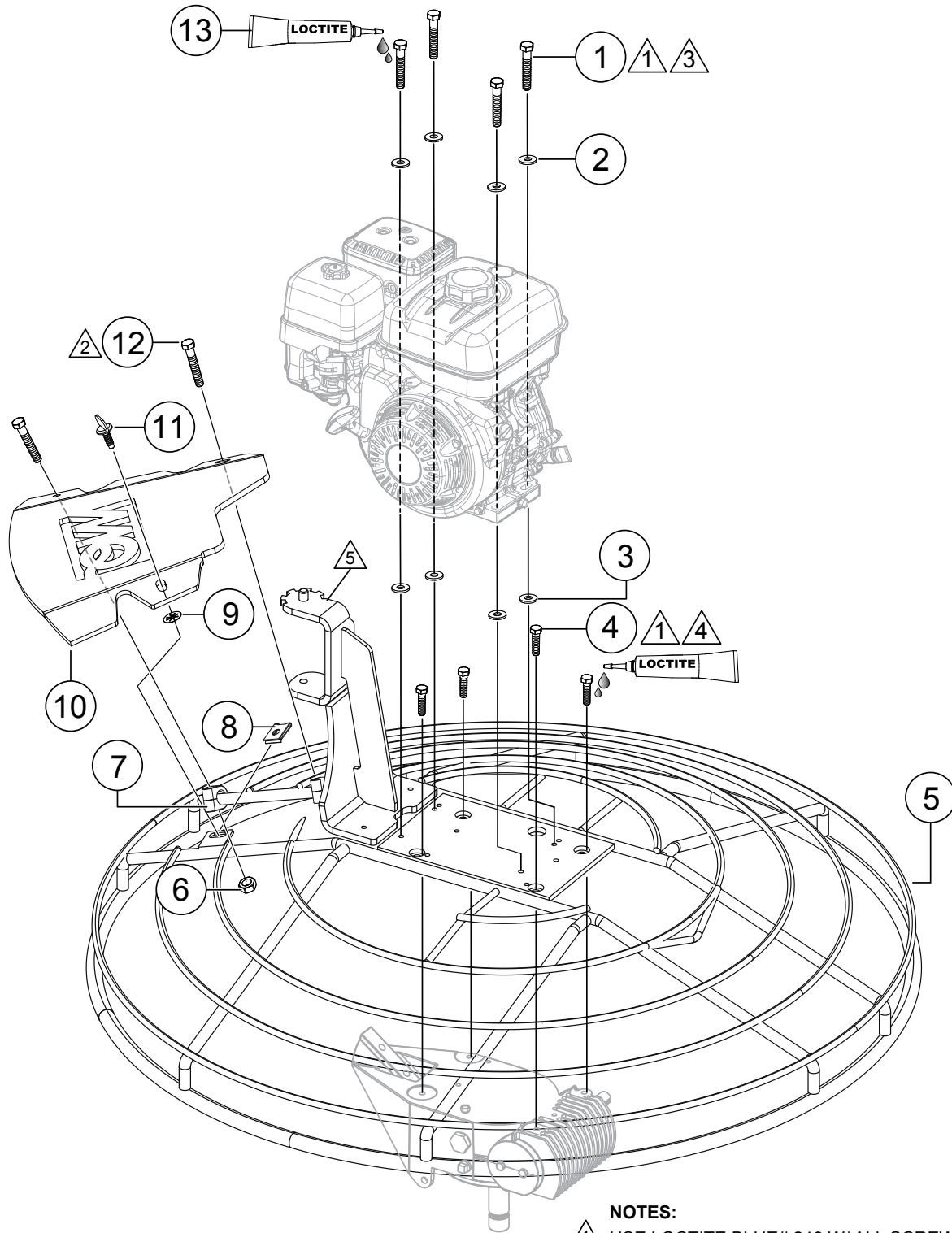


- NOTES:**
- 1 USE LOCTITE BLUE# 246.
 - 2 INCLUDED IN ITEM 26 P/N 30331.

FRESNO WINCH ASSY.

<u>NO.</u>	<u>PART NO.</u>	<u>PART NAME</u>	<u>QTY.</u>	<u>REMARKS</u>
1#	30195	HANDLE, REVOLVING PHENOLIC, 1.125" X 3.563"	1	
2#	1138	SNAP RING, EXTERNAL, 1.125" DIA	1	
3#	30483	WASHER, NEEDLE BEARING, 1.125"ID X 1.750"OD X 0.32"	1	
4#	30194	CRANK HANDLE	1	
5#	32445	RING, HVY DUTY RETAINING, 7/8"	1	
6#	0166 A	WASHER, LOCK, 3/8" MED.	1	
7#	1456	NUT, HEX FINISH 3/8"-16	1	
8#	30178	SPRING PLUNGER, LONG NOSE, 1/4"-20 THREAD	1	
9#	0949	NUT, HEX JAM 1/4"-20	1	
10#	30175	HOUSING	1	
11#	30180	PAWL, STEEL	1	
12#	30313	SCREW, SH SHLDR 8-32, 3/16"D X 1/4"L	1	
13#	30181	FLANGE BUSHING, BRONZE, 1.130 ID X 1.375 OD	1	
14#	30176	NUT	1	
15#	30179	RATCHET, 24 TOOTH	1	
16#	30193	FRICTION DISC	2	
17#	4542	PIN, ROLL 3/16" X 1-3/4"	1	
18#	30185	HUB ASSY.	1	INCLUDESITEMSW/\$
19#\$	32443	SCREW, BHSC, 10-32 X 3/4"	9	
20#\$	30183	DRUM PLATE	1	
21#\$	30192	SPRING, WINCH LOCK, 0.18 OD X 0.375 L	1	
22#\$	30184	LOCK PAWL	1	
23#\$	30182	DRUM	1	
24#	30177	SHAFT, ACME ROD	1	
25#	30173	BUSHING, FLANGED, BRONZE, .51 ID X .625 OD	1	
26	30331	WINCH ASSY., FRESNO CONTROL	1	INCLUDESITEMSW/#
27	60097	BLUE LOCTITE, #246	AR	
28#	10024	NUT, NYLOC 1/4"-20	2	
29#	0131 A	SCREW, HHC 1/4"-20 X 3/4"	2	
30#	30164	PLATE, WINCH BRACKET, PROTROWEL	1	

GUARD RING AND ENGINE MOUNTING ASSY.



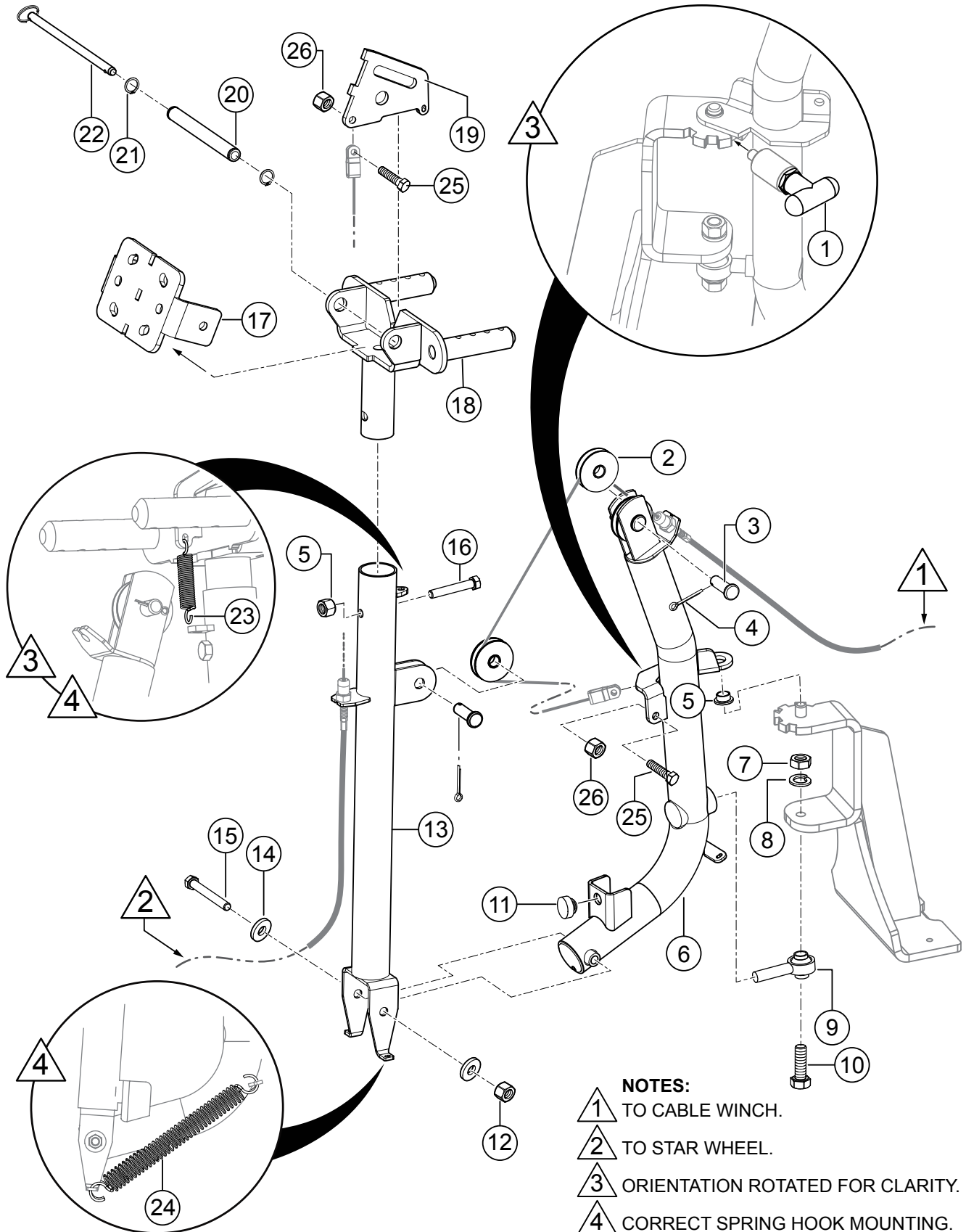
NOTES:

- ① USE LOCTITE BLUE# 246 W/ ALL SCREWS
- ② TORQUE TO 8 FT.-LBS. (10.8 N m)
- ③ TORQUE TO 14.5 FT.-LBS. (20 N m)
- ④ TORQUE TO 23 FT.-LBS. (31 N m)
- ⑤ STANCHION IS WELDED TO THE GUARD RING.

GUARD RING AND ENGINE MOUNTING ASSY.

<u>NO.</u>	<u>PART NO.</u>	<u>PART NAME</u>	<u>QTY.</u>	<u>REMARKS</u>
1	1391	SCREW, HHC 5/16"-24 X 1-1/2" ZINC	4	
2	933241	WASHER, FLAT SAE 5/16" GRD 9 YZ	4	
3	13551	WASHER, FLAT 3/8" EXT THICK HIGH STRGTH	4	
4	0205	SCREW, HHC 3/8"-16 X 1"	4	
5	30280	GUARD RING, W/BOOM STANCHION	1.....	PRO36 ONLY
5	30293	GUARD RING, W/BOOM STANCHION	1.....	PRO46 ONLY
6	10024	NUT, NYLOC 1/4"-20	2	
7	21922	CLAMP, 0.625" ID PIPE	2	
8	21894	CLIP, FAST LEAD	1	
9	21986	WASHER, FAST LEAD-STAINLESS	1	
10	30484	ACCESS PANEL	1	
11	21893	SCREW, FAST LEAD	1	
12	26250	SCREW, HHC 1/4"-20 X 1-3/4"	2	
13	60097	BLUE LOCTITE, #246	AR	

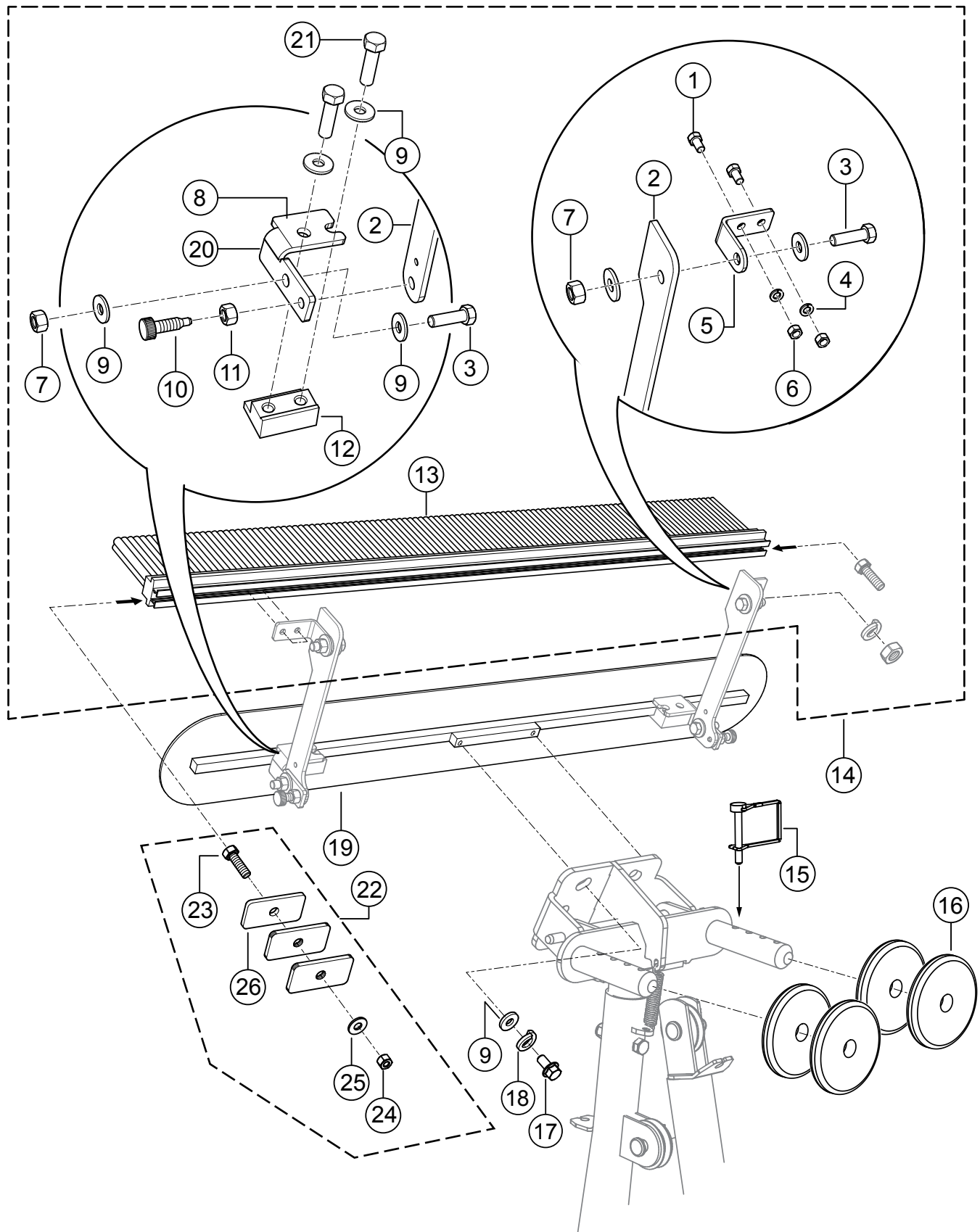
FRESNO BOOM ASSY.



FRESNO BOOM ASSY.

<u>NO.</u>	<u>PART NO.</u>	<u>PART NAME</u>	<u>QTY.</u>	<u>REMARKS</u>
1	22947	PULL-PIN, SPRING LOADED	1	
2	29155	SHEAVE, 2.00 OD X 0.500 ID	2	
3	19974	PIN, CLEVIS 1/2" X 1.25 EFF	2	
4	6014 B	PIN, COTTER 3/32" D X 1.00"	2	
5	30173	BUSHING, FLANGED, BRONZE, .51" ID X .625" OD	1	
6	30278	BOOM	1	
7	968011	NUT, HEX FINISH 1/2" MED.	1	
8	5054 A	WASHER, LOCK 1/2" MED.	1	
9	21944	ROD END, 1/2"-20 M RH W/CUSTOM BALL	1	
10	12402	SCREW, HHC 1/2"-13 X 2-1/2"	1	
11	21597	BUMPER, STEM 1.0"D X .5S X .31	1	
12	10133	NUT, NYLOC 3/8"-16	2	
13	30272	BOOM, WBT PITCH	1	
14	10136	WASHER, FLAT SAE 3/8"	2	
15	1493	SCREW, HHC 3/8"-16 X 3-1/4"	1	
16	4370	SCREW, HHC 3/8"-16 X 2-1/4"	1	
17	30250	BRACKET, ACCESSORY PLATE	1	
18	30276	ARM, WBT ROLL	1	
19	30332	PLATE, PITCH	1	
20	30251	PIVOT	1	
21	10096-001	RING, SNAP, TRUAC #5100-62	2	
22	30253	DETENT PIN, PITCH AXLE	1	
23	30248	SPRING, BLADE RETURN	1	
24	30243	SPRING, LOWER ASSIST	2	
25	0202	BOLT, HEX HEAD, 5/16"-18 X 1"	2	
26	5283	NUT, NYLOC, 5/16"-18	2	

BRUSH TO FRESNO KIT



BRUSH TO FRESNO KIT

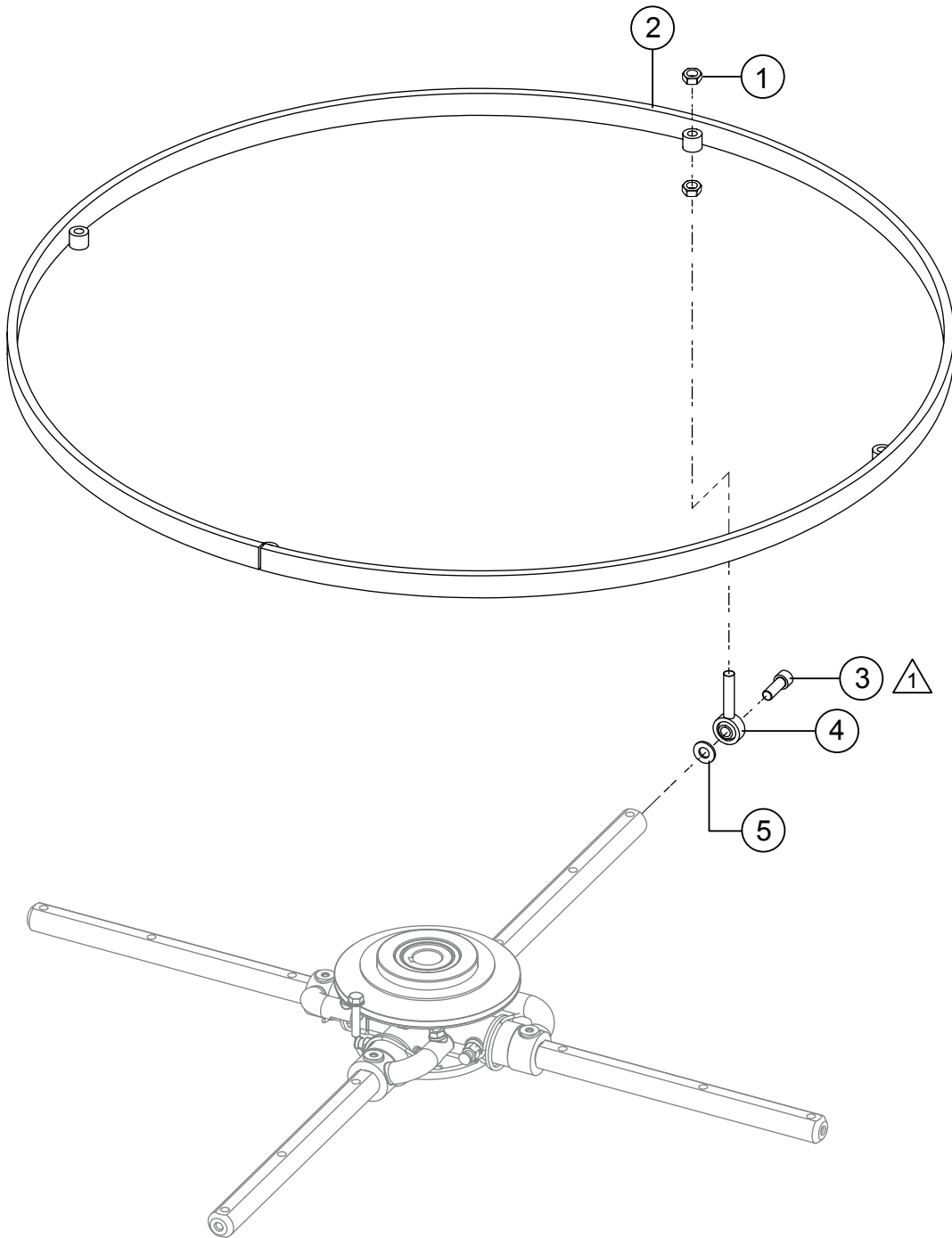
<u>NO.</u>	<u>PART NO.</u>	<u>PART NAME</u>	<u>QTY.</u>	<u>REMARKS</u>
1#	0131 A	SCREW, HHC 1/4"-20 X 3/4"	4	
2#	30307	ARM, BRUSH TO FRESNO	2	
3#	3910382	SCREW, SHDLR 3/8"D X 3/8"L, 5/16"-1, SCKT HD	4	
4#	0181 B	WASHER, LOCK 1/4" MED.	4	
5#	30308	L BRACKET, BRUSH TO FRESNO	2	
6#	0949	NUT, HEX FINISH 1/4"-20 PLATED	4	
7#	5283	NUT, NYLOC 5/16"-18	4	
8#	30312	PINCH BRACKET LEFT, BRUSH TO FRESNO	1	
9#	10136	WASHER, FLAT SAE 3/8"	12	
10#	30378	RETRACTABLE PIN	2	
11#	968011	NUT, HEX FINISH 1/2"-13	2	
12#	30305	BLOCK, BRUSH TO FRESNO	2	
13#	30298	FRESNO BRUSH, ORANGE.....	1	STANDARD BRUSH (PRO36)
13◇	30419	FRESNO BRUSH, GREEN, STIFF	1	
13◇	30418	FRESNO BRUSH, BLACK, SOFT	1	
13\$	30299	FRESNO BRUSH, ORANGE.....	1	STANDARD BRUSH (PRO46)
13◆	30421	FRESNO BRUSH, GREEN, STIFF	1	
13◆	30420	FRESNO BRUSH, BLACK, SOFT	1	
14	30310	KIT, BRUSH TO FRESNO (PRO36)	1	INCLUDES ITEMS W/#
14	30311	KIT, BRUSH TO FRESNO (PRO46)	1	INCLUDES ITEMS W/\$
15	30295	PIN, HITCH, WIRE LOCK	2	
16	32141	PLATE, 5-LB WEIGHT	4	
17	38274	SCREW, HHFS 3/8"-16 X .75 ZINC	2	
19	30296	FRESNO BLADE, 36".....	1	PRO36 ONLY
19	30297	FRESNO BLADE, 48".....	1	PRO46 ONLY
20	30306	PINCH BRACKET RIGHT, BRUSH TO FRESNO	1	
21	0205	SCREW, HHC 3/8"-16 X 1.0	4	
22	30400	WEIGHT KIT, FRESNO BRUSH.....	1	INCLUDES ITEMS W/@
23@	0424	SCREW, HHC 1/4"-20 X 1-1/4"	2	
24@	10024	NUT, NYLOC 1/4"-20	2	
25@	25334	WASHER, FLAT 1/4" USS	2	
26@	30401	WEIGHT, 0.18 LBS	6	

NOTICE

◇ OPTIONAL BRUSH FOR PRO36

◆ OPTIONAL BRUSH FOR PRO46

STABILIZER RING ASSY.



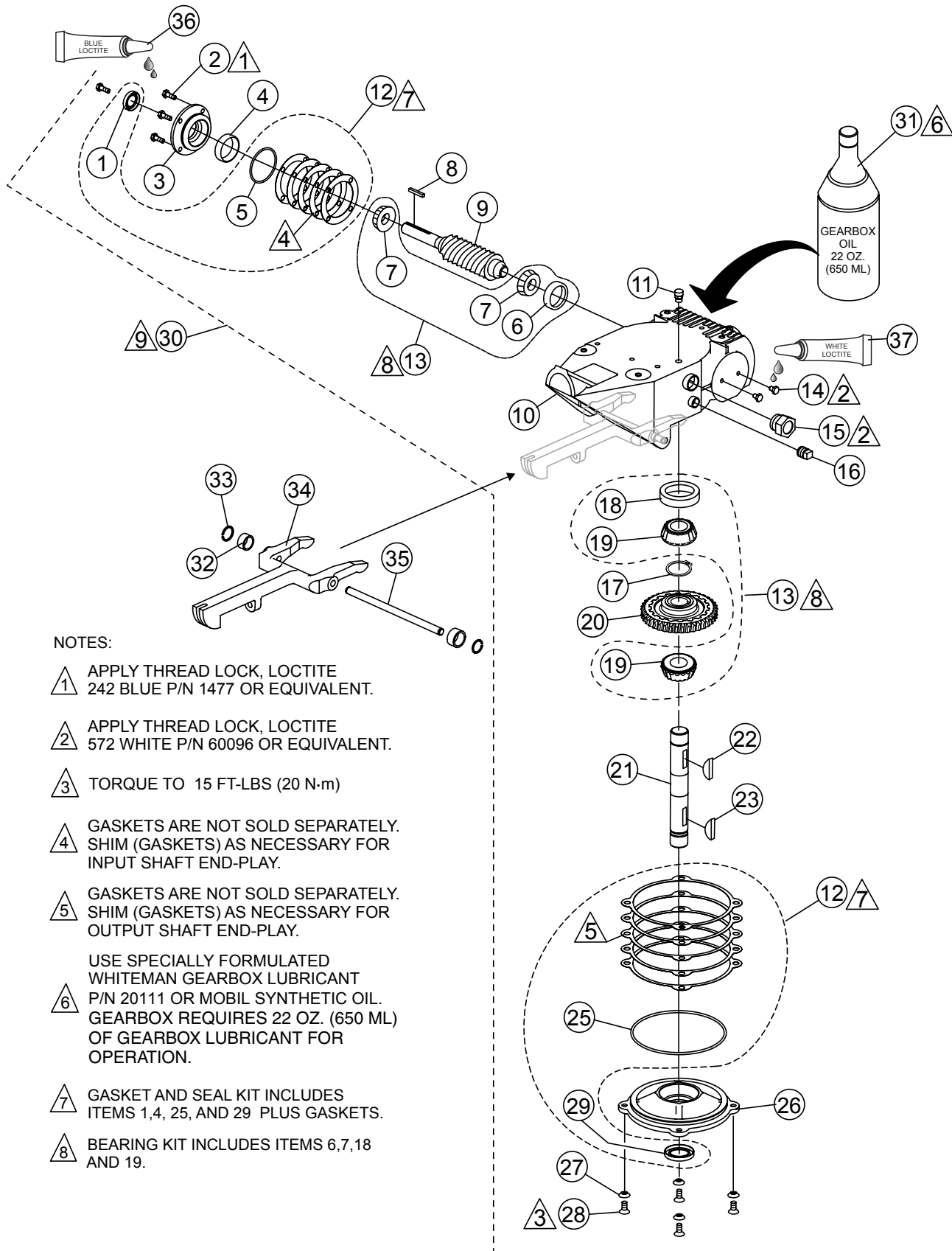
NOTES:

△ 1 TORQUE TO 17 FT.-LBS. (23 N·m)

STABILIZER RING ASSY.

<u>NO.</u>	<u>PART NO.</u>	<u>PART NAME</u>	<u>QTY.</u>	<u>REMARKS</u>
1	6014 C	NUT, HEX FINISH 5/16"-24	8.....	PRO46 ONLY
2	1483	RING, STABILIZER.....	1.....	PRO46 ONLY
3	1237	SCREW, SHC 5/16"-18 X 7/8," NYL PATCH, NP	4.....	PRO46 ONLY
4	1723	ROD END, 5/16" DIA X 5/16"-24 MALE END RH.....	4.....	PRO46 ONLY
5	0300 B	WASHER, FLAT SAE 5/16"	4.....	PRO46 ONLY

GEARBOX ASSY.



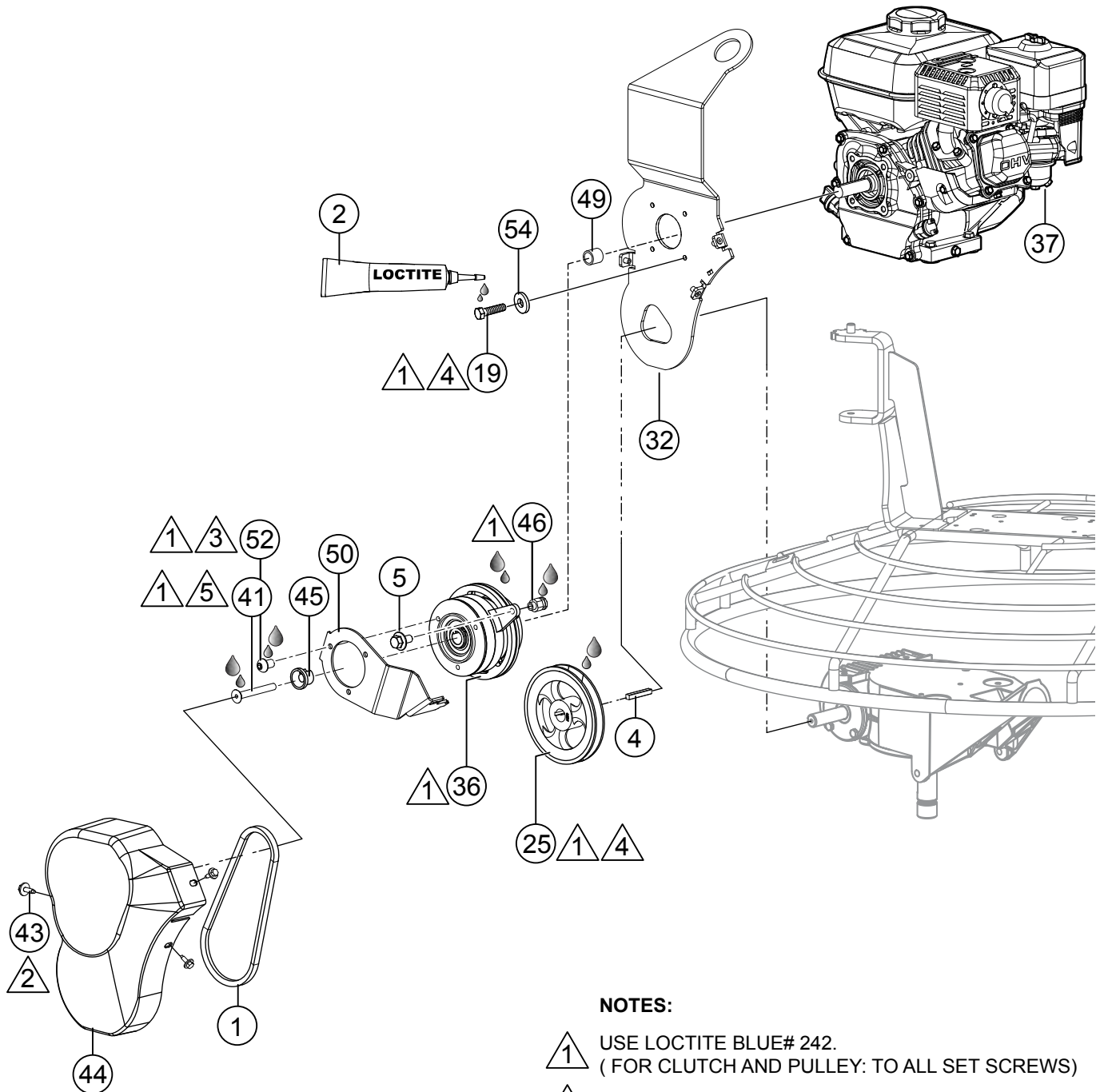
NOTES:

- 1 △ APPLY THREAD LOCK, LOCTITE 242 BLUE P/N 1477 OR EQUIVALENT.
- 2 △ APPLY THREAD LOCK, LOCTITE 572 WHITE P/N 60096 OR EQUIVALENT.
- 3 △ TORQUE TO 15 FT-LBS (20 N·m)
- 4 △ GASKETS ARE NOT SOLD SEPARATELY. SHIM (GASKETS) AS NECESSARY FOR INPUT SHAFT END-PLAY.
- 5 △ GASKETS ARE NOT SOLD SEPARATELY. SHIM (GASKETS) AS NECESSARY FOR OUTPUT SHAFT END-PLAY.
- 6 △ USE SPECIALLY FORMULATED WHITEMAN GEARBOX LUBRICANT P/N 20111 OR MOBIL SYNTHETIC OIL. GEARBOX REQUIRES 22 OZ. (650 ML) OF GEARBOX LUBRICANT FOR OPERATION.
- 7 △ GASKET AND SEAL KIT INCLUDES ITEMS 1,4, 25, AND 29 PLUS GASKETS.
- 8 △ BEARING KIT INCLUDES ITEMS 6,7,18 AND 19.

GEARBOX ASSY.

<u>NO.</u>	<u>PART NO.</u>	<u>PART NAME</u>	<u>QTY.</u>	<u>REMARKS</u>
1%\$	0753	SEAL, OIL	1	
2%	0131 A	SCREW, HHC 1/4"-20 X 3/4"	4	
3%	12876	FLANGE, INPUT SHAFT	1	
4%#	20466	BEARING, CUP, TIMKEN #M11910	2	
5%\$	20395	O-RING, 2"	1	
7%#	20465	BEARING, CONE, TIMKEN #LM11949	2	
8%	0627	KEY, SQ 3/16" X 1-1/4"	1	
9%	1851	GEAR, WORM "B" INPUT SHAFT	1	
10%	12874	CASE, WORM GEAR	1	
11%	21218	VENT, AIR	1	
12	21046	GASKET/SEAL KIT	1	INCLUDES ITEMS W/\$
13	21047	BEARING KIT	1	INCLUDES ITEMS W/#
14%	20476	SCREW, HHC 1/4"-28 X 3/8"	2	
15%	21033	SIGHT GLASS, 3/4" M PIPE STEEL	1	
16%	0121 A	FITTING, PLUG 3/8" MP SQ HEAD	1	
17%	1138	RING, SNAP	1	
18%#	20475	BEARING, CUP TIMKEN #M86610	2	
19%#	20474	BEARING, CONE TIMKEN #M86647	2	
20%	1140	GEAR, WORM, COMPOSITE	1	
21%	20470	SHAFT, OUTPUT	1	
22%	1139	KEY, WOODRUFF #810	1	
23%	1238	KEY, WOODRUFF #1012	1	
25%\$	20396	O-RING	1	
26%	12875	COVER, GEARBOX	1	
27%	10235	WASHER, C/S EXT. SHKP	4	
28%	20875	SCREW, FHSC 5/16"-18 X 3/4"	4	
29%\$	0254	SEAL, OIL	1	
30	20407	GEARBOX ASSY.	1	INCLUDES ITEMS W/%
31	20111	OIL, MOBIL SYNTHETIC SHC634, 22 OZ. (650 ML)	2	
32	22292	SPACER, 0.5" X 0.402" X .25"L UNTREATED	2	
33	20802	RING, SNAP	2	
34	1150	YOKE ARM	1	
35	20801	PIN, YOKE	1	
36	1477	LOCTITE, BLUE #242	AR	
37	60096	LOCTITE, WHITE #572	AR	

ENGINE AND CLUTCH ASSY.



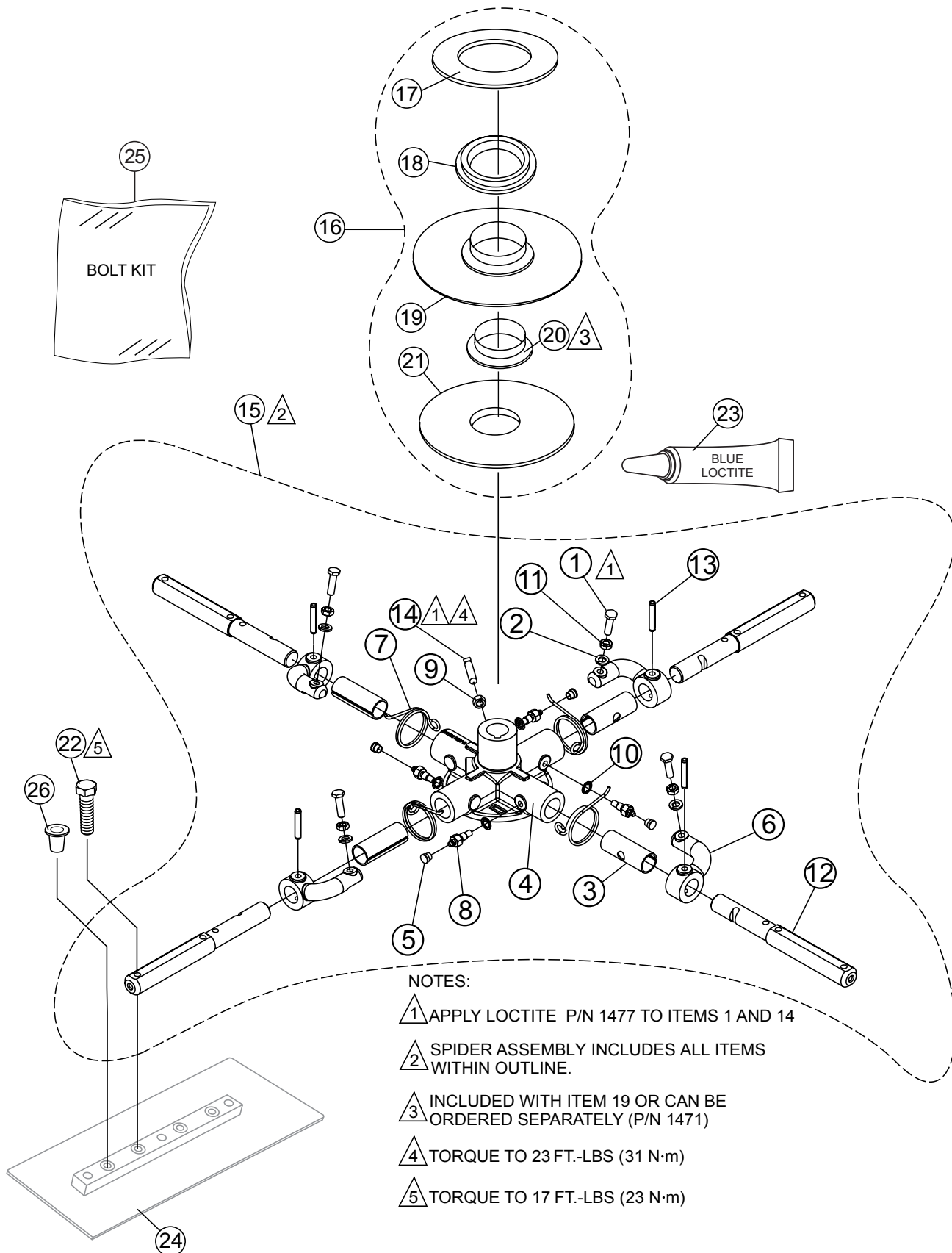
NOTES:

- ① USE LOCTITE BLUE# 242.
(FOR CLUTCH AND PULLEY: TO ALL SET SCREWS)
- ② TORQUE TO 8 FT.-LBS. (10.8 N·m)
- ③ TORQUE TO 17 FT.-LBS. (23 N·m)
- ④ TORQUE TO 14.5 FT.-LBS. (19.6 N·m)
- ⑤ TORQUE TO 26 FT.-LBS. (35 N·m)

ENGINE AND CLUTCH ASSY.

<u>NO.</u>	<u>PART NO.</u>	<u>PART NAME</u>	<u>QTY.</u>	<u>REMARKS</u>
1	0152 3	V-BELT, A28	1	
2	1477	BLUE LOCTITE, #242	AR	
4	0627	KEY, 3/16" X 1-1/4"	1	
5	22538-001	SCREW, HEX FLANGE, 1/4"-20 X .5"	1	
19	10229	SCREW, HHC 5/16"-24 X 1"	4	
25	21140	PULLEY AK54 X 3/4"	1	
32	21984	LIFTING BALE ASSY.	1	
36	22891	FRICITION DRIVE CLUTCH W/ADJ SHEAVE, 1.0"	1	
37	22623	ENGINE, HONDA, GX270 (9 HP).....	1	PRO36 ONLY
37	22625	ENGINE, HONDA, GX340 (11 HP).....	1	PRO46 ONLY
41	23965	SCREW, FHSC, 7/16"-20 X 1.00"	1	PRO36 ONLY
41	30318	SCREW, FHSC 3/8"-24 X 1	1	PRO46 ONLY
43	30119	SCREW, 1/4"-20 X 7/8" IND HEX, DOG PT	3	
44	30344	BELT GUARD	1	
45	30240	END CAP, INSTACLUTCH, 1" SHAFT	1	
46	30202	ANCHOR, SPRING	1	
49	30236	SPACER, 1" SHAFT	1	
50	30200	BRACKET, FRICTION CLUTCH	1	
52	32448	SCREW, BHC, 5/16"-18 X 1/2"	3	
54	933241	WASHER, FLAT SAE 5/16" GRD 9 YZ	4	

SPIDER ASSY.



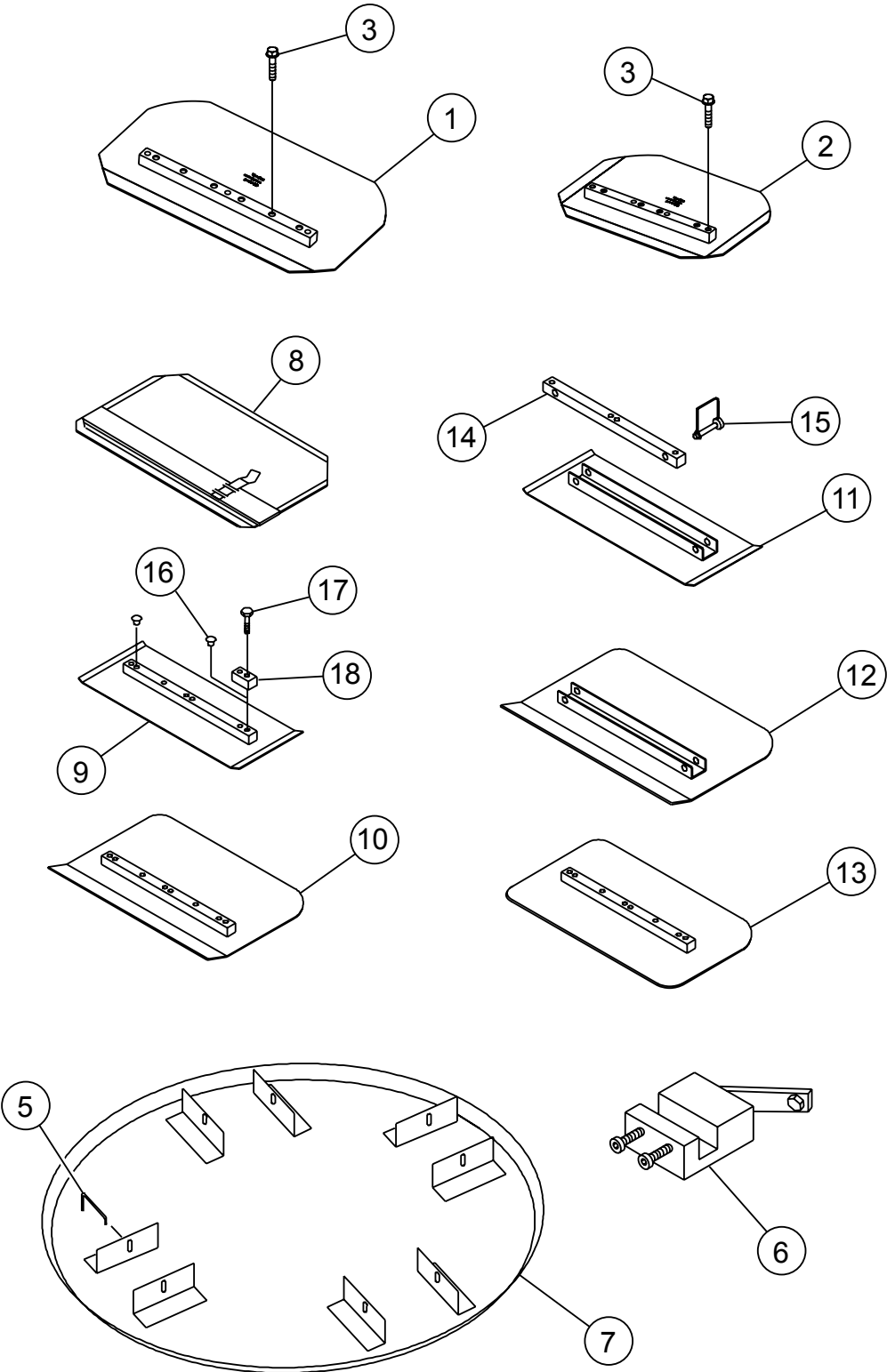
NOTES:

- ▲1 APPLY LOCTITE P/N 1477 TO ITEMS 1 AND 14
- ▲2 SPIDER ASSEMBLY INCLUDES ALL ITEMS WITHIN OUTLINE.
- ▲3 INCLUDED WITH ITEM 19 OR CAN BE ORDERED SEPARATELY (P/N 1471)
- ▲4 TORQUE TO 23 FT.-LBS (31 N·m)
- ▲5 TORQUE TO 17 FT.-LBS (23 N·m)

SPIDER ASSY.

<u>NO.</u>	<u>PART NO.</u>	<u>PART NAME</u>	<u>QTY.</u>	<u>REMARKS</u>
1% ♦	0164 B	SCREW, HHC ROUNDED 3/8"-16, FULL THREAD	4	
2% ♦	0166 A	LOCK WASHER 3/8" MED.	4	
3% ♦	1157 A	BUSHING, TROWEL ARM	4	
4% ♦	1161-1	SPIDER PLATE, 1-1/8" SHAFT 4-BLADE	1	
5% ♦	1162 A	CAP, GREASE ZERK #2 YELLOW	4	
6% ♦	1163-1	LEVER, TROWEL ARM, RIGHT HAND, SILVER	4	
7% ♦	1316	SPRING, LS ARM RETURN	4	
8% ♦	1322	RETAINING SCREW ASSY.	4	
9% ♦	1456	NUT, HEX FINISH 3/8"-16	1	
10% ♦	1875	WASHER, INT. SHKP. 3/8"	4	
11% ♦	1876	NUT, HEX JAM 3/8"-16, CLASS 2B	4	
12%	2826-1	ARM, TROWEL, SILVER	4	PRO36 ONLY
12 ♦	2827-1	ARM, TROWEL, SILVER	4	PRO46 ONLY
13% ♦	4164	ROLL PIN 5/16" X 1-3/4"	4	
14% ♦	12097	SCREW, SQHS 3/8"-16 X 1-3/4" CONE GRD 8 PLTD	1	
15	1215	SPIDER PLATE ASSY., (PRO36)	1	INCLUDES ITEMS W/%
15	1490	SPIDER PLATE ASSY., (PRO46)	1	INCLUDES ITEMS W/♦
16	10968	THRUST COLLAR ASSY.....	1	INCLUDES ITEMS W/\$
17\$	12208	WEAR RING	1	
18\$	12778	FLANGE BEARING	1	
19\$	10793	THRUST COLLAR	1	INCLUDES ITEMS W/#
20\$#	1471	THRUST COLLAR BUSHING	1	
21\$	1154 A	WEAR PLATE	1	
22@	21906	SCREW, HHCS 5/16"-18 X 1-1/2" GRD 5	12	
23	1477	BLUE LOCTITE, #242	AR	
24		BLADE ASSY.....	4	CONTACT UNIT SALES DEPT.
25	23647	KIT, BOLT.....	1	INCLUDES ITEMS W/@
26@	1434	PLUG, BLADE	4	

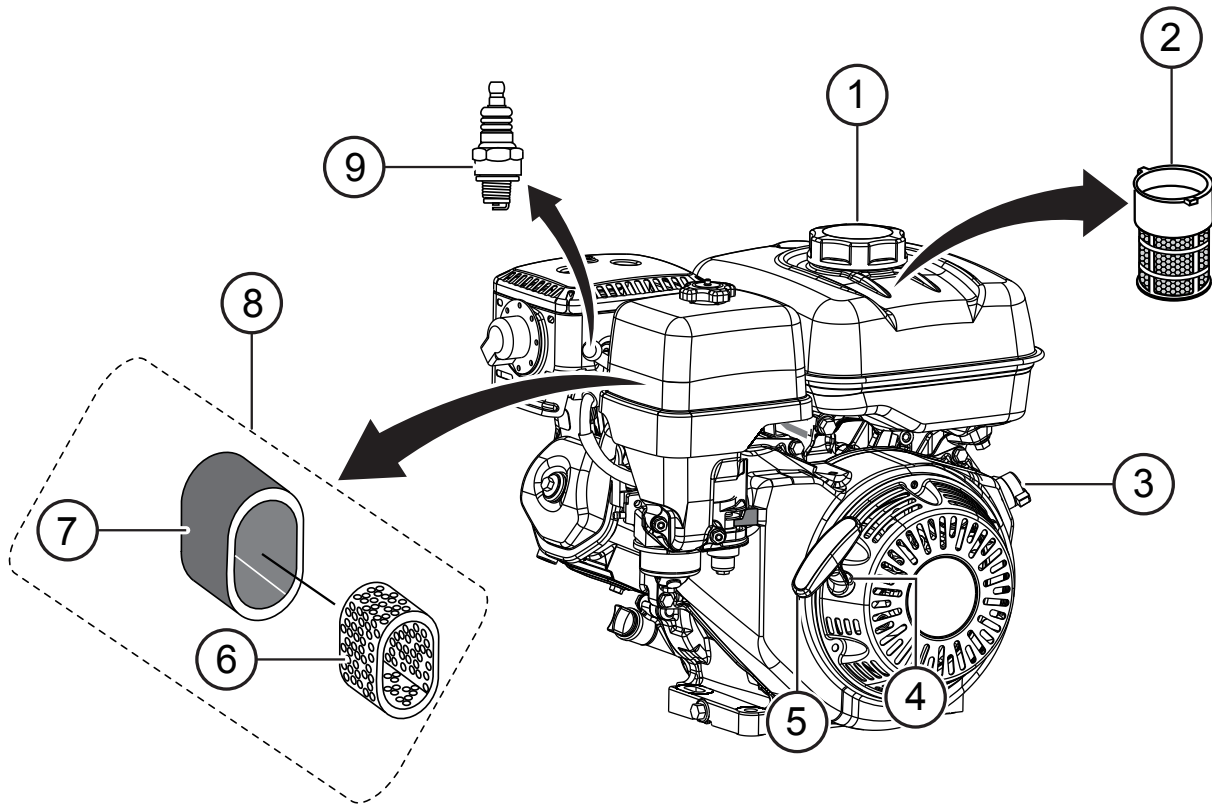
BLADES AND PAN ASSY.



BLADES AND PAN ASSY.

<u>NO.</u>	<u>PART NO.</u>	<u>PART NAME</u>	<u>QTY.</u>	<u>REMARKS</u>
1		BLADE, COMBO 8" X 14"	4.....	(ALL EXCEPT 30")
2		BLADE, COMBO, 8" X 10-1/2"	4.....	(30" TROWEL ONLY)
3	21906	SCREW, HHFS 5/16"-18 X 1-1/2" GRD 5	8.....	ALL
5	20646	LATCH PIN FOR FLOAT PANS	4.....	CONTACT UNIT SALES DEPT.
6	1817	TRWL ARM ADJ. FIXTURE 36" TO 46" MODELS	1.....	CONTACT UNIT SALES DEPT.
7		FLOAT DISC	1.....	CONTACT UNIT SALES DEPT.
8		FLOAT BLADE.....	4.....	CONTACT UNIT SALES DEPT.
9		FINISH BLADE	4.....	CONTACT UNIT SALES DEPT.
10		COMBO FLOAT AND FINISH BLADE.....	4.....	CONTACT UNIT SALES DEPT.
11		ENDURO UNIVERSAL FINISH BLADE	4.....	CONTACT UNIT SALES DEPT.
12		ENDURO UNIVERSAL COMBO BLADE	4.....	CONTACT UNIT SALES DEPT.
13		REVERSIBLE COMBO BLADE.....	4.....	CONTACT UNIT SALES DEPT.
14		UNIVERSAL MOUNTING BAR	4.....	CONTACT UNIT SALES DEPT.
15	QS1869	SNAP PIN FOR QC BLADES.....	8.....	CONTACT UNIT SALES DEPT.
16	1434	PLUG, BLADE (FINISH BLADE ONLY)	4	
17	0202	SCREW, HHC 5/16"-18 X 1" ZINC	4	
18	0201	LUG, GUARD RING	4	

ENGINE SERVICE PARTS



ENGINE SERVICE PARTS

NO.	PART NO.	PART NAME	QTY.	REMARKS
1	17620Z4H900	CAP, FUEL	1.....	REPLACES P/N 17620Z4H030
2	17672Z4H000	FILTER, FUEL	1	
3	35120Z5T003	SWITCH, ENGINE STOP	1	
4◇	28462ZE2W11	ROPE, RECOIL STARTER	1	
4◆	28462ZV7003	ROPE, RECOIL STARTER	1	
5	28461Z5T305	GRIP, RECOIL STARTER	1	
6		FILTER, INNER AIR.....	1.....	NOT SOLD SEPARATELY
7◇	17218ZE2505	FILTER, OUTER AIR	1	
7◆	17218ZE3505	FILTER, OUTER AIR	1	
8	17210ZE2515	FILTER, DUAL AIR	1	
9◇	9807955876	SPARK PLUG	1	
9◆	9807956846	SPARK PLUG	1	

NOTICE

- ◇ HONDA GX270UT2QA2
- ◆ HONDA GX340UT2QA2/GX340UT2QAP2

TERMS AND CONDITIONS OF SALE — PARTS

PAYMENT TERMS

Terms of payment for parts are net 30 days.

FREIGHT POLICY

All parts orders will be shipped collect or prepaid with the charges added to the invoice. All shipments are F.O.B. point of origin. Multiquip's responsibility ceases when a signed manifest has been obtained from the carrier, and any claim for shortage or damage must be settled between the consignee and the carrier.

MINIMUM ORDER

The minimum charge for orders from Multiquip is \$15.00 net. Customers will be asked for instructions regarding handling of orders not meeting this requirement.

RETURNED GOODS POLICY

Return shipments will be accepted and credit will be allowed, subject to the following provisions:

1. A Returned Material Authorization must be approved by Multiquip prior to shipment.
2. To obtain a Return Material Authorization, a list must be provided to Multiquip Parts Sales that defines item numbers, quantities, and descriptions of the items to be returned.
 - a. The parts numbers and descriptions must match the current parts price list.
 - b. The list must be typed or computer generated.
 - c. The list must state the reason(s) for the return.
 - d. The list must reference the sales order(s) or invoice(s) under which the items were originally purchased.
 - e. The list must include the name and phone number of the person requesting the RMA.
3. A copy of the Return Material Authorization must accompany the return shipment.
4. Freight is at the sender's expense. All parts must be returned freight prepaid to Multiquip's designated receiving point.

5. Parts must be in new and resalable condition, in the original Multiquip package (if any), and with Multiquip part numbers clearly marked.
6. The following items are not returnable:
 - a. Obsolete parts. (If an item is in the price book and shows as being replaced by another item, it is obsolete.)
 - b. Any parts with a limited shelf life (such as gaskets, seals, "O" rings, and other rubber parts) that were purchased more than six months prior to the return date.
 - c. Any line item with an extended dealer net price of less than \$5.00.
 - d. Special order items.
 - e. Electrical components.
 - f. Paint, chemicals, and lubricants.
 - g. Decals and paper products.
 - h. Items purchased in kits.
7. The sender will be notified of any material received that is not acceptable.
8. Such material will be held for five working days from notification, pending instructions. If a reply is not received within five days, the material will be returned to the sender at his expense.
9. Credit on returned parts will be issued at dealer net price at time of the original purchase, less a 15% restocking charge.
10. In cases where an item is accepted, for which the original purchase document can not be determined, the price will be based on the list price that was effective twelve months prior to the RMA date.
11. Credit issued will be applied to future purchases only.

PRICING AND REBATES

Prices are subject to change without prior notice. Price changes are effective on a specific date and all orders received on or after that date will be billed at the revised price. Rebates for price declines and added charges for price increases will not be made for stock on hand at the time of any price change.

Multiquip reserves the right to quote and sell direct to Government agencies, and to Original Equipment Manufacturer accounts who use our products as integral parts of their own products.

SPECIAL EXPEDITING SERVICE

A \$35.00 surcharge will be added to the invoice for special handling including bus shipments, insured parcel post or in cases where Multiquip must personally deliver the parts to the carrier.

LIMITATIONS OF SELLER'S LIABILITY

Multiquip shall not be liable hereunder for damages in excess of the purchase price of the item with respect to which damages are claimed, and in no event shall Multiquip be liable for loss of profit or good will or for any other special, consequential or incidental damages.

LIMITATION OF WARRANTIES

No warranties, express or implied, are made in connection with the sale of parts or trade accessories nor as to any engine not manufactured by Multiquip. Such warranties made in connection with the sale of new, complete units are made exclusively by a statement of warranty packaged with such units, and Multiquip neither assumes nor authorizes any person to assume for it any other obligation or liability whatever in connection with the sale of its products. Apart from such written statement of warranty, there are no warranties, express, implied or statutory, which extend beyond the description of the products on the face hereof.

Effective: February 22, 2006

PARTS MANUAL

HERE'S HOW TO GET HELP

PLEASE HAVE THE MODEL AND SERIAL
NUMBER ON-HAND WHEN CALLING

UNITED STATES

Multiquip Corporate Office

18910 Wilmington Ave.
Carson, CA 90746
Contact: mq@multiquip.com

Tel. (800) 421-1244
Fax (310) 537-3927

Service Department

800-421-1244
310-537-3700

Fax: 310-537-4259

Technical Assistance

800-478-1244

Fax: 310-943-2238

MQ Parts Department

800-427-1244
310-537-3700

Fax: 800-672-7877
Fax: 310-637-3284

Warranty Department

800-421-1244
310-537-3700

Fax: 310-943-2249

CANADA

Multiquip

4110 Industriel Boul.
Laval, Quebec, Canada H7L 6V3
Contact: jmartin@multiquip.com

Tel: (450) 625-2244
Tel: (877) 963-4411
Fax: (450) 625-8664

UNITED KINGDOM

Multiquip (UK) Limited Head Office

Unit 2, Northpoint Industrial Estate,
Globe Lane,
Dukinfield, Cheshire SK16 4UJ
Contact: sales@multiquip.co.uk

Tel: 0161 339 2223
Fax: 0161 339 3226

© COPYRIGHT 2017, MULTIQUIP INC.

Multiquip Inc, the MQ logo are registered trademarks of Multiquip Inc. and may not be used, reproduced, or altered without written permission. All other trademarks are the property of their respective owners and used with permission.

This manual MUST accompany the equipment at all times. This manual is considered a permanent part of the equipment and should remain with the unit if resold.

The information and specifications included in this publication were in effect at the time of approval for printing. Illustrations, descriptions, references and technical data contained in this manual are for guidance only and may not be considered as binding. Multiquip Inc. reserves the right to discontinue or change specifications, design or the information published in this publication at any time without notice and without incurring any obligations.

Your Local Dealer is:



PN: 13408