

RIDE-ON TROWELS



MQ WHITEMAN

**Hydrostatic and Mechanical
Drive Models**



MQ Whiteman hydraulic ride-on power trowels deliver all the features contractors demand from high performance finishing equipment. Now, with innovative features such as SmartPitch, Power Management and Cruise Control we achieve maximum power and efficiency with minimum emissions. These remarkable machines will help improve your F-numbers and change the way you think about ride-on trowels.

Ergonomic seat reduces operator fatigue.

SmartPitch control synchronizes blade pitch of both rotors with a single touch.

Tubular steel tank design improves flow and cooling of hydraulic fluid.

Proportional hydraulic steering helps the operator move the machine effortlessly across the slab.

Frame design provides operator with excellent visibility of the finishing surface.

Service panels provide easy access to components for maintenance.

Integral steps are provided for convenience.

4 cylinder turbo diesel engine

Six lights are standard for illuminating night time and indoor work areas



Standard "Enduro" trowel blades last up to 50% longer than conventional blades.

Operator's platform includes a built-in storage box for hand tools and accessories.

(STXD6i shown. Called-out features are typical of all hydrostatic trowels.)

THE STX SERIES

With a span of ten feet, it provides maximum coverage while enabling you to produce floors with consistently superior levels of flatness. Twin six-blade rotors are driven by a powerful 55-HP* Yanmar turbo diesel engine chosen for its ability to withstand the tough concrete finishing environment.

Warranty

Power Trowels, Ride-On (Hydraulic) -

1 year parts and labor

Engine covered by manufacturer's warranty.
See Multiquip warranty terms for full details.



Six-Blade Spider

- Exclusive on STX and HTXD6i Hydrostatic Trowels.
- Achieve 33% more blade contact for the fastest, flattest finish possible.
- Obtain superior maneuverability and control.
- Reduce wear on pans and blades due to outstanding balance and weight distribution.





THE HTXD6i reaches a top rotor speed of 160 RPM and produces 20% more HP than previous models.

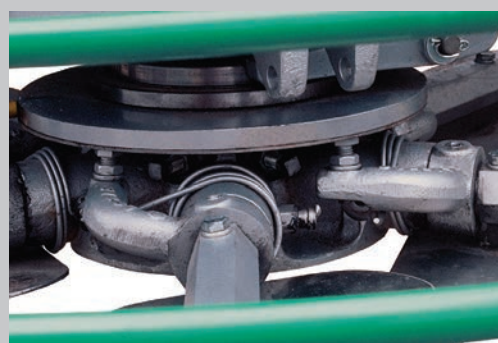
- **SmartPitch® control** allows the operator to synchronize the pitch of both rotors with the simple touch of a button.
- **Power Management** senses load and adjusts hydraulic pump stroke to ensure the unit operates at peak efficiency under all conditions. Eliminates engine bogging under severe loads.
- **Cruise Control** enables operator to electronically lock in preferred rotor speed and reduces fatigue.
- **Hydrostatic drive** supplies optimum power to each rotor assembly for reliable performance. It reduces service costs by eliminating maintenance items such as belts, clutches and gearboxes.
- **Non-overlapping rotors** are powered by independent drive motors that consistently deliver the high torque required for pan applications and the high speed for final finishing.
- **Retardant spray system** is actuated by controls located on the steering handles for uniform coverage of the slab surface.
- **Adjustable seat** features armrests and provides essential back support. All controls and warning lights are convenient to the operator.
- **Automatic shut-down** beneath the seat stops the rotors from turning if the operator stands up while the engine is running.
- **Proportional hydraulic steering** has been enhanced and offers improved responsiveness with minimal effort on the part of the operator.

Warranty

Power Trowels, Ride-On (Hydraulic) - 1 year parts and labor
Engine covered by manufacturer's warranty. See Multiquip warranty terms for full details.



Raised operator's platform includes lockable storage compartment



Spider assemblies feature long-lasting wear plates and spider hubs



Operator Controls are ergonomically designed and positioned for ease of use.



Hinged panels make servicing easy by allowing quick access to filters and trowel blades



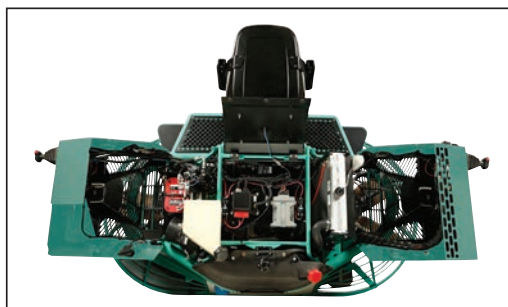
Removable steps provide quick access to trowel blades



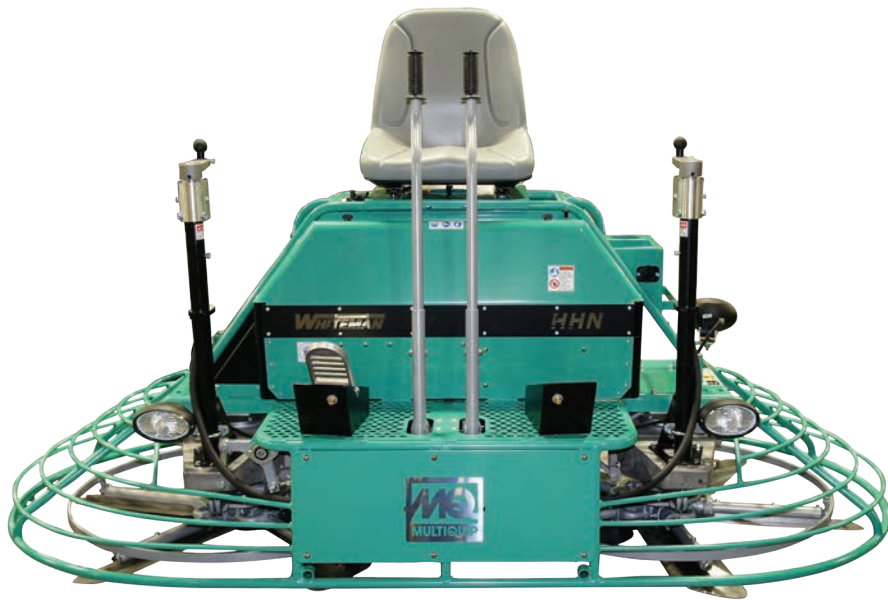
The New Whiteman HTXG6DF raises the bar for hydraulic ride-on power trowels. A reliable Power Solutions International (PSI) engine provides the flexibility of running on either gasoline or LPG fuel.



- **Powerful 2.4 liter gasoline-LPG engine** from Power Solutions International delivers the high torque needed for panning and high rotor speed for finishing concrete.
- **Engine power management** senses engine load and adjusts hydraulic pump stroke to allow engine to operate at peak efficiency.
- **Increased chassis rigidity and stability** achieved by lower center of gravity, reduces body roll, minimizes oversteer and improves steering feedback and operator control.
- **Six-blade spider** assemblies produce the flattest floors possible with 33% more blade contact.
- **SmartPitch™** control synchronizes blade pitch for both rotors with a single button.
- **Cruise control** standard on all hydraulic ride-on trowels.
- **LPG/Gasoline** option allows the operator to change from gasoline to LP at the touch of a switch.
- **Easy fill reservoir** for hydraulic oil.
- **LED lights** provide superior illumination during indoor or night time jobs.
- **Cup holder** and 12 Volt outlet for operator convenience on the job.
- **Electric fuel gauge** provides consistent, accurate fuel measurements.
- **New design** allows for better floor visibility.



Swing away panels provide full access to all service components.



THE HHNG5 SERIES is equipped with the coolest running gearbox in the industry. Power is supplied by a 35-HP Air Cooled Gasoline engine that spins twin five-blade rotors to a top speed of 180 RPM.

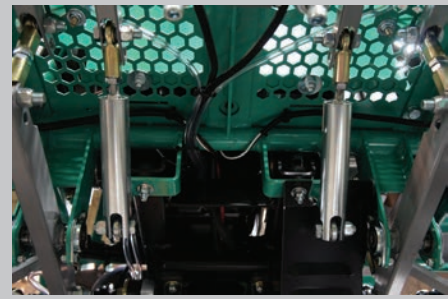
- **Operator is able to completely view the finishing surface** through the frame.
- **Retardant spray system is actuated** by controls located on the steering handles for uniform coverage of the slab surface.
- **Weather resistant polyethylene** fuel tank and battery box eliminates corrosion.
- **Halogen lights** provide illumination for night time or indoor work.
- **Servicing is made easy by a frame design** that allows quick access to fill ports and filters.
- **Rugged frame is made of chromemoly steel** to withstand the rigors of handling and transportation.
- **High-performance engines** withstand the rigors of concrete finishing.
- **Mechanical TwinPitch** control for fast, accurate adjustment of trowel blades.
- **Lifting points are built into the machine** for balanced lifting.
- **Spider assemblies can be economically rebuilt** and feature long-lasting wear plates and spider hubs.
- **Helical gearbox design is 33% more efficient** than worm drive designs resulting in cooler operating temperatures and longer service life.

Warranty

Power Trowels, Ride-On Mechanical Models - 1 year parts and labor

HHN- series Helical Gearbox - 3 years parts and labor

Engine covered by manufacturer's warranty. See MultiQuip terms for full details.



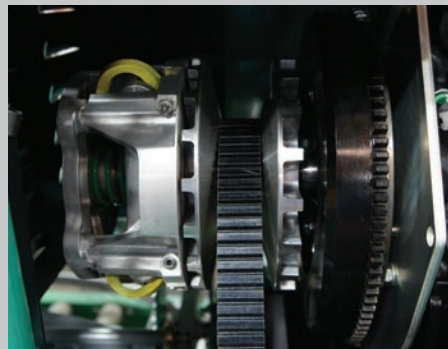
Patented steering assist

makes controlling the machine remarkably easy and reduces operator fatigue.



Automotive style CV-joints

ensure the consistent transfer of power to each gearbox.



Power is transmitted by to the rotors by **continuously variable transmission (CVT)** that adjusts the drive ratio to obtain optimum torque and speed during all phases of concrete finishing.



Proven heavy-duty worm-drive design features large oil capacities and integral cooling fans to reduce heat build-up and are standard equipment on HTN and JWN Series machines.

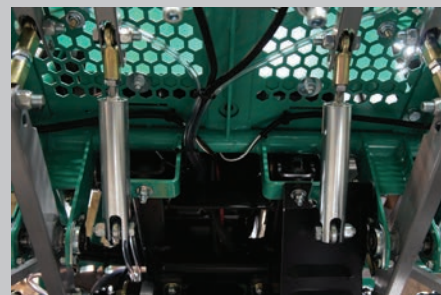
THE HTN SERIES

The entry level eight foot mechanical. Models are available with Kohler carbureted 25HP or the fuel injected 28 HP gasoline engines, along with all the features you expect to find on a Whiteman ride-on trowel.



THE JWN SERIES

These versatile six-foot machines are ideal for jobs up to 6,000 sq. ft. Their lightweight design is ideal for high-rises and enable contractors to get on the slab faster. The JWN is equipped with heavy-duty gearboxes and a continuously variable transmission that delivers a lightning fast rotor speed of 180 RPM.



Patented steering assist

makes controlling the machine remarkably easy and reduces operator fatigue.



Automotive style CV-joints

ensure the consistent transfer of power to each gearbox.



TwinPitch control, available on all models, enables the operator to simultaneously control the pitch of both rotors with minimal effort yet still allows for individual pitch control.

Warranty

HTN/JWN Series Ride-On Mechanical Power Trowels - 1 year parts and labor

HTN/JWN-SERIES Worm Drive Gearbox - 2 years parts and labor

Engine covered by manufacturer's warranty. See Multiquip terms for full details.

Trowel Blades and Pans



BLADES AND PANS

Model	Blades for 24" Diameter Rotors (.075 steel thickness)		
C244	Combo Blade 5" x 9.25"	x	
Blades for 30" Diameter Rotors (Finish .062"; Combo .075" steel thickness)			
F300	Finish Blade 6" x 10.5"	x	
C334	Combo Blade 8" x 10.5"	x	
Blades for 36" Diameter Rotors (Finish .062"; Combo .075" steel thickness)			
C844	Combo Blade 8" x 14"	x	
C844R	Combo Blade 8" x 14"		x
CL954F	Float Blade 10" x 14"	x	x
F900	Finish Blade 6" x 14"	x	
Quick Change Blades for 36" Diameter Rotors (Finish .062"; Combo .075" steel thickness)			
QB1857	Blade Mounting Bar, One (1) required per trowel arm	x	x
QC1871	Combo Blade 8" x 14"	x	
QF1872	Finish Blade 6" x 14"	x	
QS1869	Snap Pin, Two (2) required per trowel arm	x	x
Enduro Blades for 36" Diameter Rotors (Finish .092"; Combo .092" steel)			
C10844	Combo Blade 8" x 14"		x
F10900	Finish Blade 6" x 14"		x
Enduro-Quick Change Blades for 36" Diameter Rotors (Finish .092"; Combo .092" steel thickness)			
QC10871	Combo Blade 6" x 14"		x
QF10872	Finish Blade 8" x 14"		x
Blades for 46/48" Diameter Rotors (Finish .062"; Combo .075"; Float 12 G/.105" steel thickness)			
C464	Combo Blade 8" x 18"	x	
C464R	Combo Blade 8" x 18"		x
CL444F	Float Blade 10" x 18"	x	x
F400	Finish Blade 6" x 18"	x	
Quick Change Blades for 46/48" Diameter Rotors (Finish .062"; Combo .075" steel thickness)			
QB1856	Blade Mounting Bar, One (1) required per trowel arm	x	x
QC1873	Combo Blade 8" x 18"	x	
QF1874	Finish Blade 6" x 18"	x	
QS1869	Snap Pin, Two (2) required per trowel arm	x	x
Enduro Blades for 46/48" Diameter Rotors (Finish .092"; Combo .092" steel thickness)			
C10464	Combo Blade 8" x 18"		x
F10400	Finish Blade 6" x 18"		x
RC818	Reversible Combo Blade 8" x 18"		x
Enduro-Quick Change Blades for 46/48" Diameter Rotors (Finish .092"; Combo .092" steel thickness)			
QC10873	Combo Blade 6" x 18"		x
QF10874	Finish Blade 8" x 18"		x
Blades for 48" Diameter 6-Blade Rotors (Finish .075"; Combo .075" steel thickness)			
F616	Finish Blade 6" x 16"		x
C8160	Comb Blade 8.125" x 16"		x
Enduro Blades for 48" Diameter 6-Blade Rotors (Finish .092"; Combo .092" steel thickness)			
F10616	Finish Blade 6" x 16", 48"		x
C10816	Combo Blade 8.125" x 16"		x
RC816	Reversible Comb Blade 8.125" x 16"		x
Enduro Blades for 60" Diameter Rotors (Finish .092"; Combo .092" steel thickness)			
C11997	Combo Blade 8" x 23"		x
F11990	Finish Blade 6" x 23"		x
Model	Float Pan Description		
20646	Latch Pin for Float Pans	x	x
21550	24", 4-Blade Flat Pan	x	
2870	36", 4-Blade Flat Pan w/block	x	
2871	46", 4-Blade Flat Pan w/block	x	
11032	36", 4-Blade Superflat Pan		x
11017W	46", 4-Blade Superflat Pan		x
12271	46", 4-Blade Flat Pan	x	x
12272	46", 5-Blade Superflat Pan		x
12272WZ	46", 5-Blade Flat Pan, Z Clip		x
12093W	46", 5-Blade Superflat Pan		x
12093WZ	46", 5-Blade Superflat Pan, Z Clip		x
32026W	46", 6-Blade Superflat Pan (HTXD6I only)		x
32608W	46", 6-Blade Superflat Pan (HTXG6DF only)		x
32608Z	46", 6-Blade Flat Pan, Z Clip		x
32608WZ	46", 6-Blade Super Flat Pan, Z Clip All		x
11979	60", 6-Blade Superflat Pan		x
11979WZ	60", 6-Blade Superflat Pan, Z Clip		x

Specifications

Model	Engine	Engine Cooling	HP*	Blades Per Rotor	Rotor RPM	Path Width in. (cm)	Fuel Tank Capacity gal. (ltr)	Run Time gal./hr. (ltr/hr)	LxWxH in. (cm)	Operating Weight lbs. (kg)	Wheel Kit
Twin 60" Non-Overlapping											
STXD6i	Yanmar Turbo Diesel	Liquid	55	6	10-130	117 (297)	11 (42)	2.81 (10.63)	125 x 65 x 57 (318 x 165 x 145)	2270 (1030)	EMR3
Twin 48" Non-Overlapping											
HTXD6i	Yanmar Turbo Diesel	Liquid	55	6	10-160	92 (233)	11 (42)	2.36 (8.93)	95 x 48 x 57 (241 x 122 x 145)	2,100 (952)	EMR3
HTXG6DF	Power Solutions International (PSI)	Liquid	68	6	10-160	92 (233)	11 (42)	1.46 (5.52)	95 x 48 x 57 (241 x 122 x 145)	2,133 (968.6)	EMR3
Twin 48" Non-Overlapping											
HHNG5	Vanguard	Air	35	5	0-180	92 (233)	5 (19)	2 (7.57)	95 x 48 x 59 (318x165x145)	1083 (491)	EMR2 or EMR3
Twin 48" Non-Overlapping											
HTN27KTCSL	Kohler	Air	25	4	40-140	91 (231)	4.4 (17)	2 (7.57)	95 x 48 x 46 (241 x 122 x 117)	780 (354)	EMR2
HTN28KTCSL	Kohler	Air	28	4	40-140	91 (231)	4.4 (17)	2 (7.57)	95 x 48 x 46 (241 x 122 x 117)	800 (363)	EMR2
Twin 36" Non-Overlapping											
JWN24HTCSL	Honda	Air	20	4	36-180	75 (191)	2.2 (8)	1.71 (6.47)	77 x 39 x 48 (196 x 99 x 122)	685 (209)	EMR2

Accessories



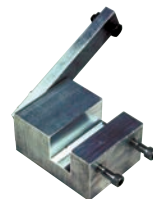
EMR 3

- Easy Mover transport dolly for HTX, STX, HHN, and HHX model ride-on trowels. Set of 2 jack stands (left/right) with 2 pneumatic tires per side.



EMR 2

- Easy Mover transport dolly for JWN, HTN, HHX and HHN model ride-on trowels. Includes 4 pneumatic tires and T-handle control.



Trowel Arm Adjustment Fixture

This service aid ensures trowel arms are set accurately for peak performance

- 1817 - Fits J,B, JTO, JTN, JWN series trowels with 1" diameter arms.
- 9177 - Fits HDA, HTN, HHN, STX, HTX, HHX and series trowels with 1 1/4" diameter arms

**For current production units only. May not adapt to older models.

Models listed are equipped with TwinPitch control, Halogen Lights and Spray System. Batteries are included.

* Engine power ratings are calculated by the individual engine manufacturer and the rating method may vary among engine manufacturers. Multiquip Inc. and its subsidiary companies makes no claim, representation or warranty as to the power rating of the engine on this equipment and disclaims any responsibility or liability of any kind whatsoever with respect to the accuracy of the engine power rating. Users are advised to consult the engine manufacturer's owners manual and its website for specific information regarding the engine power rating.

Your Multiquip dealer is:

Connect with us on



All features and specifications are subject to change without notice.
Version (0815)



www.multiquip.com
800.421.1244