

**MQ MULTIGUIP** **WHITEMAN**  
**Slab Armor**

# Refining the art of concrete finishing.

**SlabArmor** is a two-step process that enables you to:

- Consolidate the surface cap producing a highly refined, less permeable slab.
- Attain abrasion resistance and wear characteristics comparable to trap rock or dry-shake hardeners.
- Enhance and protects both natural and integral colored concrete.
- Reduce maintenance expenses and upkeep requirements over the life of the slab.

**SlabArmor Starter** penetrates the cap up to 27mm while **SlabArmor Closer** cross-links with Starter up to a depth of 13 mm resulting a denser, more abrasion resistant floor.

**Ideal applications** include industrial flatwork, residential construction and big box projects.



DAY ONE - 0 HOURS

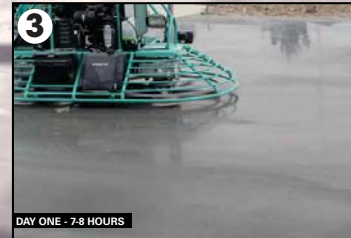
**Concrete Placement**

Following screed application a check-rod is used to straighten the surface.



DAY ONE - 2-6 HOURS

**Starter** is applied 3 times during the floating process and worked completely into the surface using a trowel equipped with float pans.



DAY ONE - 7-8 HOURS

**The floor is troweled** until the desired level of burnish/finish is achieved.



DAY ONE - 8 HOURS

**Closer** is sprayed on surface once power troweling is completed and worked in with a foxtail broom, keep wet with product for 30 minutes.



**Slab Armor Closer** is absorbed into the concrete cross-linking with starter. The result is a denser more abrasion resistant floor.

**EarthSmart™**

A benefit on jobs with LEED requirements

**Download technical information now.**



\*Time stamps shown for illustrative purposes only. Actual setup times for concrete will vary according to mix designs and other environmental factors.