

OPERATION AND PARTS MANUAL



COLLOMIX[®] SERIES MODEL TMS2000 COMPACT MIXER

Revision #1 (09/14/10)

To find the latest revision of this
publication, visit our website at:
www.multiquip.com



THIS MANUAL MUST ACCOMPANY THE EQUIPMENT AT ALL TIMES.

SILICOSIS/RESPIRATORY WARNINGS

⚠️ WARNING



SILICOSIS WARNING

Grinding/cutting/drilling of masonry, concrete, metal and other materials with silica in their composition may give off dust or mists containing crystalline silica. Silica is a basic component of sand, quartz, brick clay, granite and numerous other minerals and rocks. Repeated and/or substantial inhalation of airborne crystalline silica can cause serious or fatal respiratory diseases, including silicosis. In addition, California and some other authorities have listed respirable crystalline silica as a substance known to cause cancer. When cutting such materials, always follow the respiratory precautions mentioned above.

⚠️ WARNING



RESPIRATORY HAZARDS

Grinding/cutting/drilling of masonry, concrete, metal and other materials can generate dust, mists and fumes containing chemicals known to cause serious or fatal injury or illness, such as respiratory disease, cancer, birth defects or other reproductive harm. If you are unfamiliar with the risks associated with the particular process and/or material being cut or the composition of the tool being used, review the material safety data sheet and/or consult your employer, the material manufacturer/supplier, governmental agencies such as OSHA and NIOSH and other sources on hazardous materials. California and some other authorities, for instance, have published lists of substances known to cause cancer, reproductive toxicity, or other harmful effects.

Control dust, mist and fumes at the source where possible. In this regard use good work practices and follow the recommendations of the manufacturers or suppliers, OSHA/NIOSH, and occupational and trade associations. Water should be used for dust suppression when wet cutting is feasible. When the hazards from inhalation of dust, mists and fumes cannot be eliminated, the operator and any bystanders should always wear a respirator approved by NIOSH/MSHA for the materials being used.

TABLE OF CONTENTS

TMS2000 Compact Mixer

Silicosis/Respiratory Warnings	2
Table Of Contents	3
Parts Ordering Procedures.....	4
Safety Information	5-7
Specifications	8
General Information.....	9
Components	10-11
Operation.....	12-13
Maintenance	14
Troubleshooting Chart	15
Explanation Of Code In Remarks Column.....	16
Suggested Spare Parts	17

Component Drawings

Mixer Assy	18-21
Terms And Conditions Of Sale — Parts	22

NOTICE

Specifications and part numbers are subject to change without notice.

PARTS ORDERING PROCEDURES

www.multiquip.com

Ordering parts has never been easier! Choose from three easy options:

Effective:
January 1st, 2006



Order via Internet (Dealers Only):

Order parts on-line using Multiquip's SmartEquip website!

- View Parts Diagrams
- Order Parts
- Print Specification Information



If you have an MQ Account, to obtain a Username and Password, E-mail us at: parts@multiquip.com.

To obtain an MQ Account, contact your District Sales Manager for more information.

Goto www.multiquip.com and click on **Order Parts** to log in and save!

Use the **internet** and qualify for a **5% Discount** on *Standard orders* for all orders which include complete part numbers.*

Note: Discounts Are Subject To Change



Order via Fax (Dealers Only):

All customers are welcome to order parts via Fax.

Domestic (US) Customers dial:
1-800-6-PARTS-7 (800-672-7877)

Fax your order in and qualify for a **2% Discount** on *Standard orders* for all orders which include complete part numbers.*

Note: Discounts Are Subject To Change



Order via Phone: Domestic (US) Dealers Call:
1-800-427-1244

Non-Dealer Customers:

Contact your local Multiquip Dealer for parts or call 800-427-1244 for help in locating a dealer near you.



International Customers should contact their local Multiquip Representatives for Parts Ordering information.

When ordering parts, please supply:

- | | |
|-------------------------------------------------------------------------------|----------------------------------------------------------------------------------------|
| <input type="checkbox"/> Dealer Account Number | <input type="checkbox"/> Specify Preferred Method of Shipment: |
| <input type="checkbox"/> Dealer Name and Address | <input checked="" type="checkbox"/> UPS/Fed Ex <input checked="" type="checkbox"/> DHL |
| <input type="checkbox"/> Shipping Address (if different than billing address) | <input type="checkbox"/> Priority One <input checked="" type="checkbox"/> Truck |
| <input type="checkbox"/> Return Fax Number | <input type="checkbox"/> Ground |
| <input type="checkbox"/> Applicable Model Number | <input type="checkbox"/> Next Day |
| <input type="checkbox"/> Quantity, Part Number and Description of Each Part | <input type="checkbox"/> Second/Third Day |

NOTICE

All orders are treated as *Standard Orders* and will ship the same day if received prior to 3PM PST.

WE ACCEPT ALL MAJOR CREDIT CARDS!



SAFETY INFORMATION


Do not operate or service the equipment before reading the entire manual. Safety precautions should be followed at all times when operating this equipment. Failure to read and understand the safety messages and operating instructions could result in injury to yourself and others.




SAFETY MESSAGES

The four safety messages shown below will inform you about potential hazards that could injure you or others. The safety messages specifically address the level of exposure to the operator and are preceded by one of four words: **DANGER, WARNING, CAUTION** or **NOTICE**.


SAFETY SYMBOLS

 **DANGER**

Indicates a hazardous situation which, if not avoided, **WILL** result in **DEATH** or **SERIOUS INJURY**.

 **WARNING**

Indicates a hazardous situation which, if not avoided, **COULD** result in **DEATH** or **SERIOUS INJURY**.

 **CAUTION**

Indicates a hazardous situation which, if not avoided, **COULD** result in **MINOR** or **MODERATE INJURY**.

NOTICE

Addresses practices not related to personal injury.

Potential hazards associated with the operation of this equipment will be referenced with hazard symbols which may appear throughout this manual in conjunction with safety messages.

GENERAL SAFETY

CAUTION

- **NEVER** operate this equipment without proper protective clothing, shatterproof glasses, respiratory protection, hearing protection, steel-toed boots and other protective devices required by the job or city and state regulations.



- Avoid wearing jewelry or loose fitting clothes that may snag on the controls or moving parts as this can cause serious injury.

- **NEVER** operate this equipment when not feeling well due to fatigue, illness or when under medication.



- **NEVER** operate this equipment under the influence of drugs or alcohol.



- **ALWAYS** clear the work area of any debris, tools, etc. that would constitute a hazard while the equipment is in operation.

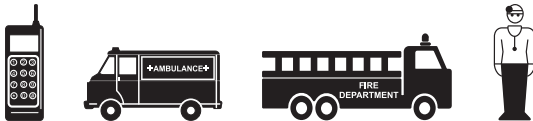
- **ALWAYS** check the equipment for loosened threads or bolts before starting.

- **DO NOT** use the equipment for any purpose other than its intended purposes or applications.

SAFETY INFORMATION


NOTICE

- This equipment should only be operated by trained and qualified personnel 18 years of age and older.
- Whenever necessary, replace nameplate, operation and safety decals when they become difficult read.
- Manufacturer does not assume responsibility for any accident due to equipment modifications. Unauthorized equipment modification will void all warranties.
- **NEVER** use accessories or attachments that are not recommended by Multiquip for this equipment. Damage to the equipment and/or injury to user may result.
- **ALWAYS** know the location of the nearest **fire extinguisher**. 
- **ALWAYS** know the location of the nearest **first aid kit**. 
- **ALWAYS** know the location of the nearest phone or **keep a phone on the job site**. Also, know the phone numbers of the nearest **ambulance, doctor** and **fire department**. This information will be invaluable in the case of an emergency.




MIXER SAFETY

DANGER

- **NEVER** operate the equipment in an explosive atmosphere or near combustible materials. An explosion or fire could result causing severe **bodily harm or even death**. 
- **DO NOT** mix **flammable** or **explosive** substances.

WARNING

- **NEVER** place your hands inside the drum while starting or operating this equipment. 
- **NEVER** disconnect any **emergency or safety devices**. These devices are intended for operator safety. Disconnection of these devices can cause severe injury, bodily harm or even death. Disconnection of any of these devices will void all warranties.
- Before operating mixer, ensure that guard hood is in position and correctly fitted.

CAUTION

- **NEVER** lubricate components or attempt service on a running machine.

NOTICE

- **ALWAYS** keep the machine in proper running condition.
- **ALWAYS** ensure mixer is on level ground before mixing
- **ALWAYS** operate and load the mixer from the front only.
- Fix damage to machine and replace any broken parts immediately.
- **ALWAYS** store equipment properly when it is not being used. Equipment should be stored in a clean, dry location out of the reach of children and unauthorized personnel.

SAFETY INFORMATION

ELECTRIC MOTOR SAFETY

NOTICE

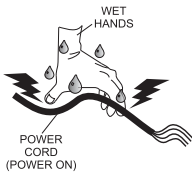
- Operate electric motor only at the specified voltage indicated on the nameplate.
- **DO NOT** spray water onto electric motor.
- **ALWAYS** disconnect AC power plug from power source before moving mixer, changing mixing tool, or performing maintenance..
- **ALWAYS** make sure the ON/OFF switch on the electric motor is in the OFF position when not in use and before inserting the mixer's power plug into an AC receptacle.



Power Cord/Cable Safety

DANGER

- **NEVER** let power cords or cables lay in water.
- **NEVER** use **damaged** or **worn** cables or cords when connecting equipment to generator. Inspect for cuts in the insulation.
- **NEVER** grab or touch a live power cord or cable with wet hands. The possibility exists of **electrical shock, electrocution or death.**
- Make sure power cables are securely connected. Incorrect connections may cause electrical shock and damage to the mixer.



CAUTION

- Ensure that cables and cords will not be tripped over or trapped underneath the mixer.
- Never use the cable to pull out the plug from the power source.

NOTICE

- **ALWAYS** make certain that proper power or extension cord has been selected for the job.
- Protect the cable from heat, oil, and sharp edges.

TRANSPORTING SAFETY

CAUTION

- **NEVER** allow any person or animal to stand underneath the equipment while lifting.

NOTICE

- **ALWAYS** make sure forklift forks are inserted into pockets (if applicable) as far as possible when lifting the mixer.
- **ALWAYS** shutdown motor before transporting.
- **NEVER** lift the equipment while the motor is running.
- Tighten fuel tank cap securely and close fuel cock to prevent fuel from spilling.
- **DO NOT** lift machine to unnecessary heights.
- **ALWAYS** tie down equipment during transport by securing the equipment with rope.

Table 1. TMS2000 Specifications	
Capacity	17 gals./2 cu ft.
Power Supply	110V / 15A
Motor	2.0 HP
Mixing Tool Speed	49 rpm
Capacity	20 gallons (3 cu. ft.)
Weight	228 lb (103 kg)
Dimensions	28 x 27 x 47 in (720 x 690 x 1190 mm)
Sound Level	64 dB(A)

GENERAL INFORMATION

The MQ TMS2000 Compact Mixer offers professional solutions for the preparation of bagged ready-mixed materials. This compact and highly maneuverable mixer is ideal for masons, stucco workers, plasterers, and tile setters.

FEATURES

The TMS2000 has the following features:

- Three offset mixing arms for improved mixing; easily removed for cleaning.
- Protective locking grille with bag opener.
- Roller wheels for vehicle loading.
- Operating switch with undervoltage protection.
- Powerful 110V/2HP electric motor.
- Easy slide discharge handle.
- Designed for bucket or wheelbarrow discharging.
- Oversized wheels for easy jobsite transportation.
- Fits through 30-inch wide doorways.
- Folding step.

EXTENSION CABLES

When an extension cable is used, it should be a 3-wire configuration that includes a ground wire that conforms to UL code. Choose the correct size of an extension cord as shown in Table 2. Remember **distance** affects the wire size of the extension cable. Ensure that the extension cable is carefully laid out avoiding **wet areas**, **sharp edges** and locations where vehicles might run over it.

Table 2. Extension Cord Sizes

Ampere Rating Range	Volts	Length of Cord in Feet					
	115V	25 ft.	50 ft.	100 ft.	150 ft.	200 ft.	250 ft.
		230V	50 ft.	100 ft.	200 ft.	300 ft.	400 ft.
0-2	18	18	18	16	16	14	
2-3	18	18	16	14	14	12	
3-4	18	18	16	14	12	12	
4-5	18	18	14	12	12	10	
5-6	18	16	14	12	10	10	
6-8	18	16	12	10	10	8	
8-10	18	14	12	10	8	8	
10-12	16	14	10	8	8	6	
12-14	16	12	10	8	6	6	
14-16	16	12	10	8	6	6	
16-18	14	12	8	8	6	4	
18-20	14	12	8	6	6	4	



Figure 1. TMS2000 Components

COMPONENTS

Refer to Figure 1 for the location of the following mixer components.

1. **Safety Grid** — Used to cover the mixer for protection from direct access during mixing. Mixing only starts when cover is completely closed and locked in place.
2. **Bag Opener** — Used to easily tear open the bag of packed mixture prior to filling the tub.
3. **Mixing Arms (3)** — Used to mix material. Can be easily removed for cleaning.
4. **Mixing Tub** — Holds up to 20 gallons of mixing material.
5. **Discharge Handle** — Slides easily to empty contents of the mixing tub through an opening in the base.
6. **Bucket Ledge** — Accommodates placement of a bucket or can collapse to allow for a wheelbarrow or similar dumping vessel.
7. **Mixer Leg (2)** — Designed to ensure mixer stands securely in place during mixing.
8. **Wheels** — Oversized to easily transport mixer on job site.
9. **Step** — Allows the operator to access and fill up mixing tub more easily. Can be conveniently folded when not in use.
10. **Motor** — Provides 2 HP, 110V power to the mixer.
11. **ON/OFF Switch** — Turns the mixer ON or OFF.
12. **Roller Wheels** — Used to easily move mixer when loading into a vehicle.

SETUP

1. Set up the machine on a solid, level base.
2. When setting up the machine, make sure the mixer can be emptied without obstruction.

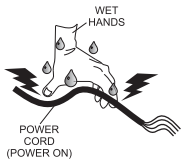
POWER CONNECTION

CAUTION

Before plugging the power cable, check and make sure that the ON/OFF switch is off.

3. Connect the mixer power cable to a 110V, 60 Hz power source. Make sure you conform to the specifications on the nameplate of the mixer.
4. If necessary, use an extension cord (see Table 2) of adequate current carrying capacity. **NEVER** use a **worn** or **frayed** extension cord. Insert the electric motor's power plug into one end of the extension cord.

DANGER



NEVER touch the power cord with **wet hands** or while **standing in water** when it is connected to a power source. The possibility exists of electrical shock (electrocution) even death. **NEVER** spray water directly on the electric motor.

NOTICE

To prevent personnel from tripping over the extension cord, position the extension cord so that it lays flat and is not curled.

OPERATING THE MIXER

Mixed Production

1. Close safety grid and make sure it locks in place. See Figure 2. An electric safety shutdown prevents the mixer from operating while the safety grid is open.

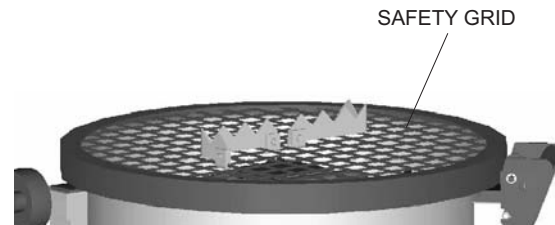


Figure 2. Safety Grid

2. Turn on the ON/OFF switch.

NOTICE

In the event of a power failure, the mixer will switch off automatically. Turn on ON/OFF switch again to restart mixer. The mixer will also automatically switch off in the event of overload or overheating. Restart the mixer after letting it cool down.

3. Fill the mixing tub with water and aggregate (sand, etc.)
4. Add binding agent (cement, lime, etc.).
5. Repeat steps 4 and 5 until required mixture ratio has been achieved.
6. Blend mixture well.
7. When mixing is completed, turn off the ON/OFF switch.

NOTICE

Consult a professional regarding the composition and quality of the material being mixed.

Prepared (*commercially available*) Mixture Production

1. Close safety grid and make sure it locks in place. An electric safety shutdown prevents the mixer from operating while the safety grid is open.
2. Turn on the ON/OFF switch.
3. Fill mixing tub with the required volume of water.

OPERATION

4. Open the sack of the packed mixture with the bag opener on the safety grid and empty mixture into the mixing tub. See Figure 3.
3. Slide the discharge handle back to the left when the mixing tub is empty. See Figure 5.



Figure 3. Filling Mixing Tub

5. Blend mixture well.
6. When mixing is completed, turn off the ON/OFF switch.

EMPTYING THE MIXING TUB

1. Make sure a bucket or wheelbarrow is placed right under the base opening of the mixer.
2. Activate the discharge handle by sliding it all the way to the right to start flow of mixture into the bucket or wheelbarrow. See Figure 4.

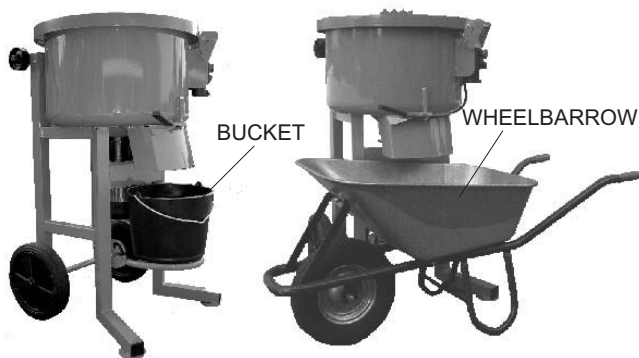


Figure 4. Emptying the Mixer



Figure 5. Activating Discharge Handle

⚠ CAUTION

ALWAYS disconnect the mixer from the power supply before cleaning or performing any maintenance.

⚠ CAUTION

To assure product safety and reliability, repairs, maintenance, and adjustments should be performed by an authorized service center or qualified technician to prevent any misplaced wires and components that could cause serious hazards.

1. Clean the mixer and mixing arms after every use. Remove the agitator head to clean. See Figure 6.

3. Replace all damaged or bent machine parts.
4. Replace mixing tub and mixing arms with genuine replacement parts to guarantee that the machine will work properly.



Figure 6. Removing the Agitator Head

NOTICE

When cleaning the mixer, do not spray the motor and switch directly with a water jet. Do not hit the mixing arms with hard objects such as a hammer or a shovel.

2. Apply grease to all moving parts at regular intervals.

TROUBLESHOOTING CHART

Table 3. Mixer Troubleshooting

Symptom	Possible Problem	Solution
Mixer does not start.	No main voltage?	Check fuse protection..
	Defective Cable or Plug?	Have cable or plug checked and replaced by an electrician.
	Motor Overloaded?	Allow motor to cool down.
	Defective switch or cable in switch is not connected?	Check switch and replace if necessary.
	Safety grid is not closed?	Close safety grid properly.
Motor hums but does not start.	Mixing Apparatus blocked?	Switch off mixer, pull out main power plug and clean mixing apparatus.
	Too much mixture in mixing tub?	Activate ON/OFF switch a few times. If still does not start, empty mixing tub of some mixture.
	Defective Condenser?	Call your dealer for repair information.
Motor does not turn off when safety grid is open.	Safety Shutdown not triggered?	Check safety shutdown and replace if necessary.
Mixer starts up but becomes blocked at low load and may switch off automatically.	Extension lead is too long or its cross-section is too small. Or, socket is too far from main connection and the connecting wire cross-section is too small?	Extension lead must be at least 1.5 to 2.5 mm ² for a maximum length of 25 m. The cross-section of longer cables must be at least 2.5 mm ² .

EXPLANATION OF CODE IN REMARKS COLUMN

The following section explains the different symbols and remarks used in the Parts section of this manual. Use the help numbers found on the back page of the manual if there are any questions.

NOTICE

The contents and part numbers listed in the parts section are subject to change **without notice**. Multiquip does not guarantee the availability of the parts listed.

SAMPLE PARTS LIST

NO.	PART NO.	PART NAME	QTY.	REMARKS
1	12345	BOLT	1	INCLUDES ITEMS W/%
2%		WASHER, 1/4 IN.		NOT SOLD SEPARATELY
2%	12347	WASHER, 3/8 IN. ...	1	MQ-45T ONLY
3	12348	HOSE	A/R	MAKE LOCALLY
4	12349	BEARING	1	S/N 2345B AND ABOVE

NO. Column

Unique Symbols — All items with same unique symbol

(@, #, +, %, or >) in the number column belong to the same assembly or kit, which is indicated by a note in the “Remarks” column.

Duplicate Item Numbers — Duplicate numbers indicate multiple part numbers, which are in effect for the same general item, such as different size saw blade guards in use or a part that has been updated on newer versions of the same machine.

NOTICE

When ordering a part that has more than one item number listed, check the remarks column for help in determining the proper part to order.

PART NO. Column

Numbers Used — Part numbers can be indicated by a number, a blank entry, or TBD.

TBD (To Be Determined) is generally used to show a part that has not been assigned a formal part number at the time of publication.

A blank entry generally indicates that the item is not sold separately or is not sold by Multiquip. Other entries will be clarified in the “Remarks” Column.

QTY. Column

Numbers Used — Item quantity can be indicated by a number, a blank entry, or A/R.

A/R (As Required) is generally used for hoses or other parts that are sold in bulk and cut to length.

A blank entry generally indicates that the item is not sold separately. Other entries will be clarified in the “Remarks” Column.

REMARKS Column

Some of the most common notes found in the “Remarks” Column are listed below. Other additional notes needed to describe the item can also be shown.

Assembly/Kit — All items on the parts list with the same unique symbol will be included when this item is purchased.

Indicated by:

“INCLUDES ITEMS W/(unique symbol)”

Serial Number Break — Used to list an effective serial number range where a particular part is used.

Indicated by:

“S/N XXXXX AND BELOW”

“S/N XXXX AND ABOVE”

“S/N XXXX TO S/N XXX”

Specific Model Number Use — Indicates that the part is used only with the specific model number or model number variant listed. It can also be used to show a part is NOT used on a specific model or model number variant.

Indicated by:

“XXXXX ONLY”

“NOT USED ON XXXX”

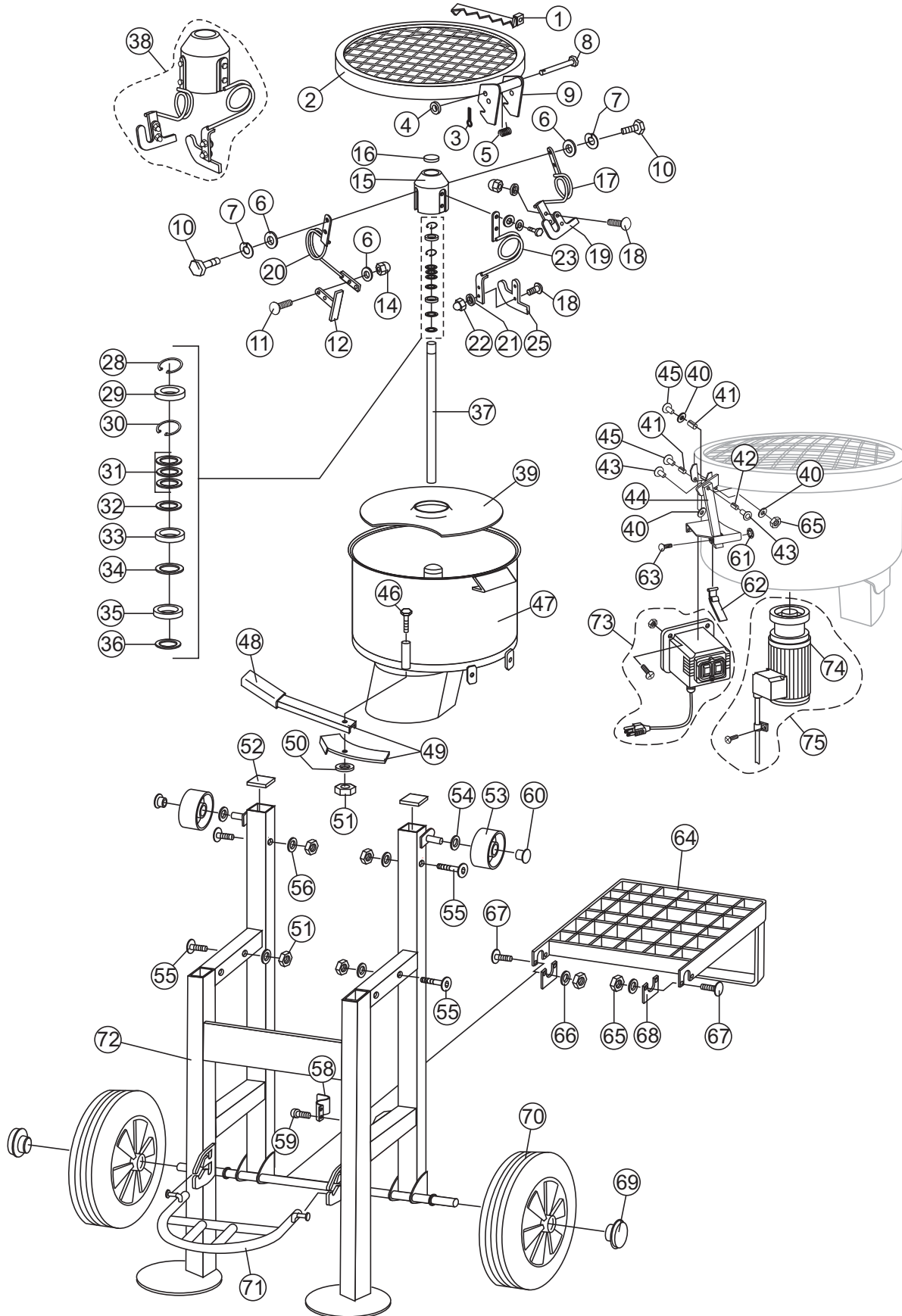
“Make/Obtain Locally” — Indicates that the part can be purchased at any hardware shop or made out of available items. Examples include battery cables, shims, and certain washers and nuts.

“Not Sold Separately” — Indicates that an item cannot be purchased as a separate item and is either part of an assembly/kit that can be purchased, or is not available for sale through Multiquip.

SUGGESTED SPARE PARTS

TMS2000 FORCED ACTION MIXERS (NO SUGGESTED SPARE PARTS)

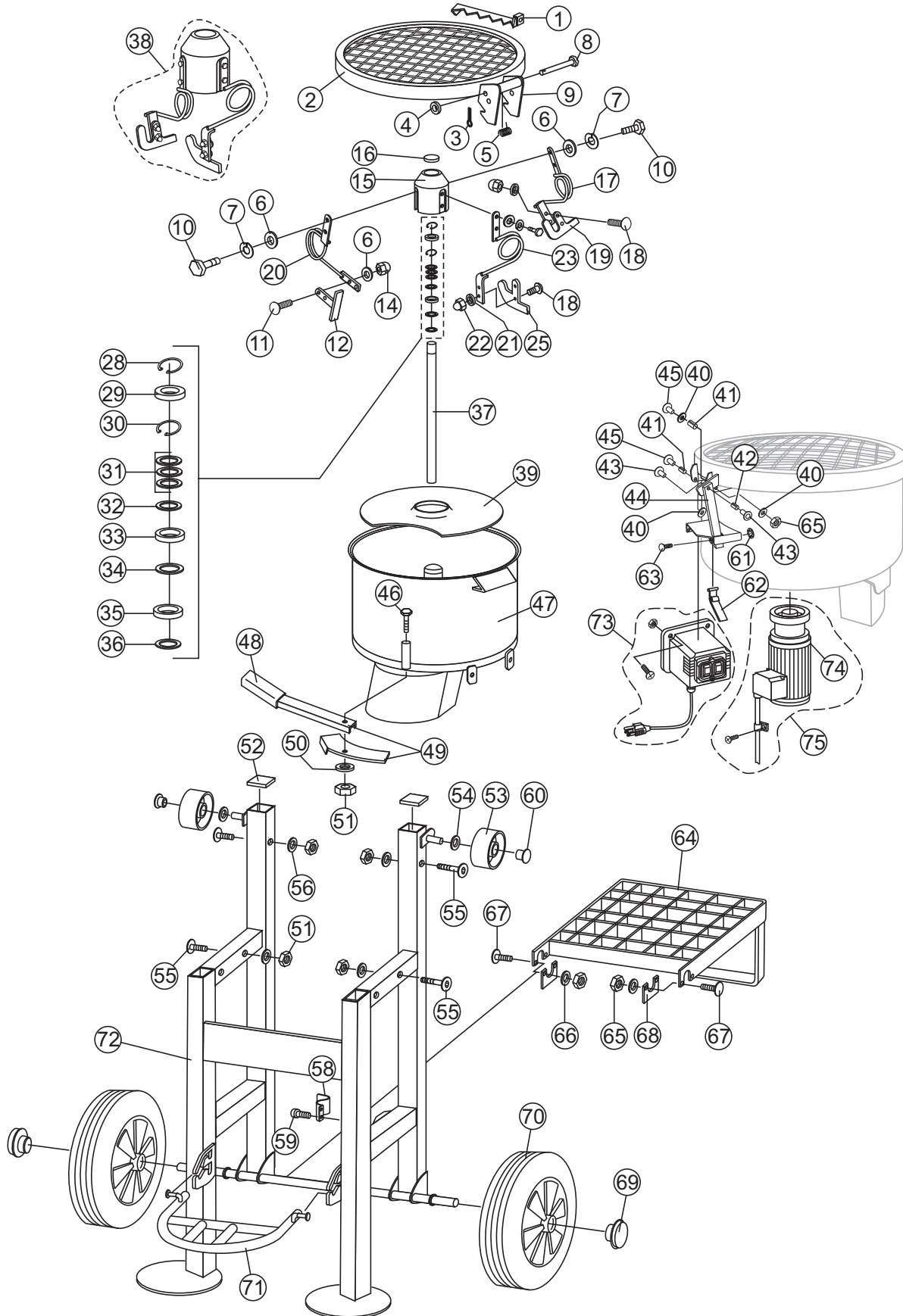
MIXER ASSY



MIXER ASSY

<u>NO.</u>	<u>PART NO.</u>	<u>PART NAME</u>	<u>QTY.</u>	<u>REMARKS</u>
1	CM37151	BAG RIPPER	1	
2	CM37218	COVER, TMS2000	1	
3	CM37138	SPLIT PIN 2X16	1	
4	CM50027	WASHER, 8.4 X 16 X 1.6	1	
5	CM37143	TORSION SPRING	1	
6#	CM50426	WASHER, 10.5	4	
7#	CM50001	WASHER, SPLIT B10	3	
8	CM37181	PIN, 8 X 140	1	
9	CM37144	HANDLE	1	
10#	CM50913	SCREW, M10 X 25	3	
11#	CM37184	SCREW, M10 X 30	2	
12#	CM37165	LATERAL MIXING PADDLE	1	
14#	CM37173	NUT, M10	6	
15#	CM37159	AGITATOR HEAD	1	
16#	CM37166	GLIDER, SFL 45X1-3	1	
17#	CM37161	OUTER MIXING ARM	1	
18#	CM37183	SCREW, M8 X 25	4	
19#	CM37164	OUTER MIXING PADDLE	1	
20	CM37162	LATERAL MIXING ARM	1	
21#	CM51005	WASHER, 8.4 X 24 X 2	4	
22#	CM37172	NUT, M8	4	
23#	CM37160	INNER MIXING ARM	1	
25#	CM37163	INNER MIXING PADDLE	1	
28	CM37180	SNAP RING, 35 X 1.5	1	
29	CM37145	CROWN	1	
30	CM50411	LOCK RING, 62 X 2	1	
31	CM37140	WASHER, ADJUSTING	4	
32	CM37147	O-RING SEAL	1	
33	CM37133	BALL BEARING	1	
34	CM37219	O-RING, SEAL 27 X 4	1	
35	CM37134	BALL BEARING, SEAL	1	
36	CM37140	WASHER, ADJUSTING	1	
37	CM37153	DRIVE SHAFT	1	
38	TMS	MIXING TOOL ASSY	1	INCLUDES ITEMS W/ #
39	CM37142	INSERT	1	
40	CM50032	WASHER, 5.3	3	

MIXER ASSY



MIXER ASSY

<u>NO.</u>	<u>PART NO.</u>	<u>PART NAME</u>	<u>QTY.</u>	<u>REMARKS</u>
41	CM37231	SLEEVE	2	
42	CM37225	SPACER, 10X6.4X24	1	
43	CM37223	RIVET, 1.8 X 12	2	
44	CM37220	LEVER, RELEASE	1	
45	CM37224	RIVET, 4.8 X 18.1	1	
46	CM37170	SCREW, M12 X 120	1	
47	CM37217	MIXING DRUM	1	
48	CM37132	HANDLE	1	
49	CM37156	SLIDEGATE VALVE	1	
50	CM37179	WASHER, 8.4X25X2	2	
51	CM50853	NUT, M12	7	
52	CM37148	GLIDER, 50 X 50 X1-2	2	
53	CM37149	CASTER WHEEL	2	
54	CM37174	WASHER, 15.5	2	
55	CM37185	SCREW M12X70	6	
56	CM50007	WASHER, 13	6	
58	CM37152	SPRING	1	
59	CM37187	SCREW M5X20	2	
60	CM37150	STAR LOCK, 15	1	
61	CM37215	STAR LOCK	1	
62	CM37216	SWITCH, ON/OFF	1	
63	CM37214	RIVET, BUTTONHEAD 5 X 50	1	
64	CM37167	STEP	1	
65	CM37171	NUT, LOCKING M6	4	
66	CM37175	WASHER, 6.4 X 12	4	
67	CM37186	SCREW, M6X20	4	
68	CM37168	SUPPORT PLATE	2	
69	CM37136	STAR LOCK	2	
70	CM37135	WHEEL	2	
71	CM37141	FOLDING STEP	1	
72	CM37157	FRAME	1	
73	CM37213	SWITCH, MOTOR,110V	1	
74	CM37226	MOTOR 110V	1	

TERMS AND CONDITIONS OF SALE — PARTS

PAYMENT TERMS

Terms of payment for parts are net 30 days.

FREIGHT POLICY

All parts orders will be shipped collect or prepaid with the charges added to the invoice. All shipments are F.O.B. point of origin. Multiquip's responsibility ceases when a signed manifest has been obtained from the carrier, and any claim for shortage or damage must be settled between the consignee and the carrier.

MINIMUM ORDER

The minimum charge for orders from Multiquip is \$15.00 net. Customers will be asked for instructions regarding handling of orders not meeting this requirement.

RETURNED GOODS POLICY

Return shipments will be accepted and credit will be allowed, subject to the following provisions:

1. A Returned Material Authorization must be approved by Multiquip prior to shipment.
2. To obtain a Return Material Authorization, a list must be provided to Multiquip Parts Sales that defines item numbers, quantities, and descriptions of the items to be returned.
 - a. The parts numbers and descriptions must match the current parts price list.
 - b. The list must be typed or computer generated.
 - c. The list must state the reason(s) for the return.
 - d. The list must reference the sales order(s) or invoice(s) under which the items were originally purchased.
 - e. The list must include the name and phone number of the person requesting the RMA.
3. A copy of the Return Material Authorization must accompany the return shipment.
4. Freight is at the sender's expense. All parts must be returned freight prepaid to Multiquip's designated receiving point.

5. Parts must be in new and resalable condition, in the original Multiquip package (if any), and with Multiquip part numbers clearly marked.
6. The following items are not returnable:
 - a. Obsolete parts. (If an item is in the price book and shows as being replaced by another item, it is obsolete.)
 - b. Any parts with a limited shelf life (such as gaskets, seals, "O" rings, and other rubber parts) that were purchased more than six months prior to the return date.
 - c. Any line item with an extended dealer net price of less than \$5.00.
 - d. Special order items.
 - e. Electrical components.
 - f. Paint, chemicals, and lubricants.
 - g. Decals and paper products.
 - h. Items purchased in kits.
7. The sender will be notified of any material received that is not acceptable.
8. Such material will be held for five working days from notification, pending instructions. If a reply is not received within five days, the material will be returned to the sender at his expense.
9. Credit on returned parts will be issued at dealer net price at time of the original purchase, less a 15% restocking charge.
10. In cases where an item is accepted, for which the original purchase document can not be determined, the price will be based on the list price that was effective twelve months prior to the RMA date.
11. Credit issued will be applied to future purchases only.

PRICING AND REBATES

Prices are subject to change without prior notice. Price changes are effective on a specific date and all orders received on or after that date will be billed at the revised price. Rebates for price declines and added charges for price increases will not be made for stock on hand at the time of any price change.

Multiquip reserves the right to quote and sell direct to Government agencies, and to Original Equipment Manufacturer accounts who use our products as integral parts of their own products.

SPECIAL EXPEDITING SERVICE

A \$35.00 surcharge will be added to the invoice for special handling including bus shipments, insured parcel post or in cases where Multiquip must personally deliver the parts to the carrier.

LIMITATIONS OF SELLER'S LIABILITY

Multiquip shall not be liable hereunder for damages in excess of the purchase price of the item with respect to which damages are claimed, and in no event shall Multiquip be liable for loss of profit or good will or for any other special, consequential or incidental damages.

LIMITATION OF WARRANTIES

No warranties, express or implied, are made in connection with the sale of parts or trade accessories nor as to any engine not manufactured by Multiquip. Such warranties made in connection with the sale of new, complete units are made exclusively by a statement of warranty packaged with such units, and Multiquip neither assumes nor authorizes any person to assume for it any other obligation or liability whatever in connection with the sale of its products. Apart from such written statement of warranty, there are no warranties, express, implied or statutory, which extend beyond the description of the products on the face hereof.

Effective: February 22, 2006

OPERATION AND PARTS MANUAL

HERE'S HOW TO GET HELP

PLEASE HAVE THE MODEL AND SERIAL
NUMBER ON-HAND WHEN CALLING

UNITED STATES

Multiquip Corporate Office

18910 Wilmington Ave. Tel. (800) 421-1244
Carson, CA 90746 Fax (800) 537-3927
Contact: mq@multiquip.com

Mayco Parts

800-306-2926 Fax: 800-672-7877
310-537-3700 Fax: 310-637-3284

Service Department

800-421-1244 Fax: 310-537-4259
310-537-3700

MQ Parts Department

800-427-1244 Fax: 800-672-7877
310-537-3700 Fax: 310-637-3284

Warranty Department

800-421-1244, Ext. 279 Fax: 310-537-1173
310-537-3700, Ext. 279

Technical Assistance

800-478-1244 Fax: 310-631-5032

MEXICO

MQ Cipsa

Carr. Fed. Mexico-Puebla KM 126.5 Tel: (52) 222-225-9900
Momoxpan, Cholula, Puebla 72760 Mexico Fax: (52) 222-285-0420
Contact: pmastretta@cipsa.com.mx

CANADA

Multiquip

4110 Industriel Boul. Tel: (450) 625-2244
Laval, Quebec, Canada H7L 6V3 Tel: (877) 963-4411
Contact: jmartin@multiquip.com Fax: (450) 625-8664

UNITED KINGDOM

Multiquip (UK) Limited Head Office

Unit 2, Northpoint Industrial Estate, Tel: 0161 339 2223
Global Lane, Fax: 0161 339 3226
Dukinfield, Cheshire SK16 4UJ
Contact: sales@multiquip.co.uk

© COPYRIGHT 2010, MULTIQUIP INC.

Multiquip Inc and the MQ logo are registered trademarks of Multiquip Inc. and may not be used, reproduced, or altered without written permission. All other trademarks are the property of their respective owners and used with permission.

This manual MUST accompany the equipment at all times. This manual is considered a permanent part of the equipment and should remain with the unit if resold.

The information and specifications included in this publication were in effect at the time of approval for printing. Illustrations, descriptions, references and technical data contained in this manual are for guidance only and may not be considered as binding. Multiquip Inc. reserves the right to discontinue or change specifications, design or the information published in this publication at any time without notice and without incurring any obligations.

Your Local Dealer is:

