

# **MQ MULTIQUIP** **Light Towers**



**Dependable jobsite lighting**





# Night Hawk Light Towers

*The Multiquip LT-12 Night Hawk light tower is engineered to provide dependable lighting for a wide range of applications.*

Whether you require lighting for a construction site, industrial location or special event the Night Hawk is the perfect choice for illuminating any outdoor location.

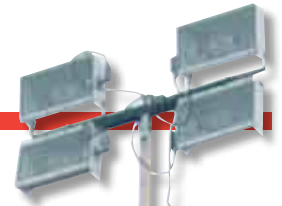
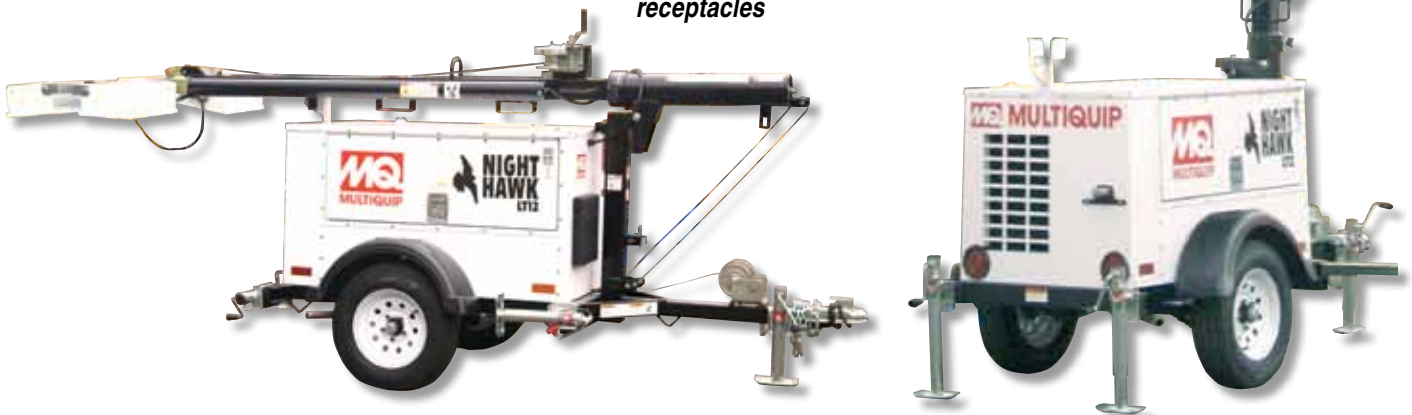
- **Fully adjustable Metal Halide Lamps** – Four 1,000 watt lamps provide maximum illumination and are controlled by individual circuit breakers for versatility.
- **Engine Power**– The Night Hawk light tower is powered by a Lombardini 1800-RPM, liquid-cooled, diesel engine. Automatic shutdowns for low oil pressure and high engine temperature are standard.
- **Panel light** — open the engine access door and a panel light automatically illuminates the control panel and all functions. Great for night deployment.
- **Convenience Receptacles** are externally mounted for accessibility without opening the side panels. They are ideal for supplying power for hand tools and small equipment while reducing the running noise of the light tower.
- **30 Gallon Fuel Tank** provides up to 64 hours of run time while running at  $\frac{3}{4}$  load.
- **Outstanding wind stability** of up to 65 MPH with outriggers and jackstands fully deployed.
- **Trailer Design** – withstands the rigors of the jobsite in addition to providing smooth highway towing.
- **Warranty** – Warranty periods are one year for the machine and two years (or 2,000 hours) for the Lombardini diesel engine.



*Engine control panel hour meter, breakers, light switches and key start*



*Externally mounted convenience receptacles*





# Modular Light Towers

MultiQuip MLT-Series modular light towers combine a rugged frame with your choice of either a high quality MultiQuip DA7000SSW generator or SDW225SS generator/welder. Each power unit delivers the features you've come to expect from MultiQuip such as brushless design and excellent voltage regulation. Simple mounting requirements provide the ability to exchange power sources with minimal delay. This unique design provides greater versatility than any other light tower on the market.

Ballasts and light switches for the MLT Series are conveniently located in the tongue area of the trailer. This provides the ability to illuminate an area even without running the generator. Simply connect the power cord to an alternate power source and you can operate the light fixtures. This is a great feature for special events requiring either low noise levels or zero emissions.

*Our MLT-Series modular light towers are so reliable and durable that we offer a 3-year/3,000 engine hour warranty on the entire unit.*



Lights can be rotated 360°

Outstanding wind stability with outriggers and jack stands deployed — 72 mph with genset; 45 mph trailer only.

**Light tower may be purchased less power source as model MLT.**

## Modular design lets you choose the power source...

### MLTDA7 — 7KW 3600 RPM Generator



65 dBA

Combine the MLT with a DA7000SSW (MLTDA7) for a compact light tower that offers the best sound attenuation in the industry.

- AC output: 7kW maximum; 6kW continuous
- Brushless alternator design greatly minimizes service time.
- Liquid-cooled 12.5 HP Kubota diesel engine\*
- Quiet operation – 65.7dBA @ 23 feet.

### MLTSDW7 — 7KW AC Generator/ 225 Amp Welder Combo

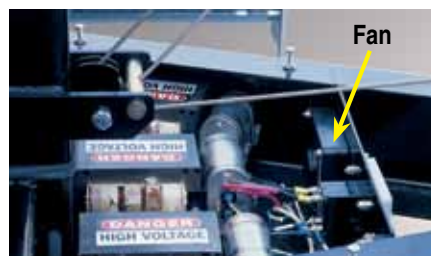


Combine the MLT with an SDW225SS (MLTSDW7) for the industry's only light tower offering the versatility of a premium generator and CC/CV welding capability.

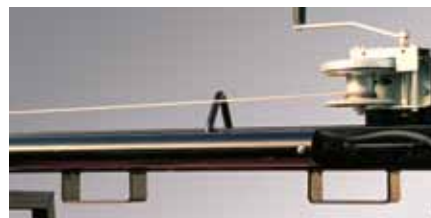
- AC output: 7kW maximum; 6kW continuous
- Outstanding arc characteristics for welding pipe or structural steel.
- Liquid-cooled 12.5 HP Kubota diesel engine\*
- Quiet operation – 68.7dBA @ 23 feet.

### These power sources feature...

- Exterior service drains
- Full range of convenience receptacles
- Lockable Control Panels
- 48 hours+ runtime
- Quiet operation — 70 dB or less



Fan-cooled Ballast Box resides in the tongue of the trailer in a watertight compartment. Control breaker switches for the lights are easily accessible.



Heavy-duty brake winches telescope the mast up to 30 feet high and safely hold the mast in position, should the operator release the handle.



# Light Towers Specifications

	MODULAR LIGHT TOWERS		NIGHT HAWK LIGHT TOWER
	MLTDA7 GENERATOR	MLTSDW7 GENERATOR/WELDER	LT12D
Weight, lbs.	1644	1744	1550
Length, in.	173	173	170
Height, in.	70	70	74
Width, in.	50	50	51
Max. Tower Height, ft.	32	32	32
Support Points	4	4	5
Wind Stability with genset, mph	72	72	65
Ground Clearance, in.	6.5	6.5	8.0
Tire Size	13"	13"	13"
Winch capacity, lb.	1,500	1,500	1,500
Winch rope wire	3/16"	3/16"	3/16"
Fuel Tank Capacity, gal.	30	30	30
Run time, 3/4 load, hrs.	48	48	64
Engine Make	Kubota Z482 Diesel	Kubota Z482 Diesel	Lombardini LDW1003 Diesel
Engine HP*	12.5	12.5	12
No. of cylinders	2	2	3
Engine RPM	3,600	3,600	1,800
Maximum Generator Output, watts	7,000	6,600	6,600
Cont. Generator Output, watts	6,000	6,000	6,000
Voltage	120/240	120/240	120/240
Amp at 120/240V	50/25	50/25	50/25
Receptacles	4	3	2
DC Welder — Max. Output, amp	N/A	225	N/A
DC Welder — Voltage Range	N/A	15 to 28	N/A
DC Welder — Duty Cycle @ 200 amp	N/A	100%	N/A
DC Welder — Current Range, amp	N/A	50 to 225	N/A
Floodlights	4 — 1000 watt Metal Halide	4 — 1000 watt Metal Halide	4 — 1000 watt Metal Halide
Lumens	440,000	440,000	440,000
Light Coverage, acres	5 to 7	5 to 7	5 to 7
Light Termination	4 x 3-pin QD Plug	4 x 3-pin QD Plug	4 x 3-pin QD Plug
Sound Level @23 ft, dB	65.7	68.7	73
Standard Hitch Type	29228 — 2" Ball Adjustable	29228 — 2" Ball Adjustable	29546 — 2" Ball — Bolt-On
Optional Hitches	29369 — 3" Pintle	29369 — 3" Pintle	29791 — Bolt-On Pintle Eye 29720 — Adjustable Height 2" Ball Kit 29721 — Adjustable Height Pintle Eye Kit

© COPYRIGHT 2011, MULTIQUP INC.

Light towers ship with standard 2" ball hitch mounted to the tongue. Optional height-adjustable pintle or ball hitch mounting kits are available.



\* Engine power ratings are calculated by the individual engine manufacturer and the rating method may vary among engine manufacturers. Multiquip Inc. and its subsidiary companies makes no claim, representation or warranty as to the power rating of the engine on this equipment and disclaims any responsibility or liability of any kind whatsoever with respect to the accuracy of the engine power rating. Users are advised to consult the engine manufacturer's owners manual and its website for specific information regarding the engine power rating.



**MULTIQUP INC.**  
POST OFFICE BOX 6254  
CARSON, CA 90749  
310-537-3700 • 800-421-1244  
FAX: 310-537-3927  
E-MAIL: [mq@multiquip.com](mailto:mq@multiquip.com)  
[www.multiquip.com](http://www.multiquip.com)