

MQ MULTIQUIP



180 Amp Battery-Powered Welder



**Quiet with no exhaust fumes —
perfect for indoor use**

Construction Starts Here

www.multiquip.com



BDW180MC Battery-Powered Welder

The new BDW180MC Battery-Powered Welder delivers premium performance with true DC power.

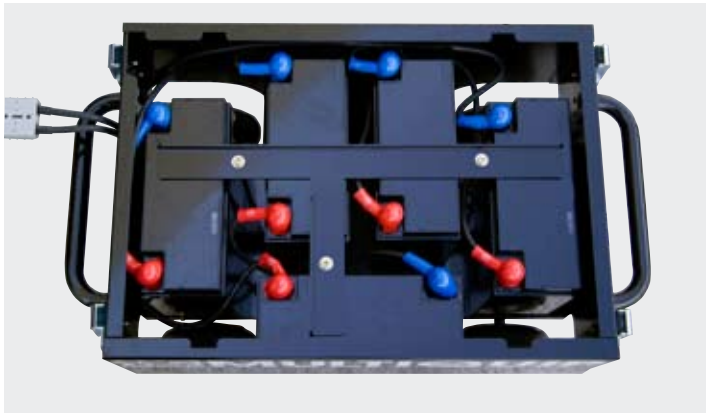
- One-of-a-kind rechargeable battery welder.
- Quiet with no exhaust fumes; great for indoor use.
- Light weight and compact — just 129 pounds.
- Up to 180 Amp of welding power (True DC power).
- Digital Control Panel.
- Weld and recharge at the same time
- Two-year warranty.



© COPYRIGHT 2008, MULTIQIP INC.



Digital Control Panel



Battery compartment houses five rechargeable 12 Volt batteries.

Your Multiquip dealer is:

Specifications

Model	BDW180MC
WELDER FEATURES	
DC Voltage	26.8
DC Current	170cc
Duty Cycle	40% @ 120A
Current Range, amps	30-180
DC Current-Constant current	Standard
Welding Process-SMAW	Standard
Welding Process-GTAW	Standard
Power Source	(5)12V-12Ah Batteries
AC INPUT	
Rated Voltage (V)	120V
Rated Current (A)	12.5 amps
Phase	Single-phase
Frequency	60
DIMENSIONS AND WEIGHT	
Dimensions L x W x H	20.5 x 11.8 x 17.5
Weight	129 lbs.
Wheel Kit	Standard

All features and specifications are subject to change without notice. MQBATWELD (01-08)



MULTIQIP INC.
 POST OFFICE BOX 6254
 CARSON, CA 90749
 310-537-3700 • 800-421-1244
 FAX: 310-537-3927
 E-MAIL: mq@multiquip.com
 www.multiquip.com