

MQ MULTIQUIP

Welders



Dependable welding performance

Construction Starts Here

www.multiquip.com



135 to 180 Amp Welders

Complete range of engine driven welders.

Multiquip welders deliver premium performance in sizes ranging from 135 amps to 500 amps. Whether you are looking for a gasoline-powered machine for small repairs or a large diesel-powered machine for service truck or industrial applications Multiquip has the best welders in the industry.



135 amp welder
1.5kW AC output
Honda gas engine
GAW135H

GAW135H

- **Permanent magnet alternator design** significantly reduces overall weight compared to other welders in its class.
- **Compact design** fits easily in the box of a service truck or the basket of high reach equipment. At only 114 pounds it's easy to move around the job site.
- **135 Amp DC Welder and 1.5kW 120VAC output** is ideal for hard to reach areas such as rooftops or air conditioner repair. *Note: Simultaneous operation not available on this unit.*
- **Powered by a Honda GX200 engine** with recoil start and standard idle control and low-oil shutdown.

Welding Applications	GAW
SMAW — Shielded Metal Arc Welding	✓
FCAW — Flux Core Arc Welding	✓
GMAW — Gas Metal Arc Welding	—
GTAW — Gas Tungsten Arc Welding	—
ACAC — Air Carbon Arc Cutting	—

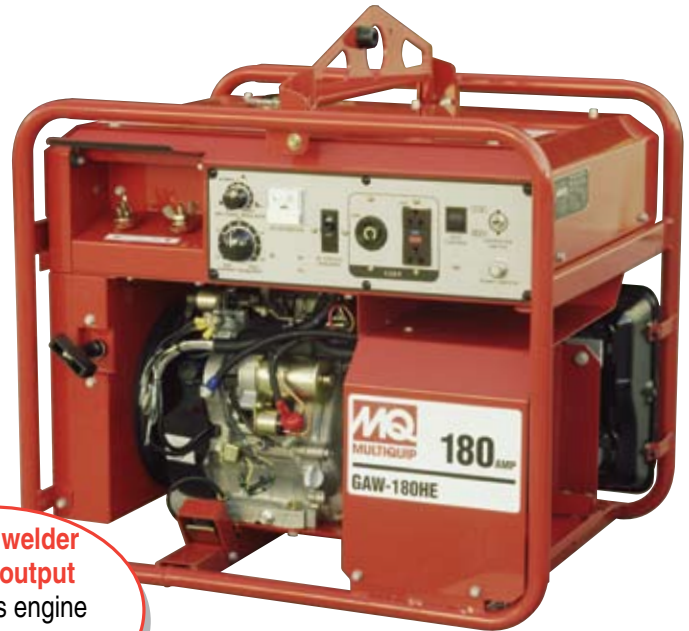


135 to 180 Amp Welders

GAW180HE

- **Ultra-clean AC power** — voltage regulation $\pm 3\%$
- **Permanent magnet alternator design** reduces overall weight up to 30% compared to other welders in its class.
- **Arc force control** allows the operator to fine tune DC current during low voltage welding conditions and helps prevent electrodes from sticking during short arc length welding.
- **180 Amp DC Welder and 3.0kW 120V AC output** — operator can simultaneously use both features.
- **Powered by a Honda GX340 engine** with push-button electric start and recoil start. Idle control and low-oil shutdown are standard.

Welding Applications	GAW
SMAW — Shielded Metal Arc Welding	✓
FCAW — Flux Core Arc Welding	✓
GMAW — Gas Metal Arc Welding	—
GTAW — Gas Tungsten Arc Welding	✓
ACAC — Air Carbon Arc Cutting	—



180 amp welder
3kW AC output
Honda gas engine
Electric start
GAW180HE

NEW! BATTERY-POWERED WELDER

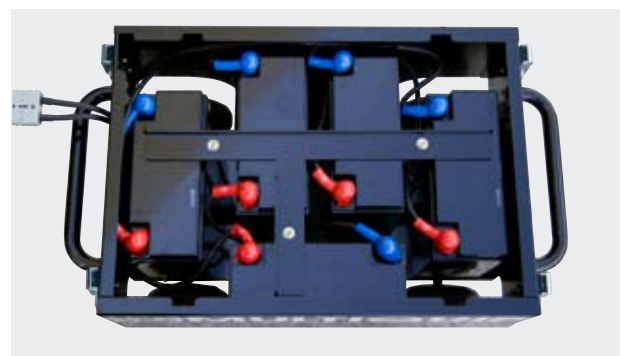


180 amp welder
Battery powered
BDW180MC

Welding Applications	BDW
SMAW — Shielded Metal Arc Welding	✓
FCAW — Flux Core Arc Welding	—
GMAW — Gas Metal Arc Welding	—
GTAW — Gas Tungsten Arc Welding	✓
ACAC — Air Carbon Arc Cutting	—

BDW180MC

- **One-of-a-kind rechargeable battery welder.**
- **Quiet with no exhaust fumes;** great for indoor use.
- **Light weight and compact** — just 129 pounds.
- **Up to 180 Amps of welding power** (True DC power).
- **Digital Control Panel.**



Battery compartment houses five rechargeable 12 Volt batteries.



225 Amp Welder

SDW225SSA

As a welder it delivers up to 225 amps of DC welding power in either CC (constant current) or CV (constant voltage) mode. Additionally, it provides up to 6kW of 120/240 volt AC power.

- **Outstanding arc characteristics** make it ideal for welding pipe and structural steel.
- **Ultra-clean AC power** — voltage regulation $\pm 2\%$.
- **Low noise level** — produces only 68.7 dBA.
- **Dependable Tier 4 Kubota diesel engine**, with electric start, is backed by a three-year engine manufacturer's warranty. A standard self-priming fuel system allows quick starting even if the engine is run dry. Automatic idle control is standard for improved fuel economy.

- **Safety shut-downs** are provided for water, oil level and DC thermal overload.
- **Optional trailer** is available for highway towing and push cart for shop use.
- **Also available in light tower configuration** as model MLT-SDW7.



Full instrumentation including controls for both CC and CV welding.

Also available in light tower configuration as model MLT-SDW7



225 amp welder
 6kW AC output
 Kubota diesel engine
 Optional remote control
SDW225SSA

Welding Applications	SDW
SMAW — Shielded Metal Arc Welding	✓
FCAW — Flux Core Arc Welding	✓
GMAW — Gas Metal Arc Welding	✓
GTAW — Gas Tungsten Arc Welding	✓
ACAC — Air Carbon Arc Cutting	✓



300 Amp Welder

DLW300ESA

This CC (constant current) and CV (constant voltage) welder delivers up to 300 amps of DC welding power. Additionally, it provides up to 10.5 kW of 120/240 volt AC power. Low noise level — produces only 59 dBA.

- **Outstanding arc characteristics** plus the ability to connect machines together for parallel operation.
- **Ultra-clean AC power** — voltage regulation $\pm 1.5\%$.
- **Quietest welder on the market** — 59 dBA.
- **Weld and use AC power at the same time.**
- **E-Mode** improves fuel efficiency by allowing the operator to weld with engine at idle speed at up to 160 amps. Reduces operating costs and noise levels.
- **Arc force control** allows the operator to fine tune DC current during low voltage welding conditions and helps prevent electrodes from sticking during short arc length welding.
- **Dependable Tier 4 Kubota diesel engine** is backed by a three-year engine manufacturer's warranty. A standard self-priming fuel system allows quick starting even if the engine is run dry. Automatic idle control is standard for improved fuel economy.
- **Safety shut-downs** are provided for water, oil level and DC thermal overload.
- **Optional trailer** is available for highway towing.



Full instrumentation is protected by a vandal proof cover. LED display provides clear readout of load characteristics.

Remote Control

Optional remote control allows the operator to adjust amperage up to 100 feet away from the machine.



300 amp welder
10.5kW AC output
Kubota diesel engine
DLW300ESA

Welding Applications	DLW
SMAW — Shielded Metal Arc Welding	✓
FCAW — Flux Core Arc Welding	✓
GMAW — Gas Metal Arc Welding	✓
GTAW — Gas Tungsten Arc Welding	✓
ACAC — Air Carbon Arc Cutting	✓



400 Amp Welder

DLW400ESA

This CC (Constant Current) and CV (Constant Voltage) welder delivers up to 400 amps of operation for one man, or simultaneous two man operation with 200 amps of output per operator. Additionally, it provides up to 14 kW of 120/240 volt AC power. Low noise level — produces only 67.5 dBA.

- **Outstanding arc characteristics** plus the ability to connect machines together for parallel operation.
- **One or Two-man operation.** Independent controls and up to 200 amps for each operator or 400 amps for one operator.
- **Dependable Tier 4 Kubota diesel engine** is backed by a three-year engine manufacturer's warranty. A standard self-priming fuel system allows quick starting even if the engine is run dry. Automatic idle control is standard for improved fuel economy.
- **E-Mode** improves fuel efficiency by allowing the operator to weld with the engine at idle speed at up to 240 amps. Greatly reduces operating costs and noise levels.
- **Arc Force Control** allows the operator to fine tune DC current during low voltage welding conditions and helps prevent electrodes from sticking during short arc length welding.
- **Safety shut-downs** are provided for water, oil level and DC thermal overload.
- **Optional trailer** is available for highway towing.



LED display provides clear readout of load characteristics for two operators..

Remote Control

Optional remote control allows the operator to adjust amperage up to 100 feet away from the machine. DLW400ESA allows two operators to weld simultaneously, each with his own optional remote control.



The DLW400ESA allows two welders to work simultaneously — each with his own remote control.

Welding Applications	DLW
SMAW — Shielded Metal Arc Welding	✓
FCAW — Flux Core Arc Welding	✓
GMAW — Gas Metal Arc Welding	✓
GTAW — Gas Tungsten Arc Welding	✓
ACAC — Air Carbon Arc Cutting	✓

400 amp welder
14kW AC output
Kubota diesel engine
Single and dual operation
Optional remote controls
DLW400ESA



500 Amp Welder

DAW500SA

This CC (constant current) CV (constant voltage) welder delivers up to 500 amp of DC welding output. Additionally, it provides up to 3kW of 120/240 volt AC power. This unit can be simultaneously used as a welder and to supply AC power for other equipment

- **Outstanding arc characteristics** plus the ability to connect machines together for parallel operation.
- **Brushless permanent generator design** for lower maintenance.
- **Low noise level** — produces only 72 dBA.
- **Dependable Tier 4 Kubota diesel engine** is backed by a three-year engine manufacturer's warranty. A standard self-priming fuel system allows quick starting even if the engine is run dry. Automatic idle control is standard for improved fuel economy.

- **Safety shut-downs** are provided for water, oil level and DC thermal overload.
- **Optional trailer is available** for highway towing.



Full instrumentation includes DC voltmeter and ammeter.



500 amp welder
 3kW AC output
 Kubota diesel engine
 Optional remote control
DAW500SA

Welding Applications	DAW
SMAW — Shielded Metal Arc Welding	✓
FCAW — Flux Core Arc Welding	✓
GMAW — Gas Metal Arc Welding	✓
GTAW — Gas Tungsten Arc Welding	✓
ACAC — Air Carbon Arc Cutting	✓

Portable Welder Specifications

© COPYRIGHT 2008, MULTIQUP INC.

MODEL	GAW135H	BDW180MC	GAW180HE	SDW225SSA	DLW300ESA	DLW400ESA	DAW500SA
WELDER FEATURES							
DC Voltage	25.2	26.8	26.8	15-28CV, 28CC	31CC	34, 2x27CC	16-40CV, 38CC
DC Current	135CC	170CC	180CC	225CC/CV	300CC/CV	400CC/CV 2x200CC/CV	500CC/CV
100% Duty Cycle @ 100%, amps	40% @ 135A	40% @ 120A	50% @ 180A	200	280	350/2x175	350
Current Range, amps	40-135	30-180	50-180	50-225	35-300	70-400, 2x35-200	40-500
DC Current — Constant Voltage	N/A	N/A	N/A	Standard	Standard	Standard	Standard
DC Current — Constant Current	Standard	Standard	Standard	Standard	Standard	Standard	Standard
Welding Process — SMAW	Standard	Standard	Standard	Standard	Standard	Standard	Standard
Welding Process — FCAW	Standard	N/A	Standard	Standard	Standard	Standard	Standard
Welding Process — GMAW	N/A	N/A	N/A	Standard	Standard	Standard	Standard
Welding Process — GTAW	N/A	Standard	Standard	Standard	Standard	Standard	Standard
Welding Process — ACAC	N/A	N/A	N/A	Standard	Standard	Standard	Standard
AC OUTPUT							
Maximum Output — AC kW Single Phase	1.5	N/A	3.0	6	10.5	14	3
Cycle	60	N/A	60	50/60	50/60	50/60	50/60
Voltage	120	N/A	120	120/240	120/240	120/240	120
Amperage	15	N/A	25	50/25	87/44	116/58	25
Voltage Regulation	3%	N/A	3%	2%	1.5%	1.5%	7%
Receptacles (see chart below)	A	N/A	A, C	A, C, F	E, C, H, A	A, C, E, H	A, C
ENGINE FEATURES							
Engine Model	Honda GX200	(5) 12V-12Ah Batteries	Honda GX340	Kubota Z482	Kubota D722	Kubota V1305	Kubota D1803
No. Cylinders; HP^{‡‡}; RPM	1; 6.5; 3600	N/A	1; 9.5; 3600	2; 12; 3600	3; 19; 3600	4; 31.5; 3600	3; 34.5; 2800
Fuel Type	Gasoline	N/A	Gasoline	Diesel	Diesel	Diesel	Diesel
Fuel Tank Capacity — gal.	1.6	N/A	3.7	6.6	9.5	11.1	12.0
Fuel Consumption at rated load — gph	0.46	N/A	0.93	0.6	1.1	1.5	1.3
Electric Start, Idle Switch	Recoil w/Idle	N/A	Standard	Standard	Standard	Standard	Standard
GENERAL FEATURES							
Simultaneous Use — AC/DC	No	N/A	Standard	Standard	Standard	Standard	Standard
Noise Level — dBA @ 23 feet	76	N/A	76	68.7	59	70	72
Lifting Bale	N/A	N/A	Standard	Standard	Standard	Standard	Standard
External Drains — Water	N/A	N/A	N/A	Standard	Standard	Standard	Standard
External Drains — Oil, Fuel	N/A	N/A	N/A	Standard	Standard	Standard	Standard
Automatic Safety Shutdown — Oil Pressure	Oil Level	N/A	Oil Level	Standard	Standard	Standard	Standard
Automatic Safety Shutdown — Water Temperature	N/A (Air Cooled)	N/A	N/A (Air Cooled)	Standard	Standard	Standard	Standard
Automatic Safety Shutdown — Thermal Switch DC	N/A	N/A	N/A	Standard	Standard	Standard	Standard
Automatic Safety Shutdown — Low Battery Charge	N/A	N/A	N/A	Standard	N/A	N/A	Standard
DIMENSIONS AND WEIGHT							
Dimensions — L x W x H in.	21.8 x 17.8 x 19	20.5 x 11.8 x 17.5	27.5 x 22 x 23.8	45 x 26 x 31	51 x 27 x 33	61 x 29 x 35	53 x 32 x 36
Dry Weight lbs.	114	129	239	671	849	1,090	1,069
OPTIONS							
Trailers	N/A	N/A	N/A	LTRL-10W*; TRLR-MPXF**	TRLR-10W; TRLR-MPXF**	TRLR-MP; TRLR- MPXF**	TRLR-MP; TRLR- MPXF**
Wheel Kit	UWK	Standard	UWK	WKT225A	N/A	N/A	N/A
Remote Control	N/A	N/A	N/A	Optional	Optional	Optional	Optional

*Requires adapter kit. ** TRLR-MPXF has built-in 28 gallon fuel cell

RECEPTACLE IDENTIFICATION CHART

Match the letter codes in the specification table to the receptacles below.



A — NEMA 5-20R 125V duplex 20A w/GFCI



B — NEMA L5-20R 125V 20A twist lock



C — NEMA L5-30R 125V 30A twist lock



D — NEMA L6-20R 250V 20A twist lock



E — NEMA L6-30R 250V 30A twist lock



F — NEMA L14-30R 125/250V 30A twist lock



G — NEMA 7410 250V 20A twist lock



H — CS-6369 125/250VAC 50A twist lock

Welders Warranty: Models rated at 180 amps and below include a **two-year warranty** covering parts and labor.

Models rated at 225 amps and above include a **three-year (or 3,000 hours) warranty** covering parts and labor. Contact Multiquip for complete warranty information.

Welding Cable Information

2E50 — 50' #2 Cable with electrode holder
2E100 — 100' #2 Cable with electrode holder
2E150 — 150' #2 Cable with electrode holder
10E50 — 50' #1/0 Cable with electrode holder

10E100 — 100' #1/0 Cable with electrode holder
10E150 — 150' #1/0 Cable with electrode holder
2G50 — 50' #2 Cable with ground clamp
2G100 — 100' #2 Cable with ground clamp

2G150 — 150' #2 Cable with ground clamp
10G50 — 50' #1/0 Cable with ground clamp
10G100 — 100' #1/0 Cable with ground clamp
10G150 — 150' #1/0 Cable with ground clamp

‡ All horsepower ratings are supplied by engine manufacturers.

‡‡ The power rating of the Honda engine indicated in this document is the net power output tested on a production engine for the engine model and measured in accordance with SAE J1349 at 3600 rpm. Mass production engines may vary from this value. Actual power output for the engine installed in the final machine will vary depending on numerous factors, including the operating speed of the engine in application, environmental conditions, maintenance and other variables.

All features and specifications are subject to change without notice.
 MQWELD-397 Rev. H (08-08)
 Units manufactured by Denyo Mfg. Co.



MULTIQUP INC.
 POST OFFICE BOX 6254
 CARSON, CA 90749
 310-537-3700 • 800-421-1244
 FAX: 310-537-3927
 E-MAIL: mq@multiquip.com
 www.multiquip.com