

RX1575



Transforming articulation.



**MQ's articulating trench roller is now more reliable than ever. The Rammax RX1575 is designed to meet contractor expectations for performance and durability. Loaded with all the features you need, the RX1575 articulates confidence.**

- 1 Flexible drum options** include easy to remove drum rings that adjust from 33" to 24" working widths or 33" solid drums.
- 2 Compaction performance and increased stability** on uneven surfaces with a maintenance free oscillating articulation joint.
- 3 Gain traction on tough material** with steel padded drums and four scrapers.
- 4 Increased control in all terrain conditions** with a wireless remote transmitter covering a wider operational area & two ideally positioned receiver eyes.
- 5 Charge the remote control battery** with a solar panel or cable connector.
- 6 Total safety concept** reduces job site hazards. Visual contact is required between remote transmitter and receiver eyes. Roller automatically stops within 8 ft. (2.5m) of the operator.
- 7 Powerful Yanmar diesel engine** liquid cooled, 3 cylinder engine is EPA Tier 4 compliant. Delivers exceptional performance even in high altitude applications.
- 8 Able to withstand rugged work environments** and steer quickly and precisely with two steering cylinders.
- 9 Easy access to all maintenance points** with fold-up front and rear covers.





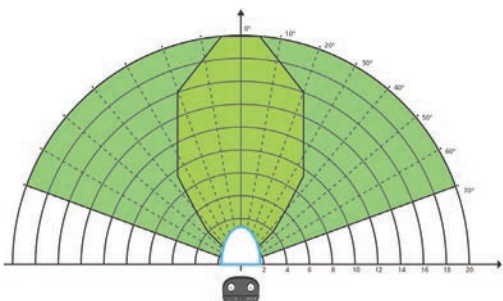
**Unique oscillating articulation joint** provides optimum traction and compaction on uneven surfaces. It also improves operational stability and reduces tip over risk.



**A highly fuel efficient Yanmar engine** idles automatically after 15 seconds of no load. Operating run-time can reach up to 11.5 hours with a 7.4 gallons diesel reservoir consuming only 0.74 gal/hr. Electronically adjusts fuel delivery to maintain optimum performance, even at high altitudes.

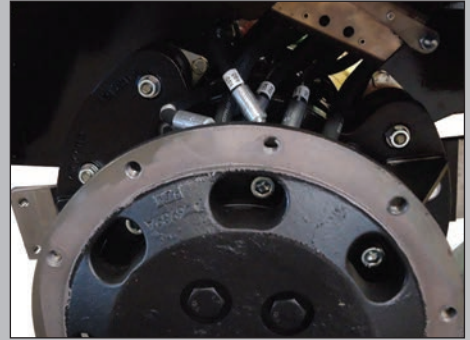


**Infrared (IR) control system** optimized for both operator safety and functionality. Requires visual contact with the machine for operation. Simplify fleet management by pairing transmitter to roller in seconds via cable connector. Blocks out signals from other machines on the job.



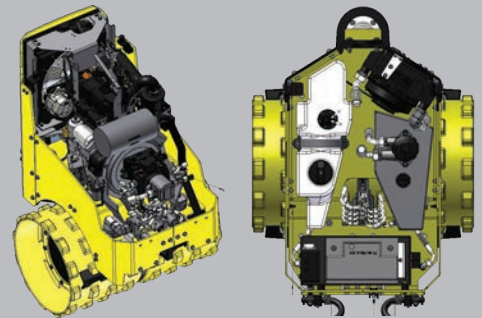
**Ideally positioned IR receivers** provide a wide operating range up to 66 feet at a 70 degree angle eliminating virtually any dead spot.

## Service Friendly



### Hydraulic Hose Network

Easily accessed through the drums with no special tools required. All hoses are routed to prevent wear and numbered for easy identification.



### Frame Layout

Convenient access to both compartments places battery, filters, oil fills, fluid drains and hydraulic hoses within reach reducing time spent on scheduled maintenance.



### Exciter Design

In maintenance free exciter shafts with oversized bearings and single cast construction to maximize service life.



# SPECIFICATIONS RX1575 SERIES

Performance Data	RX1575	RX157533
<b>Centrifugal Force-lbs</b> (kn)	16,860 (75) HIGH 8,430 (37.5) LOW	
<b>Vibration Frequency</b> - vpm (hz)	2,460 (41)	
<b>Amplitude</b> - in (mm)	0.043 (1.1) HIGH 0.024 (0.6) LOW	
<b>Travel Speeds</b> - ft/min (m/min)	148 (45) HIGH 82 (25) LOW	
<b>Max Grade w/w-out vibration</b>	25/30	
<b>Inside Turning Radius</b> - in (mm)	61 (1,541)	57 (1,436)
<b>Outside Turning Radius</b> - in (mm)	86 (2,191)	90 (2,286)
<b>Engine</b>		
<b>Engine Make/Model</b>	Yanmar 3TNV80	
<b>Engine Power-hp</b> (kw)	20.4 (15)	
<b>Operating Speed</b> - rpm	2,400	
<b>Diesel Fuel Tank Capacity</b> - gal (l)	7.4 (28)	
<b>Hydraulic Oil Tank-gal</b> (l)	4.2 (16)	
<b>Weights and Dimensions</b>		
<b>Overall Width</b> - in (mm)	24 (610)	33 (850)
<b>Overall Length</b> - in (mm)	78 (1,980)	
<b>Overall Height</b> - in (mm)	52 (1,317)	
<b>Operating Weight</b> - lbs (kg)	3,087 (1,400)	3,197 (1,450)
<b>Features</b>		
<b>Wireless Remote</b>	Infrared	
<b>Range of Infrared Operation</b> - ft (m)	65 (20) MAX 8 (2.5) MIN	
<b>Range of Cable Connected Operation</b> - ft (m)	13 (4) MAX 8 (2.5) MIN	
<b>Remote Control Charging</b>	Solar & Electric	
<b>Cable Connector</b>	Standard	
<b>Shutdown Safety Bar</b>	Optional	
<b>Removable Drum Rings</b>	Optional	NA



## CONFIDENCE

**5 Years** - Bearings, Drive Motor and Eccentric Housing Assemblies  
**3 Years** - Yanmar Engine  
**2 Years** - Basic Machine Parts & Labor

Your Multiquip dealer is:

