



# DIS185SSI4F Air Compressor

## A-Frame Installation Instructions

The following instructions are intended to assist the user in the installation of the trailer A-frame for use on the DIS185SSI4F air compressor. Please read all assembly instructions before installing the kit.

### REQUIRED TOOLS

- Forklift/Crane/Hoist
- Heavy Duty Jack Stands (2)
- 12mm, 13mm, 19mm open-ended wrenches
- 3/8" Ratchet w/ 12mm, 13mm, 19mm sockets
- Torque Wrench

### PARTS

Verify that all parts are accounted for. See Figure 1 and Table 1.

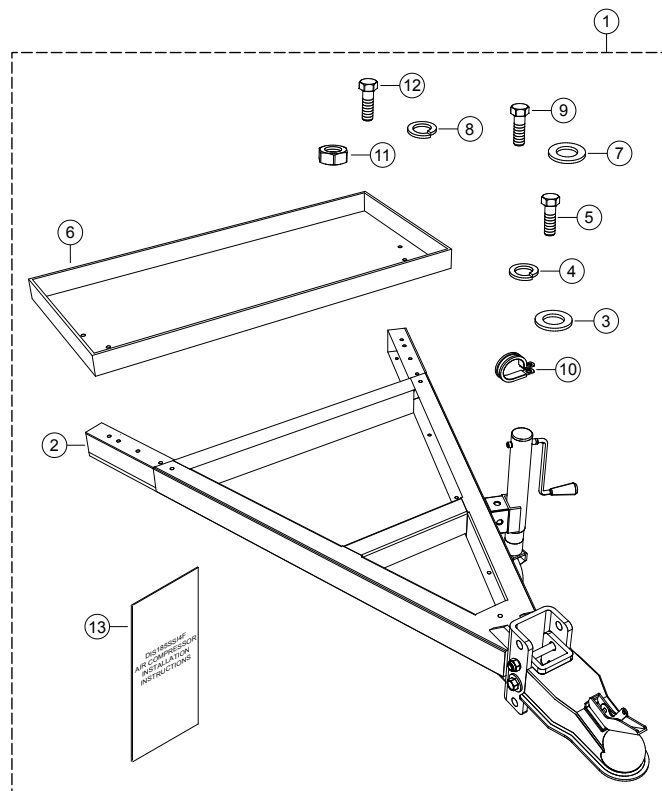


Figure 1. DIS185SSI4F A-Frame Installation Kit

Table 1. DIS185SSI4F A-Frame Installation Kit

Item No.	Part No.	Description	QTY.	Remarks
1	TBD	Kit, DIS185SSI4F A-Frame Installation	1	Includes items 2,13
2		Compressor A-Frame	1	Includes items 3-5
3		M12 Flat Washer	6	Obtain Locally
4		M12 Spring Washer	6	Obtain Locally
5		M12-1.75 x 30mm Screw	6	Obtain Locally
6		Compressor Tool Tray	1	Includes items 7-9
7		M8 Flat Washer	4	Obtain Locally
8		M8 Lock Washer	4	Obtain Locally
9		M8-1.25 x 15mm Screw	4	Obtain Locally
10		1/4-20 x 3/4" G-Clamp	6	Includes items 11-12
11		1/4-20 Nut	6	Obtain Locally
12		1/4"-20 Screw	6	Obtain Locally
13		Instructions, DIS185SSI4F A-Frame Installation	1	

### WORK SAFELY!

Only a **qualified service technician** with proper training should perform this installation. Follow all shop safety rules when performing this installation.

### PREPARATION

1. Make sure air compressor is turned off and engine is cool.
2. Place the air compressor in an area free of dirt and debris. Make sure it is on secure level ground with chock blocks underneath each wheel to prevent the air compressor from rolling.

## PREPARATION

1. Open the left side cabinet door of the air compressor to gain access to the engine and battery location.
2. Disconnect negative cable (**BLACK**) from the negative terminal on the battery. See Figure 2.

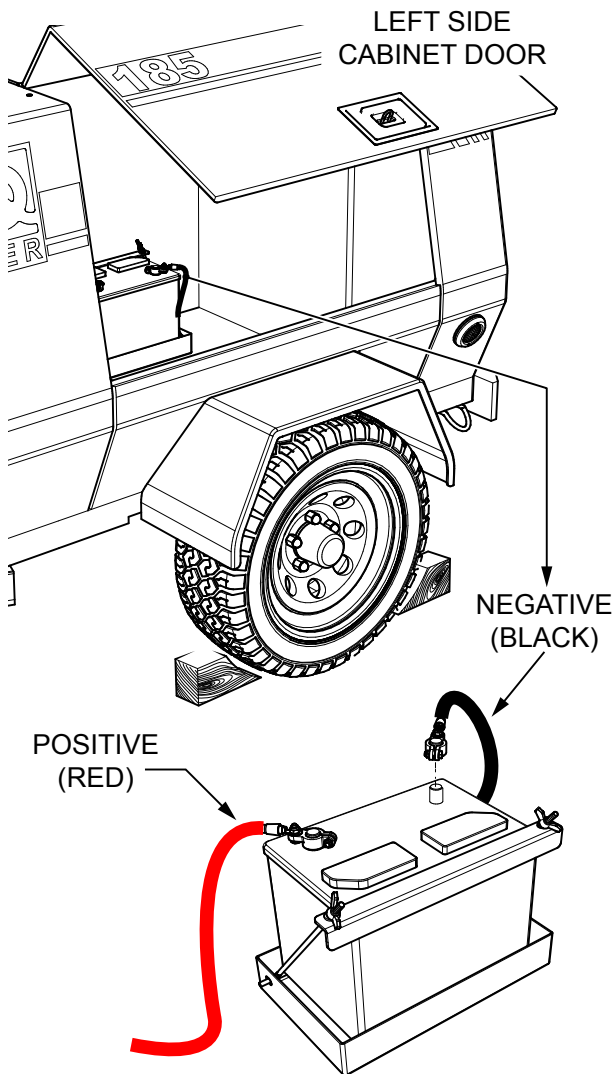


Figure 2. Battery Cable Disconnection

## LIFTING THE AIR COMPRESSOR

1. Attach one end of a lifting strap or chain (Figure 3) around the lifting point on top of the air compressor. Attach the other end of the lifting strap or chain to the lifting device.
2. Next, place the air compressor on heavy duty jack stands (2) as shown in Figure 3.

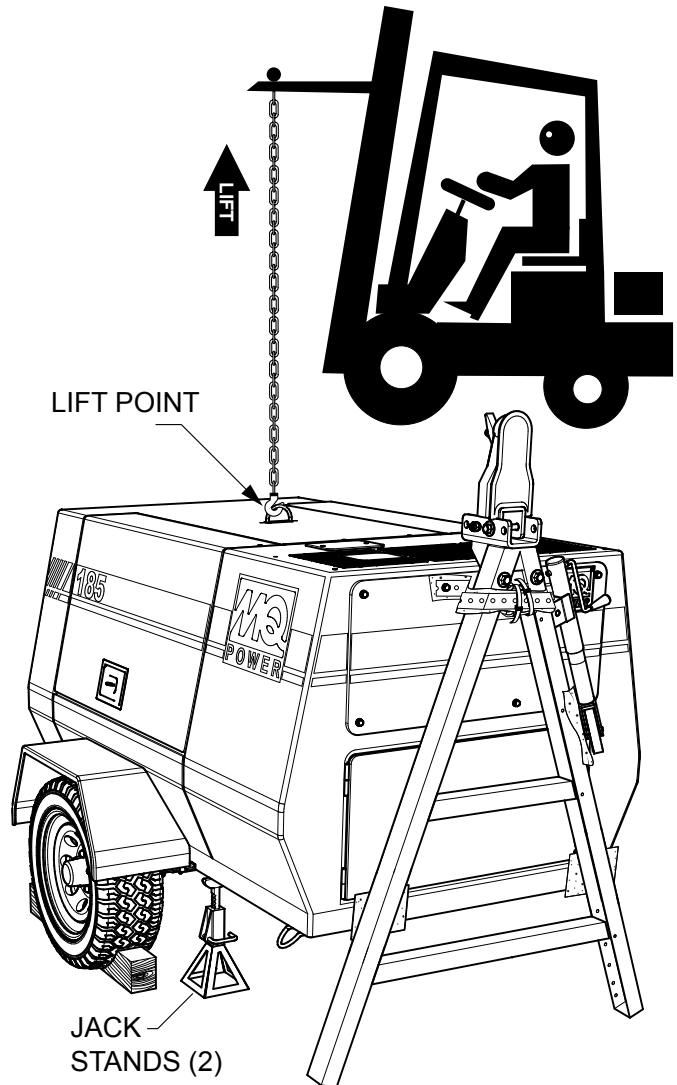


Figure 3. Raising Air Compressor

## UNSECURING TRAILER A-FRAME

### NOTICE

Two persons may be required to safely unsecure the trailer A-frame from the air compressor.

1. Using a 13mm socket, remove the two muffler panel M8-1.25 x 15mm screws and M8 flat washers (Figure 4) that secure the trailer A-frame metal fastening ribbon.
2. Using a 19mm socket, remove the M12-1.75 x 30mm screws, M12 lock washers, M12 nuts, and M12 flat washers (2) that secure the trailer A-frame (Figure 4) to the air compressor frame.
3. Remove the A-frame.
4. Remove protective materials that may be placed between the A-frame and air compressor.
5. Reinstall and tightly secure the hardware (Figure 4) removed in Step 1 and Step 2.

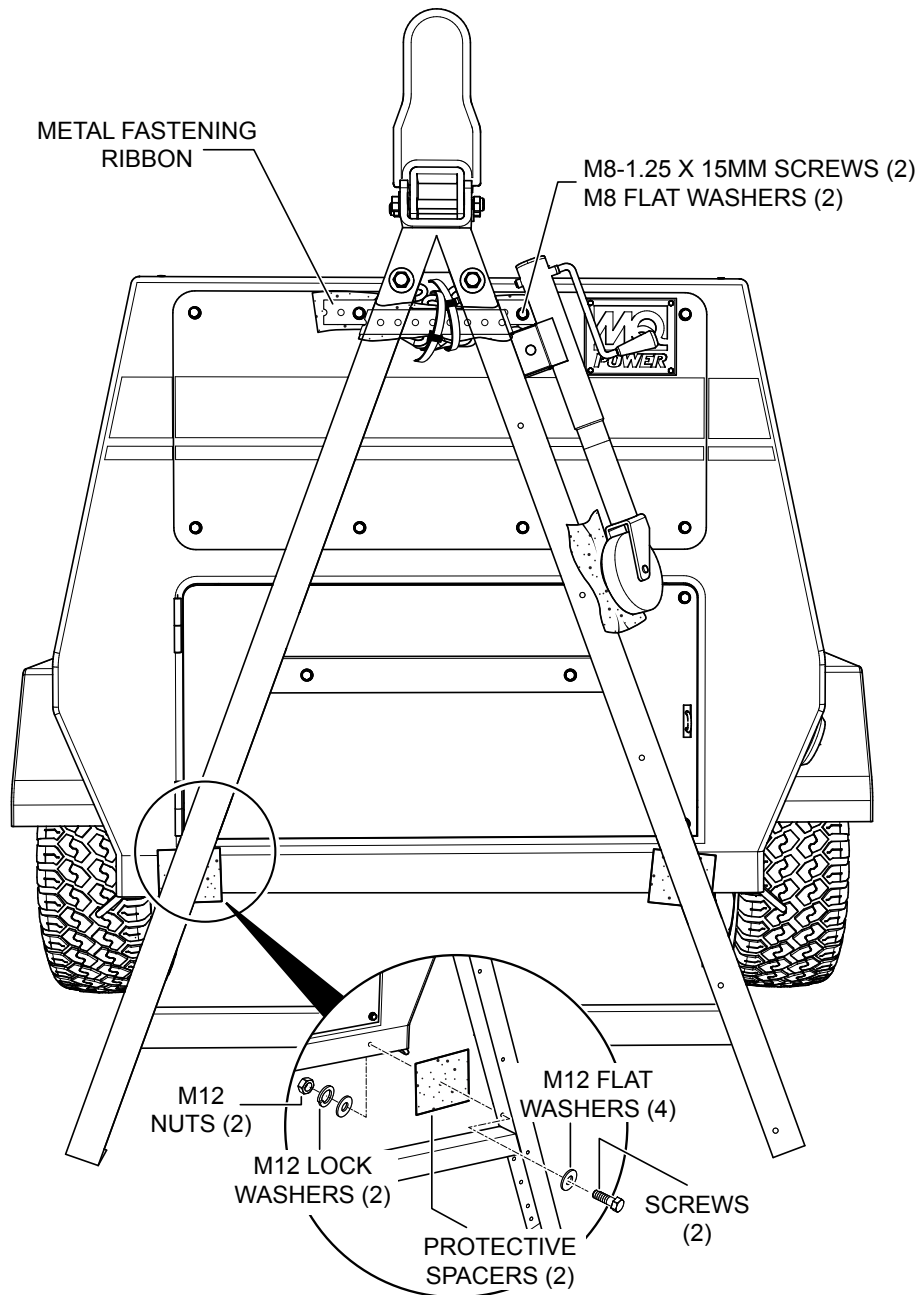
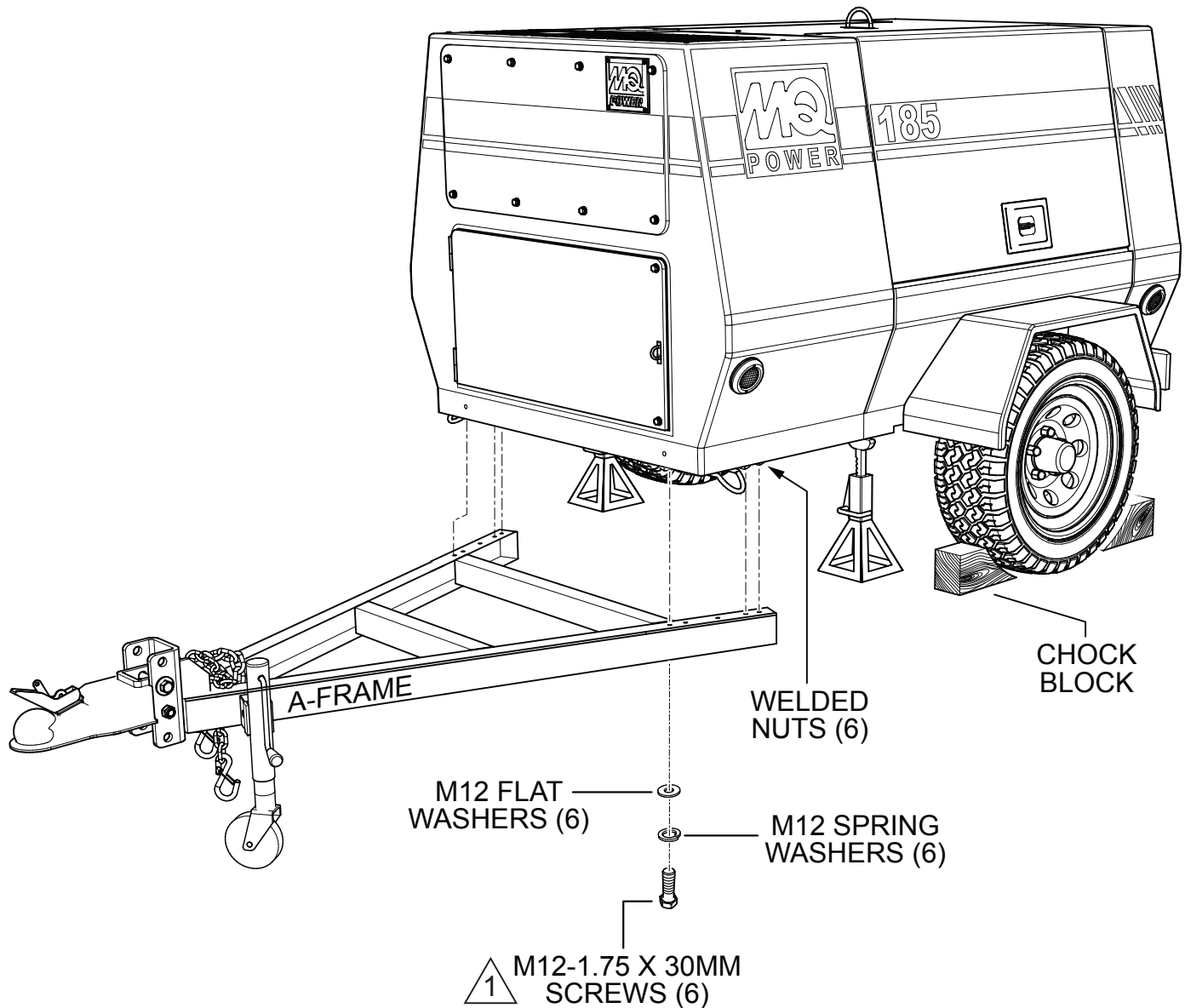


Figure 4. Removing Trailer A-Frame

## A-FRAME INSTALLATION

1. Working with another person, raise and align the A-frame mounting holes (6) with the air compressor frame welded nuts (6) as shown in Figure 5.
2. Continue holding the A-frame in alignment and using a 19mm socket, secure the A-frame to the air compressor frame using six M12-1.75 x 30mm screws, M12 flat washers, and M12 spring washers.
3. Torque hardware to 68.6 ft-lbs (93 N•m).



### NOTE:

1 TORQUE HARDWARE TO 68.6 ft-lbs (93 N•m).

Figure 5. A-Frame Installation

## TOOL TRAY INSTALLATION

1. Open the left side cabinet panel of the air compressor and locate the tool tray and tool tray mounting hardware.
2. Turn the storage compartment door thumb screws (2) (Figure 6) counterclockwise and open the panel.
3. Insert the tool tray in the open space behind the storage compartment door and align the mounting holes (Figure 6) with the four A-frame welding nuts.
4. Using a 13mm socket, secure the tool tray to the A-frame (Figure 6) using four M8-1.25 x 15mm screws, M8 lock washers, and M8 flat washers.

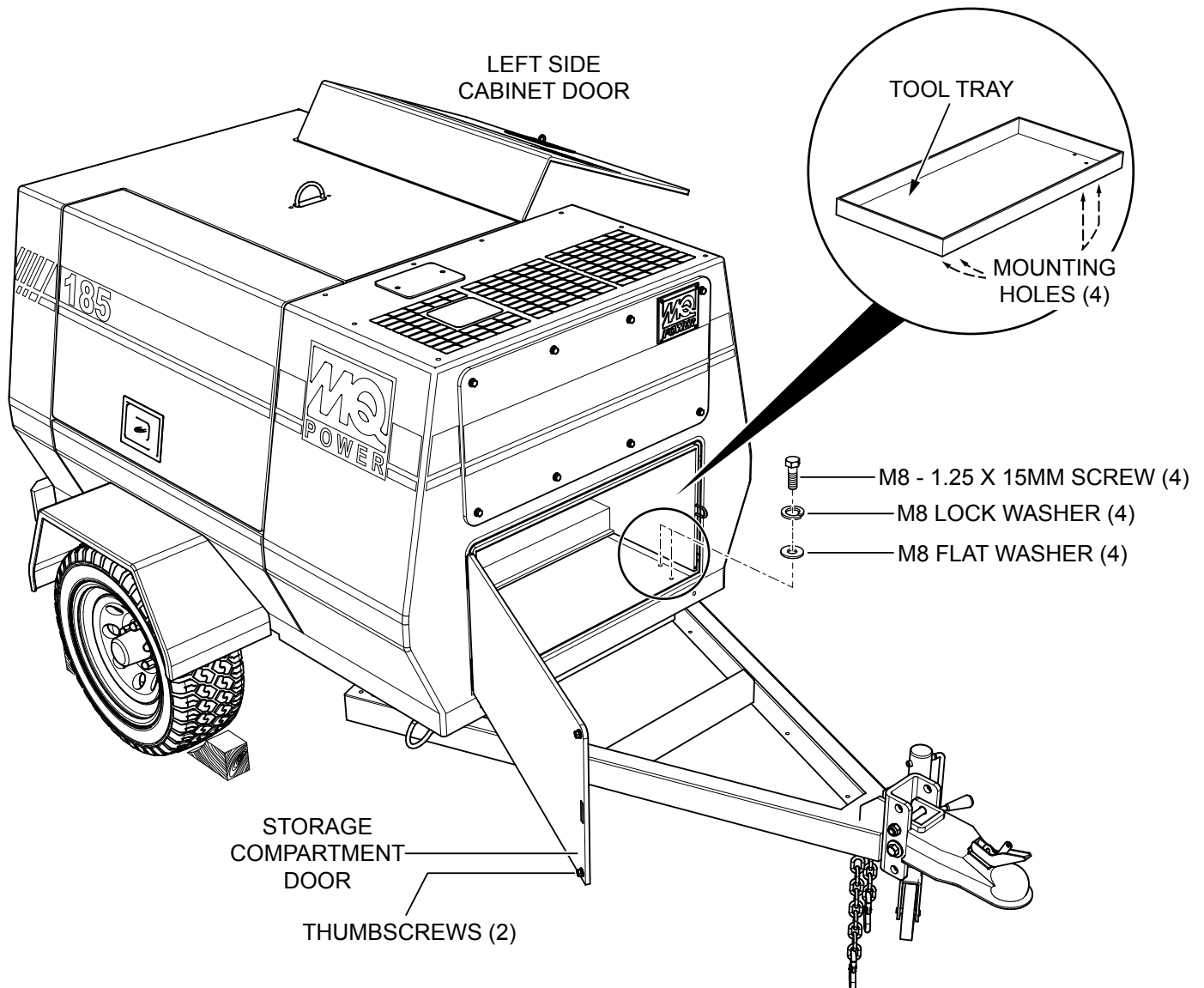
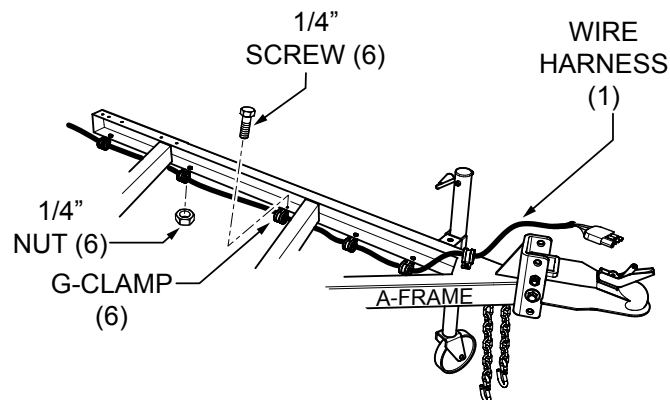


Figure 6. Tool Tray Installation

## WIRE ROUTING INSTALLATION

1. Open the left side cabinet panel of the air compressor and locate the coiled wire harness.
2. Locate the six 1/4-20 x 3/4" G-clamps, 1/4" screws, and 1/4" nuts in the kit.
3. Route the loose portion of the wire harness through the hole at the bottom (Figure 7) of the air compressor frame.
4. Route the loose portion of the wire harness along the A-frame to the A-frame tongue.
5. Using an 12mm socket, secure the wire harness to the A-frame using six 1/4-20 x 3/4" G-clamps, 1/4" screws, and 1/4" nuts.



**Figure 7. Wiring and G-Clamp Installation**

## POST-INSTALLATION

1. Check that the A-frame and tool tray are secured tightly.
2. Remove the two heavy duty jack stands from the air compressor.
3. Using the lifting device, slowly lower the air compressor until the A-frame jackstand supports the weight of the air compressor.
4. Remove the lifting strap or chain from the lifting point on top of the air compressor.

[illegible]



# DIS185SSI4F Air Compressor

## A-Frame Installation Instructions

---

## HERE'S HOW TO GET HELP

PLEASE HAVE THE MODEL AND SERIAL  
NUMBER ON-HAND WHEN CALLING

### UNITED STATES

#### ***MultiQuip Corporate Office***

18910 Wilmington Ave. Tel. (800) 421-1244  
Carson, CA 90746 Fax (310) 537-3927  
Contact: mq@multiquip.com

#### ***Service Department***

800-421-1244 Fax: 310-537-4259  
310-537-3700

#### ***Technical Assistance***

800-478-1244 Fax: 310-943-2238

#### ***MQ Parts Department***

800-427-1244 Fax: 800-672-7877  
310-537-3700 Fax: 310-637-3284

#### ***Warranty Department***

800-421-1244 Fax: 310-943-2249  
310-537-3700

---

### CANADA

#### ***MultiQuip***

4110 Industriel Boul. Tel: (450) 625-2244  
Laval, Quebec, Canada H7L 6V3 Tel: (877) 963-4411  
Contact: infocanda@multiquip.com Fax: (450) 625-8664

---

### UNITED KINGDOM

#### ***MultiQuip (UK) Limited Head Office***

Unit 2, Northpoint Industrial Estate, Tel: 0161 339 2223  
Globe Lane, Fax: 0161 339 3226  
Dukinfield, Cheshire SK16 4UJ  
Contact: sales@multiquip.co.uk

© COPYRIGHT 2015, MULTIQUIP INC.

MultiQuip Inc and the MQ logo are registered trademarks of MultiQuip Inc. and may not be used, reproduced, or altered without written permission. All other trademarks are the property of their respective owners and used with permission.

The information and specifications included in this publication were in effect at the time of approval for printing. Illustrations, descriptions, references and technical data contained in this document are for guidance only and may not be considered as binding. MultiQuip Inc. reserves the right to discontinue or change specifications, design or the information published in this publication at any time without notice and without incurring any obligations.

Your Local Dealer is:

