

# PARTS MANUAL



## *Mikasa* SERIES MODEL FU162A HIGH FREQUENCY INVERTER

Revision #0 (06/06/22)

To find the latest revision of this publication or associated operation manual, visit our website at: [www.multiquip.com](http://www.multiquip.com)



THIS MANUAL MUST ACCOMPANY THE EQUIPMENT AT ALL TIMES.

## **FU162A High-Frequency Inverter**

Explanation Of Code In Remarks Column..... 4  
Suggested Spare Parts ..... 5

### **Component Drawings**

Nameplate And Decals Assembly ..... 6-7  
Board And Packing Set Assembly ..... 8-9  
Body Assembly ..... 10-11  
Main Board And Fan Assembly ..... 12-13  
Panel Assembly ..... 14-15

#### **NOTICE**

Part numbers are subject to change without notice.



# EXPLANATION OF CODE IN REMARKS COLUMN

The following section explains the different symbols and remarks used in the Parts section of this manual. Use the help numbers found on the back page of the manual if there are any questions.

## NOTICE

The contents and part numbers listed in the parts section are subject to change **without notice**. Multiquip does not guarantee the availability of the parts listed.

## SAMPLE PARTS LIST

NO.	PART NO.	PART NAME	QTY.	REMARKS
1	12345	BOLT .....	1	INCLUDES ITEMS W/%
2%		WASHER, 1/4 IN. ....		NOT SOLD SEPARATELY
2%	12347	WASHER, 3/8 IN. ...	1	MQ-45T ONLY
3	12348	HOSE .....	A/R	MAKE LOCALLY
4	12349	BEARING .....	1	S/N 2345B AND ABOVE

## NO. Column

**Unique Symbols** — All items with same unique symbol (@, #, +, %, or >) in the number column belong to the same assembly or kit, which is indicated by a note in the “Remarks” column.

**Duplicate Item Numbers** — Duplicate numbers indicate multiple part numbers, which are in effect for the same general item, such as different size saw blade guards in use or a part that has been updated on newer versions of the same machine.

## NOTICE

When ordering a part that has more than one item number listed, check the remarks column for help in determining the proper part to order.

## PART NO. Column

**Numbers Used** — Part numbers can be indicated by a number, a blank entry, or TBD.

TBD (To Be Determined) is generally used to show a part that has not been assigned a formal part number at the time of publication.

A blank entry generally indicates that the item is not sold separately or is not sold by Multiquip. Other entries will be clarified in the “Remarks” Column.

## QTY. Column

**Numbers Used** — Item quantity can be indicated by a number, a blank entry, or A/R.

A/R (As Required) is generally used for hoses or other parts that are sold in bulk and cut to length.

A blank entry generally indicates that the item is not sold separately. Other entries will be clarified in the “Remarks” Column.

## REMARKS Column

Some of the most common notes found in the “Remarks” Column are listed below. Other additional notes needed to describe the item can also be shown.

**Assembly/Kit** — All items on the parts list with the same unique symbol will be included when this item is purchased.

Indicated by:

“INCLUDES ITEMS W/(unique symbol)”

**Serial Number Break** — Used to list an effective serial number range where a particular part is used.

Indicated by:

“S/N XXXXX AND BELOW”

“S/N XXXX AND ABOVE”

“S/N XXXX TO S/N XXX”

**Specific Model Number Use** — Indicates that the part is used only with the specific model number or model number variant listed. It can also be used to show a part is NOT used on a specific model or model number variant.

Indicated by:

“XXXXX ONLY”

“NOT USED ON XXXX”

**“Make/Obtain Locally”** — Indicates that the part can be purchased at any hardware shop or made out of available items. Examples include battery cables, shims, and certain washers and nuts.

**“Not Sold Separately”** — Indicates that an item cannot be purchased as a separate item and is either part of an assembly/kit that can be purchased, or is not available for sale through Multiquip.

## SUGGESTED SPARE PARTS

---

### FU162A HIGH FREQUENCY INVERTER

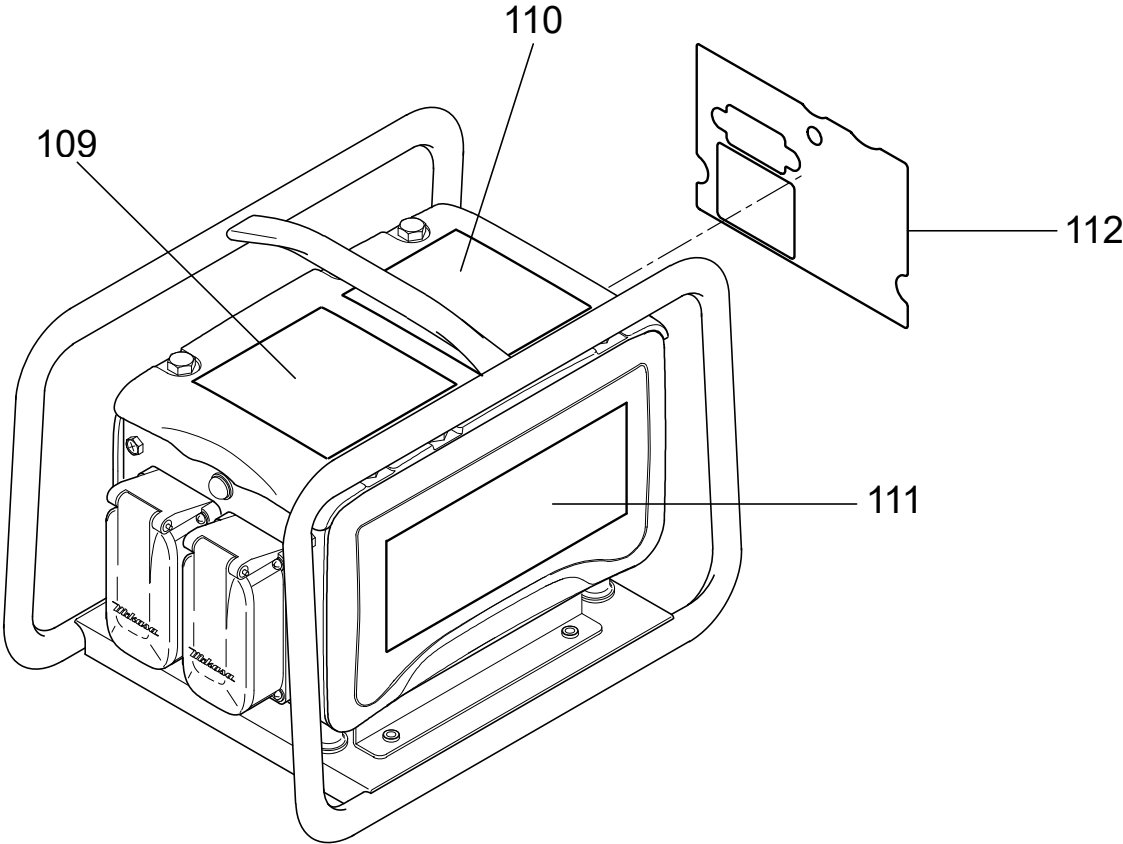
1 to 3 units

Qty.	P/N	Description
1.....	137930120.....	FAN ASSY.
1.....	137930150.....	MAIN AND DISPLAY, PLATE
1.....	137930070.....	DRIVE AND RELAY, PLATE
1.....	137930160.....	WATER PROOF PACKING SET

#### **NOTICE**

Part numbers on this Suggested Spare Parts list may supersede/replace the part numbers shown in the following parts lists.

**NAMEPLATE AND DECALS ASSY.**

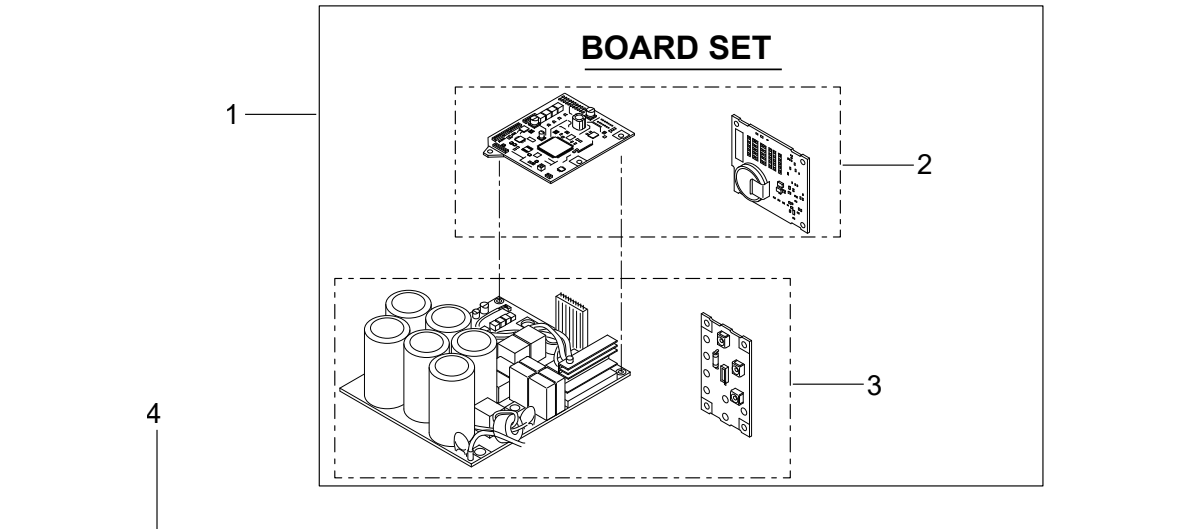


# NAMEPLATE AND DECALS ASSY.

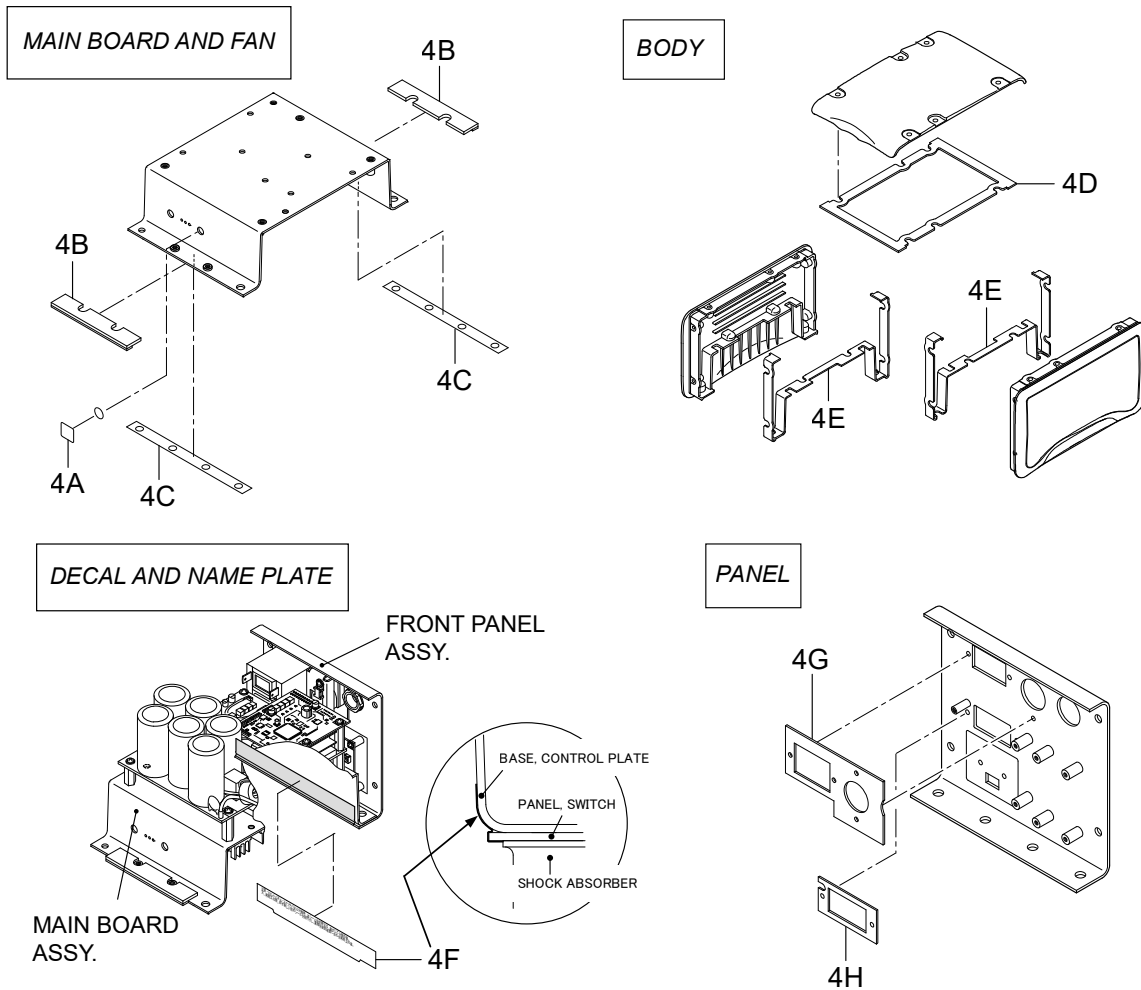
---

<u>NO.</u>	<u>PART NO.</u>	<u>PART NAME</u>	<u>QTY.</u>	<u>REMARKS</u>
109	920223740	DECAL: LED, EXPLAIN (EXP)	1	
110	920223770	DECAL: CAUTION	1	
111	920223730	DECAL: MODEL VOLTAGE	2	
112	920224850	PLATE, SERIAL NO.	1	

# BOARD AND PACKING SET ASSY.



## PACKING SET



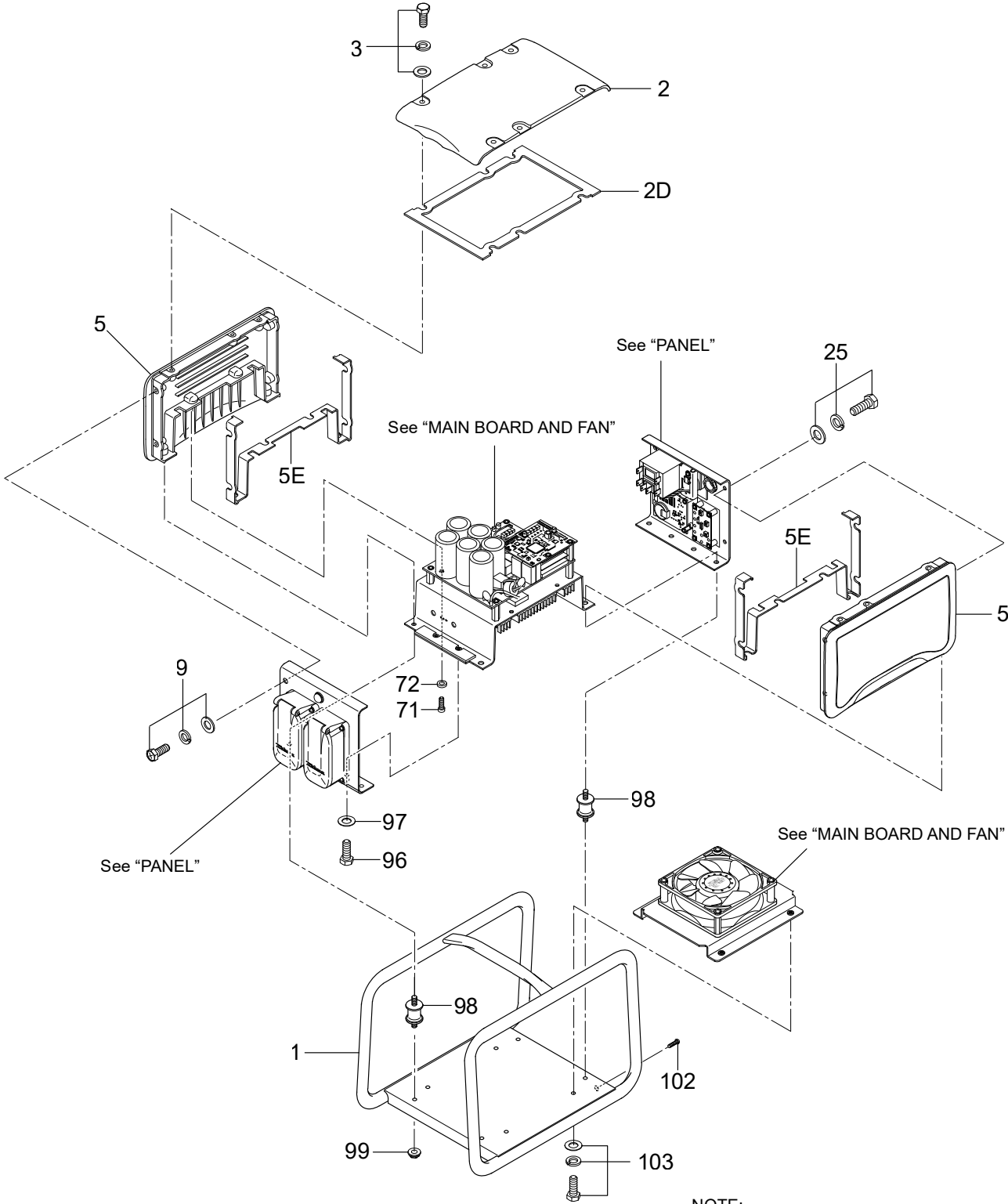


## **BOARD AND PACKING SET ASSY.**

---

<u>NO.</u>	<u>PART NO.</u>	<u>PART NAME</u>	<u>QTY.</u>	<u>REMARKS</u>
1	137930100	BOARD SET .....	1.....	INCLUDES ITEMS W/\$
2\$	137930150	MAIN AND DISPLAY, PLATE	1	
3\$	137930070	DRIVE AND RELAY, PLATE	1	
4	137930160	WATER PROOF PACKING SET .....	1.....	INCLUDES ITEMS W/#
4A#		MAIN BOARD AND FAN GASKET	1	
4B#		MAIN BOARD AND FAN GASKET	2	
4C#		MAIN BOARD AND FAN GASKET	2	
4D#		BODY GASKET	1	
4E#		BODY GASKET	2	
4F#		DECAL AND NAME PLATE GASKET	1	
4G#		PANEL GASKET	1	
4H#		PANEL GASKET	1	

# BODY ASSY.

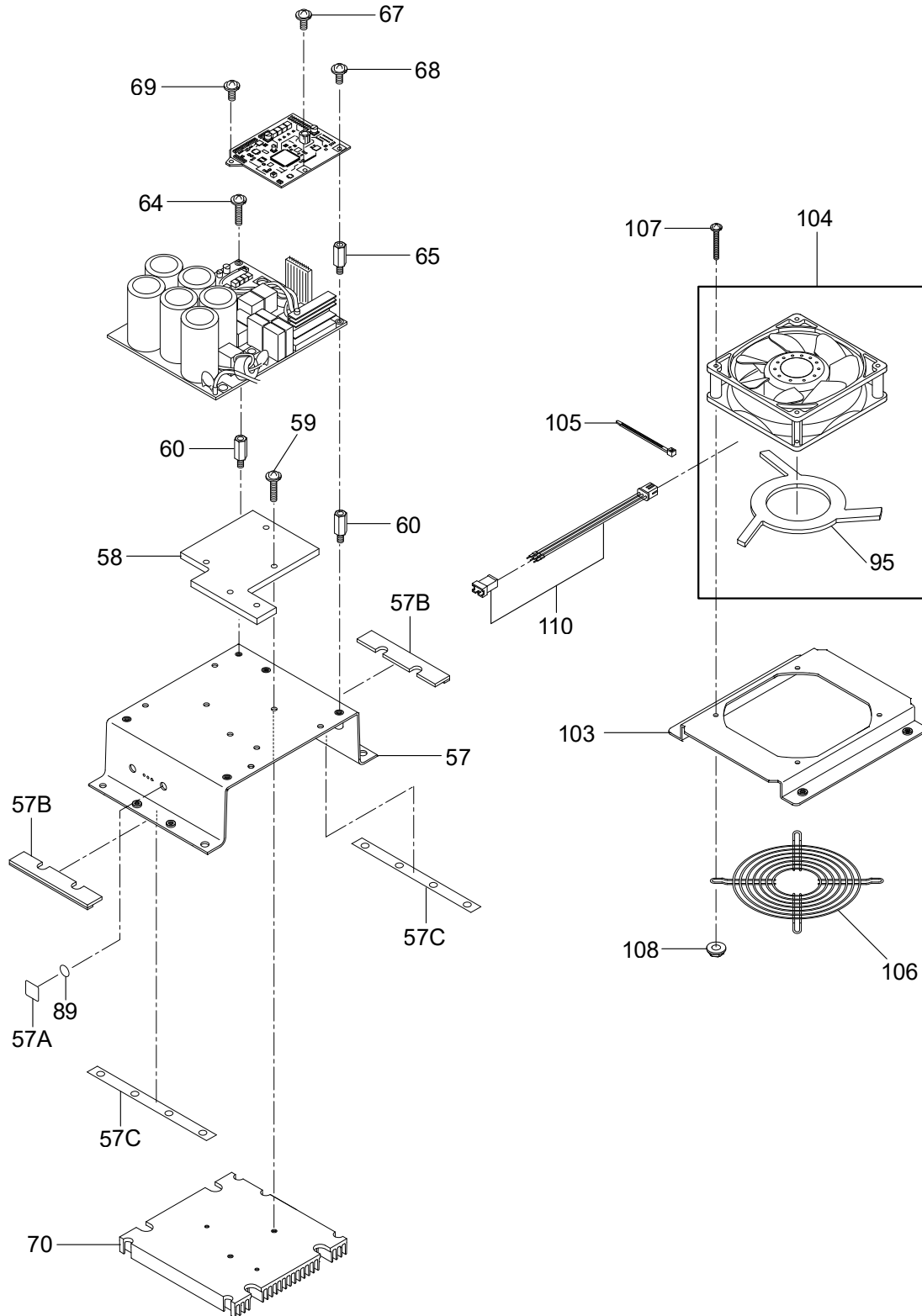


NOTE:  
Packing 2D, 5E are sold only as packing set.  
See "BOARD AND PACKING SET".

## BODY ASSY.

<u>NO.</u>	<u>PART NO.</u>	<u>PART NAME</u>	<u>QTY.</u>	<u>REMARKS</u>
1	137118220	FRAME	1	
2	137118160	COVER UP	1	
2D		BODY GASKET .....	1.....	REFERENCE P/N 137930160 WATER PROOF PACKING SET
3	002440616	BOLT 6 X 16, W/LOCK/FLAT WASHER SUS	6	
5	137118150	COVER, REAR	2	
5E		BODY GASKET .....	2.....	REFERENCE P/N 137930160 WATER PROOF PACKING SET
9	002440512	BOLT 5 X 12, W/LOCK/FLAT WASHER SUS	4	
25	002440512	BOLT 5 X 12, W/LOCK/FLAT WASHER SUS	4	
71	001250512	CROSS HEAD BOLT 5 X 12 SUS	4	
72	033910210	SEAL, WASHER SM-5	4	
96	001250512	CROSS HEAD BOLT 5 X 12 SUS	4	
97	033910210	SEAL, WASHER SM-5	4	
98	135010750	SHOCK ABSORBER	4	
99	022610606	NUT FLANGE M6 H	4	
102	094010047	SCREW 4 X 6, LOCK WASHER (SUS)	1	
103	009110050	BOLT 5 X 10, W/LOCK/FLAT WASHER SUS	4	

# MAIN BOARD AND FAN ASSY.

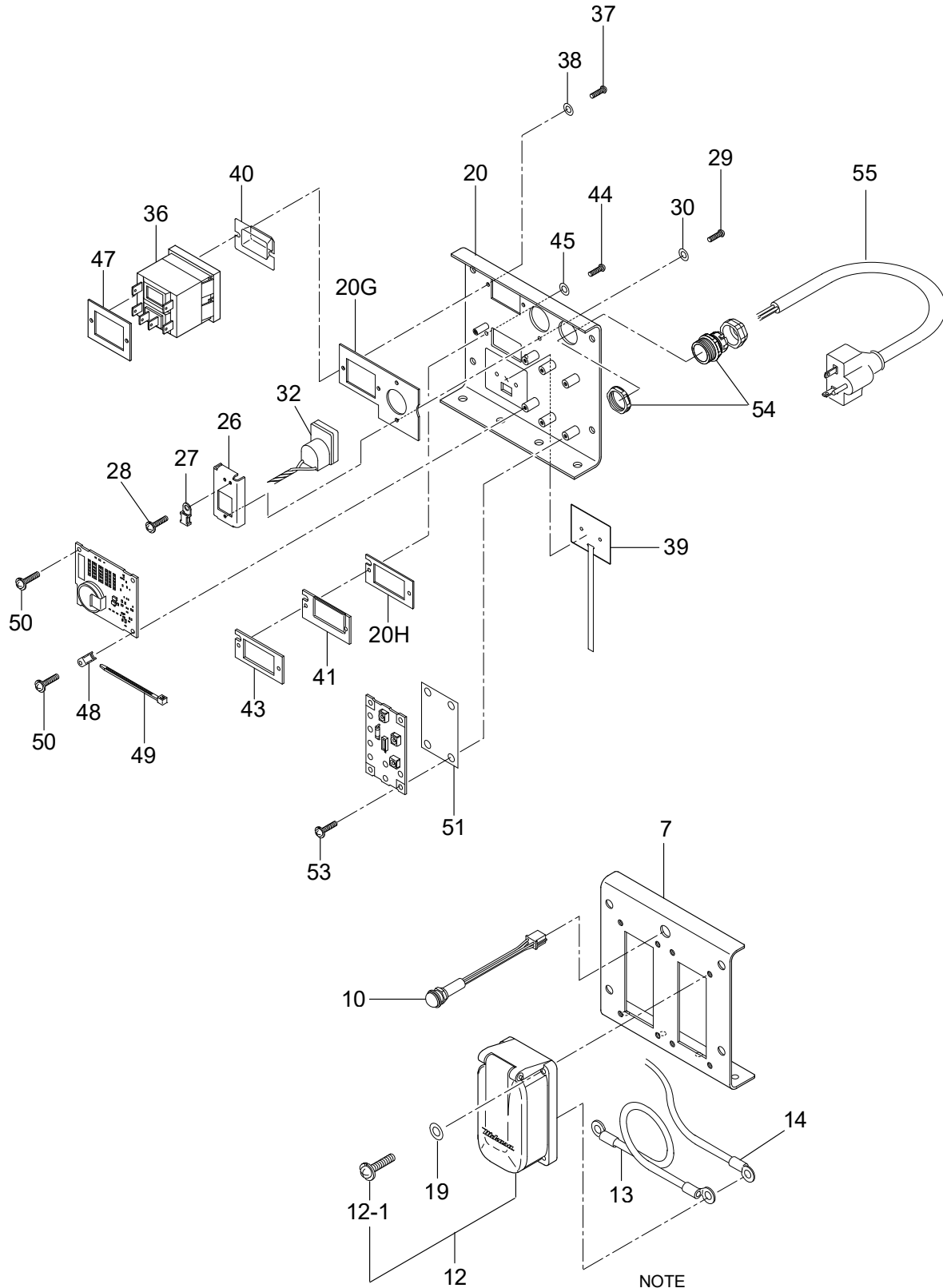


NOTE  
Packing 57A-57C are sold only as packing set.  
See "BOARD AND PACKING SET".

## MAIN BOARD AND FAN ASSY.

<u>NO.</u>	<u>PART NO.</u>	<u>PART NAME</u>	<u>QTY.</u>	<u>REMARKS</u>
57	137218810	BASE, CONTROL PLATE	1	
57A		MAIN BOARD AND FAN GASKET .....	1.....	REFERENCE P/N 137930160 WATER PROOF PACKING SET
57B		MAIN BOARD AND FAN GASKET .....	2.....	REFERENCE P/N 137930160 WATER PROOF PACKING SET
57C		MAIN BOARD AND FAN GASKET .....	2.....	REFERENCE P/N 137930160 WATER PROOF PACKING SET
58	137020010	IPM SPACER	1	
59	091605015	SCREW 5 X 15, W/LOCK/FLAT WASHER	2	
60	137020020	METAL SPACER M4 X 20	4	
64	091604008	SCREW 4 X 8, W/LOCK/FLAT WASHER	3	
65	137020030	METAL SPACER M4 X 35	1	
67	091602606	SCREW 2.6 X 6, W/LOCK/FLAT WASHER	1	
68	091604008	SCREW 4 X 8, W/LOCK/FLAT WASHER	1	
69	091603006	SCREW 3 X 6, W/LOCK/FLAT WASHER	1	
70	137351670	HEAT, SINK	1	
89	137010041	MICRO-TEXTILE FABRICSX4	1	
95\$	137459210	SPACER, COOLING FAN	1	
103	137218820	FAN CONTROL, PLATE	1	
104	137930120	FAN ASSY. (EXP).....	1.....	INCLUDES ITEM W/\$
105	454010020	CLAMP	1	
106	135010810	FAN GUARD	1	
107	091404050	SCREW 4 X 50, W/LOCK/FLAT WASHER SUS4		
108	022610404	NUT, FLANGE	4	
110	137930090	FAN CONNECTOR	1	

# PANEL ASSY.



NOTE  
Packing 20G, 20H are sold only as packing set.  
See "BOARD AND PACKING SET".

## PANEL ASSY.

<u>NO.</u>	<u>PART NO.</u>	<u>PART NAME</u>	<u>QTY.</u>	<u>REMARKS</u>
7	137218790	PANEL, FRONT	1	
10	137930030	PILOT LAMP ASSY.	1	
12	135010122	PLUG RECEPTACLE, GRAY	2	
12-1	091404020	SCREW 4 X 20 U	8	
13	137930080	CABLE ASSY., PLUG	1	
14	137930050	CABLE ASSY., BOARD	1	
19	033910200	SEAL WASHER SM-4	8	
20	137220640	PANEL, SWITCH	1	
20G		PANEL GASKET .....	1	REFERENCE P/N 137930160 WATER PROOF PACKING SET
20H		PANEL GASKET .....	1	REFERENCE P/N 137930160 WATER PROOF PACKING SET
26	137466590	V-METER PLATE, WATERPROOF	1	
27	137020040	FIXED BASE TA1S8	1	
28	091603006	SCREW 3 X 6, W/LOCK/FLAT WASHER	1	
29	091403020	SCREW 3 X 20 SUS	2	
30	033910190	SEAL WASHER SM-3	2	
32	137930110	VOLT-METER ASSY.	1	
36	137474840	CIRCUIT PROTECTOR	1	
37	091403020	SCREW 3 X 20 SUS	2	
38	033910190	SEAL WASHER SM-3	2	
39	137910180	FREQUENCY SET SWITCH	1	
40	137474860	SWITCH COVER	1	
41	137459380	F. DISPLAY WINDOW	1	
43	137459410	BRACKET	1	
44	091403012	SCREW 3 X 12 SUS	2	
45	033910190	SEAL WASHER SM-3	2	
47	137474850	BRACKET, V-METER	1	
48	137020040	FIXED BASE TA1S8	1	
49	454010020	CLAMP	1	
50	091603008	SCREW 3 X 8, W/LOCK/FLAT WASHER	3	
51	137020050	INSULATION SHEET	1	
53	091603006	SCREW 3 X 6, W/LOCK/FLAT WASHER	4	
54	183011291	CORD HOLDER ASSY.	1	
55	137469770	CORD WITH PLUG	1	

# PARTS MANUAL

## HERE'S HOW TO GET HELP

PLEASE HAVE THE MODEL AND SERIAL  
NUMBER ON-HAND WHEN CALLING

### UNITED STATES

#### *Multiquip Inc.*

(310) 537- 3700  
6141 Katella Avenue Suite 200  
Cypress, CA 90630  
E-MAIL: [mq@multiquip.com](mailto:mq@multiquip.com)  
WEBSITE: [www.multiquip.com](http://www.multiquip.com)

### CANADA

#### *Multiquip*

(450) 625-2244  
4110 Industriel Boul.  
Laval, Quebec, Canada H7L 6V3  
E-MAIL: [infocanada@multiquip.com](mailto:infocanada@multiquip.com)

### UNITED KINGDOM

#### *Multiquip (UK) Limited Head Office*

0161 339 2223  
Unit 2, Northpoint Industrial Estate,  
Globe Lane,  
Dukinfield, Cheshire SK16 4UJ  
E-MAIL: [sales@multiquip.co.uk](mailto:sales@multiquip.co.uk)

© COPYRIGHT 2022, MULTIQUIP INC.

Multiquip Inc, the MQ logo are registered trademarks of Multiquip Inc. and may not be used, reproduced, or altered without written permission. All other trademarks are the property of their respective owners and used with permission.

This manual MUST accompany the equipment at all times. This manual is considered a permanent part of the equipment and should remain with the unit if resold.

The information and specifications included in this publication were in effect at the time of approval for printing. Illustrations, descriptions, references and technical data contained in this manual are for guidance only and may not be considered as binding. Multiquip Inc. reserves the right to discontinue or change specifications, design or the information published in this publication at any time without notice and without incurring any obligations.

Your Local Dealer is:

