

PARTS MANUAL



Mikasa SERIES
**MODELS FX30E6, FX40G6,
FX50G6, FX60E6
HIGH FREQUENCY VIBRATOR**

Revision #1 (10/07/22)

To find the latest revision of this publication or
associated operation manual, visit our website
at: www.multiquip.com



THIS MANUAL MUST ACCOMPANY THE EQUIPMENT AT ALL TIMES.

FX Series High Frequency Vibrator

Explanation Of Code In Remarks Column.....	4
Suggested Spare Parts	5

Component Drawings

FX30E6 Assembly	6–9
FX40G6 Assembly.....	10–13
FX50G6 Assembly.....	14–17
FX60E6 Assembly	18–21

NOTICE

Part numbers are subject to change without notice.

EXPLANATION OF CODE IN REMARKS COLUMN

The following section explains the different symbols and remarks used in the Parts section of this manual. Use the help numbers found on the back page of the manual if there are any questions.

NOTICE

The contents and part numbers listed in the parts section are subject to change **without notice**. Multiquip does not guarantee the availability of the parts listed.

SAMPLE PARTS LIST

NO.	PART NO.	PART NAME	QTY.	REMARKS
1	12345	BOLT	1	INCLUDES ITEMS W/%
2%		WASHER, 1/4 IN.		NOT SOLD SEPARATELY
2%	12347	WASHER, 3/8 IN. ...	1	MQ-45T ONLY
3	12348	HOSE	A/R	MAKE LOCALLY
4	12349	BEARING	1	S/N 2345B AND ABOVE

NO. Column

Unique Symbols — All items with same unique symbol (@, #, +, %, or >) in the number column belong to the same assembly or kit, which is indicated by a note in the “Remarks” column.

Duplicate Item Numbers — Duplicate numbers indicate multiple part numbers, which are in effect for the same general item, such as different size saw blade guards in use or a part that has been updated on newer versions of the same machine.

NOTICE

When ordering a part that has more than one item number listed, check the remarks column for help in determining the proper part to order.

PART NO. Column

Numbers Used — Part numbers can be indicated by a number, a blank entry, or TBD.

TBD (To Be Determined) is generally used to show a part that has not been assigned a formal part number at the time of publication.

A blank entry generally indicates that the item is not sold separately or is not sold by Multiquip. Other entries will be clarified in the “Remarks” Column.

QTY. Column

Numbers Used — Item quantity can be indicated by a number, a blank entry, or A/R.

A/R (As Required) is generally used for hoses or other parts that are sold in bulk and cut to length.

A blank entry generally indicates that the item is not sold separately. Other entries will be clarified in the “Remarks” Column.

REMARKS Column

Some of the most common notes found in the “Remarks” Column are listed below. Other additional notes needed to describe the item can also be shown.

Assembly/Kit — All items on the parts list with the same unique symbol will be included when this item is purchased.

Indicated by:

“INCLUDES ITEMS W/(unique symbol)”

Serial Number Break — Used to list an effective serial number range where a particular part is used.

Indicated by:

“S/N XXXXX AND BELOW”

“S/N XXXX AND ABOVE”

“S/N XXXX TO S/N XXX”

Specific Model Number Use — Indicates that the part is used only with the specific model number or model number variant listed. It can also be used to show a part is NOT used on a specific model or model number variant.

Indicated by:

“XXXXX ONLY”

“NOT USED ON XXXX”

“Make/Obtain Locally” — Indicates that the part can be purchased at any hardware shop or made out of available items. Examples include battery cables, shims, and certain washers and nuts.

“Not Sold Separately” — Indicates that an item cannot be purchased as a separate item and is either part of an assembly/kit that can be purchased, or is not available for sale through Multiquip.

SUGGESTED SPARE PARTS

FX SERIES HIGH FREQUENCY VIBRATOR

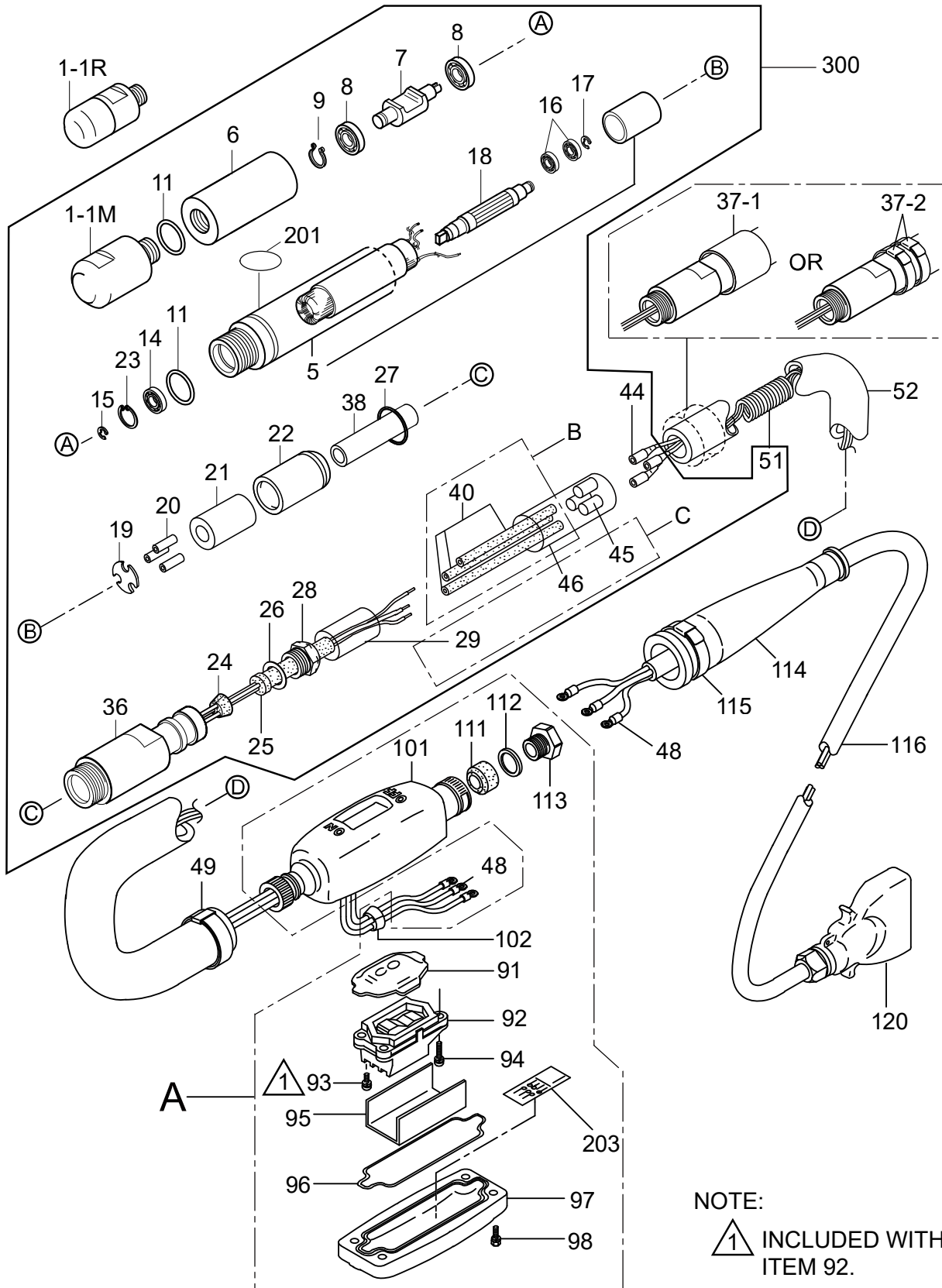
1 to 5 units


Qty.	P/N	Description
1.....	111213680.....	SWITCH BOX
1.....	111343571.....	SWITCH ASSY.
3.....	111449120.....	SEALING RING
3.....	111013622.....	PLUG ASSY. (MALE) GRAY

NOTICE

Part numbers on this Suggested Spare Parts list may supersede/replace the part numbers shown in the following parts lists.

FX30E6 ASSY.

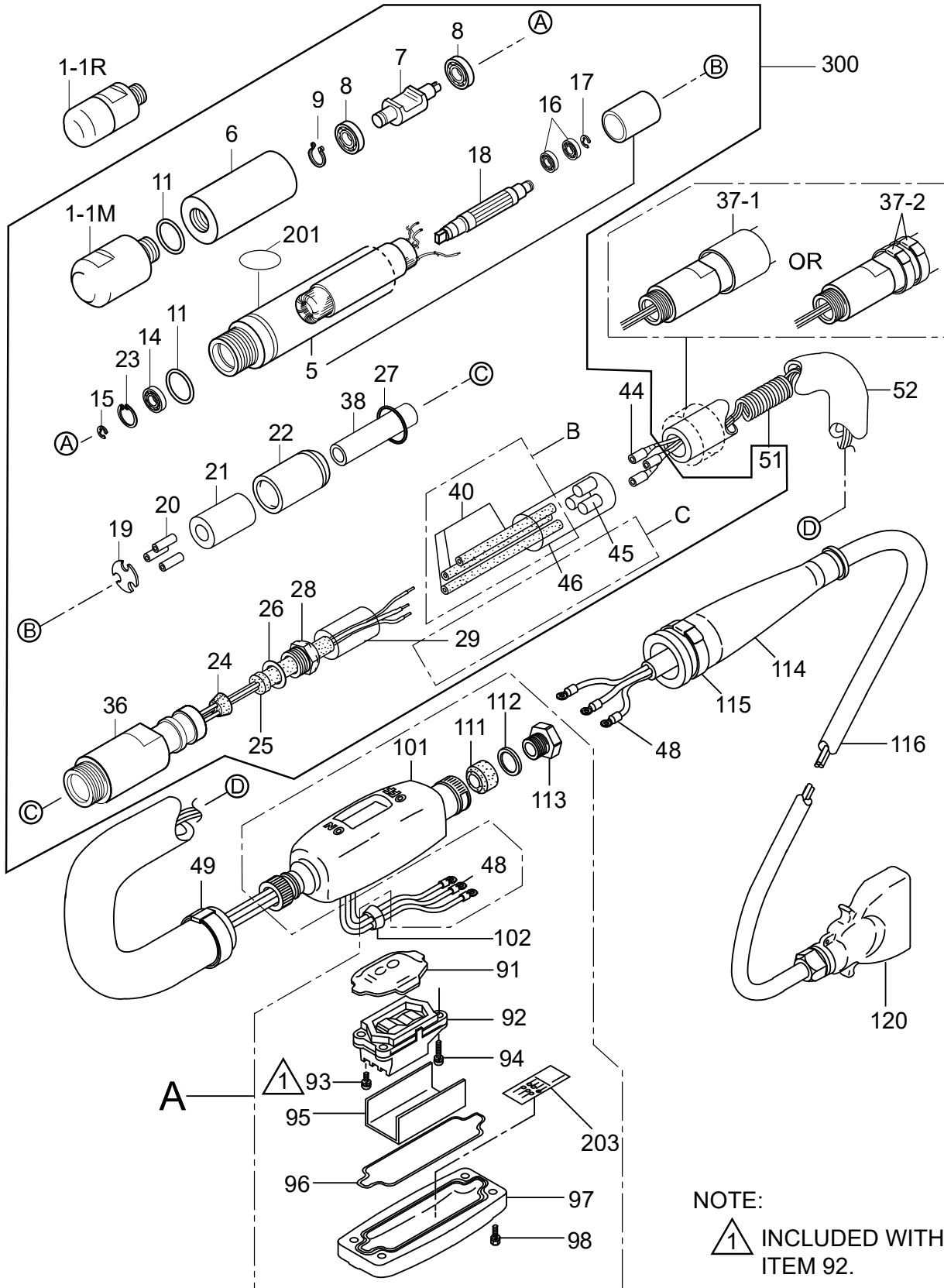


NOTE:
 INCLUDED WITH
 ITEM 92.

FX30E6 ASSY.

<u>NO.</u>	<u>PART NO.</u>	<u>PART NAME</u>	<u>QTY.</u>	<u>REMARKS</u>
A	111931101	SWITCH BOX ASSY.	1.....	INCLUDES ITEMS W/\$
B@	111931130	RUBBER TUBE SET, D3.5	1.....	INCLUDES ITEMS W/& CUT FOR NEEDED LENGTH
C@	111931220	CONTRACTION TUBE SET	1.....	INCLUDES ITEMS W/# CUT FOR NEEDED LENGTH
1-1M@	111450190	HEAD CAP	1	
1-1R	111457150	RUBBER HEAD CAP (D32)	1	
5@	111344920	MOTOR CASE W/S, H	1	
6@	151448330	HEAD CASE	1	
7@	111436520	ECCENTRIC ROTATOR	1	
8@	042506000	BEARING, 600ZZSG	2	
9@	080200100	STOP RING, S-10	1	
11@	050300240	O-RING, S-24	2	
14@	042500608	BEARING, 608ZZSG	1	
15@	080300060	STOP RING, E-6	1	
16@	042500686	BEARING, 686ZZSG	2	
17@	080300050	STOP RING, E-5	1	
18@	111013630	ROTOR	1	
19@	111426720	SEAT	1	
20@	111425560	TUBE, 3.2 X 4.2 X 40L	3	
21@	121437650	CORD HOLDER, 10-19-45L	1	
22@	111448350	GUIDE HOLDER	1	
23@	080100220	STOP RING, R-22	1	
24@	111457080	CORD BUSH, D15-2.9	1	
25@	111457100	CORD PROTECTOR (LEAD)	1	
26@	121437551	SLIP WASHER	1	
27@	050200200	O-RING, P-20	1	
28@	111461350	NUT, CORD PROTECTOR	1	
29#@	959027101	CONTRACTION TUBE, 3/4"-60	1	
36@	121437660	HOSE COUPLING	1	
37-1	121437690	HOSE CLAMP 35D-50L	1	
37-2	111010220	CLAMP AB2050	2	
37-2	121010221	CLAMP JS202-1	2	
38@	111448390	TUBE 7D-10D-46L	1	
40&@	959026729	RUBBER TUBE, D3.5-1M	1.....	1 PC = 1 M
44@	121010030	TERMINAL SLEEVE TMDB-2	3	
45#@	959026529	CONTRACTION TUBE, D6-1M	1.....	1 PC = 1 M
46#@	959027029	CONTRACTION TUBE, D14-1M	1.....	1 PC = 1 M
48	111013920	TERMINAL TMEX 2-5M	6	
49	121010221	CLAMP JS202-1	1	

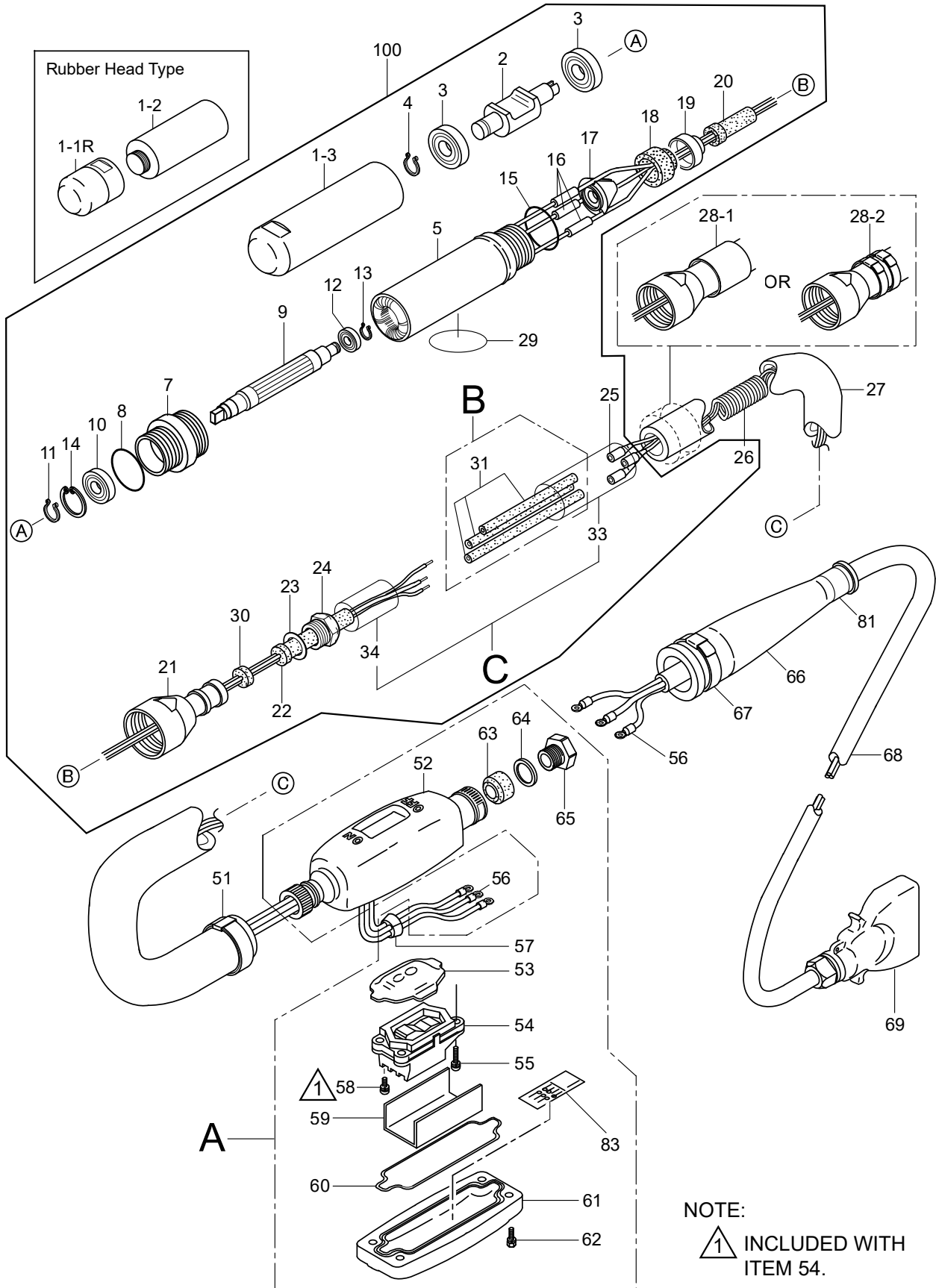
FX30E6 ASSY. (CONT'D.)



FX30E6 ASSY. (CONT'D.)

<u>NO.</u>	<u>PART NO.</u>	<u>PART NAME</u>	<u>QTY.</u>	<u>REMARKS</u>
51@	111347473	CURLY CODE (2 SQ. MM)	1	
52	959028211	HOSE, 31-19-2P (UNIT/METER)	1	
91\$	111457231	PUSH COVER	1	
92\$	111343571	SWITCH ASSY.....	1	INCLUDES ITEMS W/%
93%\$	094010033	SCREW 5 X 10 LOCK, WASHER (S)	6	
94\$	091605025	SCREW 5 X 25 LOCK/FLAT, WASHER	4	
95\$	111437890	INSULATING PAPER	1	
96\$	111449120	SEAL RING	1	
97\$	111213700	COVER, SWITCH BOX	1	
98\$	002200620	BOLT 6 X 20, LOCK, WASHER	4	
101\$	111213680	SWITCH BOX	1	
102\$	111457110	CORD BUSH/TAPER/SWITCH BOX	1	
111\$	111013510	PRESSURE RUBBER, SWITCH BOX	1	
112\$	111435810	SLIPWASHER 16-24-1T	1	
113\$	111437760	NUT, (16D) SWITCH BOX	1	
114	111335850	CORD PROTECTOR, SW. BOX	1	
115	121010210	CLAMP JS 253	1	
116	959024410	CABTYRE CORD, 2-3C (UNIT/M).....	1	1 PC = 1 M
116	959024415	CABTYRE CORD, 2 X 3 X 15M	1	
120	111013622	PLUG ASSY. (MALE) GRAY	1	
120	111013542	PLUG ASSY. (MALE) GREEN.....	1	REPLACES P/N 111013731
201@	920100600	DECAL: M-MARK 54D	1	
203\$	920111390	DECAL: SERIAL NO.	1	
300	111912121	VIBRATOR HEAD ASSY.....	1	INCLUDES ITEMS W/@

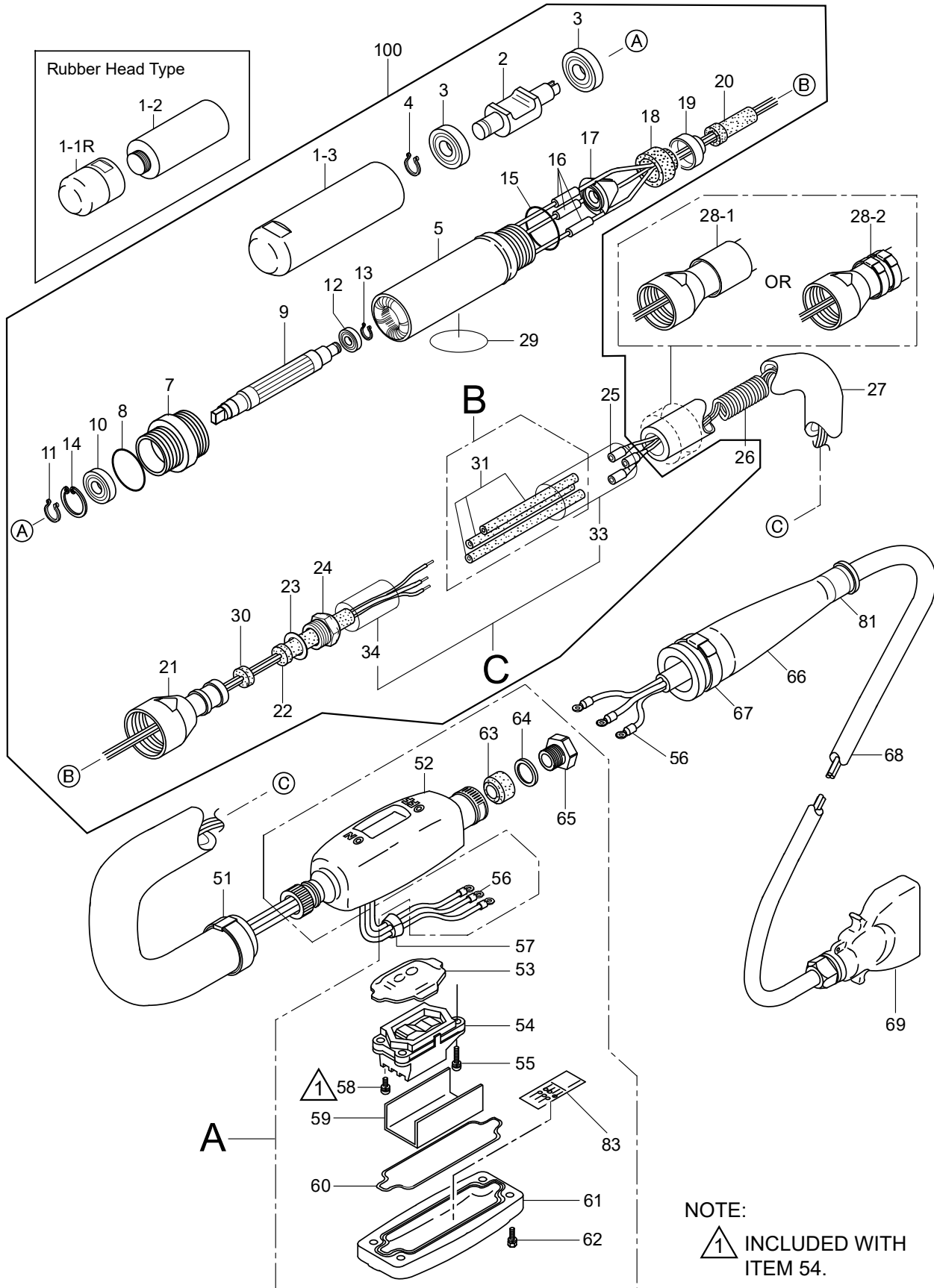
FX40G6 ASSY.




FX40G6 ASSY.

<u>NO.</u>	<u>PART NO.</u>	<u>PART NAME</u>	<u>QTY.</u>	<u>REMARKS</u>
A	111931101	SWITCH BOX ASSY.	1.....	INCLUDES ITEMS W/\$
B@	111931130	RUBBER TUBE SET, D3.5	1.....	INCLUDES ITEMS W/& CUT FOR NEEDED LENGTH
C@	111931260	CONTRACTION TUBE SET	1.....	INCLUDES ITEMS W/# CUT FOR NEEDED LENGTH
1-1R	111457160	RUBBER HEAD CAP	1	
1-2	111351060	HEAD CASE	1	
1-3@	111351040	HEAD CASE	1	
2@	111435640	ECCENTRIC ROTATOR	1	
3@	044606202	BEARING, 6202VVSGR	2	
4@	080200150	STOP RING, S-15	1	
5@	111343520	MOTOR CASE W/STATOR	1	
7@	111435650	CASE JOINTER	1	
8@	050100300	O-RING, G-30	1	
9@	111013280	ROTOR	1	
10@	042506001	BEARING, 6001ZZSG	1	
11@	080200120	STOP RING, S-12	1	
12@	042500607	BEARING, 607ZZSG	1	
13@	080300060	STOP RING, E-6	1	
14@	080100280	STOP RING, R-28	1	
15@	050200300	O-RING, P-30	1	
16@	151446030	TUBE, 3.2-4.2-20L	3	
17@	111465700	CORD HOLDER, TAPER	1	
18@	111465710	HOLDER	1	
19@	111435680	HOLDER	1	
20@	151448571	PROTECT TUBE	1	
21@	121437580	HOSE COUPLING, VH-42	1	
22@	111457100	CORD PROTECTOR (LEAD)	1	
23@	121437551	SLIP WASHER	1	
24@	111461350	NUT, CORD PROTECTOR	1	
25@	121010030	TERMINAL SLEEVE TMDB-2	3	
26@	111347473	CURLY CORD, (2 SQ. MM)	1	
27	959028111	HOSE, 35-19-2P	1	
28-1	111461330	HOSE CLAMP	1	
28-2	111010220	CLAMP, AB2050	2	
28-2	122010060	CLAMP, JS 245	2	
29@	920100600	DECAL: M-MARK 54D	1	
30@	111457080	CORD BUSH, D15-2.9	1	
31&@	959026729	RUBBER TUBE, D3.5-1M	1.....	1 PC = 1 M
33#@	959027029	CONTRACTION TUBE, D14-1M	1.....	1 PC = 1 M
34#@	959027101	CONTRACTION TUBE, 3/4"-60	1	

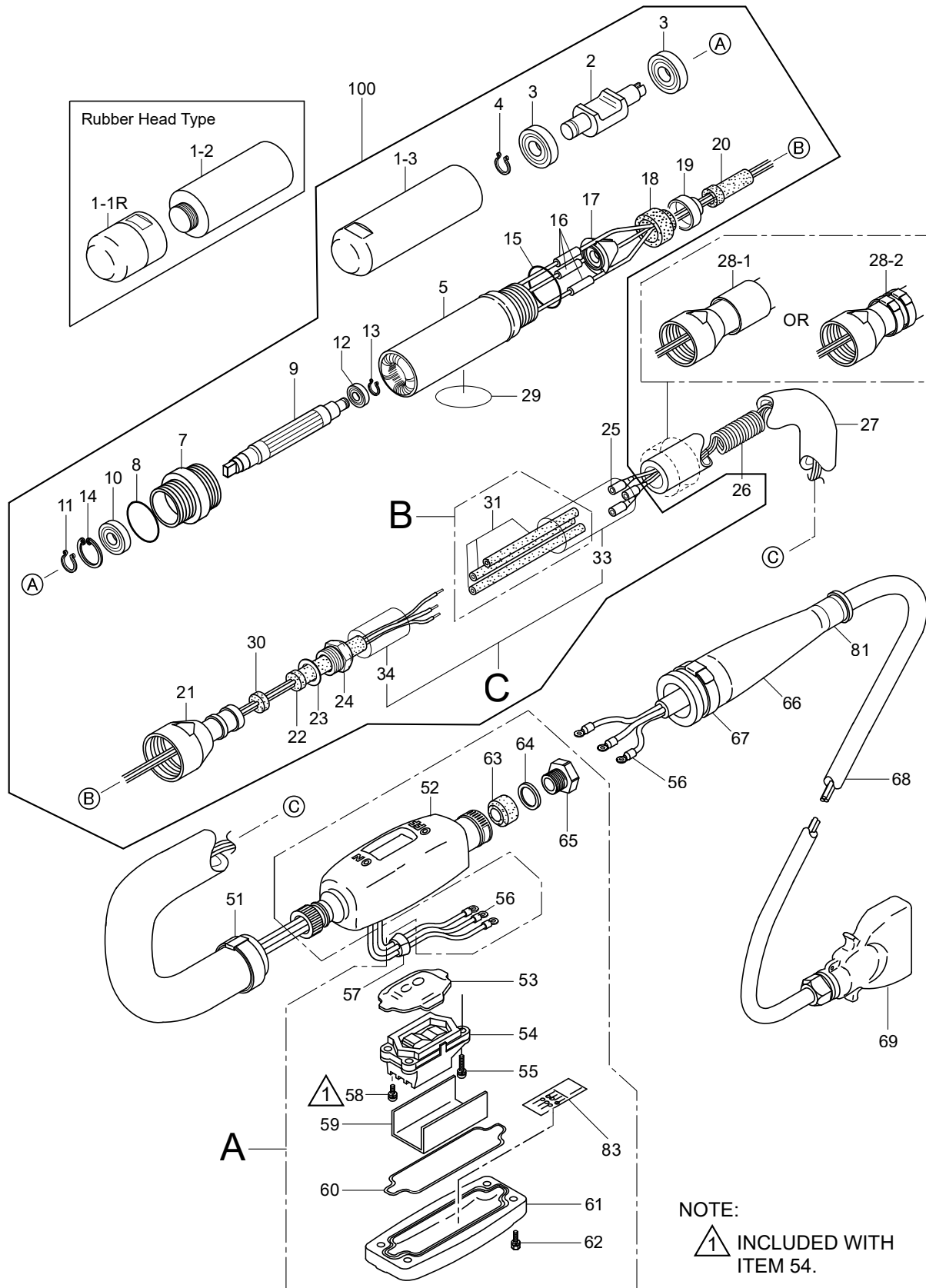
FX40G6 ASSY. (CONT'D.)



NOTE:
 INCLUDED WITH ITEM 54.

FX40G6 ASSY. (CONT'D.)

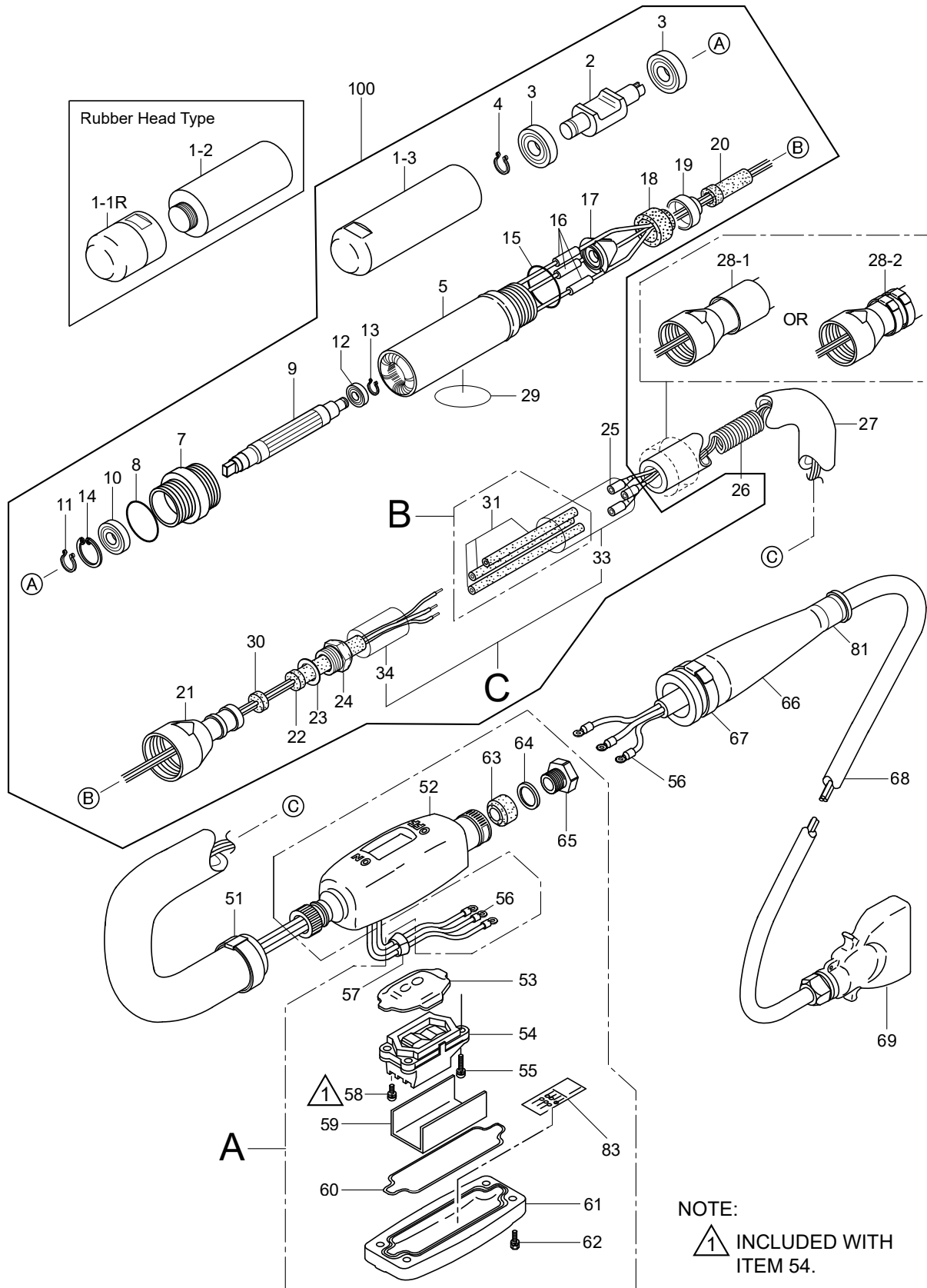
<u>NO.</u>	<u>PART NO.</u>	<u>PART NAME</u>	<u>QTY.</u>	<u>REMARKS</u>
51	122010060	CLAMP, JS 245	1	
52\$	111213680	SWITCH BOX	1	
53\$	111457231	PUSH COVER	1	
54\$	111343571	SWITCH ASSY.....	1	INCLUDES ITEMS W/%
55\$	091605025	SCREW 5 X 25 W/LOCK/FLAT WASHER	4	
56	111013920	TERMINAL, TMEX2-5M	6	
57\$	111457110	CORD BUSH, TAPER/SWITCH BOX	1	
58%\$	094010033	SCREW, 5 X 10 W/LOCK WASHER (S)	6	
59\$	111437890	INSULATING PAPER	1	
60\$	111449120	SEAL RING	1	
61\$	111213700	COVER, SWITCH BOX	1	
62\$	002200620	BOLT, 6 X 20 LOCK WASHER	4	
63\$	111013510	PRESSURE RUBBER, SWITCH BOX	1	
64\$	111435810	SLIP WASHER 16-24-1T	1	
65\$	111437760	NUT, SWITCH BOX	1	
66	111335850	CORD PROTECTOR, SWITCH BOX	1	
67	121010210	CLAMP, JS 253	1	
68	959024410	CABTYRE CORD, 2-3C (UNIT/M).....	1	1 PC = 1 M
68	959024415	CABTYRE CORD, 2 X 3 X 15M	1	
69	111013622	PLUG ASSY. (MALE) GRAY	1	
69	111013542	PLUG ASSY. (MALE) GREEN	1	REPLACES P/N 111013731
81	920105890	DECAL: MODEL 40	1	
83\$	920112340	DECAL: SERIAL NO.	1	
100	111912111	VIBRATOR HEAD ASSY.....	1	INCLUDES ITEMS W/@



FX50G6 ASSY.

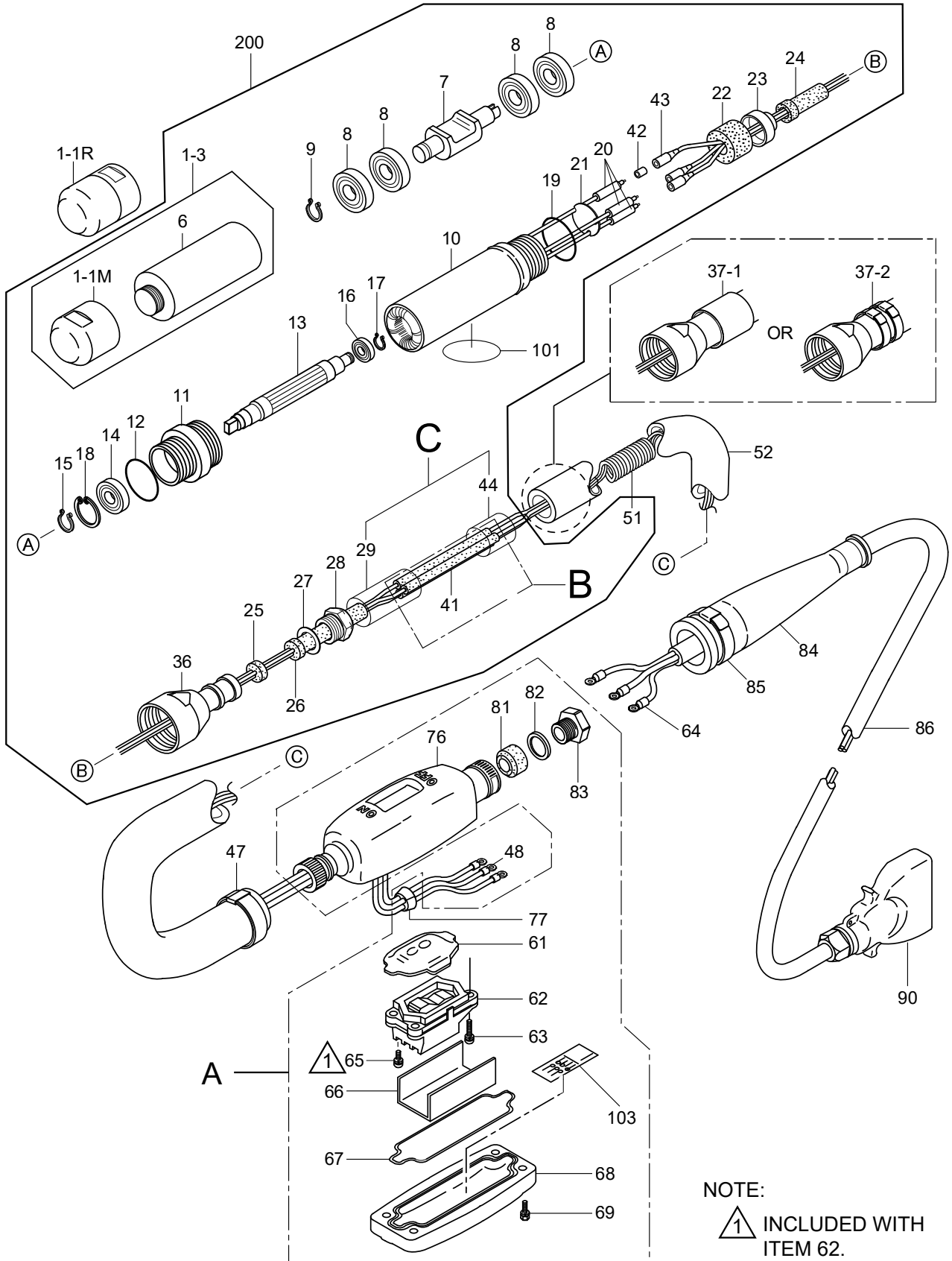
<u>NO.</u>	<u>PART NO.</u>	<u>PART NAME</u>	<u>QTY.</u>	<u>REMARKS</u>
A	111931101	SWITCH BOX ASSY.	1.....	INCLUDES ITEMS W/\$
B	111931150	RUBBER TUBE SET, D4.5	1.....	INCLUDES ITEMS W/& CUT FOR NEEDED LENGTH
C	111931260	CONTRACTION TUBE SET	1.....	INCLUDES ITEMS W/# CUT FOR NEEDED LENGTH
1-1R	111457170	RUBBER HEAD CAP	1	
1-2	111351070	HEAD CASE	1	
1-3@	111351050	HEAD CASE	1	
2@	111435610	ECCENTRIC ROTATOR	1	
3@	044606302	BEARING, 6302VVSGR	2	
4@	080200150	STOP RING, S-15	1	
5@	111343530	MOTOR CASE W/STATOR	1	
7@	111435630	CASE JOINTER	1	
8@	050100400	O-RING, G-40	1	
9@	111013370	ROTOR	1	
10@	042506002	BEARING, 6002ZZSG	1	
11@	080200150	STOP RING, S-15	1	
12@	042500608	BEARING, 608ZZSG	1	
13@	080300070	STOP RING, E-7	1	
14@	080100320	STOP RING, R-32	1	
15@	050200360	O-RING, P-36	1	
16@	959021422	TUBE, 4D-5D-20L	3	
17@	111465780	CORD HOLDER, TAPER	1	
18@	111465790	HOLDER, IN	1	
19@	111435210	HOLDER	1	
20@	111448400	PROTECT TUBE	1	
21@	121437710	HOSE COUPLING, VH-52	1	
22@	111457090	CORD PROTECTOR (LEAD)	1	
23@	121437551	SLIP WASHER	1	
24@	111461350	NUT, CORD PROTECTOR	1	
25@	111013290	TERMINAL SLEEVE, TG-B-5.5	3	
26@	111347483	CURLY CORD (3 SQ. MM)	1	
27	959028111	HOSE, 35-19-2P	1	
28-1	111461330	HOSE CLAMP	1	
28-2	111010220	CLAMP, AB2050	2	
28-2	122010060	CLAMP, JS 245	2	
29@	920100600	DECAL: M-MARK 54D	1	
30@	111457070	CORD BUSH, D15-3.8	1	
31&@	959026829	RUBBER TUBE, D4.5-1M	1.....	1 PC = 1 M
33#@	959027029	CONTRACTION TUBE, D14-1M	1.....	1 PC = 1 M
34#@	959027101	CONTRACTION TUBE, 3/4"-60	1	

FX50G6 ASSY. (CONT'D.)



FX50G6 ASSY. (CONT'D.)

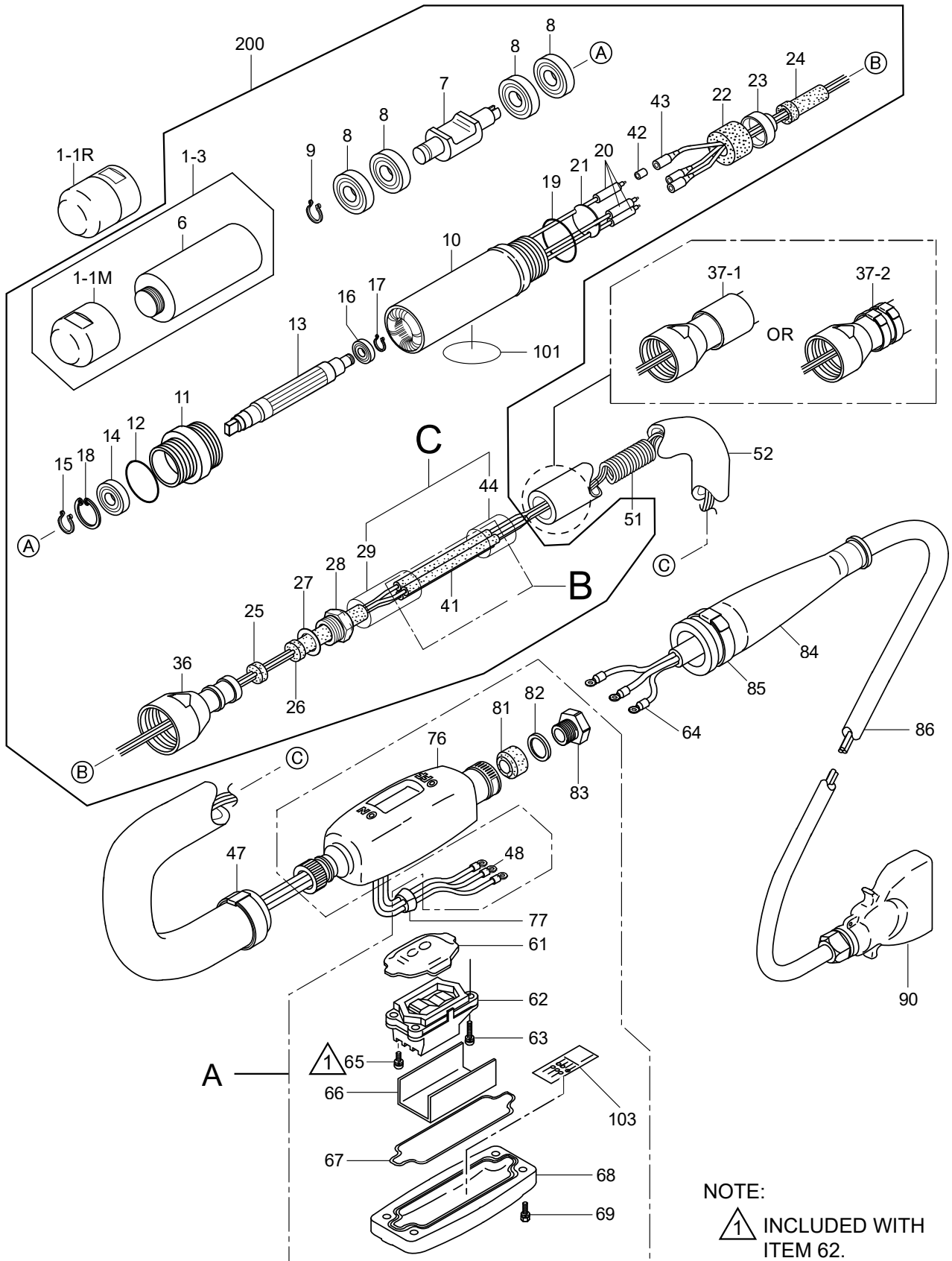
<u>NO.</u>	<u>PART NO.</u>	<u>PART NAME</u>	<u>QTY.</u>	<u>REMARKS</u>
51	122010060	CLAMP, JS 245	1	
52\$	111213680	SWITCH BOX	1	
53\$	111457231	PUSH COVER	1	
54\$	111343571	SWITCH ASSY.....	1	INCLUDES ITEMS W/%
55\$	091605025	SCREW, 5 X 25 W/LOCK/FLAT WASHER	4	
56	111013930	TERMINAL TMEX3.5-5S	6	
57\$	111457110	CORD BUSH, TAPER, SWITCH BOX	1	
58%\$	094010033	SCREW 5 X 10 LOCK WASHER (S)	6	
59\$	111437890	INSULATING PAPER	1	
60\$	111449120	SEAL RING	1	
61\$	111213700	COVER, SWITCH BOX	1	
62\$	002200620	BOLT 6 X 20 LOCK, WASHER	4	
63\$	111435820	PRESSURE RUBBER, SWITCH BOX	1	
64\$	111435810	SLIP WASHER 16-24-1T	1	
65\$	111437760	NUT, SWITCH BOX	1	
66	111335420	CORD PROTECTOR, SWITCH BOX	1	
67	121010210	CLAMP, JS 253	1	
68	959024023	CABTYRE CORD, 3.5 X 3 X 15M	1	
68	959024090	CABTYRE CORD, 3.5 (UNIT/M).....	1	1 PC = 1 M
69	111013622	PLUG ASSY. (MALE) GRAY	1	
69	111013542	PLUG ASSY. (MALE) GREEN	1	REPLACES P/N 111013731
81	920105870	DECAL: MODEL 50	1	
83\$	920112340	DECAL: SERIAL NO.	1	
100	111912131	VIBRATOR HEAD ASSY.....	1	INCLUDES ITEMS W/@



FX60E6 ASSY.

<u>NO.</u>	<u>PART NO.</u>	<u>PART NAME</u>	<u>QTY.</u>	<u>REMARK</u>
A	111931101	SWITCH BOX ASSY.	1.....	INCLUDES ITEMS W/\$
B	111931250	RUBBER TUBE SET, D4.5	1.....	3 PCS = 1 SET INCLUDES ITEMS W/+
C	111931270	CONTRACTION TUBE SET	1.....	INCLUDES ITEMS W/& CUT FOR NEEDED LENGTH
1-1M#*	111456890	METAL HEAD CAP	1	
1-1R	111457180	RUBBER HEAD CAP	1	
1-3*	111931190	VIBRATION CASE W/HEAD	1.....	INCLUDES ITEMS W/#
6#*	111343580	VIBRATION CASE	1	
7*	111324040	ECCENTRIC ROTATOR	1	
8*	044606205	BEARING, 6205VVSGR	4	
9*	080200250	STOP RING, S-25	1	
10*	111343820	MOTOR CASE W/STATOR	1	
11*	111434140	CASE JOINTER	1	
12*	050200480	O-RING, P-48	1	
13*	111331400	ROTOR	1	
14*	042506203	BEARING, 6203ZZSG	1	
15*	080200170	STOP RING, S-17	1	
16*	042506000	BEARING, 6000ZZSG	1	
17*	080200100	STOP RING, S-10	1	
18*	080100400	STOP RING, R-40	1	
19*	050200480	O-RING, P-48	1	
20*	959021422	TUBE, 4D-5D-20L	3	
21*	111428960	SEAT	1	
22*	111449290	CORD HOLDER	1	
23*	111448470	HOLDER	1	
24*	111448400	PROTECT TUBE	1	
25*	111457070	CORD BUSH, D15-3.8	1	
26*	111457090	CORD PROTECTOR (LEAD)	1	
27*	121437551	SLIP WASHER	1	
28*	111461350	NUT, CORD PROTECTOR	1	
29&*	959027101	CONTRACTION TUBE, 3/4"-60	1	
36*	111448440	HOSE COUPLING	1	
37-1	111435220	HOSE CLAMP	1	
37-2	111010220	CLAMP, AB2050	2	
37-2	122010060	CLAMP, JS 245	2	
41+*	959026829	RUBBER TUBE, D4.5-1M	1.....	1 PC = 1 M
42*	111012270	TERMINAL SLEEVE, P-5.5	3	
43*	111012280	TERMINAL CAP, 43932-F	3	
44&*	959027029	CONTRACTION TUBE, D14-1M	1.....	1 PC = 1 M
47	122010060	CLAMP, JS 245	1	
48	111010130	TERMINAL, 3.5-4	3	

FX60E6 ASSY. (CONT'D)



FX60E6 ASSY. (CONT'D.)

<u>NO.</u>	<u>PART NO.</u>	<u>PART NAME</u>	<u>QTY.</u>	<u>REMARKS</u>
51*	111347693	CURLY CORD (3 SQ. MM)	1	
52	959023610	RUBBER TUBE, 37.5D	1	
61\$	111457231	PUSH COVER	1	
62\$	111343571	SWITCH ASSY.....	1	INCLUDES ITEMS W/%
63\$	091605025	SCREW, 5 X 25 W/LOCK/FLAT WASHER	4	
64	111013930	TERMINAL, TMEX3.5-5S	3	
65%\$	094010033	SCREW, 5 X 10 LOCK WASHER (S)	6	
66\$	111437890	INSULATING PAPER	1	
67\$	111449120	SEAL RING	1	
68\$	111213700	COVER, SWITCH BOX	1	
69\$	002200620	BOLT 6 X 20 W/LOCK WASHER	4	
76\$	111213680	SWITCH BOX	1	
77\$	111457110	CORD BUSH, TAPER/SWITCH BOX	1	
81\$	111435820	PRESSURE RUBBER, SWITCH BOX	1	
82\$	111435810	SLIP WASHER 16-24-1T	2	
83\$	111437760	NUT, (16D) SWITCH BOX	1	
84	111335420	CORD PROTECTOR, SWITCH BOX	1	
85	122010210	CLAMP, JS 253	1	
86	959024090	CABTYRE CORD, 3.5	1	
90	111013622	PLUG ASSY. (MALE) GRAY	1	
90	111013542	PLUG ASSY. (MALE) GREEN	1	REPLACES P/N 111013731
101*	920100600	DECAL: M-MARK 54D	1	
103\$	920111390	DECAL: SERIAL NO.	1	
200	111912081	VIBRATOR HEAD ASSY.....	1	INCLUDES ITEMS W/*

PARTS MANUAL

HERE'S HOW TO GET HELP

PLEASE HAVE THE MODEL AND SERIAL
NUMBER ON-HAND WHEN CALLING

UNITED STATES

Multiquip Inc.

(310) 537- 3700
6141 Katella Avenue Suite 200
Cypress, CA 90630
E-MAIL: mq@multiquip.com
WEBSITE: www.multiquip.com

CANADA

Multiquip

(450) 625-2244
4110 Industriel Boul.
Laval, Quebec, Canada H7L 6V3
E-MAIL: infocanada@multiquip.com

UNITED KINGDOM

Multiquip (UK) Limited Head Office

0161 339 2223
Unit 2, Northpoint Industrial Estate,
Globe Lane,
Dukinfield, Cheshire SK16 4UJ
E-MAIL: sales@multiquip.co.uk

© COPYRIGHT 2021, MULTIQUIP INC.

Multiquip Inc, the MQ logo and the Mikasa logo are registered trademarks of Multiquip Inc. and may not be used, reproduced, or altered without written permission. All other trademarks are the property of their respective owners and used with permission.

This manual MUST accompany the equipment at all times. This manual is considered a permanent part of the equipment and should remain with the unit if resold.

The information and specifications included in this publication were in effect at the time of approval for printing. Illustrations, descriptions, references and technical data contained in this manual are for guidance only and may not be considered as binding. Multiquip Inc. reserves the right to discontinue or change specifications, design or the information published in this publication at any time without notice and without incurring any obligations.

Your Local Dealer is:

