

PARTS MANUAL



GloBug
MODEL GB43LED
LIGHTING SYSTEM
SERIAL NO. G4100154 AND ABOVE

Revision #4 (10/26/23)

To find the latest revision of this publication or associated operation manual, visit our website at: www.multiquip.com



THIS MANUAL MUST ACCOMPANY THE EQUIPMENT AT ALL TIMES.

TABLE OF CONTENTS

GB43LED Lighting System

Explanation Of Code In Remarks Column..... 4
Suggested Spare Parts 5

Component Drawings

Nameplate And Decals 6–7
Base Plate Assembly 8–9
LED Lamp Assy. (S/N G4100153 And Below).... 10–11
LED Lamp Assy. (S/N G4100154 And Above)... 12–13
Front Cover Assembly (With Fan) 14–15
Front Cover Assembly (With Out Fan)..... 16–17
Cable And Switch Assembly 18–19
Main Mast Assembly..... 20–21
T-Handle Assembly..... 22–23
Steering Assembly 24–25
Outrigger Assembly 26–27
Mast Adapter Assembly 28–29
Mast Section Assembly 30–31

NOTICE
Specifications and part numbers are subject to change without notice.

EXPLANATION OF CODE IN REMARKS COLUMN

The following section explains the different symbols and remarks used in the Parts section of this manual. Use the help numbers found on the back page of the manual if there are any questions.

NOTICE

The contents and part numbers listed in the parts section are subject to change without notice. Multiquip does not guarantee the availability of the parts listed.

SAMPLE PARTS LIST

| NO. | PART NO. | PART NAME | QTY. | REMARKS |
|-----|----------|----------------------|------|---------------------|
| 1 | 12345 | BOLT | 1 | INCLUDES ITEMS W/% |
| 2% | | WASHER, 1/4 IN. | | NOT SOLD SEPARATELY |
| 2% | 12347 | WASHER, 3/8 IN. ... | 1 | MQ-45T ONLY |
| 3 | 12348 | HOSE | A/R | MAKE LOCALLY |
| 4 | 12349 | BEARING | 1 | S/N 2345B AND ABOVE |

NO. Column

Unique Symbols — All items with same unique symbol (@, #, +, %, or >) in the number column belong to the same assembly or kit, which is indicated by a note in the “Remarks” column.

Duplicate Item Numbers — Duplicate numbers indicate multiple part numbers, which are in effect for the same general item, such as different size saw blade guards in use or a part that has been updated on newer versions of the same machine.

NOTICE

When ordering a part that has more than one item number listed, check the remarks column for help in determining the proper part to order.

PART NO. Column

Numbers Used — Part numbers can be indicated by a number, a blank entry, or TBD.

TBD (To Be Determined) is generally used to show a part that has not been assigned a formal part number at the time of publication.

A blank entry generally indicates that the item is not sold separately or is not sold by Multiquip. Other entries will be clarified in the “Remarks” Column.

QTY. Column

Numbers Used — Item quantity can be indicated by a number, a blank entry, or A/R.

A/R (As Required) is generally used for hoses or other parts that are sold in bulk and cut to length.

A blank entry generally indicates that the item is not sold separately. Other entries will be clarified in the “Remarks” Column.

REMARKS Column

Some of the most common notes found in the “Remarks” Column are listed below. Other additional notes needed to describe the item can also be shown.

Assembly/Kit — All items on the parts list with the same unique symbol will be included when this item is purchased.

Indicated by:

“INCLUDES ITEMS W/(unique symbol)”

Serial Number Break — Used to list an effective serial number range where a particular part is used.

Indicated by:

“S/N XXXXX AND BELOW”

“S/N XXXX AND ABOVE”

“S/N XXXX TO S/N XXX”

Specific Model Number Use — Indicates that the part is used only with the specific model number or model number variant listed. It can also be used to show a part is NOT used on a specific model or model number variant.

Indicated by:

“XXXXX ONLY”

“NOT USED ON XXXX”

“Make/Obtain Locally” — Indicates that the part can be purchased at any hardware shop or made out of available items. Examples include battery cables, shims, and certain washers and nuts.

“Not Sold Separately” — Indicates that an item cannot be purchased as a separate item and is either part of an assembly/kit that can be purchased, or is not available for sale through Multiquip.

SUGGESTED SPARE PARTS

GB43LED LIGHTING SYSTEM

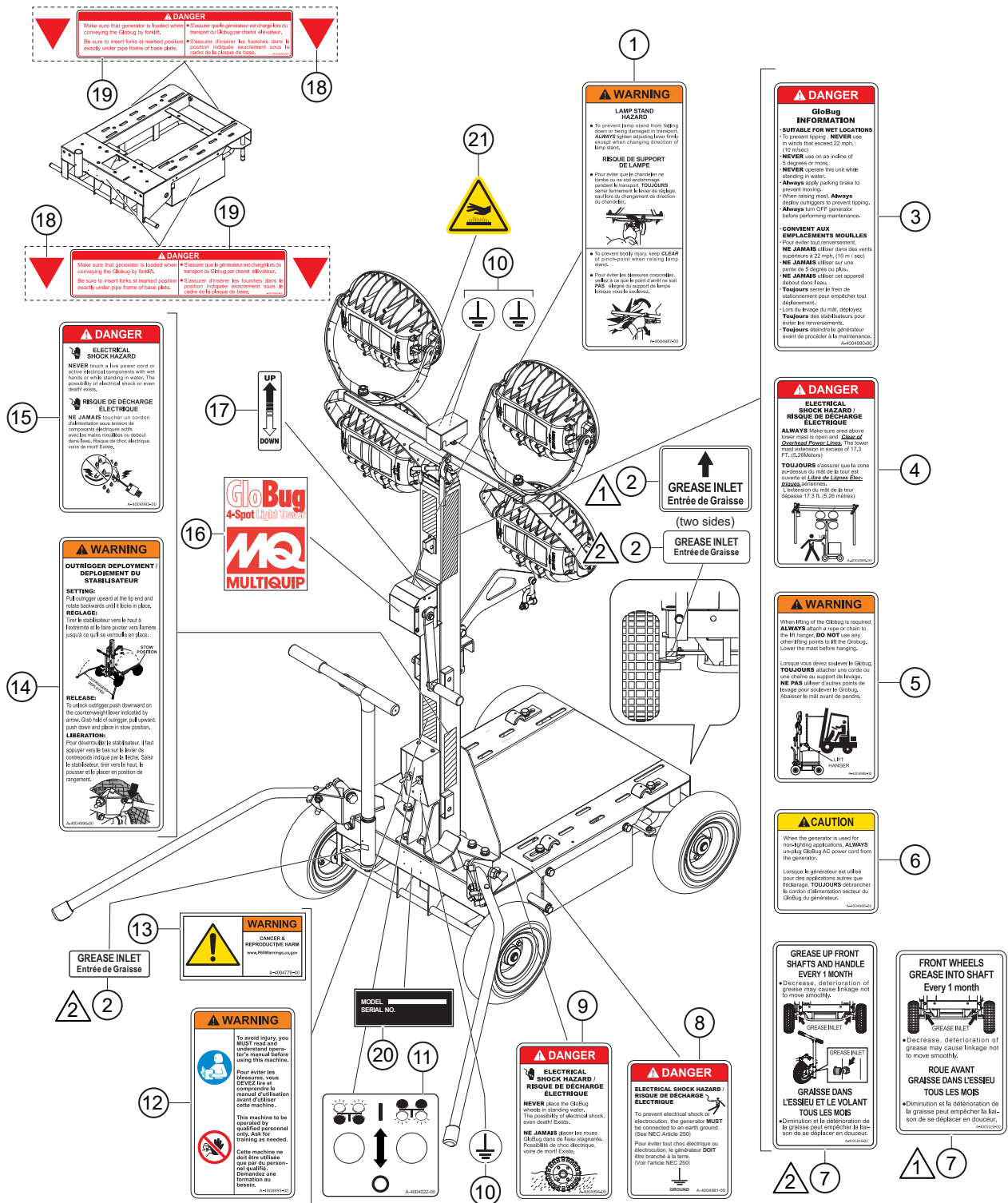
1 to 3 units

| Qty. | P/N | Description |
|--------|------------------|-------------------------------------------------|
| 3..... | A000094800 | LAMP UNIT ASSY., RIGHT (S/N G4100153 AND BELOW) |
| 3..... | A000120400 | LAMP UNIT ASSY., RIGHT (S/N G4100154 AND ABOVE) |
| 3..... | A000094700 | LAMP UNIT ASSY., LEFT (S/N G4100153 AND BELOW) |
| 3..... | A000120300 | LAMP UNIT ASSY., LEFT (S/N G4100154 AND ABOVE) |
| 1..... | A000060602 | FRONT COVER ASSY., (S/N G4100153 AND BELOW) |
| 1..... | A100181300 | LENS COVER, (S/N G4100154 AND ABOVE) |

NOTICE

Part numbers on this Suggested Spare Parts list may supersede/replace the part numbers shown in the following parts lists.

NAMEPLATE AND DECALS

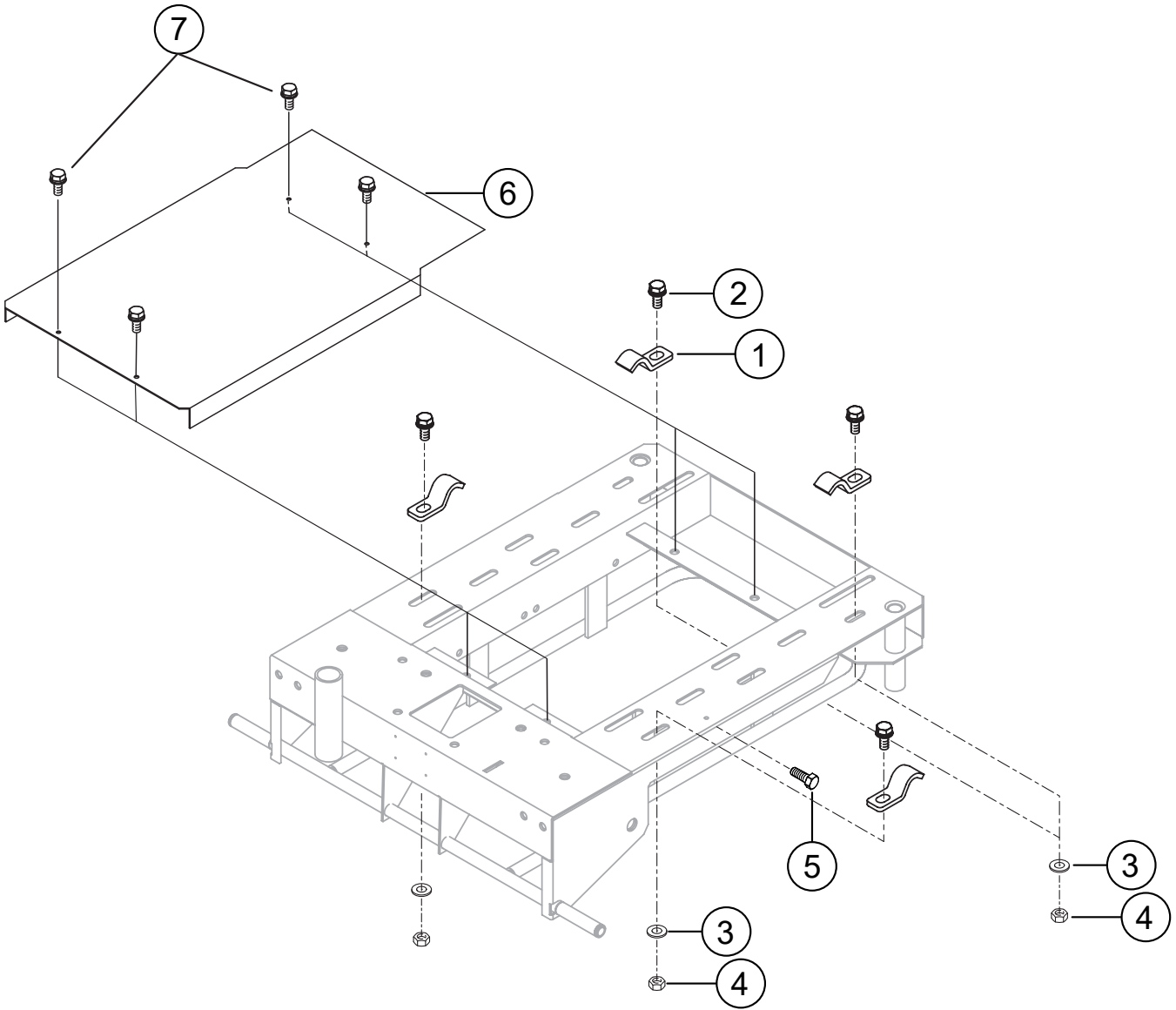


- NOTES:**
- 1 FOR SERIAL G4100153 AND BELOW.
 - 2 FOR SERIAL G4100154 AND ABOVE.

NAMEPLATE AND DECALS

| <u>NO.</u> | <u>PART NO.</u> | <u>PART NAME</u> | <u>QTY.</u> | <u>REMARKS</u> |
|------------|-----------------|----------------------------------------------|-------------|---------------------------|
| 1 | A400498700 | DECAL; WARNING, LAMP STAND HAZARD, CSA | 1 | |
| 2 | A400501900 | DECAL; GREASE INLET, CSA..... | 2..... | S/N G4100153 AND BELOW |
| 2 | A400501901 | DECAL; GREASE INLET..... | 3..... | S/N G4100154 AND ABOVE |
| 3 | A400499000 | DECAL; DANGER, GLOBUG INFORMATION, CSA | 1 | |
| 4 | A400498900 | DECAL; DANGER ELECTRIC SHOCK (GLOBUG), CSA | 1 | |
| 5 | A400498800 | DECAL; WARNING, LIFT HANGER, CSA | 1 | |
| 6 | A400261700 | DECAL; CAUTION, REMOVE POWER CORD, CSA | 1 | |
| 7 | A400502000 | DECAL; FRONT WHEELS GREASE INTO SHAFT, CSA | 1 | |
| 7 | A400584600 | DECAL; FRONT WHEELS GREASE INTO SHAFT..... | 1..... | S/N G4100154 AND ABOVE |
| 8 | A400499100 | DECAL; DANGER, ELECTRICAL SHOCK (GND), CSA | 1 | |
| 9 | A400499400 | DECAL; DANGER, ELECTRICAL SHOCK (TIRES), CSA | 1 | |
| 10 | A400372800 | DECAL; GROUND, Ø10 WHITE | 3 | |
| 11 | A400402200 | DECAL; LIGHT SWITCH ON/OFF | 1 | |
| 12 | A400499500 | DECAL; WARNING, READ MANUAL, CSA | 1 | |
| 13 | A400477900 | DECAL; WARNING, PROPOSITION 65 | 1 | |
| 14 | A400499600 | DECAL; WARNING, OUTRIGGER DEPLOYMENT, CSA | 1 | |
| 15 | A400499300 | DECAL; DANGER, ELECTRICAL SHOCK (CORDS), CSA | 1 | |
| 16 | A400480600 | DECAL; MQ LOGO | 1 | |
| 17 | A400262700 | DECAL; WINCH UP/DOWN | 1 | |
| 18 | A400111200 | DECAL; TRIANGLE | 8 | |
| 19 | A400499200 | DECAL; DANGER, INSERT FORKLIFT, CSA | 4 | |
| 20 | | NAMEPLATE..... | 1..... | CONTACT MQ PARTS DEPT. |
| 21 | A400492200 | DECAL; BURN HAZARD..... | 8..... | S/N G4100154 AND ABOVE |

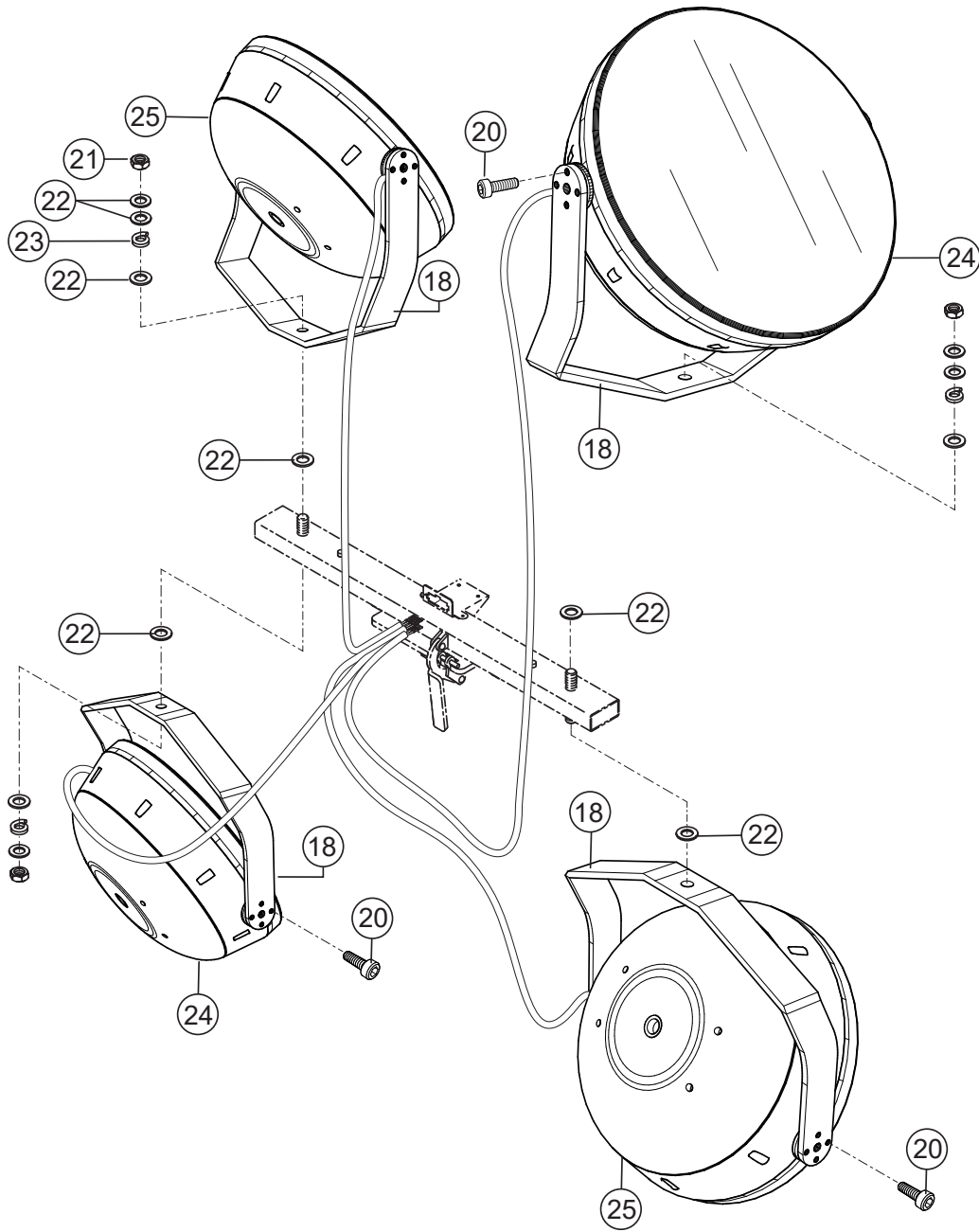
BASE PLATE ASSY.



BASE PLATE ASSY.

| <u>NO.</u> | <u>PART NO.</u> | <u>PART NAME</u> | <u>QTY.</u> | <u>REMARKS</u> |
|------------|-----------------|-------------------------|-------------|----------------|
| 1 | A400166400 | LOCKING CLAMP | 4 | |
| 2 | 0013512025 | BOLT AND WASHER, M12X25 | 4 | |
| 3 | 0043112000 | WASHER, M12 | 4 | |
| 4 | 0033112000 | NUT, M12 | 4 | |
| 5 | 0013106010 | BOLT, M6X10 | 1 | |
| 6 | A100147100 | PLATE, BALLAST | 1 | |
| 7 | 0013510025 | BOLT AND WASHER, M10X25 | 4 | |

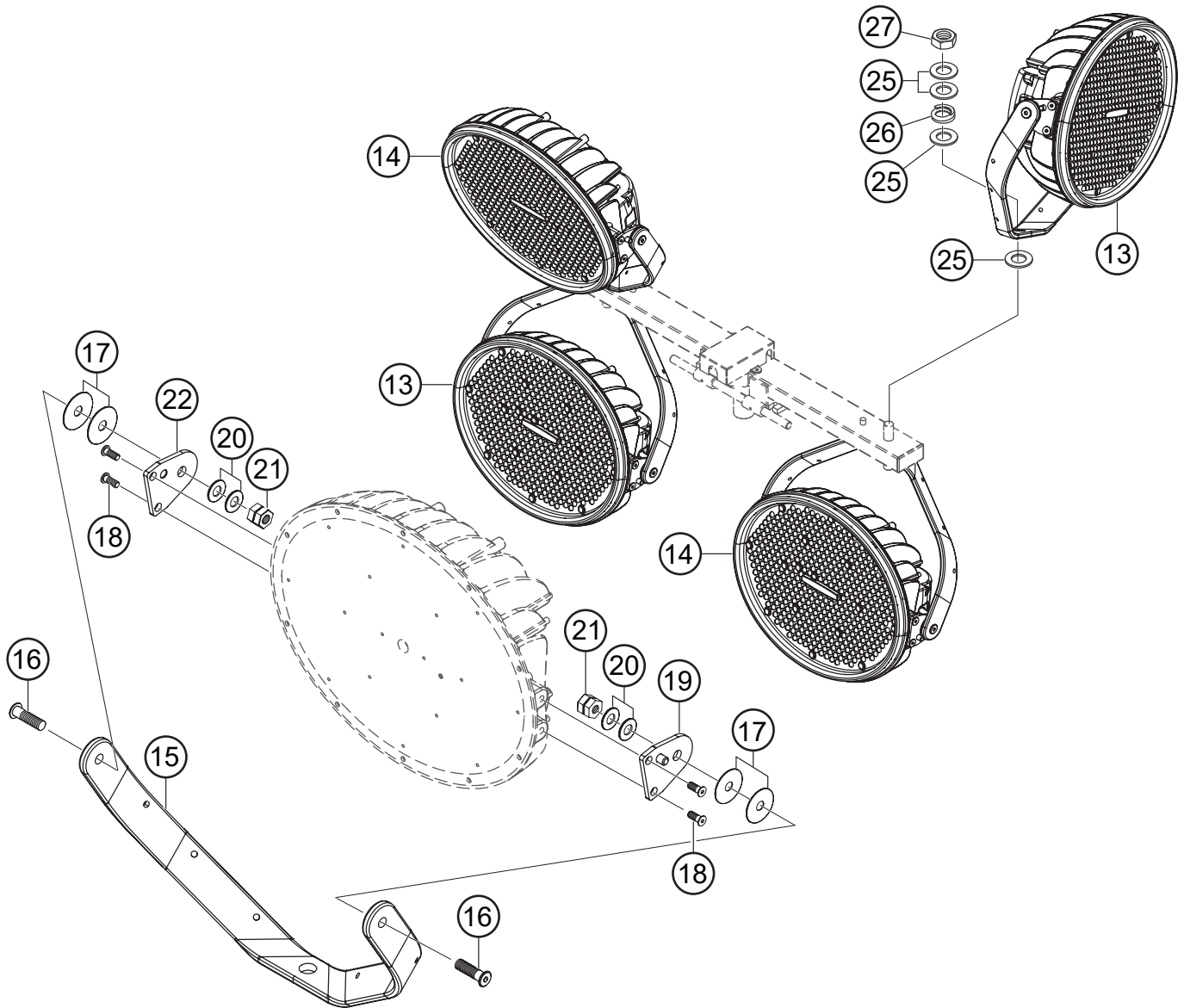
LED LAMP ASSY. (S/N G4100153 AND BELOW)



LED LAMP ASSY. (S/N G4100153 AND BELOW)

| <u>NO.</u> | <u>PART NO.</u> | <u>PART NAME</u> | <u>QTY.</u> | <u>REMARKS</u> |
|------------|-----------------|------------------------|-------------|------------------------|
| 18 | A100117002 | LAMP BRACKET | 4..... | S/N G4100107 AND ABOVE |
| 20 | 0017105010 | HEX. HEAD BOLT, M5X10 | 32 | |
| 21 | 0034116000 | NUT, M16 | 4 | |
| 22 | E000144001 | WASHER, M16 | 16 | |
| 23 | 1042000230 | SPRING, LAMP | 4 | |
| 24 | A000094800 | LAMP UNIT ASSY., RIGHT | 2 | |
| 25 | A000094700 | LAMP UNIT ASSY., LEFT | 2 | |

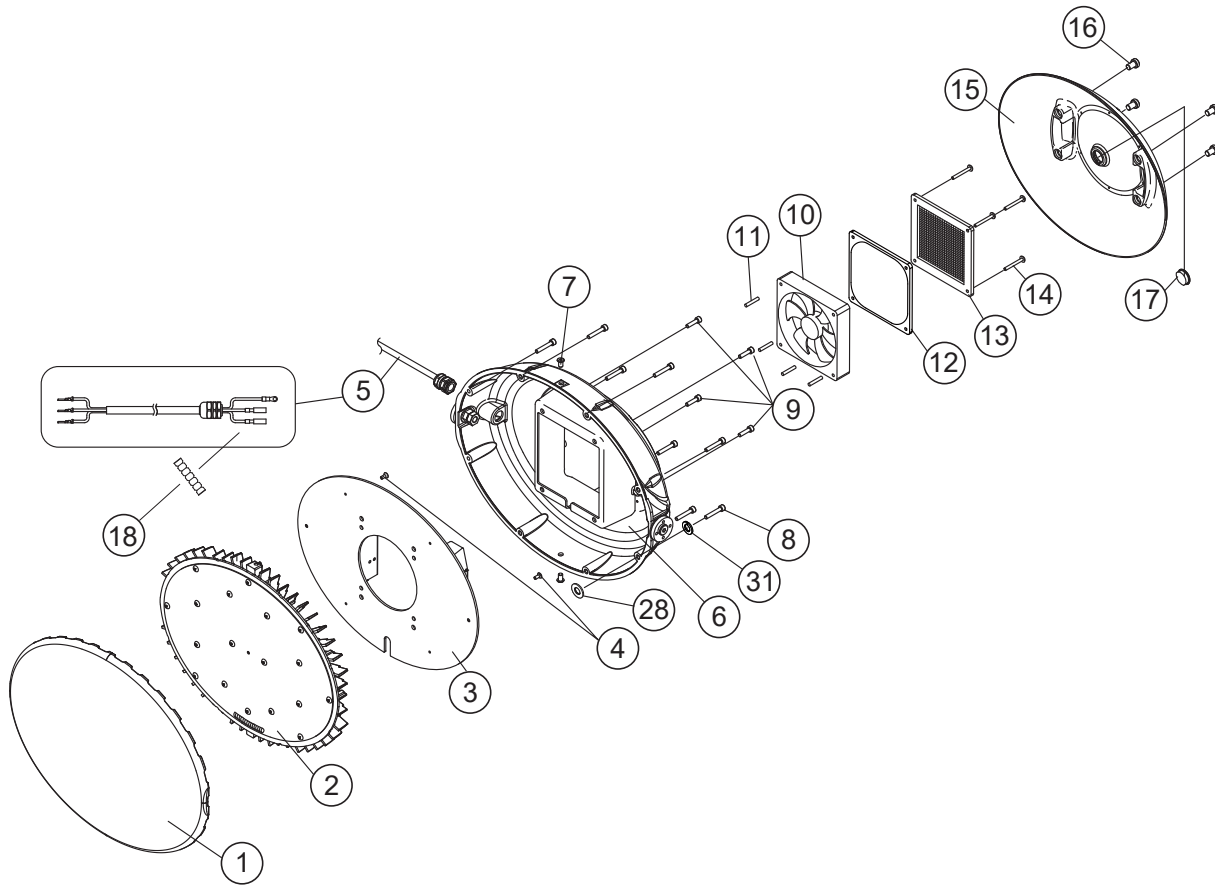
LED LAMP ASSY. (S/N G4100154 AND ABOVE)



LED LAMP ASSY. (S/N G4100154 AND ABOVE)

| <u>NO.</u> | <u>PART NO.</u> | <u>PART NAME</u> | <u>QTY.</u> | <u>REMARKS</u> |
|------------|-----------------|-------------------------|-------------|----------------|
| 13 | A000120300 | LAMP UNIT ASSY., LEFT | 2 | |
| 14 | A000120400 | LAMP UNIT ASSY., RIGHT | 2 | |
| 15 | A100190000 | LAMP BRACKET | 4 | |
| 16 | 0017510035 | SLIM HEAD SCREW, M10X35 | 8 | |
| 17 | A400517900 | WASHER, ϕ 38 | 16 | |
| 18 | 0017508020 | SLIM HEAD SCREW, M8X20 | 16 | |
| 19 | A300459000 | BRACKET, LEFT | 4 | |
| 20 | A400418100 | WASHER, M10 | 16 | |
| 21 | 0036410000 | HARD LOCK NUT, M10 | 8 | |
| 22 | A300459100 | BRACKET, RIGHT | 4 | |
| 25 | E000144001 | WASHER, M16 | 16 | |
| 26 | 1042000230 | SPRING, LAMP | 4 | |
| 27 | 0034116000 | NUT, M16 | 4 | |

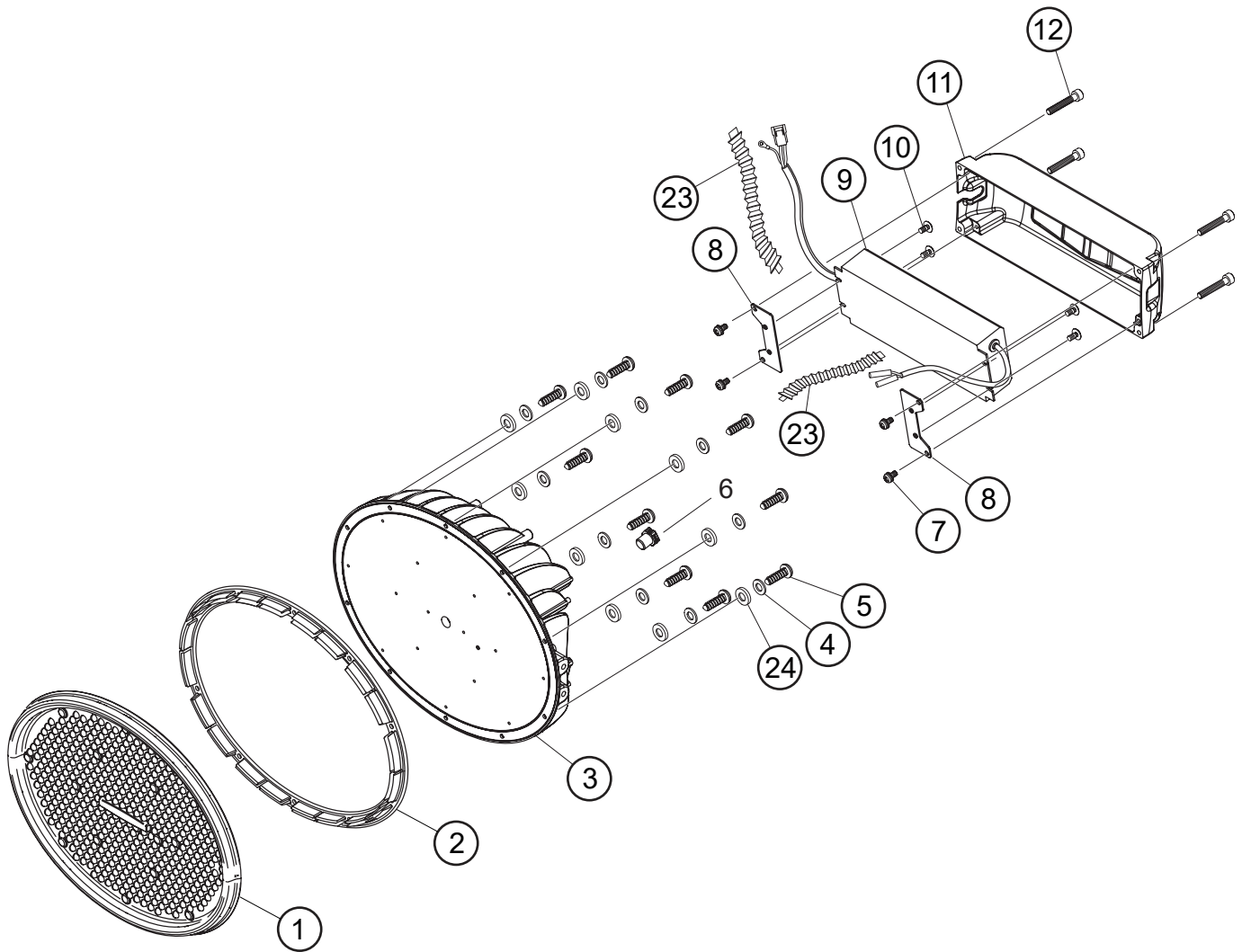
FRONT COVER ASSY. (WITH FAN)



FRONT COVER ASSY. (WITH FAN)

| <u>NO.</u> | <u>PART NO.</u> | <u>PART NAME</u> | <u>QTY.</u> | <u>REMARKS</u> |
|------------|-----------------|----------------------------------|-------------|------------------------|
| 1 | A000060602 | FRONT COVER ASSY. | 4 | |
| 2 | A000060702 | HEAT SINK ASSY. | 4 | |
| 3 | A000095100 | POWER UNIT ASSY. | 4 | |
| 4 | 0025004010 | COUNTERSUNK SCREW M4X10 | 8 | |
| 5 | A300403202 | CABLE (4-SPOT) COMPLETE | 4 | |
| 6 | A100110601 | ARM BRACKET | 4 | |
| 7 | 0017206010 | BOLT, SOCKET HEAD SUS M6X10 | 8 | |
| 8 | 0026405030 | SCREW, M5X30 | 32 | |
| 9 | 0017006016 | BOLT, SOCKET HEAD, M6X16 | 16 | |
| 10 | A300328800 | FAN | 4 | |
| 11 | E000222500 | SPACER | 16 | |
| 12 | A400400502 | PLATE, FAN | 4 | |
| 13 | E000134400 | FAN GUARD | 4 | |
| 14 | 0024304035 | SCREW, TRUSS HEAD | 16 | |
| 15 | A100116000 | SPOT LAMP BACK COVER, RED | 4 | S/N G4100106 AND BELOW |
| 15 | A100110500 | SPOT LAMP BACK COVER, GREY | 4 | S/N G4100107 AND ABOVE |
| 16 | 0018108012 | BOLT, SOCKET HEAD SUS M8X12 | 16 | |
| 17 | E000148500 | CAP | 4 | |
| 18 | A400417800 | TUBE COVER | 4 | |
| 28 | A400470900 | WASHER, COVER M13 | 32 | |
| 31 | 0046005000 | WASHER, LOCK M5 | 32 | |

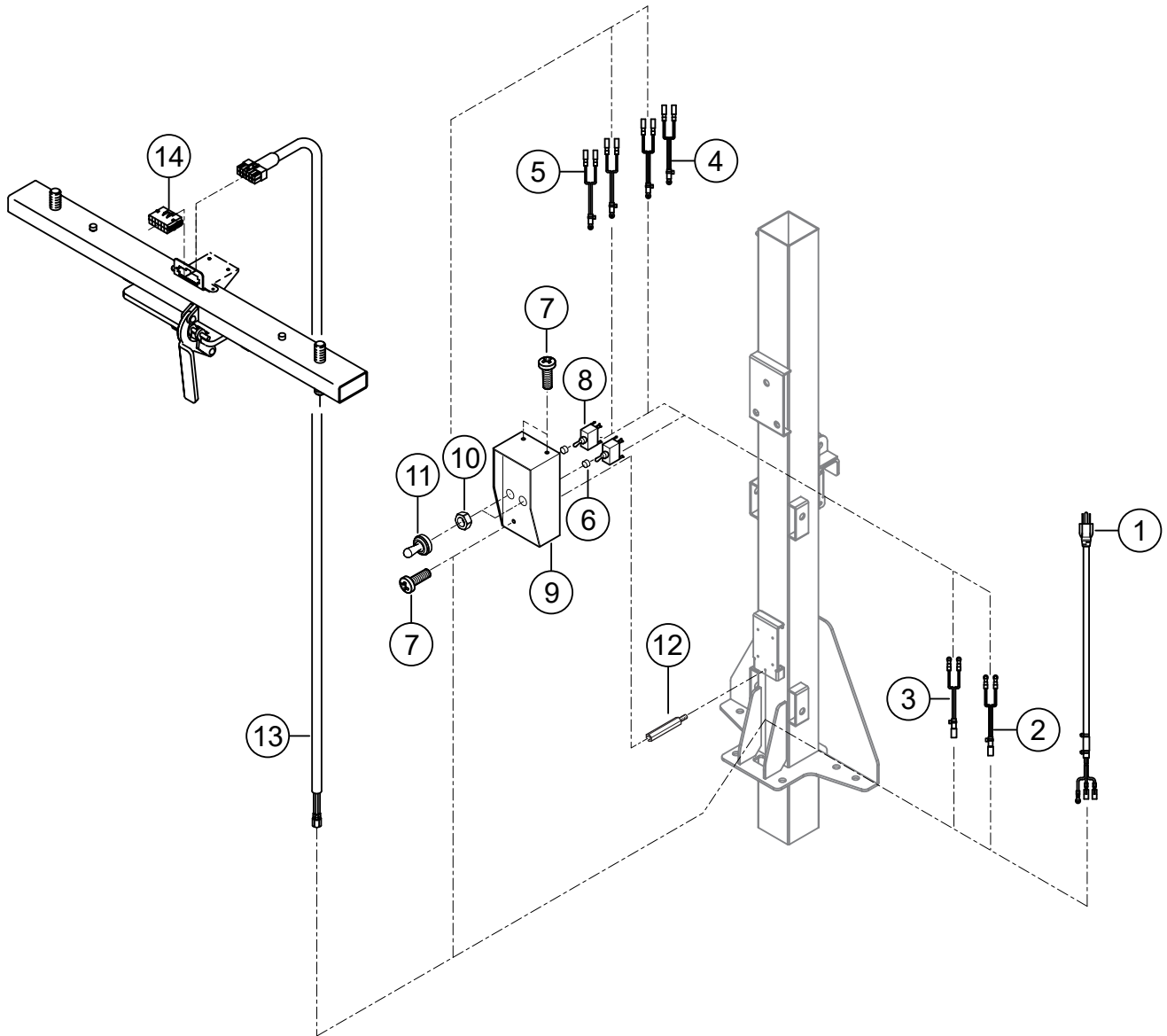
FRONT COVER ASSY. (WITH OUT FAN)



FRONT COVER ASSY. (WITH OUT FAN)

| <u>NO.</u> | <u>PART NO.</u> | <u>PART NAME</u> | <u>QTY.</u> | <u>REMARKS</u> |
|------------|-----------------|------------------------------|-------------|----------------|
| 1 | A100181300 | LENS COVER | 4 | |
| 2 | A200291200 | GASKET | 4 | |
| 3 | A000110300 | HEAT SINK ASSY. | 4 | |
| 4 | 0044105000 | WASHER, M5 | 40 | |
| 5 | 0027505020 | TAPPING SCREW, M5X20 | 40 | |
| 6 | E000119700 | VENT FILTER | 4 | |
| 7 | 0027405012 | SCREW W/ WASHER, M5X12 | 16 | |
| 8 | A400553800 | PLATE, POWER SUPPLY | 8 | |
| 9 | A200196600 | POWER SUPPLY ASSY. | 4 | |
| 10 | 0022404008 | TRUSS HEAD SCREW, M4X8 | 16 | |
| 11 | A100181500 | CASE, POWER SUPPLY | 4 | |
| 12 | 0017405030 | HEX. SOCKET HEAD BOLT, M5X30 | 16 | |
| 23 | A400573501 | CORRUGATED TUBE (15.75 IN.) | 8 | |
| 24 | E000282800 | WASHER, SEAL M5 | 40 | |

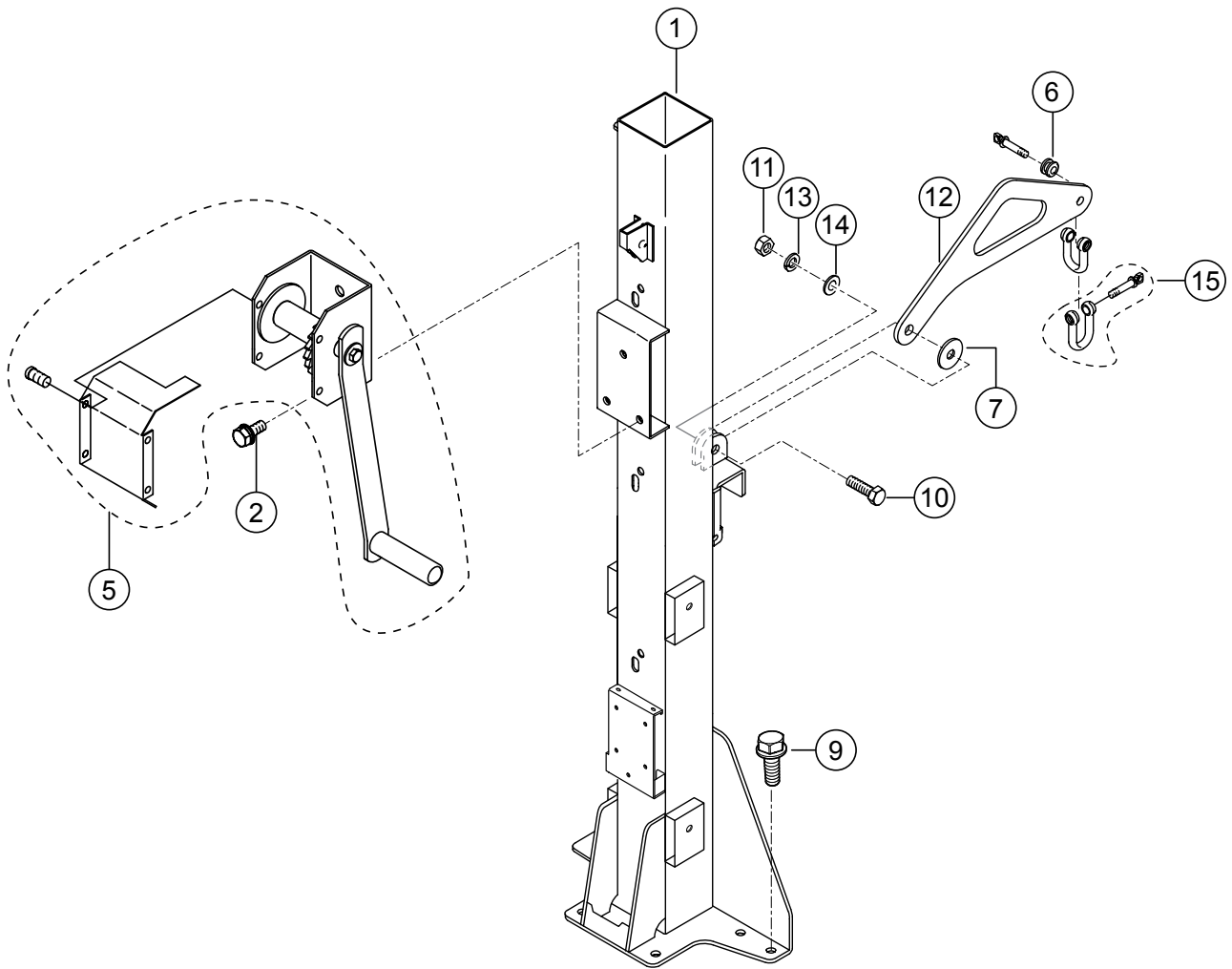
CABLE AND SWITCH ASSY.



CABLE AND SWITCH ASSY.

| <u>NO.</u> | <u>PART NO.</u> | <u>PART NAME</u> | <u>QTY.</u> | <u>REMARKS</u> |
|------------|-----------------|---------------------------------|-------------|------------------------|
| 1 | A300335000 | CABLE (MAIN GB43LED) CP | 1 | |
| 2 | A400401800 | WIRE (JOINT) 3 CP | 1 | |
| 3 | A400401900 | WIRE (JOINT) 4 CP | 1 | |
| 4 | A400402000 | WIRE (JOINT) 5 CP | 2 | |
| 5 | A400402100 | WIRE (JOINT) 6 CP | 2 | |
| 6 | E000153700 | SWITCH, WASHER | 2 | |
| 7 | 0023304012 | BOLT AND WASHER, M4X12 | 3..... | S/N G4100153 AND BELOW |
| 7 | 0028204012 | UPSET BOLT ASSY., SC M4X12..... | 3..... | S/N G4100154 AND ABOVE |
| 8 | E000153400 | SWITCH | 2 | |
| 9 | A300334701 | SWITCH COVER | 1 | |
| 10 | E000153600 | SWITCH NUT | 2 | |
| 11 | E000153500 | SWITCH CAP | 2 | |
| 12 | 2032500430 | BOLT, SUPPORTER | 1 | |
| 13 | A300329700 | WIRE (LAMP) CP | 1..... | S/N G4100153 AND BELOW |
| 13 | A300470300 | WIRE, LAMP | 1..... | S/N G4100154 AND ABOVE |
| 14 | 1407021030 | RECEPTACLE HOUSING | 1..... | S/N G4100153 AND BELOW |

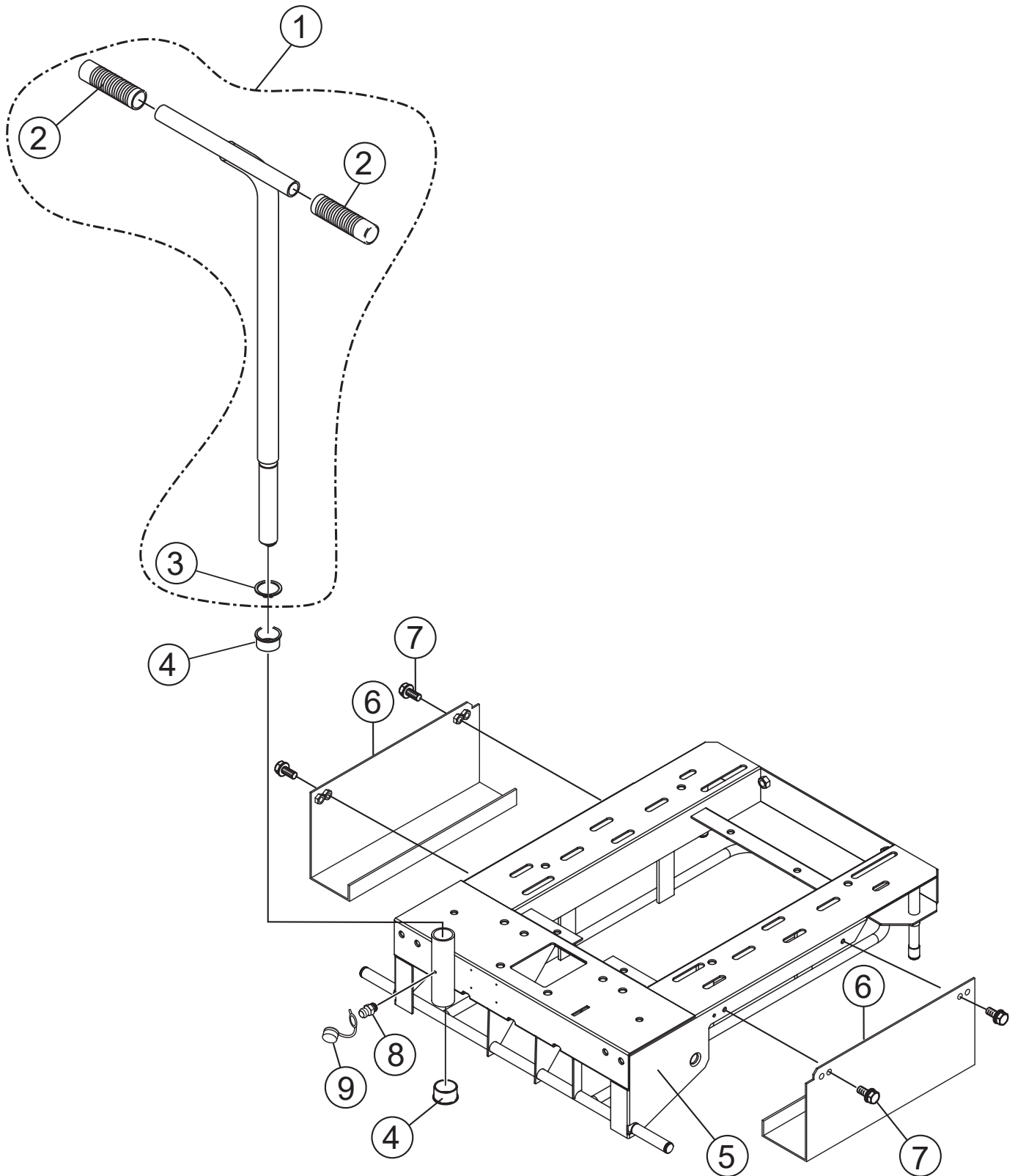
MAIN MAST ASSY.



MAIN MAST ASSY.

| <u>NO.</u> | <u>PART NO.</u> | <u>PART NAME</u> | <u>QTY.</u> | <u>REMARKS</u> |
|------------|-----------------|-------------------------|-------------|----------------|
| 1 | A100028105 | FIRST MAST | 1 | |
| 2 | 0013510025 | BOLT AND WASHER, M10X25 | 3 | |
| 5 | 1011000701 | WINCH HM-G103 | 1 | |
| 6 | A400494100 | GROMMET | 1 | |
| 7 | 0043112041 | WASHER, 12DX40DX3.2 | 1 | |
| 9 | 0013512025 | BOLT AND WASHER, M12X25 | 6 | |
| 10 | 0013112040 | BOLT, M12X40 | 1 | |
| 11 | 0033112000 | NUT, M12 | 1 | |
| 12 | 1052001710 | HANGER | 1 | |
| 13 | 0043212000 | WASHER, LOCK M12 | 1 | |
| 14 | 0043112000 | WASHER, M12 | 1 | |
| 15 | 1711080130 | SHACKLE | 2 | |

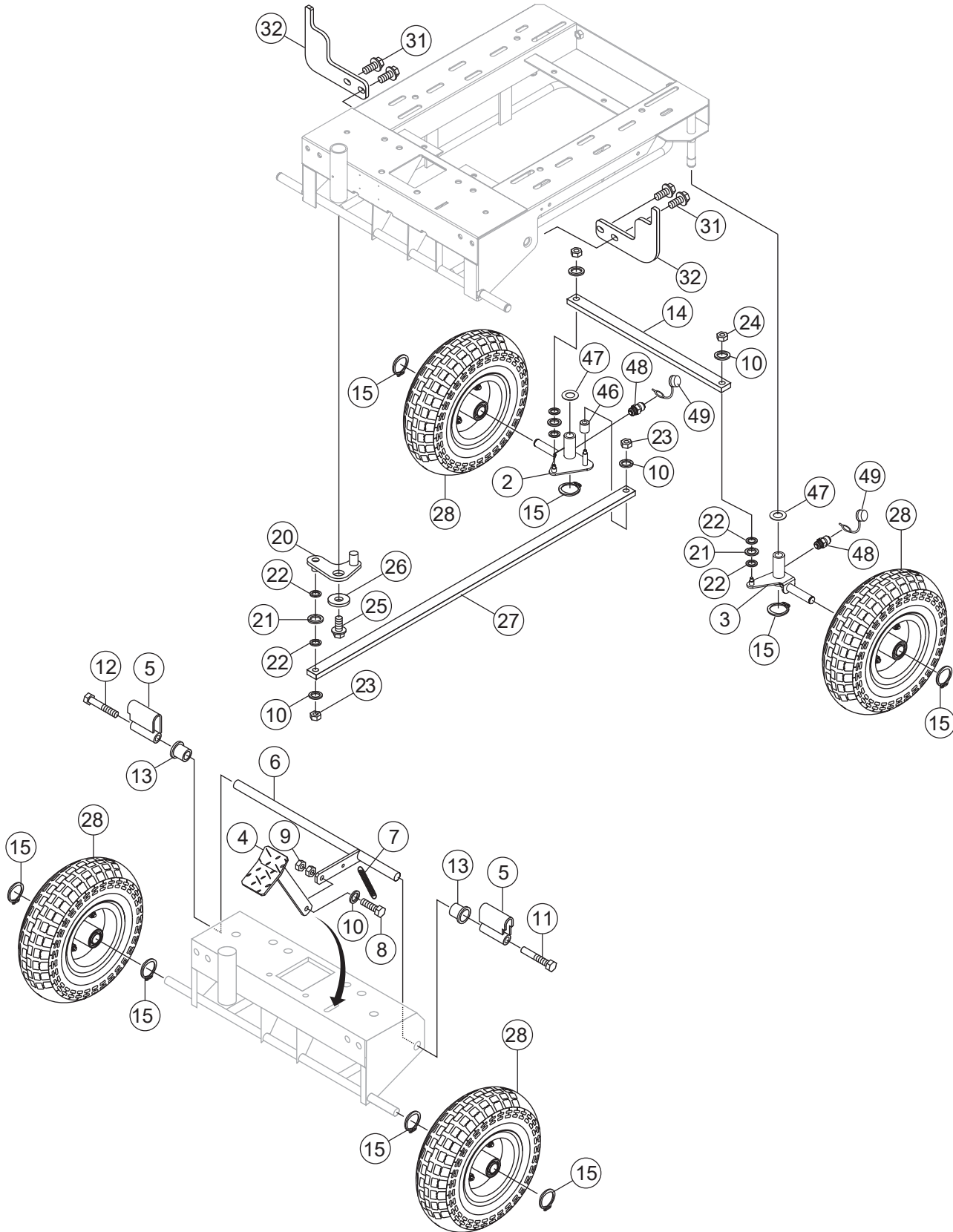
T-HANDLE ASSY.



T-HANDLE ASSY.

| <u>NO.</u> | <u>PART NO.</u> | <u>PART NAME</u> | <u>QTY.</u> | <u>REMARKS</u> |
|------------|-----------------|----------------------------|-------------|-----------------------------------------------|
| 1 | A200023001 | HANDLE | 1..... | INCLUDES ITEMS W/# S/N G4100153 AND BELOW |
| 1 | A200193402 | HANDLE | 1..... | INCLUDES ITEMS W/\$ S/N G4100154 AND ABOVE |
| 2#\$ | 1102700130 | HANDLE GRIP | 2 | |
| 3# | 0040730000 | SNAP RING | 1..... | S/N G4100153 AND BELOW |
| 4 | 1503300130 | SLEEVE BEARING, 30DX34DX20 | 2 | |
| 5 | A100018908 | BASE PLATE | 1..... | S/N G4100153 AND BELOW |
| 5 | A100193802 | BASE PLATE | 1..... | S/N G4100154 AND ABOVE |
| 6 | A300087403 | SIDE GUARD | 2 | |
| 7 | 0013508015 | BOLT AND WASHER, M8X15 | 4 | |
| 8 | E000233200 | GREASE NIPPLE | 1..... | S/N G4100154 AND ABOVE |
| 9 | E000233300 | CAP, GREASE NIPPLE | 1..... | S/N G4100154 AND ABOVE |

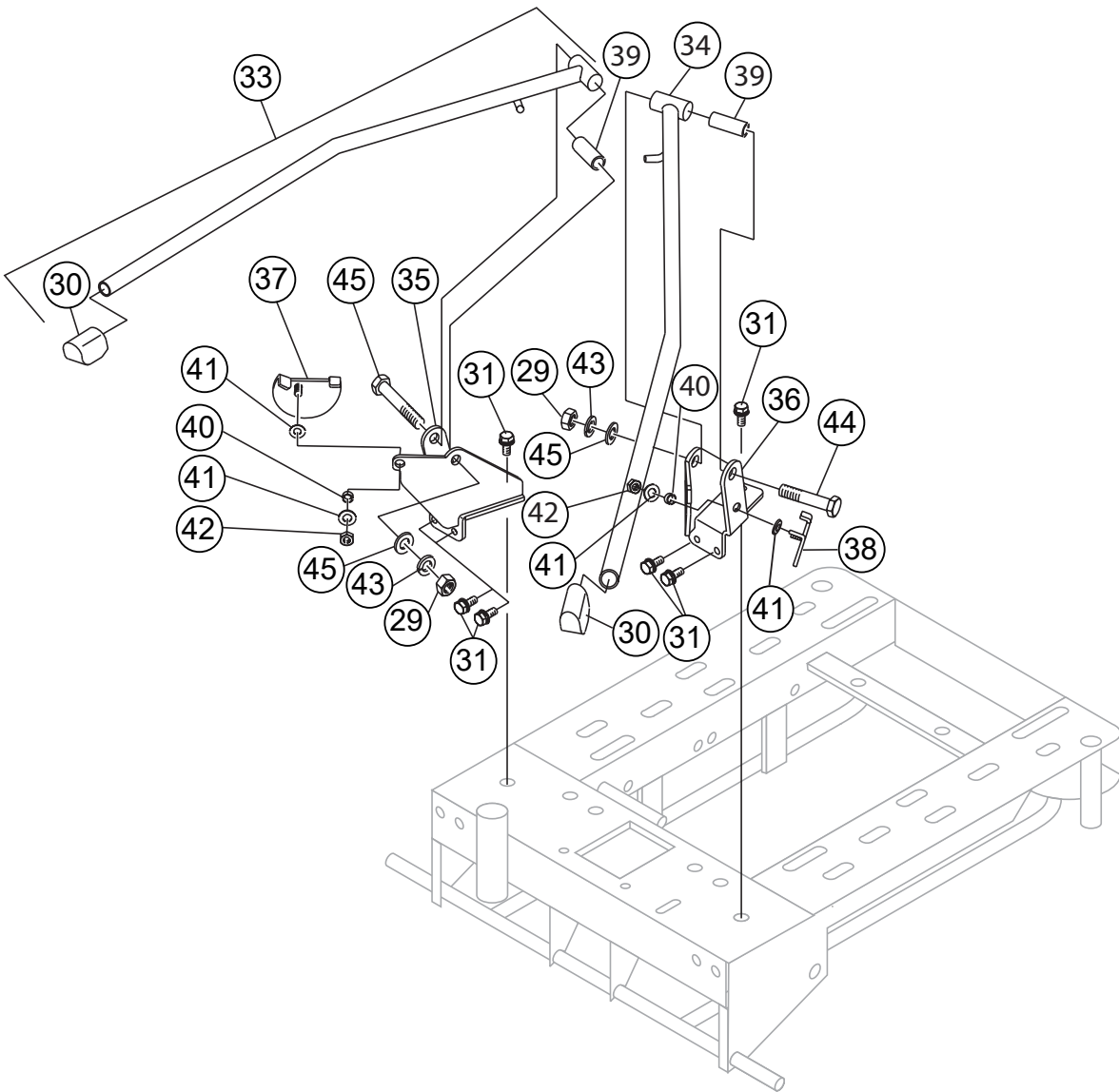
STEERING ASSY.



STEERING ASSY.

| <u>NO.</u> | <u>PART NO.</u> | <u>PART NAME</u> | <u>QTY.</u> | <u>REMARKS</u> |
|------------|-----------------|----------------------------|-------------|-------------------------|
| 2 | A200022904 | FRONT SHAFT (L) | 1..... | S/N G4100153 AND BELOW |
| 2 | A200192701 | FRONT SHAFT (L)..... | 1..... | S/N G4100154 AND ABOVE |
| 3 | A200022804 | FRONT SHAFT (R) | 1..... | S/N G4100153 AND BELOW |
| 3 | A200192801 | FRONT SHAFT (R)..... | 1..... | S/N G4100154 AND ABOVE |
| 4 | 2001200313 | BRAKE PEDAL | 1 | |
| 5 | 2071214010 | BRAKE | 2 | |
| 6 | 2071213211 | BRAKE SHAFT | 1 | |
| 7 | 1041000131 | SPRING, BRAKE | 1 | |
| 8 | 011208030 | BOLT, M8X30 SUS | 1..... | REPLACES P/N 0010308030 |
| 9 | 0033108000 | NUT, M8 | 2 | |
| 10 | 0043108000 | WASHER, M8 | 5 | |
| 11 | 0013212075 | BOLT, M12X75 | 1 | |
| 12 | 1521120131 | BOLT, M12X75 LEFT SCREW | 1 | |
| 13 | 1503180130 | SLEEVE BEARING, 18DX20DX20 | 2 | |
| 14 | A400055501 | LINK, FRONT SHAFT | 1 | |
| 15 | 0040720000 | SNAP RING, 20 | 8 | |
| 20 | A300090600 | LINK, HANDLE | 1..... | S/N G4100153 AND BELOW |
| 20 | A300090601 | LINK, HANDLE | 1..... | S/N G4100154 AND ABOVE |
| 21 | 0043112000 | WASHER, M12 | 3 | |
| 22 | 1504120130 | WASHER, 12.2DX18DX0.5 | 6 | |
| 23 | 0033208000 | SELF LOCK NUT, M8 | 1 | |
| 24 | 0030808000 | PUSH NUT, 8 | 3 | |
| 25 | 0013512025 | BOLT AND WASHER, M12X25 | 1 | |
| 26 | 0043112041 | WASHER, 12DX40DX3.2 | 1 | |
| 27 | A400055401 | LINK, STEERING | 1 | |
| 28 | E000021400 | PNEUMATIC TIRE | 4 | |
| 31 | 0013510025 | BOLT AND WASHER, M10X25 | 10 | |
| 32 | A400033402 | CATCHER, OUTRIGGER | 2 | |
| 46 | A400055101 | SPACER | 1 | |
| 47 | E000031200 | WASHER, 20DX36DX1.5 | 2 | |
| 48 | E000233200 | GREASE NIPPLE | 2 | |
| 49 | E000233300 | CAP, GREASE NIPPLE | 2 | |

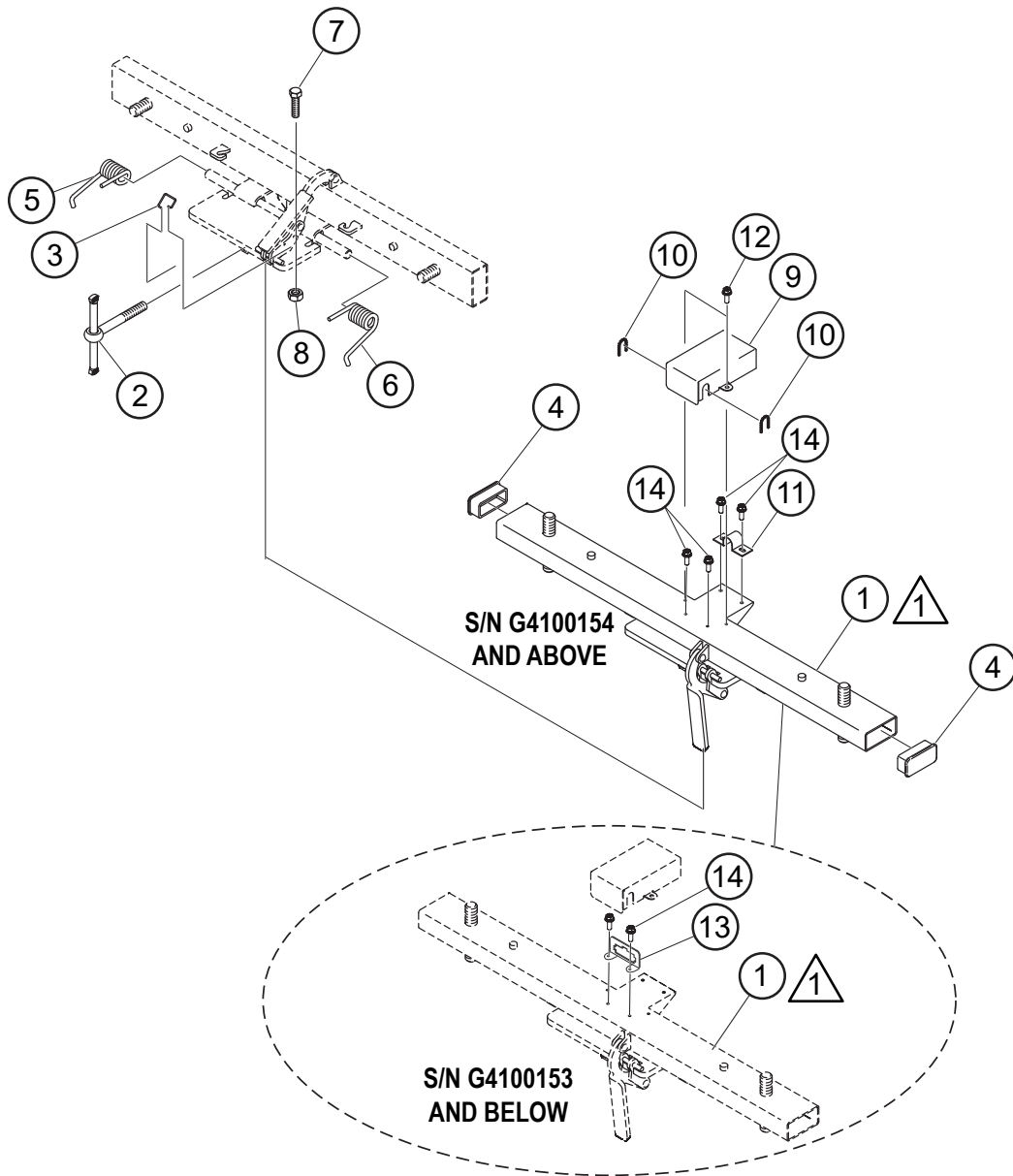
OUTRIGGER ASSY.



OUTRIGGER ASSY.

| <u>NO.</u> | <u>PART NO.</u> | <u>PART NAME</u> | <u>QTY.</u> | <u>REMARKS</u> |
|------------|-----------------|--------------------------|-------------|---------------------|
| 29 | 0033116000 | NUT, M16 | 2 | |
| 30\$ | 1641000330 | RUBBER FOOT | 2 | |
| 31 | 0013510025 | BOLT AND WASHER, M10X25 | 10 | |
| 33 | A200015203 | OUTRIGGER (L) | 1 | INCLUDES ITEMS W/\$ |
| 34 | A200015303 | OUTRIGGER (R) | 1 | INCLUDES ITEMS W/\$ |
| 35 | A100011501 | BRACKET (OUT, R) L | 1 | |
| 36 | A100011601 | BRACKET (OUT, R) R | 1 | |
| 37 | 2031320213 | WEIGHT (OUT, R) L | 1 | |
| 38 | 2031321113 | WEIGHT (OUT, R) R | 1 | |
| 39 | 1501160111 | SPACER (OUT, R) | 2 | |
| 40 | 1501100430 | SPACER, 10.2DX13.8DX6.5L | 2 | |
| 41 | 0043110000 | WASHER, M10 | 4 | |
| 42 | 0033210000 | SELF LOCK NUT, M10 | 2 | |
| 43 | 0043216000 | WASHER, LOCK, M16 | 2 | |
| 44 | 0013116090 | BOLT, M16X90 | 2 | |
| 45 | 0043116000 | WASHER, M16 | 2 | |

MAST ADAPTER ASSY.



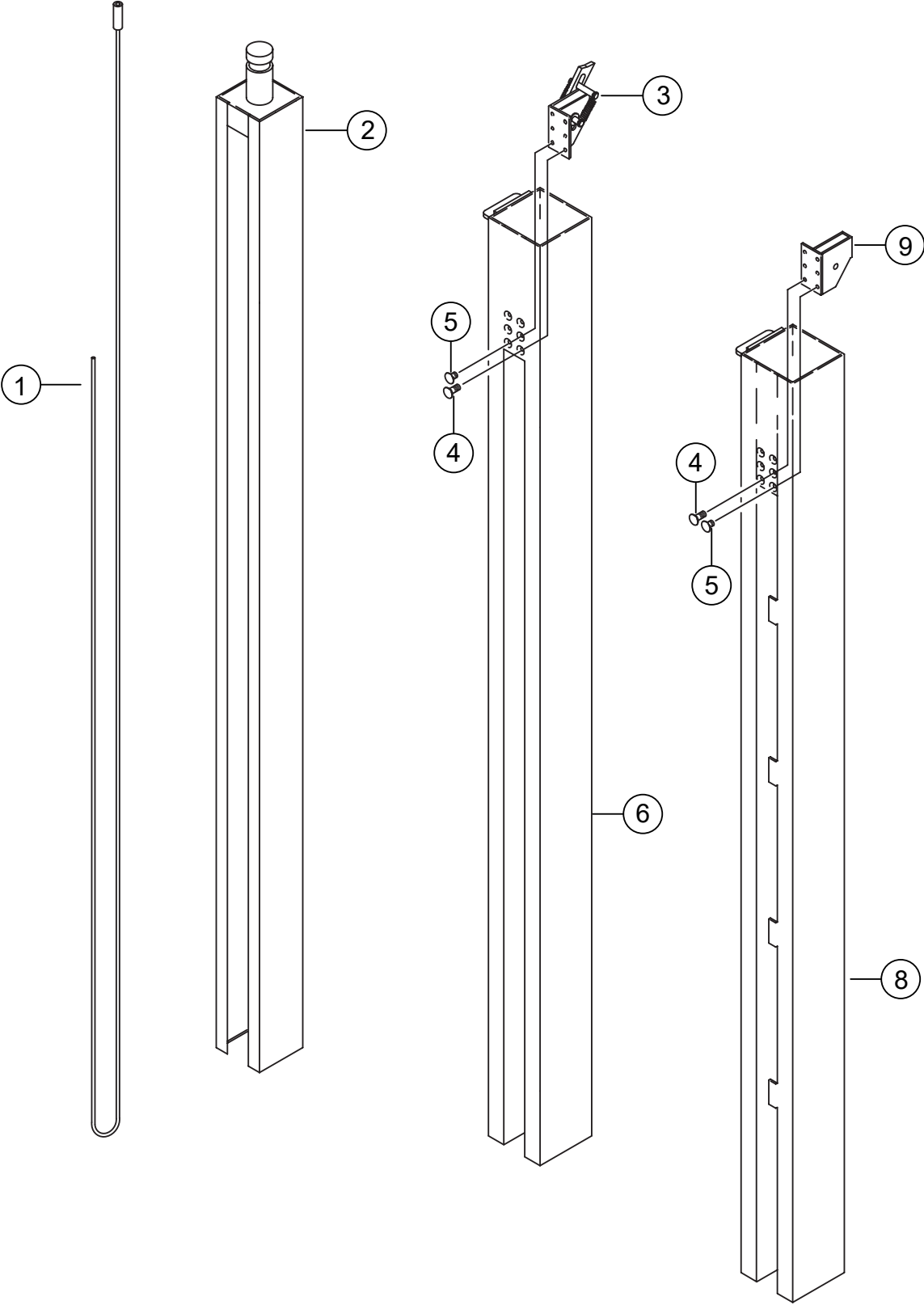
NOTES:

△ ITEM 1 INCLUDES ITEMS 3 TO 8.

MAST ADAPTER ASSY.

| <u>NO.</u> | <u>PART NO.</u> | <u>PART NAME</u> | <u>QTY.</u> | <u>REMARKS</u> |
|------------|-----------------|---------------------------------------|-------------|-----------------------------------------------|
| 1 | A100037300 | LAMP STAND COMPLETE..... | 1..... | INCLUDES ITEMS W/# S/N G4100106 AND BELOW |
| 1 | A100037302 | LAMP STAND COMPLETE (OVAL LAMP) | 1..... | INCLUDES ITEMS W/% S/N G4100107 ~ G4100153 |
| 1 | A1000086001 | LAMP STAND COMPLETE..... | 1..... | INCLUDES ITEMS W/\$ S/N G4100154 AND ABOVE |
| 2 | 2072310114 | ADJUST LEVER (LAMP STAND) | 1 | |
| 3#%\$ | 1045000130 | SPRING (LEVER) | 1 | |
| 4#%\$ | 1652000131 | END CAP | 2 | |
| 5#%\$ | A300093000 | SPRING (LAMP STAND) L | 1 | |
| 6#%\$ | A300092600 | SPRING (LAMP STAND) R | 1 | |
| 7#%\$ | 0010308030 | BOLT (M8 X 30) | 1 | |
| 8#%\$ | 0033108000 | NUT (M8) | 1 | |
| 9 | 2072400510 | CONNECTOR COVER | 1 | |
| 10 | E000012000 | FREE BUSH | 2 | |
| 11 | 1603000730 | CLAMP | 1 | |
| 12 | 0028204012 | UPSET BOLT ASSY., SC M4X12..... | 2..... | S/N G4100154 AND ABOVE |
| 13 | A400475701 | BRACKET, COUPLER..... | 1..... | S/N G4100107 ~ G4100153 |
| 14 | 0023304012 | SCREW AND WASHER ASSY., M4X12 | 2..... | S/N G4100107 ~ G4100153 |
| 14 | 0023304012 | SCREW AND WASHER ASSY., M4X12 | 4..... | S/N G4100154 AND ABOVE |

MAST SECTION ASSY.



MAST SECTION ASSY.

| <u>NO.</u> | <u>PART NO.</u> | <u>PART NAME</u> | <u>QTY.</u> | <u>REMARKS</u> |
|------------|-----------------|----------------------------|-------------|----------------|
| 1 | 1031041010 | WIRE ROPE COMPLETE | 1 | |
| 2 | A200030801 | FOURTH MAST COMPLETE | 1 | |
| 3 | 2012263010 | BRACKET(PULLEY) 3 COMPLETE | 1 | |
| 4 | 0025004010 | SCREW (M4X10) | 6 | |
| 5 | 0025004006 | SCREW (M4X6) | 6 | |
| 6 | A200030700 | THIRD MAST COMPLETE | 1 | |
| 8 | A200027200 | SECOND MAST COMPLETE | 1 | |
| 9 | 2002262010 | BRACKET(PULLEY) 2 COMPLETE | 1 | |

PARTS MANUAL

HERE'S HOW TO GET HELP

PLEASE HAVE THE MODEL AND SERIAL
NUMBER ON-HAND WHEN CALLING

UNITED STATES

Multiquip Inc.

(310) 537- 3700
6141 Katella Avenue Suite 200
Cypress, CA 90630
E-MAIL: mq@multiquip.com
WEBSITE: www.multiquip.com

CANADA

Multiquip

(450) 625-2244
4110 Industriel Boul.
Laval, Quebec, Canada H7L 6V3
E-MAIL: infocanada@multiquip.com

UNITED KINGDOM

Multiquip (UK) Limited Head Office

0161 339 2223
Unit 2, Northpoint Industrial Estate,
Globe Lane,
Dukinfield, Cheshire SK16 4UJ
E-MAIL: sales@multiquip.co.uk

© COPYRIGHT 2023, MULTIQUIP INC.

Multiquip Inc, the MQ logo are registered trademarks of Multiquip Inc. and may not be used, reproduced, or altered without written permission. All other trademarks are the property of their respective owners and used with permission.

This manual MUST accompany the equipment at all times. This manual is considered a permanent part of the equipment and should remain with the unit if resold.

The information and specifications included in this publication were in effect at the time of approval for printing. Illustrations, descriptions, references and technical data contained in this manual are for guidance only and may not be considered as binding. Multiquip Inc. reserves the right to discontinue or change specifications, design or the information published in this publication at any time without notice and without incurring any obligations.

