



GB43SC

Hitch Adapter Installation Instructions

The following instructions are intended to assist the user in the installation of the Hitch Adapter to the GB43SC GloBug Cart. Please read all assembly instructions before installation.

REQUIRED TOOLS

- 3/8" Ratchet with socket set.

PARTS

Verify that all parts are accounted for. See Figure 1 and Table 1.

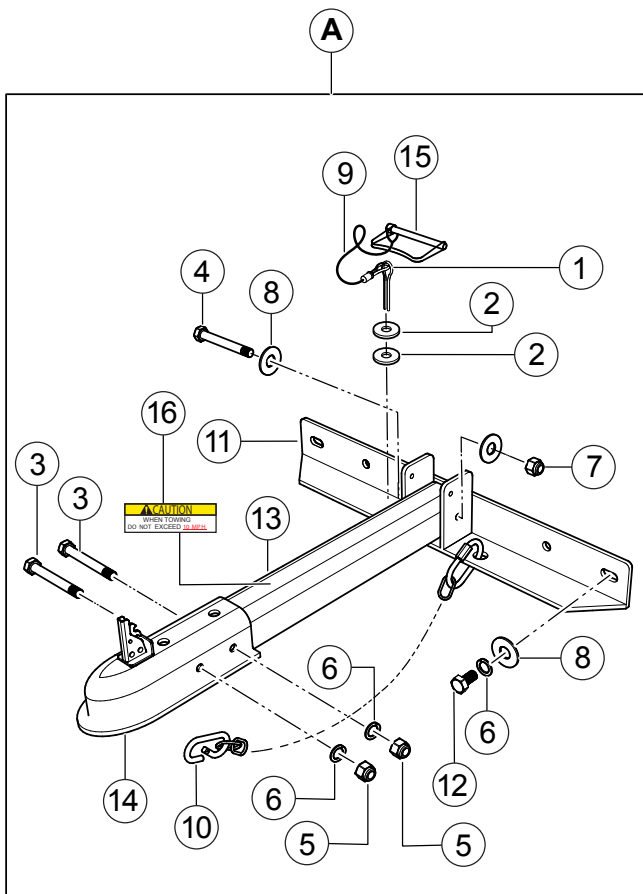


Figure 1. Hitch Adapter Assy

Table 1. Hitch Adapter Parts

Item No.	Part No.	Description	QTY.	Remarks
A	49507	Assy, Hitch Adapter	1	Includes items 1-15
1	0183	Pin, Cotter 1/8D x 1 1/4	1	
2	2203	Washer, Flat #10	2	
3	2549	Screw, HHC 1/2-13 x 3	2	
4	3215	Screw, HHC 1/2-13 x 3-1/2	1	
5	3528	Nut, Hex Finish 1/2-13 NP	2	
6	5054 A	Washer, Lock 1/2 Med	6	
7	10176	Nut, Nyloc 1/2-13	1	
8	13211	Washer, Flat 1/2 USS	6	
9	19484	Lanyard 10"	1	
10	19975	Chain Assy, Safety 7600 lb	1	
11	49513	Hitch Adapter W/A	1	
12	49515	Screw, HHC M12-1.75x25	4	
13	49519	Tongue, Hitch Adapter	1	
14	49520	Hitch, Ball, 2" Ball, 2.5" Tube	1	
15	49521	Pin, Hitch, Wire Lock, 5/16" Dia. x 3	1	
16	49545	Decal, Towing Caution	1	

WORK SAFELY!

Only a person with proper training should perform this installation. Follow all safety rules when performing this installation.

PREPARATION

1. Place the GB43SC cart in an area free of dirt and debris. Make sure it is on secure level ground.
2. Apply the parking brake. For additional safety, use chock blocks underneath each wheel to prevent the cart from rolling.

INSTALLATION

1. On the front end of the cart, install the hitch adapter with the associated hardware as shown in Figure 2.

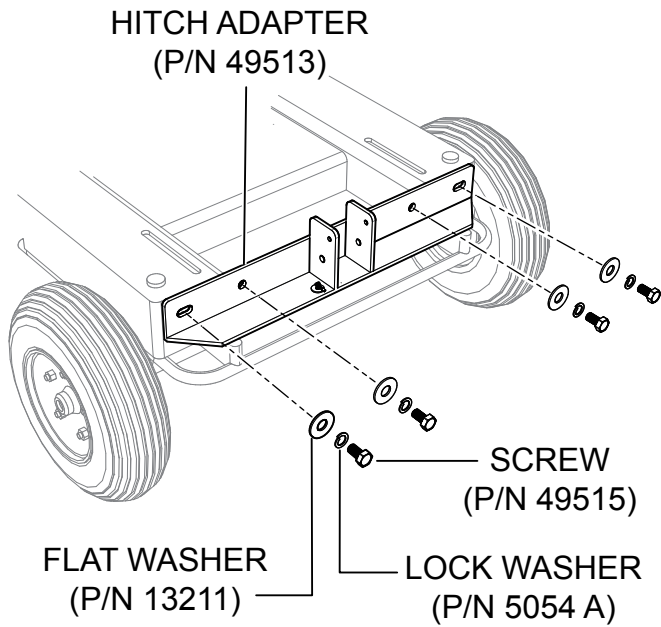


Figure 2. Hitch Adapter Installation

2. Install the tongue into the hitch adapter with the associated hardware as shown in Figure 3.

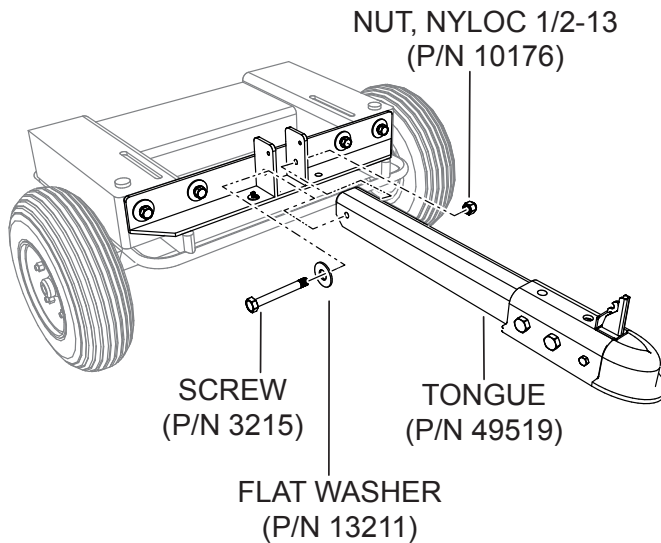


Figure 3. Hitch Adapter Tongue Installation

TOWING

NOTICE

The hitch adapter has a 2-inch ball coupler. The towing vehicle should have a 2-inch hitch ball that is compatible with the coupler.

3. Attach the hitch adapter to the towing vehicle as shown in Figure 4. Be sure the coupler is all the way on the hitch ball and the locking mechanism is engaged.
4. Attach the safety chain (see Figure 4).

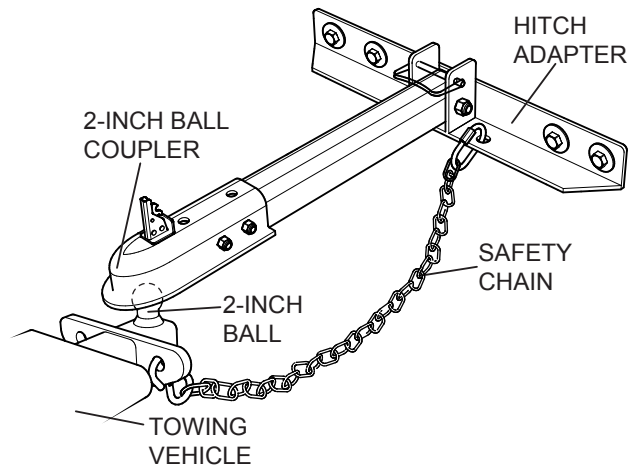


Figure 4. Connection to the Towing Vehicle



STOWING THE HITCH ADAPTER

1. After towing the GB43SC, make sure that the hitch adapter is stowed in the upright position. See Figure 5.
2. Snap the wire lock to the pin to secure the hitch adapter in place.

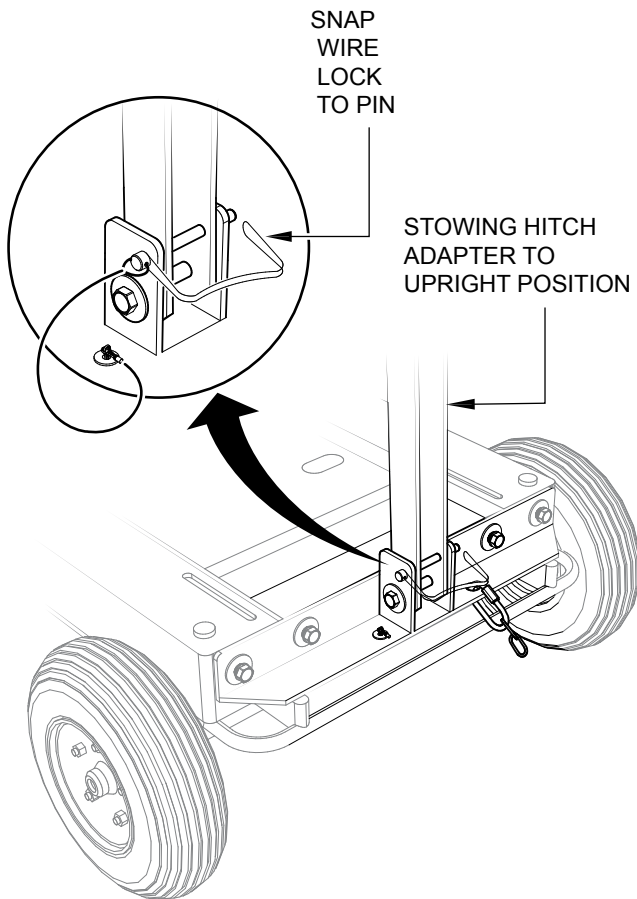


Figure 5. Stowed Hitch Adapter



GB43SC GloBug Cart

Hitch Adapter Installation Instructions

HERE'S HOW TO GET HELP

PLEASE HAVE THE MODEL AND SERIAL
NUMBER ON-HAND WHEN CALLING

UNITED STATES

Multiquip Corporate Office

18910 Wilmington Ave. Tel. (800) 421-1244
Carson, CA 90746 Fax (800) 537-3927
Contact: mq@multiquip.com

Service Department

800-421-1244 Fax: 310-537-4259
310-537-3700

Technical Assistance

800-478-1244 Fax: 310-943-2238

MQ Parts Department

800-427-1244 Fax: 800-672-7877
310-537-3700 Fax: 310-637-3284

Warranty Department

800-421-1244 Fax: 310-943-2249
310-537-3700

MEXICO

MQ Cipsa

Carr. Fed. Mexico-Puebla KM 126.5 Tel: (52) 222-225-9900
Momoxpan, Cholula, Puebla 72760 Mexico Fax: (52) 222-285-0420
Contact: pmastretta@cipsa.com.mx

CANADA

Multiquip

4110 Industriel Boul. Tel: (450) 625-2244
Laval, Quebec, Canada H7L 6V3 Tel: (877) 963-4411
Contact: jmartin@multiquip.com Fax: (450) 625-8664

UNITED KINGDOM

Multiquip (UK) Limited Head Office

Unit 2, Northpoint Industrial Estate, Tel: 0161 339 2223
Globe Lane, Fax: 0161 339 3226
Dukinfield, Cheshire SK16 4UJ
Contact: sales@multiquip.co.uk

© COPYRIGHT 2011, MULTIQUIP INC.

Multiquip Inc and the MQ logo are registered trademarks of Multiquip Inc. and may not be used, reproduced, or altered without written permission. All other trademarks are the property of their respective owners and used with permission.

The information and specifications included in this publication were in effect at the time of approval for printing. Illustrations, descriptions, references and technical data contained in this document are for guidance only and may not be considered as binding. Multiquip Inc. reserves the right to discontinue or change specifications, design or the information published in this publication at any time without notice and without incurring any obligations.

Your Local Dealer is:

