

PARTS MANUAL



GLOBUG MODEL GBBAT3S4M LIGHT TOWER

Revision #0 (12/05/24)

To find the latest revision of this publication or associated operation manual, visit our website at: www.multiquip.com



THIS MANUAL MUST ACCOMPANY THE EQUIPMENT AT ALL TIMES.

GBBAT3S4M

Light Tower

Explanation Of Code In Remarks Column..... 4
Suggested Spare Parts 5

Component Drawings

Nameplate And Decals 6-7
Nameplate And Decals (Control Box)..... 8-9
Lighting Unit Assembly 10-11
Lampstand Assembly 12-13
Mast 1 Assembly 14-15
Mast 2 Assembly 16-17
Cover Assembly..... 18-19
Base Assembly 20-21
Control Box Assembly 22-25
Battery Assembly 26-27
Wiring 1 (Block Diagram) Assembly 28-29
Wiring 2 (Control Box) Assembly..... 30-31
Wiring 3 (Control Circuit Board) Assembly 32-33

NOTICE
Part numbers are subject to change without notice.

EXPLANATION OF CODE IN REMARKS COLUMN

The following section explains the different symbols and remarks used in the Parts section of this manual. Use the help numbers found on the back page of the manual if there are any questions.

NOTICE

The contents and part numbers listed in the parts section are subject to change without notice. Multiquip does not guarantee the availability of the parts listed.

SAMPLE PARTS LIST

NO.	PART NO.	PART NAME	QTY.	REMARKS
1	12345	BOLT	1	INCLUDES ITEMS W/%
2%		WASHER, 1/4 IN.		NOT SOLD SEPARATELY
2%	12347	WASHER, 3/8 IN. ...	1	MQ-45T ONLY
3	12348	HOSE	A/R	MAKE LOCALLY
4	12349	BEARING	1	S/N 2345B AND ABOVE

NO. Column

Unique Symbols — All items with same unique symbol (@, #, +, %, or >) in the number column belong to the same assembly or kit, which is indicated by a note in the “Remarks” column.

Duplicate Item Numbers — Duplicate numbers indicate multiple part numbers, which are in effect for the same general item, such as different size saw blade guards in use or a part that has been updated on newer versions of the same machine.

NOTICE

When ordering a part that has more than one item number listed, check the remarks column for help in determining the proper part to order.

PART NO. Column

Numbers Used — Part numbers can be indicated by a number, a blank entry, or TBD.

TBD (To Be Determined) is generally used to show a part that has not been assigned a formal part number at the time of publication.

A blank entry generally indicates that the item is not sold separately or is not sold by Multiquip. Other entries will be clarified in the “Remarks” Column.

QTY. Column

Numbers Used — Item quantity can be indicated by a number, a blank entry, or A/R.

A/R (As Required) is generally used for hoses or other parts that are sold in bulk and cut to length.

A blank entry generally indicates that the item is not sold separately. Other entries will be clarified in the “Remarks” Column.

REMARKS Column

Some of the most common notes found in the “Remarks” Column are listed below. Other additional notes needed to describe the item can also be shown.

Assembly/Kit — All items on the parts list with the same unique symbol will be included when this item is purchased.

Indicated by:

“INCLUDES ITEMS W/(unique symbol)”

Serial Number Break — Used to list an effective serial number range where a particular part is used.

Indicated by:

“S/N XXXXX AND BELOW”

“S/N XXXX AND ABOVE”

“S/N XXXX TO S/N XXX”

Specific Model Number Use — Indicates that the part is used only with the specific model number or model number variant listed. It can also be used to show a part is NOT used on a specific model or model number variant.

Indicated by:

“XXXXX ONLY”

“NOT USED ON XXXX”

“Make/Obtain Locally” — Indicates that the part can be purchased at any hardware shop or made out of available items. Examples include battery cables, shims, and certain washers and nuts.

“Not Sold Separately” — Indicates that an item cannot be purchased as a separate item and is either part of an assembly/kit that can be purchased, or is not available for sale through Multiquip.

SUGGESTED SPARE PARTS

GBBAT3S4M GLOBUG LIGHT TOWER

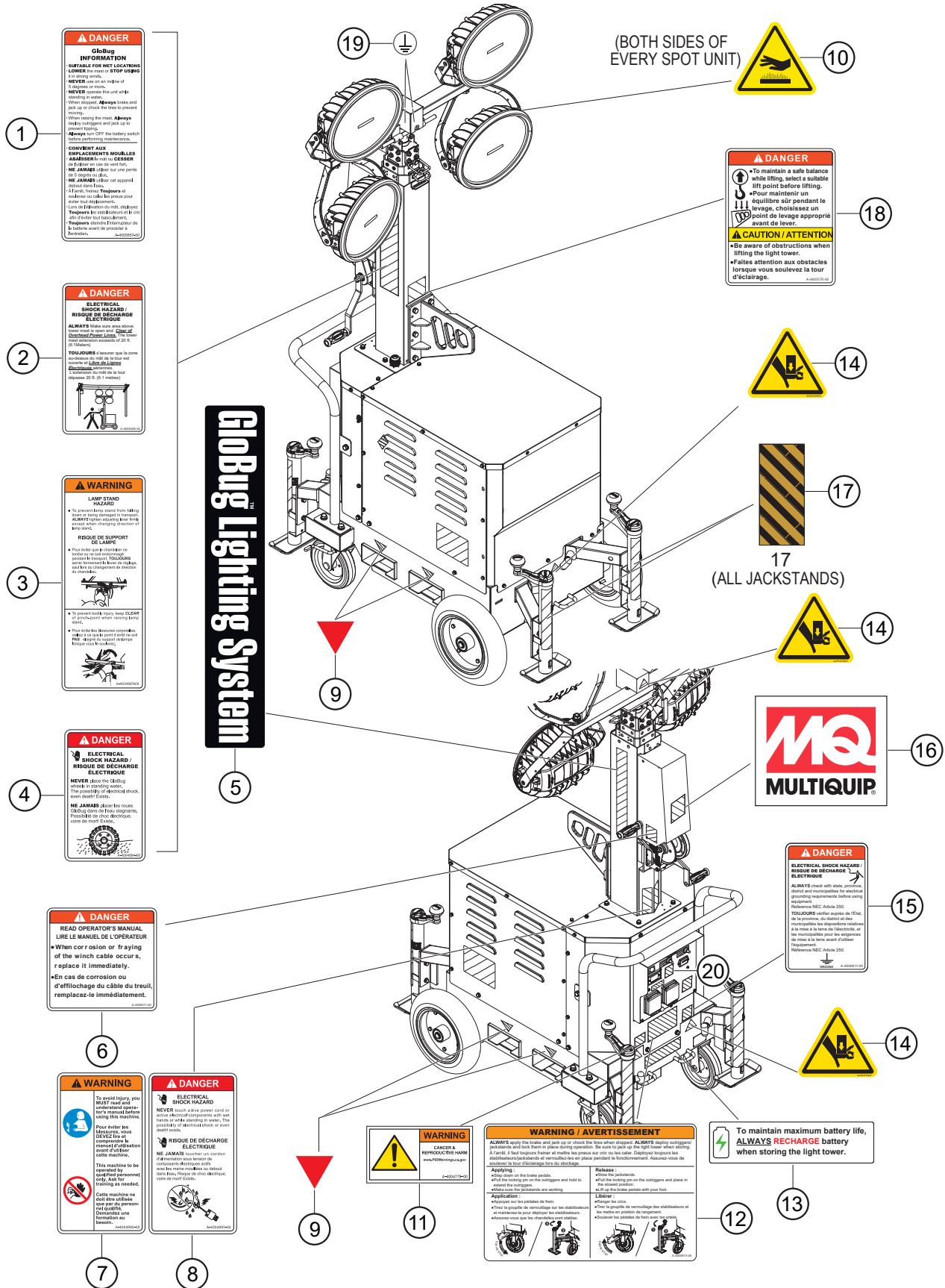
1 to 3 units

Qty.	P/N	Description
2.....	E000267800	JACKSTAND
1.....	A200195801	POWER SUPPLY ASSY.
2.....	A000118700	LED 300W SLU (L) ASSY.
2.....	A000118800	LED 300W SLU (R) ASSY.
1.....	A300473700	CIRCUIT BREAKER, 15A
1.....	E000277200	MOM. PUSH BUTTON SW.
1.....	A300473600	HOUR METER W/CABLE
1.....	E000153400	TOGGLE SW., LIGHTING UNIT
1.....	E000191500	TOGGLE SW., DIMMING
1.....	A300474900	CONTROL CIRCUIT BOARD ASSY.

NOTICE

Part numbers on this Suggested Spare Parts list may supersede/replace the part numbers shown in the following parts lists.

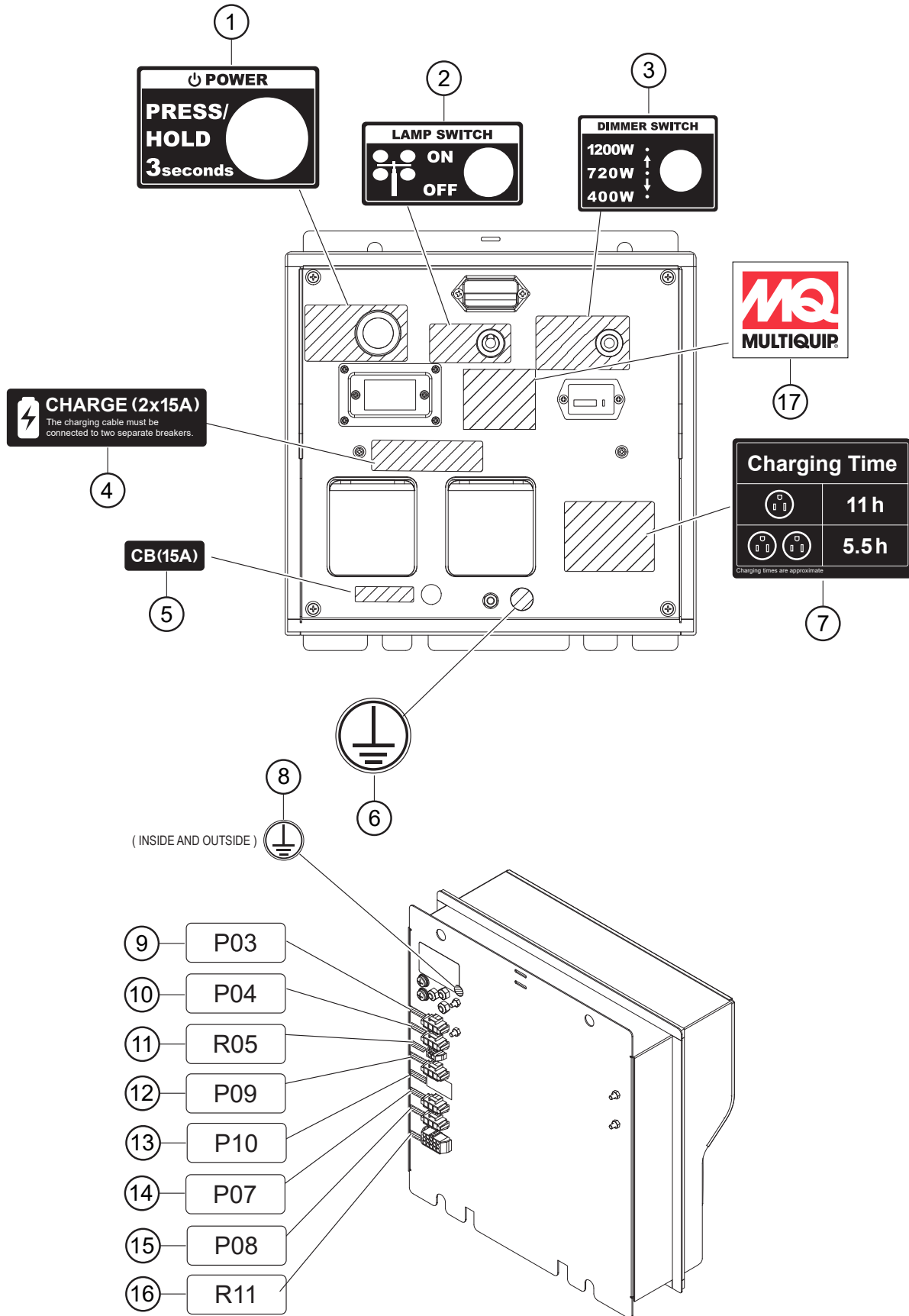
NAMEPLATE AND DECALS



NAMEPLATE AND DECALS

<u>NO.</u>	<u>PART NO.</u>	<u>PART NAME</u>	<u>QTY.</u>	<u>REMARKS</u>
1	A400585700	DECAL: GLOBUG INFORMATION	1	
2	A400555800	DECAL: DANGER, POWER LINE	1	
3	A400498700	DECAL: LAMPSTAND	1	
4	A400499400	DECAL: DANGER, TIRE	1	
5	A400447600	DECAL: NAME, GLOBUG FRAME	1	
6	A400557100	DECAL: DANGER, WINCH CABLE	1	
7	A400499500	DECAL: MANUAL	1	
8	A400499300	DECAL: DANGER, ELECTRICAL SHOCK	1	
9	A400111200	DECAL: TRIANGLE RED	4	
10	A400492200	DECAL: BURN HAZARD	8	
11	A400477900	DECAL: PROP 65	1	
12	A400557300	DECAL: WARNING, BRAKE, OUTRIGGER	1	
13	A400591500	DECAL: RECHARGER	1	
14	A400447800	DECAL: FINGER CAUTION	4	
15	A400591700	DECAL: GROUND	1	
16	A400447300	DECAL: MQ LOGO	1	
17	A300469300	SAFETY STRIPE TAPE	4	
18	A400557000	DECAL: DANGER, CAUTION, LIFT POINT	1	
19	A400372800	DECAL: GROUND	3	
20	A400594200	DECAL: MQ LOGO ZERO	2	

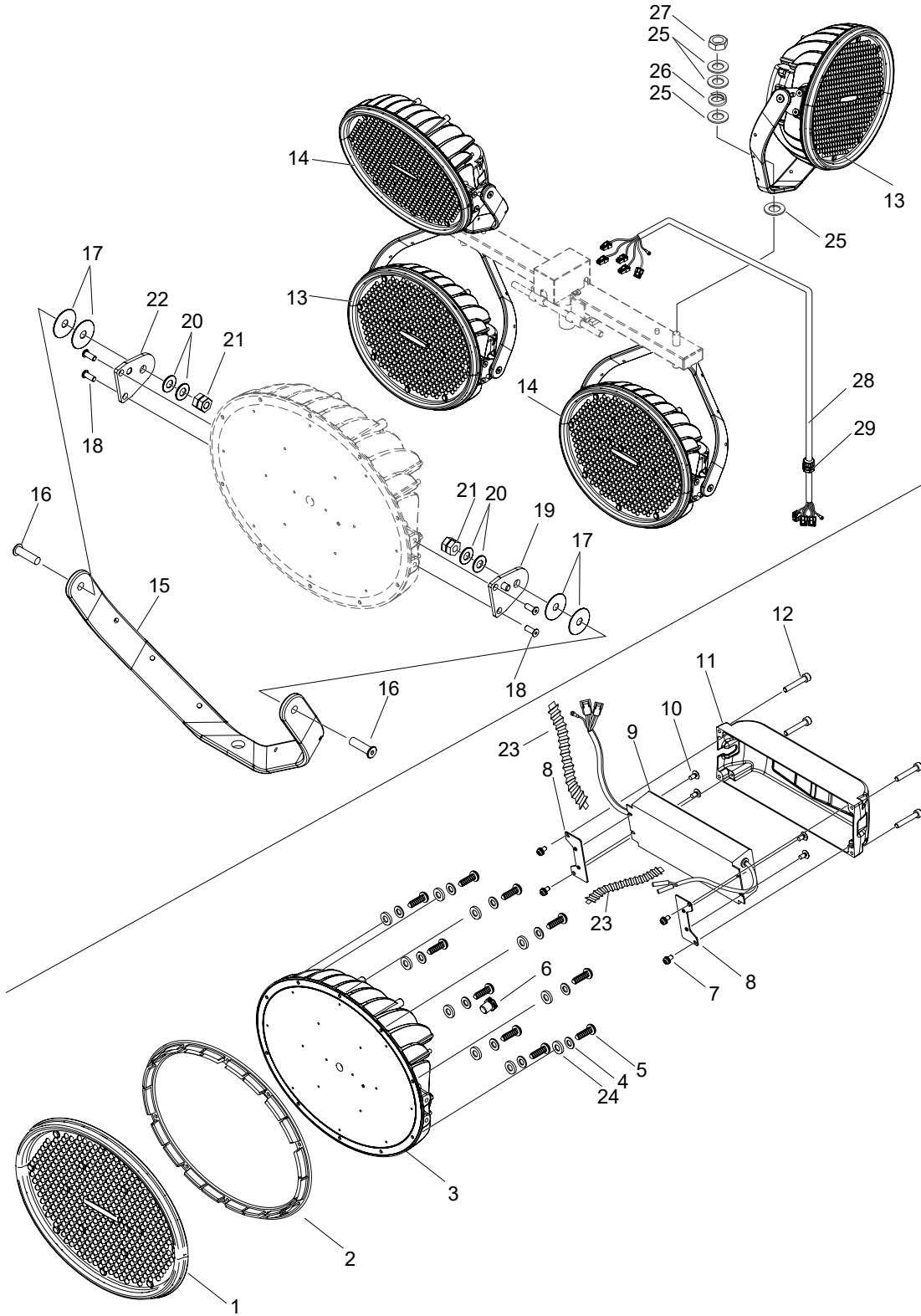
NAMEPLATE AND DECALS (CONTROL BOX)



NAMEPLATE AND DECALS (CONTROL BOX)

<u>NO.</u>	<u>PART NO.</u>	<u>PART NAME</u>	<u>QTY.</u>	<u>REMARKS</u>
1	A400590800	DECAL: POWER SWITCH	1	
2	A400590900	DECAL: LIGHT SWITCH	1	
3	A400591000	DECAL: DIMMER SWITCH	1	
4	A400591100	DECAL: CHARGE, 2X15A	1	
5	A400591200	DECAL: CB 15A	1	
6	A400457300	DECAL: GROUND ϕ 25	1	
7	A400591300	DECAL: CHARGING TIME	1	
8	A400372800	DECAL: GROUND	2	
9	A400591800	DECAL: CN03, P03, UPPER LIGHTS	1	
10	A400591900	DECAL: CN, P04	1	
11	A400592000	DECAL: CN, R5	1	
12	A400592100	DECAL: CN9, P09	1	
13	A400592200	DECAL: CN10, P10	1	
14	A400592300	DECAL: CONNECTOR, P07	1	
15	A400592400	DECAL: CN8, P08	1	
16	A400592500	DECAL: CN11,R11	1	
17	A400594200	DECAL: MQ LOGO	1	

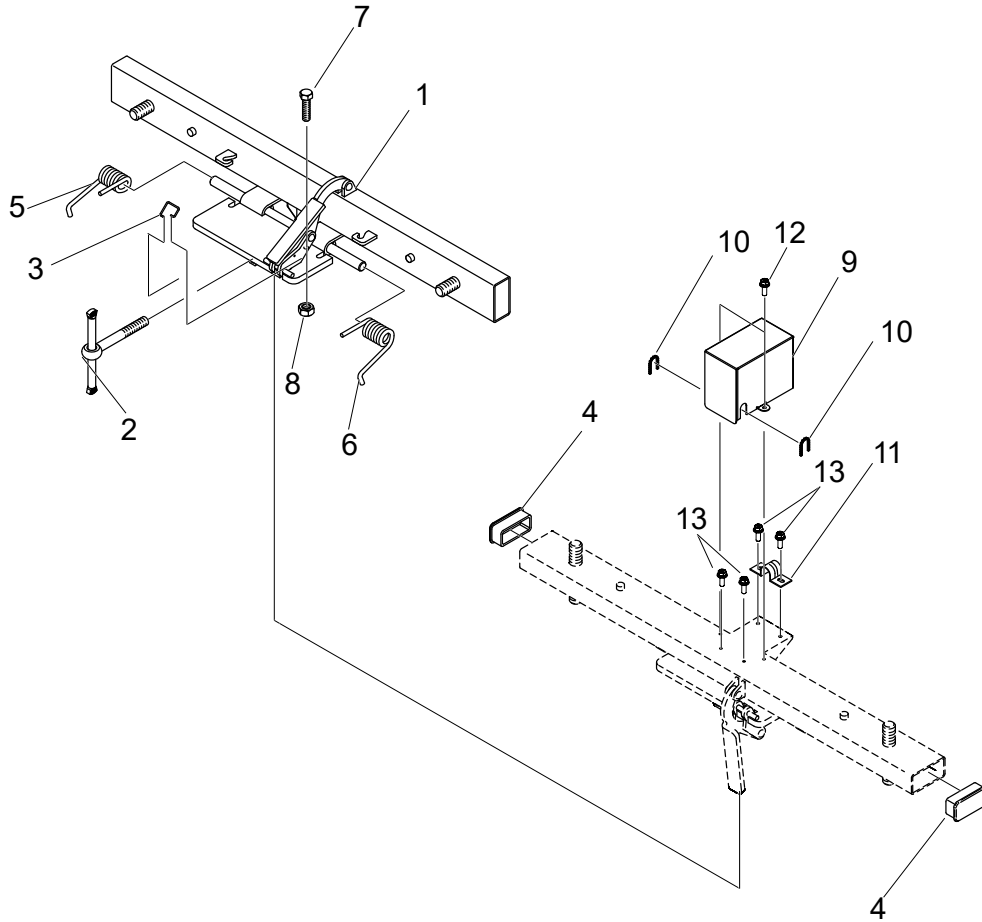
LIGHTING UNIT ASSY.



LIGHTING UNIT ASSY.

<u>NO.</u>	<u>PART NO.</u>	<u>PART NAME</u>	<u>QTY.</u>	<u>REMARKS</u>
1	A100181300	LENS COVER, 300W LED SPOT	4	
2	A200291200	GASKET	4	
3	A000110300	HEAT SINK ASSY. W/LED ILLUMINANTS	4	
4	0046105000	WASHER M5, BLACK	40	
5	0027505020	TAPPING SCREW M5X20, BLACK.....	40	SPECIFIED TORQUE: 1.5N•m
6	E000119700	VENT FILTER	4	SPECIFIED TORQUE: 0.7N•m
7	0027405012	SCREW AND WASHER ASSY. M5X12	16	
8	A400553800	PLATE, POWER SUPPLY	8	
9	A200195802	POWER SUPPLY (US)	4	
10	0022404008	TRUSS HEAD SCREW M4X8	16	
11	A100181500	CASE, POWER SUPPLY	4	
12	0017405030	HEX. SOCKET HEAD BOLT SUS M5X30	16	
13	A000118701	LED 300W SPOT LIGHT UNIT LEFT ASSY.	2	
14	A000118801	LED 300W SPOT LIGHT UNIT RIGHT ASSY.	2	
15	A100190000	ARM, LED SPOT	4	
16	0017510035	SLIM HEAD SCREW M10X35, BLACK	8	
17	A400517900	WASHER, 38 DIA.	16	
18	0017508020	SLIM HEAD SCREW M8X20, BLACK	16	
19	A300459000	BRACKET, ARM LEFT	4	
20	A400418100	WASHER M10	16	
21	0036410000	HARD LOCK NUT M10.....	8	SPECIFIED TORQUE: CONVEX NUT: 10N•m, CONCAVE NUT: 24N•m
22	A300459100	BRACKET, ARM RIGHT	4	
23	A400573501	CORRUGATED TUBE, L=16" (406 MM)	12	
24	E000282800	WASHER, WATER PROOF M5	40	
25	E000144001	WASHER M16, FLUORINE	16	
26	1042000230	SPRING, LAMP	4	
27	0034116000	NUT M16, LOW	4	
28	A200197100	LAMP CABLE, US-BAT.....	1	INCLUDES ITEM W/\$
29\$	E000267900	CABLE GLAND	1	

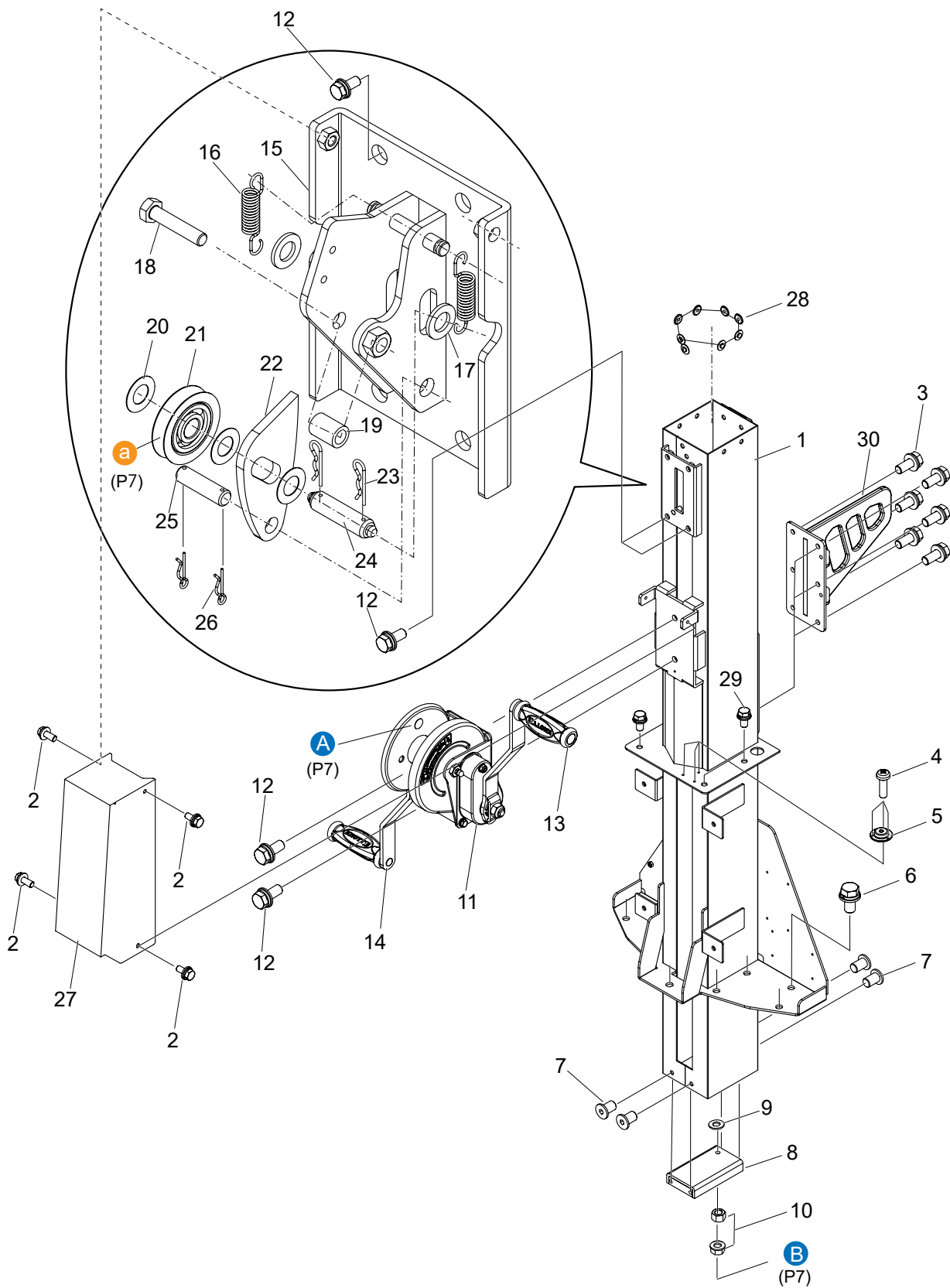
LAMPSTAND ASSY.



LAMPSTAND ASSY.

<u>NO.</u>	<u>PART NO.</u>	<u>PART NAME</u>	<u>QTY.</u>	<u>REMARK</u>
1	A000086001	LAMP STAND ASSY	1.....	INCLUDES ITEMS W/#
2	2072310114	ADJUST LEVER, LAMP STAND	1	
3#	1045000130	SPRING, LEVER	1	
4#	1652000131	CAP	2	
5#	A300093000	SPRING, LAMP STAND LEFT	1	
6#	A300092600	SPRING, LAMP STAND RIGHT	1	
7#	011208030	HEX BOLT, M8X30	1.....	REPLACES P/N 0010308030
8#	0033108000	NUT, M8	1	
9	A200195400	COVER, CONNECTOR	1	
10	E000012000	TRIM SEAL, L=2.4" (60.96 MM)	2	
11	1603000130	CLAMP	1	
12	0028204012	UPSET BOLT ASSY.,SS, M4X12	2	
13	0023304012	SCREW AND WASHER ASSY., M4X12	4	

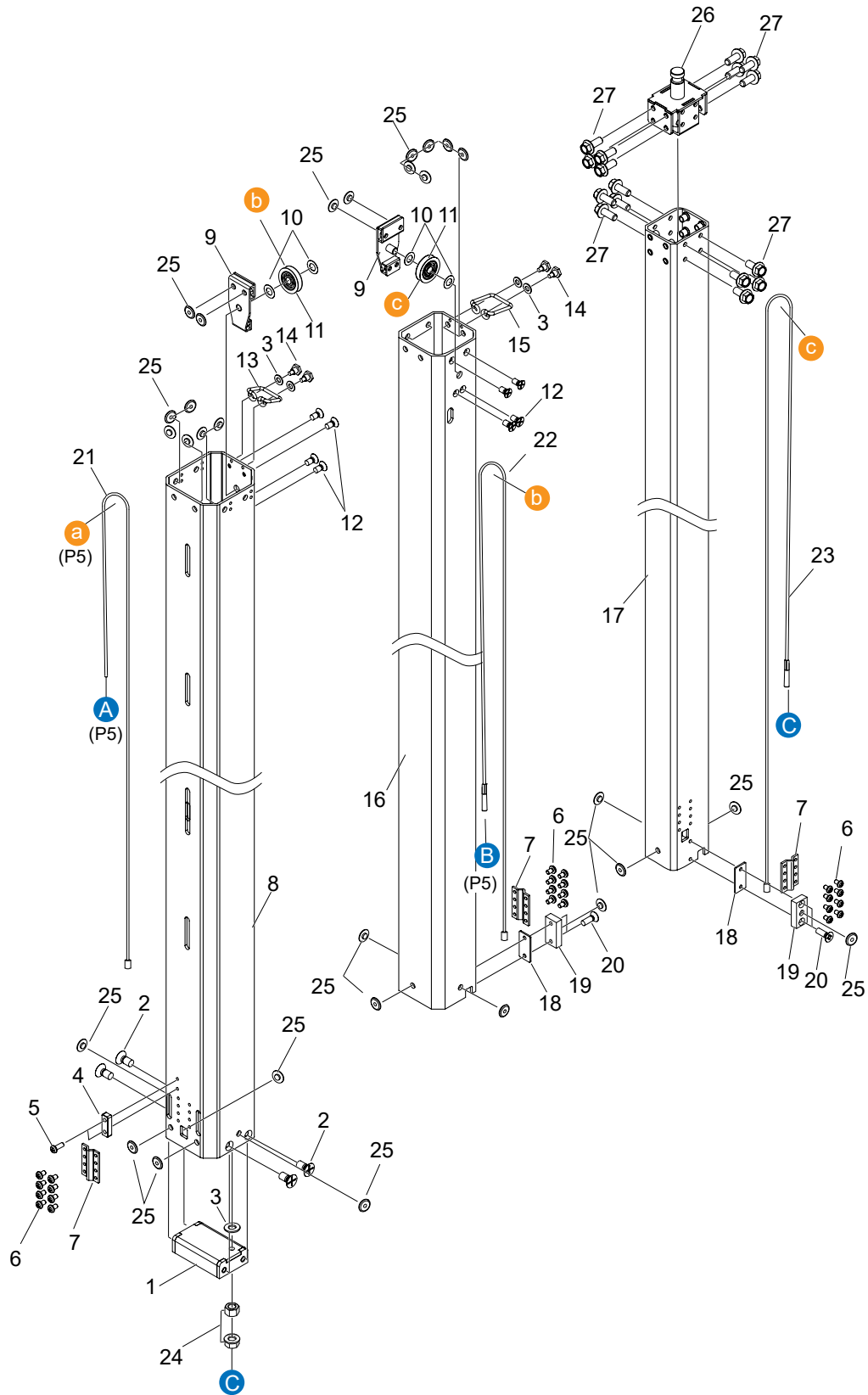
MAST 1 ASSY.



MAST 1 ASSY.

<u>NO.</u>	<u>PART NO.</u>	<u>PART NAME</u>	<u>QTY.</u>	<u>REMARK</u>
1	A100191901	FIRST MAST.....	1.....	INCLUDES ITEMS W/#
2	0012506015	BOLT AND WASHER ASSY., M6X15	4	
3	0012510022	BOLT AND WASHER ASSY., M10X22	6	
4	0023503006	SCREW M3X6	3.....	APPLY THREE BOND 1401B
5	E000182900	BUBBLE LEVEL GUIDE	1	
6	0012512025	BOLT AND WASHER ASSY. M12X25	9	
7	0015608012	SLIM HEAD SCREW M8X12	4	
8	A300437100	BRACKET, 1ST MAST	1	
9	0044108000	WASHER M8	1	
10	0034808000	HARDLOCK NUT M8	1	
11	A100157700	WINCH, DUAL HANDLE	1	
12	0012510020	BOLT AND WASHER ASSY., M10X20	6	
13	E000249100	HANDLE RIGHT, WINCH	1	
14	E000249000	HANDLE LEFT, WINCH	1	
15	A100197100	BRACKET, PULLEY	1	
16	A400285400	SPRING, PULLEY	2	
17	E000258700	PARALLEL WASHER, PULLEY	2	
18	0013108040	BOLT M8X40	1	
19	E000257600	SPACER 1, PULLEY	1	
20	E000176600	WASHER D12.5 X D26 X T0.5	3	
21	A400362700	PULLEY	1	
22	A400520500	STOPPER	1	
23	0053512000	COTTER, PIN #12	2	
24	A400519900	PIN, PULLEY	1	
25	A400284700	PIN, STOPPER	1	
26	0053510000	COTTER PIN, #10	2	
27	A200174302	COVER, WINCH	1	
28#	A400563302	SLIDER	8.....	APPLY STRONG ADHESIVE
29	0012508020	BOLT AND WASHER ASSY., M8X20	4	
30	A200178600	HANGER	1	

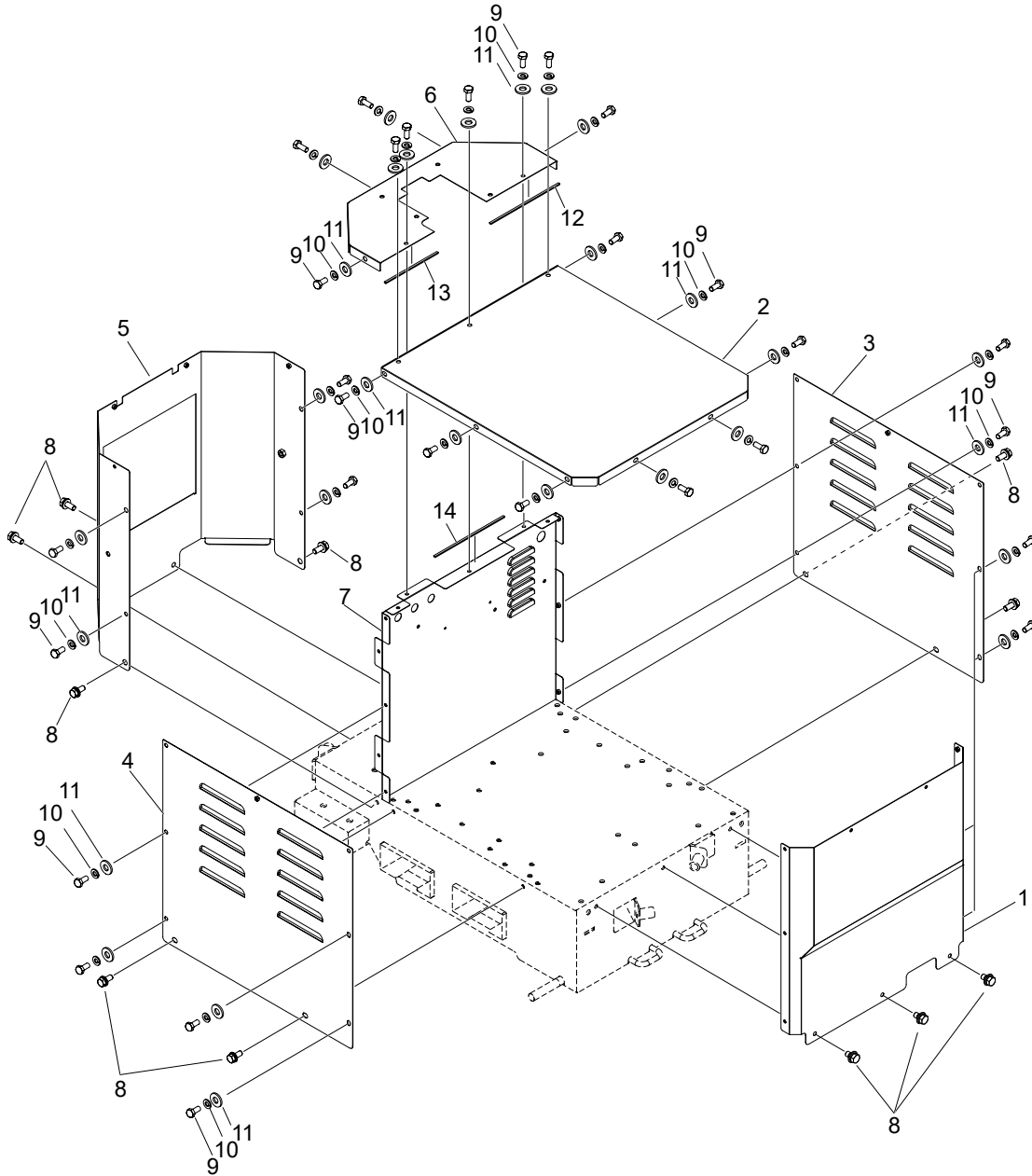
MAST 2 ASSY.



MAST 2 ASSY.

<u>NO.</u>	<u>PART NO.</u>	<u>PART NAME</u>	<u>QTY.</u>	<u>REMARK</u>
1	A300360600	BRACKET, FOURTH MAST	1	
2	0025008016	COUNTERSUNK SCREW M8X16	4.....	APPLY MEDIUM ADHESIVE
3	0043108000	WASHER M8	5	
4	A400555502	STOPPER, MAST	1	
5	0027205012	SCREW M5X12	2.....	APPLY BLUE LOCTITE 242
6	0027205008	SCREW M5X8	24.....	APPLY BLUE LOCTITE 242
7	A400333600	BRACKET, WIRE	3	
8	A300447705	SECOND MAST.....	1.....	INCLUDES ITEMS W/#
9	A300284501	BRACKET 2, PULLEY	2	
10	A400285200	WASHER, PULLEY	4	
11	A400333800	PULLEY	2	
12	0025006012	COUNTERSUNK SCREW M6X12	8.....	WITH LOCK TIGHT
13	A400431000	BRACKET 4, CABLE	1	
14	A400434000	BOLT, CABLE	4	
15	A400431100	BRACKET 5, CABLE	1	
16#	A300448002	THIRD MAST	1	
17#	A300448102	FOURTH MAST	1	
18	A400427300	PLATE, SLIDER 2-2	2	
19	A400333402	PLATE, SLIDER 2-1	2	
20	0027106018	COUNTERSUNK SCREW M6X18	4.....	APPLY MEDIUM ADHESIVE
21	A400549702	WIRE ROPE 3, GREY	1	
22	A400549502	WIRE ROPE 2, BLUE	1	
23	A400549402	WIRE ROPE, 1 YELLOW	1	
24	0033808000	HARDLOCK NUT M8	1	
25#	A400563302	SLIDER.....	29.....	APPLY STRONG ADHESIVE
26	A200174805	ADAPTER	1	
27	0011608020	FLANGE BOLT M8X20	16.....	APPLY BLUE LOCTITE 242 TIGHTENING TORQUE: 13 N•m

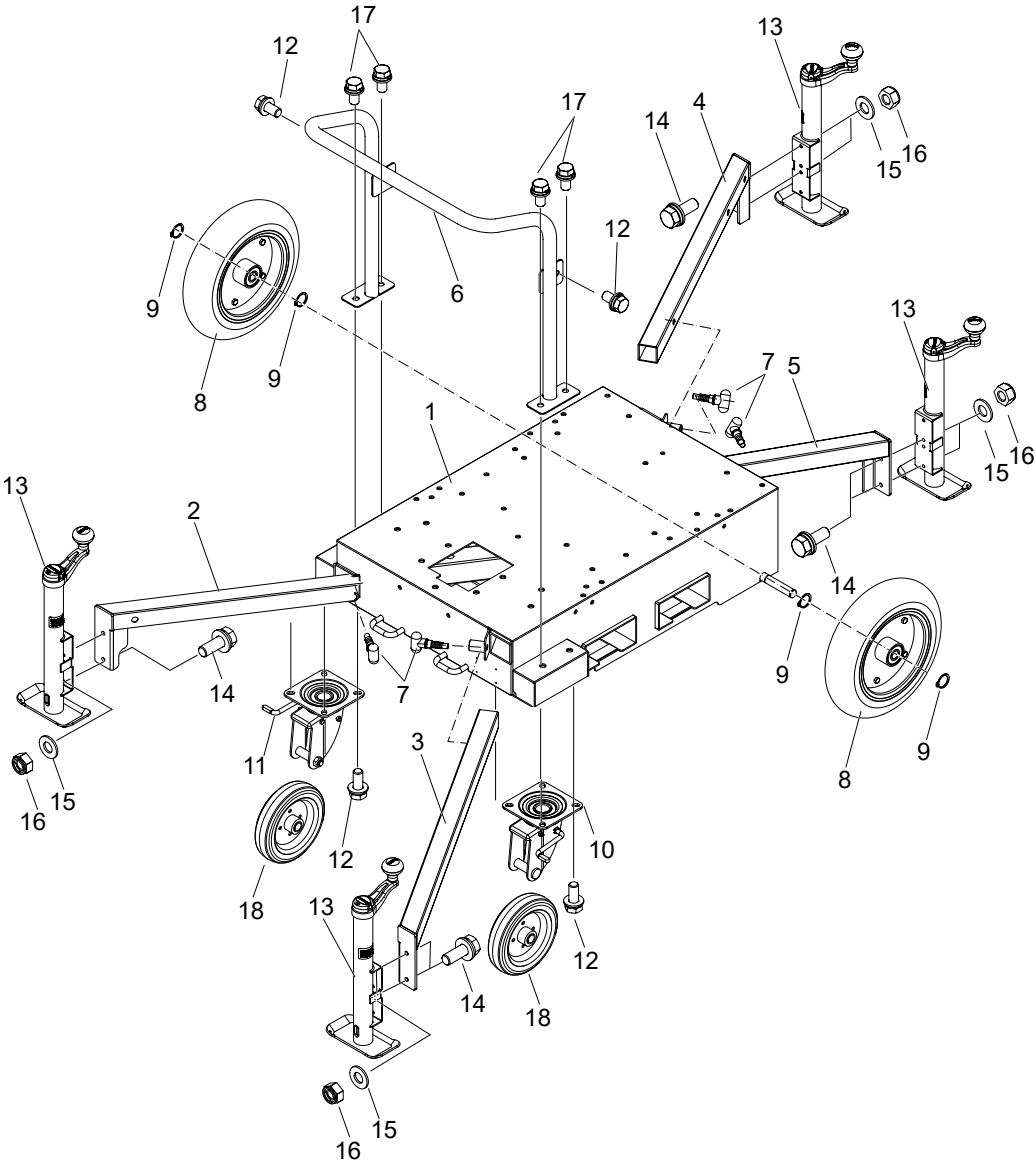
COVER ASSY.



COVER ASSY.

<u>NO.</u>	<u>PART NO.</u>	<u>PART NAME</u>	<u>QTY.</u>	<u>REMARK</u>
1	A200173902	FRONT COVER	1	
2	A200195200	FRONT TOP COVER	1	
3	A100196601	REAR SIDE COVER, LEFT	1	
4	A100196501	REAR SIDE COVER, RIGHT	1	
5	A100196800	REAR COVER	1	
6	A100196700	REAR TOP COVER	1	
7	A300466504	PLATE, EV FRONT	1	
8	0012508015	BOLT AND WASHER ASSY. M8X15	11	
9	0013306015	BOLT M6X15	29	
10	0044006000	WASHER, LOCK M6	29	
11	E000290100	WASHER, FLAT M6	29	
12	A400593400	PACKING 230, L=9", 230 MM	1	
13	A400593300	PACKING 175, L=7", 175 MM	1	
14	A400593500	PACKING 232, L=9.1", 232 MM	1	

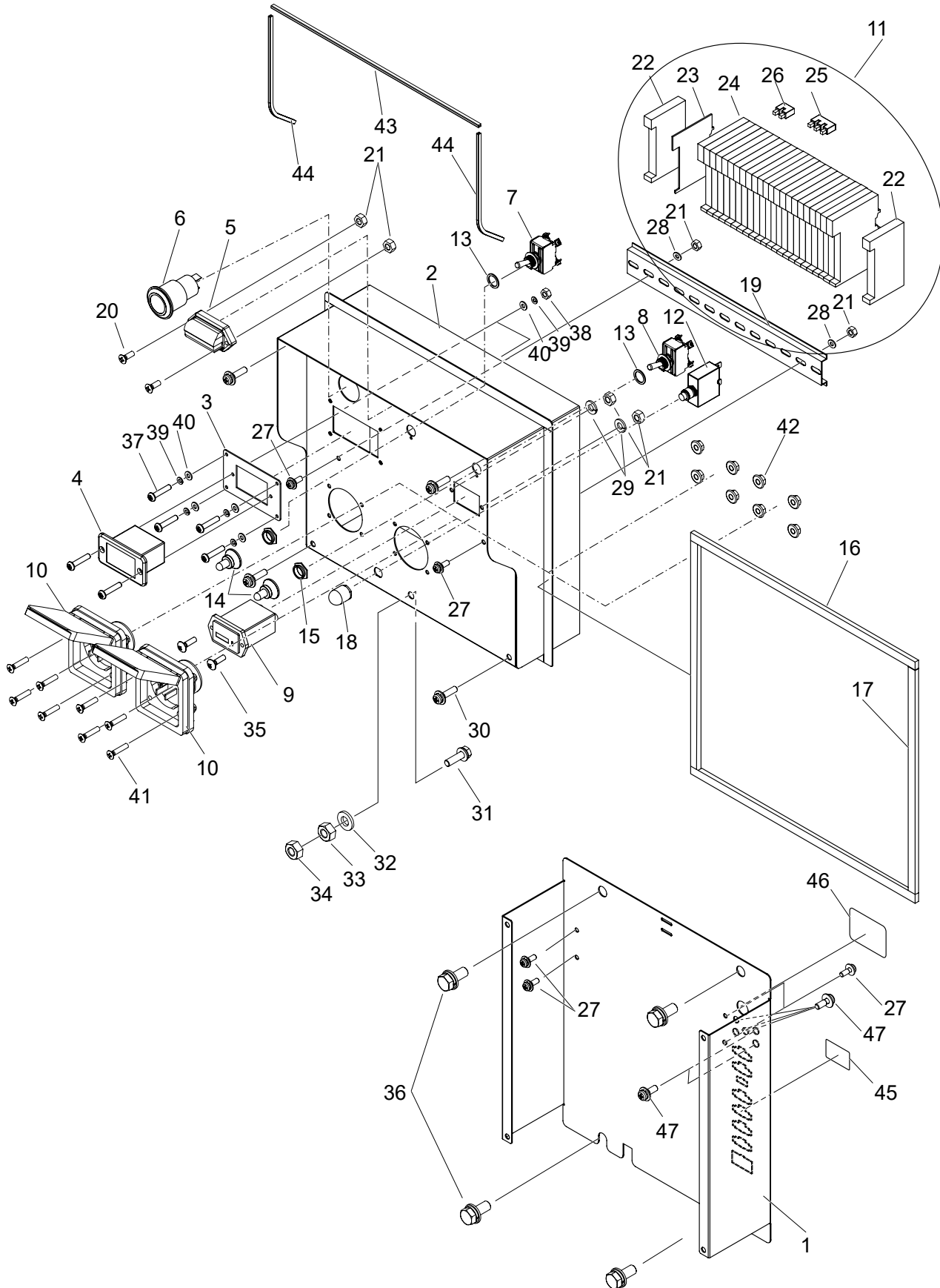
BASE ASSY.



BASE ASSY.

<u>NO.</u>	<u>PART NO.</u>	<u>PART NAME</u>	<u>QTY.</u>	<u>REMARKS</u>
1	A100190802	BASE	1	
2	A100178602	OUTRIGGER, LEFT REAR	1	
3	A100178701	OUTRIGGER, RIGHT REAR	1	
4	A100178801	OUTRIGGER, LEFT FRONT	1	
5	A100178901	OUTRIGGER, RIGHT FRONT	1	
6	A200172605	PIPE HANDLE	1	
7	E000256200	PULL PIN	4	
8	E000279700	TIRE, FRONT SOLID, DIA. 13.8 IN./350 MM	2	
9	0040720000	SNAP RING	4	
10	E000285100	CASTER W/BRAKE, RIGHT.....	1.....	W/O WHEEL
11	E000285200	CASTER W/BRAKE, LEFT.....	1.....	W/O WHEEL
12	0012510025	BOLT AND WASHER ASSY., M10X25	10	
13	E000267800	JACKSTAND	4	
14	0012508022	BOLT AND WASHER ASSY., M8X22.....	8.....	APPLY RED LOCTITE 262
15	0044108000	WASHER M8	8	
16	0035608000	SELF LOCK NUT M8	8	
17	0012512025	BOLT AND WASHER ASSY. M12X25	4	
18	E000278400	WHEEL, SOLID, DIA. 7.9 IN./200 MM	2	

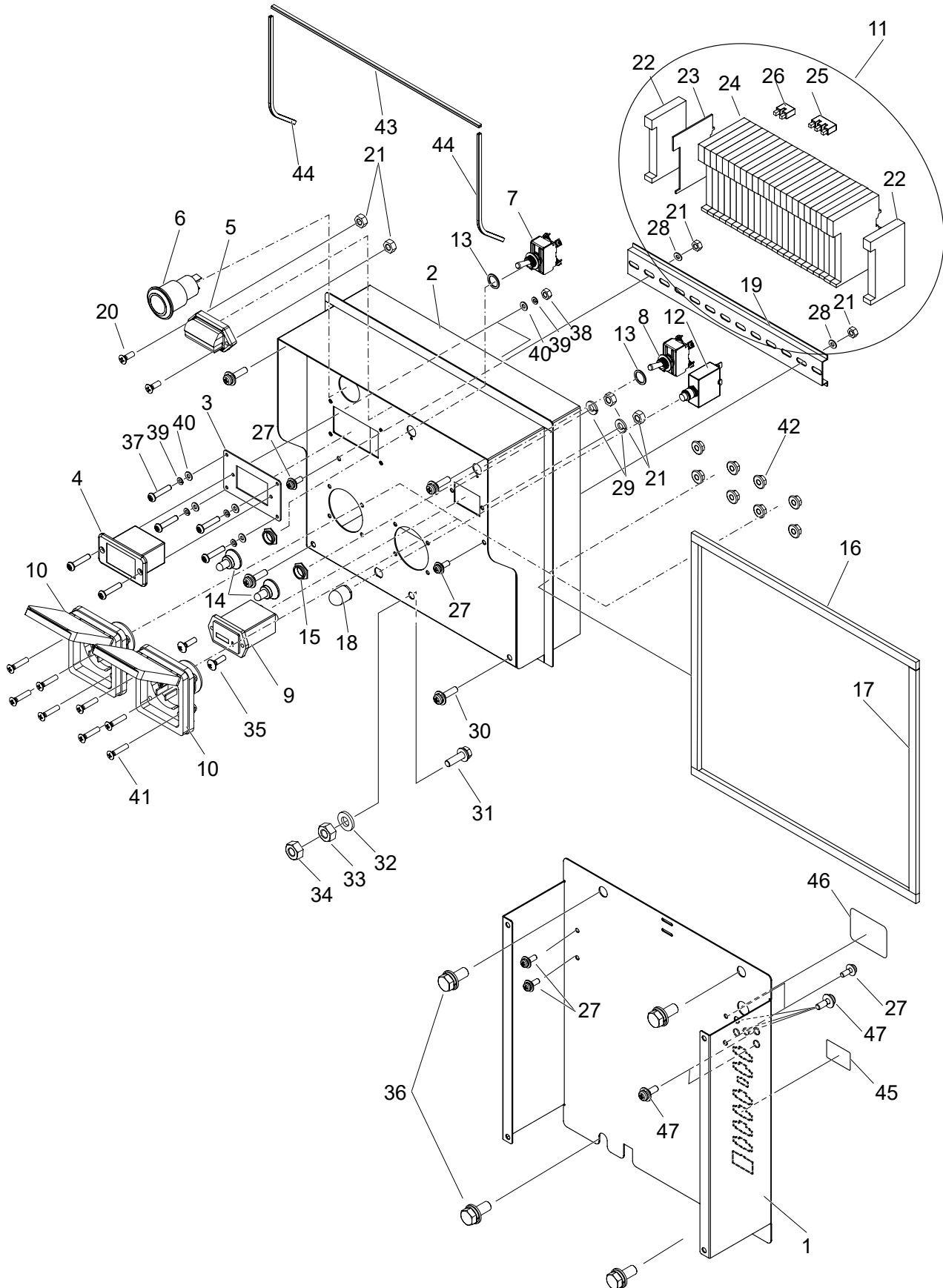
CONTROL BOX ASSY.



CONTROL BOX ASSY.

<u>NO.</u>	<u>PART NO.</u>	<u>PART NAME</u>	<u>QTY.</u>	<u>REMARKS</u>
1	A200195101	CONTROL BOX, PANEL 1.....	1.....	INCLUDES ITEMS W/\$
2	A200193304	CONTROL BOX EV US, PANEL 2	1	
3	A400582600	GAUGE PLATE, RIGHT	1	
4	E000284900	GAUGE METER, BATTERY	1	
5	A300473800	PANEL LIGHT AND INDICATOR W/CABLES	1	
6	A400595800	MOMENTARY PUSH BUTTON SWITCH	1	
7	E000153400	TOGGLE SWITCH, LIGHTING UNIT	1	
8	E000191500	TOGGLE SWITCH, DIMMING	1	
9	A300473600	HOUR METER W/CABLE	1	
10	E000285600	INLET, W/SCREW AND NUT.....	2.....	APPLY LOCTITE
11	A300473500	TERMINAL BLOCK 1.....	1.....	INCLUDES ITEMS W/#
12	A300473700	CIRCUIT BREAKER, 15A.....	1.....	INCLUDES ITEM W/%
13	E000153700	SWITCH WASHER, RUBBER	2	
14	E000153500	SWITCH CAP	2	
15	E000153600	SWITCH NUT	2	
16	A400593000	SEALING PACKING, L=13 IN./325 MM	2	
17	A400593100	SEALING PACKING, L=11 IN./282 MM	2	
18%	E000168900	CAP, CIRCUIT BREAKER	1	
19#	A300449500	DIN RAIL L=10 IN./255 MM	1	
20	0027904012	OVAL HEAD SCREW, M4X12	2.....	APPLY BLUE LOCTITE 242
21	0031204000	NUT, M4.....	6.....	APPLY THREE BOND 1401B
22#	E000185100	TERMINAL END STOPPER	2	
23#	E000184400	END PLATE	1	
24#	E000184600	TERMINAL BLOCK, 15A.....	23.....	W/ MARKERS 1-23
25#	E000212100	TERMINAL BLOCK JUMPER 4-3	1	
26#	E000184000	TERMINAL BLOCK JUMPER 3-2	1	
27	0027304012	BOLT AND WASHER ASSY., M4X12.....	6.....	APPLY BLUE LOCTITE 242
28	0044104000	WASHER, M4	2	
29	0044004000	WASHER, LOCK M4	2	
30	0027305020	BOLT AND WASHER ASSY., M5X20	4	
31	0012506020	BOLT AND WASHER ASSY., M6X20	1	
32	0044106000	WASHER, M6	1	
33	0031206000	NUT, M6.....	1.....	APPLY BLUE LOCTITE 242
34	0031206000	NUT, M6	1	
35	0023504015	PAN HEAD SCREW, M4X15	2	

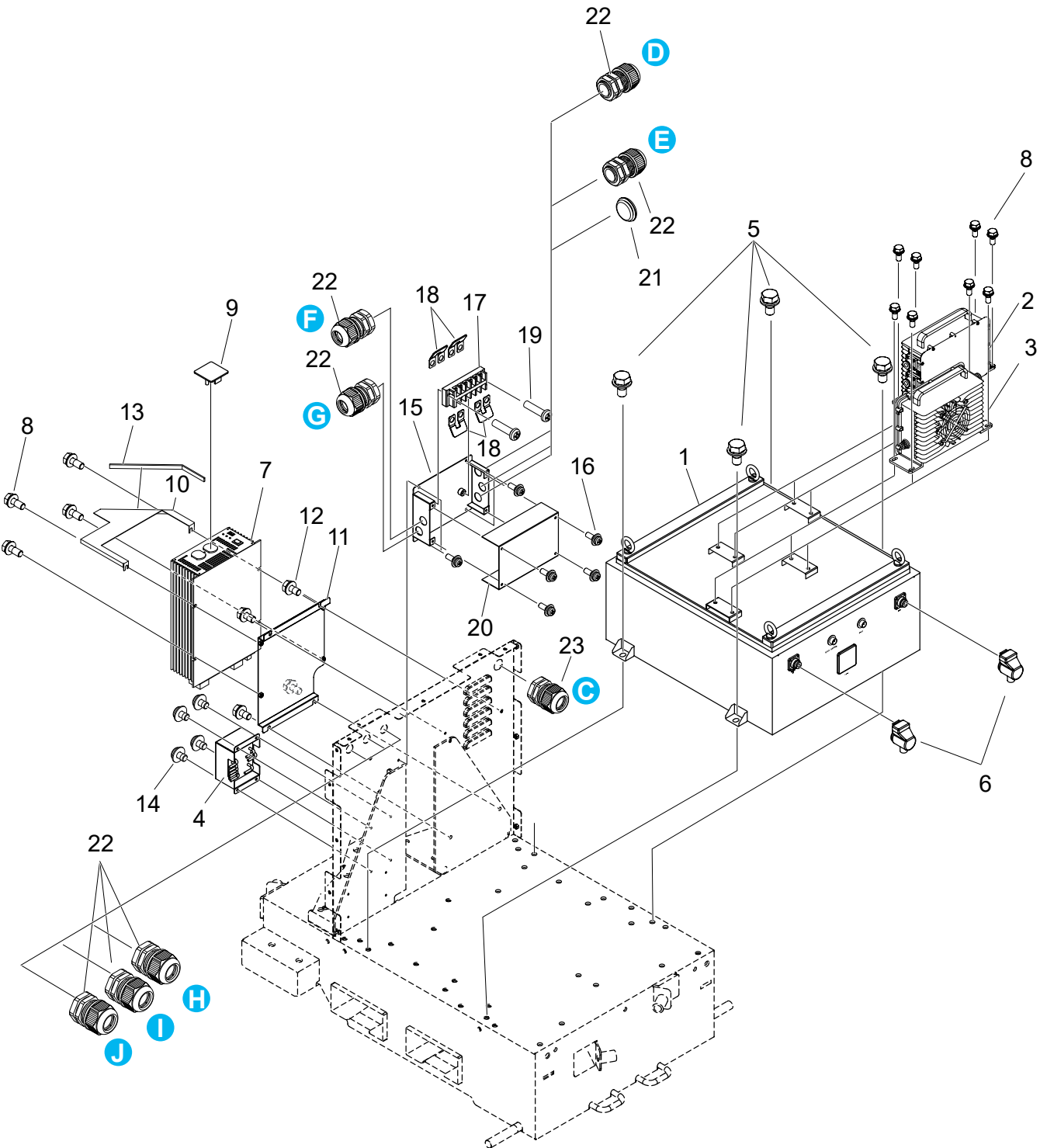
CONTROL BOX ASSY. (CONT'D.)



CONTROL BOX ASSY. (CONT'D.)

<u>NO.</u>	<u>PART NO.</u>	<u>PART NAME</u>	<u>QTY.</u>	<u>REMARKS</u>
36	0012508020	BOLT AND WASHER ASSY., M8X20	4	
37	0023503015	PAN HEAD SCREW, M3X15	6	APPLY BLUE LOCTITE 242
38	0031203000	NUT, M3	2	APPLY THREE BOND 1401B
39	0044003000	WASHER, LOCK M3	6	
40	0044103000	WASHER, M3	6	
41	0023404020	OVAL HEAD SCREW, M4X20	8	APPLY BLUE LOCTITE 242
42	0033404000	FLANGE NUT, M4	8	
43	A400593600	TRIM SEAL, TOP L=12 IN./300 MM	1	
44	A400593700	TRIM SEAL, SIDE L=7 IN./170 MM	2	
45\$	A400589500	TRIM SEAL, 20X35, 0.8"X1.4"	1	
46\$	A400554300	TRIM SEAL, 54X35, 2.1"X1.4"	1	
47	0027306010	BOLT AND WASHER ASSY., M6X10	5	

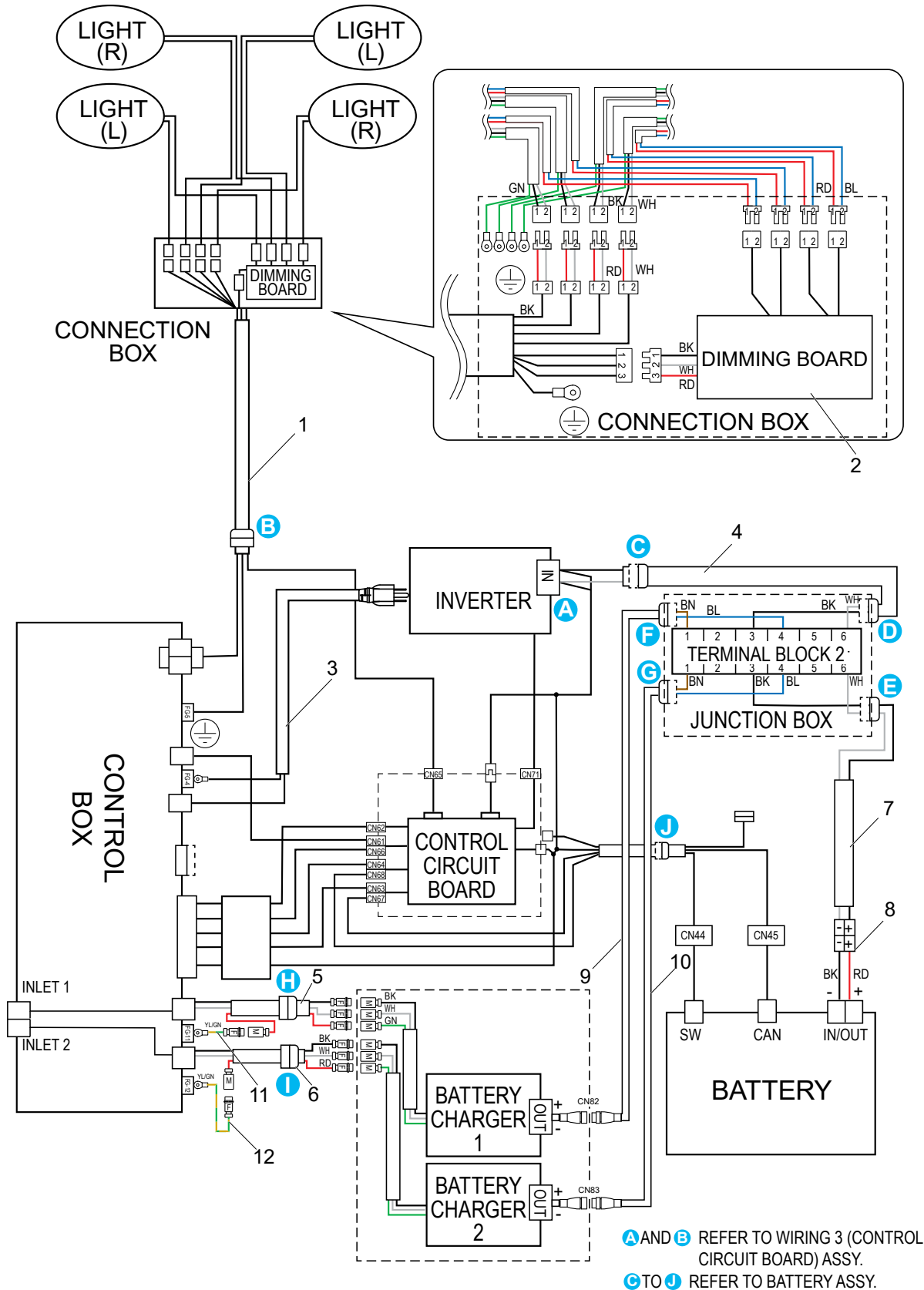
BATTERY ASSY.



BATTERY ASSY.

<u>NO.</u>	<u>PART NO.</u>	<u>PART NAME</u>	<u>QTY.</u>	<u>REMARKS</u>
1	E000289600	BATTERY	1	
2	A300475600	BATTERY CHARGER 1, W/CABLES	1	
3	A300475700	BATTERY CHARGER 2, W/CABLES	1	
4	A300474900	CONTROL, CIRCUIT BOARD ASSY.	1	
5	0012510020	BOLT AND WASHER ASSY. M10X20	4	
6	E000280000	TERMINAL COVER, BATTERY	1.....	1 SET = 1 RED AND 1 BLK.
7	E000283200	INVERTER	1	
8	0012506015	BOLT AND WASHER ASSY. M6X15	12	
9	E000292500	PLUG COVER	1	
10	A200197800	DIVIDER PLATE	1	
11	A200195300	BRACKET, INVERTER	1	
12	0012506010	BOLT AND WASHER ASSY. M6X10	4	
13	A400593200	PACKING, L=9.3", 237 MM	1	
14	0027305008	SCREW AND WASHER M5X8	4	
15	A200195900	JUNCTION BOX	1	
16	0027304012	SCREW AND WASHER ASSY. M4X12	8	
17	E000289200	TERMINAL BLOCK.....	1.....	INCLUDES ITEM W/#
18#	E000289300	SHORT BAR	4	
19	0023505020	SCREW M5X20	2.....	APPLY BLUE LOCTITE 242
20	A200196000	JUNCTION BOX COVER	1	
21	E000289800	GROMMET, W/FILM	1	
22	E000290700	CABLE GLAND	7	
23	E000288900	CABLE GLAND	1	

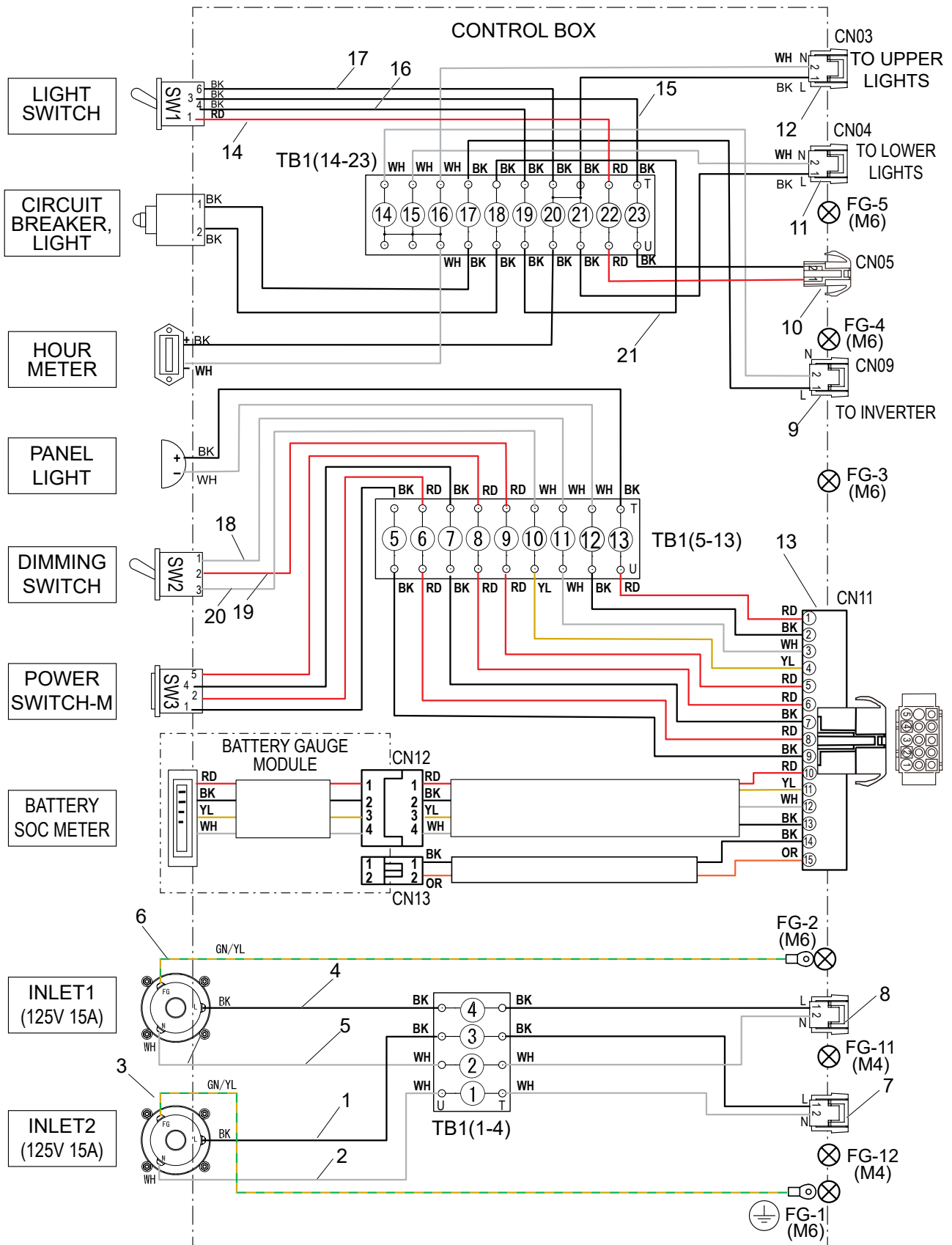
WIRING 1 (BLOCK DIAGRAM) ASSY.



WIRING 1 (BLOCK DIAGRAM) ASSY.

<u>NO.</u>	<u>PART NO.</u>	<u>PART NAME</u>	<u>QTY.</u>	<u>REMARKS</u>
1	A200197102	LAMP CABLE, US BATT	1	
2	A300474800	DIMMING BOARD ASSY.	1	
3	A300474200	POWER CABLE, INVERTER	1	
4	A300474100	INVERTER POWER FEED CABLE	1	
5	A300472500	CHARGER 1 CABLE	1	
6	A300472600	CHARGER 2 CABLE	1	
7	A300474500	DC IN/OUT RELAY CABLE, BATTERY 1	1	
8	A300474600	DC IN/OUT CABLE, BATTERY 1	1	
9	A300475400	DC RELAY CABLE (CHARGER 1)	1	
10	A300475500	DC RELAY CABLE (CHARGER 2)	1	
11	A400587900	WIRE (CHARGER 1 FG)	1.....	TO FG.11
12	A400588000	WIRE (CHARGER 2 FG)	1.....	TO FG.12

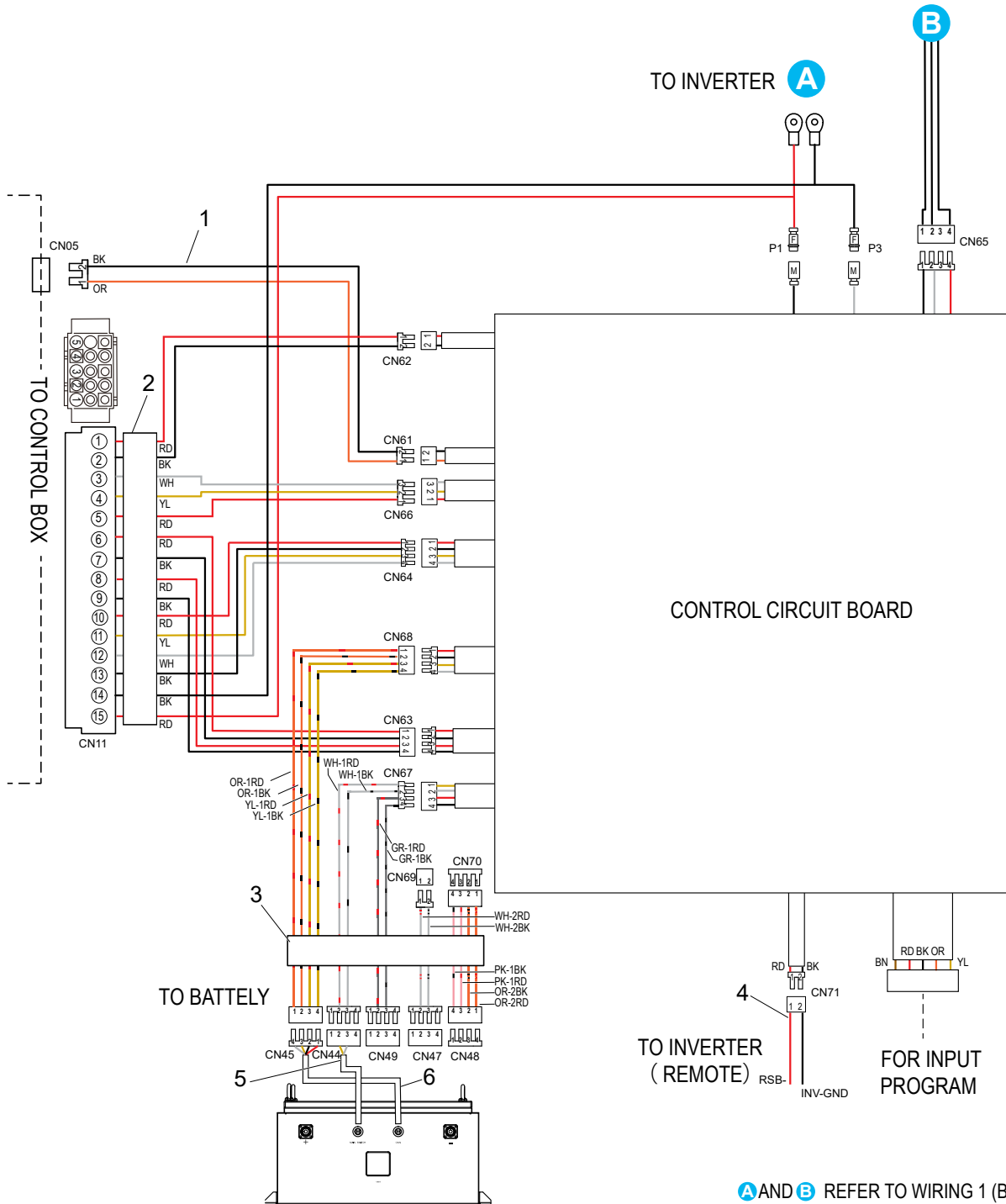
WIRING 2 (CONTROL BOX) ASSY.



WIRING 2 (CONTROL BOX) ASSY.

<u>NO.</u>	<u>PART NO.</u>	<u>PART NAME</u>	<u>QTY.</u>	<u>REMARKS</u>
1	A400587600	WIRE, INLET2-L_TB1-3U	1	
2	A400587700	WIRE, INLET2-N_TB1-1U	1	
3	A400587800	WIRE, INLET2-FG_FG-1	1	
4	A400587300	WIRE, INLET1-L_TB1-4U	1	
5	A400587400	WIRE, INLET1-N_TB1-2U	1	
6	A400587500	WIRE, INLET1-FG_FG-2	1	
7	A300472400	CHARGER 2 POWER FEED CABLE	1	
8	A300472300	CHARGER 1 POWER FEED CABLE	1	
9	A300472200	INVERTER CABLE	1	
10	A400588400	LIGHTING ON/OFF CONFIRM. CABLE 1	1	
11	A300472100	LIGHTING LOWER POWER FEED CABLE	1	
12	A300472000	LIGHTING UPPER POWER FEED CABLE	1	
13	A200197500	CONTROL SIGNAL RELAY CABLE 1	1	
14	A400588500	WIRE, TB1-22T_SW1-1	1	
15	A400588600	WIRE, TB1-23T_SW1-3	1	
16	A400586600	WIRE, TB1-19T_SW1-4	1	
17	A400586700	WIRE, TB1-20T_SW1-6	1	
18	A400586800	WIRE, TB1-11T_SW2-1	1	
19	A400587000	WIRE, TB1-9T_SW2-2	1	
20	A400586900	WIRE, TB1-10T_SW2-3	1	
21	A400588700	WIRE, TB1-18T_TB1-19U	1	

WIRING 3 (CONTROL CIRCUIT BOARD) ASSY.



WIRING 3 (CONTROL CIRCUIT BOARD) ASSY.

<u>NO.</u>	<u>PART NO.</u>	<u>PART NAME</u>	<u>QTY.</u>	<u>REMARKS</u>
1	A300473900	LIGHTING ON/OFF CONFIRM. CABLE 2	1	
2	A200197400	CONTROL SIGNAL RELAY CABLE 2	1	
3	A200197000	BATTERY SIGNAL RELAY CABLE	1	
4	A400589400	INVERTER REMOTE CABLE	1	
5	A400595700	CABLE, BATTERY 1 SWITCH CUSTOM	1	
6	A300477200	SOC METER CABLE, BATTERY 1	1	

PARTS MANUAL

HERE'S HOW TO GET HELP

PLEASE HAVE THE MODEL AND SERIAL
NUMBER ON-HAND WHEN CALLING

UNITED STATES

Multiquip Inc.

(310) 537- 3700
6141 Katella Avenue Suite 200
Cypress, CA 90630
E-MAIL: mq@multiquip.com
WEBSITE: www.multiquip.com

CANADA

Multiquip

(450) 625-2244
4110 Industriel Boul.
Laval, Quebec, Canada H7L 6V3
E-MAIL: infocanada@multiquip.com

UNITED KINGDOM

Multiquip (UK) Limited Head Office

0161 339 2223
Unit 2, Northpoint Industrial Estate, Globe Lane,
Dukinfield, Cheshire SK16 4UJ
E-MAIL: sales@multiquip.co.uk

© COPYRIGHT 2024, MULTIQUIP INC.

Multiquip Inc, the MQ logo are registered trademarks of Multiquip Inc. and may not be used, reproduced, or altered without written permission. All other trademarks are the property of their respective owners and used with permission.

This manual MUST accompany the equipment at all times. This manual is considered a permanent part of the equipment and should remain with the unit if resold.

The information and specifications included in this publication were in effect at the time of approval for printing. Illustrations, descriptions, references and technical data contained in this manual are for guidance only and may not be considered as binding. Multiquip Inc. reserves the right to discontinue or change specifications, design or the information published in this publication at any time without notice and without incurring any obligations.

