



LD6 Ride-On Trowel

EZ Mover Kit Installation Instructions

The following instructions are intended to assist the user with the installation of the EZ Mover Kit for use on an MQ Whiteman Ride-On Trowel model LD6. Please read all assembly instructions before installing the kit.

REQUIRED TOOLS

- 16 mm and 3/4 in. wrench or socket

PARTS

Verify that all parts are accounted for. See Table 1 and Figure 1.

Table 1. LD6 EZ Mover Kit				
Item	Part No.	Description	Qty.	Remarks
1	LD6EZM	Kit, EZ Mover, LD6	1	Includes items 2–15
2	45700	Assembly, EZ Mover, LD6	2	Includes items 3–14
3	45708	Lift Bracket, EZ Mover	2	
4	2549	Screw, HHC 1/2-13 x 3"	2	
5	10176	Nut, Nyloc 1/2-13	4	
6	12402	Screw, HHC 1/2-13 x 2-1/2"	2	
7	45705	Jack, EZ Mover, LD6	2	
8	16743	Pin, Section Safety Snap 3/8" Dia.	4	
9	N/A	Assembly, Wheel Plate, Pre-Assembled	2	Includes items 10–14
10	45701	Caster Plate, EZ Mover, LD6	2	
11	45711	Wheel Caster, Cushioned Load, 4"	4	
12	42353	Nut, Hex, Serrated-Flange, M10-1.5	16	
13	45712	Caster Wheel Lock, EZ Mover	2	
14	32976	Screw, HFS M10-1.5 x 25	16	
15	45719	Instructions, LD6 EZ Mover Kit	1	

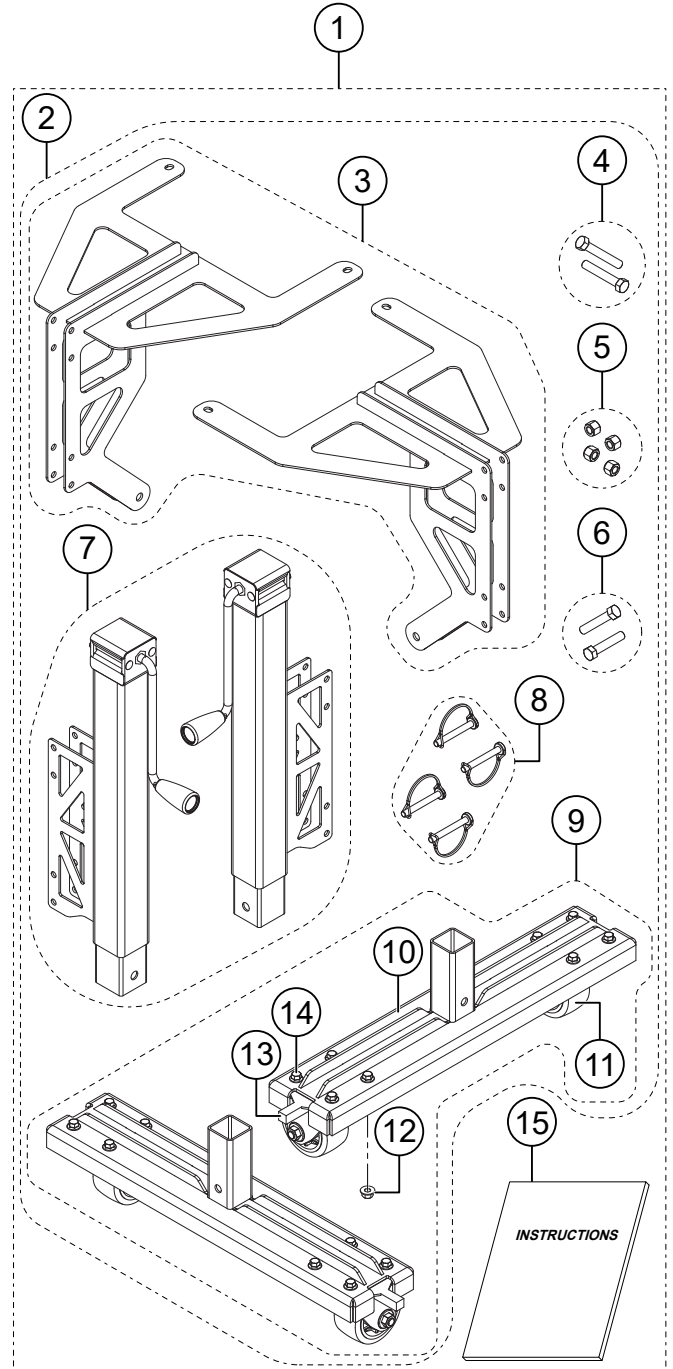


Figure 1. LD6 EZ Mover Kit

WORK SAFELY!

Only a **qualified service technician** with proper training should perform this installation. Follow all shop safety rules while performing this installation.

PREPARATION

1. Place the trowel on a secure, level surface in an area free of dirt and debris.
2. Make sure the trowel is turned **OFF** and the engine is cool.
3. Disconnect the negative (**BLACK**) battery cable from the negative (-) terminal on the battery.

PROCEDURE

1. Remove the two outer hex flange bolts (Figure 2) securing the left-side trunnion to the left-side deck plate. Keep the bolts for later.

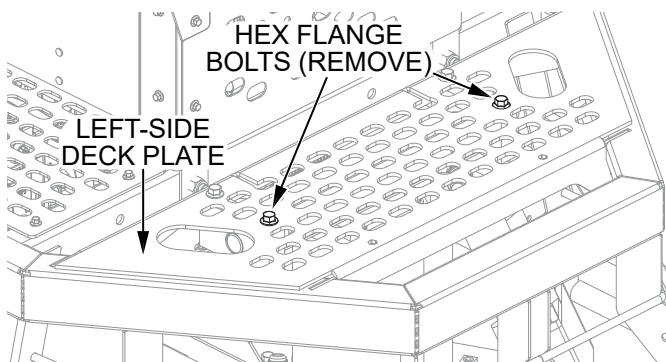


Figure 2. Remove Two Hex Flange Bolts

2. Remove and discard the bolt and nut (Figure 3) securing the left-side steering cylinder to the trowel frame.

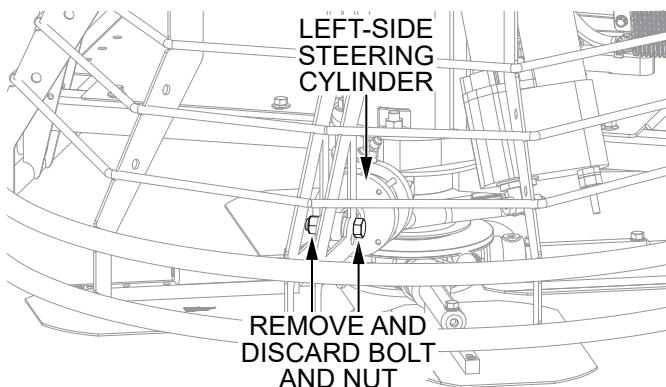


Figure 3. Remove Left-Side Steering Cylinder Hardware

3. Secure a lift bracket (P/N 45708) to the frame and left-side steering cylinder using one 1/2-13 x 2-1/2" hex head screw (P/N 12402), one 1/2-13 nyloc nut (P/N 10176), and the two hex flange bolts that were removed earlier. See Figure 4.

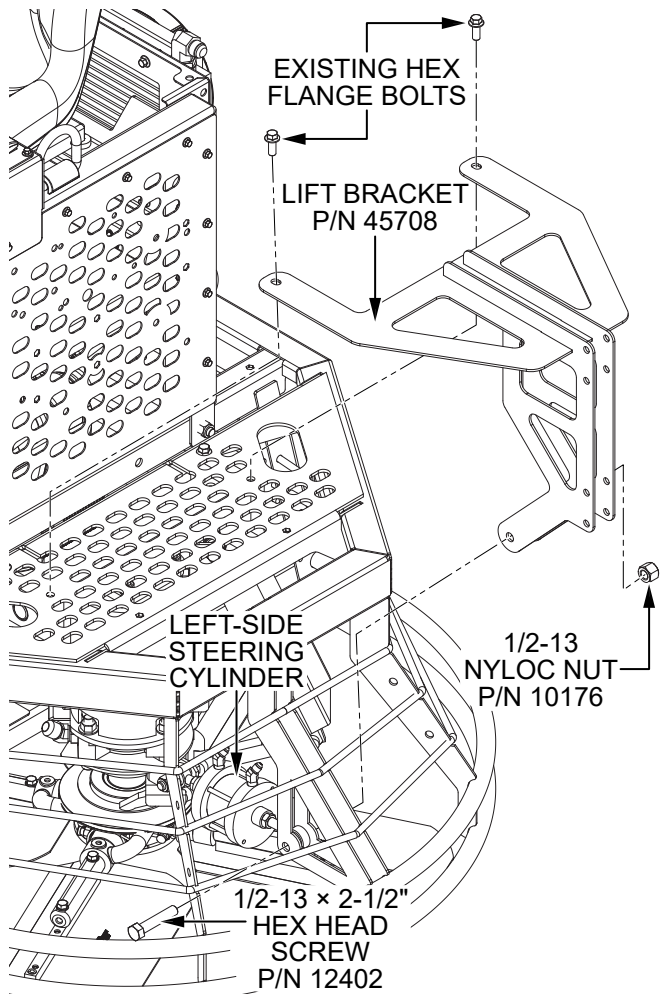


Figure 4. Install Lift Bracket

- Secure a jack (P/N 45705) to the lift bracket (P/N 45708) using two snap pins (P/N 16743). See Figure 5.

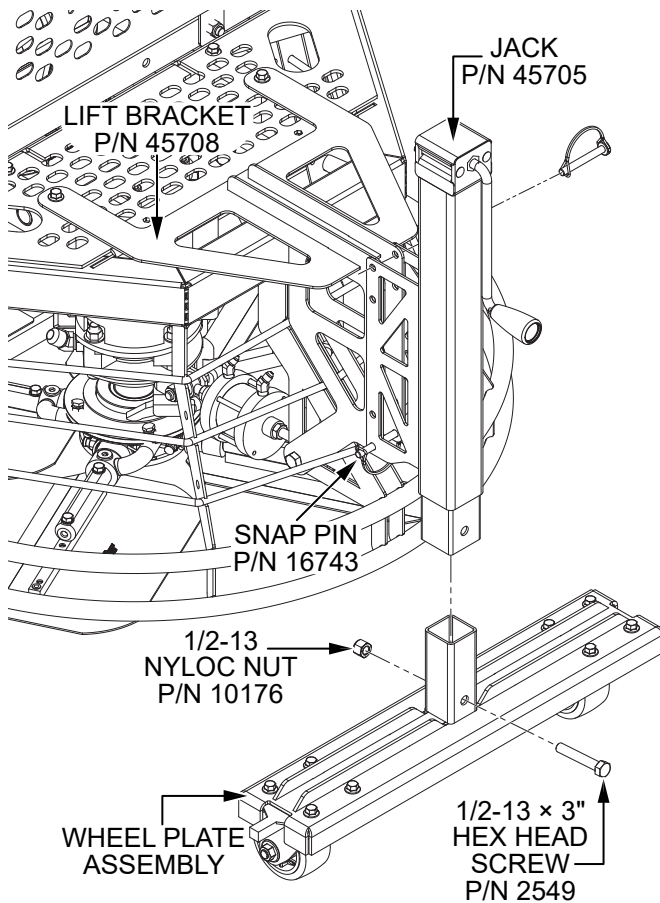


Figure 5. Install Jack and Wheel Plate

- Secure a wheel plate assembly to the jack (P/N 45705) using a 1/2-13 x 3" hex head screw (P/N 2549) and 1/2-13 nyloc nut (P/N 10176). See Figure 5.

- Remove the two outer hex flange bolts (Figure 6) securing the right-side trunnion to the right-side deck plate. It may be necessary to loosen the bolts securing the fuel tank straps to create space for the bolt removal. Keep the bolts for later.

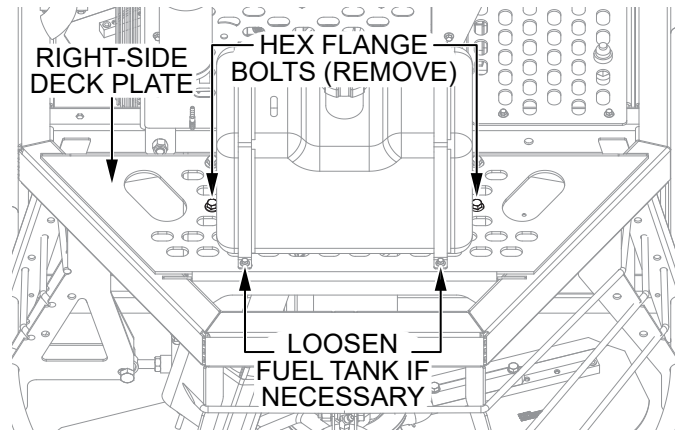


Figure 6. Remove Two Right-Side Trunnion Bolts

- Repeat steps 2–5 on the right side of the trowel.



LD6 Ride-On Trowel

EZ Mover Kit Installation Instructions

HERE'S HOW TO GET HELP

PLEASE HAVE THE MODEL AND SERIAL
NUMBER ON-HAND WHEN CALLING

UNITED STATES

Multiquip Inc.

(310) 537- 3700
6141 Katella Avenue Suite 200
Cypress, CA 90630
E-MAIL: mq@multiquip.com
WEBSITE: www.multiquip.com

CANADA

Multiquip

(450) 625-2244
4110 Industriel Boul.
Laval, Quebec, Canada H7L 6V3
E-MAIL: infocanada@multiquip.com

UNITED KINGDOM

Multiquip (UK) Limited Head Office

0161 339 2223
Unit 2, Northpoint Industrial Estate,
Globe Lane,
Dukinfield, Cheshire SK16 4UJ
E-MAIL: sales@multiquip.co.uk

© COPYRIGHT 2020, MULTIQUIP INC.

Multiquip Inc and the MQ logo are registered trademarks of Multiquip Inc. and may not be used, reproduced, or altered without written permission. All other trademarks are the property of their respective owners and used with permission.

The information and specifications included in this publication were in effect at the time of approval for printing. Illustrations, descriptions, references and technical data contained in this document are for guidance only and may not be considered as binding. Multiquip Inc. reserves the right to discontinue or change specifications, design or the information published in this publication at any time without notice and without incurring any obligations.

Your Local Dealer is:



PN: 45719