



LD6 Ride-On Trowel

Retardant Spray Kit Installation Instructions

The following instructions are intended to assist the user with the installation of the Retardant Spray Kit for use on a Multiquip Ride-On Trowel model LD6. Please read all assembly instructions before installing the kit.

REQUIRED TOOLS

- 7 mm, 10 mm, 16 mm, and 1/2 in. wrench or socket
- Flat screwdriver

PARTS

Verify that all parts are accounted for.
See Figure 1 and Table 1.

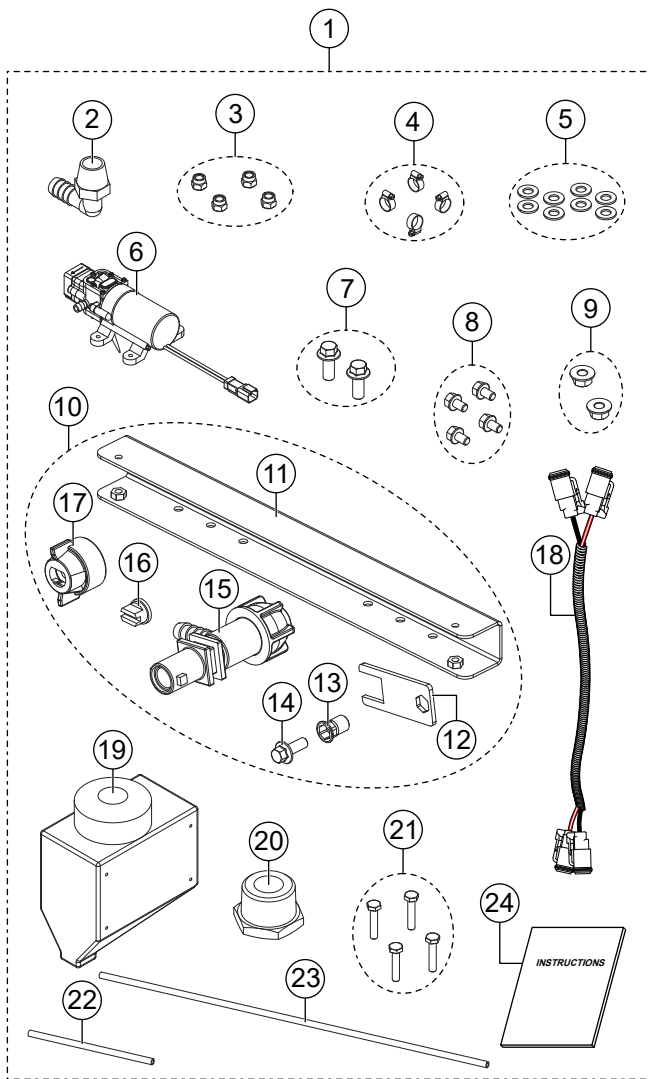


Figure 1. LD6 Retardant Spray Kit

Table 1. LD6 Retardant Spray Kit

Item	Part No.	Description	Qty.	Remarks
1	45475	Spray Kit, Retardant, LD6	1	Includes items 2–24
2	2925	Elbow, 90° 3/8 Barb 3/8 NPT-M	1	
3	15518-004	Nut, Nyloc, M4-.7	4	
4	15538	Clamp, Hose Worm #6	4	
5	28922-058	Washer, M5	8	
6	30560	Pump, Spray, with Fem. Con. Body	1	
7	32976	Screw, HFS M10-1.5 × 25 Class 10.9	2	
8	34002	Screw, HHF 5/16-18 × 1/2, Gr 5	4	
9	42353	Nut, Hex, Serrated-Flange, M10-1.5	2	
10	N/A	Assembly, Bracket/Nozzle, Pre-Assembled	1	Includes items 11–17
11	45477	Bracket W/A, Spray/Edger, LD6	1	
12	45605	Mount, Nozzle Tab, LD6	1	
13	42496	Nut, Blind, Hex, M6-1.0 × 0.7 - 4.2 Grip	1	
14	42542	Screw, HHFS M6-1.0 × 16	1	
15	45472	Nozzle, Teejet Body, Single	1	
16	49247	Spray, Flat Tip Brown	1	
17	45474	Spray Tip, Cap with Gasket	1	
18	45379	Harness, LD6 Spray Kit	1	
19	45200	Tank, 3 Gal. Large Mouth Retardant	1	
20	49333	Fitting, Brass 3/4 MNPT - 3/8 FNPT	1	
21	42894	Screw, HHC M4-0.7 × 20 mm	4	
22	60021	Hose, 3/8 ID × 5/8 OD, Braided PVC	14"	
23	60021	Hose, 3/8 ID × 5/8 OD, Braided PVC	44"	
24	45717	Instructions, Spray Kit, LD6	1	
25	N/A	Tie, Cable	As needed	Source locally

WORK SAFELY!

Only a **qualified service technician** with proper training should perform this installation. Follow all shop safety rules while performing this installation.

PREPARATION

1. Make sure the trowel is turned **OFF** and the engine is cool.
2. Disconnect the negative (**BLACK**) battery cable from the negative (-) terminal on the battery.

RETARDANT TANK INSTALLATION

1. The brass fitting (P/N 49333) comes pre-installed onto the bottom of the retardant tank (P/N 45200). Connect the 90-degree elbow (P/N 2925) to the brass fitting (P/N 49333) but **DO NOT** tighten it yet. See Figure 2.

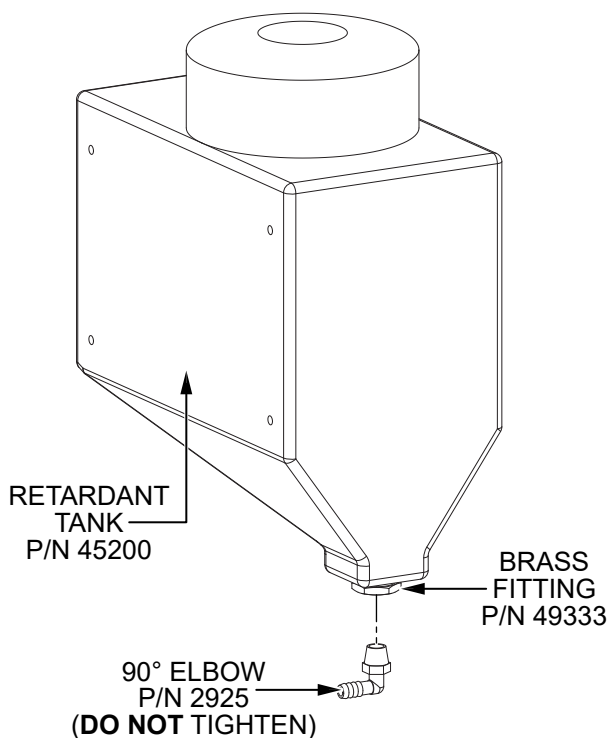


Figure 2. Install 90-Degree Elbow

2. Tilt the operator's seat forward (Figure 3).

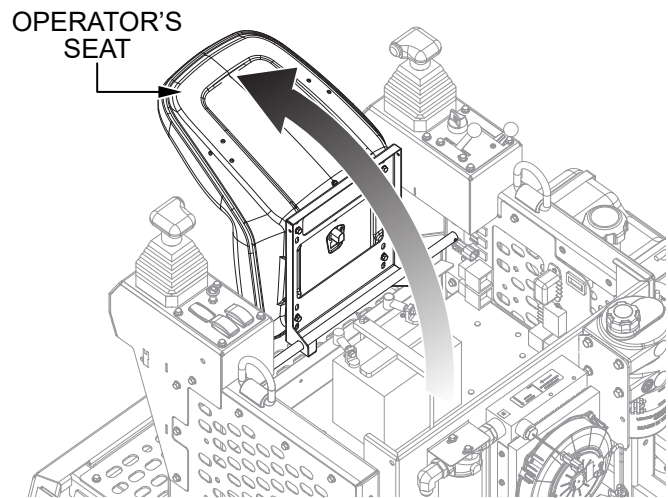


Figure 3. Tilt Operator's Seat Forward

3. Secure the retardant tank (P/N 45200) to the trowel frame using four 5/16-18 x 1/2" hex flange screws (P/N 34002). See Figure 4.

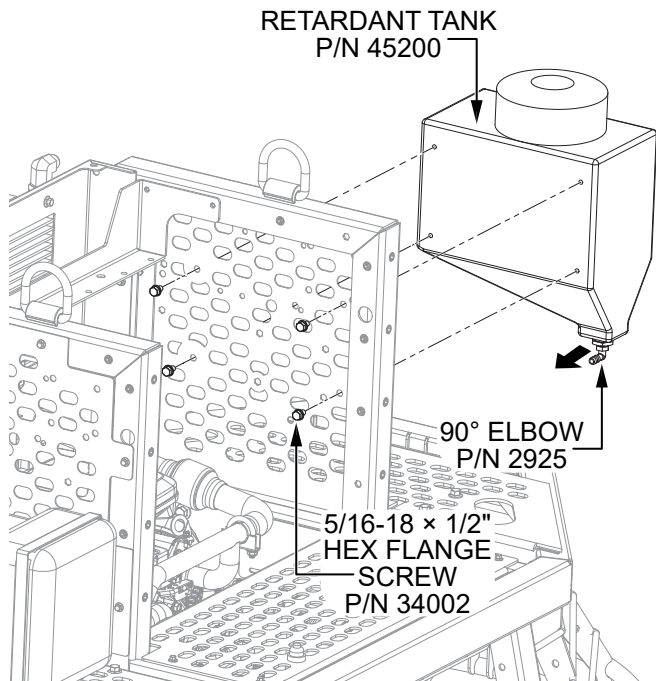


Figure 4. Install Retardant Tank

4. Once the tank has been installed, securely tighten the 90-degree elbow (P/N 2925). Make sure the elbow is pointing in the correct direction (in toward the machine) as shown in Figure 4.

SPRAY PUMP INSTALLATION

Secure the spray pump (P/N 30560) to the trowel frame using four hex head screws (P/N 42894), eight washers (P/N 28922-058) and four nyloc nuts (P/N 15518-004). See Figure 5.

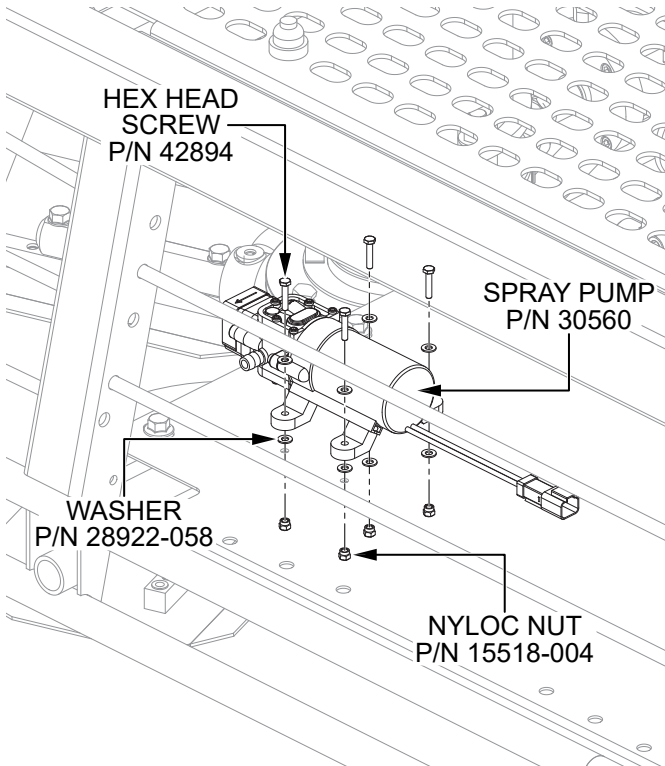


Figure 5. Install Spray Pump

SPRAY BRACKET INSTALLATION

Secure the spray bracket assembly to the frame using two M10-1.5 x 25 hex flange screws (P/N 32976) and two M10-1.5 serrated-flange hex nuts (P/N 42353). See Figure 6.

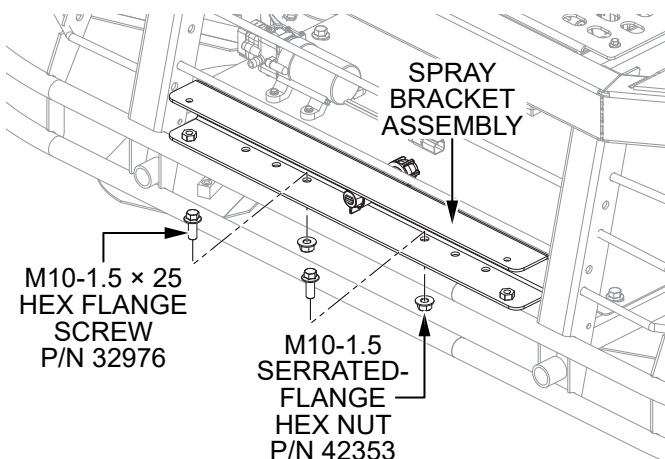


Figure 6. Install Spray Bracket Assembly

HOSE CONNECTIONS

1. Use a worm clamp (P/N 15538) to secure one end of the 44-inch hose (P/N 60021) to the 90-degree elbow (P/N 2925) at the bottom of the retardant tank (P/N 45200). See Figure 7.

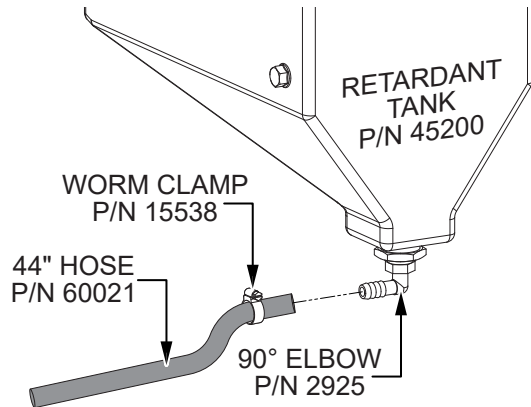


Figure 7. Connect Retardant Tank Hose

2. Use a worm clamp (P/N 15538) to secure the opposite end of the 44-inch hose (P/N 60021) to the inlet on the spray pump (P/N 30560). See Figure 8.

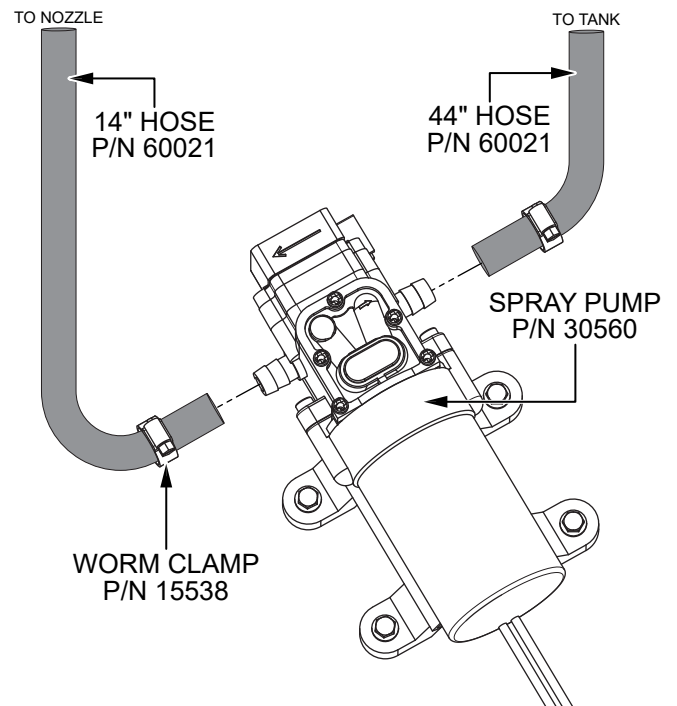


Figure 8. Connect Spray Pump Hoses

3. Use a worm clamp (P/N 15538) to secure one end of the 14-inch hose (P/N 60021) to the outlet on the spray pump (P/N 30560). See Figure 8.

- Use a worm clamp (P/N 15538) to secure the opposite end of the 14-inch hose (P/N 60021) to the spray nozzle (P/N 45472). See Figure 9.

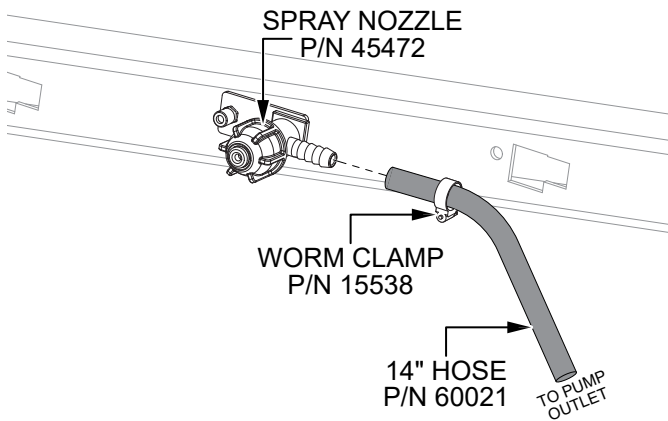


Figure 9. Connect Spray Nozzle Hose

WIRING HARNESS INSTALLATION

- With the operator's seat tilted forward, locate the electrical panel (Figure 10).

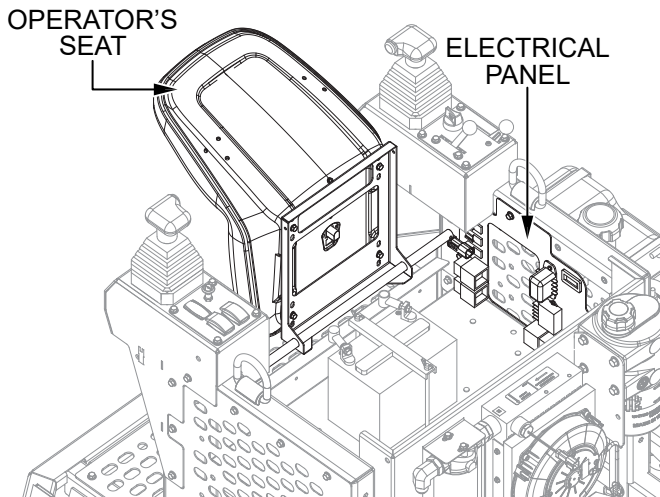


Figure 10. Locate Electrical Panel

- Remove the cap from the accessory power jack on the electrical panel and set it aside (Figure 11).

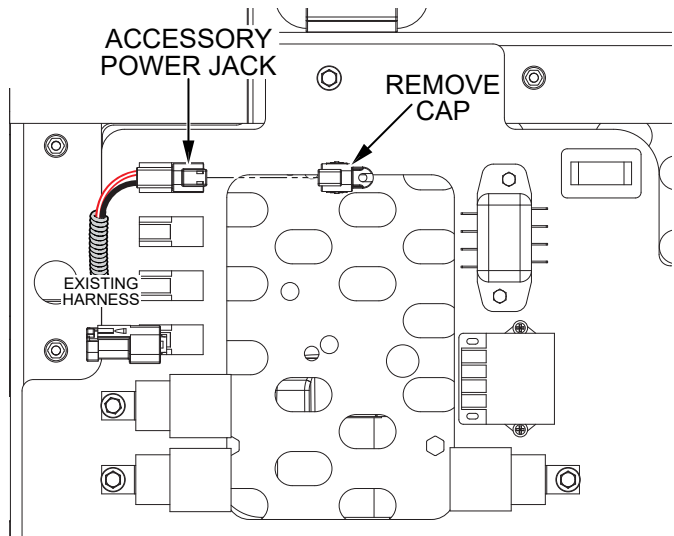


Figure 11. Remove Accessory Power Jack Cap

- Plug connector P1 from the spray kit wiring harness (P/N 45379) into the accessory power jack. See Figure 12.

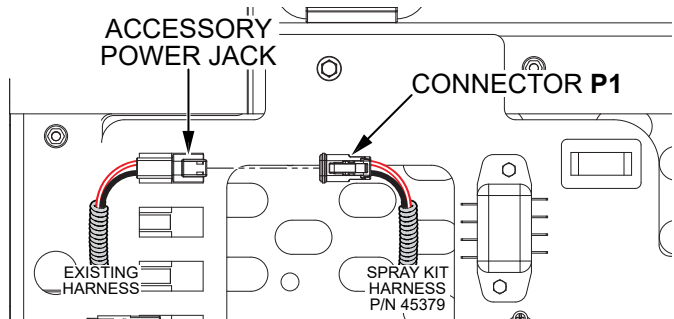


Figure 12. Connect Spray Kit Harness to Accessory Power Jack

- From the electrical panel, run the spray kit wiring harness (P/N 45379) straight back to the cross seat brace, along the cross seat brace to the other side of the machine, then forward to the left-side control panel. Use cable ties to secure the harness to the cross seat brace. See Figure 13.

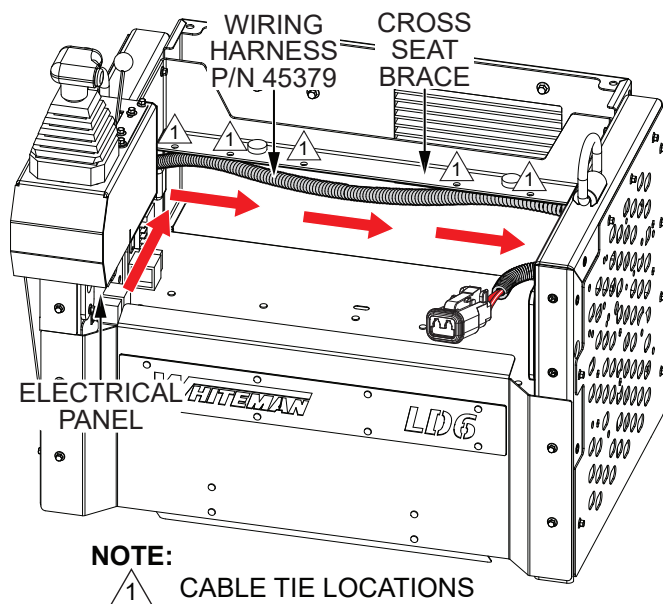


Figure 13. Install Wiring Harness

- Plug connector P2 from the spray kit wiring harness (P/N 45379) into the right-side steering valve. Plug connector P3 from the wiring harness into the left-side steering valve. See Figure 14.

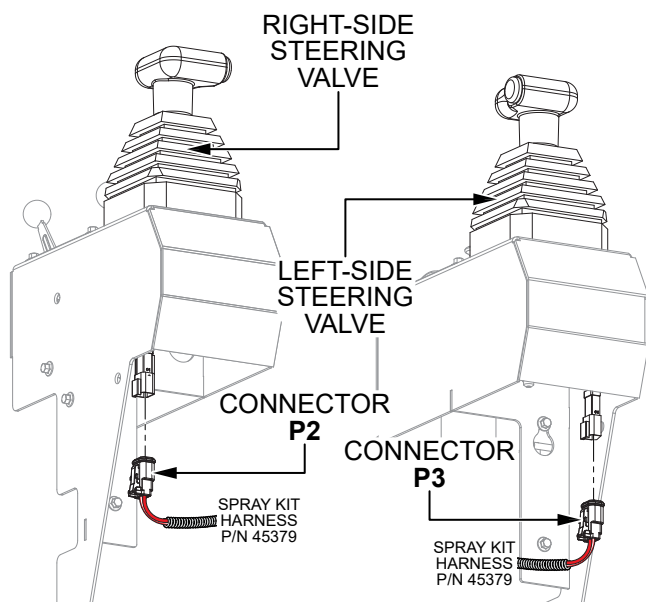


Figure 14. Connect Steering Valves

- Plug connector P4 from the spray kit wiring harness (P/N 45379) into the spray pump (P/N 30560). See Figure 15.

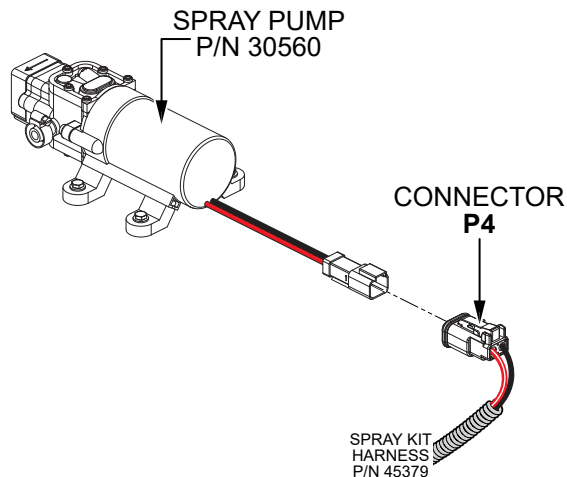


Figure 15. Connect Spray Pump

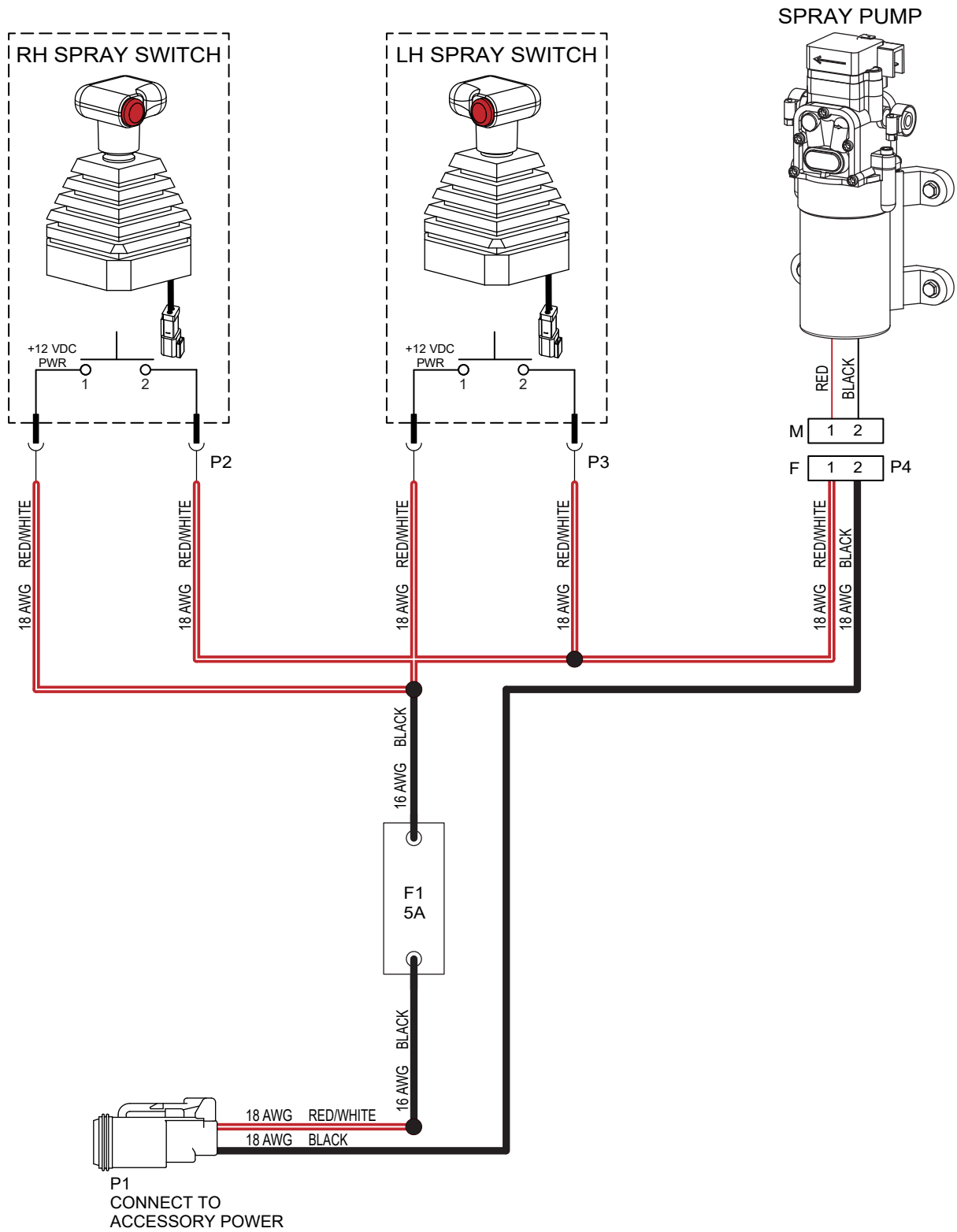


Figure 16. Wiring Diagram



LD6 Ride-On Trowel

Retardant Spray Kit Installation Instructions

HERE'S HOW TO GET HELP

PLEASE HAVE THE MODEL AND SERIAL
NUMBER ON-HAND WHEN CALLING

UNITED STATES

Multiquip Inc.

(310) 537- 3700
6141 Katella Avenue Suite 200
Cypress, CA 90630
E-MAIL: mq@multiquip.com
WEBSITE: www.multiquip.com

CANADA

Multiquip

(450) 625-2244
4110 Industriel Boul.
Laval, Quebec, Canada H7L 6V3
E-MAIL: infocanada@multiquip.com

UNITED KINGDOM

Multiquip (UK) Limited Head Office

0161 339 2223
Unit 2, Northpoint Industrial Estate,
Globe Lane,
Dukinfield, Cheshire SK16 4UJ
E-MAIL: sales@multiquip.co.uk

© COPYRIGHT 2020, MULTIQUIP INC.

Multiquip Inc and the MQ logo are registered trademarks of Multiquip Inc. and may not be used, reproduced, or altered without written permission. All other trademarks are the property of their respective owners and used with permission.

The information and specifications included in this publication were in effect at the time of approval for printing. Illustrations, descriptions, references and technical data contained in this document are for guidance only and may not be considered as binding. Multiquip Inc. reserves the right to discontinue or change specifications, design or the information published in this publication at any time without notice and without incurring any obligations.

Your Local Dealer is:



PN: 45717