



# Equipment Guide



## Compaction Equipment

Rammers .....	4
Plate Compactors .....	5-6
Battery-Powered Compaction .....	7-9
Rollers: Walk-Behind Single, Trench & Ride-On Tandem Drum .....	10-11

## Generators, Air Compressors and Welders

Generators: 2.5kW to 9.7kW .....	12
Generators: 6kW to 600kW .....	13-15
Air Compressors .....	15
Welders .....	16

## Trailers

Heavy-Duty Trailers .....	17
---------------------------	----

## Lighting Solutions

GloBug Balloon Light Stands, 4-spot and Balloon Light Carts, Towable Light Towers, Battery Powered Light Carts .....	18-20
---	-------

## Dewatering Equipment

Pumps: Submersible .....	21
Pumps: Centrifugal .....	22
Pumps: Trash and Diaphragm .....	23-25
Pumps: Accessories .....	26
Water Trailers .....	27

## Concrete-Masonry Technologies Equipment

Pumps: Concrete/Masonry .....	28
Mixers: Concrete/Towable .....	29
Mixers: Concrete, Mudtubs, Plaster/Mortar .....	30-32
Rebar Benders & Cutters .....	33
Power Buggies .....	34-35
Concrete Vibrators: MGX and Flex-Shaft .....	36
Concrete Vibrators: High-Cycle .....	37
Concrete Vibrators: High Frequency Inverter .....	38
Screeds: DuoScreed & Truss Screed .....	39-40
Trowels: Walk-Behind .....	41
Trowels: Ride-On Mechanical and Hydraulic .....	41-43
Chemical Sprayers .....	44



RELIABLE

## The standard in high-quality equipment solutions.

In business for fifty years, Multiquip is one of the largest, most diversified manufacturers and suppliers of world class quality products and solutions for the construction, industrial, telecom, government, non-commercial, aerospace, entertainment, and oil and gas exploration markets.

Multiquip's comprehensive product portfolio encompasses light to medium construction equipment, power generators and lighting. Servicing customers worldwide, Multiquip distributes its products in more than 70 countries through thousands of authorized distribution partners.



# RAMMERS

## MIKASA RAMMERS

### Features

- 4 cycle engines available from Honda
- Optional shoe sizes and extensions available
- Cyclone air filtration system on MTX series
- Cam-type clutch
- Grease- and oil-bath-lubricated models



### Technical specifications

MODEL	IMPACT FORCE LBS (KN)	BLOWS MIN MAX	ENGINE MAKE MODEL	HP (KW)	SHOE SIZE WIDTH IN (MM)	OPER. WEIGHT LBS (KG)	TRAVEL SPEED FT./MIN (M/MIN)*
MTR40HF	1,215 (5.4)	695	HONDA GX100	2.8 (2.1)	5.9 (150)	101 (46)	30 (9)
MTX50HD	2,316 (10.3)	695	HONDA GX100	2.8 (2.1)	10.4 (265)	129 (59)	49.2 (15)
MTX60HD	3,060 (13.6)	695	HONDA GX100	2.8 (2.1)	10.4 (265)	141 (64)	55.8 (17)
MTX70HD	3,350 (14.9)	690	HONDA GX100	3.0 (2.2)	11.2 (285)	165 (75)	55.8 (17)
MTX70HDR	3,350 (14.9)	690	HONDA GXR120	3.6 (2.7)	11.2 (285)	165 (75)	55.8 (17)
MTX80HDR	3,507 (15.6)	690	HONDA GXR120	3.6 (2.7)	11.2 (285)	181 (82)	49.2 (15)

\* Travel speed varies depending on the inclination of the machine, operator and the soil type

### MTX SERIES RAMMERS

#### 4 Cycle Engines

Honda offerings to meet operator expectations of reliability and easy starts.

#### MTX-series rammers

feature an anti-vibration handle that significantly reduces operator fatigue.

**Throttle design** enables contractor to control engine speed and fuel delivery with a single lever.

**Combination tachometer and engine hour meter** provides engine RPM and helps track service intervals.



## MIKASA FORWARD PLATE COMPACTORS

### Features

- Hour/tachometer standard on MVC88 series
- Cyclonic pre-cleaner on select models
- Removable water tank on select models
- Low-vibration handles on selected models
- Cogged belt drive on MVC88 series
- Open base plate design



### Technical specifications

MODEL	CENTRIFUGAL FORCE LBF (KN)	EXCITER SPEED VPM	MAX FWD SPEED PER MIN FT (M)	ENGINE	HP (KW)	PLATE WIDTH IN (MM)	OPER. WEIGHT LBS (KG)
MVC40H	1,619 (7.2)	6,200	82 (25)	HONDA GX100	2.8 (2.1)	11.6 (295)	110 (50)
MVC60VTH	2,315 (10.3)	5,800	82 (25)	HONDA GX120	3.5 (2.6)	13.8 (350)	154.3 (70)
MVC60VTHW <sup>†</sup>	2,315 (10.3)	5,800	82 (25)	HONDA GX120	3.5 (2.6)	13.8 (350)	167.6 (76)
MVC82VH* <sup>†</sup>	3,080 (13.7)	5,600	82 (25)	HONDA GX160	4.8 (3.6)	17.7 (450)	175 (79)
MVC82VGV	3,080 (13.7)	5,600	82 (25)	VANGUARD 160	5 (3.7)	17.7 (450)	185 (84)
MVC82VHW* <sup>†</sup> ^	3,080 (13.7)	5,600	82 (25)	HONDA GX160	4.8 (3.6)	17.7 (450)	181 (82)
MVC82VGVW^	3,080 (13.7)	5,600	82 (25)	VANGUARD 160	5 (3.7)	17.7 (450)	202 (92)
MVC88VTH* <sup>†</sup>	3,372 (15)	6,000	82 (25)	HONDA GX160	4.8 (3.6)	19.7 (500)	207 (94)
MVC88VTHW* <sup>†</sup> ^	3,372 (15)	6,000	82 (25)	HONDA GX160	4.8 (3.6)	19.7 (500)	229 (104)

<sup>†</sup> Water tank 11.6 quarts (11 liters)

\* Wheel kit attachment optional

<sup>†</sup> Urethane pad attachment optional

^ Water tank included

## MIKASA PAVER PLATE COMPACTORS

### Features

- Hard rubber rollers protect pavers from scratching, chipping, breaking and dragging
- Great for narrow areas and compaction alongside walls
- Toolless foldable handle allows for quick and easy loading into vans and trucks
- Rollers allow for easy pull back to compact on the spot
- Greatly improves productivity compared to standard plate compactors



### Technical specifications

MODEL	PLATE SIZE WxL IN (MM)	RUBBER ROLLER DIAMETER IN (MM)	EXCITER SPEED VPM (HZ)	CENTRIFUGAL FORCE LBF (KN)	GASOLINE ENGINE	HP (KW)	WEIGHT LBS (KG)
MVB85H	12.60 x 17.05 (320 x 433)	2.9 (73)	5,600 (93)	2,270 (10.1)	HONDA GX120	3.5 (2.6)	203 (92)
MVB150H	21.89 x 29.62 (556 x 752)	3.3 (83.8)	5,800 (97)	3,417 (15.2)	HONDA GX160	4.8 (3.6)	348 (158)

# MIKASA REVERSIBLE PLATE COMPACTORS

## Features

- High-power gasoline and diesel engines
- Selected models include hour/tachometer
- Selected models include cyclone pre-cleaner
- Selected models include extension plates as standard
- Hydraulic forward and reverse
- Adjustable handle height
- Compas Technology-Optional Compaction Analyzing System on select models



## Technical specifications

MODEL	CENTRIFUGAL FORCE LBF (KN)	EXCITER SPEED VPM	MAX FWD SPEED PER MIN FT (M)	ENGINE	HP (KW)	PLATE WIDTH IN (MM)	OPER. WEIGHT LBS (KG)
MVH128GH***	5,283 (23.5)	5,400	89 (27)	HONDA GX160	4.8 (3.6)	15.8 (400)	268 (122)
MVH158GH***	6,070 (27)	5,400	89 (27)	HONDA GX200	5.5 (4.1)	16.9 (430)	326 (148)
MVH208GH	8,318 (37)	5,200	85 (26)	HONDA GX270	7.1 (5.3)	20 (510)	463 (210)
MVH308GH**	10,116 (45)	4,400	79 (24)	HONDA GX270	8.5 (6.3)	24 (600)*	717 (325)
MVH308DE** ‡	9,217 (41)	4,400	79 (24)	HATZ 1B30E	6.1 (4.5)	24 (600)*	794 (360)
MVH408GH**	12,365 (55)	4,400	82 (25)	HONDA GX390	11.7 (8.7)	26 (650)*	836 (379)
MVH408DE** ‡ ^	12,365 (55)	4,400	82 (25)	HATZ 1B50E	10.6 (7.9)	26 (650)*	933 (423)
MVH408GV*	12,365 (55)	4,400	82 (25)	VANGUARD 400	14 (10.4)	26 (650)*	836 (379)
MVH508GH** ‡ ^	13,489 (60)	4,400	82 (25)	HONDA GX390	11.7 (8.7)	26 (650)*	970 (440)
MVH508DE** ‡ ^	15,737 (70)	4,300	82 (25)	HATZ 1D90E	14 (10.4)	26 (650)*	1,157 (525)
MVH508GV*	13,489 (60)	4,400	82 (25)	VANGUARD 400	14 (10.4)	26 (650)*	836 (379)

\* Plate width includes 6" extensions.

‡ Optional Compas available on Electric Start Models Only.

\*\* 6" and 12" extensions optional.

^ Electric start models do not include batteries.

\*\*\* Wheel kit attachment optional.

## COMPAS TECHNOLOGY



### Remove Guesswork. Save Time and Money.

An easy to read LED panel provides the operator with guidance as they compact soil. Lights illuminate progressively as density increases helping prevent costly over-compaction.

Available on select MVH-Series reversible plates listed below.

### Compas Model Guide

#### Electric Start Models Only

Plate Model	Compas Model
MVH308DE	CPAS308DE
MVH408DE	CPAS408DE
MVH508GH	CPAS508GH
MVH508DE	CPAS508DE

# MIKASA BATTERY-POWERED COMPACTION EQUIPMENT

## Features

- Electric Chassis – Fewer parts versus gas models for less downtime and service
- Emission-free and quieter – Ideal for indoor and noise-sensitive environments
- Anti-Vibration Design – Up to 30% reduction in hand-arm vibration versus gas model equivalent
- Controls – comfortable operation with power, start-stop and variable 3-speed push buttons
- Laminated Wood and Steel Shoe – Absorbs and withstands shock and stress for long life
- Protective Guards – Prevents damage to the motor



## Technical specifications

### RAMMER

MODEL	MTE55B*	MTXi60
IMPACT FORCE LBF (KN)	UP TO 2,425 (10.8)	3,064 (13.7)
SHOE JUMP HEIGHT IN (MM)	UP TO 2.76 (70)	UP TO 2.76 (70)
BLOWS PER MINUTE	UP TO 689	702
TRAVEL SPEED PER MIN (FT/M)†	UP TO 34.8 (10.6)	UP TO 40 (12)
MOTOR MAKE/MODEL	HONDA GXE2.0S	BATTERY ONE
MOTOR POWER SOURCE	DC BRUSHLESS	N/A
HP (KW)	2.4 (1.8)	3.1 (2.3)
RPM	3,600	4,350
START METHOD	PUSH BUTTON	PUSH BUTTON
OVERALL SIZE IN (MM)	28.2 x 13.8 x 40.9 (715 x 350 x 1040)	29.4 x 13.9 x 40.9 (748 x 352 x 1040)
SHOE SIZE IN (MM)	10.4 x 13.4 (265 x 340)	10.4 x 13.4 (265 x 340)
OPERATING WEIGHT WITH BATTERY LB. (KG)	165 (75)	163 (74) <sup>^</sup>
OPERATING RANGE PER BATTERY CHARGE FT <sup>‡</sup>	UP TO 1,598	
OPERATING TIME MIN	~ 35	30
HAND-ARM VIBRATION M/S <sup>2</sup>	3.6	6.5
BATTERY – MCB7210	OPTIONAL	–
CHARGER – MCB0190	OPTIONAL	–

\* Battery and charger sold separately.

<sup>^</sup> Weight includes battery pack.

<sup>‡</sup> Travel speed varies depending on the inclination of the machine, operator and the soil type

BATTERY-POWERED COMPACTION



## MIKASA BATTERY-POWERED COMPACTION EQUIPMENT



MVCe64VBW



MVHER60B

### Technical specifications

#### PLATE COMPACTORS

MODEL	MVCE64VBW*	MVCE82VBW*	MVCi60VBW*	MVHER60B*
MECHANICS	FORWARD	FORWARD	FORWARD	REVERSIBLE
PLATE SIZE IN (MM)	13.8 x 22.4 (350 x 570)	17.7 (450)	23 x 13.8 (585 x 350)	13.8 x 18.9 (350x480)
CENTRIFUGAL FORCE LBF (KN)	2,271 (10.1)	3,080 (13.7)	2,473 (11)	2,698 (12)
EXCITER SPEED VPM (HZ)	5,600 (93)	6,000 (100)w	5,880 VPM (98)	6,500 (108)
MAX FWD SPEED PER MIN FT (M)	79 (24)	82 (25)	82 (25)	79 (24)
MOTOR MAKE/MODEL	HONDA GXE2.0H	HONDA GXE2.0H	BATTERY ONE	HONDA GXE2.0H
MOTOR POWER SOURCE	DC BRUSHLESS	3-PHASE DC BRUSHLESS	N/A	DC BRUSHLESS
HP (KW)	2.4 (1.8)	2.4 (1.8)	3.1 (2)	2.4 (1.8)
RPM	3,600	3,600	3,600	3,600
START METHOD	PUSH BUTTON	PUSH BUTTON	PUSH BUTTON	PUSH BUTTON
OVERALL DIMENSIONS LXWXH IN (MM)	35.6 x 13.8 x 39.4 (905 x 350 x 1000)	9.2" x 10.6" x 5.9" (233 x 268 x 150)	41.5 x 13.8 x 39.8 (1,055 x 350 x 1,010)	37 x 13.8 x 37.2 (940 x 350 x 945)
OPERATING WEIGHT WITH BATTERY LBS (KG)	194 (88)	14.1 (6.4)	181 (82)	179 (81)
OPERATING TIME MIN	~ 30	~ 25	80 (BOB10) 110 (BOB14)	~ 35
HAND-ARM VIBRATIONS M/S <sup>2</sup>	2.4	—	1.8	5.8
OPERATING RANGE PER BATTERY CHARGE FT <sup>2</sup>	3,802	—	—	3,802
BATTERY	OPTIONAL MCB7210	OPTIONAL MCB7210	OPTIONAL BOB10, BOB14	OPTIONAL MCB7210
CHARGER	OPTIONAL MCB0190	OPTIONAL MCB0190	OPTIONAL BOC13	OPTIONAL MCB0190
WHEEL KIT	WHLE64 (OPTIONAL)	—	INCLUDED	WHLR60 (OPTIONAL)
STANDARD WATER TANK	52677 (STANDARD)	STANDARD	STANDARD	WTANKR60 (OPTIONAL)

\* Battery and charger sold separately.



## MIKASA BATTERY-POWERED COMPACTION EQUIPMENT CONT'D



### BATTERY AND CHARGER – OPTIONAL EQUIPMENT

MODEL	CHARGE TIME MIN	BATTERY/CHARGER	WEIGHT LBS (KG)	L x W x H IN (MM)	ENERGY CONTENT WH	VOLTS	CAPACITY AH
HONDA MCB7210	90	Li-Ion BATTERY	14.1 (6.4)	9.1 X 10.5 X 5.9 (231 X 267 X 149)	720	72	10
HONDA MCB0190	–	CHARGER	24.2 (11)	10.5 X 13.9 X 9.7 (266 X 352 X 247)	–	–	–
BATTERY ONE BOB10	95	Li-Ion BATTERY	21.4 (9.7)	8.7 x 11.4 x 7.7 (220 x 290 x 196.5)	1008	51	20
BATTERY ONE BOB14	140	Li-Ion BATTERY	22.0 (9.96)	8.7 x 11.4 x 7.7 (220 x 290 x 196.5)	1425	51	28
BATTERY ONE BOC13	–	CHARGER	11.7 (5.3)	11.7 x 15.6 x 8.5 (296 x 396 x 217)	–	–	–

### PLATE COMPACTORS – OPTIONAL EQUIPMENT

MODEL	WHEEL KITS	WATER TANK
MVCe64VB	WHL64	52677
MVHeR60B	WHLR60	WTANKR60

BATTERY-POWERED COMPACTION

# WALK-BEHIND ROLLERS

## WALK-BEHIND SINGLE-DRUM ROLLERS

### Features

- Maintenance free vibratory assembly
- Elongated steering handle
- Plastic water tank
- Three water flow adjustment settings
- Hour/Tachometer
- 29" wide steel drum
- Adjustable transport hooks
- Hydrostatic drive system



### Technical specifications

MODEL	CENTRIFUGAL FORCE LBS (KN)	VPM	DRUM WIDTH IN (MM)	ENGINE	HP (KW)	START METHOD	OPER. WEIGHT LBS (KG)
V305EK	3,800 (16.9)	4,200	29 (737)	KOHLER CH440	14 (10.4)	ELECTRIC/RECOIL	1,168 (530)

## MIKASA WALK-BEHIND TANDEM DRUM ROLLERS

### Features

- Water tank and spray bars
- Gasoline and diesel engines
- Hydrostatic drive
- Narrow profile
- External vibrator
- Front bumper and work light



### Technical specifications

MODEL	CENTRIFUGAL FORCE LBS (KN)	VPM (HZ)	DRUM WIDTH IN (MM)	ENGINE	HP (KW)	START METHOD	OPER. WEIGHT LBS (KG)
MRH800GS*	5,300 (23.5)	3,300 (55.3)	25.6 (650)	HONDA GX390	11.7 (8.7)	ELECTRIC/RECOIL	1,530 (694)
MRH601DS*	2,428 (10.8)	3,300 (55.3)	25.6 (650)	KUBOTA EA330-E3	6.2 (4.6)	ELECTRIC/RECOIL	1,248 (566)

\* Battery not included.

# TRENCH ROLLERS

## RAMMAX ARTICULATING TRENCH ROLLERS

### Features

- Articulating roller with removable drum rings for 24" and 33" working widths
- Durable articulation joint requires no greasing
- Oscillating joint keeps drum rolls in contact with soil for optimum compaction
- Yanmar engine delivers reliable starting and performance
- Infrared remote charges using solar power and automatically synchronizes with the roller
- Front and rear covers provide easy access to all maintenance points



### Technical specifications

MODEL	ROLLER DRUM WIDTH IN (MM)	CENTRIFUGAL FORCE LBS (KN)	ENGINE	HP (KW)	OPER. WEIGHT LBS (KG)	REMOVABLE DRUM RINGS
RX1575	24 (640)/ 33 (850)	16,860 (75) High 8,430 (37.5) Low	YANMAR 3TNV80/EPA 4F	20.4 (15)	3,087 (1,400)/ 3,197 (1,450)	OPTIONAL

## RIDE-ON TANDEM DRUM ROLLERS

### AR14H Features

- Compact design
- Articulated steering
- Maintenance free articulation joint and vibratory assembly
- Integrated hour/tachometer
- 12V power outlet and cup holder on cockpit
- Easy access to service points
- 35 gallon water tank



### Technical specifications

MODEL	CENTRIFUGAL FORCE LBS (KN)	VPM (HZ)	DRUM WIDTH IN (MM)	SPEED MPH (KPH)	ENGINE	HP (KW)	OPER. WEIGHT LBS (KG)
AR14H	3,400 (15.1)	4,200 (70)	35.6 (904)	0-4.8 (0-7.7)	HONDA GX630	20.8 (15.5)	2,688 (1,219)

# RIDE-ON ROLLERS

## MQ POWER PORTABLE GENERATORS

### Features

- Sizes ranging from 2,500 to 9,700 watts
- Two-year warranty
- Voltage regulation maintained within  $\pm 3\%$
- Brushless design minimizes maintenance
- Idle control on GA 36, GA 6, GA 97 and DA 7000SSA3 models
- Optional wheel kits available for DA 7000SSA3
- All receptacles GFCI protected (USA only)



### Technical specifications

MODEL	WATTS MAX/CONT	VOLTAGE	AMPERAGE MAX/CONT	ENGINE	HP (KW)	STARTER TYPE	DRY WEIGHT LBS (KG)
GA25HRNC	2,500/2,200	120V	20.8/18.3@120V	HONDA GX160	4.8 (3.6)	RECOIL	110 (50)
GA36HRNC	3,600/3,200	120V/240V	30/26.6@120V 15/13.3@240V	HONDA GX240	7.9 (5.9)	RECOIL	174 (79)
GA6HRNC	6,000/5,000	120V/240V	50/41.6@120V 25/20.8@240V	HONDA GX340	10.7 (8.0)	RECOIL	200 (90)
GA6HRSNC*	6,000/5,000	120V/240V	50/41.6@120V 25/20.8@240V	HONDA GX340	10.7 (8.0)	ELECTRIC/RECOIL	218 (99)
GA97HEANC	9,700/8,400	120V/240V	80.8/70@120V 40.4/35@240V	HONDA GX630	20.8 (15.5)	ELECTRIC	342 (155)
DA7000SSA3	7,000/6,000	120V/240V	58.3/50@120V 29.2/25@240V	KUBOTA Z482	12.5 (9.3)	ELECTRIC	527 (239)

#### CANADIAN SPECIFICATIONS

GAC97HEA†	9,700/8,400	120V/240V	80.8/70@120V 40.4/35@240V	HONDA GX610	16.6 (12.4)	ELECTRIC	341 (155)
DAC7000SSA3†	7,000/6,000	120V/240V	58.3/50@120V 29.2/25@240V	KUBOTA Z482	12.5 (9.3)	ELECTRIC	529 (240)

\* Optional battery available.

† Canada only.

**Effective January 1, 2024 sales of gasoline-powered generators are restricted within California.**

**See page 37 for high-cycle generators for FXA vibrators**

# MQ POWER WHISPERWATT

## Features

- Ideal for portable, standby and special events
- Highway-legal trailers and auxiliary fuel tanks available
- Open-Delta generator offers “best in class” motor starting
- Excellent voltage and frequency regulation
- Designed for low-noise operation - surpasses OSHA standards
- Full engine and generator instrumentation



Trailer optional

# MOBILE GENERATORS

## Technical specifications 6-36 kVA—Single Phase

MODEL	STANDBY OUTPUT KW(KVA)	PRIME OUTPUT KW(KVA)	AMPS 1-PHASE 120V	AMPS 1-PHASE 240V	AMPS 3-PHASE 240V	AMPS 3-PHASE 480V	WET WEIGHT LBS (KG)	TRAILER
DCA 6SPX4F	—	6 (6)	25 (2 SETS)	25	—	—	836 (379)	TRLRMP(XF)
DA 7000SSA3	7 (7)	6 (6)	25 (2 SETS)	25	—	—	582 (264)	TRLRMP(XF)
DCA 10SPX4	11 (11)	10 (10)	41.7 (2 SETS)	41.7A	—	—	1,250 (567)	TRLRMP(XF)
DCA 15SPX4F	14 (14)	14.7 (14.7)	58.3A (2 SETS)	58.3A	—	—	1,397 (620)	TRLRMP(XF)
DCA 20SPXU4F	22 (22)	20 (20)	83A (2 SETS)	83A	—	—	2,138 (970)	TRLR25US2
DCA 36SPXU4F	40 (40)	36 (36)	150A (2 SETS)	150A	—	—	3,087 (1,400)	TRLR45

## Technical specifications 7.5-600 kVA—Single/Three Phase

MODEL	STANDBY OUTPUT KW(KVA)	PRIME OUTPUT KW(KVA)	AMPS 1-PHASE 120V	AMPS 1-PHASE 240V	AMPS 3-PHASE 240V	AMPS 3-PHASE 480V	WET WEIGHT LBS (KG)	TRAILER
TLG 8SSK4F2	6.4 (8)	6 (7.5)	—	—	18A	—	646 (293)	TRLRMP(XF)
DCA 25SSIU4F	22 (27.5)	20 (25)	60A x 2 (ZIGZAG)	60A (ZIGZAG)	60A	30A	2,138 (970)	TRLR25US2
DCA 40SSKU4F2	29.7 (37)	28.8 (36)	108A x 2 (ZIGZAG)	108A (ZIGZAG)	86A	43A	2,823 (1,280)	TRLR45
DCA 45SSIU4F	40 (50)	36 (45)	108A x 2 (ZIGZAG)	108A (ZIGZAG)	108A	54A	2,976 (1,350)	TRLR45
DCA 70SSIU4F	62 (77)	56 (70)	168A x 2 (ZIGZAG)	168A (ZIGZAG)	168A	84A	4,211 (1,910)	TRLR70US
DCA 70SSJU4F	62 (77)	56 (70)	168A x 2 (ZIGZAG)	168A (ZIGZAG)	168A	84A	4,211 (1,910)	TRLR75XF2
DCA 125SSIU4F	110 (137.5)	100 (125)	300A x 2 (ZIGZAG)	300A (ZIGZAG)	300A	150A	6,702 (3,040)	TRLR125US
DCA 150SSJU4F3	132 (165)	120 (150)	361A x 2 (ZIGZAG)	361A (ZIGZAG)	361A	180A	10,869 (4,930)	TRLR180EV
DCA 180SSJU4F3	158 (198)	144 (180)	400 (4-WIRE)	200 (4-WIRE)	433A	216A	11,266 (5,110)	TRLR180EV
DCA 220SSJU4F3	194 (242)	176 (220)	489A (4-WIRE)	244.4A (4-WIRE)	529A	264.5A	8,489 (3,850)	TRLR220EV
DCA 220SSJU4F3PB	194 (242)	176 (220)	489A (4-WIRE)	244.4A (4-WIRE)	529A	264.5A	8,489 (3,850)	TRLR220EV
DCA 300SSJU4F3	264 (330)	240 (300)	666.7A (4Ç-WIRE)	333.3A (4-WIRE)	722A	360A	15,010 (6,810)	TRLR300EV
DCA 300SSJU4F3PB	264 (330)	240 (300)	666.7A (4-WIRE)	333.3A (4-WIRE)	722A	360A	15,010 (6,810)	TRLR300EV
DCA 400SSI4F3PB	336 (420)	320 (400)	888.9A (4-WIRE)	444.4A (4-WIRE)	962.3A	481.1A	13,184 (5,980)	TRLR 400XF3DAE
DCA 600SSV4F3PB	528 (660)	480 (600)	1333.3A (4-WIRE)	666.7A (4-WIRE)	1443.4A	721.7A	19,114 (8,670)	TRLR 600XFBP3E



## DEF REPLENISHMENT SYSTEM

### Features

- High capacity tank holds up to 100 and 300 (379l and 1135l) gallons of DEF
- Compact design simplifies transport and placement on site
- CAN bus DEF level monitoring for any Tier 4 Final diesel engine
- Application Flexibility – automatically maintains DEF level on one or two engines simultaneously, unattended\*
- Extends engine runtime and reduces the frequency of costly refilling
- Automatically purges supply lines to ensure that DEF quality is maintained after each replenishment cycle

### Technical specifications

MODEL	NUMBER OF GENERATORS	AMPERAGE REQ'S	EXTERNAL HOSE LENGTH	COMM CABLE	WET WEIGHT LBS (KG)
DEFTANK1*	1	5A	25 FT	25 FT	1,903 (863)
DEFTANK2*	2	5A x2	25 FT x2	25 FT x2	1,903 (863)
DEFTANK302*	2	5A x2	25 FT x2	25 FT x2	4,200 (1,905)

\* Diesel exhaust fluid; complies with ISO-22241

## MQ POWER STUDIO GENERATORS

### Features

- Heavy-duty diesel engine – EPA Tier 4 Final
- Sound-attenuated aluminum housing
- 6 set - Camlok receptacles mounted on waterfall panel
- Instrument panel with LED gauges (Volts, Amps & Hz)
- ComAp Digital Controller and color display



### Technical specifications

MODEL	PRIME OUTPUT KW	AMPS 3-PHASE 120/208 PRIME	ENGINE	HP (KW)	APPROX.NET WEIGHT LBS (KG)
SG 1400C4F	168	1,400	CUMMINS QSB7-G9	282 (210)	5,490 (2,490)
SG 1600C4F	192	1,600	CUMMINS QSB7-G9	282 (210)	5,490 (2,490)

Optional trailer with 145 gal (548L) fuel tank.



## MQ POWER AIR COMPRESSOR

### Features

- Quiet operation - sound attenuated, weather resistant housing reduced noise to as low as 69 db @ 23' (Full Load)
- Easy access to engine and air compressor through large lockable gull wing side doors
- Easy maintenance with external drain

### Technical specifications

MODEL	CFM	MAX PRESSURE	ENGINE	HP (KW)	FUEL CAPACITY GAL (L)	LxWxH (IN)	WET WEIGHT LBS (KG)
DIS100SSK4F	95	120	KUBOTA D1005-E4B	23.2 (17.3)	10.6 (40)	112x58.1 x55.1	1,631 (740)



## MQ POWER ENGINE POWERED WELDERS

### Features

- The industry's most versatile line of welder / generators
- Simultaneous use of DC Welding and AC power output on selected models
- CC/CV welding output on 300 Amp and larger models
- Dual welding capability on DLW330X2, DLW400ESA4 and DLW500ESA4 for maximum productivity
- Smart stick functions on DLW330X2, DLW400ESA4 and DLW500ESA4. Automatically starts/stops engine for optimal fuel conservation.
- Selected models feature E-mode to reduce fuel consumption and noise levels
- Optional remote available on selected models (300-500)
- AC receptacles GFCI protected



Trailer optional

### Technical specifications

MODEL	DC CURRENT	DC VOLTAGE	DUTY CYCLE	CURRENT RANGE	POWER OUTPUT; AMPS	ENGINE	WEIGHT LBS (KG)	LxWxH IN (CM)	TRAILER/WHEEL KIT
<b>GASOLINE</b>									
GAW135HNC**	135A	25.2V	40%@135A 100%@80A	40-135A	1.5KW; 12.5	HONDA GX200	114 (52)	22x19x21 (55x48x53)	UWKB
GAW180HEANC**	180A	26.8V	50%@180A 100%@110A	50-180A	3KW; 25	HONDA GX340	236 (107)	28x26x22 (70x65x56)	UWKB
<b>DIESEL</b>									
DLW300ESA1*	300A	31CC	100%@280A	30-300A	9.6KW; 80/40	KUBOTA D722	849 (385)	51x27x33 (130x69x84)	TRLRMPXF
DLW330X2*	340A Single 200A Duel	31 2x26.6CC	100%@280A 2x165	30-340A 30-200A	9.6KW; 80/40	KUBOTA D902	893 (405)	51x27x33 (130x69x84)	TRLRMPXF
DLW400ESA4*	400A Single 200A Duel	34 2x27CC	100%@350A 2x175	30-400A 2x30-200A	12KW; 100/50	KUBOTA D902	1,028 (466)	61x29x35 (154x72x89)	TRLRMPXF
DLW500ESA4*	500A	14-40CV 38CC	100%@450A	30-500A	12KW; 100/50	ISUZU 4LE2T	1960 (890)	80x33x45 (204x83x113)	TRLR502XF

\* TIER 4f

† Optional battery available.

\*\* Not available for sale or use in California or Canada.

**Effective January 1, 2024 sales of gasoline-powered generators are restricted within California.**

# MQ POWER HEAVY-DUTY TRAILERS

# TRAILERS

## Features

- Heavy-duty welded steel frame construction
- Powder coat paint process including frame, channel, actuator and fenders (excluding TRLR600XFBP3E)
- D.O.T. approved tail lamps, stop lamps, turn signal lamps and side marker lamps
- Surge hydraulic or electric-actuated drum brakes (all axles) on select models



## Technical specifications

MODEL	GROSS VEHICLE WEIGHT RATING LBS	GROSS AXLE WEIGHT RATING LBS	TIRE SIZE	TIRE LOAD RATING LBS	LXWXH (IN)	FUEL TANK CAPACITY GAL	WEIGHT DRY (WET) LBS
TRLRMP	2,000	2,000 EA	ST175/80D 13LR-C	1,360 EA	98.6x55.5x22	-	383 (-)
TRLRMPXF	2,000	2,000 EA	ST175/80D 13LR-C	1,360 EA	98.6x55.5x22	28	513 (713)
TRLR25US2	2,720	3,500 EA	ST175/80D 13LR-C	1,360 EA	105.7x56x21	-	406 (-)
TRLR45	7,000	3,500 EA	ST205/75D 14LR-C	1,760 EA	148x65.25x27	-	1056 (-)
TRLR502XF	6,000	3,500 EA	ST205/75D 14LR-C	1,760 EA	154x65.25x25	80	1,611 (2,179)
TRLR70US	7,000	3,500 EA	ST205/75D 15LR-C	1,820 EA	164.4x72.5x23.5	-	980 (-)
TRLR75XF2	7,000	3,500 EA	ST205/75D 15LR-C	1,820 EA	142.5x69.5x28.5	100	1,366 (2077)
TRLR85XF2	7,000	3,500 EA	ST225/75D 15LR-D	2,540 EA	180.86 x 72.25 x 29.45	180	1,740 (2,990)
TRLR125XF2	9,000	4,500 EA	ST225/75D 15LR-D	2,540 EA	180.86 x 72.25 x 29.45	180	1,998 (3,278)
TRLR125US	10,000	5,000 EA	ST225/75D 15LR-D	2,540 EA	181x79.5x24.7	-	1,719 (-)
TRLR180EV	14,000	7,000 EA	ST235/80R 16LR-G	3,520 EA	212.9x89x26.58	-	2,404 (WET) (-)
TRLR220EV	16,000	8,000 EA	ST235/85R 16LR-G	4,400 EA	212.9x89x26.58	-	2,404 (WET) (-)
TRLR300EV	10,000	10,000 EA	ST235/75R 17.5LR-J	6,005 EA	223.15x99.5x32.95	-	3,076 (WET) (-)
TRLR 400XF3DAE	21,000	7,000 EA	ST235/ 80R16 LR-E	3,500 EA	264x94x27.4	350	4,280 (1,943)
TRLR 600XFBP3E	34,000	12,000 EA	ST235/75R 17.5LR-H	6,005 EA	324x102x35.4	600	25,638 (WET) (29,904)

## GLOBUG BALLOON LIGHTS

### Features

- Operates on 120V AC Power
- 360° illumination
- Glare-free lighting
- Internal electric ballast
- Weather resistant balloon material
- LED lamp models
- Easy set-up and transportation
- Industrially designed stand and cart options



### Technical specifications

MODEL	TYPE	LAMP	WEIGHT LBS (KG)
GB3LED	LED LAMP W/TRIPOD	300W LED	27 (59)
GB3LEDB	LED LAMP ONLY**	300W LED	18 (40)
GB3LEDC	LED LAMP WITH CART*	300W LED	82 (37)
GB8LED	LED LAMP W/ PENTAPOD	800W LED	48 (22)
GB8LEDB	LED LAMP ONLY**	800W LED	25 (11)
GBC8LED	LED LAMP WITH CART*	800W LED	126 (57)

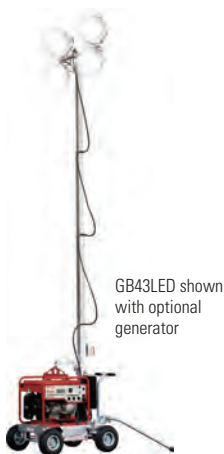
\* Generator not included with cart models.

\*\* Balloon lamp assembly only - does not include mast, stand or cart.

## GLOBUG 4-SPOT LIGHT TOWERS

### Features

- Ultimate compact cart design
- LED lamp models
- 4-stage mast LED
- Operates from 120V house or generator power
- LED mast to 17.1'



### Technical specifications

MODEL	VOLTAGE	AMPS	BULB WATTAGE	LUMENS	BULB TYPE	WEIGHT LBS (KG)
GB43LED*	120V	11	4 x 300W	152,000	LED	316 (165)

\* Generator not included with model.

## GLOBUG LIGHT TOWERS

### GBX12SK Features

- Trusted Kubota liquid-cooled diesel engine – EPA/CARB compliant
- High efficiency LED lamps produce bright, clear 168,000 lumen projection lighting
- LED longevity and safety – lamps provide 40,000 hours of operational life and allow for immediate strike/re-strike lamp capability
- Aerospace mast design – anodized aluminum 5-section vertical telescopic mast assembly provides superior strength and corrosion resistance
- Industrial trailer assembly – rugged, compact design meets all DOT/NHSTA trailer and cabinet requirements
- Dual 120VAC / 15 amps GFCI auxiliary output receptacle



### OPTIONAL ACCESSORIES

- 3" Pintle hitch (EE26246 AND 29718)
- Autostart Sensor (GBX12SKAUTOSTART)

### GBX24BK Features

- Trusted Kubota liquid-cooled diesel engine – EPA/CARB compliant
- High efficiency LED lamps produce bright, clear 399,000 lumen diffused lighting
- LED longevity and safety – lamps provide 40,000 hours of operational life and allow for immediate strike/re-strike lamp capability
- Aerospace mast design – anodized aluminum 5-section vertical telescopic mast assembly provides superior strength and corrosion resistance
- Industrial trailer assembly – rugged, compact design meets all DOT/NHSTA trailer and cabinet requirements
- Dual 120VAC / 15 amps GFCI auxiliary output receptacle

### OPTIONAL ACCESSORIES

- 3" Pintle hitch (EE26246 AND 29718)
- Autostart Sensor (GBX12SKAUTOSTART)

### Technical specifications

MODEL	ENGINE	LAMP TYPE	LAMP STYLE	LUMENS	LAMP LIFE	WEIGHT LBS (KG)
GBX12SK	DIESEL	LED	4-SPOT	168,000	40,000 HRS	1,288 (515)
GBX24BK	DIESEL	LED	BALLOON	399,000	40,000 HRS	1,278 (511)

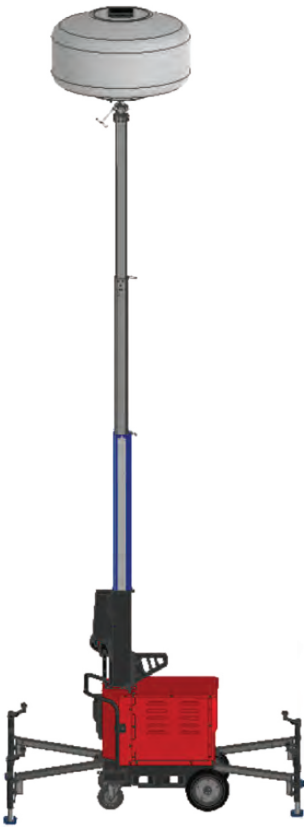


# BATTERY POWERED LIGHTING

## BATTERY POWERED LIGHT CARTS

### Features

- 100% battery powered
- Zero emission
- Ultra quiet
- Low maintenance
- Quick recharge with 2 chargers
- Fit through standard doorway
- Low energy cost



### Technical specifications

MODEL	LAMPS	LUMENS	RUN TIME (HOURS)	CHARGING	MAST HEIGHT (FT)	WEIGHT LBS
GBBAT3S4M	4x300W LED SPOTLIGHTS	300W - 212,000	300W - 8	ONE CHARGER: 11 HOURS	20	904
		180W - 143,000	180W - 14	TWO CHARGERS: 5.5 HOURS		
		100W - 86,800	100W - 24.5			
GBBAT8BM	800W LED BALLOON	800W - 110,000	800W - 13	ONE CHARGER: 11 HOURS	21	849
		600W - 90,000	600W - 16.5	TWO CHARGERS: 5.5 HOURS		
		400W - 67,000	400W - 23.5			

## SUBMERSIBLE CLEAN WATER PUMPS

### Features

- 3/4" to 6" diameter discharge
- Selected models integrated with UL and CUL listed electric motors
- Compact and streamlined design with thermal overload protection
- Single-phase and three-phase motors are available
- The double oil-filled seal provides a positive lubrication (selected models)



### Technical specifications

MODEL	DISCHARGE IN (MM)	GPM (LPM)	TOTAL HEAD FT (M)	VOLTAGE PHASE	HP (KW)	DIAMETER IN (MM)	WEIGHT LBS (KG)
YELLSUB	1.25 (38)	33 (125)	15 (4.6)	115 1Ø	0.25 (0.185)	5.3 (136)	6(2.72)
SS233	2 (50)	60 (227)	20 (6.1)	115 1Ø	0.5 (0.37)	8.1 (206)	15.5(7)
ST1†	0.75 (19)	27 (100)	23 (7)	115 1Ø	0.25 (18.7)	6.3 (160)	8.8 (4)
ST1F#	0.75 (19)	27 (100)	23 (7)	115 1Ø	0.25 (18.7)	6.3 (160)	9.4 (4.3)
ST2038P	2 (50)	60 (227)	38 (11.5)	115 1Ø	1.0 (0.75)	7.7 (196)	31(14)
ST2037	2 (50)	73 (276)	37 (11.3)	115 1Ø	1.0 (0.75)	7.4 (188)	31(14)
ST2037F#	2 (50)	73 (276)	37 (11.3)	115 1Ø	1.0 (0.75)	7.4 (188)	31(14)
ST2047	2 (50)	87 (329)	47 (14.3)	115 1Ø	1.0 (0.74)	7.4 (188)	33(15)
ST3020BCUL	3 (75)	170 (644)	72 (22)	230 1Ø	2.0 (1.5)	6.7 (170)	67(30)
ST3050D*†	3 (75)	264 (999)	86 (26)	230/460 3Ø	5.0 (3.7)	10.2 (259)	120(54)
ST41230*†	4 (101)	423 (1,601)	138 (42)	230 3Ø	10 (7.4)	12.5 (318)	205(93)
ST41460*†	4 (101)	423 (1,601)	138 (42)	460 3Ø	10 (7.4)	12.5 (318)	205(93)
ST61230*†	6 (152)	674 (2,423)	105 (32)	230 3Ø	15 (11.1)	14 (356)	301(136)
ST61460*†	6 (152)	674 (2,423)	105 (32)	460 3Ø	15 (11.1)	14 (356)	301(136)

† Not currently available for sale or use in Canada.

\* Three-phase—specify voltage when ordering  
Models ST3050D, ST41230, ST41460, ST61230, ST1460 highly recommend a Control Box when ordering.

# with integrated Float Switch.

## SUBMERSIBLE TRASH PUMPS

### Features

- Compact design with thermal-overload protection
- Handles solids up to 1" in diameter
- PX400 is designed with plastic/stainless steel housing
- The double oil-filled seal provides a positive lubrication (selected models)



### Technical specifications

MODEL	DISCHARGE IN (MM)	GPM (LPM)	MAX HEAD FT (M)	VOLTAGE PHASE	HP (KW)	DIAMETER IN (MM)	WEIGHT LBS (KG)
PX400†	2 (51)	72 (273)	34 (10.3)	115 1Ø	0.5 (0.37)	10 (254)	25 (11)
ST2040T	2 (51)	79 (299)	40 (12.2)	115 1Ø	1.0 (0.75)	10.3 (267)	34 (15.4)
ST2040TF#	2 (51)	79 (299)	40 (12.2)	115 1Ø	1.0 (0.75)	10.3 (267)	34 (15.4)
ST2010TCUL	2 (51)	95 (360)	45 (13.7)	115 1Ø	1.0 (0.75)	10.3 (267)	77 (35)

# with integrated Float Switch.

# ELECTRIC SUBMERSIBLE PUMPS

# CENTRIFUGAL PUMPS

## CENTRIFUGAL PUMPS

### Features

- Dewatering pumps for a variety of clear water applications
- Industrial die cast aluminum pump-end design
- Compact and portable
- Dependable Honda gasoline engines
- Adjustable discharge port
- Sturdy wrap-around frame



### Technical specifications

MODEL	SUCTION X DISCHARGE IN (MM)	GPM (LPM)	MAX HEAD FT(M)	ENGINE	HP (KW)	WEIGHT LBS (KG)
QP2H	2x2 (51x51)	158 (600)	115 (35)	HONDA	3.2 (2.4)	53 (24)
QP303H	3x3 (76x76)	245 (931)	98 (30)	HONDA	4.8 (3.6)	77 (35)
QP402H	4x4 (101x101)	425 (1,615)	100 (30)	HONDA	7.9 (5.9)	145 (65)

## HIGH-PRESSURE CENTRIFUGAL PUMPS

### Features

- Honda-powered with low-oil alert
- High head producing
- High pressure producing
- Unique 3 discharge port manifold
- Excellent for fire emergencies, portable irrigation and equipment cleaning



### Technical specifications

MODEL	SUCTION X DISCHARGE IN (MM)	GPM (LPM)	MAX HEAD FT (M)	MAX PSI	ENGINE	HP (KW)	WEIGHT LBS (KG)
QP15HP	2x2 (51x51)	56 (212)	197 (60)	86	HONDA	2.1 (2.8)	22 (10)
QP205SH	2x1.5/1/1 (51x38/25/25)	106 (401)	230 (70)	100	HONDA	4.8 (6.4)	64 (29)
QPT205SLT	2x1.5/1/1 (51x38/25/25)	126 (479)	312 (95)	135	HONDA	7.9 (5.9)	99 (45)
QPT305SLT	3x1.5/1/1 (76x38/25/25)	145 (550)	328 (100)	142	HONDA	10.7 (8.0)	110 (50)
QPT405SLT	4x3/3/4 (101/76/76/101)	210 (795)	377 (115)	163	HONDA	10.7 (8.0)	305 (137)



## TRASH PUMPS

### Features

- Rugged die-cast pump casings
- 2", 3" & 4" suction/discharge
- Ductile iron impellers
- Silicon/carbide mechanical seals
- Easy access clean-out covers
- 1" protective roll frame
- Gasoline & diesel engine models
- Handles solids up to 2" diameter
- Optional wheel kits are available



### Technical specifications

MODEL	SUCTION & DISCHARGE IN (MM)	GPM (LPM)	MAX HEAD FT (M)	MAX SOLIDS IN (MM)	ENGINE	HP (KW)	WEIGHT LBS (KG)
-------	-----------------------------	-----------	-----------------	--------------------	--------	---------	-----------------

#### GASOLINE ENGINES

QP2TH	2x2 (51x51)	211 (800)	98 (30)	1.0 (25.4)	HONDA	4.8 (3.6)	96 (43.5)
QP2TB	2x2 (51x51)	211 (800)	98 (30)	1.0 (25.4)	VANGUARD	5 (3.68)	104 (47)
QP3TH	3x3 (76x76)	396 (1,500)	95 (29)	1.5 (38.1)	HONDA	7.9 (5.9)	142 (64)
QP3TB	3x3 (76x76)	396 (1,500)	95 (29)	1.5 (38.1)	VANGUARD	10 (7.35)	144 (65.5)
QP4TH	4x4 (100x100)	555 (2,100)	92 (28)	2.0 (50.8)	HONDA	10.7 (8.0)	216 (98)

#### DIESEL ENGINES - PIPE FRAME MODELS

QP2TK	2x2 (51x51)	172 (650)	85 (26)	1.0 (25)	KUBOTA	6.0 (4.5)	157 (71)
QP3TK	3x3 (76x76)	325 (1,229)	85 (26)	1.5 (38)	KUBOTA	6.0 (4.5)	176 (80)
QP4TK	4x4 (102x102)	475 (1,798)	85 (26)	2.0 (51)	KUBOTA	9.5 (7.0)	286 (130)

MODEL	FUEL CAPACITY GPM (LPM)	GPM (LPM)	MAX HEAD FT (M)	MAX SOLIDS IN (MM)	ENGINE	HP (KW)	WEIGHT LBS (KG)
-------	-------------------------	-----------	-----------------	--------------------	--------	---------	-----------------

#### DIESEL ENGINES - TRAILER MOUNTED MODELS

QP4TKT16	16.0 (60.6)	475 (1798)	85 (26)	2.0 (51)	KUBOTA	9.5 (7.0)	665 (302)
QP4TKT28	28.0 (106)	475 (1798)	85 (26)	2.0 (51)	KUBOTA	9.5 (7.0)	735 (333)



Model QP4TKT28 shown

## AUTOMATIC PUMPS

### Features

- The full-featured control panel enables operator to choose either "pump-up" or "pump-down" applications and flow control capability
- The unique pump design includes float switches to turn the pump on/off according to changing water levels to enable automatic operation
- Honda engine includes an electric starter and automatic choke design
- Standard wheel kit and lifting eye for easy movement on site



### Technical specifications

MODEL	SUCTION & DISCHARGE IN (MM)	GPM (LPM)	MAX HEAD FT (M)	MAX SOLIDS IN (MM)	ENGINE	HP (KW)	WEIGHT LBS (KG)
QP3Ti	3x3 (76x76)	396 (1,500)	95 (29)	1.5 (38.1)	HONDA	7.9 (5.9)	142 (64)

## SOUND ATTENUATED PUMPS

### QP3TS Features

- Enclosed engine design for superior sound suppression - only 63 dB(A)
- Ideal for projects in residential or urban areas with strict noise regulations
- Honda engine includes an electric start and extended run time of up to 4.5 hours under full load
- Rugged wheel and handle kit included for easy movement on site



### QP3THX Features

- Unique muffler design offers excellent sound suppression - only 71 dB(A)
- Ideal for projects where noise is a concern - including commercial and municipal applications
- Honda engine includes oversized fuel tank for an extended run time of up to 7.2 hours under full load
- Job site proven pump end features dual discharge ports and heavy-duty impeller design



### Technical specifications

MODEL	SUCTION & DISCHARGE IN (MM)	GPM (LPM)	MAX HEAD FT (M)	MAX SOLIDS IN (MM)	ENGINE	HP (KW)	WEIGHT LBS (KG)
QP3TS	3x3 (76x76)	396 (1,499)	95 (29)	1.5 (38)	HONDA	8.5 (6.3)	287 (130)
QP3THX	3x3 (76x76)	396 (1,500)	95 (29)	1.5 (38.1)	HONDA	7.9 (5.9)	142 (64)

## TRASH PUMPS – 6" Skid & Trailer Mount

### Features

- Powerful wet priming system
- 6" suction/discharge
- Passes 3" solids
- Ductile iron impellers
- Multi-position discharge
- LED control boxes
- Strong No. 30 grey iron pump housing
- Silicon/carbide mechanical seal
- Multiple DOT approved trailer packages
- Battery included with all 6" pumps



### Technical specifications

MODEL	FUEL CAPACITY GPM (LPM)	GPM (LPM)	MAX HEAD FT (M)	MAX SOLIDS IN (MM)	ENGINE	HP (KW)	WEIGHT LBS (KG)
DIESEL ENGINES - MQ62 SERIES - SKID MOUNTED MODEL							
MQ62TKS	16 (61)	1,190 (4505)	111 (34)	3.0 (7.6)	KOHLER	24.3 (18)	1,560 (702)
DIESEL ENGINES - MQ62 SERIES - TRAILER MOUNTED MODEL							
MQ62TKT	28 (106)	1,190 (4505)	111 (34)	3.0 (7.6)	KOHLER	24.3 (18)	1,700 (771)
DIESEL ENGINES - MQ600 SERIES - SKID MOUNTED MODEL							
MQ600H	40 (151)	1,600 (6057)	150 (46)	3.0 (7.6)	HATZ	68.4 (50)	2,200 (998)
DIESEL ENGINES - MQ600 SERIES - TRAILER MOUNTED MODEL							
MQ600HTB	40 (151)	1,600 (6057)	150 (46)	3.0 (7.6)	HATZ	68.4 (50)	2,850 (1293)
MQ600HTP	40 (151)	1,600 (6057)	150 (46)	3.0 (7.6)	HATZ	68.4 (50)	2,850 (1293)

## DIAPHRAGM PUMPS

### Features

- Ideal for slow seepage, sludge and heavy debris-laden fluid applications
- Quick, easy priming
- Wheel Kit included
- Simple pump operation mechanics and reliable design



### Technical specifications

MODEL	SUCTION x DISCHARGE IN (MM)	GPM (LPM)	ENGINE	HP (KW)	WEIGHT LBS (KG)
MQD2HA	2x2 (51x51)	50 (189)	HONDA	3.5 (2.6)	125 (57)
MQD3HA	3x3 (76x76)	90 (342)	HONDA	3.5 (2.6)	175 (79)

## PUMP ACCESSORIES

### Features

- Full line of suction hoses
- Full line of discharge hoses
- Float switches
- Control boxes for submersible pumps
- Wheel kits for pipe frame pumps
- DOT approved industrial trailers for trash pumps

### PUMP HOSES



**Multiquip offers a complete line of Suction and Discharge Hoses**, in sizes from 1-1/2" to 8" with standard thread or quick-disconnect couplings.

### FLOAT SWITCHES FOR SUB PUMPS



**Multiquip offers industrial Float Switches**, to support dewatering operations. Single and Dual Float Switches available.

### CONTROL BOXES FOR SUB PUMPS



**Multiquip offers rugged Control Boxes**, for sub pump operations and electrical protection. Pumps requiring Control Boxes: ST3050D, ST41230, ST41460, ST61230 and ST61460.

### TRASH PUMP WHEEL KITS and TRAILERS

**Optional wheel kits are available for almost every Multiquip trash pump.**

Easily installed, they simplify mobility on the job site.

**Industrial trailers with fuel cells** are available for QP4TK, MQ62TK and MQ600HT models.

Wheel Kit Model UWKB shown



## WATER TRAILERS

### Features

- High strength 525 and 800 gallon polyethylene water tank
- Industrial dual axle trailers
- Rear mounted accessory hose bin
- Suction/Discharge hose sections provided
- Trusted Multiquip centrifugal water pumps
- Simple 2-control handle manifold system
- Left/right discharge and suction ports
- Cam and Groove lock discharge and suction couplers
- Rear spray bar system
- Rugged, convenient steel hydrant fill tube



WT5C shown with  
WT5HR Hose Reel Accessory

### Technical specifications

#### 525 GALLON WATER TRAILERS

MODEL	CAPACITY GAL	PUMP GPM	MAX HEAD FT	ENGINE	TRAILER	WEIGHT (DRY) LBS	HOSE REELS - STANDARD
WT5C	525	158	115	HONDA GX-120	DUAL AXLE	1,428	-
WT5CHR	525	158	115	HONDA GX-120	DUAL AXLE	1,428	✓
WTE5C	525	158	115	HONDA GX-120	ELECTRIC BRAKES	1,428	-
WTE5CHR	525	158	115	HONDA GX-120	ELECTRIC BRAKES	1,428	✓
WT5HP	525	106	230	HONDA GX-160	DUAL AXLE	1,538	✓
WTE5HP	525	106	230	HONDA GX-160	ELECTRIC BRAKES	1,538	✓

#### 800 GALLON WATER TRAILERS

MODEL	CAPACITY GAL	PUMP GPM	MAX HEAD FT	ENGINE	TRAILER	WEIGHT (DRY) LBS	HOSE REELS - STANDARD
WT8C	800	158	115	HONDA GX-120	DUAL AXLE	1,960	-
WT8CHR	800	158	115	HONDA GX-120	DUAL AXLE	1,960	✓
WTE8C	800	158	115	HONDA GX-120	ELECTRIC BRAKES	1,960	-
WTE8CHR	800	158	115	HONDA GX-120	ELECTRIC BRAKES	1,960	✓
WT8HP	800	106	230	HONDA GX-160	DUAL AXLE	2,070	✓
WTE8HP	800	106	230	HONDA GX-160	ELECTRIC BRAKES	2,070	✓

#### ACCESSORIES - HOSES

MODEL	HOSE TYPE	SIZE IN	LENGTH FT	COUPLER	PSI CAPACITY
HS220	SUCTION	2	20	NPT THREAD	75
HSQ220	SUCTION	2	20	QUICK DISCONNECT	75
HSQ225	SUCTION	2	25	QUICK DISCONNECT	75
HDQ250	DISCHARGE	2	50	QUICK DISCONNECT	-
HDFNST	FIRE HYDR. DISCHARGE	2.5	25	QUICK DISCONNECT	200
WT5HR	HOSE REEL ASSEMBLY	1	50	NPT THREAD	200

## MAYCO MECHANICAL BALL VALVE PUMPS

### Features

- Powerful, 45 HP Zenith gasoline engine
- One-piece forged, heat-treated crankshaft
- 3-speed volume control allows the operator to vary the flow
- Fully-enclosed “splash” lubrication box provides clean, positive piston lubrication
- Ball and valve seat



### Technical specifications

MODEL	MAX AGGREGATE IN (MM)	PUMPING RATE YDS <sup>3</sup> /HR (M <sup>3</sup> /HR)	ENGINE	HP (KW)	WEIGHT LBS (KG)
C30HDG A	1/2 (10-12)	25 (19)	ZENITH GASOLINE	42 (31.3)	2,910 (1,320)

## MAYCO HYDRAULIC SWING TUBE PUMPS

### Features

- Versatile—shotcrete, masonry block fill, slabs, footings
- Designed to pump larger aggregate up to 1-1/2"
- Variable volume output from 0 to 45 cu. yds. per hour
- Up to 1,100 psi piston face pressure
- Digital diagnostic control panel
- Available with optional wireless remote control



### Technical specifications

MODEL	MAX AGGREGATE IN (MM)	PUMPING RATE YDS <sup>3</sup> /HR (M <sup>3</sup> /HR)	ENGINE	HP (KW)	WEIGHT WITHOUT FUEL LBS (KG)
LS450	1.5 (38)	45 (34)	HATZ TURBO DIESEL	74.5 (55.5)	5,155 (2,328)
LS300GK	1.5 (38)	30 (22.9)	KUBOTA GASOLINE	85.0 (63)	4,385 (1989)

## TOWABLE CONCRETE MIXERS

### Features

- Steel drum or polyethylene versions available
- Variety of power sources
- Leaf springs standard on 6-, 9- and 12-cu. ft. mixers
- Oversized dump wheel – easier to discharge material
- 13" tires for safe towing
- Steel mixers available with 4-, 6- or 9-cu. ft. drums
- Polyethylene models available with 6-, 9- or 12-cu. ft. drums; simplify cleanup while resisting rust and dents



Polyethylene Drum

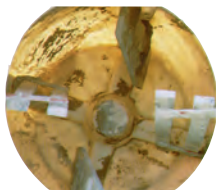


Steel Drum

### Technical specifications

STEEL MODEL	POLY MODEL	CAPACITY CU FT (L)	DRUM OPENING IN (MM)	ENGINE	HP (KW)
MC44SE	–	4 (113)	17.5 (445)	115V	0.5 (.37)
MC44SH	–	4 (113)	17.5 (445)	HONDA	3.5 (2.6)
MC64SE	MC64PE	6 (169)	19 (483)	115/230V	1.5 (1.1)
MC64SH5	MC64PH5	6 (169)	19 (483)	HONDA	4.8 (3.6)
MC64SH8	MC64PH8	6 (169)	19 (483)	HONDA	7.9 (5.8)
MC64SK	MC64PK	6 (169)	19 (483)	KOHLER	9.2 (6.8)
MC94SE	MC94PE	9 (254)	21 (533)	115/230V	1.5 (1.1)
MC94SH8	MC94PH8 MC12PH	9 (254) 12 (339)	21 (533) 20 (508)	HONDA HONDA	7.9 (5.8) 10.7 (7.9)
MC94SK	MC94PK	9 (254)	21 (533)	KOHLER	9.2 (6.8)

### POLYETHYLENE DRUMS



**Polyethylene drum mixers clean out easily and quickly!** These photos show a batch of concrete that was left to dry for more than 24 hours. With a few taps of a mallet, virtually all the dried material falls out of the mixer. It's truly that simple to clean!



## PORTABLE CONCRETE MIXERS

### Features

- MixNGo is perfect for homeowners, small jobs, and multiple work sites
- Versatile stand rotates 360 degrees and facilitates dumping into wheelbarrow
- Polyethylene drum simplifies cleanup while resisting rust and dents
- Pneumatic tires provide convenience on rough terrain
- Gearbox gears are immersed in oil for long trouble-free life
- Available in electric or rechargeable battery drive options



### Technical specifications

MODEL	DRUM CONSTRUCTION	BATCH CAPACITY CU FT (L)	DRUM OPENING IN (MM)	POWER
MC3PEA	POLY	3 (85)	15.5 (394)	3/4 HP, 115V, 1Ø ELECTRIC
MC3PBAT	POLY	3 (85)	15.5 (394)	48V, 30Ah LITHIUM ION BATTERY

# MUDTUBS

## MUDTUBS

### Features

- Capacity 10-cu. ft. (.28 m<sup>3</sup>)
- Highly durable polyethylene construction resistant to cold weather and UV
- Our tough Easy Clean™ tubs can be cleaned in minutes with tap of rubber mallet
- Resists dents, rust or cracks
- Mud Tub features 4" x 4" rectangular steel feet
- Mud Tub W features heavy-duty, high impact resistance 8 inch casters
- One-year warranty
- Approximate 1,000 lb. capacity



### Technical specifications

MODEL	TUB TYPE	DIMENSIONS IN (CM)	WEIGHT LBS (KG)
MUDTUB	STATIONARY	L 56.75 (1,141) W 28.25 (717.5) H 22.75 (577.8)	54 (24.4)
MUDTUBW	MOBILE	L 56.75 (1,141) W 28.25 (717.5) H 28.25 (717.5)	81 (36.7)

## WHITEMAN TOWABLE PLASTER/MORTAR MIXERS

### Features

- Hydraulic-drive options on 12-cu. ft. models
- Available in 6.3-, 7-, 9- and 12-cu. ft. models
- Heavy-duty safety grate with built-in bag cutter
- 13" tires for safe towing
- Forklift pockets
- Steel models offer durable drum up to 3/16" thick
- Polyethylene drums simplify cleanup while resisting rust and dents



### Technical specifications

STEEL MODEL	POLY MODEL	CAPACITY CU FT (L)	ENGINE	HP (KW)	DRIVE
WM63E	—	6.3 (178)	115/230V,1Ø	1.5 (1.1)	V-BELT/GEAR
WM63H5	—	6.3 (178)	HONDA	4.8 (3.6)	V-BELT/GEAR
WM63H8	—	6.3 (178)	HONDA	7.9 (5.8)	V-BELT/GEAR
WM63LF	—	6.3 (178)	MPOWER	9 (6.7)	V-BELT/GEAR
WM70SE	WM70PE	7 (198.2)	115/230V,1Ø	1.5 (1.1)	V-BELT/GEAR
WM70SH5	WM70PH5	7 (198.2)	HONDA	4.8 (3.6)	V-BELT/GEAR
WM70SH8	WM70PH8	7 (198.2)	HONDA	7.9 (5.8)	V-BELT/GEAR
WM70SLF	WM70PLF	7 (198.2)	MPOWER	9 (6.7)	V-BELT/GEAR
WM90SE	WM90PE	9 (254.9)	230V,1Ø	3.0 (2.2)	V-BELT/GEAR
WM90SH8	WM90PH8	9 (254.9)	HONDA	7.9 (5.8)	V-BELT/GEAR
WM90SLF	WM90PLF	9 (254.9)	MPOWER	9 (6.7)	V-BELT/GEAR
WM120SHHD	WM120PHD	12 (339.8)	HONDA	11.7 (8.7)	HYDRAULIC

## PORTABLE MORTAR MIXERS



### Technical specifications

STEEL MODEL	CAPACITY CU FT (L)	ENGINE	HP (KW) <sup>1</sup>	DRIVE
WM45H	4.5 (113)	HONDA	4.8 (3.6)	V-BELT/GEAR
WM45E	4.5 (113)	115/230V,1Ø	1.0 (0.7)	V-BELT/GEAR

## ESSICK TOWABLE PLASTER/MORTAR MIXERS

### Features

- Full range of mixers designed for professional masonry contractors
- Towable mixers with 7-, 9- and 12-cu. ft. capacities
- Paddle shaft seals require no greasing
- Smooth towing whether on the job or on the highway



Steel Drum

### Technical specifications

STEEL MODEL	CAPACITY CU FT (L)	ENGINE	HP (KW)	DRIVE
EM70SE	7 (198.2)	115/230V	1.5 (1.1)	V-BELT/GEAR
EM70SH5	7 (198.2)	HONDA	4.8 (3.6)	V-BELT/GEAR
EM70SH8	7 (198.2)	HONDA	7.9 (5.9)	V-BELT/GEAR
EM70SLF	7 (198.2)	MPOWER	9 (6.1)	V-BELT/GEAR
EM90SE	9 (254.9)	230V, 1Ø	3.0 (2.2)	V-BELT/GEAR
EM90SH8	9 (254.9)	HONDA	7.9 (5.9)	V-BELT/GEAR
EM90SLF	9 (254.9)	MPOWER	9 (6.1)	V-BELT/GEAR
EM12M51	12 (339.8)	230V, 1Ø	5.0 (3.7)	MECHANICAL
EM12ME53	12 (339.8)	230/460V, 3Ø	5.0 (3.7)	MECHANICAL
EM12M	12 (339.8)	HONDA	11.7 (8.7)	MECHANICAL
EM120HYD	12 (339.8)	HONDA	11.7 (8.7)	HYDRAULIC

## ESSICK PRO MIXERS

### Features

- PRO12 & PRO20 models offer stationary design for silo applications
- Easy loading – operator loads at waist height
- Hydraulic drive handles tough mix designs – including 1-inch aggregate
- Powerful engine equipped recoil and electric start
- Forklift pockets standard on all models
- Battery included



### Technical specifications

#### STATIONARY MODELS

MODEL	CAPACITY CU FT	ENGINE	HP (KW)	DRIVE
PRO12	12	HONDA GX390	11.7 (8.7)	HYDRAULIC
PRO12E51	12	ELECTRIC	5 HP 1Ø 230V	HYDRAULIC
PRO12E53	12	ELECTRIC	5 HP 3Ø 230V	HYDRAULIC
PRO12E53-460V	12	ELECTRIC	5 HP 3Ø 460V	HYDRAULIC
PRO20	20	VANGUARD	18.0 (13.4)	HYDRAULIC

## REBAR BENDERS

### Features

- Compact design for use on the jobsite or in the shop
- Control knob selects precise bending angle
- Standard with foot control switch
- A full variety of rollers and collars are included to accommodate all rebar sizes up to 1" diameter



### Technical specifications

MODEL	BENDING CAPACITY IN (MM)	BENDING SPEED SECONDS	BENDING RANGE	ELECTRIC MOTOR	OPER. WEIGHT LBS (KG)
MB25A*	1.0 (25.4)	5 SECONDS FOR 180°	0-180°	115V, 60HZ	227 (103)

\* Not currently available for sale or use in Canada.

## REBAR CUTTERS

### Features

- HBC features 1" maximum capacity; powered by 115V electric motor
- Compact and lightweight for easy portability
- Replaceable cutting blocks with multiple cutting edges
- Built-in hydraulic pump with magnetic particle filtering



### Technical specifications

MODEL	CUTTING DIAMETER IN (MM)	CUTTING SPEED SECONDS	RATED POWER AMPS	ELECTRIC MOTOR	WEIGHT LBS (KG)
115V MODELS					
HBC19B	3/4 (19)	2.5	9	115V, 60HZ, 1Ø	28 (12.8)
HBC25B	1 (25)	3.5	12	115V, 60HZ, 1Ø	48 (22)

# POWER BUGGIES

## WHITEMAN POWER BUGGIES

### Wheel-drive Features

- Heavy-duty frame with 6" dump height
- 8%-10% greater dumping reach – 5% greater dumping angle than competitors
- Easy Clean™ Poly Tub
- Available with optional all-wheel drive



### Technical specifications

MODEL	WIDTH IN (MM)	LENGTH IN (MM)	MAX LOAD LBS (KG)	CAPACITY CU. FT (CU.M)	STARTING SYSTEM	FUEL CAPACITY GAL (L)	HP (KW)	SPEED MPH (KPH)
WBH16F*	44 (1,171.6)	103 (2,641.6)	2,500 (1,134)	16 (3.5)	RECOIL	4.8 (18.5) GAS	11.7 (8.7)	7 (11.26)
WBH16EF*	44 (1,171.6)	103 (2,641.6)	2,500 (1,134)	16 (3.5)	RECOIL & ELECTRIC	4.8 (18.5) GAS	11.7 (8.7)	7 (11.26)
WB-H16EAWDF*	44 (1,171.6)	103 (2,641.6)	2,500 (1,134)	16 (3.5)	RECOIL & ELECTRIC	4.8 (18.5) GAS	18.0 (10.4)	7 (11.26)
WBH-16BAT	39.6 (1,005.8)	101.85 (2587.073)	2,500 (1,134)	16 (3.5)	48V 7kWh BATTERY	N/A	7	6 (9.6)
WBH21EF*	44 (1,171.6)	103 (2,641.6)	3,200 (1,451)	21 (0.59)	RECOIL & ELECTRIC	4.8 (18.5) GAS	18.0 (10.4)	7 (11.26)
WBH21EFP	44 (1,171.6)	103 (2,641.6)	3,200 (1,451)	21 (0.59)	RECOIL & ELECTRIC	7.5 (PROPANE)	18.0 (10.4)	7 (11.26)

\* Foam-filled tires.

### Track Drive Features

- Straight dump or pivot dump models available
- Track drive provides best traction on muddy terrain
- Hydraulic drive eliminates mechanical linkages for improved reliability



Model WTB16PD  
Also available straight dump

### Technical specifications

MODEL	WIDTH IN (MM)	LENGTH IN (MM)	MAX LOAD LBS (KG)	CAPACITY CU. FT (CU.M)	STARTING SYSTEM	FUEL CAPACITY GAL (L)	HP (KW)	SPEED MPH (KPH)	DISCHARGE POSITION
WTB16	35.5 (90.2)	102 (2,590)	2,500 (1,134)	16 (0.453)	ELECTRIC	5.0 (18.9)	22.0 (16.4)	4.7 (7.6)	STRAIGHT DUMP
WTB-16PD	35.5 (90.2)	110.2 (2,800)	2,500 (1,134)	16 (0.453)	ELECTRIC	5.0 (18.9)	22.0 (16.4)	4.7 (7.6)	PIVOT DUMP

## TUFFTRUK POWER BUGGY

### Features

- Zero Emission battery drive
- Long-lasting charge provides up to 8 hours of use. Capable of running up to two or three days under normal conditions.
- Quiet operation produces very low noise
- True 4-wheel drive with pneumatic tires
- Excellent maneuverability with 40 degree articulation
- Available with a variety of attachments
- Rugged steel or poly tub



### Technical specifications

MODEL	WIDTH IN (MM)	LENGTH IN (MM)	MAX LOAD LBS (KG)	CAPACITY CU. FT (CU.M)	STARTING SYSTEM	SPEED MPH (KPH)	TUB TYPE
TB12SE	34.5 (86.3)	70.0 (1788)	1,100 (498.6)	7 (0.198)	BATTERY POWERED	0-4 (0-6.4)	STEEL TUB
TB12PE	34.5 (86.3)	70.0 (1788)	1,100 (498.6)	7 (0.198)	BATTERY POWERED	0-4 (0-6.4)	POLY TUB
TB-800BAT	35.2 (894)	84.8 (2153)	1,800 (800)	12.5 (0.35)	BATTERY POWERED	0-5 (0-8)	POLY TUB

### Options

MODEL	DESCRIPTION
TSP	SNOW PLOW
TTBH	TOWING HITCH
TT7	7FT <sup>3</sup> CLIP ON TUB
TFB33	33.4" FLATBED
TFB29	29" FLATBED
TTH	DUMP HANDLE
TTE	TUB EXTENSION KIT

## MIKASA UM-SERIES VIBRATORS

### Features

- Lightweight and powerful 120V motor
- Ideal for footings and block walls
- Vibration dampening handle design
- Three shaft and four head sizes available



### Technical specifications

COMPLETE ASSEMBLY (MOTOR, HEAD, SHAFT)

MODEL	AMPS	HEAD DIAMETER IN (MM)	OVERALL LENGTH FT (M)	FREQUENCY VPM (HZ)	SET WEIGHT LBS (KG)
UM12325	3.8	0.9 (23)	9.6 (2.9)	12,000-15,500 (200-258)	14.3 (6.5)
UM12810	3.8	1.1 (28)	4.7 (1.4)	12,000-15,500 (200-258)	11.4 (5.2)
UM12815	3.8	1.1 (28)	6.3 (1.9)	12,000-15,500 (200-258)	13 (5.9)
UM12825	3.8	1.1 (28)	9.6 (2.9)	12,000-15,500 (200-258)	16.06 (7.3)
UM13225	3.8	1.25 (32)	9.6 (2.9)	12,000-15,500 (200-258)	16.5 (7.5)
UM13810	3.8	1.5 (38)	4.7 (1.4)	12,000-15,500 (200-258)	12.54 (5.7)
UM13815	3.8	1.5 (38)	6.3 (1.9)	12,000-15,500 (200-258)	14.11 (6.4)
UM13825	3.8	1.5 (38)	9.6 (2.9)	12,000-15,500 (200-258)	17.16 (7.8)

## BACKPACK & FLEX-SHAFT VIBRATORS

### Features

- Gasoline-powered backpack and stationary drive motor or electric handheld motors available
- Flexible shafts from 2 ft. to 21 ft. long
- UL compliance testing to USA and Canadian standards on all electric motors
- Ideal for footings and block walls
- Six heads from 7/8" to 2-5/8" available



### Technical specifications

HAND-HELD ELECTRIC MOTORS

MODEL	VOLTAGE	AMPS	RPM	WEIGHT LBS (KG)
CV1A	120V	10	16,000	11 (5)
CV2A	120V	15	18,000	13 (6)
CV2B	240V	7.5	18,000	13 (6)
CV3A	120V	20	19,250	14 (6)
CV3B	240V	10	19,250	14 (6)

GASOLINE DRIVE

MODEL	ENGINE	HP (KW)	MOTOR TYPE	WEIGHT LBS (KG)
BPX	HONDA	2.1 (1.6)	BACKPACK	31 (14)
G55H	HONDA	4.8 (3.6)	STATIONARY/SWIVEL	74 (33)

HEADS AND SHAFTS

STEEL HEAD DIAMETERS IN (MM)	FLEXIBLE SHAFT LENGTHS FT (M)
7/8 (22), 1-1/16 (27), 1-3/8 (35), 1-11/16 (43), 2-1/8 (54), 2-5/8 (67)	2 (.6), 7 (2.1), 10 (3), 12 (3.7), 14 (4.3), 21 (6.4)





## HIGH-CYCLE GENERATORS

### Features

- Powers up to three FXA-Series high-cycle vibrators simultaneously
- 5kVA, 230-volt, 180-cycle output
- 3,600 watts continuous 60-cycle, single-phase power
- Reliable Honda engine with recoil start, low-oil shutdown and idle control
- Lifting bail for easy moving
- All receptacles GFCI protected

### Technical specifications

MODEL	MAX/CONT @180HZ	OUTPUT @180HZ	MAX/CONT @60HZ	OUTPUT @60HZ	ENGINE	HP (KW)	WEIGHT LBS (KG)
GDP5HANC*	5KVA	230V, 12.5A	4KW/3.6KW	120/240V, 60HZ, 30/15A	HONDA GX340	9.5 (7.1)	236 (107)

\* Not currently available for sale or use in Canada.

**Effective January 1, 2024 sales of gasoline-powered generators are restricted within California.**

## MIKASA FXA HIGH-CYCLE CONCRETE VIBRATORS

### Features

- Ideal for medium- to low-slump applications
- Motor-in-head design minimizes VMP loss under load
- Extended hose lengths available in 10' and 20' increments
- Cable extensions available in 50' and 100' increments

### Technical specifications

MODEL	HEAD DIA IN (MM)	HEAD LENGTH IN (MM)	HOSE LENGTH FT (M)	CORD LENGTH FT (M)	AMPS	CENTRIFUGAL FORCE LBS (KG)	VPM	WEIGHT LBS (KG)
FXA50A4	2 (51)	16-1/2 (419)	13.1 (4)	33 (10)	2	714 (324)	10,800	36 (16)
FXA50A6	2 (51)	16-1/2 (419)	20 (6.1)	33 (10)	2	714 (324)	10,800	55 (25)
FXA50A9	2 (51)	16-1/2 (419)	30 (9)	33 (10)	2	714 (324)	10,800	83 (38)
FXA60A4	2-3/8 (60)	19-1/4 (489)	13.1 (4)	33 (10)	4.5	1,358 (616)	10,800	42 (19)
FXA60A6	2-3/8 (60)	19-1/4 (489)	20 (6.1)	33 (10)	4.5	1,358 (616)	10,800	65 (29)
FXA60A9	2-3/8 (60)	19-1/4 (489)	30 (9)	33 (10)	4.5	1,358 (616)	10,800	96 (44)

### Hose Extension Kit for FXA High Cycle Concrete Vibrators

MODEL	FEET	WEIGHT
FXAKIT10FT	10	20 LB
FXAKIT20FT	20	40 LB

*Extended handling hose may be added in 10-foot and 20-foot increments to meet application requirements. Extensions are special order, contact Multiquip for terms and lead times.*

## HIGH FREQUENCY INVERTER CONCRETE VIBRATORS

### Features

- Allow the operator to change output frequency according to the slump conditions. Customers report greater productivity with far less operator strain.
- The FU162A High Frequency Inverter has a push switch that changes the output frequency to the vibrator head, allowing the operator to keep up with the changing conditions of the concrete mix. Conventional concrete vibrators do not have the option to change motor RPM and frequency.
- Soft Start mode allows smooth starts even under load
- Inverter powers up to two concrete vibrators with four head size options (Powers only one FX60E6)
- Maintains top performance in virtually any slump condition with a powerful and highly efficient motor
- Rugged control box with sealed electronics

FU162A Controller powers any TWO\* of these vibrators:

FX30E6 (1.25") • FX40G6 (1.7")

FX50G6 (2") • FX60E6 (2.4")

\* Only ONE FX60E6 can be powered at 18 Amps.



FX50G6 2" Head diameter



FU162A Control Panel



### Technical specifications

#### HIGH FREQUENCY INVERTER

MODEL	RECEPTACLES	INPUT POWER				OUTPUT POWER				WEIGHT
		VOLTAGE	PHASE	AMPS	Hz	VOLTAGE	PHASE	AMPS	Hz	
FU162A	2	100-120 220-240	1	20-16 14-10.5	50 60	48	3	19.2	100 240	8.7

#### CONCRETE VIBRATORS

MODEL	HEAD DIA IN (MM)	HEAD LENGTH IN (MM)	HOSE LENGTH FT (M)	CORD LENGTH FT (M)	VOLTAGE	AMPS	Hz	VPM	WEIGHT LBS (KG)
FX30E6	1.25 (32)	15.6 (396)	20 (6)	50 (15)	48	4	200/240	12,000 14,000	23 (10.3)
FX40G6	1.7 (43)	15.6 (396)	20 (6)	50 (15)	48	6	200/240	12,000 14,000	30 (13.7)
FX50G6	2 (52)	16.3 (413)	20 (6)	50 (15)	48	9.5	200/240	12,000 14,000	36 (16.5)
FX60E6	2.4 (61)	19.1 (485)	20 (6)	50 (15)	48	18	200/240	12,000 14,000	44 (19.9)

**NOTE:** The FU162 and FX concrete vibrator series not compatible with other MQ Mikasa high cycle vibrator series, including **Micon and FXA-series vibrators.**

All models meet Canadian electrical requirements.

**Warranty:** FU162A Controller and FX Vibrators are covered by a one year parts and labor warranty. Contact Multiquip for complete warranty information.

#### HOSE EXTENSION KIT

MODEL	LENGTH FT	WEIGHT LBS
VHKIT10FT	10	20
VHKIT20FT	20	40

**NOTE:**

Hose extension options only available for FX40G6 & FX50G6. Hose extension options not compatible with FX30E6 or FX60E6.

## WHITEMAN DUOSCREED

### Features

- Blade quickly removed without tools; handle folds for storage
- Powered by maintenance-free flexible shaft
- Unique patented reversible blade design allows both form-to-form and wet screeding with a single blade



### Technical specifications

SCREED MODEL	ENGINE	HP (KW)	VPM	DRIVE SYSTEM	WEIGHT LBS (KG)
DSGPULW	HONDA GX35	1.3 (1.0)	5,500	FLEXIBLE SHAFT MAINTENANCE FREE	32 (14.5)

MODEL: DSBLW

BLADE WIDTHS FT (M)

6 (1.8)	8 (2.44)	10 (3.0)	12 (3.66)	14 (4.27)	16 (4.88)
---------	----------	----------	-----------	-----------	-----------

### DUOSCREED BLADE

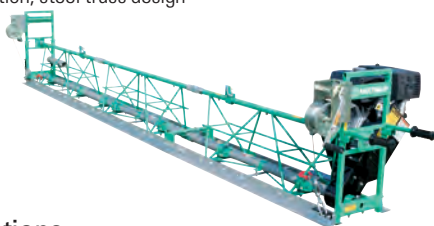
The handheld screed uses a unique reversible blade that is designed for form-to-form and wet screeding.



## WHITEMAN TRUSS SCREEDS

### Features

- Durable triangular steel truss spans up to 65 ft.
- Gas engine-driven vibration, steel truss design
- Heavy-duty steel construction
- Optional self-propelled winches minimize labor



### Technical specifications

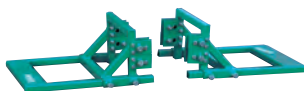
DESCRIPTION	MODEL	WEIGHT LBS (KG)
2.5-FT.(0.76M) TRUSS SECTION	MSHE25	57 (26)
5.0-FT.(1.5M) TRUSS SECTION	MSHE50	95 (43)
7.5-FT.(2.28M) TRUSS SECTION	MSHE75	136 (62)
SELF-PROPELLED WINCH - (LEFT)(RIGHT)	WSHESPW(L)(R)*	105 (48)
END HANDLE SET	MSHEH	54 (27)
11 HP HONDA ENGINE KIT	MSHEKIT11H	112 (51)
5' SECTION W/ WSHEKIT11H MOUNTED	MSHE50KIT11H	207 (94)
UNIVERSAL JOINT KIT	WSHEKITUJ	22 (10)
INVERT CROWN KIT	WSHEIC	98 (45)
REINFORCEMENT BRACKET	WSHRBE	6 (2.7)
ADJUSTABLE END BRACKET	WSKITAEB	24 (11)
ADJUSTABLE END BRACKET WITH ROLLERS	WSKITAEBR	26 (12)
HAND WINCH SET	WSHW	42 (19)

\*Includes standard mounted 2.5 ft. sections.

### SCREED KITS AND ACCESSORIES



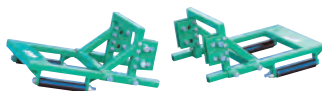
Universal Joint Kits



Adjustable End Brackets



Invert/Crown Kits



Adjustable End Brackets with Rollers

## WHITEMAN TROWELS

### Features

- Optional QuickPitch™ Control for fast, precise blade adjustment
- Equipped with heavy-duty centrifugal clutch. HD-Series features CVT drive system.
- Optional manual (hand) clutch
- Precision balanced for the ultimate finish
- CA4HM has folding handle
- J3036H55 edger converts from 30" to 36"



### Technical specifications

MODEL	COVERAGE IN (MM)	HP (KW)	MOTOR	RPM
CA4HM	24 (610)	4.8 (3.6)	HONDA	70-130
CA4HC	24 (610)	4.8 (3.6)	HONDA	70-130
J36E2	36 (914)	2 (1.5)	230V	30-160
J3036H55	36 (914)	4.8 (3.6)	HONDA	60-115
J36H55	36 (914)	4.8 (3.6)	HONDA	60-115
J36B65	36 (914)	6.5 (4.8)	VANGUARD	60-115
J36H90H	36 (914)	8.5 (6.3)	HONDA	90-155
B46H90	46 (1,170)	8.5 (6.3)	HONDA	60-130
B46B90	46 (1,170)	8.5 (6.3)	BRIGGS AND STRATTON	60-130
B46H11H	46 (1,170)	9.5 (7.1)	HONDA	90-155

MODEL	HANDLES	HP (KW)	MOTOR	RPM	WEIGHT LBS (KG)
JH55C*	SXHC OR QXHC	4.8 (3.6)	HONDA GX160	60-115	164 (74.3)

MODEL	COVERAGE IN (MM)	HP (KW)	MOTOR	RPM	WEIGHT LBS (KG)
HDA48413H	48 (1,220)	11.7 (8.7)	HONDA	30-225	315 (166)

\* Features InstaClutch drive system.

## WHITEMAN TROWELS - MECHANICAL DRIVE

### Features

- Twin 36" and 48" models
- HHNG5 features air-cooled 35 HP Vanguard engine
- Twin Pitch control simultaneously adjusts blade pitch of rotors or disengages to adjust individually
- CVT Drive System allows high-torque panning and high-speed for burnishing slabs



### Technical specifications

MODEL	PATH WIDTH IN (MM)	ROTOR RPM	ENGINE	HP (KW)	WEIGHT LBS (KG)
JWN24HTCSL	75 (1,910)	30-180	HONDA	24 (17.8)	685 (209)
HHNG5	92 (2,336.8)	0-180	VANGUARD	35 (26)	1,083 (491)

## WHITEMAN HYDRAULIC DRIVE TROWELS

### Features

- Patented Engine Power management senses engine load and adjusts hydraulic pump stroke allowing engine to run at peak efficiency
- 6-ft, 8-ft & 10-ft models available
- SmartPitch, cruise control, and LED lighting
- Tier 4 final Hatz engines on STX6H/HTX6H models
- Ford Power Products engines on STXDF
- Gasoline/Propane option on STXDF



### Technical specifications

MODEL	PATH WIDTH IN (MM)	ROTOR RPM	ENGINE	HP (KW)	WEIGHT LBS (KG)
LD6SL	75 (1950)	0-140	VANGUARD V TWIN	23 (17)	865 (393)
HTX6H	92 (2,336.8)	0-160	HATZ TURBO DIESEL (TIER 4 FINAL )	70 (52.1)	2,345 (1,063)
STX6H	117 (2,971.8)	0-130	HATZ TURBO DIESEL (TIER 4 FINAL )	70 (52.1)	2,544 (1,153)
STXDF	117 (2,971)	0-150	2.5 LITER FORD POWER PRODUCTS DUAL FUEL	84 (61)	2,600 (1179.3)

## INTRODUCING THE MD80 RIDER TROWEL

**A powerful engine and hydrostatic drive** ensure consistent, reliable power transfer to twin 46" rotors for flawless concrete finishing.

**Eliminates traditional wear** items like belts, clutches, and gearboxes – simplifying maintenance and reducing downtime.

**Six-blade rotors** deliver increased stability, improved weight distribution, and the smoothest, most precise finish in the industry.

**Hydraulic steering, cruise control, and electric pitch control** work together to reduce operator fatigue and maximize productivity – making every job easier.



### Technical specifications

MODEL	PATH WIDTH IN (MM)	ROTOR RPM	ENGINE	HP (KW)	OPERATING WEIGHT LBS (KG)
MD80	95 (2,413)	0-160	VANGUARD 40 HP EFI	40 (29.8)	1,564 (709.4)

## INTRODUCING THE MD105 RIDER TROWEL

**Dual Honda iGX800 engines and hydrostatic drive** deliver unmatched power to twin 60" rotors.

**Lower PSI and overall weight** allows earlier slab entry, longer finishing windows, and greater versatility on multistory decks.

**Rebuildable spider assemblies** and the elimination of wear items mean less downtime and more productivity on every job.

**Maximum torque** ensures seamless panning, while high-speed performance delivers a flawless, professional burnish every time.

**Hydraulic steering, cruise control, and electric pitch control** work together to reduce operator fatigue and maximize productivity – making every job easier.



### Technical specifications

MODEL	PATH WIDTH IN (MM)	ROTOR RPM	ENGINE	HP (KW)	OPERATING WEIGHT LBS (KG)
MD105	131 (3,327)	0-140	TWO (2) HONDA IGX800	24.9 (18.3)	1,974 (895.3)

## FLOAT PANS & TROWEL BLADES

**Pans: Superflat or flat configurations, for use with ride-on trowels, and flat or domed for use with walk-behind trowels.**



Allows fast floating and easy movement from wet to dry areas. Excellent for applying shake-on toppings. Achieve higher FF numbers and increased production. Available in the following sizes: 24", 36", 46" and 60".

**Blades: Float, finish and combination float/finish for walk-behind and ride-on trowels.**

Interchangeable with most competitive models. Provides best possible results when used with Whiteman trowels.



Unique Enduro Blade series features heavy-duty design, providing up to 30% longer life. Quick-change blades have bolt-less design for fast, easy blade replacement.

# CHEMICAL SPRAYERS

## CHEMICAL SPRAYING SYSTEM

### Features

- Durable 5.5 HP gear reduction Honda GX160 engine allows for years of trouble-free service
- WSC55BM attachment offers the versatility of moving from a rolling cart to a stationary barrel for ease of application
- Quick disconnect hoses offer the ability to quickly change from one product to another
- Chemical Platform is sloped by design to allow all liquid to easily be dispensed from any container
- Tow handle allows this unit to be moved on the job site by hand unloaded, or with an all-terrain fork truck when loaded
- Engine driven compressor allows the operator to recycle any leftover product remaining in the system back into the original container (Compressor Offered on WSC55 only)
- Simple parking brake allows the unit to be secured on unstable or uneven ground at all times
- Smooth tires have no tread to reduce risk of surface defects



### Technical specifications

MODEL	ENGINE	HP (KW)	LBS (KG)	FUEL CAP.	GPM	PUMP TYPE
WSC55	HONDA GX160	4.8 (3.6)	290 (131)	.825 US GL	7 @ 125 PSI	ROLLER
WSC55BM (BARREL MOUNT)	HONDA GX160	4.8 (3.6)	82 (37)	.825 US GL	7 @ 125 PSI	ROLLER
WSC55C (CART ONLY)	—	—	—	—	—	—



# INDUSTRY LEADING TECH SUPPORT

Visit [service.multiquip.com](https://service.multiquip.com) for technical support information on your MQ products to keep equipment operating at peak performance!

- MQ Genuine Parts
- Manuals
- Technical Specifications
- Service Center locations
- Warranty Support
- Technical bulletins and more!



Learn how you can put our experience to work for you with our unique program – contact us for more information at [service.multiquip.com](https://service.multiquip.com)



# **MQ** GENUINE PARTS MULTIQUIP®

Keep your equipment operating at optimum performance levels. MQ maintenance kits save time and money by delivering everything you need in one convenient package!



Retail POP displays also available.



Order today visiting [MULTIQUIPPARTS.COM](http://MULTIQUIPPARTS.COM)





**MULTIQUIP INC.**  
6141 KATELLA AVE.  
SUITE 200  
CYPRESS, CA 90630  
310-537-3700  
MULTIQUIP.COM  
mq@multiquip.com