



MQ WHITEMAN[®] **POWER BUGGIES**



WBH-16 • WBH-16BAT • WBH21

multiquip.com

THE BEST CHOICE FOR CONCRETE AND MATERIAL TRANSPORT.



WBH-16EF
16 cu. ft. capacity

Features common on all-wheel drive and standard drive models:

- **Quickly dump material:** an 80° dump angle assures the tub is emptied on your first approach.
- **Reduce concrete splatter** during transport with an integrated splash guard.
- **Smooth operation under all conditions** with a fully hydrostatic drive system.
- **Actuate dumping mechanism** using either a hand lever or a foot pedal.
- **Spend less time refueling** using either a hand lever or a foot pedal.
- **Lifting is made easier** by multiple attachment points and forklift pockets.
- **Enter confined areas and pass through 32" doorways** with removable outer tires.
- **Superflex foam filled tires** provide a soft air-like ride while extending tire life.
- **Electric or recoil start models** available.



Operator's platform provides convenient access to all controls. Expanded metal floor plate provides secure footing and can be raised for storage or maneuvering in tight areas.

POWER BUGGY - 21 CUBIC FOOT WITH PROPANE OR GASOLINE SYSTEM

Lower emission operation, longer run times, and extended engine life make this buggy ideal for any job site – especially semi-enclosed spaces.



WBH-21EPF

21 cu. ft. capacity

- Low-emission operation **ideal for semi-enclosed and confined jobsite** environments
- Cleaner combustion reduces wear, **extending engine life** and long-term reliability
- **Travel speed:** 7.25 mph (11.6km)
- **18 Horsepower Vanguard engine**
Gasoline or Propane
- **Starting system:** recoil and electric start.
- **Fuel type:** Propane EPA/CARB compliant
- **Closed fuel system:** easier to maintain and eliminates gummed up carburetors.
- **Fuel capacity:** 7.5 gal. baffled tank or 4.8 gal. standard fuel tank
- **High density polyethylene tub** withstands the toughest use.
- **Superflex foam filled tires** provide a soft air-like ride while extending tire life.
- **Width:** 44 inches (111.7 cm)
- **Weight:** 1,570 lbs. (712.1 kg)

ALL-WHEEL DRIVE POWER BUGGY

Easily switch to All-Wheel Drive and maintain high levels of production in the most challenging environments, whether it's sand, mud, or loose gravel.

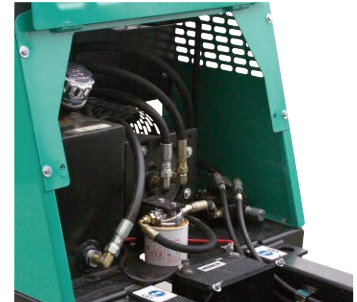
Heavy duty main frame provides structural integrity with low center of gravity for increased stability and traction.



WBH-16EAWD

16 cu. ft. capacity

Features electric start Vanguard engine



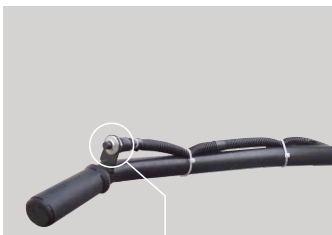
Quick Service Access

Hinged access door for easy maintenance.

Hydraulic hoses are located within the frame for fast access and protection.



Toggle switch allows operator to easily switch from two-wheel drive to all-wheel drive.



Pressing button in AWD mode prevents wheel slippage and improves traction.



The All-Wheel Drive Buggy is equipped with a powerful steering drive motor for optimum performance. A single over-sized tire provides superior traction.

BATTERY-POWERED POWER BUGGY

The **WBH-16BAT** redefines productivity with **zero emissions** and ultra-quiet operation, making it the go-to solution for interior demolition and environmentally sensitive job sites.



WBH-16BAT

16 cu. ft. capacity

*Vanguard 48V lithium-ion battery powered
with 8 hours of battery life*

Designed for non-stop performance, it boasts an impressive 8-hours of battery life and a 16 cu. ft. capacity payload to handle your toughest workloads with ease.

Dual drive motors ensure superior traction and control, while the hydraulic dump system allows for quick, effortless unloading.

Convenience meets innovation with an onboard charger and a user-friendly 4.3-inch digital display, keeping operators informed and ready to work.

Built to our legendary standards, the WBH-16BAT delivers the durability you expect, with the added benefits of cleaner, quieter, and sustainable performance.

- **Long-lasting Vanguard 48V 7kWh lithium-ion battery** offers up to 8-hours of run time.
- **Dual drive motors** for superior traction, efficiency, and performance.
- **Convenient 4.3-inch digital display monitor and onboard battery charger.**
- **Travel speeds up to 6 mph** for faster job site movement.
- **16 cu. ft. polyethylene tub** with a robust 2,500 lb payload capacity.
- **88-degree dump angle** for complete material clearing.

TRACK DRIVE POWER BUGGY

The WTB-16 models feature an aggressive track pattern, enabling the buggy to travel effortlessly through soft soils and muddy site conditions.

The WTB-16 is engineered with top quality components and built with the attention to detail that has made MQ Whiteman the leader in motorized buggies.



WTB-16PD

*16 cu. ft. capacity
Pivot dump tub*



WTB-16

*16 cu. ft. capacity
Straight dump tub*

Both models feature polyethylene tubs. The WTB-16PD includes a pivot dump tub, while the WTB-16 has a standard straight dump tub.

- **Innovative WTB-16PD model** features a pivot dump tub capable of rotating up to 180 degrees, to easily and precisely deliver material.
- **Optimal traction and durability** assured by a steel imbedded ladder track design.
- **Rugged undercarriage guide wheels** are ductile cast iron.
- **Low maintenance hydraulic design** eliminates wear parts such as belt-drives and drive couplers.
- **High torque drive motors** propel the buggy through tough conditions and offer fail-safe braking.
- **Long run times** are achieved with 5 gal. capacity fuel tank.
- **Versatile tub offers 16 ft.³ (2,500 LB.) capacity** and polyethylene construction for easy cleaning.
- **Narrow width** allows the buggy to pass through doorways or confined areas.
- **Travel efficiently around the site** for superior traction, efficiency, and performance.
- **Easy steering dual control levers** allow the operator to control the unit while minimizing fatigue.
- **Powerful and reliable Honda GX690 engine** produces 22 horsepower.

MQ WHITEMAN

FEATURES: TRACK DRIVE POWER BUGGY



Dual control handles provide consistent tracking, easy steering, and minimized operator fatigue. (WTB-16 shown)



Hand and foot controls facilitate tub rotating and dumping. (WTB-16PD shown)



100% hydraulic drive. No V belts, pulleys, clutches or mechanical gear reductions.



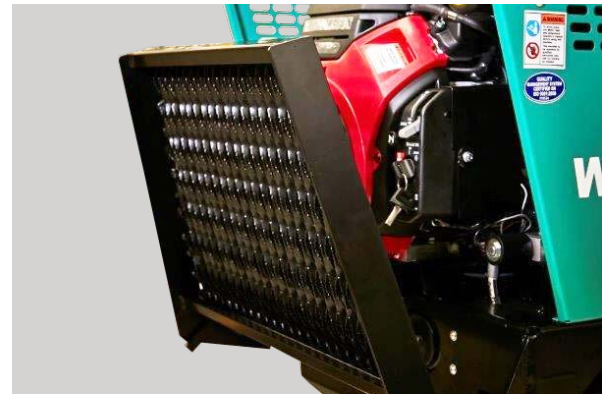
Front panel raises to provide complete service access.



Aggressive tack pattern for use in soft soil to muddy site conditions.



Premier high torque Poclain hydraulic motors feature fail-safe brakes.



Folding foot plate allows operator to walk behind machine when used in confined areas. Perforated platform prevents material build up.

SPECIFICATIONS

		TRACK-DRIVEN							
Models		WTB-16	WTB-16PD	WBH-16BAT	WBH-16F	WBH-16EF	WBH-16EAWDF	WBH-21EF	WBH-21EFP
PAYLOAD	Capacity CF. (Cu Meter)	16 (0.453)	16 (0.453)	16 (0.453)	16 (0.453)	16 (0.453)	16 (0.453)	21 (0.590)	21 (0.590)
	Bucket Material	Polyethylene	Polyethylene	Polyethylene	Polyethylene	Polyethylene	Polyethylene	Polyethylene	Polyethylene
	Tub Discharge Direction	Straight Dump	Pivot Dump up to 180°	Straight Dump	Straight Dump	Straight Dump	Straight Dump	Straight Dump	Straight Dump
	Max Load: Dual Wheels lbs. (kg)	2,500 (1,134)	2,500 (1,134)	2,500 (1,133.8)	2,500 (1,133.8)	2,500 (1,133.8)	2,500 (1,133.8)	3,200 (1,451)	3,200 (1,451)
	Max Load: Outer Wheels Removed, lbs. (kg)	N/A	N/A	N/A	1,000 (453)	1,000 (453)	1,000 (453)	N/A	N/A
PERFORMANCE	Engine	Honda 22 HP (16.4 kW)	Honda 22 HP (16.4 kW)	Vanguard 48V 7kWh Battery	Honda 11.9 HP (8.8 kW)	Honda 11.9 HP (8.8 kW)	Vanguard 18 HP (13.4 kW)	Vanguard 18 HP (13.4 kW)	Vanguard Propane 18 HP (13.4 kW)
	Starting System	Electric	Electric	Electric	Recoil	Recoil and Electric	Recoil and Electric	Recoil and Electric	Recoil and Electric
	Fuel Capacity: gal. (L)/ Runtime hr.	5 (18.9)	5 (18.9)	8 hours	4.8 (18.1)	4.8 (18.1)	4.8 (18.1)	4.8 (18.1)	7.5 (28.4)
	Travel Speed: MPH (kmh)	5.1 (8.2) Empty 4.7 (7.6) Loaded	5.1 (8.2) Empty 4.7 (7.6) Loaded	6 (9.7)	7.25 (11.6)	7.25 (11.6)	7.25 (11.6) Standard 5.3 (8.52) Traction assist 6.3 (10.13) AWD	7.25 (11.6)	7.25 (11.6)
	Gradeability	Uphill Max. 20% (10 degree) Side Max. 10% (6 degree)	Uphill Max. 20% (10 degree) Side Max. 10% (6 degree)	Max. 10% (6 degree)	Max. 10% (6 degree)	Max. 10% (6 degree)	Max. 10% (6 degree)	Max. 10% (6 degree)	Max. 10% (6 degree)
DIMENSIONS	Wheel Base: in. (cm)	N/A	N/A	N/A	43 (109.2)	43 (109.2)	43 (109.2)	43 (109.2)	43 (109.2)
	Width: Standard Dual Wheels in. (cm) (Track)	35.5 (90.2)	35.5 (90.2)	39.6 (100.6)	44 (111.7)	44 (111.7)	44 (111.7)	44 (111.7)	44 (111.7)
	Length with foot plate extended: in. (cm)	90.5 (229.9)	110.2 (280)	102 (259.1)	103 (261.6)	103 (261.6)	103 (261.6)	103 (261.6)	103 (261.6)
	Height: in. (cm)	56.5 (143.5)	55.6 (141.2)	53.1 (140)	51 (129.5)	51 (129.5)	51 (129.5)	51 (129.5)	51 (129.5)
	Weight: lbs. (kg)	1,896 (860)	2,138 (970)	1,475 (669)	1,351 (612.8)	1,363 (618.2)	1,493 (677.2)	1,492 (676.6)	1,492 (676.7)

- MQ Zero® Battery Powered
- Propane Powered

* Actual capacity may vary depending on the type of material being transported.

Engine power ratings are calculated by the individual engine manufacturer and the rating method may vary among engine manufacturers. Multiquip Inc. and its subsidiary companies makes no claim, representation or warranty as to the power rating of the engine on this equipment and disclaims any responsibility or liability of any kind whatsoever with respect to the accuracy of the engine power rating. Users are advised to consult the engine manufacturer’s owners manual and its website for specific information regarding the engine power rating.

All features and specifications are subject to change without notice.
© COPYRIGHT 2026, Multiquip Inc. Version 012726

