

PARTS MANUAL



Mikasa

MODEL MRH601DS
VIBRATORY ROLLER
(KUBOTA EA330-E3-NB3-HGMS-1 DIESEL ENGINE)

Revision #2 (06/19/26)

To find the latest revision of this publication or associated operation manual, visit our website at: www.multiquip.com



MRH601DS
Vibratory Roller

Explanation of Code in Remarks Column..... 4
Suggested Spare Parts 5

Component Drawings

Nameplates and Decals 6-7
Axle and Vibrator Assembly.....8-11
Body Assembly 12-17
Hydraulic System Assembly 18-21
Electric Device Assembly 22-25
Deadman System Control Assembly 26-29
Engine Service Parts 30-31

NOTICE
Specifications and part numbers are subject to change without notice.

EXPLANATION OF CODE IN REMARKS COLUMN

The following section explains the different symbols and remarks used in the Parts section of this manual. Use the help numbers found on the back page of the manual if there are any questions.

NOTICE

The contents and part numbers listed in the parts section are subject to change without notice. Multiquip does not guarantee the availability of the parts listed.

SAMPLE PARTS LIST

NO.	PART NO.	PART NAME	QTY.	REMARKS
1	12345	BOLT	1	INCLUDES ITEMS W/%
2%		WASHER, 1/4 IN.		NOT SOLD SEPARATELY
2%	12347	WASHER, 3/8 IN. ...	1	MQ-45T ONLY
3	12348	HOSE	A/R	MAKE LOCALLY
4	12349	BEARING	1	S/N 2345B AND ABOVE

NO. Column

Unique Symbols — All items with same unique symbol (@, #, +, %, or >) in the number column belong to the same assembly or kit, which is indicated by a note in the “Remarks” column.

Duplicate Item Numbers — Duplicate numbers indicate multiple part numbers, which are in effect for the same general item, such as different size saw blade guards in use or a part that has been updated on newer versions of the same machine.

NOTICE

When ordering a part that has more than one item number listed, check the remarks column for help in determining the proper part to order.

PART NO. Column

Numbers Used — Part numbers can be indicated by a number, a blank entry, or TBD.

TBD (To Be Determined) is generally used to show a part that has not been assigned a formal part number at the time of publication.

A blank entry generally indicates that the item is not sold separately or is not sold by Multiquip. Other entries will be clarified in the “Remarks” Column.

QTY. Column

Numbers Used — Item quantity can be indicated by a number, a blank entry, or A/R.

A/R (As Required) is generally used for hoses or other parts that are sold in bulk and cut to length.

A blank entry generally indicates that the item is not sold separately. Other entries will be clarified in the “Remarks” Column.

REMARKS Column

Some of the most common notes found in the “Remarks” Column are listed below. Other additional notes needed to describe the item can also be shown.

Assembly/Kit — All items on the parts list with the same unique symbol will be included when this item is purchased.

Indicated by:

“INCLUDES ITEMS W/(unique symbol)”

Serial Number Break — Used to list an effective serial number range where a particular part is used.

Indicated by:

“S/N XXXXX AND BELOW”

“S/N XXXX AND ABOVE”

“S/N XXXX TO S/N XXX”

Specific Model Number Use — Indicates that the part is used only with the specific model number or model number variant listed. It can also be used to show a part is NOT used on a specific model or model number variant.

Indicated by:

“XXXXX ONLY”

“NOT USED ON XXXX”

“Make/Obtain Locally” — Indicates that the part can be purchased at any hardware shop or made out of available items. Examples include battery cables, shims, and certain washers and nuts.

“Not Sold Separately” — Indicates that an item cannot be purchased as a separate item and is either part of an assembly/kit that can be purchased, or is not available for sale through Multiquip.

SUGGESTED SPARE PARTS

MIKASA MRH601DS VIBRATORY ROLLER 1 TO 3 UNITS

Qty.	P/N	Description
2	954001380	ELEMENT, HYDRAULIC OIL
1	070100361	V-BELT, A-36 (VIBRATOR)
1	954408580	STRAINER, WATER TANK
2	518910020	SPRINKLING PIPE ASSY.
1	956100034	THROTTLE WIRE
1	517342410	CABLE, PUSH-PULL
4	939010350	SHOCK ABSORBER

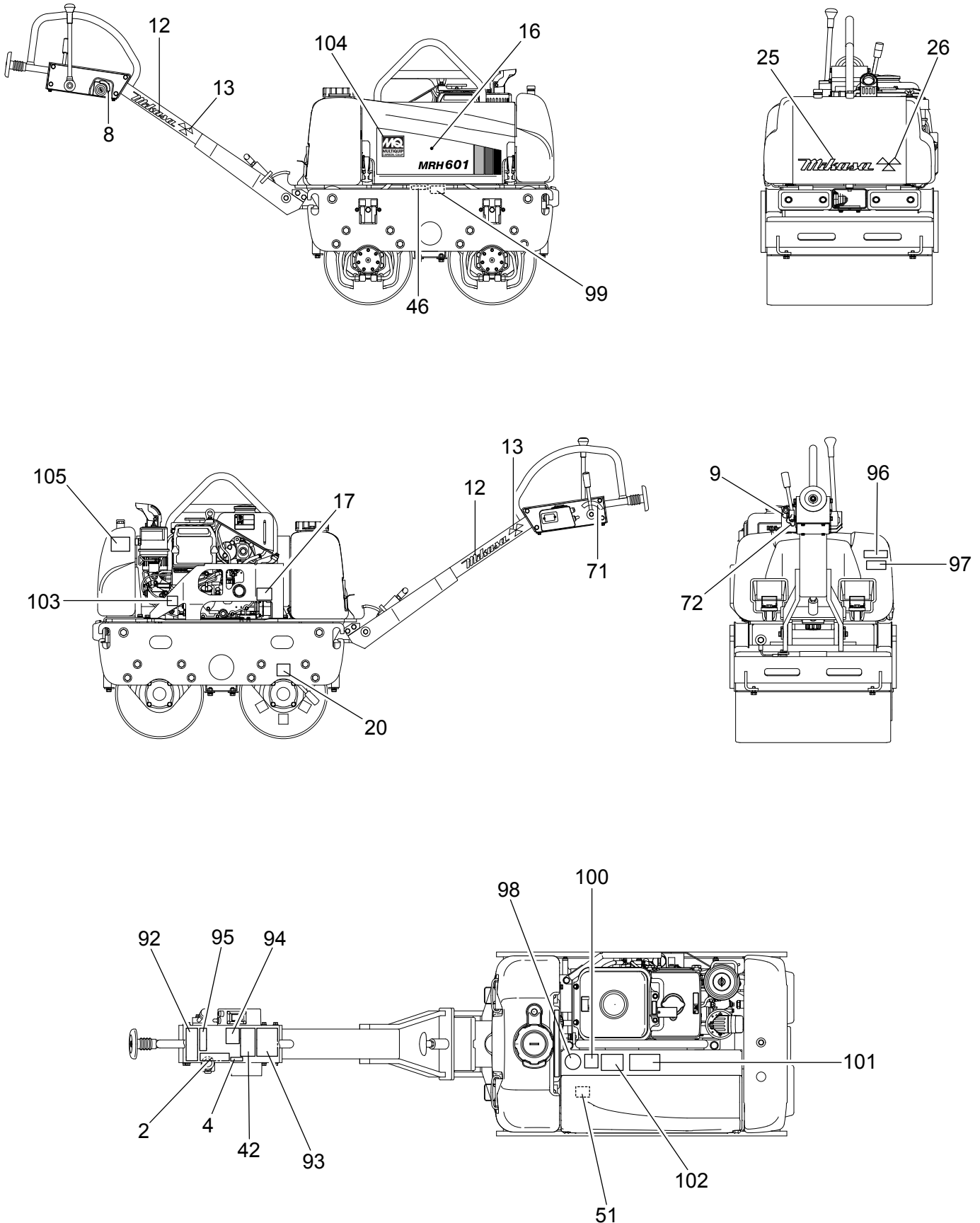
KUBOTA EA330-E3-NB3-HGMS DIESEL ENGINE 1 TO 3 UNITS

Qty.	P/N	Description
3	1497111180	ELEMENT, AIR CLEANER
3	1T02143560	ELEMENT, FUEL FILTER
3	1491132110	FILTER, OIL
3	0481140140	O-RING, OIL FILTER
1	1685165512	GLOW PLUG
1	1G82097010	V-BELT
1	1252141030	CAP, FUEL TANK
1	1254541350	FILTER, FUEL TANK
1	6C04055412	SWITCH, STARTER
2	1524863700	KEY, STARTER SWITCH
1	1152139013	SWITCH, OIL

NOTICE

Part numbers on this Suggested Spare Parts list may supersede/replace the part numbers shown in the following parts lists.

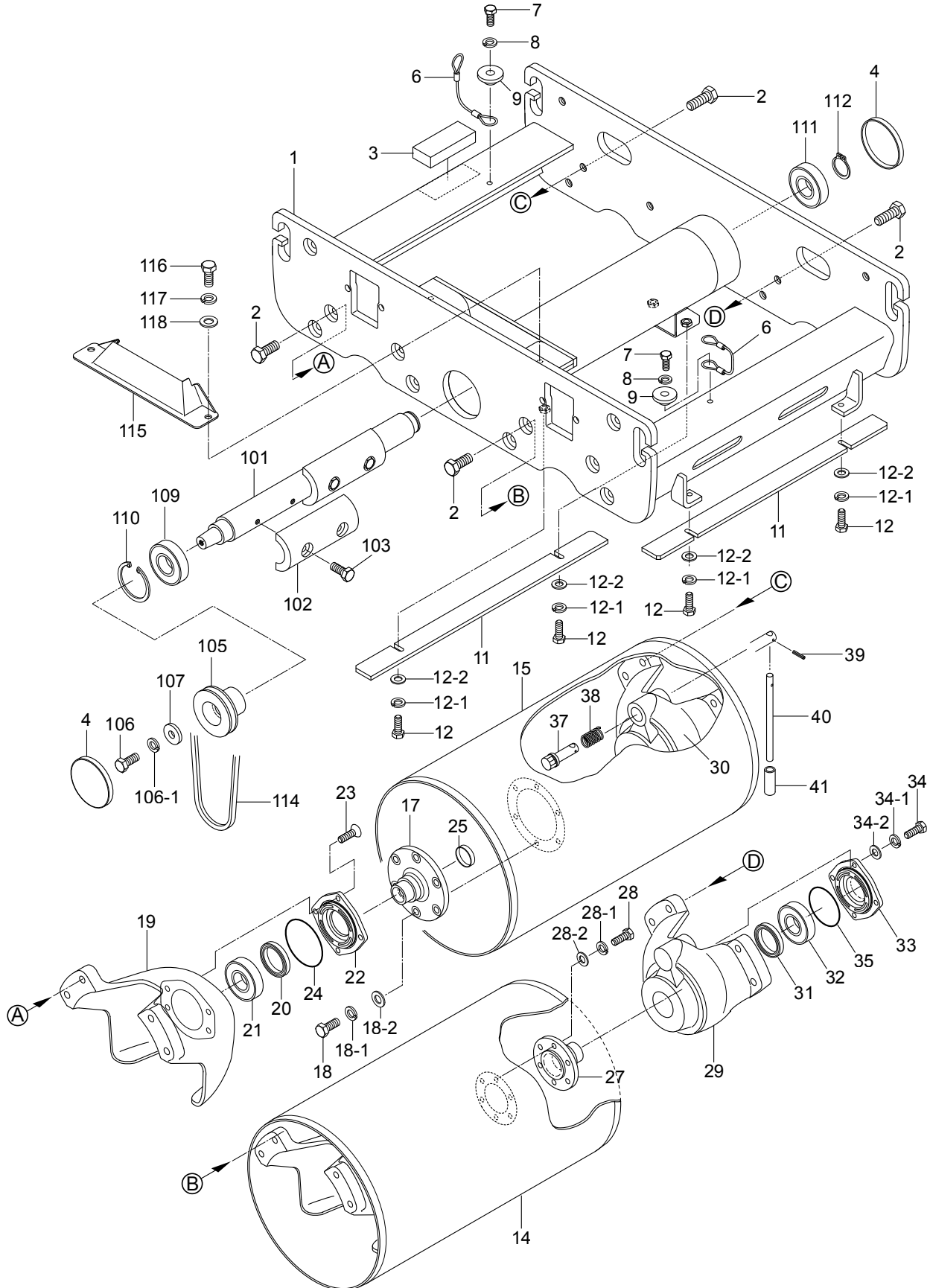
NAMEPLATES AND DECALS



NAMEPLATES AND DECALS

<u>NO.</u>	<u>PART NO.</u>	<u>PART NAME</u>	<u>QTY.</u>	<u>REMARKS</u>
2	920108070	DECAL: FORWARD AND REVERSE	1	
4	920217900	DECAL: GLOW LAMP	1	
8	920215140	LABEL: MAIN SWITCH	1	
9	920217140	DECAL: HORN (ICON)	1	
12	920217130	DECAL: MIKASA MARK (W) 200L	2	
13	920217110	DECAL: MIKASA MARK 35X70	2	
16	920217340	DECAL: MODEL (OR)	1	
17	920217860	DECAL: SPRINKLER	1	
20	920217660	DECAL: CAUTION (BRAKE)	1	
25	920217120	DECAL: MIKASA MARK (W) 250L	1	
26	920217100	DECAL: MIKASA MARK 40X80	1	
42	920202910	DECAL: BUZZER (HYDRAULIC)	1	
46	920112570	DECAL: V-BELT, A-36	1	
51	920217490	DECAL: MODEL	1	
71	920206080	DECAL: E/G THROTTLE DIAL/E	1	
72	920217150	DECAL: HEAD LAMP ICON	1	
92	920202920	DECAL: CAUTION (BRAKE)	1	
93	920205640	DECAL: WARNING (PARKING)	1	
94	920212600	DECAL: CAUTION (VIB. ON-OFF)	1	
95	920214100	DECAL: E/G FIRE WARNING	1	
96	920200320	DECAL: WATER TANK/EXP	1	
97	920104280	DECAL: CAUTION/DRAINAGE	1	
98	920203330	EAR PROTECTION LABEL	1	
99	920206280	DECAL: DANGER	1	
100	920206290	DECAL: CAUTION (MANUAL/EXP)	1	
101	920217830	DECAL: OPERATION	1	
102	920217840	DECAL: WARNING (SLOPE)	1	
103	920217850	DECAL: E/G SET R.P.M.	1	
104	920201910	DECAL: MQ MARK 110X100	1	
105	920213000	DECAL, OIL TANK/EXP	1	

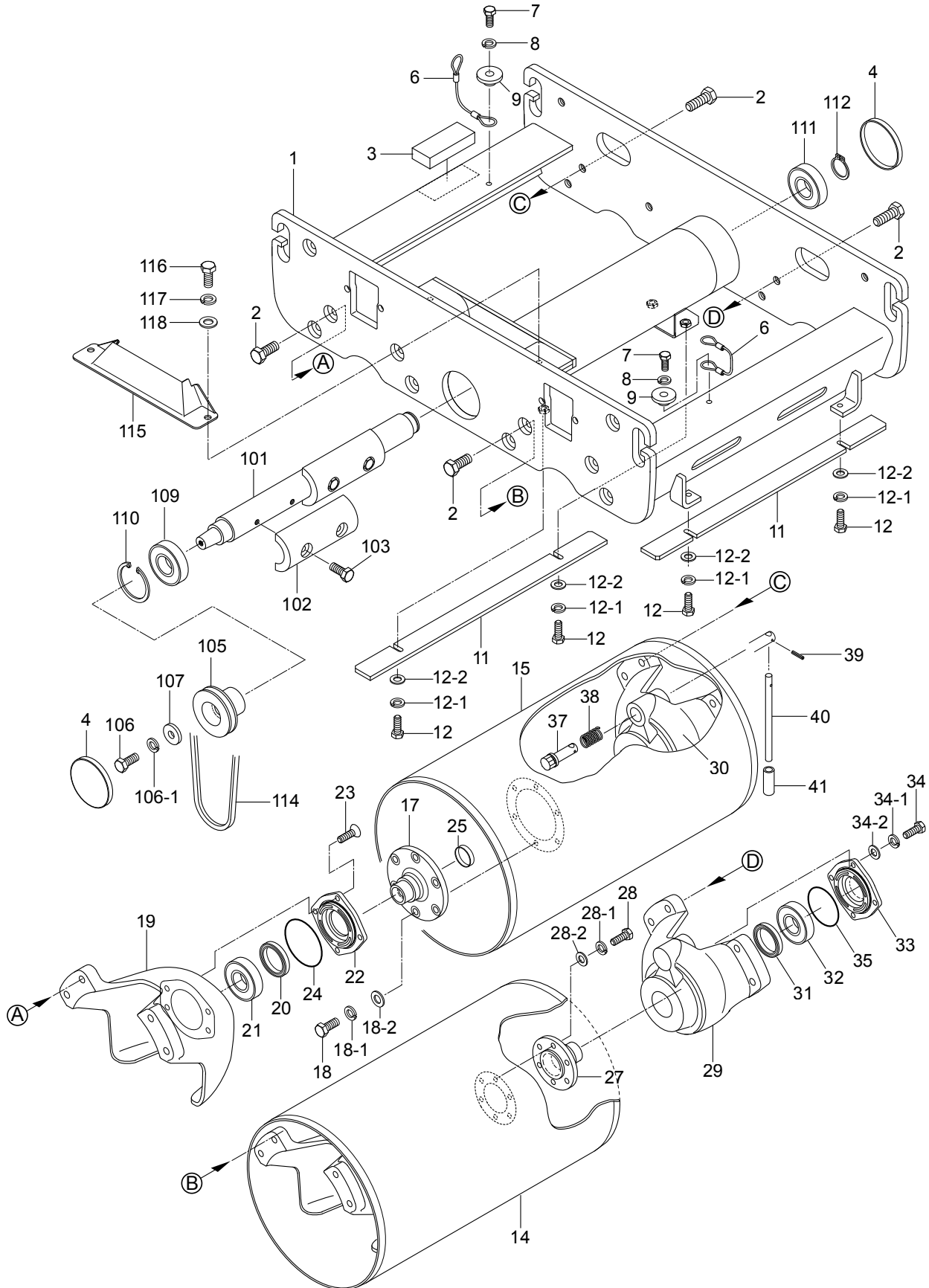
AXLE AND VIBRATOR ASSY.



AXLE AND VIBRATOR ASSY.

<u>NO.</u>	<u>PART NO.</u>	<u>PART NAME</u>	<u>QTY.</u>	<u>REMARKS</u>
1	518120790	FRAME	1	
2	001221435	BOLT 14X35	16	
3	518466220	RUBBER PLATE	1	
4	953408650	SEAL CAP 100X10	2	
6	518466210	WIRE ROPE	2	
7	012212035	BOLT 12X35	4	REPLACES P/N 001221235
8	030212300	WASHER, LOCK M12	4	
9	518466180	SPACER 13X19X40XL15	4	
11	518351420	SCRAPER	4	
12	0105091025	BOLT 10X25	8	REPLACES P/N 001221025
12-1	030210250	WASHER, LOCK M10	8	
12-2	031110160	WASHER, FLAT M10	8	
14	518120730	DRUM (F)	1	
15	518120740	DRUM (R)	1	
17	518351430	FLANGE	2	
18	012010030	BOLT 10X30	12	REPLACES P/N 001221030
18-1	030210250	WASHER, LOCK M10	12	
18-2	031110160	WASHER, FLAT M10	12	
19	518120620	BRACKET, REAR DRUM/R	2	
20	060405010	OIL SEAL	2	
21	046006308	BEARING	2	
22	518351190	BEARING COVER (R)	2	
23	009120412	SUNK HEAD BOLT 8X25	8	
24	050300950	O-RING	2	
25	953408640	SEAL CAP 32X7	2	
27	518351440	DRUM SHAFT (L)	2	
28	012010030	BOLT 10X30	12	REPLACES P/N 001221030
28-1	030210250	WASHER, LOCK M10	12	
28-2	031110160	WASHER, FLAT M10	12	
29	518120630	BRACKET, REAR DRUM/LF	1	
30	518120640	BRACKET, REAR DRUM/LR	1	
31	060405010	OIL SEAL	2	
32	046006308	BEARING	2	
33	518351200	BEARING COVER (L)	2	
34	011208025	BOLT 8X25	8	REPLACES P/N 001220825
34-1	030208200	WASHER, LOCK M8	8	
34-2	0401450080	WASHER, FLAT M8	8	REPLACES P/N 031108160
35	050300950	O-RING	2	
37	518466110	LOCK PIN, BRAKE	1	
38	518466160	SPRING, BRAKE	1	
39	025405025	SPRING PIN 5X25	1	
40	518466120	LOCK HANDLE	1	
41	953408890	CAP, BRAKE	1	
101	518351380	ROTARY SHAFT	1	
102	518465960	ECCENTRIC ROTATOR	2	
103	012210035	BOLT 10X35	4	REPLACES P/N 001221035
105	518465910	PULLEY	1	

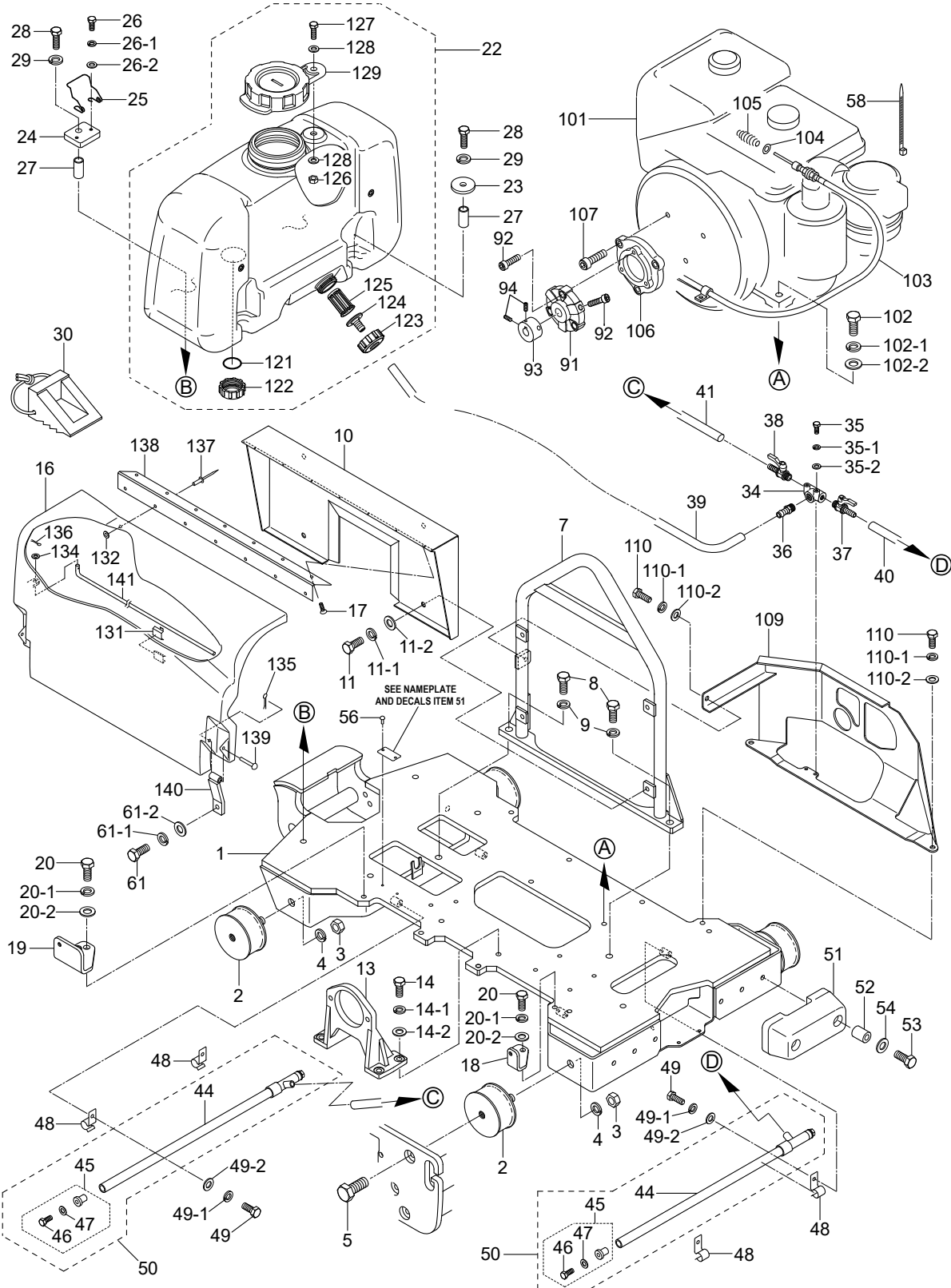
AXLE AND VIBRATOR ASSY. (CONT'D.)



AXLE AND VIBRATOR ASSY. (CONT'D.)

<u>NO.</u>	<u>PART NO.</u>	<u>PART NAME</u>	<u>QTY.</u>	<u>REMARKS</u>
106	012210035	BOLT 10X35	1.....	REPLACES P/N 001221035
106-1	030210250	WASHER, LOCK M10	1	
107	952402330	WASHER	1	
109	046006308	BEARING	1	
110	080100900	STOP RING	1	
111	046006208	BEARING	1	
112	080200400	STOP RING	1	
114	070100361	V-BELT A-36	1	
115	518351390	GUARD, V-BELT	1	
116	012210020	BOLT 10X20	2.....	REPLACES P/N 001221020
117	030210250	WASHER, LOCK M10	2	
118	031110160	WASHER, FLAT M10	2	

BODY ASSY.



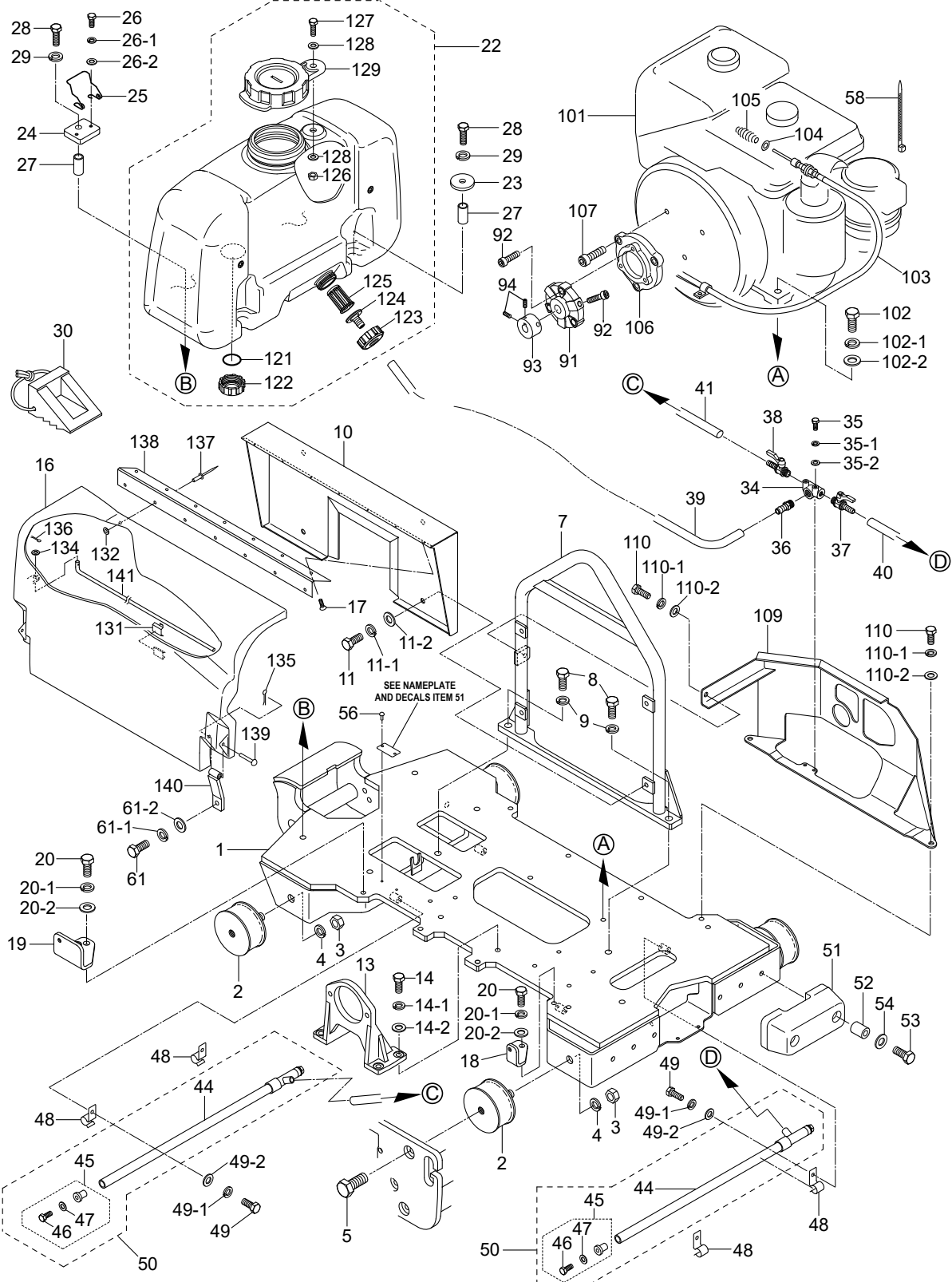
NOTES:

- ① ITEMS 93 AND 94 IS USED FOR EQUIPMENT WITH S/N L10001 AND ABOVE.

BODY ASSY.

<u>NO.</u>	<u>PART NO.</u>	<u>PART NAME</u>	<u>QTY.</u>	<u>REMARKS</u>
1	518120820	BASE	1	
2	939010350	SHOCK ABSORBER	4	
3	020316130	NUT M16	4	
4	030216400	WASHER, LOCK M16	4	
5	001221625	BOLT 16X25	4	
7	518218650	HOOK	1	
8	001221435	BOLT 14X35	2	
9	030214350	WASHER, LOCK M14	2	
10	518218660	COVER, ENGINE	1	
11	012210020	BOLT 10X20	4	REPLACES P/N 001221020
11-1	030210250	WASHER, LOCK M10	4	
11-2	031110160	WASHER, FLAT M10	4	
13	518218620	PUMP BRACKET	1	
14	012010030	BOLT 10X30	4	REPLACES P/N 001221030
14-1	030210250	WASHER, LOCK M10	4	
14-2	031110160	WASHER, FLAT M10	4	
16	518920020	BONNET COVER	1	
17	092004008	SCREW 4X8	7	
18	518467210	STAY, COVER (R)	1	
19	518467220	STAY, COVER (L)	1	
20	0105091025	BOLT 10X25	2	REPLACES P/N 001221025
20-1	030210250	WASHER, LOCK M10	2	
20-2	031110160	WASHER, FLAT M10	2	
22	518930020	WATER TANK, ORANGE	1	
23	952405950	WASHER	2	
24	518466050	PLATE, WATER TANK	2	
25	515449870	HOLDER, STOPPER	2	
26	011006010	BOLT 6X10	4	REPLACES P/N 001220610
26-1	030206150	WASHER, LOCK M6	4	
26-2	952404470	WASHER, FLAT M6.....	4	REPLACES P/N 031106100
27	506434690	SPACER, WATER TANK	4	
28	001221253	BOLT 12X65	4	
29	030212300	WASHER, LOCK M12	4	
30	517338540	STOPPER	2	
34	518466200	SEPARATE PIPE	1	
35	011206020	BOLT 6X20	2	REPLACES P/N 001220620
35-1	030206150	WASHER, LOCK M6	2	
35-2	952404470	WASHER, FLAT M6.....	2	REPLACES P/N 031106100
36	954406210	CONNECTOR 3/8X12	1	
37	954404221	COCK PT1/4, (AL)/L	1	
38	954403241	COCK PT1/4, (AL)/R	1	
39	959028721	HOSE	1	
40	515450440	WATER HOSE (R)	1	

BODY ASSY. (CONT'D.)



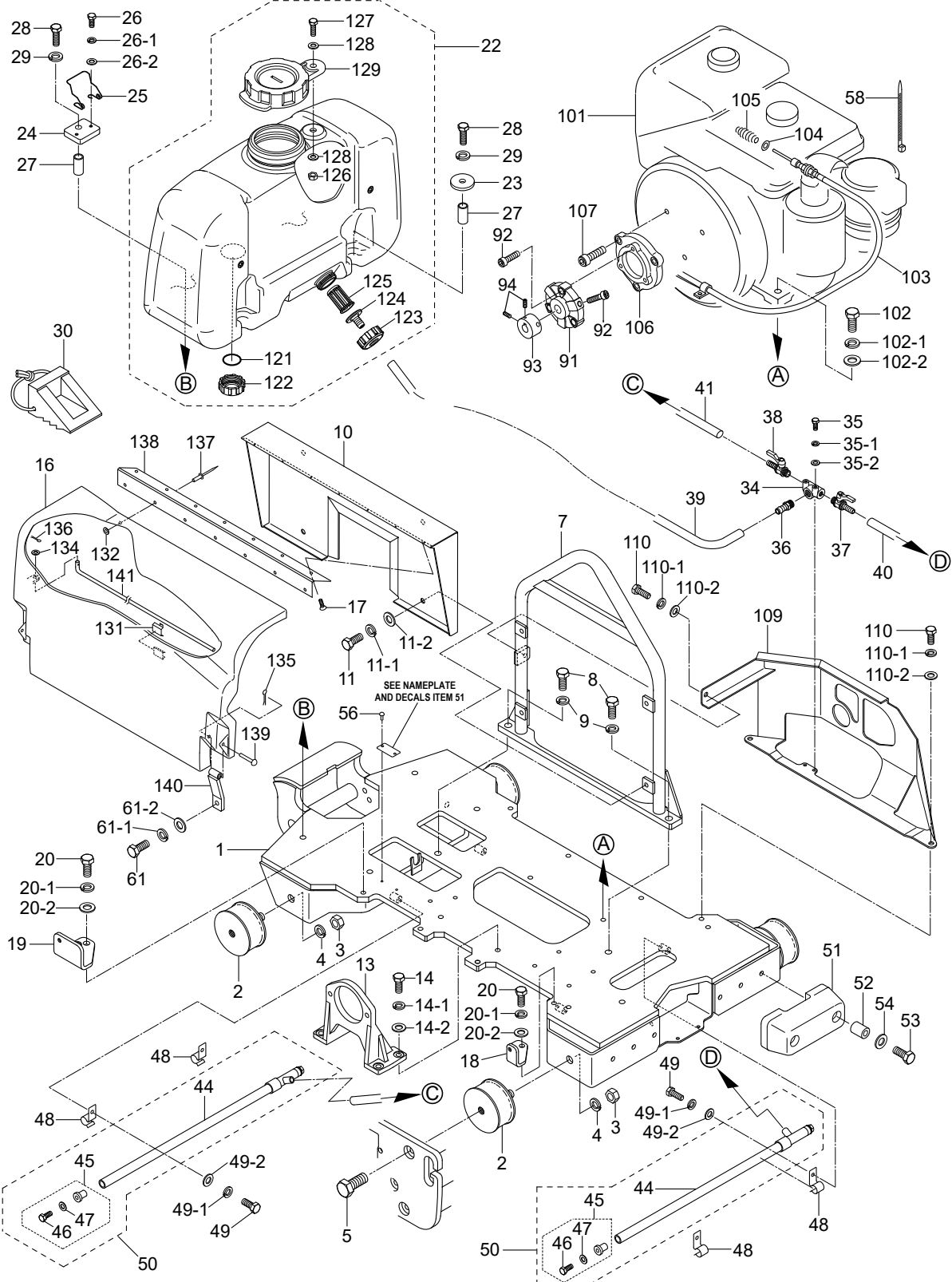
NOTES:

⚠ ITEMS 93 AND 94 IS USED FOR EQUIPMENT WITH S/N L10001 AND ABOVE.

BODY ASSY. (CONT'D.)

<u>NO.</u>	<u>PART NO.</u>	<u>PART NAME</u>	<u>QTY.</u>	<u>REMARKS</u>
41	518466320	WATER HOSE (R)	1	
44#	518351530	SPRINKLING PIPE	2	
45#	515910050	CAP ASSY, W/BOLT, WASHER.....	4	INCLUDES ITEMS W/ @
46@	011206020	BOLT 6X20	4	REPLACES P/N 001220620
47@	952404470	WASHER, FLAT M6.....	4	REPLACES P/N 031106100
48	515449900	CLAMP	4	
49	001220610	BOLT 6X10 T	4	
49-1	030206150	WASHER, LOCK M6	4	
49-2	031106100	WASHER, FLAT M6	4	
50	518910020	SPRINKLING PIPE ASSY.....	2	INCLUDES ITEMS W/ #
51	515336210	BUMPER	2	
52	515449720	SPACER, BUMPER	4	
53	012210040	BOLT 10X40	4	REPLACES P/N 001221040
54	031110160	WASHER, FLAT M10	4	
56	233010020	RIVET	2	
58	507010110	CLAMP	1	
61	014208020	BOLT 8X20	2	REPLACES P/N 001220820
61-1	030208200	WASHER, LOCK M8	2	
61-2	0401450080	WASHER, FLAT M8.....	2	REPLACES P/N 031108160
91	518351500	CENTER FLEX	1	S/N K10020 AND BELOW
91	918359470	CENTER FLEX/DAIKIN	1	S/N L10001 AND ABOVE
92	009110038	SOCKET HEAD BOLT 8X30 ZN	3	S/N K10020 AND BELOW
92	009110038	SOCKET HEAD BOLT 8X30 ZN	6	S/N L10001 AND ABOVE
93	518359310	KEY HUB H37.....	1	S/N L10001 AND ABOVE
94	098204010	HEX. SOCKET HEAD SETSCREW 4X10	2	S/N L10001 AND ABOVE
101	915533002	ENGINE,KUBOTA EA330-E3-NB3-HGMS	1	
102	012210035	BOLT 10X35	4	REPLACES P/N 001221035
102-1	030210250	WASHER, LOCK M10	4	
102-2	031110160	WASHER, FLAT M10	4	
103	956100034	THROTTLE WIRE	1	
104	58042	WASHER, FLAT M4.....	1	REPLACES P/N 031104080
105	402010110	COIL SPRING.....	1	REPLACES P/N 0830000010
106	518351240	COUPLING FLANGE	1	
107	009110070	SOCKET HEAD BOLT 10X25	3	
109	518218680	ENGINE GUARD	1	
110	012210020	BOLT 10X20	3	REPLACES P/N 001221020
110-1	030210250	WASHER, LOCK M10	4	
110-2	031110160	WASHER, FLAT M10	4	
121	050710120	O-RING	1	
122	953408610	CAP, DRAIN	1	
123	954408620	ADAPTER, HOSE NIPPLE	1	
124	954408730	HOSE, NIPPLE	1	
125	954408580	STRAINER	1	

BODY ASSY. (CONT'D.)



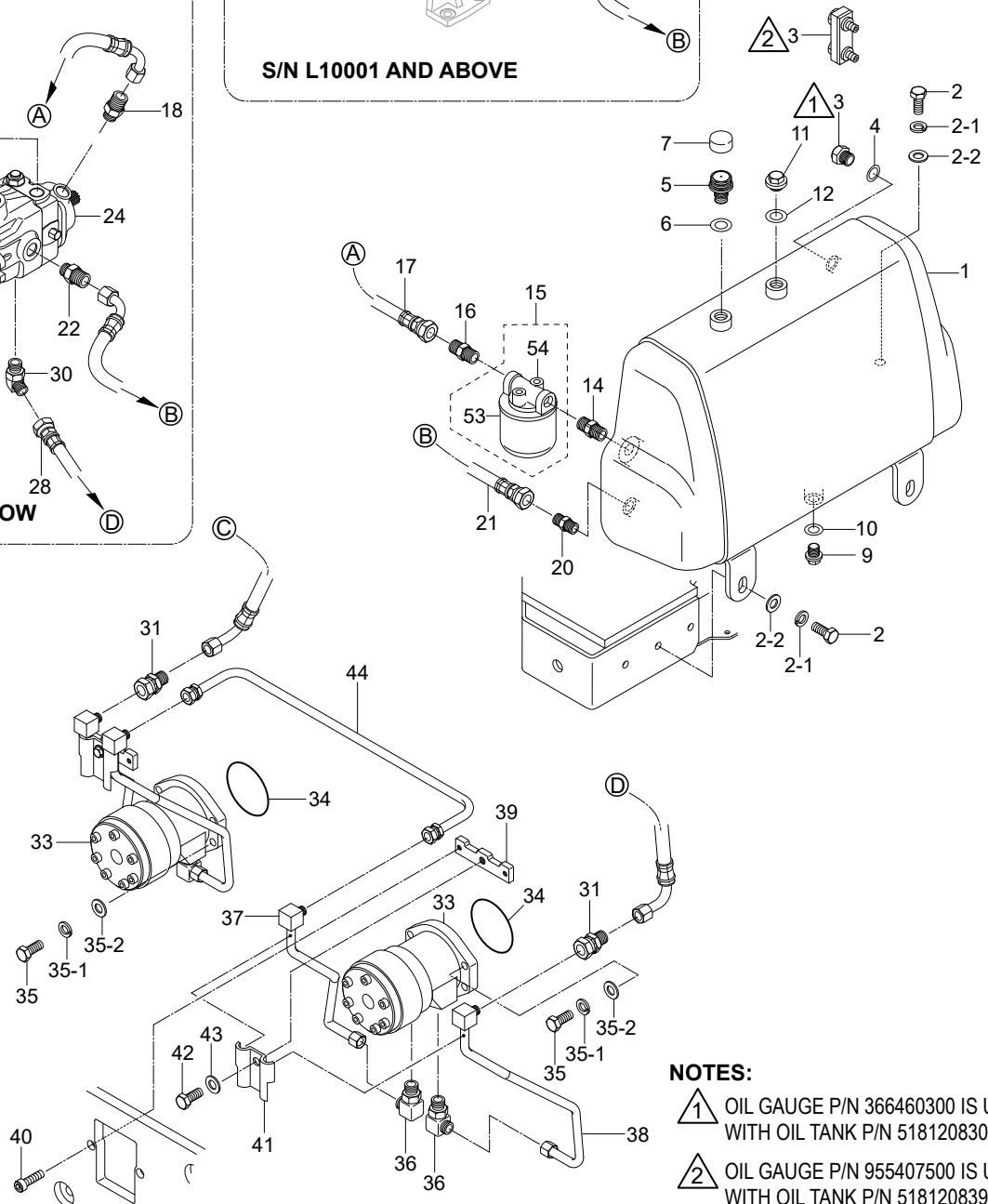
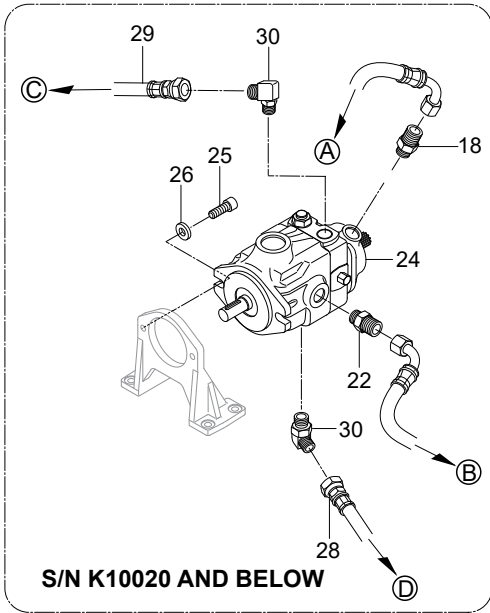
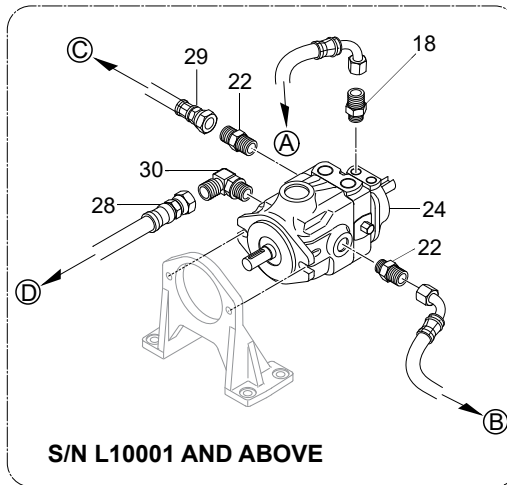
NOTES:

⚠ ITEMS 93 AND 94 IS USED FOR EQUIPMENT WITH S/N L10001 AND ABOVE.

BODY ASSY. (CONT'D.)

<u>NO.</u>	<u>PART NO.</u>	<u>PART NAME</u>	<u>QTY.</u>	<u>REMARKS</u>
126	022910280	NYLON NUT M10	1	
127	001241030	BOLT 10X30	1	
128	033910160	WASHER, FLAT M10	2	
129	954300342	CAP, WATER TANK	1	
131	518351590	HOLDER, ROD	1	
132	952408750	WASHER	7	
133	033910260	WASHER, FLAT M5	2	
134	033910270	WASHER, FLAT M6	1	
135	025911030	SNAP PIN	2	
136	025911020	SNAP PIN	1	
137	518010040	BLIND RIVET	7	
138	518218710	RUBBER HINGE	1	
139	518466260	BUTTON HEAD PIN, COVER	2	
140	518466290	BONNET STRAP	2	
141	518466250	ROD, COVER	1	

HYDRAULIC SYSTEM ASSY.



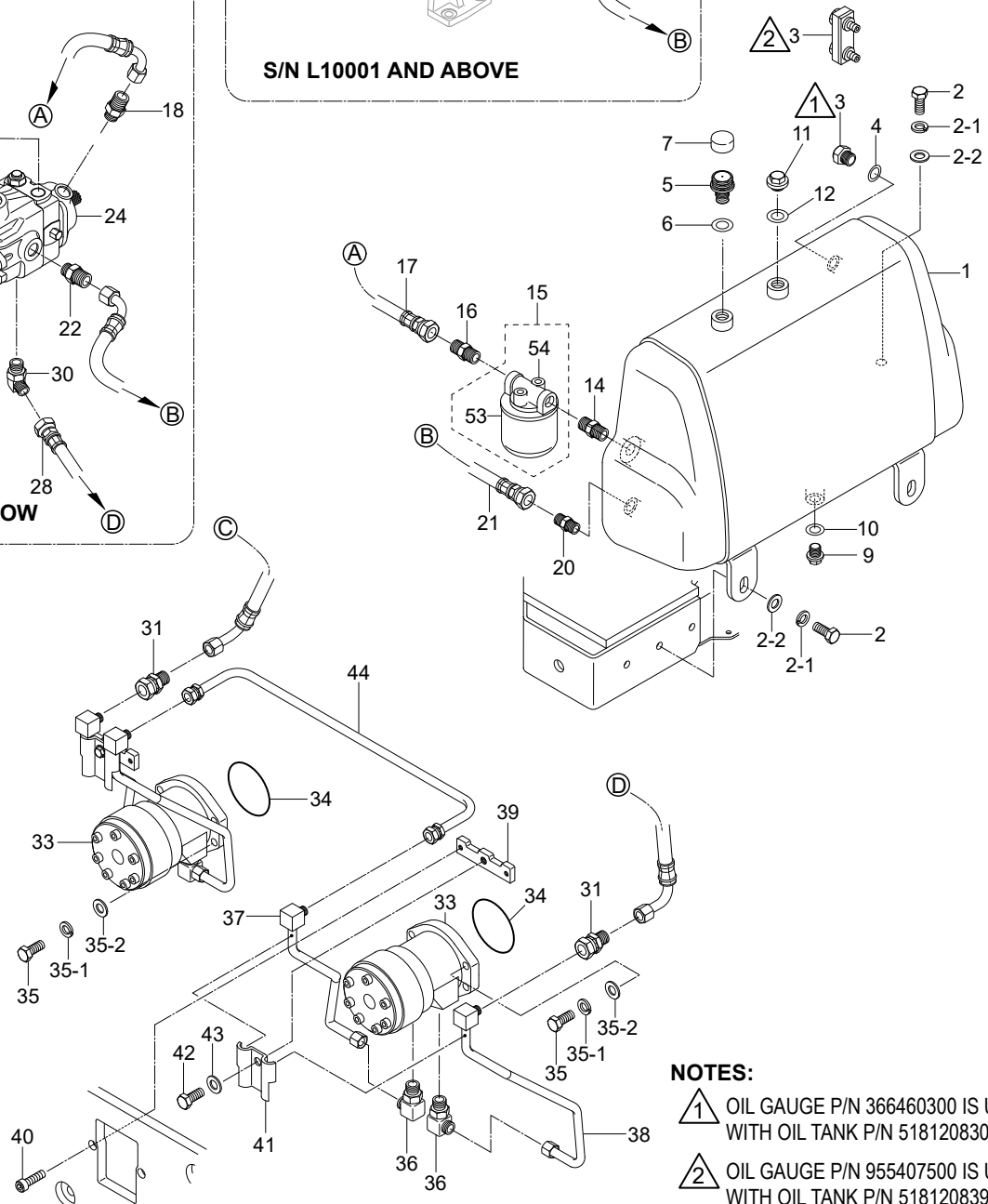
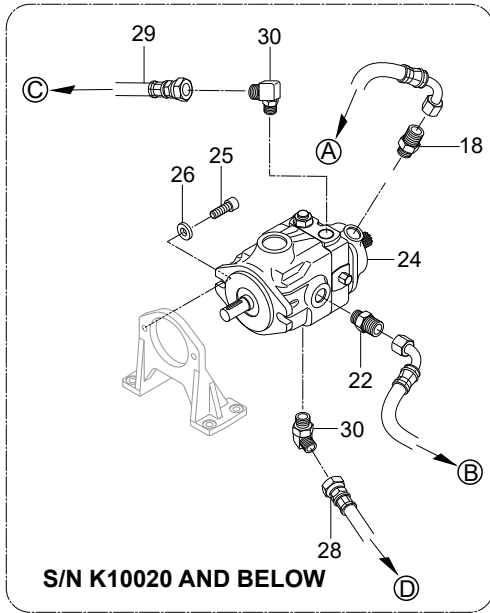
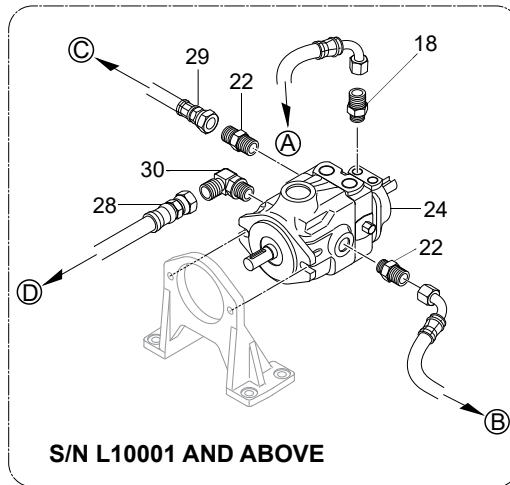
NOTES:

- 1 OIL GAUGE P/N 366460300 IS USE WITH OIL TANK P/N 518120830.
- 2 OIL GAUGE P/N 955407500 IS USE WITH OIL TANK P/N 518120839.

HYDRAULIC SYSTEM ASSY.

<u>NO.</u>	<u>PART NO.</u>	<u>PART NAME</u>	<u>QTY.</u>	<u>REMARKS</u>
1	518120839	OIL TANK	1.....	REPLACES P/N 518120830
2	0105091025	BOLT 10X25	4.....	REPLACES P/N 001221025
2-1	030210250	WASHER, LOCK M10	4	
2-2	031110160	WASHER, FLAT M10	4	
3	366460300	OIL GAUGE ASSY.	1.....	USE WITH P/N 518120830
3	955407500	OIL GAUGE ASSY.	1.....	USE WITH P/N 518120839
4	953404670	COPPER PACKING	1	
5	518466240	BREATHER, OIL TANK	1	
6	953402930	COPPER PACKING	1	
7	458451630	BREATHER CAP	1	
9	953405270	PLUG	1	
10	953405260	PACKING	1	
11	953405840	DRAIN PLUG	1	
12	953402930	COPPER PACKING	1	
14	954003000	NIPPLE	1	
15	954003080	OIL FILTER ASSY.	1.....	INCLUDES ITEM W/#
16	954003030	MALE CONNECTOR	1	
17	954002970	OIL HOSE	1	
18	954003020	MALE CONNECTOR, O-RING 1/2	1.....	S/N K10020 AND BELOW
18	954003490	MALE CONNECTOR, G3/8-G1/2	1.....	S/N L10001 AND ABOVE
20	954003070	MALE CONNECTOR	1	
21	954003050	OIL HOSE 3/8"	1	
22	954003060	MALE CONNECTOR, O-RING 3/8	1.....	S/N K10020 AND BELOW
22	954003060	MALE CONNECTOR, O-RING 3/8	2.....	S/N L10001 AND ABOVE
24	518120880	VARIABLE PUMP	1.....	S/N K10020 AND BELOW
24	518123510	VARIABLE PUMP, PV10	1.....	S/N L10001 AND ABOVE
25	009110019	SOCKET HEAD BOLT 10X30	2.....	S/N K10020 AND BELOW
25	001221030	BOLT 10X30 T	2.....	S/N L10001 AND ABOVE
26	952404110	COLLAR 10.5X22X5	2	
28	954002960	OIL HOSE 3/8 90-1005 320L	1.....	S/N K10020 AND BELOW
28	954003440	OIL HOSE 3/8 90-1005 610L	1.....	S/N L10001 AND ABOVE
29	954002950	OIL HOSE 3/8 90-1005 470L	1	
30	954002990	ELBOW 90°, PF3/8"	2.....	S/N K10020 AND BELOW
30	954002990	ELBOW 90°, PF3/8"	1.....	S/N L10001 AND ABOVE
31	954002980	CONNECTOR, SWIVEL PF3/8"	2	
33	518351480	OIL MOTOR	2	
34	050710060	O-RING	2	
35	012210035	BOLT 10X35	8.....	REPLACES P/N 001221035
35-1	030210250	WASHER, LOCK M10	8	
35-2	031110160	WASHER, FLAT M10	8	
36	954003040	CONNECTOR, ELBOW PF1/2"	4	
37	518466330	OIL PIPE (L)	2	
38	518466340	OIL PIPE (R)	2	
39	518466080	HOLDER, PIPE	2	
40	014208020	SOCKET HEAD BOLT 8X20	4.....	REPLACES P/N 001520820

HYDRAULIC SYSTEM ASSY. (CONT'D.)



NOTES:

- 1 OIL GAUGE P/N 366460300 IS USE WITH OIL TANK P/N 518120830.
- 2 OIL GAUGE P/N 955407500 IS USE WITH OIL TANK P/N 518120839.

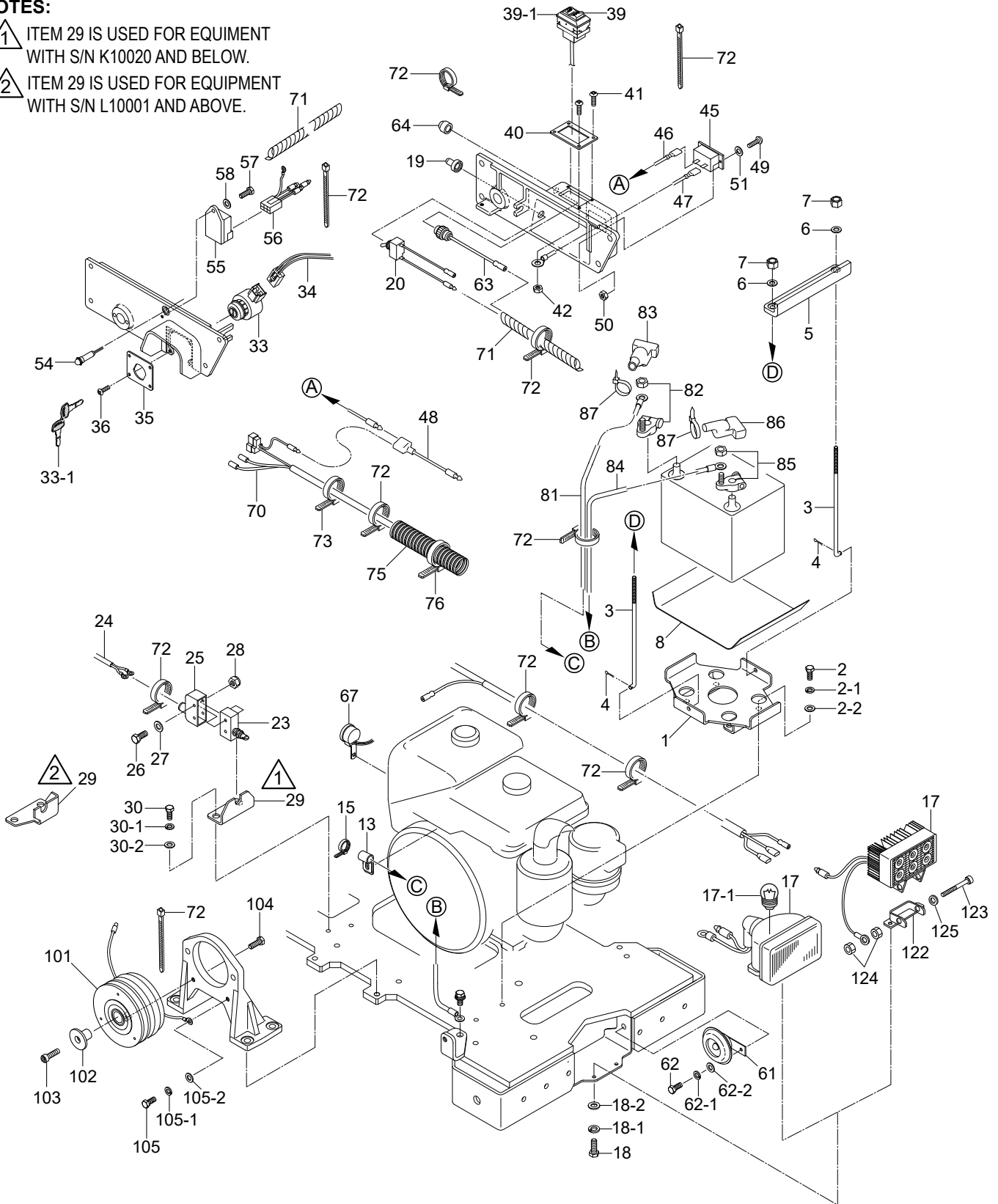
HYDRAULIC SYSTEM ASSY. (CONT'D.)

<u>NO.</u>	<u>PART NO.</u>	<u>PART NAME</u>	<u>QTY.</u>	<u>REMARKS</u>
41	518465970	GUARD, PIPE	2	
42	012210020	BOLT 10X20	2.....	REPLACES P/N 001221020
43	031110160	WASHER, FLAT M10	2	
44	518466360	OIL PIPE (A-B)	1	
53#	954001380	OIL ELEMENT	1	
54#	954003310	FILTER HEAD	1	

ELECTRIC DEVICE ASSY.

NOTES:

- 1 ITEM 29 IS USED FOR EQUIPMENT WITH S/N K10020 AND BELOW.
- 2 ITEM 29 IS USED FOR EQUIPMENT WITH S/N L10001 AND ABOVE.



ELECTRIC DEVICE ASSY.

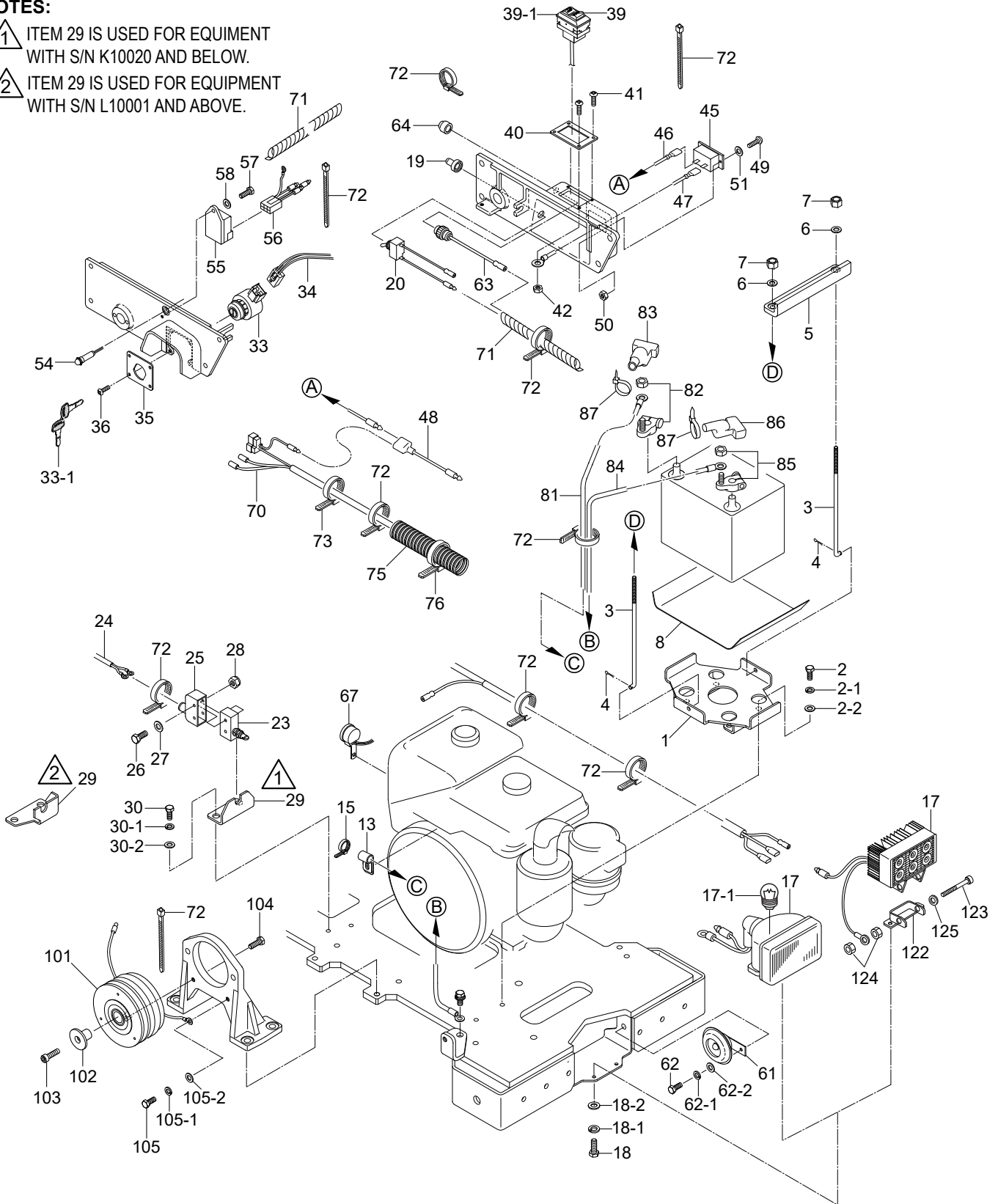
<u>NO.</u>	<u>PART NO.</u>	<u>PART NAME</u>	<u>QTY.</u>	<u>REMARKS</u>
1	518218670	BASE, BATTERY	1	
2	014208020	BOLT 8X20	4	REPLACES P/N 001220820
2-1	030208200	WASHER, LOCK	4	
2-2	0401450080	WASHER, FLAT	4	REPLACES P/N 031108160
3	515448210	ROD, BATTERY	2	
4	025910060	SNAP PIN	2	
5	518465980	BATTERY HOLDER	1	
6	952404470	WASHER, FLAT M6	2	REPLACES P/N 031106100
7	022710607	NYLON NUT M6	2	
8	601303150	RUBBER PLATE	1	
13	954406400	CLAMP	1	
15	506010070	CLAMP	1	
17	955200030	HEAD LAMP ASSY. 12V-25W.....	1	INCLUDES ITEMS W/@
17	955301160	HEAD LAMP ASSY., LED	1	
17-1@	955200060	PILOT LAMP, 12V	1	
18	0105050616	BOLT 6X15 T	2	REPLACES P/N 001220615
18-1	030206150	WASHER, LOCK M6	2	
18-2	952404470	WASHER, FLAT M6	2	REPLACES P/N 031106100
19	304402600	CAP	1	
20	515449910	SWITCH, W/CORD	1	
23	955405910	MICRO-SWITCH	1	
24	515453230	READ CORD, MICRO-SWITCH	1	
25	955405450	COVER, MICRO-SWITCH	1	
26	001200430	BOLT 4X30	2	
27	58042	WASHER, FLAT M4.....	2	REPLACES P/N 031104080
28	022710405	NYLON NUT M4	2	
29	518466060	STAY, SWITCH	1	S/N K10020 AND BELOW
29	518476270	STAY, LIMIT SWITCH	1	S/N L10001 AND ABOVE
30	014208020	BOLT 8X20	2	REPLACES P/N 001220820
30-1	030208200	WASHER, LOCK M8	2	
30-2	0401450080	WASHER, FLAT M8.....	2	REPLACES P/N 031108160
33	1G34763590	STARTER SWITCH ASSY.	1	INCLUDES ITEMS W/ \$
33-1\$	1524863700	KEY, IGNITION SWITCH	1	
34	518351570	WIRE HARNESS ASSY.	1	
35	518466070	BRACKET, KEY SWITCH	1	
36	091005012	SCREW 5X12	4	
39	516217920	SEESAW SWITCH/MAG, CLUTCH.....	1	INCLUDES ITEMS W/ %
39-1%	516010140	SWITCH COVER	1	
40	516458960	SWITCH PLATE	1	

ELECTRIC DEVICE ASSY. (CONT'D.)

NOTES:

1 ITEM 29 IS USED FOR EQUIPMENT WITH S/N K10020 AND BELOW.

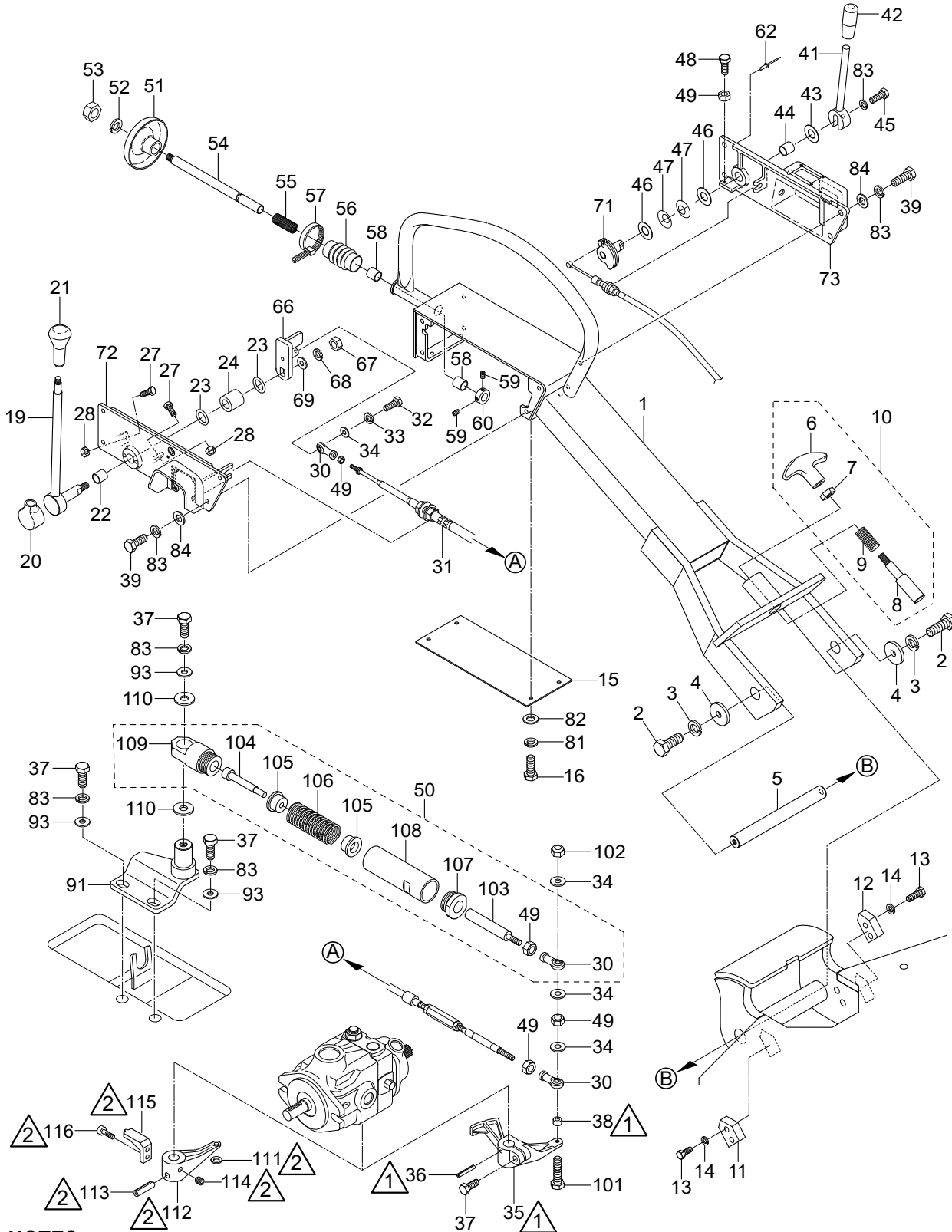
2 ITEM 29 IS USED FOR EQUIPMENT WITH S/N L10001 AND ABOVE.



ELECTRIC DEVICE ASSY. (CONT'D.)

<u>NO.</u>	<u>PART NO.</u>	<u>PART NAME</u>	<u>QTY.</u>	<u>REMARKS</u>
41	091505015	SCREW 5X15 SW	4	
42	020305040	NUT M5	1	
45	955010312	HOUR METER/SENDEC	1	
46	518466490	LEAD CORD, H-METER (+) SW	1	
47	518466500	LEAD CORD, H-METER (-) GROUND	1	
48	515450380	WIRE HARNESS	1	
49	091003015	SCREW 3X15	2	
50	020303020	NUT M3	2	
51	031103050	WASHER, FLAT M3	2	
54	955408260	GLOW LAMP	1	
55	1569465990	LAMP TIMER	1	
56	516349450	WIRE HARNESS	1	
57	0105050616	BOLT 6X15	1	REPLACES P/N 001220615
58	952404470	WASHER, FLAT M6.....	1	REPLACES P/N 031106100
61	955300420	HORN ASSY., DC12V	1	
62	011006010	BOLT 6X10	1	REPLACES P/N 001220610
62-1	030206150	WASHER, LOCK M6	1	
62-2	952404470	WASHER, FLAT M6.....	1	REPLACES P/N 031106100
63	955400800	HORN BUTTON ASSY.	1	
64	955405980	COVER, HORN BUTTON	1	
67	955300400	BUZZER	1	
70	518351580	WIRE HARNESS ASSY (L-H-C)	1	
71	959021826	SPIRAL TUBE	2	
72	507010110	CLAMP	12	
73	511010040	CLAMP	1	
75	959021911	TUBE	1	
76	507010110	CLAMP	7	
81	515448530	BATTERY CORD (+)	1	
82	955300480	BATTERY TERMINAL (+)	1	
83	955300460	TERMINAL COVER (+).....	1	REPLACES P/N 955300500
84	515447360	BATTERY CORD (-)	1	
85	955300490	BATTERY TERMINAL (-)	1	
86	955300470	TERMINAL COVER (-).....	1	REPLACES P/N 955300510
87	506010070	CLAMP	2	
101	518351510	MAGNETIC CLUTCH	1	
102	518466170	WASHER, STEPPED	1	
103	009110080	SOCKET HEAD BOLT 6X30 ZN	1	
104	011206020	BOLT 6X20	1	REPLACES P/N 001220620
105	011006010	BOLT 6X10	1	REPLACES P/N 001220610
105-1	030206150	WASHER, LOCK M6	1	
105-2	952404470	WASHER, FLAT M6.....	1	REPLACES P/N 031106100
122	515472950	HEAD LAMP BRACKET	1	
123	009110023	SOCKET HEAD BOLT 8X70 T	1	
124	020308060	NUT M8	2	
125	031108160	WASHER, FLAT M8	1	

DEADMAN SYSTEM CONTROL ASSY.



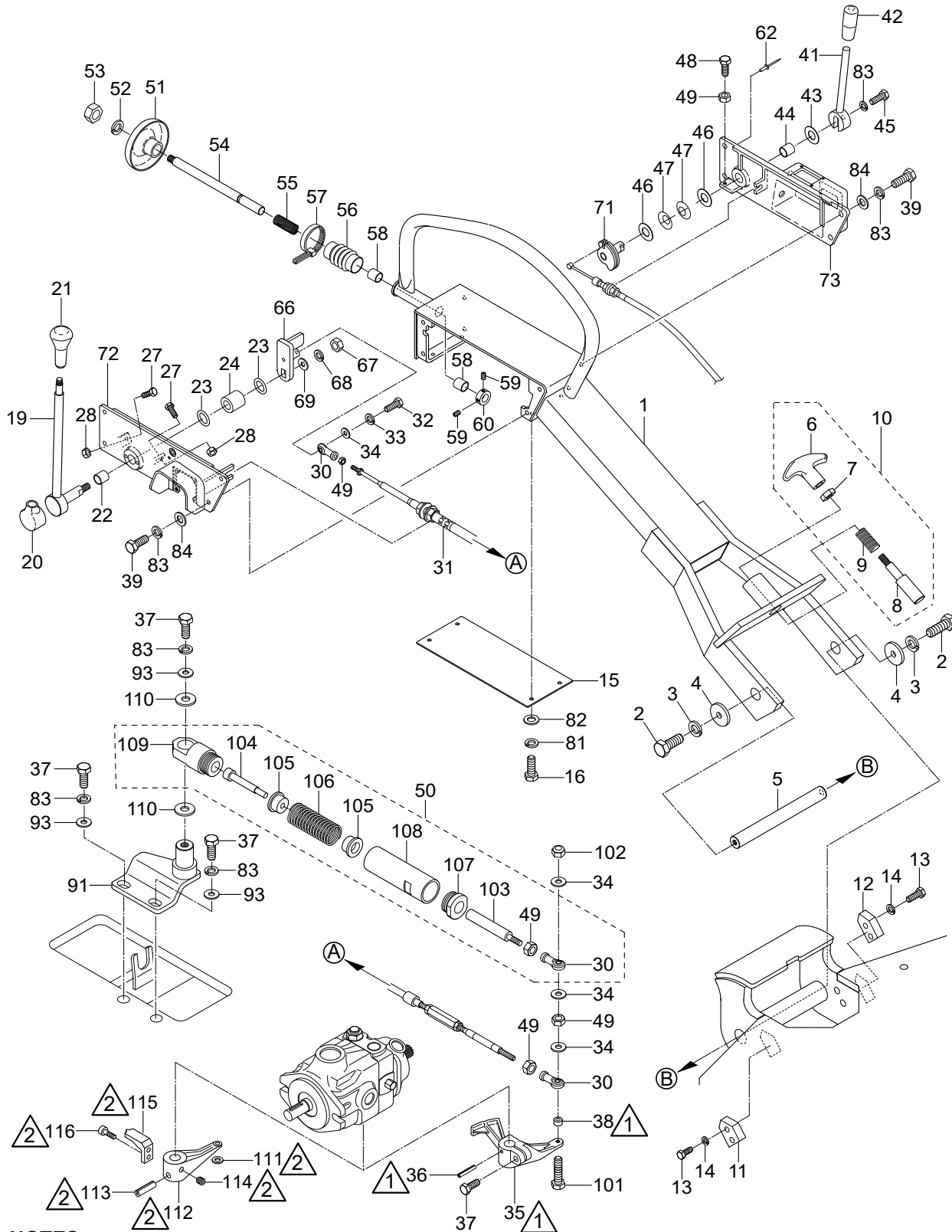
NOTES:

- ① EQUIPMENT WITH S/N K10020 AND BELOW USES ITEMS 35, 36, AND 38.
- ② EQUIPMENT WITH S/N L10001 AND ABOVE USES ITEMS 111-116.

DEADMAN SYSTEM CONTROL ASSY.

<u>NO.</u>	<u>PART NO.</u>	<u>PART NAME</u>	<u>QTY.</u>	<u>REMARKS</u>
1	518120800	HANDLE	1	
2	012210035	BOLT 10X35	2	REPLACES P/N 001221035
3	030210250	WASHER, LOCK M10	2	
4	952408680	WASHER	2	
5	518466130	SHAFT, HANDLE	1	
6#	959007140	T-KNOB, M12	1	
7#	0039312000	NUT M12.....	1	REPLACES P/N 020312100
8#	517459710	STOPPER, HANDLE	1	
9#	517459700	SPRING, HANDLE	1	
10	515910090	HANDLE/STOPPER ASSY.....	1	INCLUDES ITEMS W/ #
11	518466090	STOPPER, HANDLE/IN-OP	1	
12	518466100	STOPPER, HANDLE/IN-HO	1	
13	012210035	BOLT 10X35	4	REPLACES P/N 001221035
14	030210250	WASHER, LOCK M10	4	
15	518351400	HANDLE COVER	1	
16	011206020	BOLT 6X20	4	REPLACES P/N 001220620
19	518352810	TRAVELLING, LEVER	1	
20	518467530	LEVER COVER	1	
21	959300870	KNOB	1	
22	464010010	DRY BUSHING	1	
23	458450660	WASHER	2	
24	952408970	COLLAR	1	
27	011208025	BOLT 8X25	2	REPLACES P/N 001220825
28	020108060	NUT M8.....	2	REPLACES P/N 020308060
30%	501011162	ROD END	3	
31	517342410	PUSH-PULL CABLE	1	
32	011606025	BOLT 6X25	1	REPLACES P/N 001220625
33	030206150	WASHER, LOCK M6	1	
34	952404470	WASHER	4	
35	518351470	PV LEVER	1	S/N K10020 AND BELOW
36	025405032	SPRING PIN 5X32.....	1	S/N K10020 AND BELOW
37	014208020	BOLT 8X20	4	REPLACES P/N 001220820
37	014208020	BOLT 8X20	3	S/N K10020 AND BELOW REPLACES P/N 001220820 S/N L10001 AND ABOVE
38	952408770	COLLAR.....	1	S/N K10020 AND BELOW
39	014208020	BOLT 8X20	8	REPLACES P/N 001220820
41	518466140	THROTTLE LEVER	1	
42	959403840	BAR GRIP	1	
43	952408560	WASHER, BRASS	1	
44	464010010	DRY BUSHING	1	
45	011208025	BOLT 8X25	1	REPLACES P/N 001220825
46	458450660	WASHER	2	
47	033910080	CONICAL WASHER, LOCK	2	
48	0105050616	BOLT 6X15	1	REPLACES P/N 001220615
49%	020106050	NUT M6.....	5	REPLACES P/N 020306050
50	518910120	CYLINDER ASSY.....	1	INCLUDES ITEMS W/ %

DEADMAN SYSTEM CONTROL ASSY. (CONT'D.)



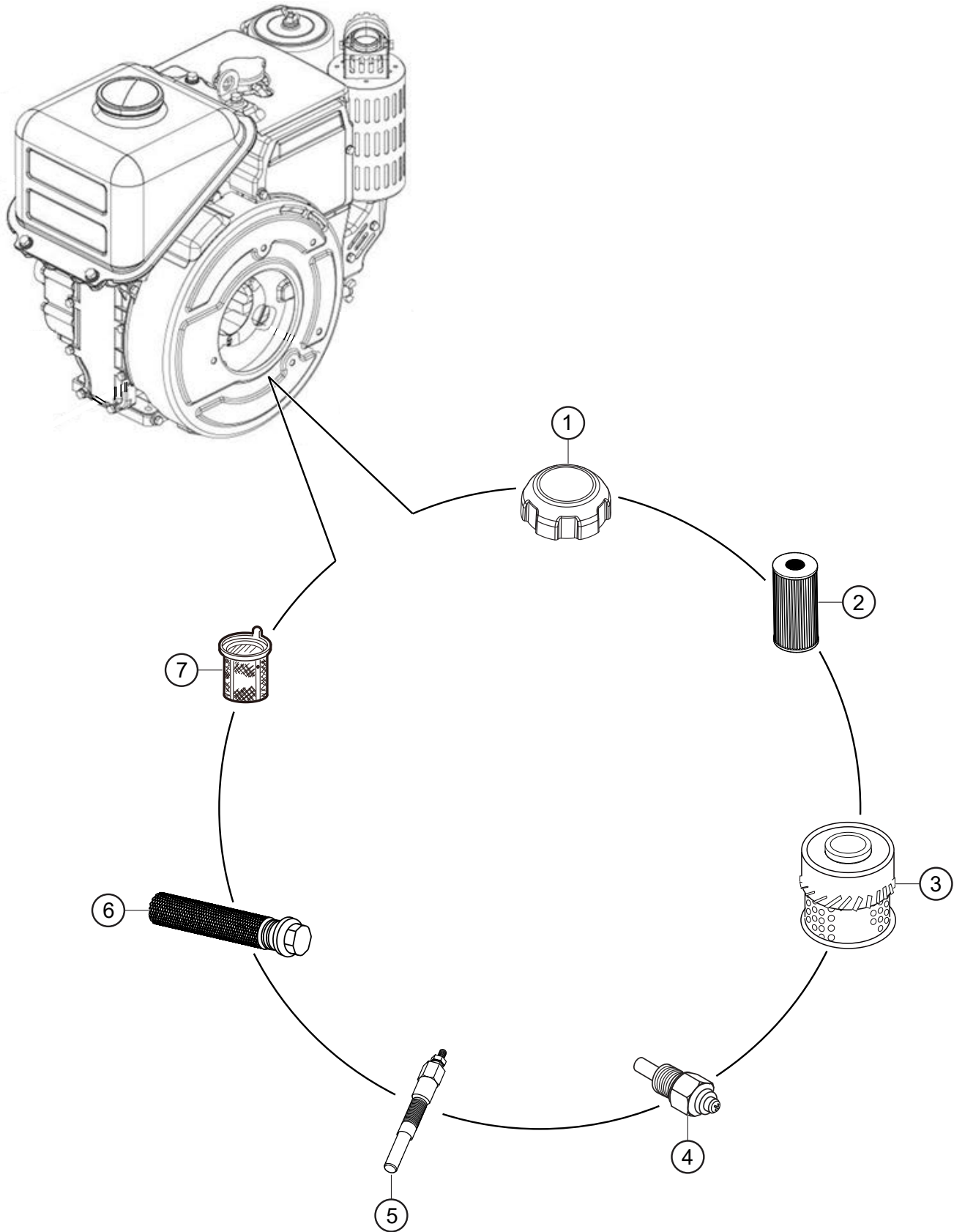
NOTES:

- ① EQUIPMENT WITH S/N K10020 AND BELOW USES ITEMS 35, 36, AND 38.
- ② EQUIPMENT WITH S/N L10001 AND ABOVE USES ITEMS 111-116.

DEADMAN SYSTEM CONTROL ASSY. (CONT'D.)

<u>NO.</u>	<u>PART NO.</u>	<u>PART NAME</u>	<u>QTY.</u>	<u>REMARKS</u>
51	515447720	DISC PLATE, DEADMAN	1	
52	030212300	WASHER, LOCK M12	1	
53	0039312000	NUT M12.....	1	REPLACES P/N 020312100
54	518351460	ROD, DEADMAN	1	
55	509436980	SPRING, DEADMAN	1	
56	509436990	PROTECTOR, DEADMAN	1	
57	507010110	CLAMP	1	
58	464010010	DRY BUSHING	2	
59	01420601	SOCKET HEAD SCREW 6X6	2	REPLACES P/N 099206006
60	509436960	ROD STOPPER, DEADMAN	1	
62	515010080	DECAL, WINDOW SHADE RIVET	2	
66	518352800	LEVER, JOINT, TRAVELLING	1	
67	020310080	NUT M10	1	
68	030210250	WASHER, LOCK M10	1	
69	031110160	WASHER, FLAT M10	1	
71	518351450	SHAFT, THROTTLE	1	
72	518120680	TRAVELLING LEVER BRACKET	1	
73	518120690	THROTTLE LEVER BRACKET	1	
81	030206150	WASHER, LOCK M6	4	
82	952404470	WASHER, FLAT M6.....	4	REPLACES P/N 031106100
83	030208200	WASHER, LOCK M8	12	
84	0401450080	WASHER, FLAT M8.....	8	REPLACES P/N 031108160
91	518352580	CYLINDER, STAY	1	
93	952401560	WASHER	3	
101	001820650	BOLT 6X50	1	
102	022710607	NYLON NUT M6	1	
103%	515461610	OUTER SHAFT	1	
104%	515461600	INNER SHAFT	1	
105%	518467400	CYLINDER, PISTON	2	
106%	518467390	SPRING, CYLINDER	1	
107%	506442930	CAP	1	
108%	515461590	CYLINDER	1	
109%	515461580	LINK CAP	1	
110	506442940	COLLAR	2	
111	031106100	WASHER, FLAT M6.....	1	S/N L10001 AND ABOVE
112	518359450	PV LEVER	1	S/N L10001 AND ABOVE
113	025406035	SPRING PIN 6X35.....	1	S/N L10001 AND ABOVE
114	098208008	SOCKET HEAD BOLT8X8T.....	1	S/N L10001 AND ABOVE
115	518476260	ARM, LIMIT SWITCH.....	1	S/N L10001 AND ABOVE
116	001520615	SOCKET HEAD BOLT 6X15 T.....	2	S/N L10001 AND ABOVE

ENGINE SERVICE PARTS



ENGINE SERVICE PARTS

<u>NO.</u>	<u>PART NO.</u>	<u>PART NAME</u>	<u>QTY.</u>	<u>REMARKS</u>
1	1252141030	CAP, FUEL TANK	1	
2	1T02143560	ELEMENT, FUEL FILTER	1	
3	1497111180	ELEMENT, AIR CLEANER	1	
4	1152139013	SWITCH, OIL	1	
5	1685165512	GLOW PLUG	1	
6	1491132110	FILTER, OIL	1	
7	1254541350	FITLER, FUEL TANK	1	

PARTS MANUAL

HERE'S HOW TO GET HELP

PLEASE HAVE THE MODEL AND SERIAL
NUMBER ON-HAND WHEN CALLING

UNITED STATES

Multiquip Inc.

(310) 537- 3700
6141 Katella Avenue Suite 200
Cypress, CA 90630
E-MAIL: mq@multiquip.com
WEBSITE: www.multiquip.com

CANADA

Multiquip

(450) 625-2244
4110 Industriel Boul.
Laval, Quebec, Canada H7L 6V3
E-MAIL: infocanada@multiquip.com

UNITED KINGDOM

Multiquip (UK) Limited Head Office

0161 339 2223
Unit 2, Northpoint Industrial Estate,
Globe Lane,
Dukinfield, Cheshire SK16 4UJ
E-MAIL: sales@multiquip.co.uk

© COPYRIGHT 2026, MULTIQUIP INC.

Multiquip Inc. and the MQ logo are registered trademarks of Multiquip Inc. and may not be used, reproduced, or altered without written permission. All other trademarks are the property of their respective owners and used with permission.

This manual MUST accompany the equipment at all times. This manual is considered a permanent part of the equipment and should remain with the unit if resold.

DISCLAIMER: Product features, descriptions, and specifications are based on published information at the time of publication and are subject to change at any time without notice. Multiquip Inc. and its affiliates reserve the right to change specifications, features, design, and descriptions of products at any time without notice.

