

PARTS MANUAL



Mikasa SERIES
MODEL MVC88VTH
MODEL MVC88VTHW
ONE-WAY PLATE COMPACTOR
**(HONDA GX160UT2QMX2/GX160UT2QMXC/
GX160UT2QCM GASOLINE ENGINES)**

Revision #11 (08/10/23)

To find the latest revision of this publication or associated operation manual, visit our website at: www.multiquip.com



THIS MANUAL MUST ACCOMPANY THE EQUIPMENT AT ALL TIMES.

**MVC88VTH/MVC88VTHW
Plate Compactor**

Explanation Of Code In Remarks Column..... 4
Suggested Spare Parts 5

Component Drawings

Body Assembly6-11
Vibrator Plate/Case Assembly 12-13
Transport Wheel Assembly (Option)..... 14-15
Sprinkler Assembly 16-17
Urethane Plate Assembly (Option) 18-19
Nameplate And Decals Assembly..... 20-21
Engine Service Parts 22-23

NOTICE
Specifications and part numbers are subject to change without notice.

EXPLANATION OF CODE IN REMARKS COLUMN

The following section explains the different symbols and remarks used in the Parts section of this manual. Use the help numbers found on the back page of the manual if there are any questions.

NOTICE

The contents and part numbers listed in the parts section are subject to change without notice. Multiquip does not guarantee the availability of the parts listed.

SAMPLE PARTS LIST

NO.	PART NO.	PART NAME
QTY.		REMARKS
1	12345	BOLT1INCLUDES ITEMS W/%
2%		WASHER, 1/4 IN.NOT SOLD SEPARATELY
2%	12347	WASHER, 3/8 IN. ...1MQ-45T ONLY
3	12348	HOSEA/R ...MAKE LOCALLY
4	12349	BEARING1S/N 2345B AND ABOVE

NO. Column

Unique Symbols — All items with same unique symbol (@, #, +, %, or >) in the number column belong to the same assembly or kit, which is indicated by a note in the “Remarks” column.

Duplicate Item Numbers — Duplicate numbers indicate multiple part numbers, which are in effect for the same general item, such as different size saw blade guards in use or a part that has been updated on newer versions of the same machine.

NOTICE

When ordering a part that has more than one item number listed, check the remarks column for help in determining the proper part to order.

PART NO. Column

Numbers Used — Part numbers can be indicated by a number, a blank entry, or TBD.

TBD (To Be Determined) is generally used to show a part that has not been assigned a formal part number at the time of publication.

A blank entry generally indicates that the item is not sold separately or is not sold by Multiquip. Other entries will be clarified in the “Remarks” Column.

QTY. Column

Numbers Used — Item quantity can be indicated by a number, a blank entry, or A/R.

A/R (As Required) is generally used for hoses or other parts that are sold in bulk and cut to length.

A blank entry generally indicates that the item is not sold separately. Other entries will be clarified in the “Remarks” Column.

REMARKS Column

Some of the most common notes found in the “Remarks” Column are listed below. Other additional notes needed to describe the item can also be shown.

Assembly/Kit — All items on the parts list with the same unique symbol will be included when this item is purchased.

Indicated by:

“INCLUDES ITEMS W/(unique symbol)”

Serial Number Break — Used to list an effective serial number range where a particular part is used.

Indicated by:

“S/N XXXXX AND BELOW”

“S/N XXXX AND ABOVE”

“S/N XXXX TO S/N XXX”

Specific Model Number Use — Indicates that the part is used only with the specific model number or model number variant listed. It can also be used to show a part is NOT used on a specific model or model number variant.

Indicated by:

“XXXXX ONLY”

“NOT USED ON XXXX”

“Make/Obtain Locally” — Indicates that the part can be purchased at any hardware shop or made out of available items. Examples include battery cables, shims, and certain washers and nuts.

“Not Sold Separately” — Indicates that an item cannot be purchased as a separate item and is either part of an assembly/kit that can be purchased, or is not available for sale through Multiquip.

SUGGESTED SPARE PARTS

MVC88VTH/MVC88VTWH PLATE COMPACTOR WITH HONDA GX160UT2QMX2/GX160UT2QMXC/GX160UT2QCM GASOLINE ENGINES

1 to 5 units

Qty.	P/N	Description
3070100332.....	V-BELT, RPF3330
5	◆◆.....0650140480.....	SPARK PLUG, EY45V
5	♣.....9807956846.....	SPARK PLUG, BPR6ES
128462ZH8003.....	ROPE, RECOIL STARTER
5	◆◆.....17210ZE1517.....	ELEMENT, AIR CLEANER
5	♣.....17210Z0V781.....	ELEMENT, AIR CLEANER
1	◆.....17620Z4H030.....	CAP COMPLETE, FUEL TANK
1	◇♣.....17620Z4H900.....	CAP COMPLETE, FUEL TANK
117672Z4H000.....	FUEL FILTER, FUEL TANK
4939010230.....	SHOCK ABSORBER

NOTICE

- ◆ GX160UT2QMX2
- ◇ GX160UT2QMXC
- ♣ GX160UT2QCM

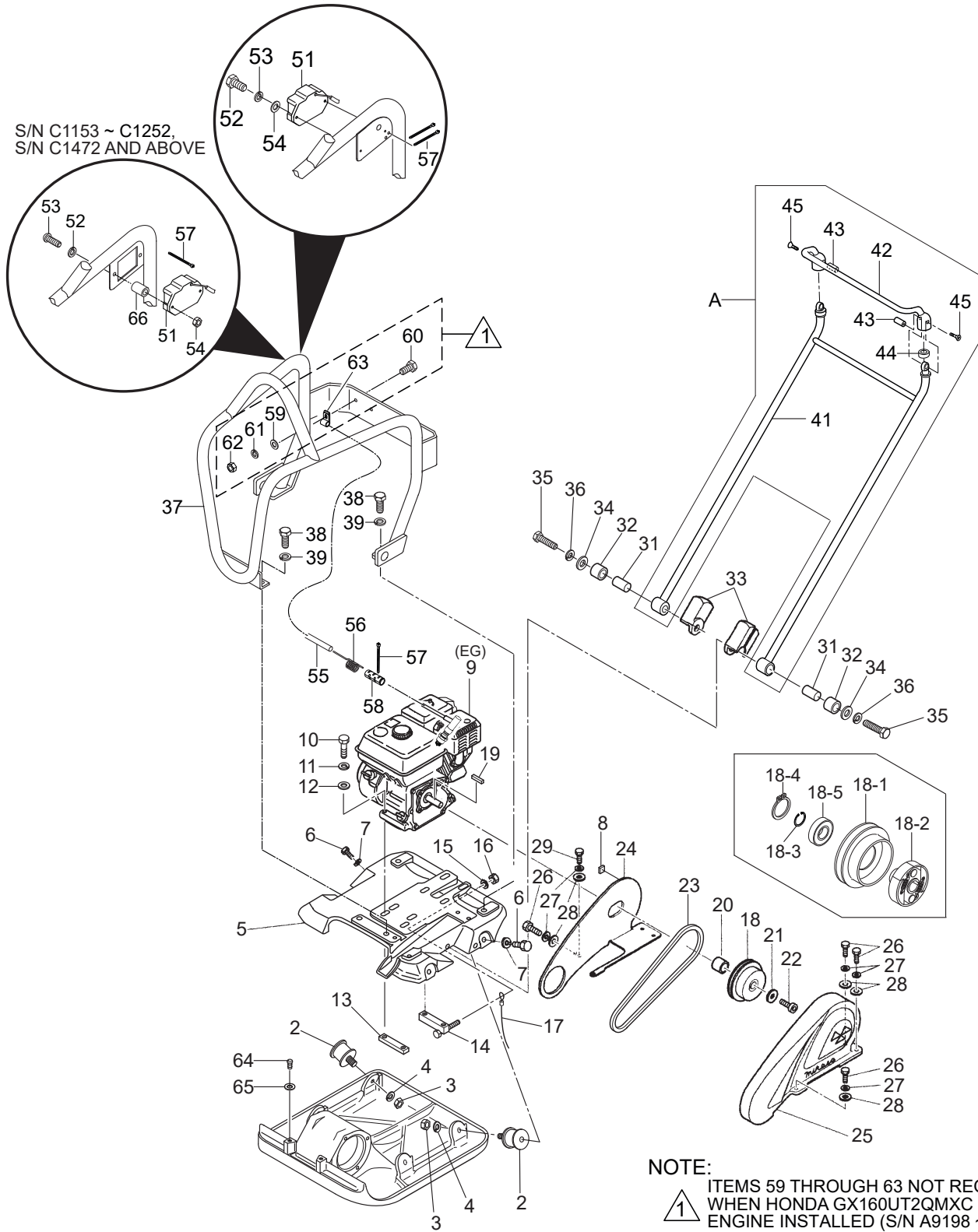
NOTICE

Part numbers on this Suggested Spare Parts list may supersede/replace the part numbers shown in the following parts lists.

BODY ASSY.

S/N B1001 ~ B6084, S/N C6085 ~ C9999,
S/N C1001 ~ C1152, S/N C1253 ~ C1471

S/N C1153 ~ C1252,
S/N C1472 AND ABOVE



NOTE:



ITEMS 59 THROUGH 63 NOT REQUIRED
WHEN HONDA GX160UT2QMXC
ENGINE INSTALLED (S/N A9198 ~ A9999,
S/N A1001 ~ A3342, S/N B1001 ~ B6084,
S/N C6085 ~ C9999, S/N C1001 ~ C1152,
S/N C1253 ~ C1471).

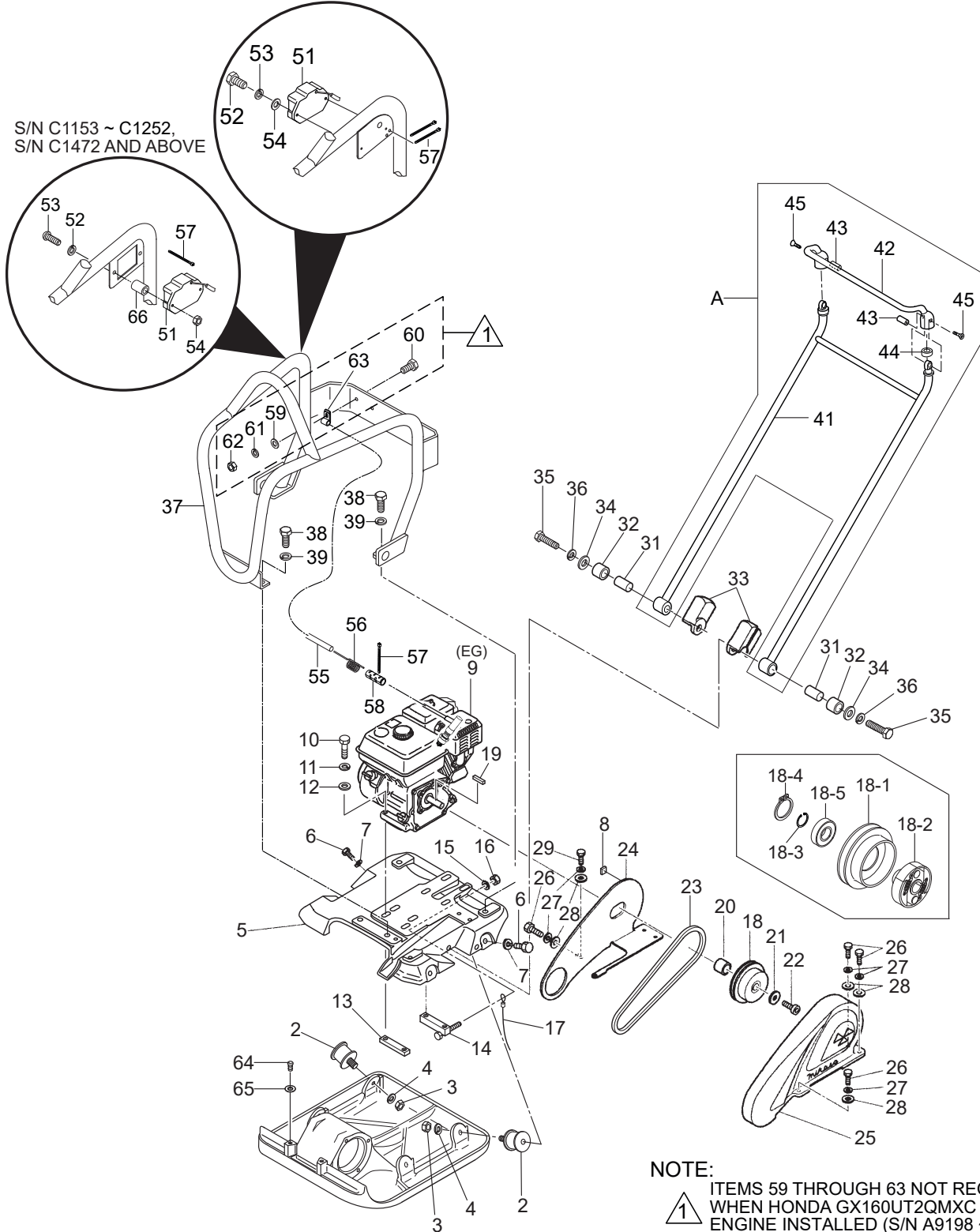
BODY ASSY.

<u>NO.</u>	<u>PART NO.</u>	<u>PART NAME</u>	<u>QTY.</u>	<u>REMARKS</u>
A	416910120	HANDLE ASSY.	1.....	INCLUDES ITEMS W/%
2	939010230	SHOCK ABSORBER	4	
3	020310080	NUT M10	4	
4	030210250	WASHER, LOCK M10	4	
5	416120390	BASE	1	
6	001221025	BOLT 10X25	4	
7	030210250	WASHER, LOCK M10	4	
8	416454360	RUBBER PLATE 25X25X8	1	
9	912216015	ENGINE ASSY.,GX160UT2QMX2.....	1.....	S/N A9197 AND BELOW
9	912216021	ENGINE ASSY.,GX160UT2QMXC	1.....	S/N A9198 ~ A9999 S/N A1001 ~ A3342 S/N B1001 ~ B6084 S/N C6085 ~ C9999 S/N C1001 ~ C1152 S/N C1253 ~ C1471
9	912216025	ENGINE ASSY.,GX160UT2QCM.....		S/N C1153 ~ C1252 S/N C1472 AND ABOVE
10	001220850	BOLT 8X50	4	
11	030208200	WASHER, LOCK M8	4	
12	031108160	WASHER, FLAT M8	4	
13	416466520	ENGINE NUT	1	
14	416466540	ENGINE NUT	1	
15	031108160	WASHER, FLAT M8	1	
16	022710809	NYLON NUT M8	1	
17	959404350	EARTH WIRE, 1"	1	
18	416910100	CLUTCH ASSY	1	
18-1	416464490	CLUTCH DRUM, 1"	1	
18-2	416351320	CLUTCH SHOE AND BOSS ASSY.	1	
18-3	080200300	STOP RING, S30	1	
18-4	080600550	STOP RING, AR55	1	
18-5	042006006	BEARING 6006	1	
19	90745ZE1600	KEY 4.78X4.78X38	1	
20	416452809	COLLAR	1	
21	952400130	WASHER	1	
22	009110004	SOCKET HEAD BOLT 5/16"	1	
23	070100332	V-BELT RPF3330	1	
24	416120950	BELT COVER, INNER	1	
25	416010040	BELT COVER, OUTER	1	
26	001220825	BOLT 8X25	4	
27	030208200	WASHER, LOCK M8	5	
28	031108160	WASHER, FLAT M8	5	
29	001220820	BOLT 8X20	1	
31	952408710	COLLAR 13X20X44	2	
32	404433430	RUBBER 20X32X28	2	
33	416452360	HANDLE STOPPER	2	
34	952405600	WASHER 12.5X35X4.5	2	

BODY ASSY. (CONTINUED)

S/N B1001 ~ B6084, S/N C6085 ~ C9999,
S/N C1001 ~ C1152, S/N C1253 ~ C1471

S/N C1153 ~ C1252,
S/N C1472 AND ABOVE



NOTE:



ITEMS 59 THROUGH 63 NOT REQUIRED
WHEN HONDA GX160UT2QMXC
ENGINE INSTALLED (S/N A9198 ~ A9999,
S/N A1001 ~ A3342, S/N B1001 ~ B6084,
S/N C6085 ~ C9999, S/N C1001 ~ C1152,
S/N C1253 ~ C1471).

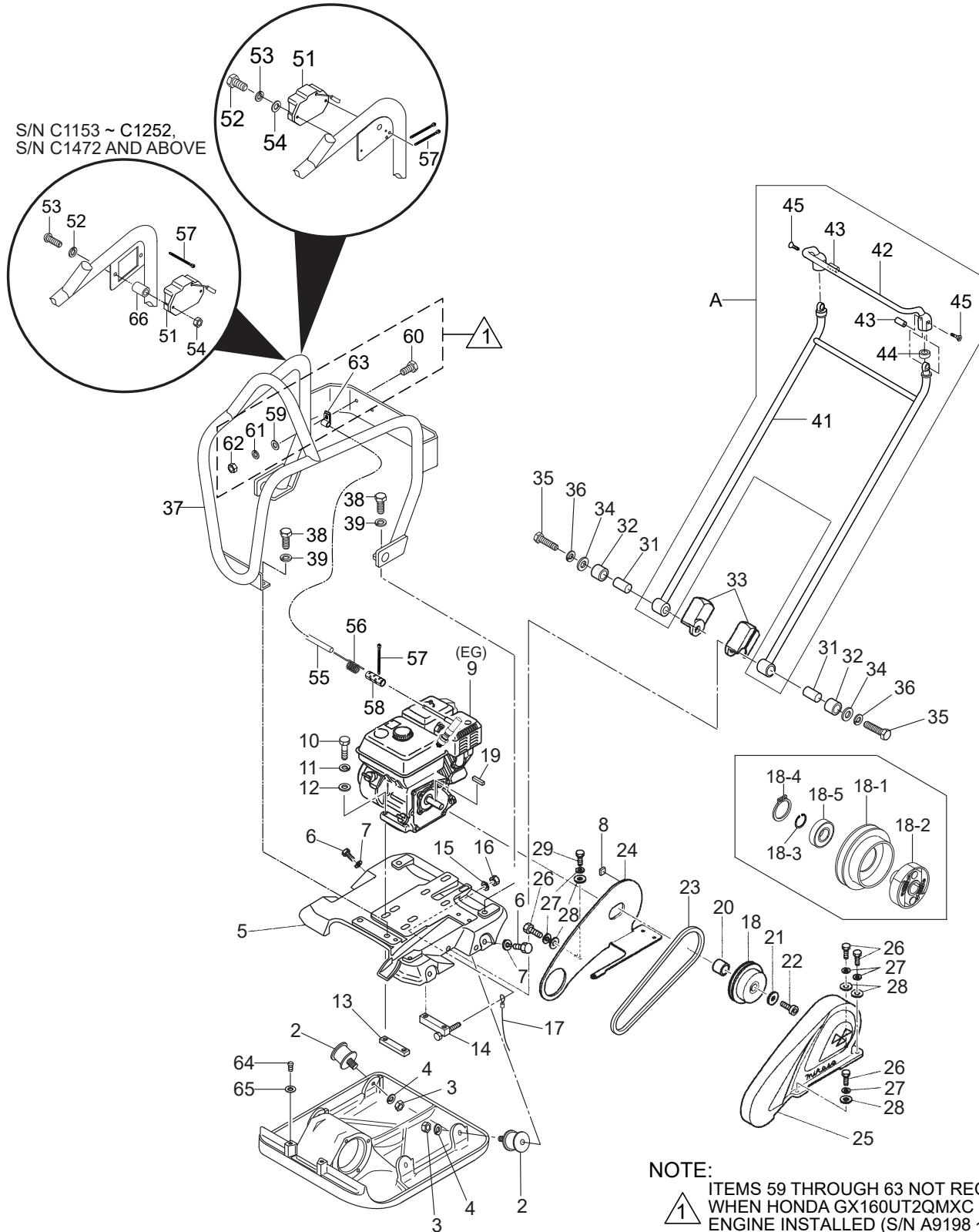
BODY ASSY. (CONTINUED)

<u>NO.</u>	<u>PART NO.</u>	<u>PART NAME</u>	<u>QTY.</u>	<u>REMARKS</u>
35	001221253	BOLT 12X65	2	
36	030212300	WASHER, LOCK M12	2	
37	416121050	GUARD HOOK	1	S/N A9197 AND BELOW
37	416121740	GUARD HOOK	1	S/N A9198 ~ A9999 S/N A1001 ~ A3342 S/N B1001 ~ B6084 S/N C6085 ~ C9999 S/N C1001 ~ C1152 S/N C1253 ~ C1471
37	416121051	GUARD HOOK	1	S/N C1153 ~ C1252 S/N C1472 AND ABOVE
38	0105091025	BOLT 10X25	4	
39	030210250	WASHER, LOCK M10	4	
41%	416121010	VAS HANDLE BODY	1	
42%	416218770	GRIP, VAS HANDLE	1	
43%	416459320	HANDLE NUT, VAS HANDLE	2	
44%	416459340	RUBBER, VAS HANDLE	2	
45%	009120407	SUNK HEAD BOLT 10X20	2	
51	955010311	TACH/HOUR METER	1	
52	001220510	BOLT 5X10	2	S/N B1001 ~ B6084 S/N C6085 ~ C9999 S/N C1001 ~ C1152 S/N C1253 ~ C1471
52	009110101	PAN HEAD SCREW 5X25	2	S/N C1153 ~ C1252 S/N C1472 AND ABOVE
53	030205130	WASHER, LOCK M5	2	
54	58151	WASHER, FLAT M5	2	S/N B1001 ~ B6084 S/N C6085 ~ C9999 S/N C1001 ~ C1152 S/N C1253 ~ C1471
54	020305040	NUT, M5	2	S/N C1153 ~ C1252 S/N C1472 AND ABOVE
55	959026822	RUBBER TUBE	1	
56	955010310	CURL CORD	1	
57	507010110	CLAMP	3	S/N B1001 ~ B6084 S/N C6085 ~ C9999 S/N C1001 ~ C1152 S/N C1253 ~ C1471
57	507010110	CLAMP	2	S/N C1153 ~ C1252 S/N C1472 AND ABOVE
58	955010307	CLIP BELT	1	

BODY ASSY. (CONTINUED)

S/N B1001 ~ B6084, S/N C6085 ~ C9999,
S/N C1001 ~ C1152, S/N C1253 ~ C1471

S/N C1153 ~ C1252,
S/N C1472 AND ABOVE

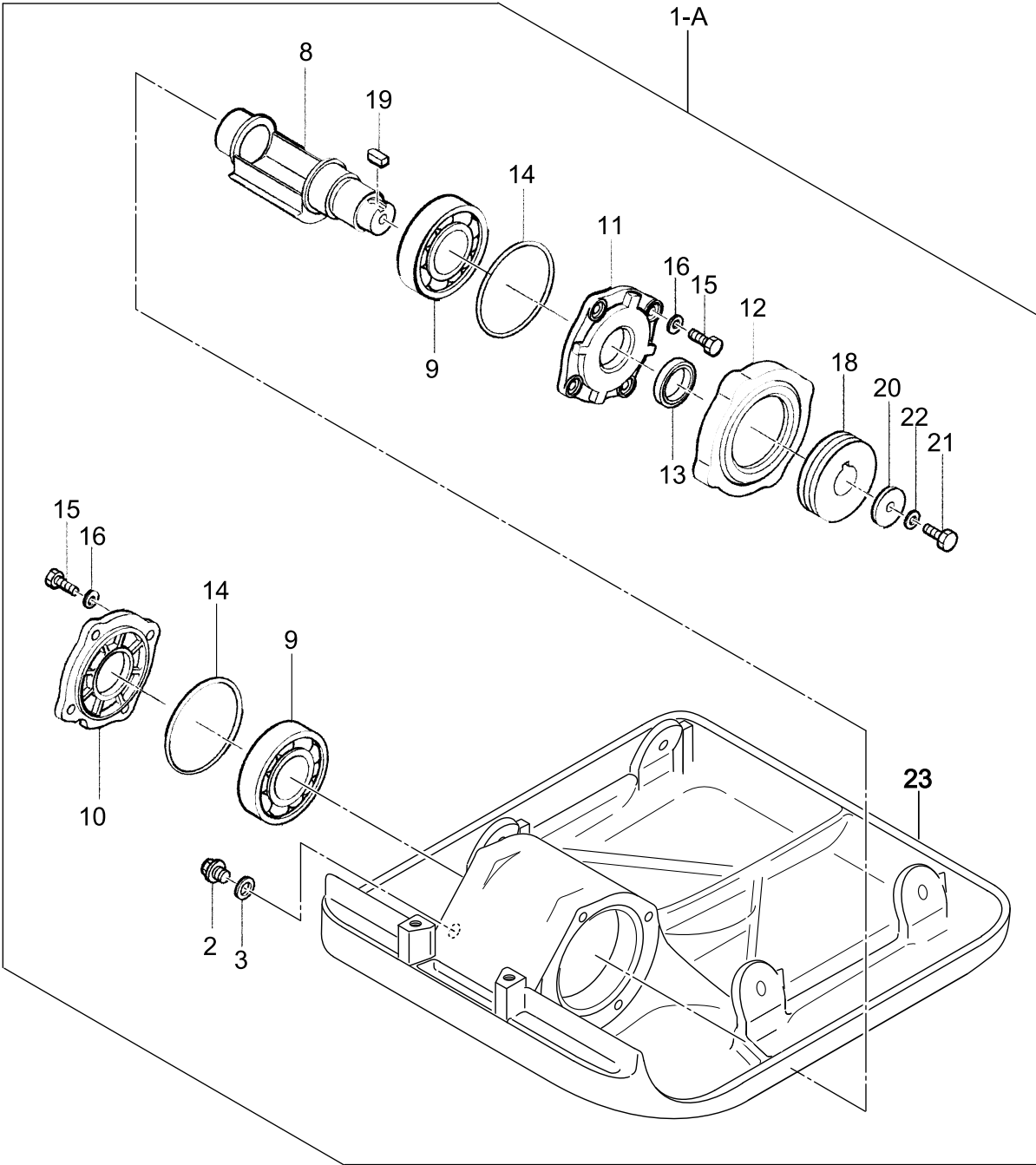


NOTE:
 1 ITEMS 59 THROUGH 63 NOT REQUIRED
 WHEN HONDA GX160UT2QMXC
 ENGINE INSTALLED (S/N A9198 ~ A9999,
 S/N A1001 ~ A3342, S/N B1001 ~ B6084,
 S/N C6085 ~ C9999, S/N C1001 ~ C1152,
 S/N C1253 ~ C1471).

BODY ASSY. (CONTINUED)

<u>NO.</u>	<u>PART NO.</u>	<u>PART NAME</u>	<u>QTY.</u>	<u>REMARKS</u>
59	952404470	WASHER, FLAT M6.....	1.....	S/N A9197 AND BELOW
60	0105050616	BOLT 6X15	1.....	S/N A9197 AND BELOW
61	030206150	WASHER, LOCK M6.....	1.....	S/N A9197 AND BELOW
62	020106050	NUT M6.....	1.....	S/N A9197 AND BELOW
63	2067550101	CLAMP COMPLETE.....	1.....	S/N A9197 AND BELOW
64	001221215	BOLT 12X15	2	
65	031112230	WASHER, FLAT M12	2	
66	952409910	COLLAR 6.5X10.5X12.7	2.....	S/N C1153 ~ C1252 S/N C1472 AND ABOVE

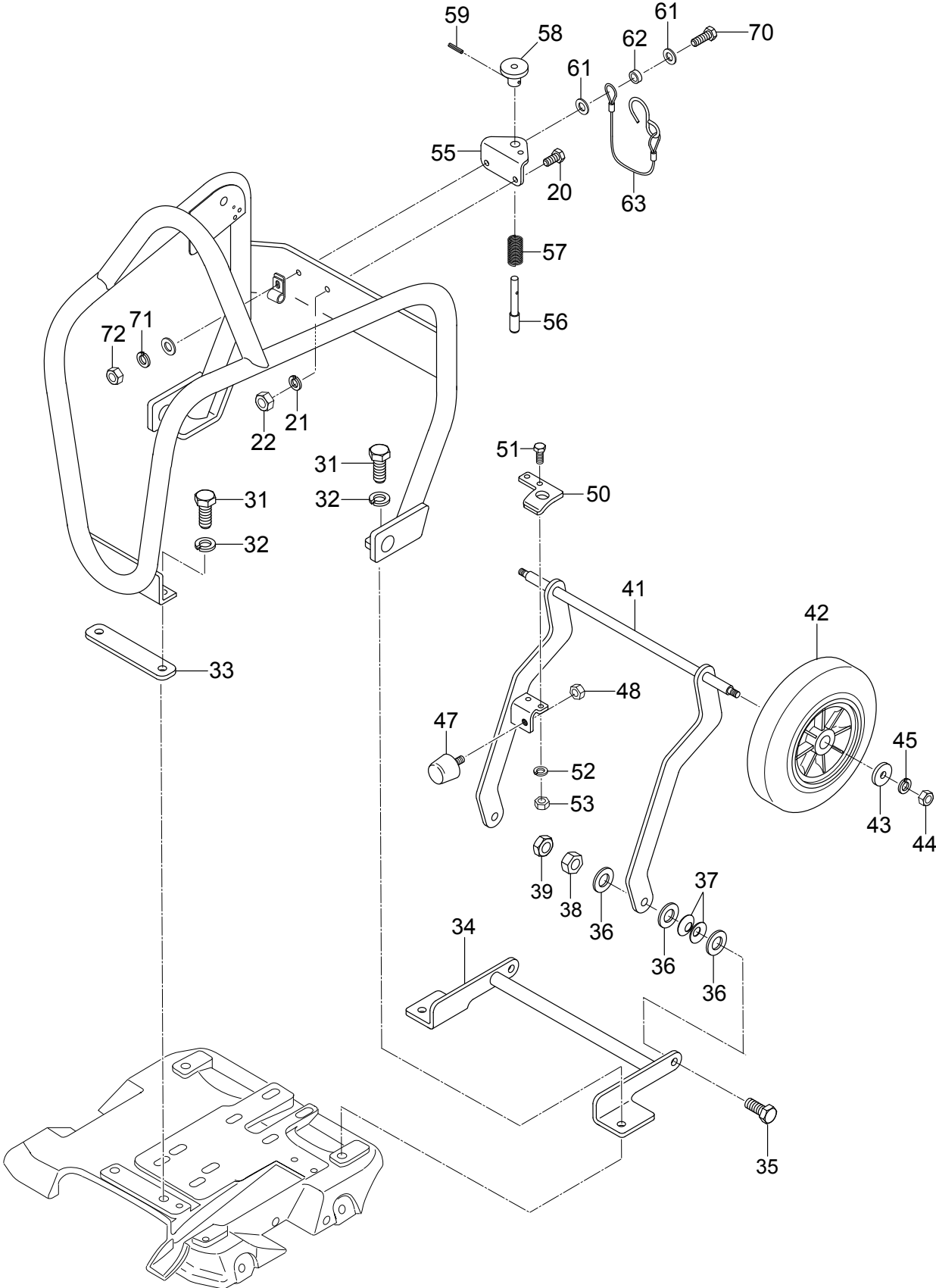
VIBRATOR PLATE/CASE ASSY.



VIBRATOR PLATE/CASE ASSY.

<u>NO.</u>	<u>PART NO.</u>	<u>PART NAME</u>	<u>QTY.</u>	<u>REMARKS</u>
1-A	416910150	VIBRATING PLATE/CASE ASSY.....	1.....	INCLUDES ITEMS W/#
2#	953405270	PLUG 1/4X14 X13L	1	
3#	953405260	PACKING 1/4"	1	
8#	416218390	ECCENTRIC ROTATOR	1	
9#	040406211	BEARING 6211C4	2	
10#	416338909	CASE COVER (R)	1	
11#	416338919	CASE COVER (L)	1	
12#	416349930	BELT COVER GUARD	1	
13#	060403060	OIL SEAL, TC35488	1	
14#	050101000	O-RING	2	
15#	014208020	BOLT 8X20	8	
16#	030208200	WASHER, LOCK M8	8	
18#	416464470	PULLEY, VIBRATOR ASSY.	1	
19#	951405240	KEY 7X7X19	1	
20#	952404250	WASHER 11X40X4	1	
21#	0105091025	BOLT 10X25	1	
22#	030210250	WASHER, LOCK M10	1	
23#	416120141	VIBRATING PLATE	1	

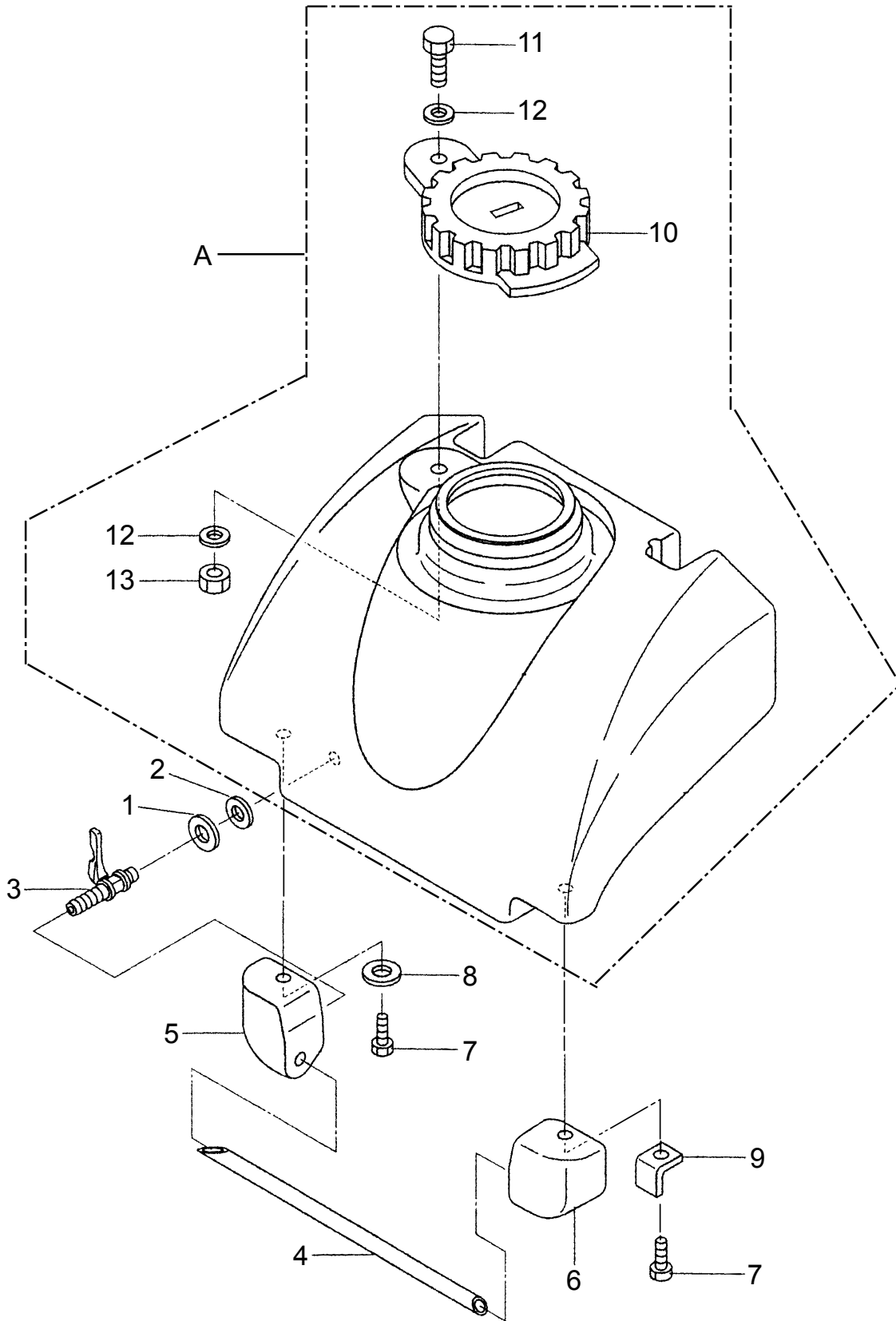
TRANSPORT WHEEL ASSY. (OPTION)



TRANSPORT WHEEL ASSY. (OPTION)

<u>NO.</u>	<u>PART NO.</u>	<u>PART NAME</u>	<u>QTY.</u>	<u>REMARKS</u>
20	0105050616	BOLT 6X15	1	
21	030206150	WASHER, LOCK M6	1	
22	020106050	NUT M6	1	
31	012010030	BOLT 10X30	4	
32	030210250	WASHER, LOCK M10	4	
33	416466680	SPACER, WHEEL	1	
34	416352490	BRACKET, WHEEL	1	
35	012210035	BOLT 10X35	2	
36	031110160	WASHER, FLAT M10	6	
37	032110180	CONICAL LOCK WASHER	4	
38	020310080	NUT M10	2	
39	020310080	NUT M10	2	
41	416218830	AXLE, TRANSPORT WHEEL, WHL88T	1	S/N A9197 ~ BELOW
41	416219520	AXLE, TRANSPORT WHEEL, WHL88TC	1	S/N AND A9198 ~ C1471
41	416218830	AXLE, TRANSPORT WHEEL, WHL88T	1	S/N C1472 AND ABOVE
42	959301000	WHEEL	2	
43	952400130	SPACER	2	
44	020108060	NUT M8	2	
45	030208200	WASHER, LOCK M8	2	
47	939010270	STOPPER RUBBER	1	
48	020108060	NUT M8	1	
50	416467230	STOPPER, LOCK PIN	1	
51	011206020	BOLT 6X20	2	
52	030206150	WASHER, LOCK M6	2	
53	020106050	NUT M6	2	
55	416351700	LOCK BRACKET, WHEEL	1	
56	416466690	LOCK PIN, WHEEL	1	
57	458450880	SPRING	1	
58	416467240	LOCK KNOB, WHEEL	1	
59	025403016	SPRING PIN 3X16	1	
61	952408960	WASHER, FLAT 6.5X16X1	2	
62	952408980	COLLAR 6.2X9X4	1	
63	419466670	LOCK WIRE, HANDLE	1	
70	011606025	BOLT 6X25	1	
71	030206150	WASHER, LOCK M6	1	
72	020106050	NUT M6	1	

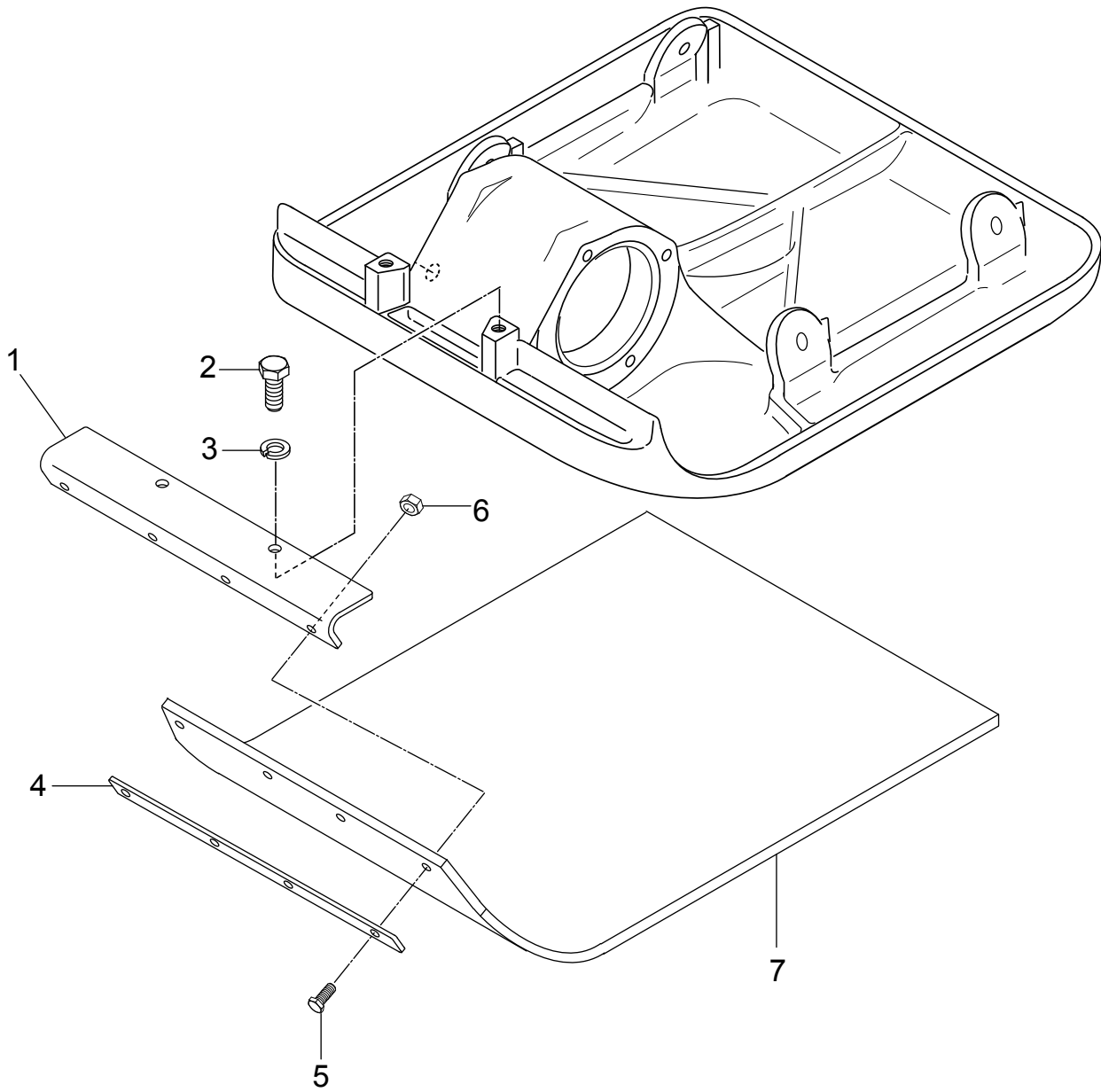
SPRINKLER ASSY.



SPRINKLER ASSY.

<u>NO.</u>	<u>PART NO.</u>	<u>PART NAME</u>	<u>QTY.</u>	<u>REMARKS</u>
A	416910110	WATER TANK W/CAP	1.....	INCLUDES ITEMS W/%
1	033910050	WASHER 14.5X30X1.6	1	
2	953406390	PACKING 13X28X2	1	
3	954403241	COCK PT 1/4"	1	
4	416338930	SPRINKLING PIPE	1	
5	416338940	PIPE HOLDER (L)	1	
6	416452750	PIPE HOLDER (R)	1	
7	001220825	BOLT 8X25	2	
8	0401450080	WASHER, FLAT M8	1	
9	416452790	STAY, PIPE HOLDER	1	
10%	954300342	CAP, WATER TANK	1	
11%	001241030	BOLT 10X30	1	
12%	033910160	WASHER, FLAT M10	2	
13%	022910270	NUT M10	1	

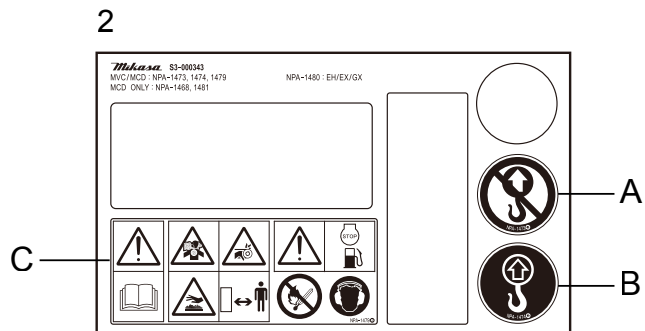
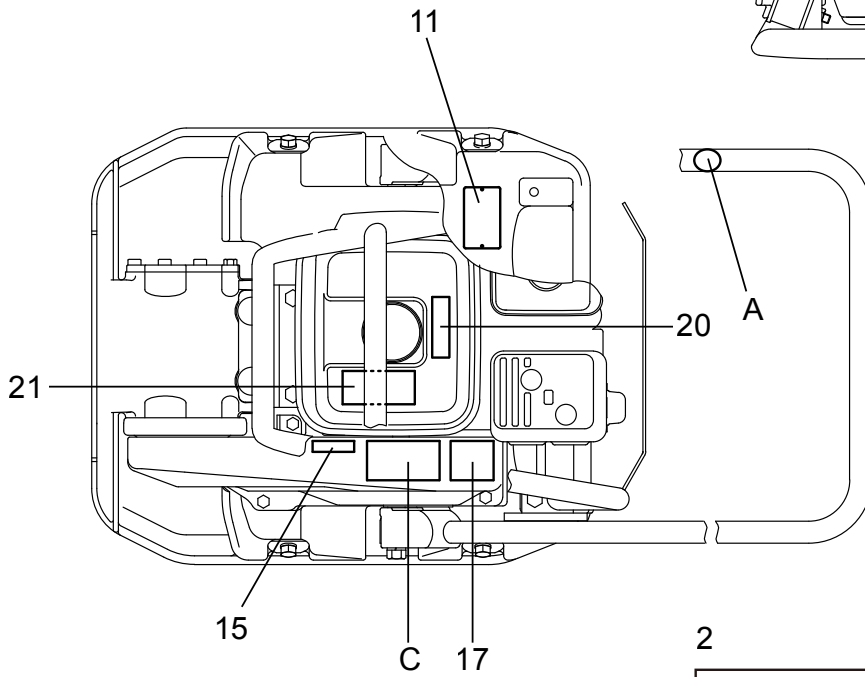
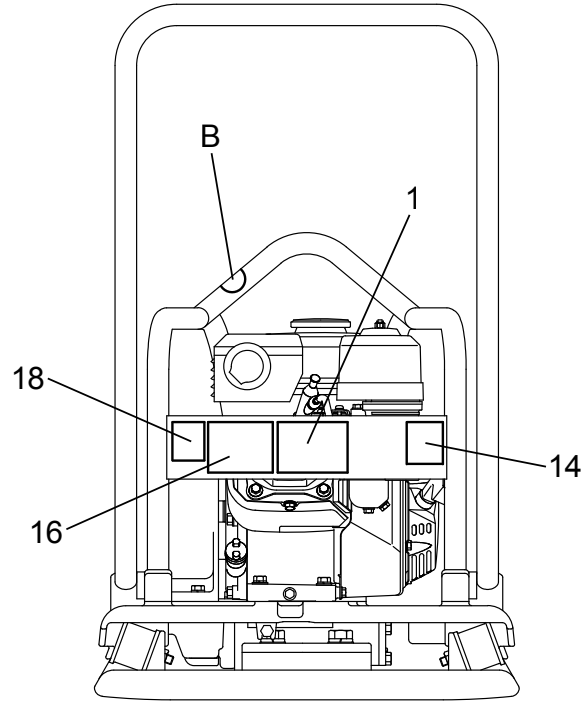
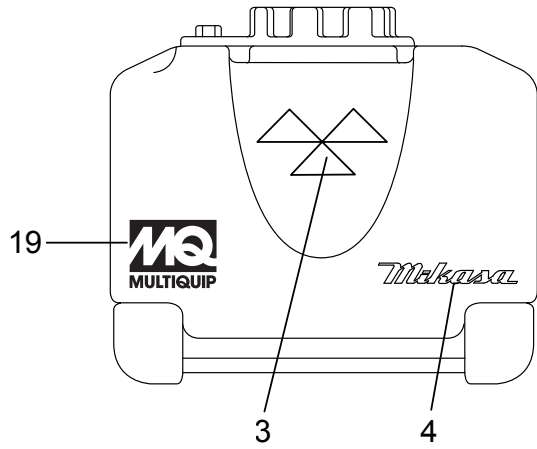
URETHANE PLATE ASSY. (OPTION)



URETHANE PLATE ASSY. (OPTION)

<u>NO.</u>	<u>PART NO.</u>	<u>PART NAME</u>	<u>QTY.</u>	<u>REMARKS</u>
1	416352080	HANGER, URETHANE PLATE	1	
2	001221230	BOLT 12X30	2	
3	030212300	WASHER, LOCK M12	2	
4	416352090	PLATE, URETHANE PLATE	1	
5	011208035	BOLT 8X35	4	
6	022710809	NYLON NUT M8	4	
7	PADUPA88	PAD, URETHANE	1.....	REPLACES P/N 416342390

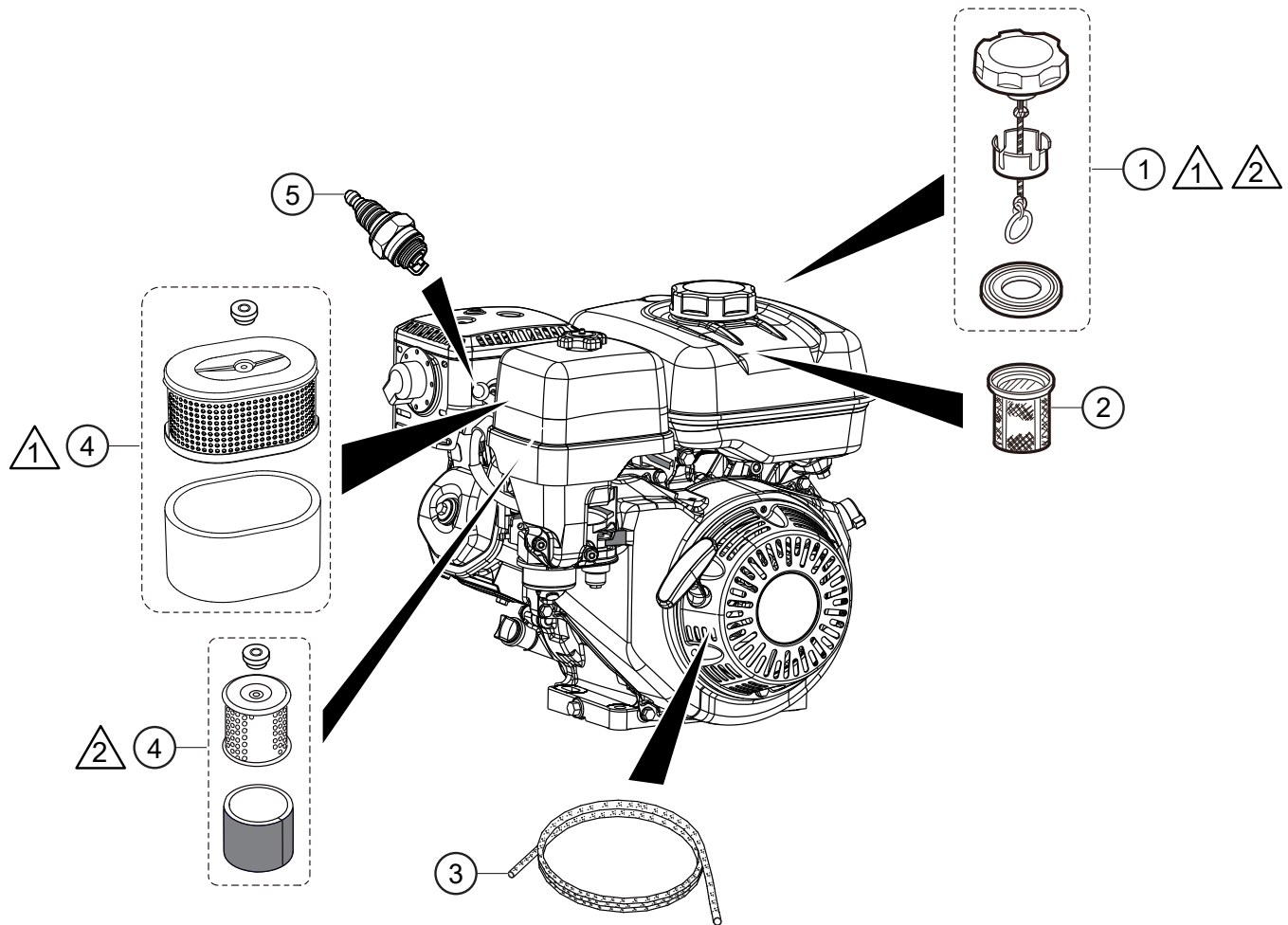
NAMEPLATE AND DECALS ASSY.



NAMEPLATE AND DECALS ASSY.

<u>NO.</u>	<u>PART NO.</u>	<u>PART NAME</u>	<u>QTY.</u>	<u>REMARKS</u>
1	920218170	DECAL, POSITION	1	
2	920900090	DECAL, SET	1.....	SET ONLY
3	920101410	DECAL, MIKASA MARK 120X60	1	
4	920105070	DECAL, MIKASA MARK 125MM	1	
11	920217430	PLATE, SERIAL NO./88VTH	1	
11	920217440	PLATE, SERIAL NO./88VTHW	1	
14	920210330	DECAL, EC NOISE REQ.LWA105	1	
15	920208350	DECAL, V-BELT RPF3330	1	
16	920203290	DECAL, CAUTION	1	
17	920203060	DECAL, CAUTION	1	
18	920206290	DECAL, CAUTION (MANUAL/EXP)	1	
19	920201580	DECAL, MQ MARK 71X55	1	
20	920214100	DECAL, E/G FIRE WARNING	1	
21	920212320	DECAL, FUEL CAUTION	1	

ENGINE SERVICE PARTS



NOTES:

- 1** FOR HONDA GX160UT2QMX2 AND GX160UT2QMXC ENGINES.
- 2** FOR HONDA GX160UT2QCM ENGINE.

ENGINE SERVICE PARTS

<u>NO.</u>	<u>PART NO.</u>	<u>PART NAME</u>	<u>QTY.</u>	<u>REMARKS</u>
1♦	17620Z4H030	CAP COMPLETE, FUEL TANK	1	
1♦♣	17620Z4H900	CAP COMPLETE, FUEL TANK	1	
2	17672Z4H000	FUEL FILTER, FUEL TANK	1	
3	28462ZH8003	ROPE, RECOIL STARTER	1	
4♣	17210Z0V781	ELEMENT, AIR CLEANER	1	
4♦♦	17210ZE1517	ELEMENT, AIR CLEANER	1	
5♦♦	0650140480	SPARK PLUG, EY45V	1	
5♣	9807956846	SPARK PLUG, BPR6ES	1	

NOTICE

- ♦ GX160UT2QMX2
- ♦ GX160UT2QMXC
- ♣ GX160UT2QCM

PARTS MANUAL

HERE'S HOW TO GET HELP

PLEASE HAVE THE MODEL AND SERIAL
NUMBER ON-HAND WHEN CALLING

UNITED STATES

Multiquip Inc.

(310) 537- 3700
6141 Katella Avenue Suite 200
Cypress, CA 90630
E-MAIL: mq@multiquip.com
WEBSITE: www.multiquip.com

CANADA

Multiquip

(450) 625-2244
4110 Industriel Boul.
Laval, Quebec, Canada H7L 6V3
E-MAIL: infocanada@multiquip.com

UNITED KINGDOM

Multiquip (UK) Limited Head Office

0161 339 2223
Unit 2, Northpoint Industrial Estate, Globe Lane,
Dukinfield, Cheshire SK16 4UJ
E-MAIL: sales@multiquip.co.uk

© COPYRIGHT 2023, MULTIQUIP INC.

Multiquip Inc, the MQ logo are registered trademarks of Multiquip Inc. and may not be used, reproduced, or altered without written permission. All other trademarks are the property of their respective owners and used with permission.

This manual MUST accompany the equipment at all times. This manual is considered a permanent part of the equipment and should remain with the unit if resold.

The information and specifications included in this publication were in effect at the time of approval for printing. Illustrations, descriptions, references and technical data contained in this manual are for guidance only and may not be considered as binding. Multiquip Inc. reserves the right to discontinue or change specifications, design or the information published in this publication at any time without notice and without incurring any obligations.

