

# PARTS MANUAL



*Mikasa*

**MODEL MVH208GH**  
**REVERSIBLE PLATE COMPACTOR**  
**(S/N F2108 AND BELOW - HONDA GX240UT2SM/  
GX270UT2XSCM GASOLINE ENGINE)**  
**(S/N F2115 AND ABOVE - HONDA GX270UT2SCM  
GASOLINE ENGINE)**

Revision #6 (06/19/26)

To find the latest revision of this publication or  
associated operation manual, visit our website  
at: [www.multiquip.com](http://www.multiquip.com)



**MVH208GH**

**Reversible Plate Compactor**

Explanation of Code in Remarks Column..... 4  
Suggested Spare Parts ..... 5

**Component Drawings**

Vibrating Plate Assembly ..... 6-7  
Vibrator Assembly ..... 8-9  
Base and Engine Assembly ..... 10-13  
Electrical Device Assembly ..... 14-15  
Control Assembly ..... 16-19  
Hydraulic Hand Pump Assembly ..... 20-21  
Nameplate and Decals Assembly ..... 22-23  
Engine Service Parts ..... 24-25

**NOTICE**

Specifications and part numbers are subject to change without notice.



# EXPLANATION OF CODE IN REMARKS COLUMN

The following section explains the different symbols and remarks used in the Parts section of this manual. Use the help numbers found on the back page of the manual if there are any questions.

## NOTICE

The contents and part numbers listed in the parts section are subject to change without notice. Multiquip does not guarantee the availability of the parts listed.

## SAMPLE PARTS LIST

NO.	PART NO.	PART NAME	QTY.	REMARKS
1	12345	BOLT .....	1	INCLUDES ITEMS W/%
2%		WASHER, 1/4 IN. ....		NOT SOLD SEPARATELY
2%	12347	WASHER, 3/8 IN. ...	1	MQ-45T ONLY
3	12348	HOSE .....	A/R	MAKE LOCALLY
4	12349	BEARING .....	1	S/N 2345B AND ABOVE

## NO. Column

**Unique Symbols** — All items with same unique symbol (@, #, +, %, or >) in the number column belong to the same assembly or kit, which is indicated by a note in the “Remarks” column.

**Duplicate Item Numbers** — Duplicate numbers indicate multiple part numbers, which are in effect for the same general item, such as different size saw blade guards in use or a part that has been updated on newer versions of the same machine.

## NOTICE

When ordering a part that has more than one item number listed, check the remarks column for help in determining the proper part to order.

## PART NO. Column

**Numbers Used** — Part numbers can be indicated by a number, a blank entry, or TBD.

TBD (To Be Determined) is generally used to show a part that has not been assigned a formal part number at the time of publication.

A blank entry generally indicates that the item is not sold separately or is not sold by Multiquip. Other entries will be clarified in the “Remarks” Column.

## QTY. Column

**Numbers Used** — Item quantity can be indicated by a number, a blank entry, or A/R.

A/R (As Required) is generally used for hoses or other parts that are sold in bulk and cut to length.

A blank entry generally indicates that the item is not sold separately. Other entries will be clarified in the “Remarks” Column.

## REMARKS Column

Some of the most common notes found in the “Remarks” Column are listed below. Other additional notes needed to describe the item can also be shown.

**Assembly/Kit** — All items on the parts list with the same unique symbol will be included when this item is purchased.

Indicated by:

“INCLUDES ITEMS W/(unique symbol)”

**Serial Number Break** — Used to list an effective serial number range where a particular part is used.

Indicated by:

“S/N XXXXX AND BELOW”

“S/N XXXX AND ABOVE”

“S/N XXXX TO S/N XXX”

**Specific Model Number Use** — Indicates that the part is used only with the specific model number or model number variant listed. It can also be used to show a part is NOT used on a specific model or model number variant.

Indicated by:

“XXXXX ONLY”

“NOT USED ON XXXX”

**“Make/Obtain Locally”** — Indicates that the part can be purchased at any hardware shop or made out of available items. Examples include battery cables, shims, and certain washers and nuts.

**“Not Sold Separately”** — Indicates that an item cannot be purchased as a separate item and is either part of an assembly/kit that can be purchased, or is not available for sale through Multiquip.

## SUGGESTED SPARE PARTS

### MVH208GH PLATE COMPACTOR WITH HONDA GX240UT2SMXC/GX270UT2XSCM/GX270UT2SCM GASOLINE ENGINE

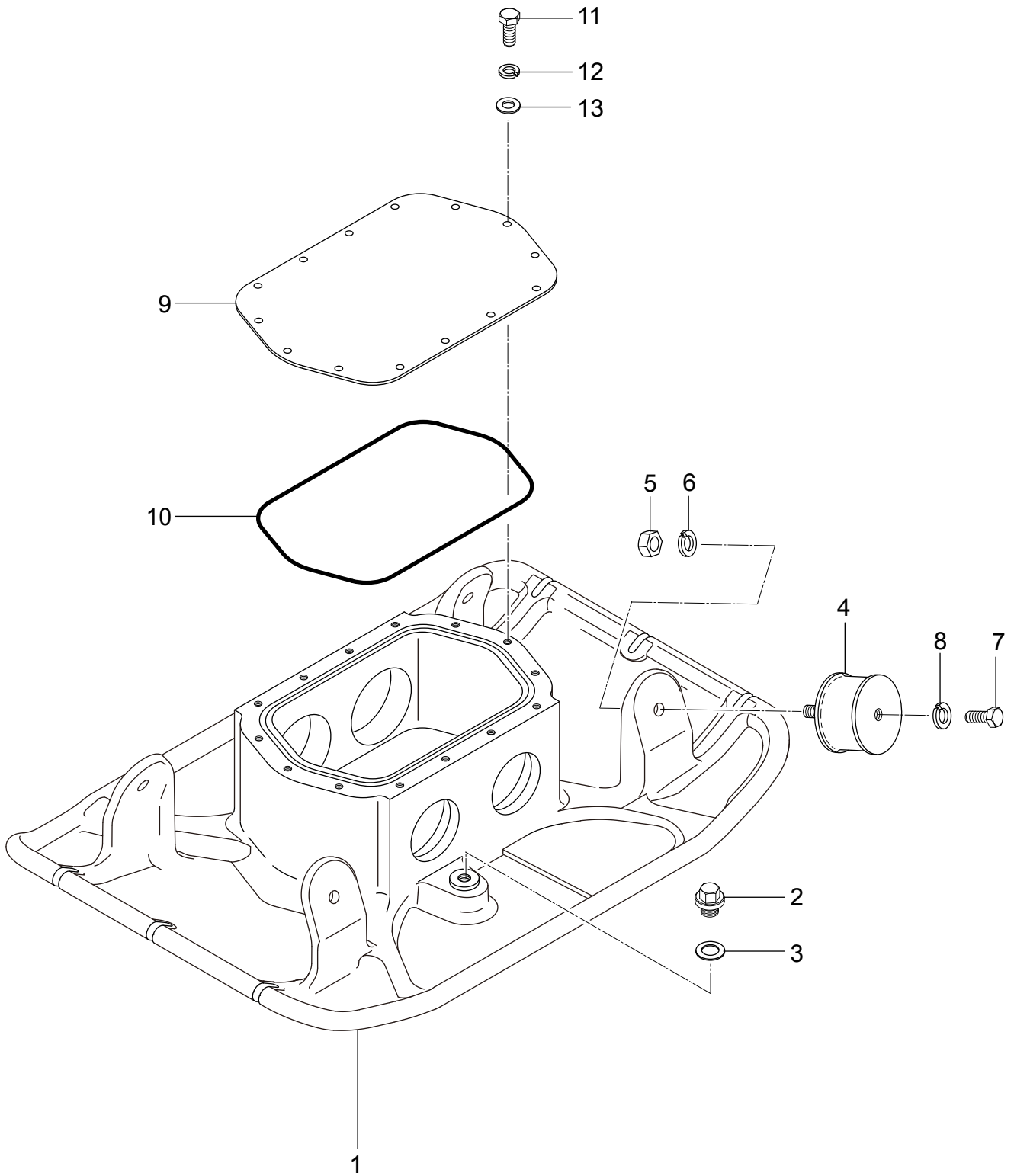
1 to 5 units

Qty.	P/N	Description
3	.....070200383.....	V-BELT
5	.....9807956855.....	SPARK PLUG (GX240UT2SMXC)
5	.....9807956846.....	SPARK PLUG (GX270UT2SCM)
1	.....28462ZE2W11 .....	ROPE, RECOIL STARTER
5	.....17210ZE3505 .....	ELEMENT, AIR CLEANER (GX240UT2SMXC)
5	.....17210Z1C781 .....	ELEMENT, AIR CLEANER (GX270UT2SCM)
1	.....17620Z4H900 .....	CAP, FUEL TANK
1	.....17672Z4H000 .....	FUEL FILTER, FUEL TANK
4	.....939010480.....	SHOCK ABSORBER

#### NOTICE

Part numbers on this Suggested Spare Parts list may supersede/replace the part numbers shown in the following parts lists.

# VIBRATING PLATE ASSY.

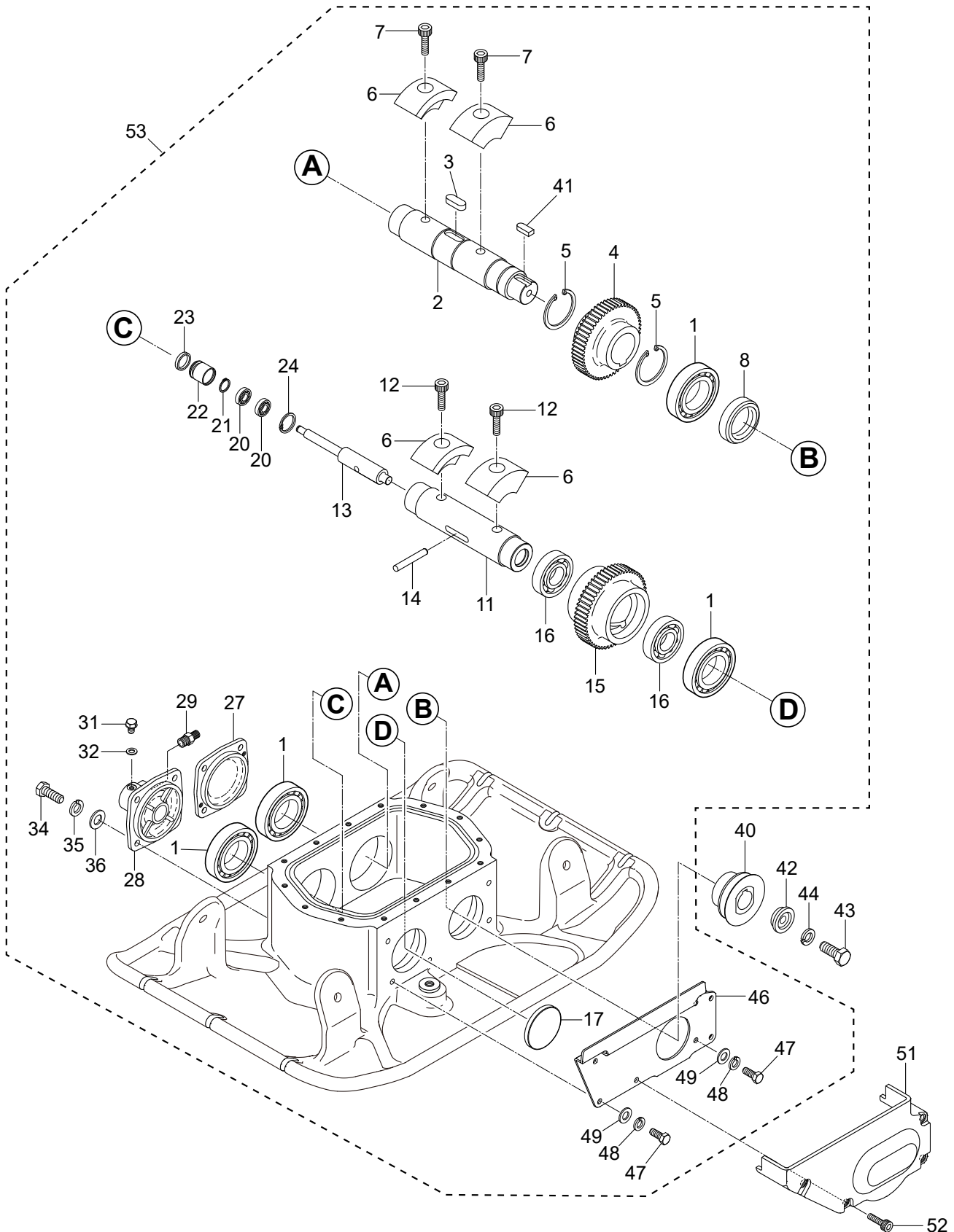


## VIBRATING PLATE ASSY.

---

<u>NO.</u>	<u>PART NO.</u>	<u>PART NAME</u>	<u>QTY.</u>	<u>REMARKS</u>
1	470121760	VIBRATING PLATE, 500MM	1	
2	953405270	PLUG 1/4X14 13L	1	
3	953405260	PACKING 1/4 (CU)	1	
4	939010480	SHOCK ABSORBER	4	
5	0039312000	NUT M12.....	4.....	REPLACES P/N 020312100
6	030212300	WASHER, LOCK M12	4	
7	012012030	BOLT 12X30 .....	4.....	REPLACES P/N 001221230
8	030212300	WASHER, LOCK M12	4	
9	470353610	COVER, VIBRATOR	1	
10	050710150	O-RING	1	
11	014208020	BOLT 8X20 .....	14.....	REPLACES P/N 001220820
12	030208200	WASHER, LOCK M8	14	
13	0401450080	WASHER, FLAT M8.....	14.....	REPLACES P/N 031108160

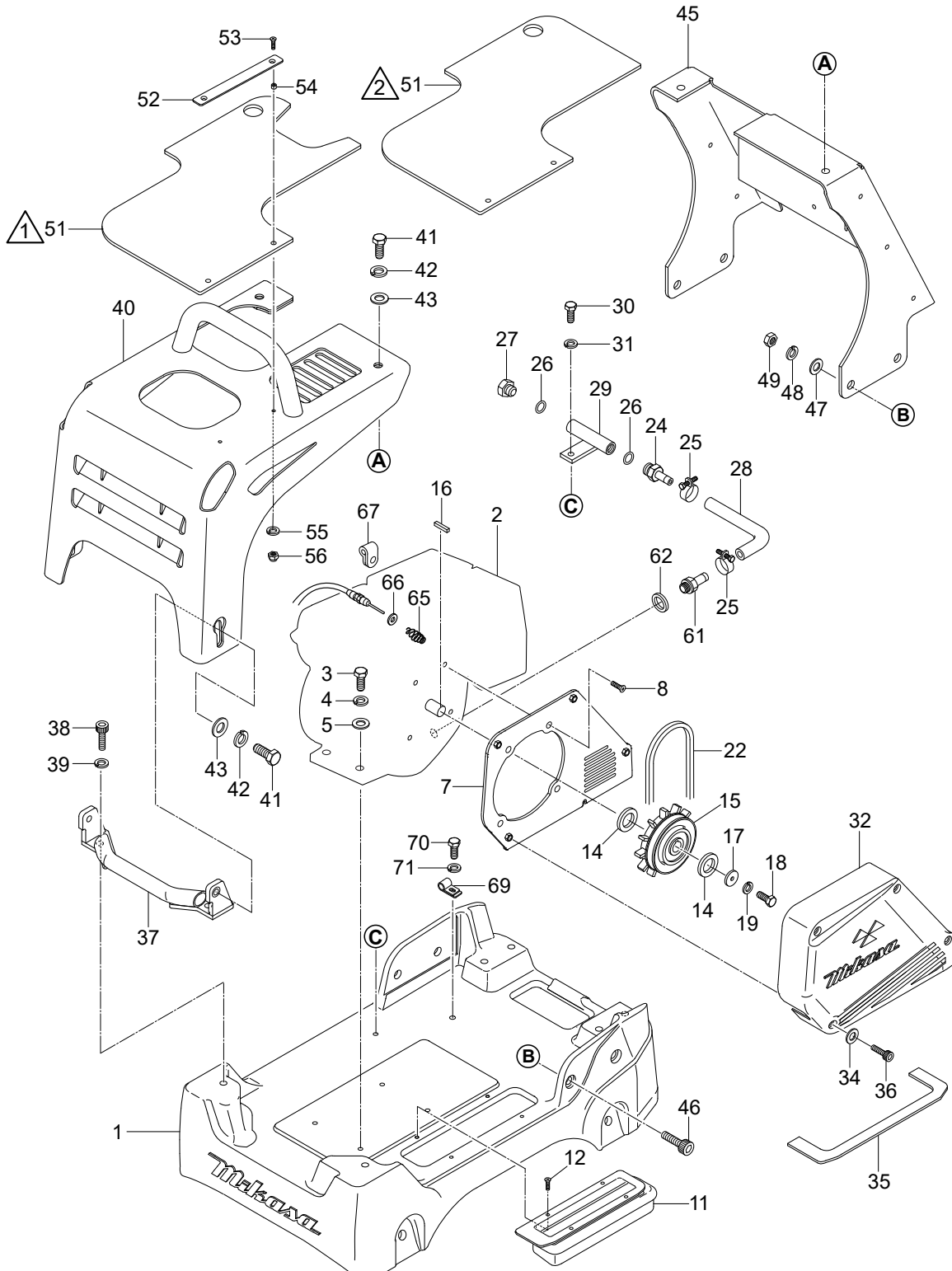
# VIBRATOR ASSY.



# VIBRATOR ASSY.

<u>NO.</u>	<u>PART NO.</u>	<u>PART NAME</u>	<u>QTY.</u>	<u>REMARKS</u>
1#	047920130	ROLLER BEARING	4	
2#	470353710	ROTARY SHAFT, DRIVE	1	
3#	951405370	KEY 15X10X39 RR	1	
4#	466347900	GEAR, DRIVE	1	
5#	080200500	STOP RING	2	
6#	470353760	ECCENTRIC ROTATOR	4	
7#	009120309	SOCKET HEAD BOLT 12X40	2	
8#	060104020	OIL SEAL	1	
11#	466347790	ROTARY SHAFT, DRIVEN	1	
12#	009120308	SOCKET HEAD BOLT 12X25	2	
13#	466347860	PISTON ROD	1	
14#	025510063	KNOCK PIN 10X63	1	
15#	470353720	GEAR, DRIVEN	1	
16#	040006910	BEARING	2	
17#	953010040	SEAL CAP	1	
20#	042506000	BEARING	2	
21#	0080000010	STOP RING .....	1.....	REPLACES P/N 080200100
22#	455435051	PISTON	1	
23#	455010070	PACKING	1	
24#	080100260	STOP RING	1	
27#	470353730	BEARING COVER	1	
28#	470353740	CYLINDER (R)	1	
29#	954010020	CONNECTOR PT, PF1/4	1	
31#	011008015	BOLT 8X12 .....	1.....	REPLACES P/N 001220812
32#	953404600	COPPER PACKING 8.2X16X1.6	1	
34#	001220825	BOLT 8X25 .....	8.....	REPLACES P/N 011208025
35#	030208200	WASHER, LOCK M8	8	
36#	0401450080	WASHER, FLAT M8.....	8.....	REPLACES P/N 031108160
40	470353770	PULLEY	1	
41#	951403610	KEY 10X8X30	1	
42	470468730	WASHER	1	
43	012012030	BOLT 12X30 .....	1.....	REPLACES P/N 001221230
44	030212300	WASHER, LOCK M12	1	
46#	470353750	GUIDE, BELT COVER	1	
47#	014208020	BOLT 8X20 .....	3.....	REPLACES P/N 001220820
48#	030208200	WASHER, LOCK M8	3	
49#	031108160	WASHER, FLAT M8	3	
51	470219540	BELT COVER, LOWER	1	
52	001520854	SOCKET HEAD BOLT 8X70	4	
53	470910100	VIBRATOR AND PLATE ASSY. ....	1.....	INCLUDES ITEMS W/#

# BASE AND ENGINE ASSY.



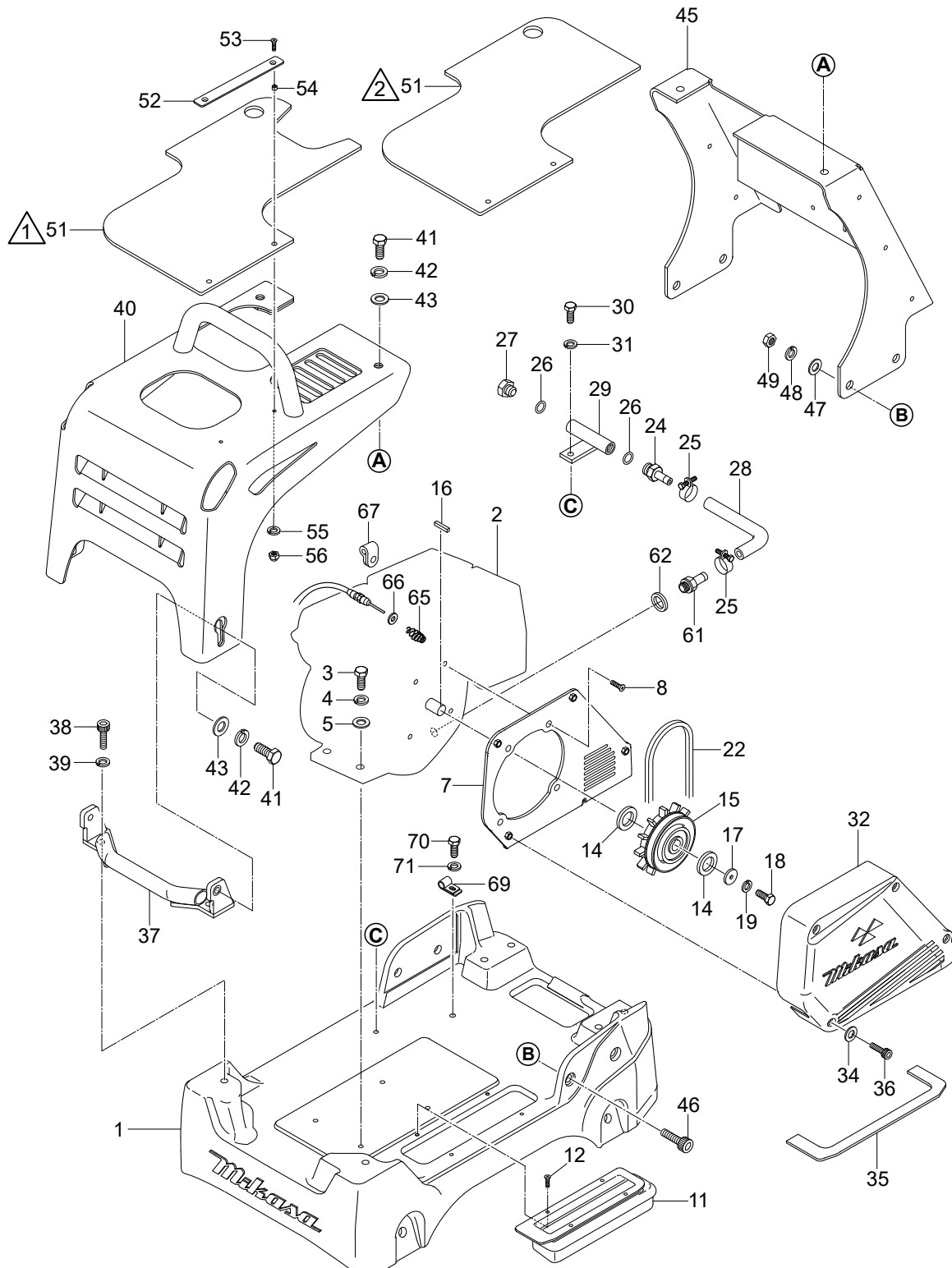
**NOTES:**

- ① ITEM 51 P/N 470468810 IS FOR COMPACTOR WITH GX240UT2SMXC ENGINE.
- ② ITEM 51 P/N 470473340 IS FOR COMPACTOR WITH GX270UT2XSCM AND GX270UT2SCM ENGINE.

## BASE AND ENGINE ASSY.

<u>NO.</u>	<u>PART NO.</u>	<u>PART NAME</u>	<u>QTY.</u>	<u>REMARKS</u>
1	470121850	BASE	1	
2	912227013	ENGINE ASSY., GX270UT2XSCM.....	1.....	S/N F2108 AND BELOW REPLACES P/N 912224006 GX240UT2SMXC ENGINE S/N F2115 AND ABOVE REPLACES P/N 912227009 GX270UT2SCM ENGINE
3	0105051045	BOLT 10X45 .....	4.....	REPLACES P/N 001221045
4	030210250	WASHER, LOCK M10	4	
5	031110160	WASHER, FLAT M10	4	
7	470353680	BELT COVER, IN	1	
8	009110071	SOCKET HEAD BOLT 10X25	4	
11	470219530	DUST COVER	1	
12	092006010	FLAT HEAD SCREW 6X10	4	
14	952409450	SPACER 25X40X5	2	
15	456343340	CLUTCH ASSY.	1	
16	951400110	KEY 7X7X35	1	
17	952400690	WASHER 9X35X4.5	1	
18	011208030	BOLT 8X30 .....	1.....	REPLACES P/N 001220830
19	030208200	WASHER, LOCK M8	1	
22	070200383	V-BELT B-38 GREEN	1	
24	954407310	UNION, DRAIN	1	
25	954010300	HOSE CLAMP .....	2.....	S/N F2108 AND BELOW WITH GX240UT2SMXC ENGINE REPLACES P/N 009172000
25	954410120	HOSE CLAMP .....	2.....	S/N F2108 AND BELOW WITH GX270UT2XSCM ENGINE S/N F2115 AND ABOVE WITH GX270UT2SCM ENGINE
26	0211140020	GASKET	2	
27	0401140030	PLUG	1	
28	465459390	DRAIN HOSE	1	
29	464457380	DRAIN JOINT	1	
30	014208020	BOLT 8X20 .....	1.....	REPLACES P/N 001220820
31	030208200	WASHER, LOCK M8	1	
32	470121780	BELT COVER (OUT)	1	
34	033910220	WASHER 8.4X15.5X1.6	4	
35	470353640	DUST SPONGE (OUT)	1	
36	001520854	SOCKET HEAD BOLT 8X70	4	
37	470353650	FRONT BUMPER	1	
38	014212035	SOCKET HEAD BOLT 12X35.....	2.....	REPLACES P/N 001521235
39	030212300	WASHER, LOCK M12	2	
40	470122870-OR	FRONT COVER	1	

# BASE AND ENGINE ASSY. (CONT'D.)



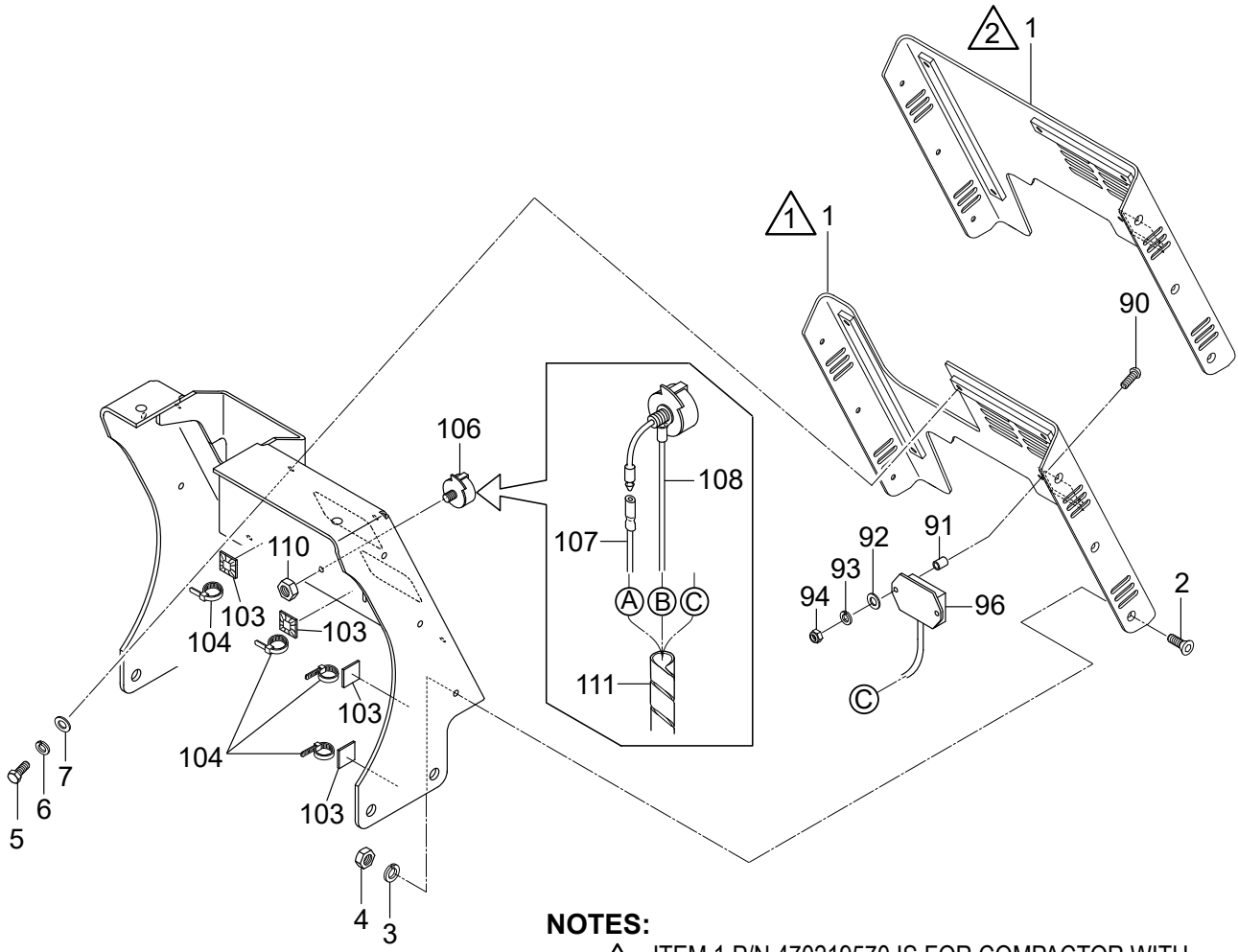
**NOTES:**

- ① ITEM 51 P/N 470468810 IS FOR COMPACTOR WITH GX240UT2SMXC ENGINE.
- ② ITEM 51 P/N 470473340 IS FOR COMPACTOR WITH GX270UT2XSCM AND GX270UT2SCM ENGINE.

## BASE AND ENGINE ASSY. (CONT'D.)

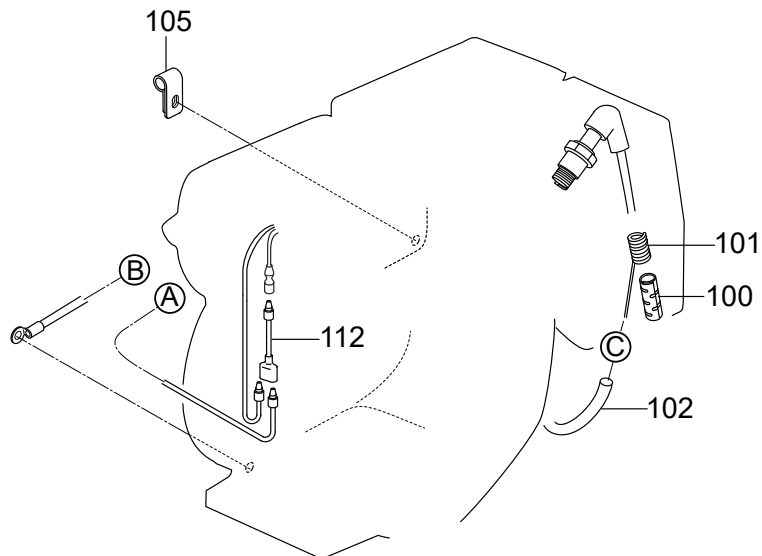
<u>NO.</u>	<u>PART NO.</u>	<u>PART NAME</u>	<u>QTY.</u>	<u>REMARKS</u>
41	012212035	BOLT 12X35 .....	4.....	REPLACES P/N 001221235
42	030212300	WASHER, LOCK M12	4	
43	031112230	WASHER, FLAT M12	4	
45	470122880	CENTER COVER	1	
46	014212035	SOCKET HEAD BOLT 12X35.....	4.....	REPLACES P/N 001521235
47	031112230	WASHER, LOCK M12	4	
48	030212300	WASHER, FLAT M12	4	
49	0039312000	NUT M12.....	4.....	REPLACES P/N 020312100
51	470468810	RUBBER COVER, UPPER.....	1.....	S/N F2108 AND BELOW WITH GX240UT2SMXC ENGINE
51	470473340	RUBBER COVER, UPPER.....	1.....	S/N F2108 AND BELOW WITH GX270UT2XSCM ENGINE S/N F2115 AND ABOVE WITH GX270UT2SCM
52	467466810	STOPPER, COVER	1	
53	009120424	SOCKET HEAD BOLT 6X25	2	
54	617465130	COLLAR 6.2X7.8X4.5	2	
55	030206150	WASHER, LOCK M6	2	
56	022710607	NYLON NUT M6	2	
61	90131ZE3790	DRAIN JOINT	1	
62	031112230	WASHER, DRAIN PLUG M12 .....	1.....	REPLACES P/N 9410912000
65	402010110	COIL SPRING .....	1.....	REPLACES P/N 0830000010
66	58151	WASHER, FLAT M5 .....	1.....	REPLACES P/N 031105080
67	2067550101	CLAMP COMPLETE	1	
69	959407260	CLIP D6	1	
70	012210015	BOLT 10X15 .....	1.....	REPLACES P/N 001221015
71	030210250	WASHER, LOCK M10	1	

# ELECTRICAL DEVICE ASSY.



**NOTES:**

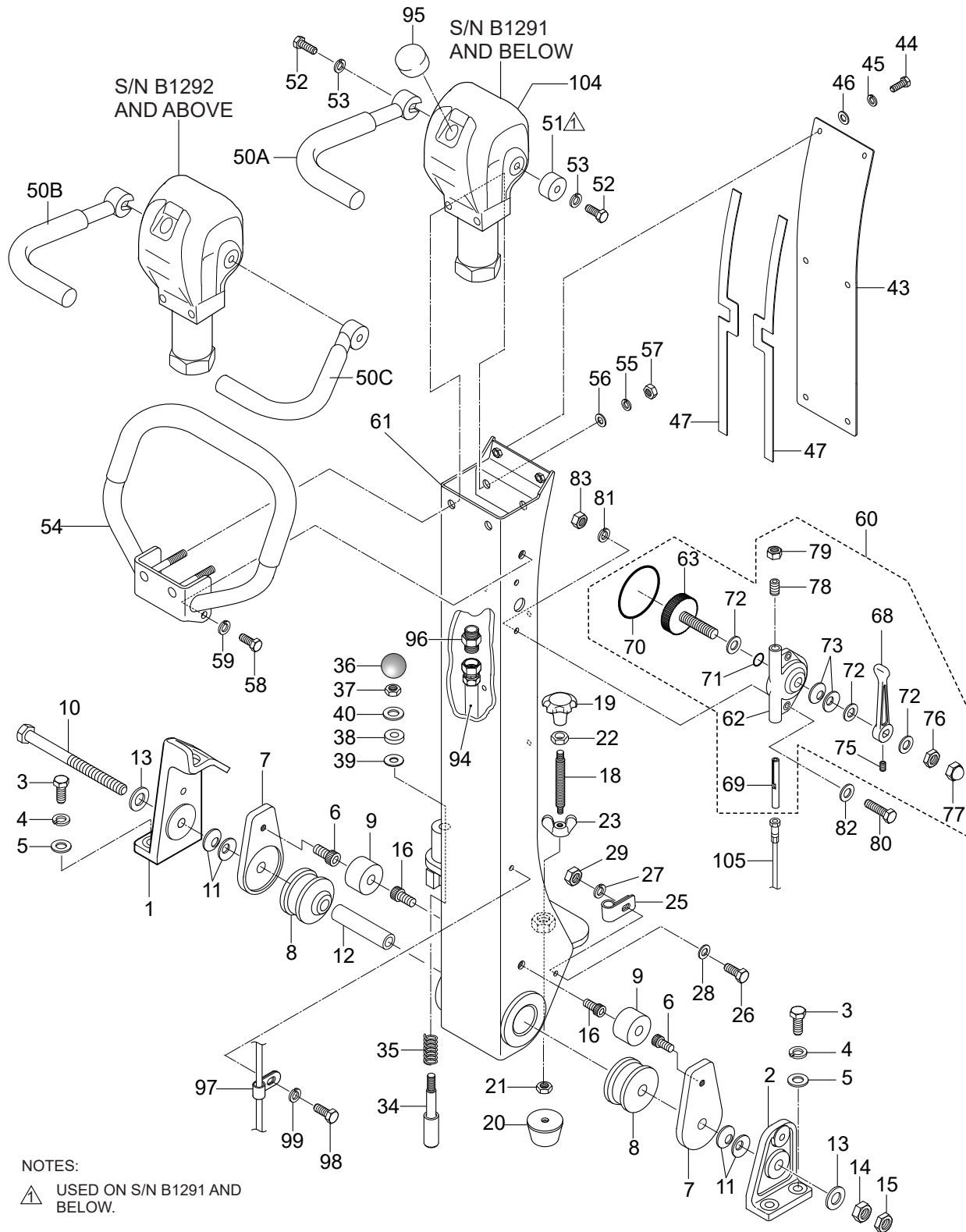
- ⚠️ ITEM 1 P/N 470219570 IS FOR COMPACTOR WITH GX240UT2SMXC ENGINE.
- ⚠️ ITEM 1 P/N 470220290 IS FOR COMPACTOR WITH GX270UT2XSCM AND GX270UT2SCM ENGINE.



## ELECTRICAL DEVICE ASSY.

<u>NO.</u>	<u>PART NO.</u>	<u>PART NAME</u>	<u>QTY.</u>	<u>REMARKS</u>
1	470219570	REAR COVER .....	1.....	S/N F2108 AND BELOW WITH GX240UT2SMXC ENGINE
1	470220290	REAR COVER .....	1.....	S/N F2108 AND BELOW WITH GX270UT2XSCM ENGINE S/N F2115 AND ABOVE WITH GX270UT2SCM ENGINE
2	009120414	SUNK HEAD BOLT 6X20	6	
3	030206150	WASHER, LOCK M6	6	
4	020106050	NUT M6.....	6.....	REPLACES P/N 020306050
5	001220612	BOLT 6X12	5	
6	030206150	WASHER, LOCK M6	5	
7	952404470	WASHER, FLAT M6.....	5.....	REPLACES P/N 031106100
90	009110072	PAN HEAD SCREW 5X35	2	
91	952407930	COLLAR 6X10X13.5	2	
92	58151	WASHER, FLAT M5.....	2.....	REPLACES P/N 031105080
93	030205130	WASHER, FLAT M5	2	
94	022710506	NYLON NUT M5	2	
96	955010311	TACH/HOUR METER	1	
100	955010307	CLIP BELT	1	
101	955010308	CURL CORD	1	
102	959026828	RUBBER TUBE	1	
103	955407970	WIRING FIXED BASE	4	
104	506010070	CLAMP	4	
105	2067550101	CLAMP COMPLETE	1	
106	955301010	STOP SWITCH, ENGINE	1	
107	468467570	READ CORD	1	
108	467466980	LEAD WIRE (SW-GROUND)	1	
110	020108060	NUT M8.....	1.....	REPLACES P/N 020308060
111	959021827	SPIRAL TUBE 6D-950L	1	
112	515450380	WIRE HARNESS	1	

# CONTROL ASSY.



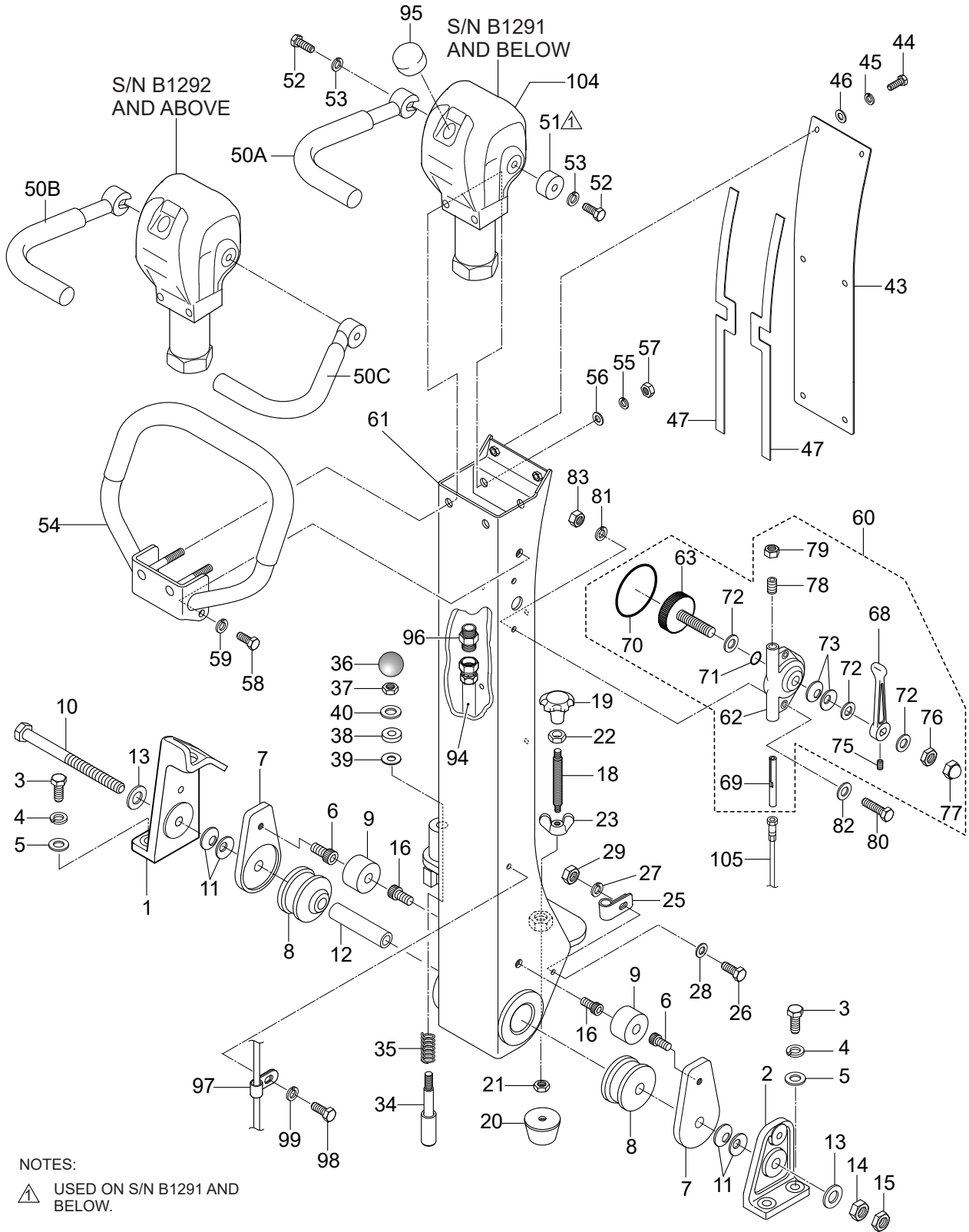
**NOTES:**

△ USED ON S/N B1291 AND BELOW.

## CONTROL ASSY.

<u>NO.</u>	<u>PART NO.</u>	<u>PART NAME</u>	<u>QTY.</u>	<u>REMARKS</u>
1	467351951	HANDLE BRACKET (R)	1	
2	456336420	HANDLE BRACKET (R)	1	
3	012212035	BOLT 12X35 .....	4	REPLACES P/N 001221235
4	030212300	WASHER, LOCK M12	4	
5	031112230	WASHER, FLAT M12	4	
6	001521010	SOCKET HEAD BOLT 10X10	2	
7	470468800	GUIDE, HANDLE	2	
8	456449940	SHOCK ABSORBER	2	
9	470468900	CUSHION RUBBER 16X50X30	2	
10	001221681	BOLT 16X250	1	
11	032216350	CONICAL WASHER, LOCK M16	4	
12	470469100	RUBBER TUBE 15.9X25X120L	1	
13	0401450160	WASHER, FLAT M16.....	2	REPLACES P/N 031116260
14	020316130	NUT M16	1	
15	020416100	NUT M16	1	
16	470468920	BOLT, CUSHION RUBBER	2	
18	455434950	SPINDLE	1	
19	455010030	KNOB	1	
20	939009470	STOPPER RUBBER	1	
21	020310080	NUT M10.....	1	REPLACES P/N 020410060
22	020412070	NUT M12	1	
23	022411635	WING NUT M16	1	
25	959408930	CLIP 15 (M6)	1	
26	011206020	BOLT 6X20 .....	1	REPLACES P/N 001220620
27	030206150	WASHER, LOCK M6	1	
28	952404470	WASHER, FLAT M6.....	1	REPLACES P/N 031106100
29	020106050	NUT M6.....	1	REPLACES P/N 020306050
34	501402870	HANDLE STOPPER	1	
35	501402880	SPRING/HANDLE	1	
36	959403460	BALL GRIP	1	
37	020310080	NUT M10.....	1	REPLACES P/N 020410060
38	456449980	RUBBER PACKING	1	
39	953405260	PACKING 1/4	1	
40	031110160	WASHER, FLAT M10	1	
43	466217890	HANDLE COVER	1	
44	011206020	BOLT 6X20 .....	6	REPLACES P/N 001220620
45	030206150	WASHER, LOCK M6	6	
46	952404470	WASHER, FLAT M6.....	6	REPLACES P/N 031106100
47	466462010	PACKING, HANDLE COVER	2	
50A	464216630	TRAVEL LEVER, RIGHT .....	1	S/N B1291 AND BELOW
50B	464216820	TRAVEL LEVER, RIGHT .....	1	S/N B1292 AND ABOVE
50C	464216830	TRAVEL LEVER, LEFT.....	1	S/N B1292 AND ABOVE
51	464457400	HANDLE BOSS .....	1	S/N B1291 AND BELOW

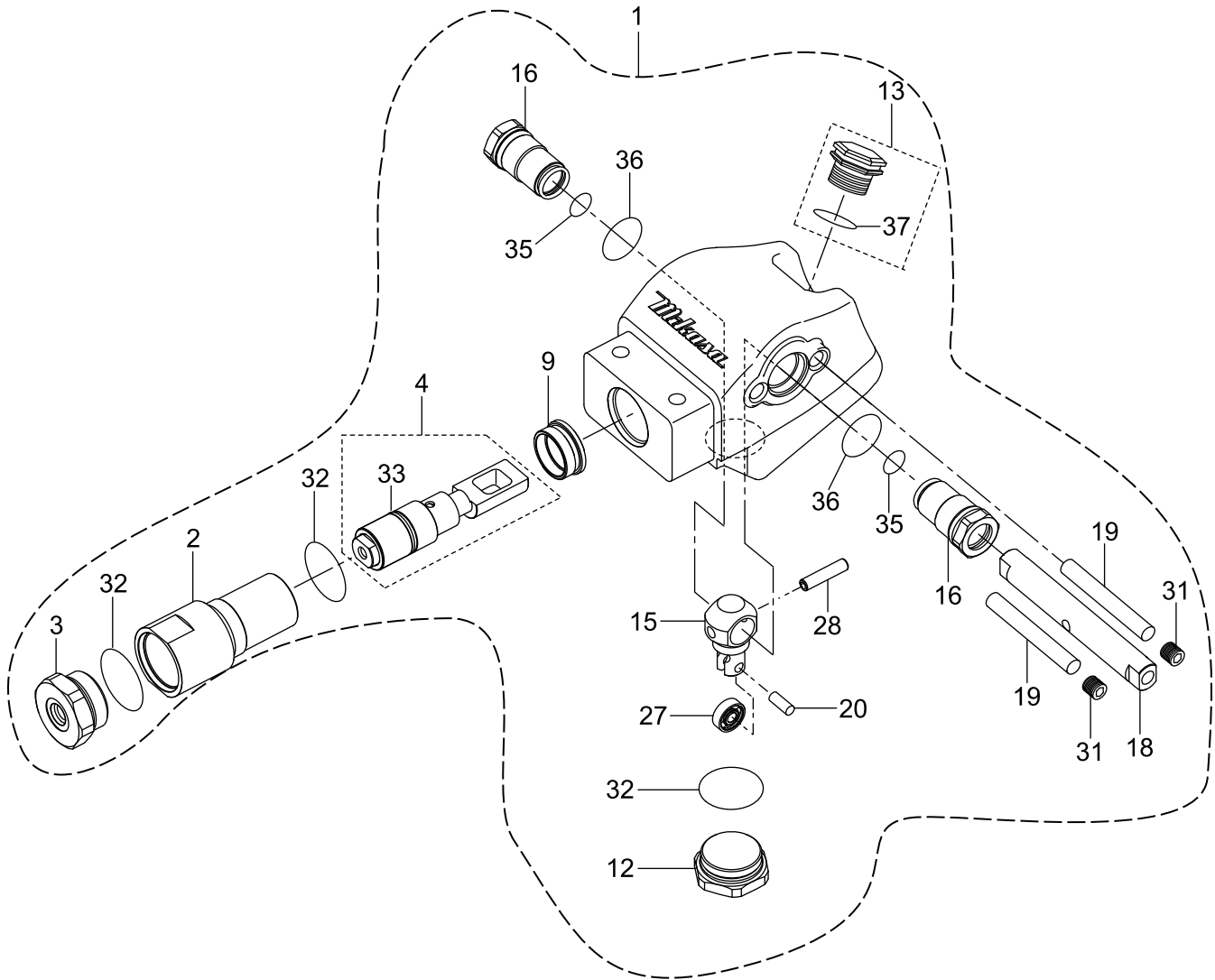
# CONTROL ASSY. (CONT'D.)



## CONTROL ASSY. (CONT'D.)

<u>NO.</u>	<u>PART NO.</u>	<u>PART NAME</u>	<u>QTY.</u>	<u>REMARKS</u>
52	012010030	BOLT 10X30 .....	2	REPLACES P/N 001221030
53	030210250	WASHER, LOCK M10	2	
54	467218900	GRIP	1	
55	030210250	WASHER, LOCK M10	2	
56	031110160	WASHER, FLAT M10	2	
57	020310080	NUT M10	2	
58	0105091025	BOLT 10X25 .....	2	REPLACES P/N 001221025
59	030210250	WASHER, LOCK M10	2	
60	466910050	THROTTLE LEVER ASSY. ....	1	INCLUDES ITEMS W/#
61	470121870	HANDLE BAR	1	
62#	362341550	THROTTLE BODY	1	
63#	362910090	THROTTLE, GEAR COMPLETE, W/BOLT	1	
68#	362455630	THROTTLE LEVER	1	
69#	362455620	SLIDER	1	
70#	050100450	O-RING	1	
71#	050200100	O-RING	1	
72#	031110160	WASHER, FLAT M10	3	
73#	032110180	CONICAL WASHER, LOCK M10	2	
75#	096206006	SOCKET HEAD SCREW 6X6	1	
76#	020310080	NUT M10.....	1	REPLACES P/N 020410060
77#	022131008	CAP NUT M10	1	
78#	014208020	SOCKET HEAD SCREW 8X20 .....	1	REPLACES P/N 096208020
79#	020408050	NUT M8	1	
80	011606025	BOLT 6X25 .....	1	REPLACES P/N 001220625
81	030206150	WASHER, LOCK M6	1	
82	952404470	WASHER, FLAT M6.....	1	REPLACES P/N 031106100
83	020106050	NUT M6.....	1	REPLACES P/N 020306050
94	954003280	OIL HOSE 1100L	1	
95	458451630	BREATHER CAP	1	
96	954003150	MALE CONNECTOR, O-RING 1/4	1	
97	2067550101	CLAMP COMPLETE	1	
98	0105050616	BOLT 6X15 .....	1	REPLACES P/N 001220615
99	030206150	WASHER, LOCK M6	1	
104	470219590	HAND PUMP	1	
105	956100074	THROTTLE WIRE 1540	1	

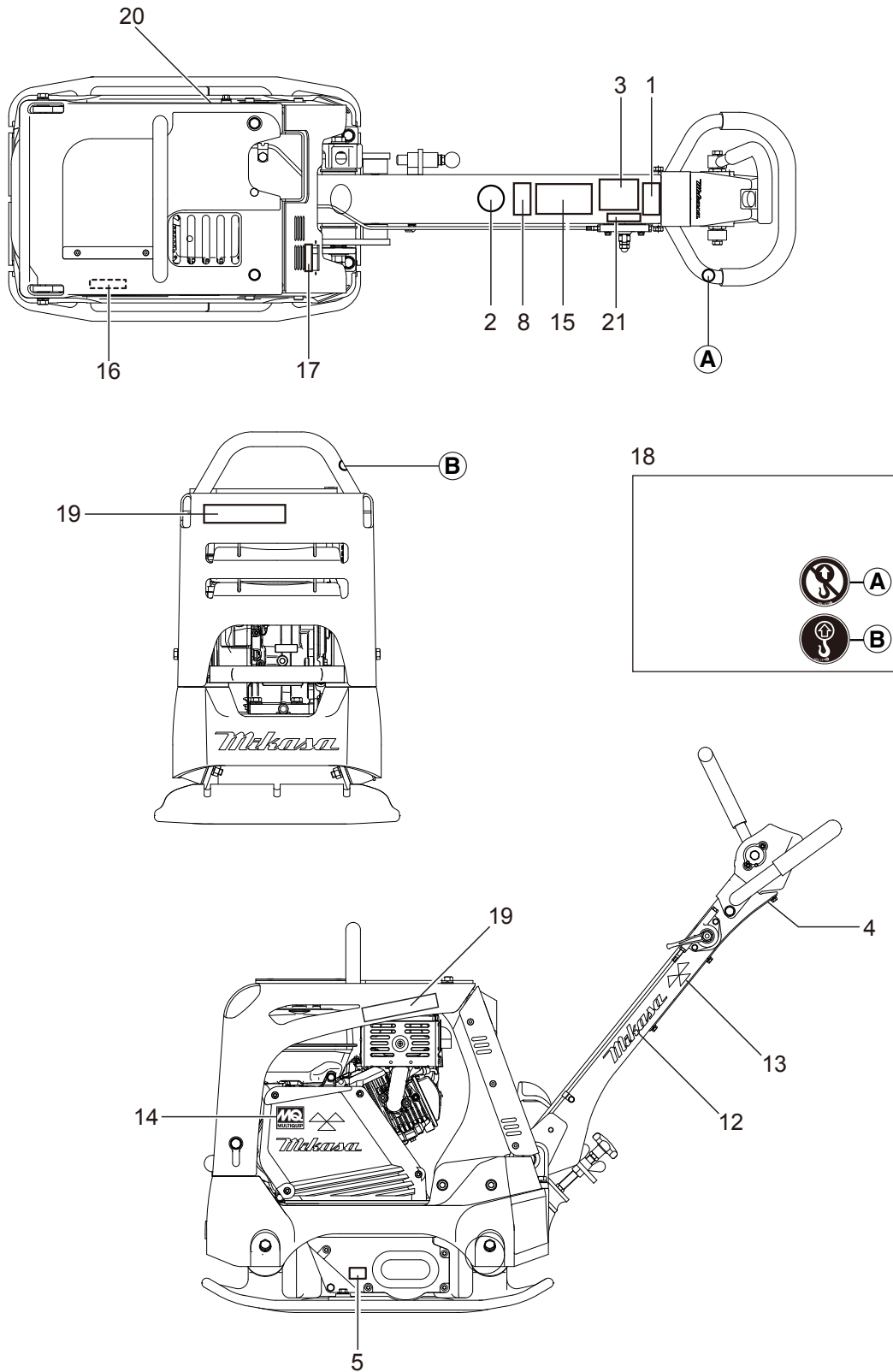
# HYDRAULIC HAND PUMP ASSY.



## HYDRAULIC HAND PUMP ASSY.

<u>NO.</u>	<u>PART NO.</u>	<u>PART NAME</u>	<u>QTY.</u>	<u>REMARKS</u>
1	470219590	HAND PUMP ASSY.....	1.....	INCLUDES ITEMS W/#
2#	470353850	CYLINDER	1	
3#	470469040	CYLINDER CAP	1	
4#	470910020	VALVE ASSY.....	1.....	INCLUDES ITEMS W/\$
9#	470469010	CYLINDER END	1	
12#	470469000	PLUG, PUMP	1	
13#	470910010	BREATHER ASSY.....	1.....	INCLUDES ITEMS W/%
15#	470468980	CONTROL ARM	1	
16#	470468970	BUSH, PUMP	2	
18#	470468960	CONTROL SHAFT, PUMP	1	
19#	470468950	STOPPER, PUMP	2	
20#	470468940	PIM 7X18, PUMP	1	
27#	040300627	BEARING	1	
28#	025408035	SPRING PIN 8X35	1	
31#	505015380	PLUG PT1/4	2	
32#	050200360	O-RING P-36	3	
33#\$	050200240	O-RING P-24	1	
35#	050210200	O-RING P-20-1B	2	
36#	050100250	O-RING G-25	2	
37#%	050200180	O-RING P-18	1	

# NAMEPLATE AND DECALS ASSY.

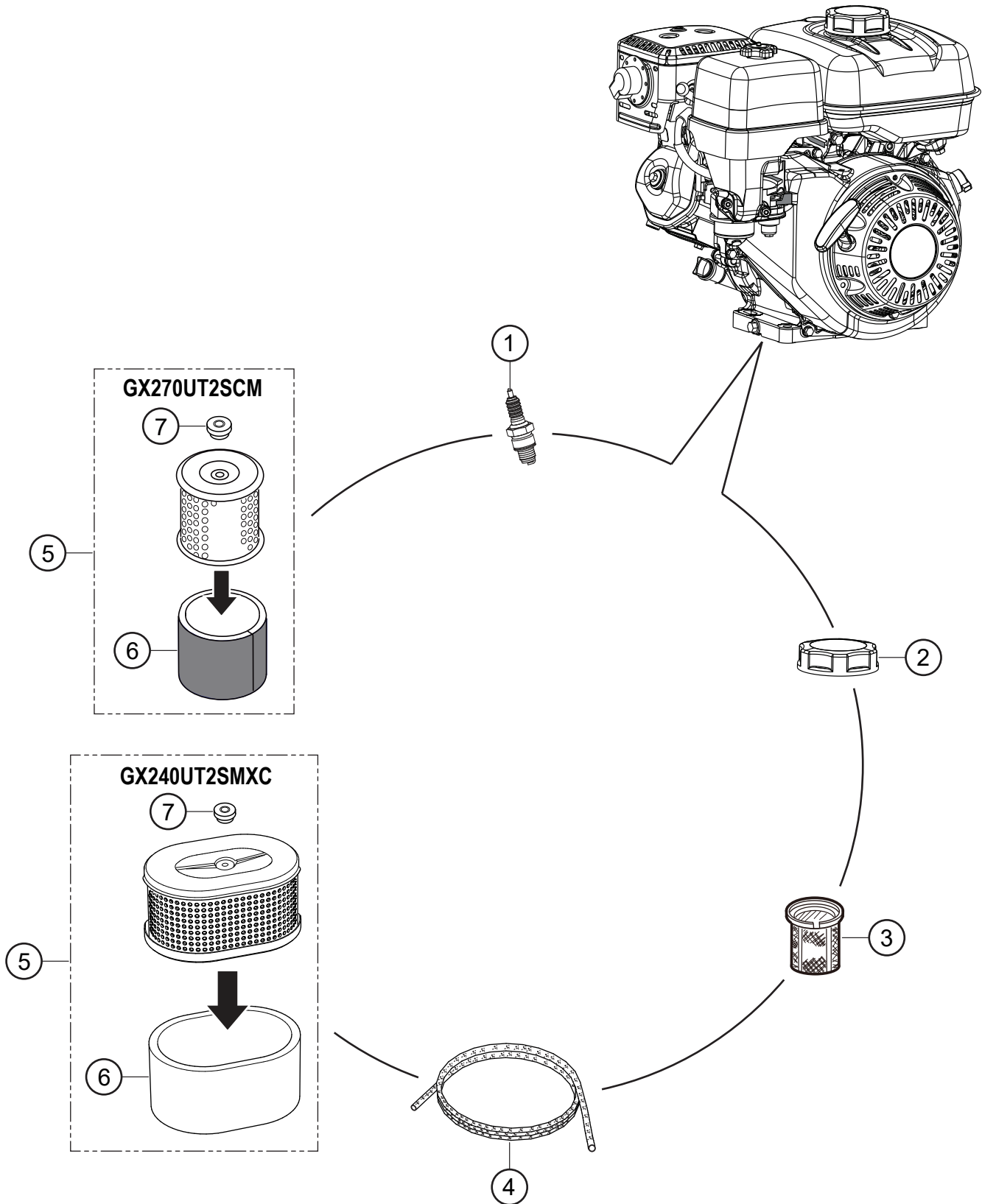


## NAMEPLATE AND DECALS ASSY.

---

<u>NO.</u>	<u>PART NO.</u>	<u>PART NAME</u>	<u>QTY.</u>	<u>REMARKS</u>
1	920204580	DECAL: FULL THROTTLE	1	
2	920203330	EAR PROTECTION LABEL	1	
3	920211060	DECAL: CAUTION (LEVER)	1	
4	920211090	DECAL: SHELL TELLUS OIL 32	1	
5	920201950	DECAL: OIL SAE 10W-30	1	
8	920214100	DECAL: E/G FIRE WARNING	1	
12	920217130	DECAL: MIKASA MARK (W) 200L	2	
13	920217110	DECAL: MIKASA MARK 35X70	2	
14	920220220	DECAL: MQ MARK 72X57	1	
15	920218390	DECAL: CAUTION	1	
16	920220140	DECAL: V-BELT HDPF-5380	1	
17	920218140	DECAL: E/G RPM 3400	1	
18	920900090	DECAL: SET/MVC-MCD/EXP, EU	1	
19	920220080	DECAL: MODEL(R, OR)	2	
20	920220090	DECAL: MODEL(L, OR)	1	
21	920211690	DECAL: LEVER OPERATION	1	

# ENGINE SERVICE PARTS



## ENGINE SERVICE PARTS

<u>NO.</u>	<u>PART NO.</u>	<u>PART NAME</u>	<u>QTY.</u>	<u>REMARKS</u>
1◆	9807956855	SPARK PLUG	1	
1◇	9807956846	SPARK PLUG	1	
2	17620Z4H900	CAP, FUEL TANK	1	
3	17672Z4H000	FILTER, FUEL TANK	1	
4	28462ZE2W11	ROPE, RECOIL STARTER	1	
5◆	17210ZE3505	ELEMENT, AIR CLEANER.....	1	INCLUDES ITEMS W/#
5◇	17210Z1C781	ELEMENT, AIR CLEANER.....	1	INCLUDES ITEMS W/%
6#	17218ZE3505	FILTER, OUTER	1	
6%	17218Z1C780	FILTER, OUTER	1	
7#%	17232891000	GROMMET, AIR CLEANER	1	

### NOTICE

- ◆ GX240UT2SMXC
- ◇ GX270UT2SCM

# PARTS MANUAL

## HERE'S HOW TO GET HELP

PLEASE HAVE THE MODEL AND SERIAL  
NUMBER ON-HAND WHEN CALLING

### UNITED STATES

#### *Multiquip Inc.*

(310) 537- 3700  
6141 Katella Avenue Suite 200  
Cypress, CA 90630  
E-MAIL: [mq@multiquip.com](mailto:mq@multiquip.com)  
WEBSITE: [www.multiquip.com](http://www.multiquip.com)

---

### CANADA

#### *Multiquip*

(450) 625-2244  
4110 Industriel Boul.  
Laval, Quebec, Canada H7L 6V3  
E-MAIL: [infocanada@multiquip.com](mailto:infocanada@multiquip.com)

### UNITED KINGDOM

#### *Multiquip (UK) Limited Head Office*

0161 339 2223  
Unit 2, Northpoint Industrial Estate, Globe Lane,  
Dukinfield, Cheshire SK16 4UJ  
E-MAIL: [sales@multiquip.co.uk](mailto:sales@multiquip.co.uk)

© COPYRIGHT 2026, MULTIQUIP INC.

Multiquip Inc. and the MQ logo are registered trademarks of Multiquip Inc. and may not be used, reproduced, or altered without written permission. All other trademarks are the property of their respective owners and used with permission.

This manual MUST accompany the equipment at all times. This manual is considered a permanent part of the equipment and should remain with the unit if resold.

DISCLAIMER: Product features, descriptions, and specifications are based on published information at the time of publication and are subject to change at any time without notice. Multiquip Inc. and its affiliates reserve the right to change specifications, features, design, and descriptions of products at any time without notice.

