

# PARTS MANUAL



*Mikasa* **SERIES**  
**MODEL MVHeR60**  
**REVERSIBLE PLATE COMPACTOR**  
**(HONDA GXE2.0H DC POWER UNIT**  
**HONDA DP72104Z BATTERY)**

Revision #1 (02/11/22)

To find the latest revision of this publication or associated operation manual, visit our website at: [www.multiquip.com](http://www.multiquip.com)



**THIS MANUAL MUST ACCOMPANY THE EQUIPMENT AT ALL TIMES.**

## **MVHeR60 Plate Compactor**

|  |   |
|--|---|
| Explanation Of Code In Remarks Column..... | 4 |
| Suggested Spare Parts .....                | 5 |

### **Component Drawings**

|  |       |
|--|-------|
| Nameplate And Decals Assembly .....    | 6–7   |
| Control Handle Assembly .....          | 8–9   |
| Body Assembly.....                     | 10–11 |
| Vibrator Assembly .....                | 12–13 |
| Vibrating Plate Assembly.....          | 14–15 |
| Electric Motor Assembly .....          | 16–17 |
| Battery Charger Assembly.....          | 18–19 |
| Water Tank Assembly (Option) .....     | 20–21 |
| Transport Wheel Assembly (Option)..... | 22–23 |

#### **NOTICE**

Specifications and part numbers are subject to change without notice.



# EXPLANATION OF CODE IN REMARKS COLUMN

The following section explains the different symbols and remarks used in the Parts section of this manual. Use the help numbers found on the back page of the manual if there are any questions.

**NOTICE**

The contents and part numbers listed in the parts section are subject to change **without notice**. Multiquip does not guarantee the availability of the parts listed.

## SAMPLE PARTS LIST

| NO. | PART NO. | PART NAME            | QTY. | REMARKS             |
|-----|----------|----------------------|------|---------------------|
| 1   | 12345    | BOLT .....           | 1    | INCLUDES ITEMS W/%  |
| 2%  |          | WASHER, 1/4 IN. .... |      | NOT SOLD SEPARATELY |
| 2%  | 12347    | WASHER, 3/8 IN. ...  | 1    | MQ-45T ONLY         |
| 3   | 12348    | HOSE .....           | A/R  | MAKE LOCALLY        |
| 4   | 12349    | BEARING .....        | 1    | S/N 2345B AND ABOVE |

## NO. Column

**Unique Symbols** — All items with same unique symbol (@, #, +, %, or >) in the number column belong to the same assembly or kit, which is indicated by a note in the “Remarks” column.

**Duplicate Item Numbers** — Duplicate numbers indicate multiple part numbers, which are in effect for the same general item, such as different size saw blade guards in use or a part that has been updated on newer versions of the same machine.

**NOTICE**

When ordering a part that has more than one item number listed, check the remarks column for help in determining the proper part to order.

## PART NO. Column

**Numbers Used** — Part numbers can be indicated by a number, a blank entry, or TBD.

TBD (To Be Determined) is generally used to show a part that has not been assigned a formal part number at the time of publication.

A blank entry generally indicates that the item is not sold separately or is not sold by Multiquip. Other entries will be clarified in the “Remarks” Column.

## QTY. Column

**Numbers Used** — Item quantity can be indicated by a number, a blank entry, or A/R.

A/R (As Required) is generally used for hoses or other parts that are sold in bulk and cut to length.

A blank entry generally indicates that the item is not sold separately. Other entries will be clarified in the “Remarks” Column.

## REMARKS Column

Some of the most common notes found in the “Remarks” Column are listed below. Other additional notes needed to describe the item can also be shown.

**Assembly/Kit** — All items on the parts list with the same unique symbol will be included when this item is purchased.

Indicated by:

“INCLUDES ITEMS W/(unique symbol)”

**Serial Number Break** — Used to list an effective serial number range where a particular part is used.

Indicated by:

“S/N XXXXX AND BELOW”

“S/N XXXX AND ABOVE”

“S/N XXXX TO S/N XXX”

**Specific Model Number Use** — Indicates that the part is used only with the specific model number or model number variant listed. It can also be used to show a part is NOT used on a specific model or model number variant.

Indicated by:

“XXXXX ONLY”

“NOT USED ON XXXX”

**“Make/Obtain Locally”** — Indicates that the part can be purchased at any hardware shop or made out of available items. Examples include battery cables, shims, and certain washers and nuts.

**“Not Sold Separately”** — Indicates that an item cannot be purchased as a separate item and is either part of an assembly/kit that can be purchased, or is not available for sale through Multiquip.

## SUGGESTED SPARE PARTS

---

### MVHeR60 PLATE COMPACTOR WITH HONDA GXE2.0H ELECTRIC MOTOR

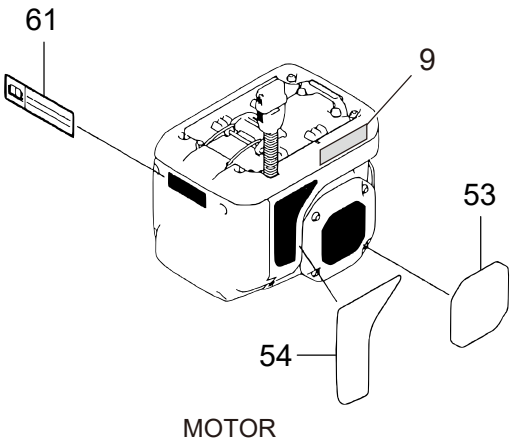
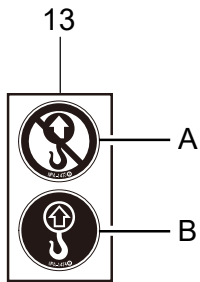
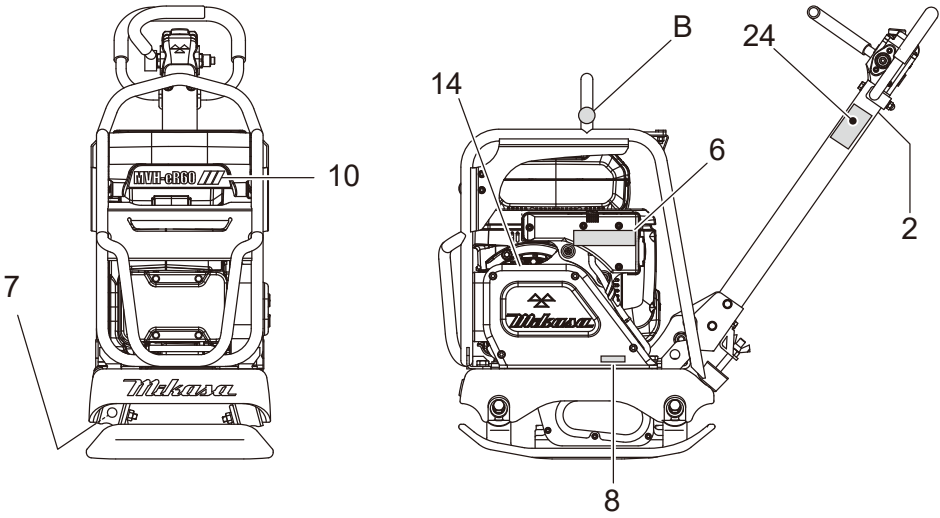
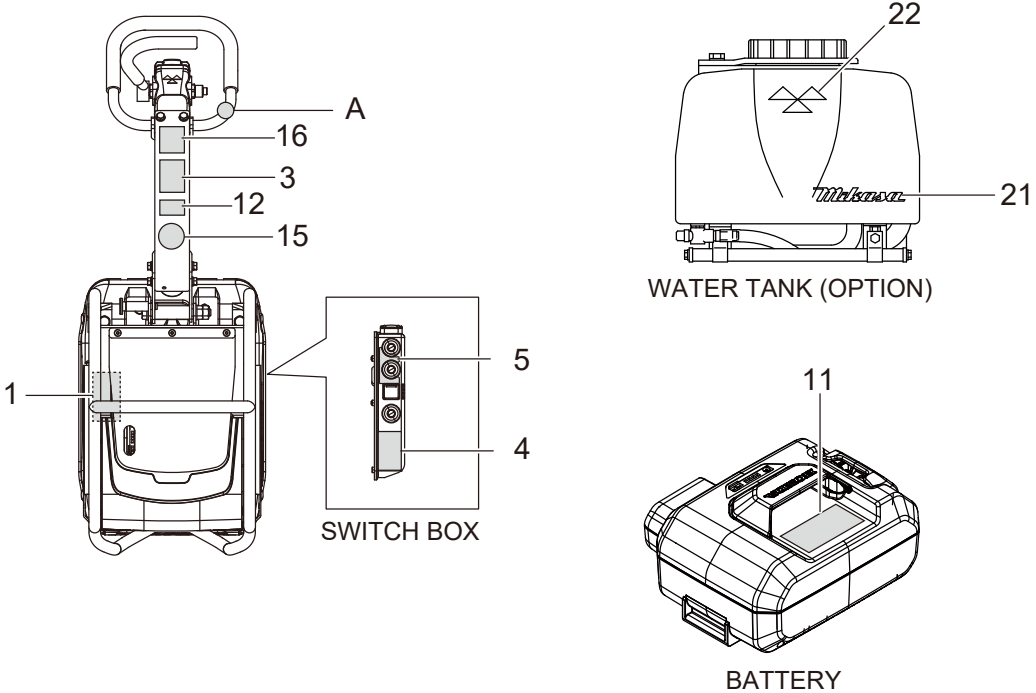
1 to 3 units

| Qty.   | P/N              | Description                        |
|--------|------------------|------------------------------------|
| 1..... | 070100312.....   | V-BELT                             |
| 2..... | 939010420.....   | SHOCK ABSORBER                     |
| 1..... | 421220330.....   | SWITCH BOX                         |
| 2..... | 1N4218A0003..... | LAMP ASSEMBLY, IND (ORANGE)        |
| 2..... | 1N4228A0003..... | LAMP ASSEMBLY, IND (RED)           |
| 2..... | 1N4238A0003..... | LAMP ASSEMBLY, IND (GREEN)         |
| 1..... | MCB7210.....     | BATTERY PACK, LITHIUM-ION 72V 10AH |

#### NOTICE

Part numbers on this Suggested Spare Parts list may supersede/replace the part numbers shown in the following parts lists.

# NAMEPLATE AND DECALS ASSY.

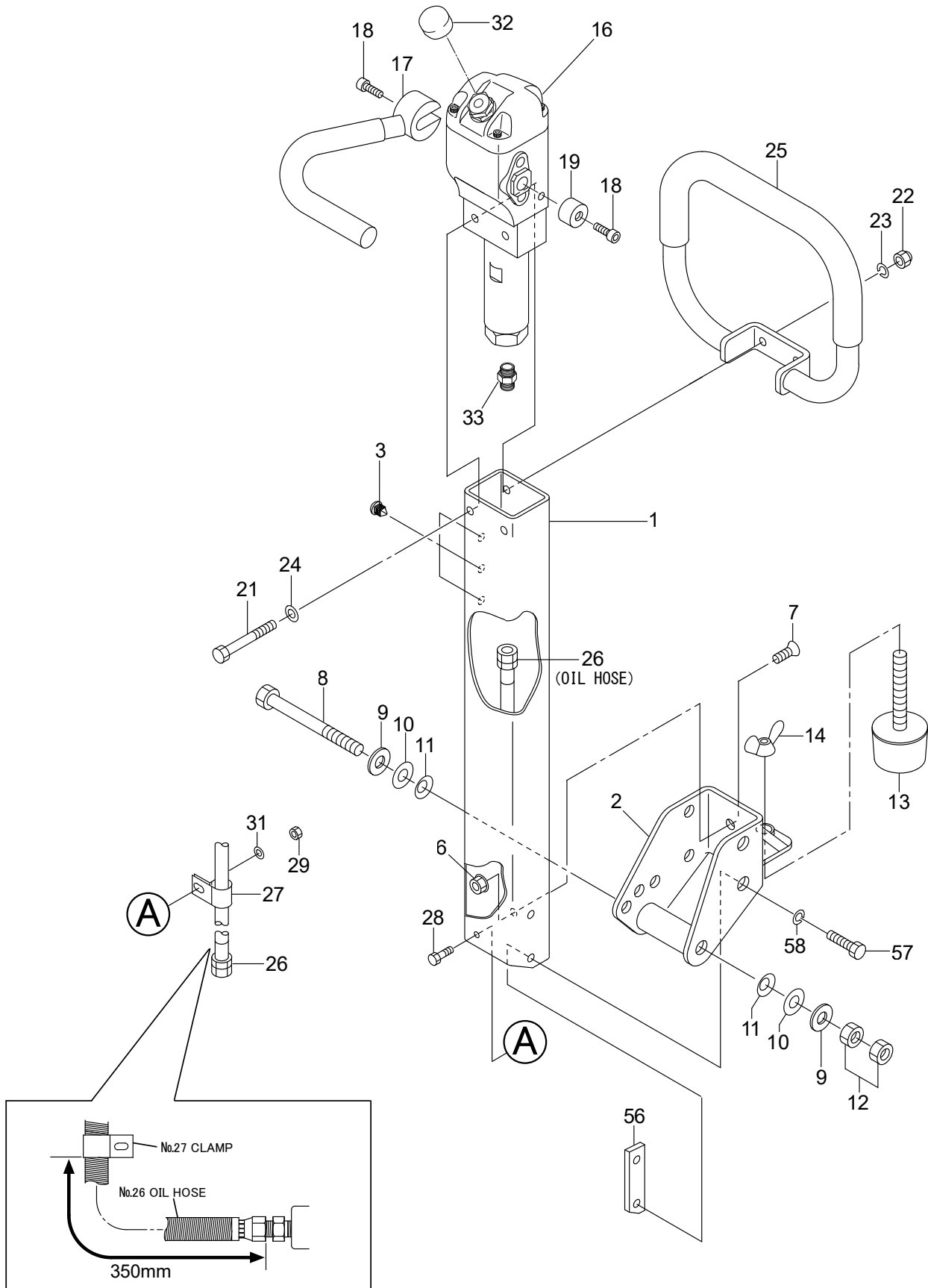


## NAMEPLATE AND DECALS ASSY.

---

| <u>NO.</u> | <u>PART NO.</u> | <u>PART NAME</u>              | <u>QTY.</u> | <u>REMARKS</u> |
|------------|-----------------|-------------------------------|-------------|----------------|
| 1          | 920224370       | DECAL; NAMEPLATE /eR60 /MQ    | 1           |                |
| 2          | 920211090       | DECAL; SHELL TELLUS OIL 32    | 1           |                |
| 3          | 920224720       | DECAL; COMBI. CAUTION /eR60   | 1           |                |
| 4          | 920224360       | DECAL; START-STOP/eGX         | 1           |                |
| 5          | 920224390       | DECAL; LED/e60                | 1           |                |
| 6          | 920224690       | DECAL; EARTH SMART            | 1           |                |
| 7          | 920201950       | DECAL; OIL SAE 10W-30         | 1           |                |
| 8          | 920207590       | DECAL; V-BELT (RPF-3310)      | 1           |                |
| 9          | 920224760       | DECAL; CAUTION RAINY AND WASH | 1           |                |
| 10         | 920224430       | DECAL; MVH-eR60 /ORANGE       | 1           |                |
| 11         | 1D1438B0A01     | LABEL; CAUTION(A) EXP/eGX     | 1           |                |
| 12         | 920224780       | DECAL; NEUTRAL OPERATION/EN   | 1           |                |
| 13         | 920900180       | DECAL; SET TWO KINDS          | 1           |                |
| 14         | 920201580       | DECAL; MQ MARK 71X55          | 1           |                |
| 15         | 920224750       | DECAL; MQ 3 YEAR WARRANTY     | 1           |                |
| 16         | 920210330       | DECAL; EC NOISE REQ. LWA105   | 1           |                |
| 21         | 920113430       | DECAL; MIKASA MARK 125MM      | 1           |                |
| 22         | 920108850       | DECAL; M-MARK Y-40X80         | 1           |                |
| 24         | 920222240       | DECAL; PROPOSITION 65         | 1           |                |
| 53         | 875218A0600     | MARK; EMBLEM                  | 1           |                |
| 54         | 875238A0600     | MARK; ELECTRIC PW             | 1           |                |
| 61         | 875168A0620     | MARK; OPER. CAUTION (E)       | 1           |                |

# CONTROL HANDLE ASSY.

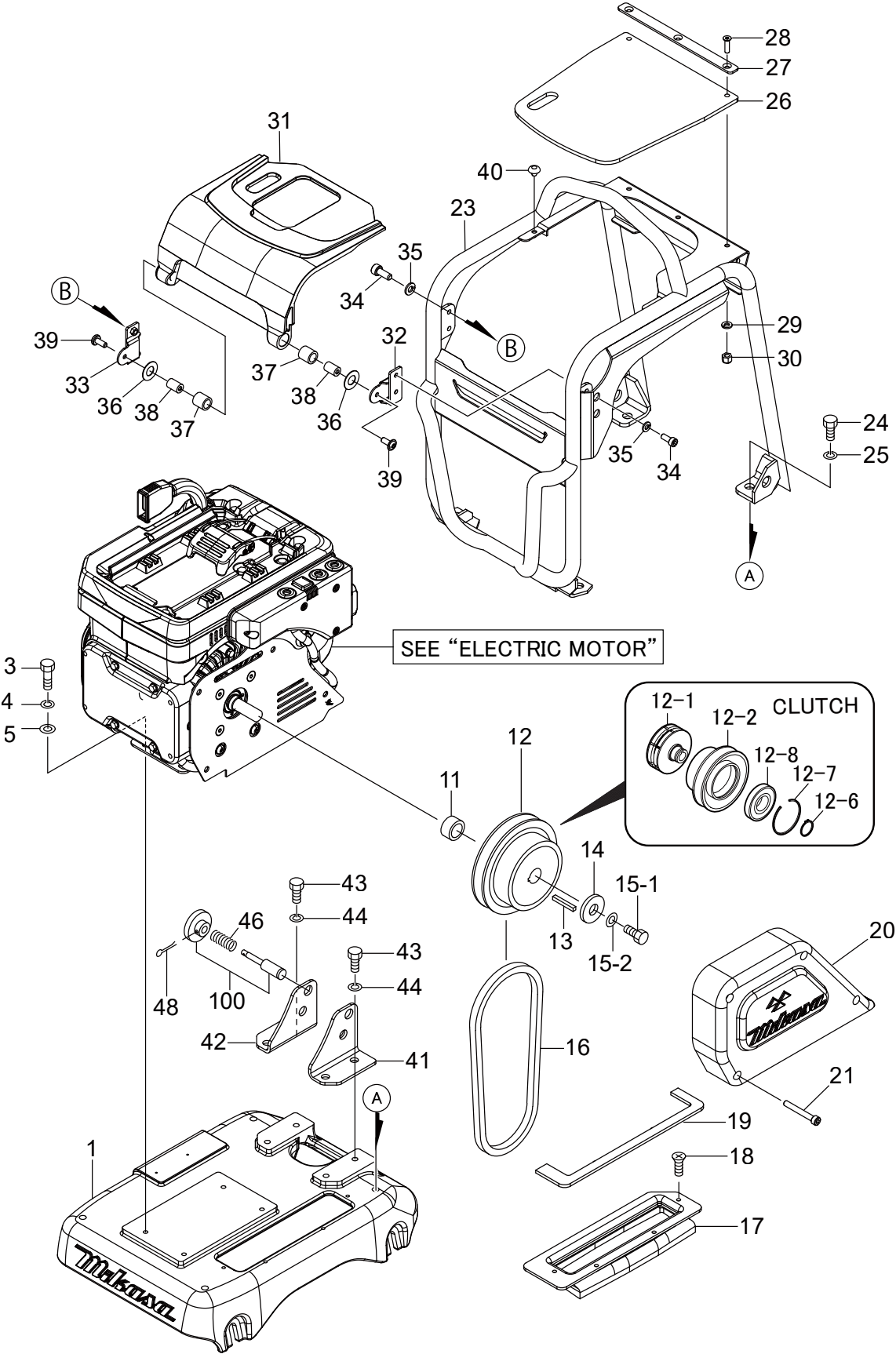




## CONTROL HANDLE ASSY.

| <u>NO.</u> | <u>PART NO.</u> | <u>PART NAME</u>             | <u>QTY.</u> | <u>REMARKS</u>         |
|------------|-----------------|------------------------------|-------------|------------------------|
| 1          | 463342849OR     | HANDLE (ORANGE)              | 1           |                        |
| 2          | 473357350OR     | BRACKET, HANDLE (ORANGE)     | 1           |                        |
| 3          | 953409110       | BRUSH CLIP                   | 3           |                        |
| 6          | 022610808       | FLANGE NUT, M8               | 1           |                        |
| 7          | 009120408       | SUNK HEAD BOLT, 8X20         | 1           |                        |
| 8          | 001221464       | BOLT, 14X120                 | 1           |                        |
| 9          | 031114260       | WASHER, FLAT M14             | 2           |                        |
| 10         | 458450660       | WASHER                       | 2           |                        |
| 11         | 032114250       | CONICAL SPRING WASHER, M14   | 2           |                        |
| 12         | 020314110       | NUT, M14                     | 2           |                        |
| 13         | 939010220       | SHOCK ABSORBER, STOPPER      | 1           |                        |
| 14         | 022910220       | WING NUT, M12                | 1           |                        |
| 16         | 463219840       | HAND PUMP ASSEMBLY           | 1           |                        |
| 17         | 463342130OR     | TRAVEL LEVER (ORANGE)        | 1           |                        |
| 18         | 014208020       | SOCKET HEAD BOLT, 8X20 ..... | 2.....      | REPLACES P/N 001520820 |
| 19         | 458451420       | COLLAR                       | 1           |                        |
| 21         | 001220854       | BOLT, 8X70                   | 2           |                        |
| 22         | 022130806       | CAP NUT, M8                  | 2           |                        |
| 23         | 030208200       | WASHER, LOCK M8              | 2           |                        |
| 24         | 0401450080      | WASHER, FLAT M8 .....        | 2.....      | REPLACES P/N 031108160 |
| 25         | 463342159OR     | HANDLE GRIP (ORANGE)         | 1           |                        |
| 26         | 954002250       | OIL HOSE                     | 1           |                        |
| 27         | 954404230       | CLAMP                        | 1           |                        |
| 28         | 001220620       | BOLT, 6X20                   | 1           |                        |
| 29         | 020106050       | NUT, M6 .....                | 1.....      | REPLACES P/N 020306050 |
| 31         | 952404470       | WASHER, FLAT M6 .....        | 1.....      | REPLACES P/N 031106100 |
| 32         | 458451630       | BREATHER CAP                 | 1           |                        |
| 33         | 954003150       | MALE CONNECTOR, O-RING 1/4   | 1           |                        |
| 56         | 463462920       | HANDLE MOUNT NUT             | 2           |                        |
| 57         | 001220820       | BOLT, 8X20                   | 4           |                        |
| 58         | 030208200       | WASHER, LOCK M8              | 4           |                        |

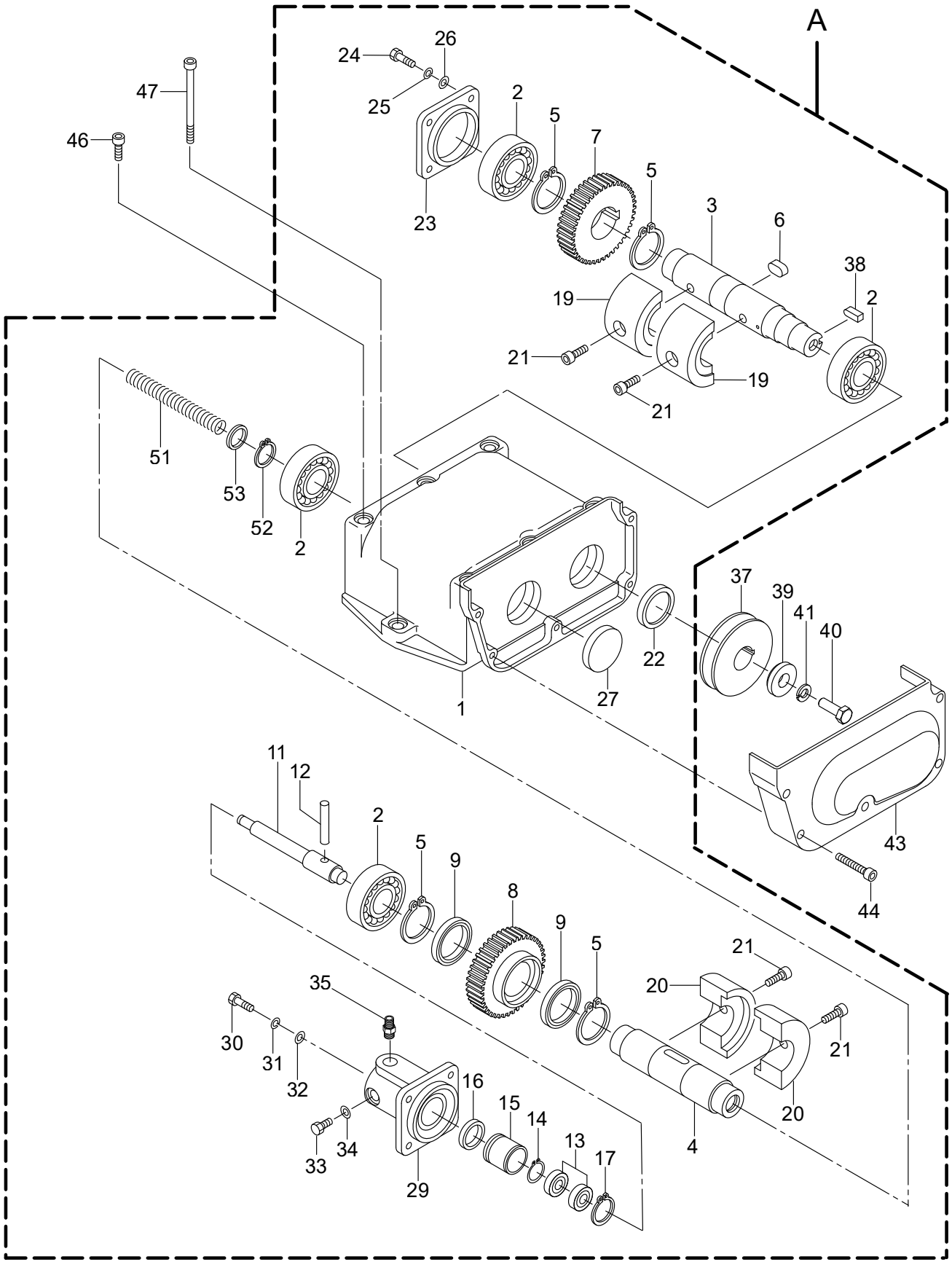
# BODY ASSY.



## BODY ASSY.

| <u>NO.</u> | <u>PART NO.</u> | <u>PART NAME</u>         | <u>QTY.</u> | <u>REMARKS</u>         |
|------------|-----------------|--------------------------|-------------|------------------------|
| 1          | 473122960OR     | BASE (ORANGE)            | 1           |                        |
| 3          | 011208025       | BOLT, 8X25.....          | 4           | REPLACES P/N 001220825 |
| 4          | 030208200       | WASHER, LOCK M8          | 4           |                        |
| 5          | 0401450080      | WASHER, FLAT M8.....     | 4           | REPLACES P/N 031108160 |
| 11         | 473473700       | CLUTCH SPACER, 18X34X5   | 1           |                        |
| 12         | 460446780       | CLUTCH ASSEMBLY          | 1           |                        |
| 12-1       | 943920080       | CLUTCH SHAFT             | 1           |                        |
| 12-2       | 941010400       | CLUTCH PULLEY            | 1           |                        |
| 12-6       | 080200300       | SNAP RING                | 1           |                        |
| 12-7       | 080600550       | CLIP                     | 1           |                        |
| 12-8       | 042006006       | BEARING.....             | 1           | REPLACES P/N 046006006 |
| 13         | 0320050150      | KEY, 5X5X35.....         | 1           | REPLACES P/N 951400100 |
| 14         | 952400130       | WASHER                   | 1           |                        |
| 15-1       | 011208025       | BOLT, 8X25.....          | 1           | REPLACES P/N 001220825 |
| 15-2       | 030208200       | WASHER, LOCK M8          | 1           |                        |
| 16         | 070100312       | V-BELT                   | 1           |                        |
| 17         | 463216120       | DUST COVER               | 1           |                        |
| 18         | 092006010       | FLAT HEAD SCREW, 6X10    | 4           |                        |
| 19         | 473357290       | SPONGE, DUST COVER       | 1           |                        |
| 20         | 473122970       | BELT COVER               | 1           |                        |
| 21         | 009110118       | SOCKET HEAD BOLT, 8X60   | 4           |                        |
| 23         | 473122980       | GUARD FRAME              | 1           |                        |
| 24         | 012012030       | BOLT, 12X30.....         | 4           | REPLACES P/N 001221230 |
| 25         | 030212300       | WASHER, LOCK M12         | 4           |                        |
| 26         | 473473650       | RUBBER COVER             | 1           |                        |
| 27         | 473473660       | PLATE, RUBBER COVER      | 1           |                        |
| 28         | 009120414       | SUNK HEAD BOLT, 6X20     | 3           |                        |
| 29         | 030206150       | WASHER, LOCK M6          | 3           |                        |
| 30         | 022710607       | NYLON NUT, M6            | 3           |                        |
| 31         | 473122990       | TOP COVER                | 1           |                        |
| 32         | 473357300       | TOP COVER HINGE (L)      | 1           |                        |
| 33         | 473357310       | TOP COVER HINGE (R)      | 1           |                        |
| 34         | 009110060       | SOCKET HEAD BOLT, 6X15   | 4           |                        |
| 35         | 030206150       | WASHER, LOCK M6          | 4           |                        |
| 36         | 952410640       | WASHER, 15X30X1.0        | 2           |                        |
| 37         | 952410650       | RUBBER BUSHING, 14X20X20 | 2           |                        |
| 38         | 473473670       | HINGE PIN, 14            | 2           |                        |
| 39         | 009110117       | SOCKET HEAD SCREW, 6X15  | 2           |                        |
| 40         | 953410660       | RUBBER CUSHION, 14       | 2           |                        |
| 41         | 473357320       | HANDLE STAY (L)          | 1           |                        |
| 42         | 473357330       | HANDLE STAY (R)          | 1           |                        |
| 43         | 012010030       | BOLT, 10X30.....         | 4           | REPLACES P/N 001221030 |
| 44         | 030210250       | WASHER, LOCK M10         | 4           |                        |
| 46         | 458450880       | SPRING, 1.2-10-29        | 1           |                        |
| 48         | 025402516       | PIN, SPRING 2.5X16       | 1           |                        |
| 100        | 458910030       | STOPPER AND GRIP SET     | 1           |                        |

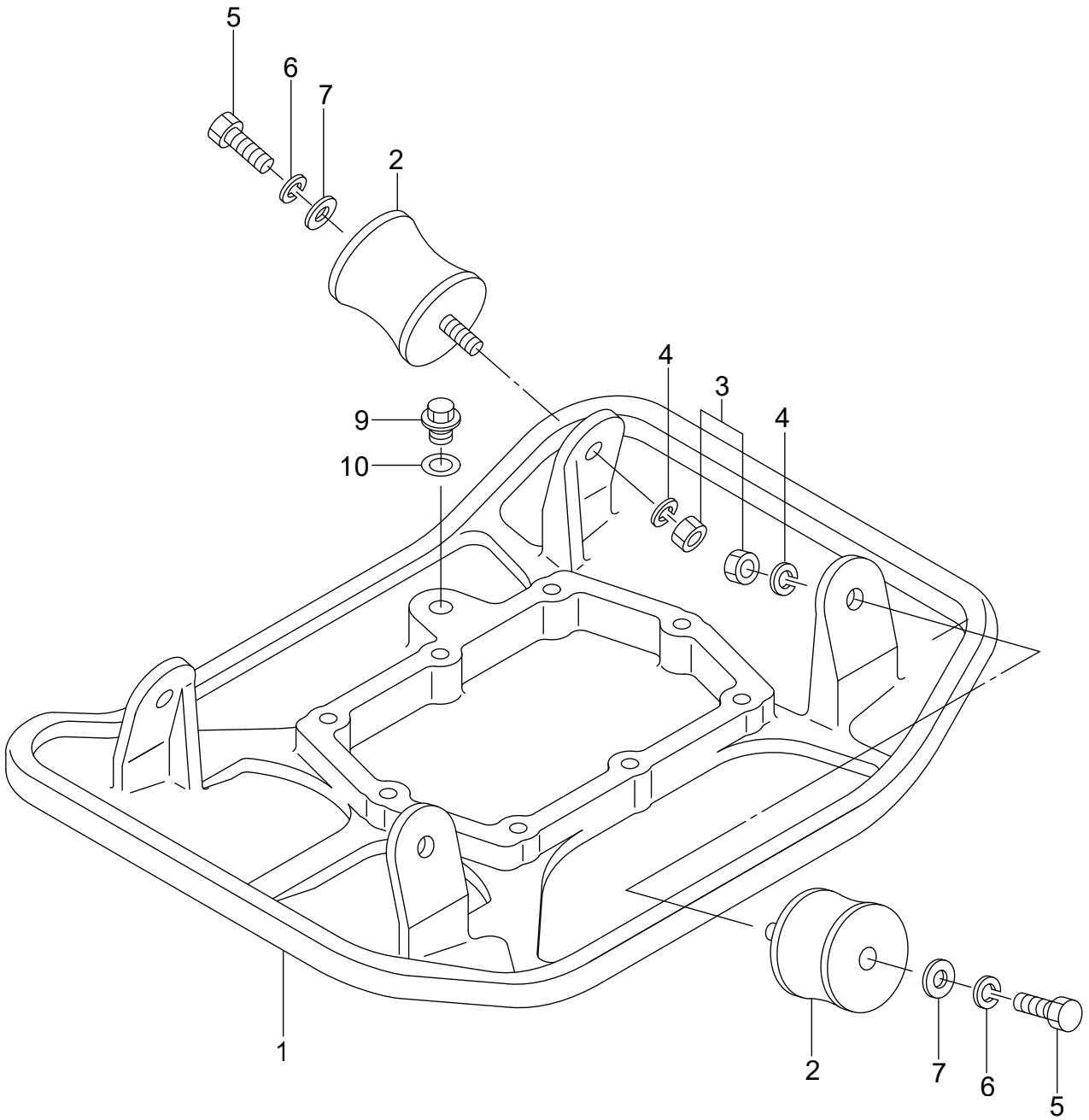
# VIBRATOR ASSY.



## VIBRATOR ASSY.

| <u>NO.</u> | <u>PART NO.</u> | <u>PART NAME</u>         | <u>QTY.</u> | <u>REMARKS</u>         |
|------------|-----------------|--------------------------|-------------|------------------------|
| A          | 473910010       | VIBRATOR ASSEMBLY .....  | 1.....      | INCLUDES ITEMS W/#     |
| 1#         | 463117150       | VIBRATING CASE           | 1           |                        |
| 2#         | 040406206       | BEARING                  | 4           |                        |
| 3#         | 463342040       | ROTARY SHAFT, DRIVE      | 1           |                        |
| 4#         | 463342050       | ROTARY SHAFT, DRIVEN     | 1           |                        |
| 5#         | 080200350       | STOP RING, S-35          | 4           |                        |
| 6#         | 951405460       | KEY, 10X8X19             | 1           |                        |
| 7#         | 463342060       | GEAR, DRIVE              | 1           |                        |
| 8#         | 463342070       | GEAR, DRIVEN             | 1           |                        |
| 9#         | 040306807       | BEARING                  | 2           |                        |
| 11#        | 463342080       | PISTON ROD               | 1           |                        |
| 12#        | 025508045       | PIN, 8X45                | 1           |                        |
| 13#        | 042006000       | BEARING .....            | 2.....      | REPLACES P/N 042506000 |
| 14#        | 0080000010      | STOP RING, S-10.....     | 1.....      | REPLACES P/N 080200100 |
| 15#        | 455435051       | PISTON, 22.4D            | 1           |                        |
| 16#        | 455010070       | PACKING                  | 1           |                        |
| 17#        | 080100260       | STOP RING, R-26          | 1           |                        |
| 19#        | 473474570       | ECCENT. ROTATOR, DRIVE   | 2           |                        |
| 20#        | 473474580       | ECCENT. ROTATOR, DRIVEN  | 2           |                        |
| 21#        | 009120304       | SOCKET HEAD BOLT, 10X25  | 4           |                        |
| 22#        | 060202040       | OIL SEAL                 | 1           |                        |
| 23#        | 463455930       | BEARING COVER            | 1           |                        |
| 24#        | 001220820       | BOLT, 8X20               | 4           |                        |
| 25#        | 030208200       | WASHER, LOCK M8          | 4           |                        |
| 26#        | 0401450080      | WASHER, FLAT M8.....     | 4.....      | REPLACES P/N 031108160 |
| 27#        | 953405580       | SEAL CAP                 | 1           |                        |
| 29#        | 463349940       | CYLINDER, SLIPPAGE TYPE  | 1           |                        |
| 30#        | 001220820       | BOLT, 8X20               | 4           |                        |
| 31#        | 030208200       | WASHER, LOCK M8          | 4           |                        |
| 32#        | 0401450080      | WASHER, FLAT M8.....     | 4.....      | REPLACES P/N 031108160 |
| 33#        | 011008015       | BOLT, 8X12 .....         | 1.....      | REPLACES P/N 001220812 |
| 34#        | 953404600       | COPPER PACKING, 8X16X2   | 1           |                        |
| 35#        | 954010020       | CONNECTOR                | 1           |                        |
| 37#        | 473357340       | PULLEY                   | 1           |                        |
| 38#        | 951405240       | KEY, 7X7X19              | 1           |                        |
| 39#        | 473473690       | WASHER                   | 1           |                        |
| 40#        | 011208025       | BOLT, 8X25 .....         | 1.....      | REPLACES P/N 001220825 |
| 41#        | 030208200       | WASHER, LOCK M8          | 1           |                        |
| 43#        | 463216110       | BELT COVER, LOWER        | 1           |                        |
| 44#        | 001520640       | SOCKET HEAD BOLT, 6X40   | 5           |                        |
| 46         | 001521030       | SOCKET HEAD BOLT, 10X30  | 2           |                        |
| 47         | 001521060       | SOCKET HEAD BOLT, 10X100 | 6           |                        |
| 51#        | 463471200       | SPRING, 1.2D             | 1           |                        |
| 52#        | 080100190       | STOP RING, R-19          | 1           |                        |
| 53#        | 0401450080      | WASHER, FLAT M8.....     | 1.....      | REPLACES P/N 031108160 |

# VIBRATING PLATE ASSY.

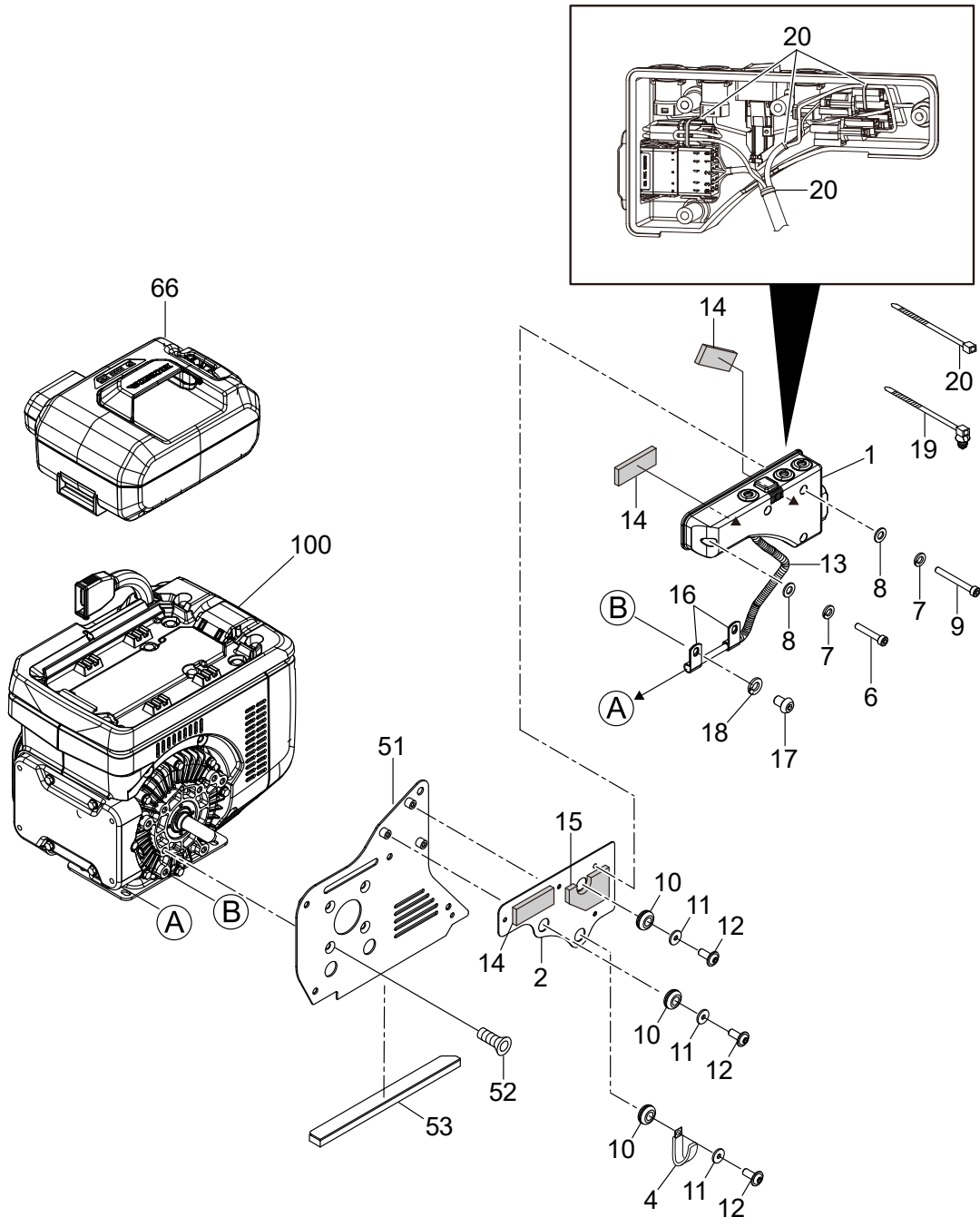


**VIBRATING PLATE ASSY.**

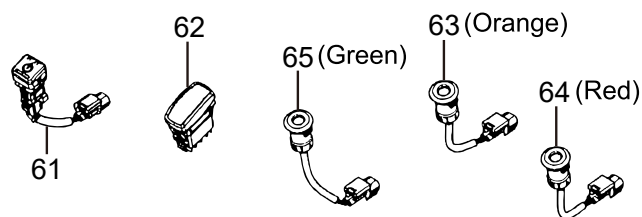
---

| <u>NO.</u> | <u>PART NO.</u> | <u>PART NAME</u>    | <u>QTY.</u> | <u>REMARKS</u>         |
|------------|-----------------|---------------------|-------------|------------------------|
| 1          | 463117110       | VIBRATING PLATE     | 1           |                        |
| 2          | 939010420       | SHOCK ABSORBER      | 4           |                        |
| 3          | 020310080       | NUT, M10            | 4           |                        |
| 4          | 030210250       | WASHER, LOCK M10    | 4           |                        |
| 5          | 012010030       | BOLT, 10X30.....    | 4.....      | REPLACES P/N 001221030 |
| 6          | 030210250       | WASHER, LOCK M10    | 4           |                        |
| 7          | 952401660       | WASHER              | 4           |                        |
| 9          | 460449160       | OIL GAUGE           | 1           |                        |
| 10         | 953405260       | COPPER PACKING, 1/4 | 1           |                        |

# ELECTRIC MOTOR ASSY.



## SWITCH AND LED



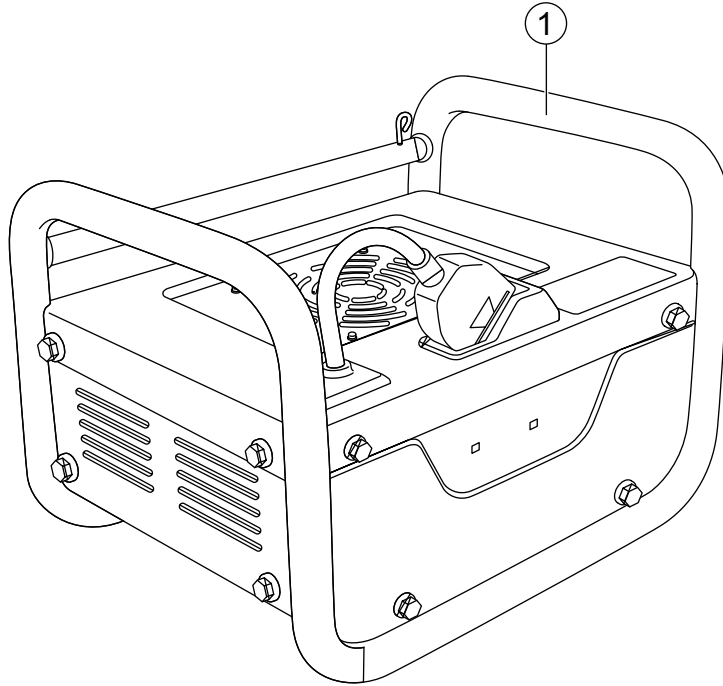


## ELECTRIC MOTOR ASSY.

| <u>NO.</u> | <u>PART NO.</u> | <u>PART NAME</u>                    | <u>QTY.</u> | <u>REMARKS</u>         |
|------------|-----------------|-------------------------------------|-------------|------------------------|
| 1          | 421220330       | SWITCH BOX                          | 1           |                        |
| 2          | 421357130       | SWITCH BOX PANEL                    | 1           |                        |
| 4          | 954410020       | CLAMP, D6.5XL95XT0.8                | 1           |                        |
| 6          | 001520530       | SOCKET HEAD BOLT, 5X30              | 1           |                        |
| 7          | 030205130       | WASHER, LOCK M5                     | 4           |                        |
| 8          | 58151           | WASHER, FLAT M5.....                | 4           | REPLACES P/N 031105080 |
| 9          | 001520545       | SOCKET HEAD BOLT, 5X45              | 3           |                        |
| 10         | 473473680       | GROMMET                             | 3           |                        |
| 11         | 952410670       | WASHER, 6.5X20X2.3                  | 3           |                        |
| 12         | 009110117       | SOCKET HEAD SCREW, 6X15             | 3           |                        |
| 13         | 959029802       | CORRUGATE TUBE, 10MM-250L           | 1           |                        |
| 14         | 421473430       | CUSHION, 30X80                      | 3           |                        |
| 15         | 421473440       | CUSHION, 55X85                      | 1           |                        |
| 16         | 959410810       | CLIP, 11 (M8)                       | 2           |                        |
| 17         | 009110103       | SOCKET HEAD SCREW, 8X12             | 2           |                        |
| 18         | 0401450080      | WASHER, FLAT M8.....                | 2           | REPLACES P/N 031108160 |
| 19         | 91541S0A003     | CLIP, HARNESS BAND                  | 1           |                        |
| 20         | 454010020       | CLAMP                               | 8           |                        |
| 51         | 473357270       | SWITCH BOX HOLDER                   | 1           |                        |
| 52         | 009120408       | SUNK HEAD, BOLT 8X20                | 4           |                        |
| 53         | 473357280       | SPONGE, INNER, DUST COVER           | 1           |                        |
| 61         | 1N3118A0003     | SWITCH ASSEMBLY, POWER              | 1           |                        |
| 62         | 1N3308A0003     | SWITCH ASSEMBLY, START              | 1           |                        |
| 63         | 1N4218A0003     | LAMP ASSEMBLY, IND (ORANGE)         | 1           |                        |
| 64         | 1N4228A0003     | LAMP ASSEMBLY, IND (RED)            | 1           |                        |
| 65         | 1N4238A0003     | LAMP ASSEMBLY, IND (GREEN)          | 1           |                        |
| 66         | MCB7210         | BATTERY PACK, LITHIUM-ION 72V 10AH  | 1           |                        |
| 100        | 912721601       | HONDA GXE2.0H ELEC. MOTOR (INTEGR.) | 1           |                        |

# BATTERY CHARGER ASSY.

---

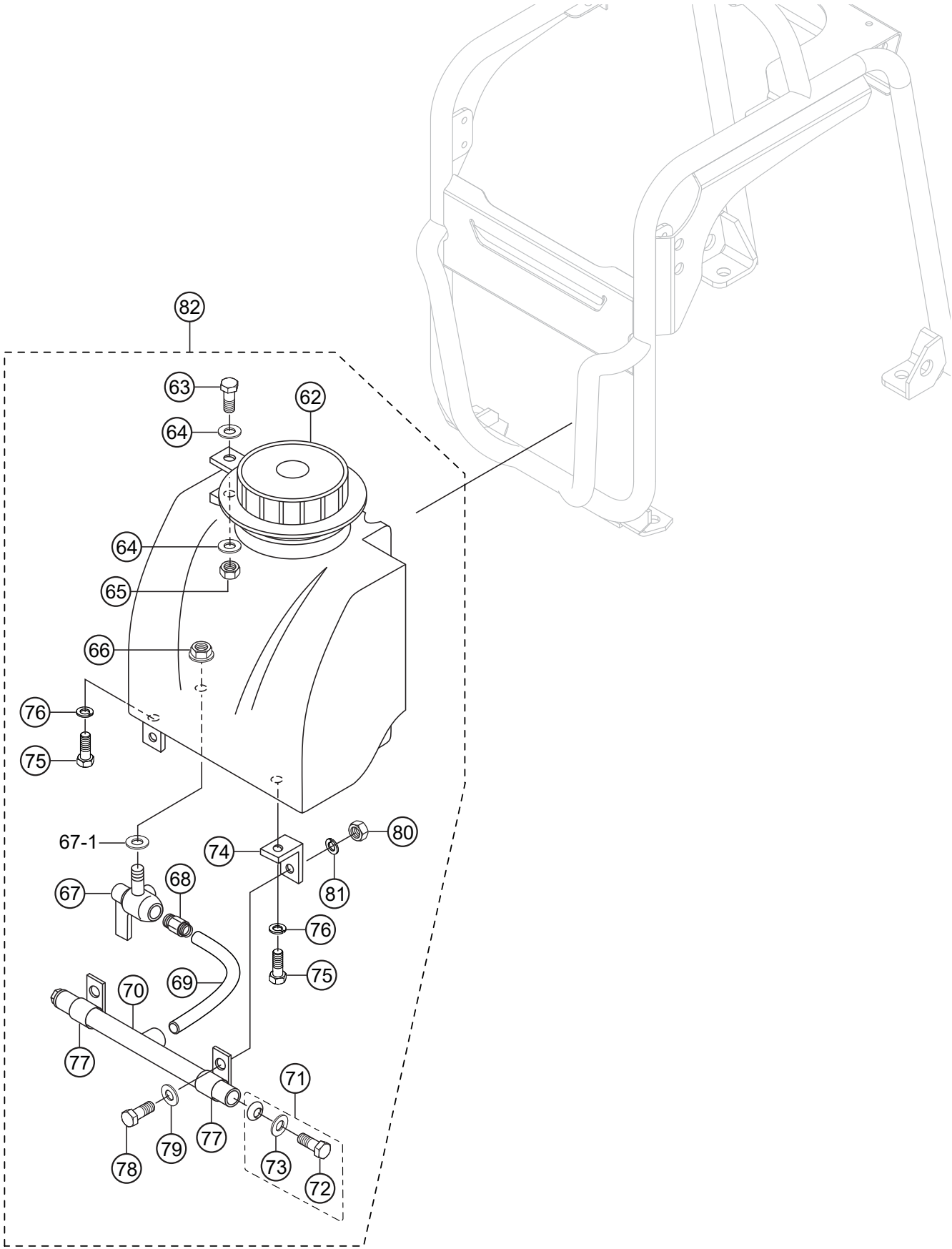


## BATTERY CHARGER ASSY.

---

| <u>NO.</u> | <u>PART NO.</u> | <u>PART NAME</u> | <u>QTY.</u> | <u>REMARKS</u> |
|------------|-----------------|------------------|-------------|----------------|
| 1          | MCB0190         | BATTERY CHARGER  | 1           |                |

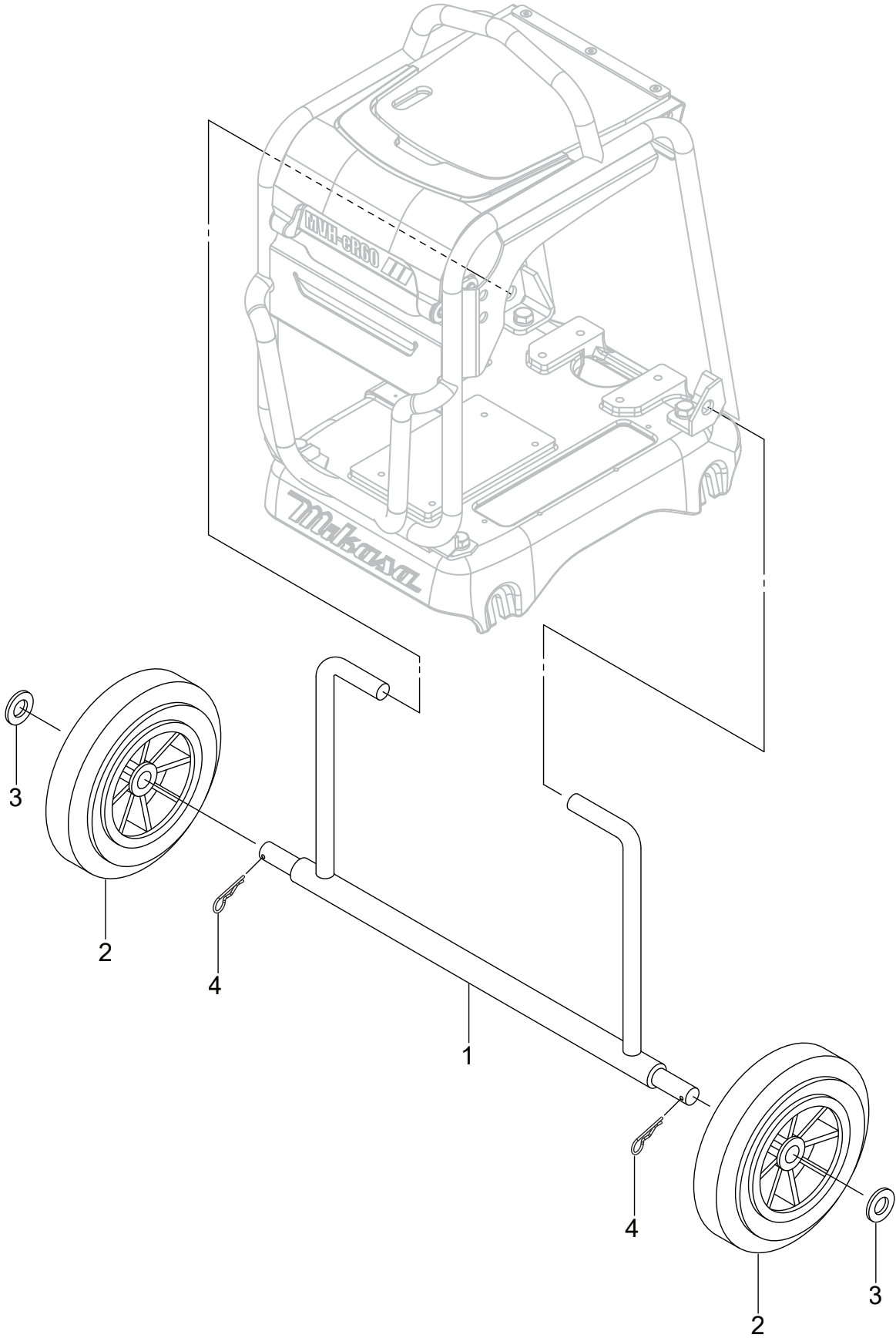
# WATER TANK ASSY. (OPTION)



## WATER TANK ASSY. (OPTION)

| <u>NO.</u> | <u>PART NO.</u> | <u>PART NAME</u>               | <u>QTY.</u> | <u>REMARKS</u>                                 |
|------------|-----------------|--------------------------------|-------------|--|
| 62#        | 954300343       | CAP, WATER TANK                | 1           |  |
| 63#        | 001241030       | BOLT, 10X30                    | 1           |  |
| 64#        | 033910160       | WASHER, FLAT M10               | 2           |  |
| 65#        | 022910270       | NUT, M10                       | 1           |  |
| 66#        | 022610808       | FLANGE NUT, M8                 | 1           |  |
| 67#        | 954407090       | WATER VALVE, ANGLE TYPE M8     | 1           |  |
| 67-1#      | 953407410       | PACKING, 8X15X2                | 1           |  |
| 68#        | 954405680       | CONNECTOR, 1/4X10              | 1           |  |
| 69#        | 463456580       | WATER HOSE                     | 1           |  |
| 70#        | 463910050       | SPRINKLING PIPE ASSEMBLY       | 1           |  |
| 71#        | 515910050       | CAP ASSEMBLY, WITH BOLT/WASHER | 2           | INCLUDES ITEMS W/\$                            |
| 72\$#      | 011206020       | BOLT, 6X20.....                | 2.....      | REPLACES P/N 001220620                         |
| 73\$#      | 952404470       | WASHER, FLAT M6.....           | 2.....      | REPLACES P/N 031106100                         |
| 74#        | 463456570       | STAY, L TYPE                   | 2           |  |
| 75#        | 011008015       | BOLT, 8X15.....                | 2.....      | REPLACES P/N 001220815                         |
| 76#        | 030208200       | WASHER, LOCK M8                | 2           |  |
| 77#        | 954404230       | CLAMP                          | 2           |  |
| 78#        | 0105050616      | BOLT, 6X15.....                | 2.....      | REPLACES P/N 001220615                         |
| 79#        | 952404470       | WASHER, FLAT M6.....           | 2.....      | REPLACES P/N 031106100                         |
| 80#        | 020106050       | NUT, M6.....                   | 2.....      | REPLACES P/N 020306050                         |
| 81#        | 030206150       | WASHER, LOCK M6                | 2           |  |
| 82         | WTANKR60        | WATER TANK KIT .....           | 1.....      | INCLUDES ITEMS W/#<br>CONTACT UNIT SALES DEPT. |

# TRANSPORT WHEEL ASSY. (OPTION)



## **TRANSPORT WHEEL ASSY. (OPTION)**

---

| <u>NO.</u> | <u>PART NO.</u> | <u>PART NAME</u>       | <u>QTY.</u> | <u>REMARKS</u>         |
|------------|-----------------|------------------------|-------------|------------------------|
| 1          | 463342172       | AXLE                   | 1           |                        |
| 2          | 959404311       | WHEEL, 150X42          | 2           |                        |
| 3          | 0401450200      | WASHER, FLAT M20.....  | 2.....      | REPLACES P/N 031120320 |
| 4          | 025203030       | COTTER PIN, SPLIT 3X30 | 2           |                        |

# PARTS MANUAL

## HERE'S HOW TO GET HELP

PLEASE HAVE THE MODEL AND SERIAL  
NUMBER ON-HAND WHEN CALLING

### UNITED STATES

#### *Multiquip Inc.*

(310) 537- 3700  
6141 Katella Avenue Suite 200  
Cypress, CA 90630  
E-MAIL: [mq@multiquip.com](mailto:mq@multiquip.com)  
WEBSITE: [www.multiquip.com](http://www.multiquip.com)

### CANADA

#### *Multiquip*

(450) 625-2244  
4110 Industriel Boul.  
Laval, Quebec, Canada H7L 6V3  
E-MAIL: [infocanada@multiquip.com](mailto:infocanada@multiquip.com)

### UNITED KINGDOM

#### *Multiquip (UK) Limited Head Office*

0161 339 2223  
Unit 2, Northpoint Industrial Estate,  
Globe Lane,  
Dukinfield, Cheshire SK16 4UJ  
E-MAIL: [sales@multiquip.co.uk](mailto:sales@multiquip.co.uk)

© COPYRIGHT 2021, MULTIQUIP INC.

Multiquip Inc, the MQ logo and the Mikasa logo are registered trademarks of Multiquip Inc. and may not be used, reproduced, or altered without written permission. All other trademarks are the property of their respective owners and used with permission.

This manual MUST accompany the equipment at all times. This manual is considered a permanent part of the equipment and should remain with the unit if resold.

The information and specifications included in this publication were in effect at the time of approval for printing. Illustrations, descriptions, references and technical data contained in this manual are for guidance only and may not be considered as binding. Multiquip Inc. reserves the right to discontinue or change specifications, design or the information published in this publication at any time without notice and without incurring any obligations.

Your Local Dealer is:

