

RIDE-ON POWER TROWELS



MQ **WHITEMAN**
MULTIQUIP®

More power to the floor



HYDRAULIC DRIVE TROWELS

The **MQ Whiteman STXDF** features a drive system that increases overall efficiency by transferring a higher percentage of engine horsepower to the work surface.

STX

STXDF
117" Path width
150 RPM Max.



Drive System

- **Ford Power Products 2.5 Liter engine** produces 84 HP, ensuring optimum torque for panning while bringing more power to the floor for burnishing.
- **Aluminum engine block** features deep skirted cylinder block for rigidity. Valve train is "set for life" to provide years of maintenance-free operation.
- **Dual fuel capability** converts from gasoline to LPG for work in enclosed areas (with proper ventilation).
- **Optimized hydraulic system** uses high-efficiency, variable displacement pump and radial piston drive motors to improve performance.
- **Cyclonic Oil Reservoir** eliminates the possibility of cavitation by removing trapped air in the system while reducing oil requirements by 50%.
- **Sectional stabilizer ring** enhances rigidity while providing easy maintenance.
- **Redesigned spider interface** eliminates possibility of driveshaft failures under heavy loads and reduces down time when routine maintenance is required.
- **Rotor Jog** facilitates lifting; allows operator to jog the rotors to prevent surface marring while standing in front of the machine.



STXDF Control Panel

Design

- **All-new frame design** features walk-around deck and with easy access to service areas.
- **Outstanding illumination** for indoor or nighttime finishing is provided by six LED lights.
- **Ergonomic controls** and seating area reduce operator fatigue.
- **Operator convenience features** include a USB accessory outlet and cup holder.
- **LPG tanks** sold separately.

Operator Controls

- **Digital display** provides information at a glance. Includes data on blade pitch, rotor speed, fuel selection, fuel level, engine speed, cruise control selection and critical engine alerts.
- **Active Speed Control** enables operator to precisely set rotor speeds using the digital interface. Actively monitors drive system to maintain consistent rotor speeds under varying load conditions.
- **Rotor speed is adjusted** by dialing in the preferred setting — up to 150RPM — using the control knob.
- **Visual Pitch Indicator** displays blade pitch on controller screen and enables operators to attain preferred pitch angle in an easy and repeatable manner.

HYDRAULIC DRIVE TROWELS

The **STX series ride-on trowel** is the industry leader in producing maximum floor flatness. Benefits that are expected by contractors and delivered by the industry leader



STX

STX6H

117" Path width

130 RPM Max.

Drive System

- **Liquid cooled 70HP Hatz 4H50TIC turbo diesel engine** complies with US EPA Tier 4 Final emissions requirements. (Standard on STX6H and HTX6H)
- **Patented Engine Power Management** senses engine load and adjusts hydraulic pump stroke to allow the engine to operate at peak efficiency.
- **Six blade spider assemblies** assure the flattest floors possible with 33% more blade contact.
- **Retardant spray system**, actuated by controls located on the steering handles, provides uniform coverage of the slab surface.
- **Operator convenience** features include a USB accessory outlet and cup holder.
- **Cruise control** reduces operator fatigue during low speed operations.

Operator Controls

- **SmartPitch™ control** synchronizes blade pitch for both rotors with a single button.
- **6 LED lights** provide state of the art illumination for night time or indoor work.
- **Ergonomically designed** cock pit for easy access to all controls.
- **Design**
- **Automatic shut-down** stops the rotors from turning if the operator stands up while the engine is running.
- **Adjustable seat** features armrests and essential back support. All controls and warning lights are convenient to the operator.
- **Increased chassis rigidity and stability** achieved by lower center of gravity, reduces body roll, minimizes over-steer and improves steering feedback and operator control.

HYDRAULIC DRIVE TROWELS

The **HTX series ride-on trowel** features innovative technology, power and durability. The Hatz turbo diesel engine produces high productivity exceeding contractor expectations.



HTX
HTX6H
92" Path width
160 RPM Max.

Drive System

- **Liquid cooled 70HP Hatz 4H50TIC turbo diesel engine** complies with US EPA Tier 4 Final emissions requirements. (Standard on STX6H and HTX6H)
- **Patented Engine Power Management** senses engine load and adjusts hydraulic pump stroke to allow the engine to operate at peak efficiency.
- **Six blade spider assemblies** assure the flattest floors possible with 33% more blade contact.

Operator Controls

- **SmartPitch™ control** synchronizes blade pitch for both rotors with a single button.
- **6 LED lights** provide state of the art illumination for night time or indoor work.
- **Ergonomically designed** cock pit for easy access to all controls.

- **Retardant spray system**, actuated by controls located on the steering handles, provides uniform coverage of the slab surface.
- **Operator convenience** features include a USB accessory outlet and cup holder.
- **Cruise control** reduces operator fatigue during low speed operations.

Design

- **Automatic shut-down** stops the rotors from turning if the operator stands up while the engine is running.
- **Adjustable seat** features armrests and essential back support. All controls and warning lights are convenient to the operator.
- **Increased chassis rigidity and stability** achieved by lower center of gravity, reduces body roll, minimizes over-steer and improves steering feedback and operator control.

HYDRAULIC TROWEL STANDARD FEATURES



Proportional hydraulic steering and joystick controls allow precision performance with minimal effort, preventing operator fatigue.



Multifunction display provides operator with easy-to-read data including engine speed, fuel levels and alerts.



The retardant tank holds approximately 5 US gallons.

HYDRAULIC DRIVE TROWELS

The LD6SL is the only fully hydrostatic 6-foot ride-on trowel in the market today. Incorporating a proportional servo controlled pump and high torque drive motors, the LD6SL can achieve performance levels unmatched in the industry by any 6-foot ride-on trowel.

LD6

LD6SL
75" Path width
140 RPM Max.

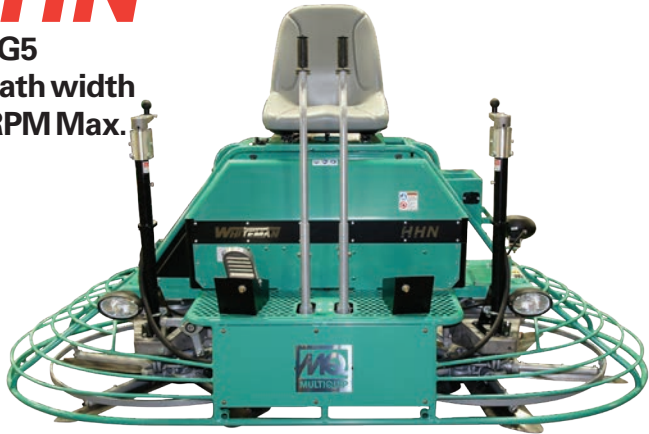


- **23 HP Vanguard V twin engine.**
- **Fully hydrostatic drive** produces efficient power transfer while keeping maintenance costs to a minimum. System eliminates wear items like belts, clutches and driveline components.
- **Poclair pump and Parker drive motors** ensure optimum torque for panning, while delivering the efficiency required for high speed burnishing.
- **Proportional hydraulic steering** offers quick response with minimal operator effort.
- **Improved stability** — Engine placement lowers overall center of gravity and reduces frame roll.
- **Rebuildable spider assemblies** reduce maintenance costs.
- **Electric linear actuators** control pitch for precision blade pitch control.
- **Ergonomic controls** reduce operator fatigue and enhance productivity.
- **Built-in** lights and spray system; configured to accept the LD6EK Edger Kit.

MECHANICAL DRIVE TROWELS

HHN

HHNG5
92" Path width
180 RPM Max.



Drive System

- **High-performance engine** — 35 HP Vanguard.
- **Continuously Variable Transmission (CVT)** provides superior performance by constantly adjusting the drive ratio to obtain torque and speed during all phases of finishing from low speed torque to high speed burnishing.

- **Backed by a factory 3 year warranty, the Helical gearbox design** offers the industry's most efficient, coolest running trouble free design on the market today.
- **SpiderAssemblies** feature long lasting wear plates and spider hubs and can be economically rebuilt. Standard model comes with 5 blade configuration.

Design

- **Easy Access Frame Designs** simplify maintenance and offer convenient access to all serviceable components.
- **Lifting points are built into the machine** for balanced lifting. (Lifting straps included)

Operator Controls

- **LED Lighting** provides state of the art illumination for night time or indoor work.

JWN

JWN24HTCSL
75" Path width
180 RPM Max.



Drive System

- **High-performance engine** withstands the rigors of concrete finishing — 24 HP Honda.
- **CVT drive system** system allows for a more efficient transfer of engine horsepower to the work surface.

Design

- **Entry level ride on trowels** offer increased value at an affordable cost.
- **Fan cooled worm drive gearboxes** for years of trouble free service.
- **SpiderAssemblies** feature long lasting wear plates and spider hubs and can be economically rebuilt. Standard model comes with 4 blade configuration.

Operator Controls

- **LED lighting** for night time or indoor work.
- **Patented steering assist** makes controlling the machine remarkably easy and reduces operator fatigue.
- **Retardant spray system** standard.

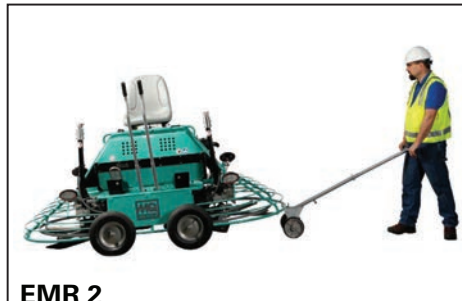
Specifications

Model	Path Width in. (cm)	Rotor RPM	Blades Per Rotor	Steering Type	Engine	HP	Engine Cooling	Run Time gal./hr. (ltr/hr)	Fuel Tank Capacity gal. (ltr)	LxWxH in. (cm)	Operating Weight lbs. (kg)	Wheel Kit*
Twin 60" Non-Overlapping Hydraulic Drive												
STXDF	117 (297)	0-150	6	Proportional Hydraulic	Ford Power Products	84	Liquid	3.4 (12.8)	18 (68)	125 x 65 x 57 (317 x 165 x 144)	2,769 (1255)	EMR3
Twin 60" Non-Overlapping Hydraulic Drive												
STX6H	117 (297)	0-130	6	Proportional Hydraulic	Hatz 4H50TIC	70	Liquid	3.4 (12.8)	20 (75.7)	125 x 65 x 57 (317 x 165 x 144)	2,692 (1221)	EMR3
Twin 48" Non-Overlapping Hydraulic Drive												
HTX6H	92 (233)	0-160	6	Proportional Hydraulic	Hatz 4H50TIC	70	Liquid	3.2 (12.1)	10 (37.85)	95 x 48 x 59 (241 x 122 x 149)	2,496 (1132)	EMR3
Twin 36" Non-Overlapping Hydraulic Drive												
LD6SL	75 (191)	0-140	4	Proportional Hydraulic	Vanguard	23	Air	1.5 (3.88)	4 (15)	75 x 36 x 55 (190 x 91 x 139)	889 (403)	EMR2, EMR3, LD6EZM
Twin 48" Non-Overlapping Mechanical Drive												
HHNG5	92 (233)	0-180	5	Spring Assist Mechanical	Vanguard	35	Air	2 (7.57)	7 (26)	95 x 48 x 59 (241x122x149)	1083 (491)	EMR2 or EMR3
Twin 36" Non-Overlapping Mechanical Drive												
JWN24HTCSL	75 (191)	40-180	4	Spring Assist Mechanical	Honda	24	Air	1.71 (6.47)	4.4 (17)	77 x 39 x 48 (196 x 99 x 122)	741 (336)	EMR2

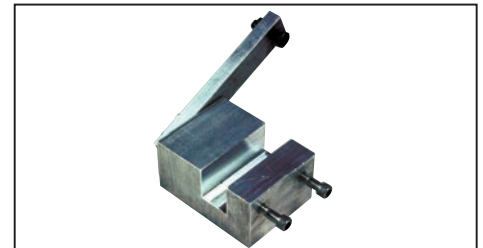
Accessories



EMR 3
Easy Mover transport dolly for HTX, STX, HHN, LD6/LD6SL model ride-on trowels. Set of 2 jack stands (left/right) with 2 pneumatic tires per side.



EMR 2
Easy Mover transport dolly for JWN, HTN, HHN, LD6/LD6SL model ride-on trowels. Includes 4 pneumatic tires and T-handle control.



Arm Adjustment Fixture
This service aid ensures trowel arms are set accurately for peak performance.

- 1817 - Fits J,B, JTO, JTN, JWN, LD6/LD6SL model trowels with 1" diameter arms.
- 9177 - Fits HDA, HTN, HHN, STX, STXDF, HTX model trowels with 1¼" diameter arms.

Engine power ratings are calculated by the individual engine manufacturer and the rating method may vary among engine manufacturers. Multiquip Inc. and its subsidiary companies makes no claim, representation or warranty as to the power rating of the engine on this equipment and disclaims any responsibility or liability of

any kind whatsoever with respect to the accuracy of the engine power rating. Users are advised to consult the engine manufacturer's owners manual and its website for specific information regarding the engine power rating. *Engines using LPG fuel should be operated only in areas with adequate ventilation. NEVER operate in confined areas or in areas where the free flow of air is restricted.

Your Multiquip dealer is:

Connect with us on

