



TB11E/TB11G TuffTruk Walk-Behind Power Buggy

Assembly Instructions

The following instructions are intended to assist the user in the assembly of the TB11E or TB11G TuffTruk Walk-Behind Power Buggy. They are not intended to take the place of the Operation manual shipped with the unit. Refer to the Operation manual for safety, operation, and maintenance information. If you did not receive a manual with your power buggy, contact Multiquip at (800) 421-1244 for a replacement.

REQUIRED TOOLS

- 17 mm wrench or socket

PARTS

Verify that all parts are accounted for. See Figure 1 and Table 1.

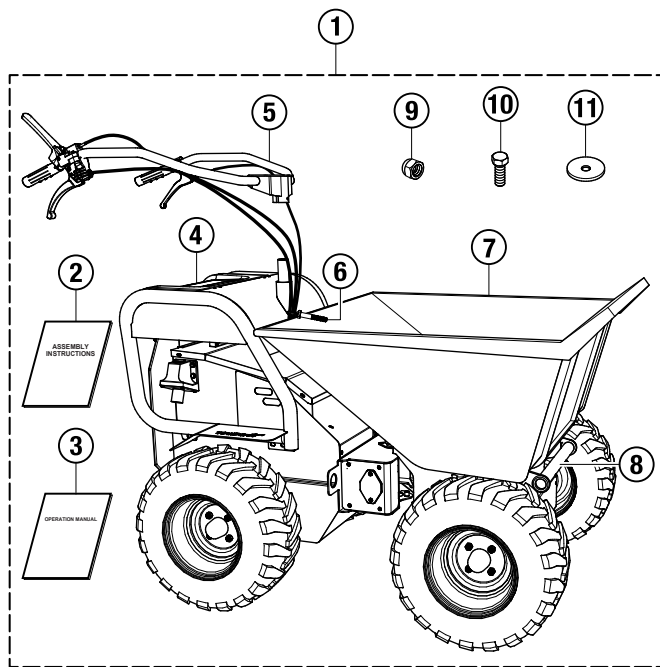


Figure 1. TuffTruk Packaging Contents

Table 1. TuffTruk Packaging Contents

Item	Description	Qty.	Remarks
1	Packaging Contents, TuffTruk	1	Includes items 2–11
2	Instructions, Assembly	1	
3	Operation Manual, TuffTruk	1	
4	Assembly, TuffTruk	1	Includes items 5–8
5	Assembly, Handlebar	1	
6	Pin, Cross Location	1	
7	Tub	1	
8	Tipping Frame, Tub	1	
9	Nut, Nyloc	1	
10	Bolt, Hex Head	1	
11	Washer, Flat	1	

WORK SAFELY!

Only a **qualified service technician** with proper training should perform this assembly. Follow all shop safety rules when performing this assembly.

GENERAL SAFETY

NOTICE

- Manufacturer does not assume responsibility for any accident due to equipment modifications. Unauthorized equipment modification will void all warranties.
- **DO NOT** use accessories or attachments that are not recommended by Multiquip for this equipment. Damage to the equipment and/or injury to the user may result.

POWER BUGGY SAFETY

⚠ WARNING

- **NEVER** disconnect any **emergency or safety devices**. These devices are intended for operator safety. Disconnection of these devices can cause **severe injury, bodily harm, or even death**. Disconnection of any of these devices will void all warranties.

PREPARATION

Place the TuffTruk packaging in an area free of dirt and debris, and make sure it is on secure, level ground. Remove all contents from the packaging and discard the packaging materials.

HANDLEBAR INSTALLATION

1. Place the handlebar onto the steering pivot shaft (Figure 2).

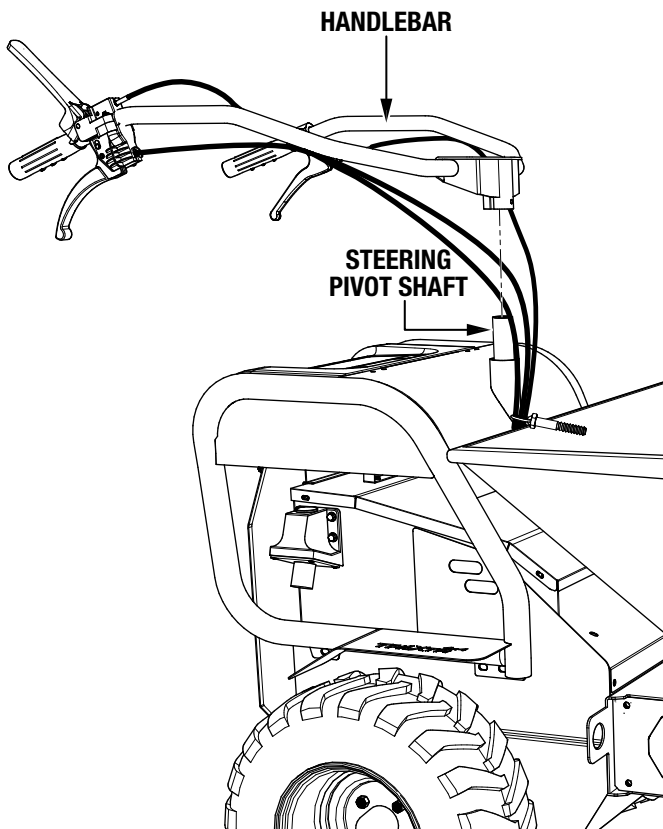


Figure 2. Handlebar Placement

2. Secure the handlebar to the steering pivot shaft with the cross location pin and nyloc nut (Figure 3).

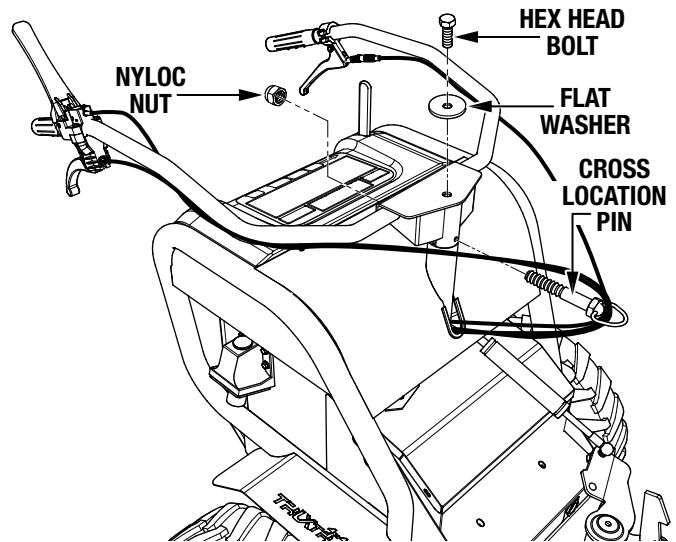


Figure 3. Handlebar Installation

3. Install the hex head bolt and flat washer onto the top of the handlebar (Figure 3) and tighten securely.

TUB INSTALLATION

CAUTION

This portion of the assembly requires **two people** to perform. **DO NOT** attempt to move or install the tub alone!

The tub has been installed in reverse for shipping purposes. To correctly orient the tub for operation, proceed as follows.

1. Place the tub in the discharge position (Figure 4).

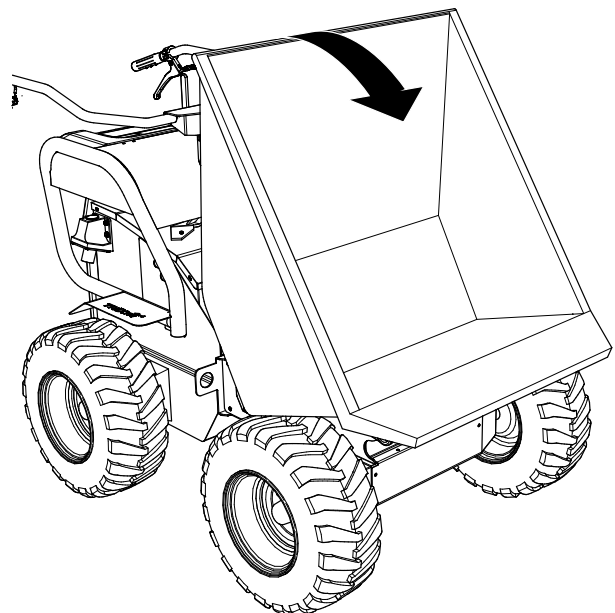


Figure 4. Tub Discharge Position

2. Place both locking levers in the **unlock** position (Figure 5).

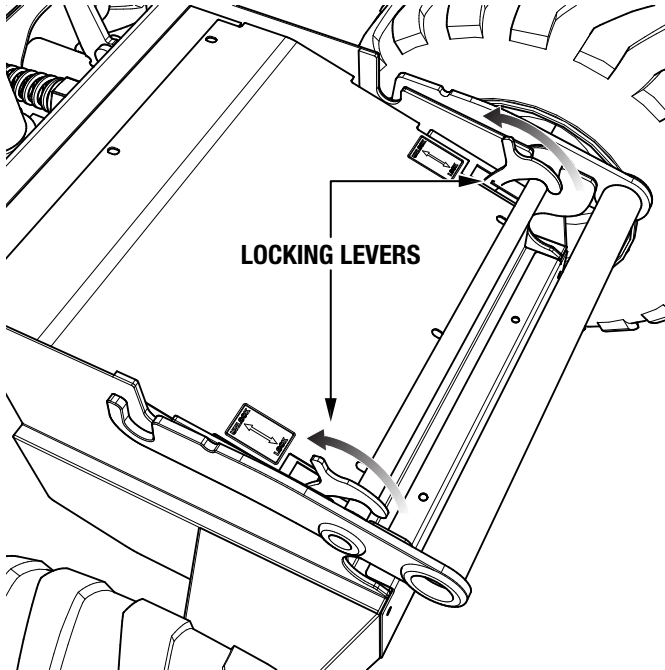


Figure 5. Locking Levers (Unlock)

3. **With two people**, lift and remove the tub (Figure 6). Place the tub onto its side away from the unit.

CAUTION

DO NOT attempt to lift or move the tub by yourself.

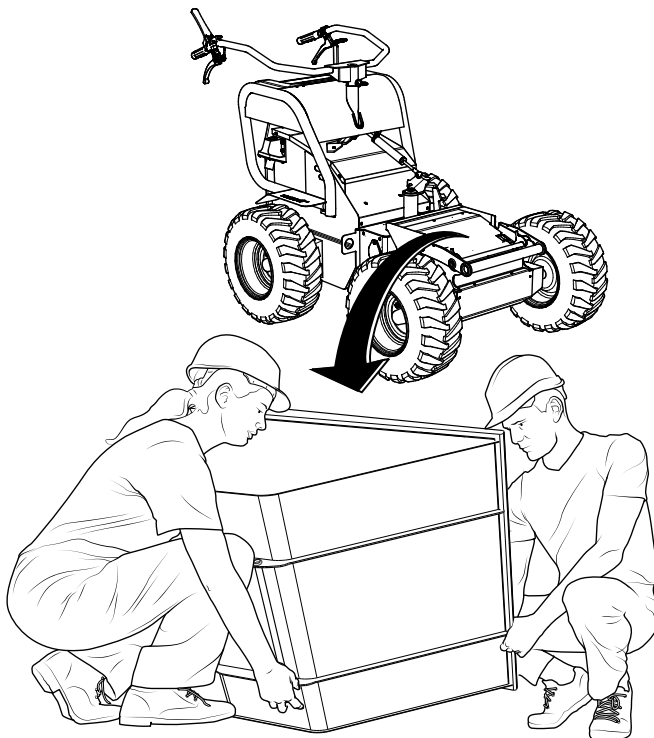


Figure 6. Tub Removal

4. Attach the tub tipping bracket to the base of the tub as shown in Figure 7.

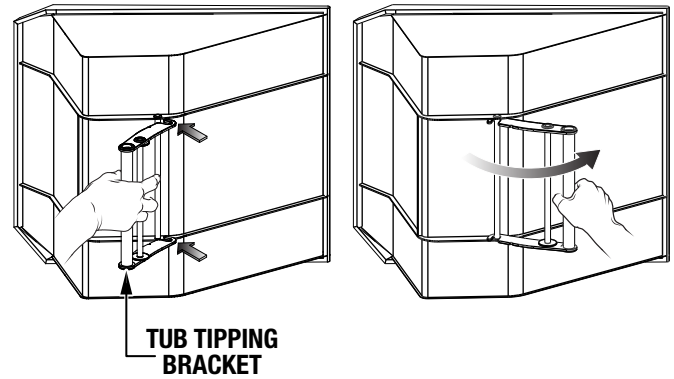


Figure 7. Tipping Bracket Installation

5. **With two people**, lift the tub and tipping bracket assembly onto the chassis (Figure 8). Make sure the tipping bracket pivot bar rests within the tipping location slots.

CAUTION

DO NOT attempt to lift or move the tub by yourself.

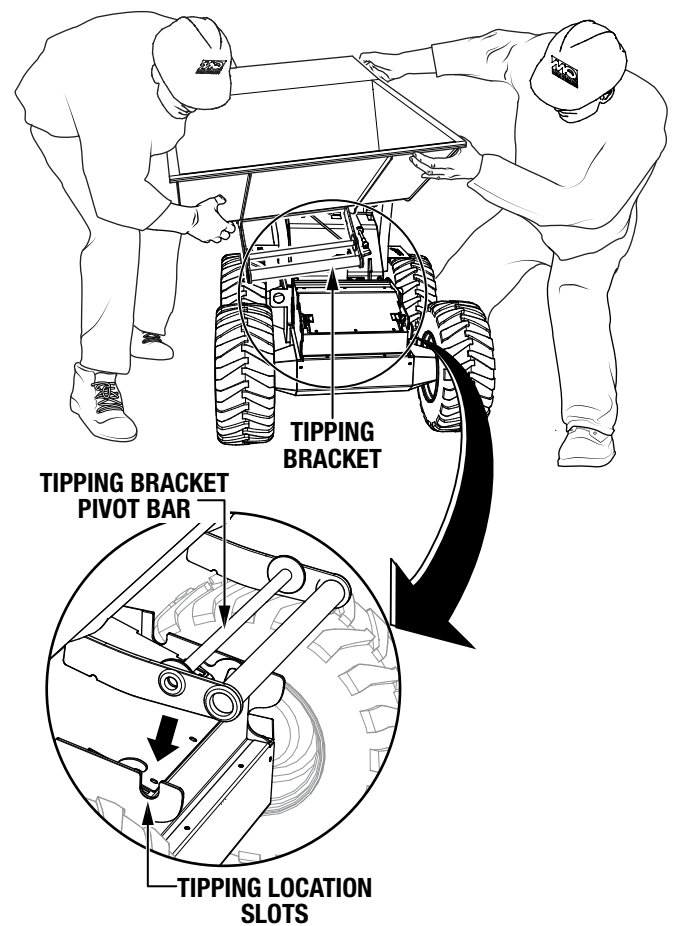


Figure 8. Tub Placement

6. Tilt the tub into its discharge position and place both locking levers in the **lock** position (Figure 9).

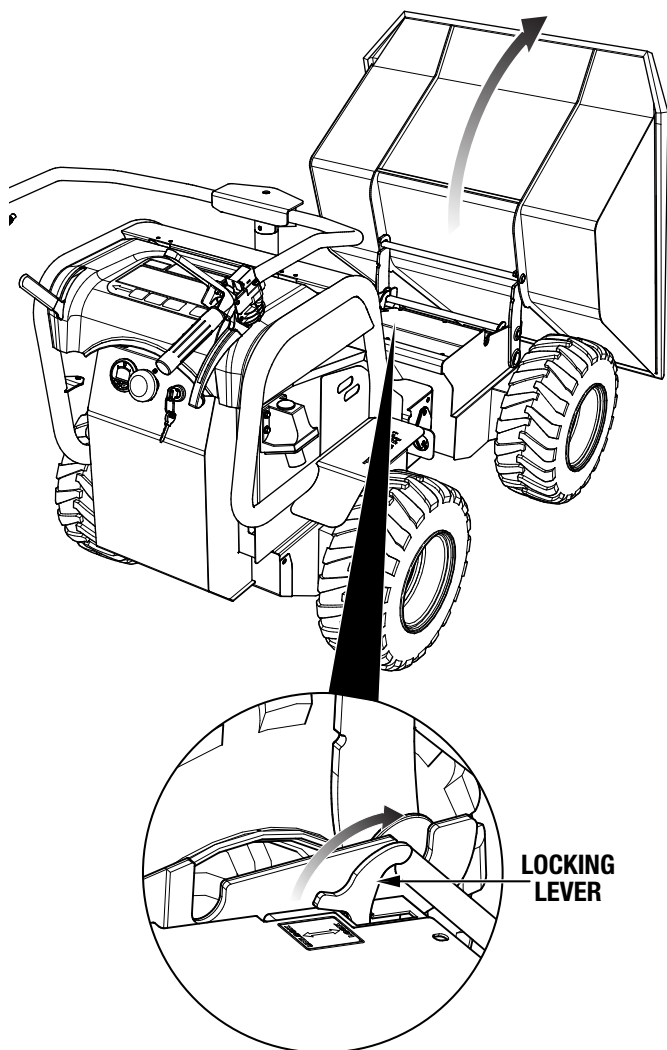


Figure 9. Locking Levers (Lock)

7. Place the tub in the forward position and make sure it is secured firmly under the tub latch (Figure 10). Adjust the tub latch if necessary.

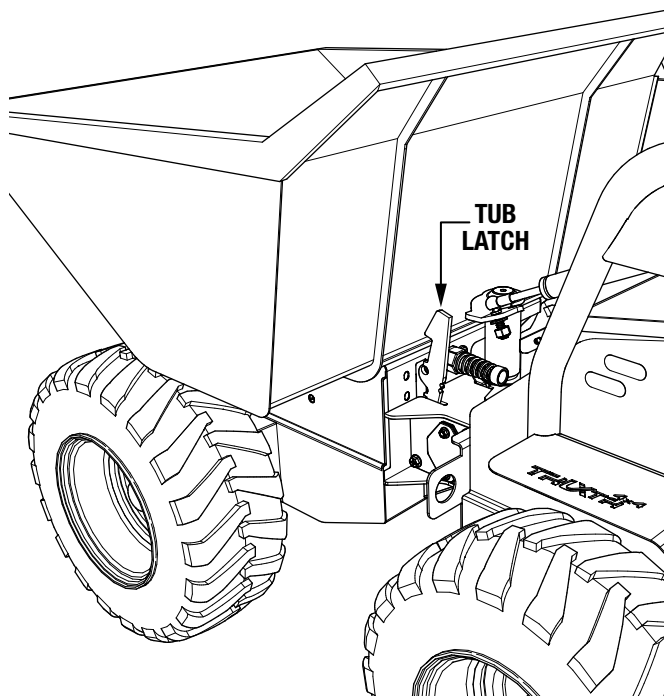


Figure 10. Tub Latch

READ THE MANUAL!

Your TuffTruk is now fully assembled! Refer to the Operation manual included with the unit for important operation, maintenance, and safety information.

NOTICE

DO NOT attempt to operate or service this equipment without reading the manual!

[illegible]



TB11E/TB11G Walk-Behind Power Buggy

Assembly Instructions

HERE'S HOW TO GET HELP

PLEASE HAVE THE MODEL AND SERIAL
NUMBER ON-HAND WHEN CALLING

UNITED STATES

Multiquip Corporate Office

18910 Wilmington Ave.
Carson, CA 90746
Contact: mq@multiquip.com

Tel. (800) 421-1244
Fax (310) 537-3927

MQ Parts Department

800-427-1244
310-537-3700

Fax: 800-672-7877

Service Department

800-421-1244
310-537-3700

Warranty Department

800-421-1244
310-537-3700

Fax: 310-943-2249

Technical Assistance

800-478-1244

Fax: 310-943-2238

CANADA

Multiquip

4110 Industriel Boul.
Laval, Quebec, Canada H7L 6V3
Contact: infocanada@multiquip.com

Tel: (450) 625-2244
Tel: (877) 963-4411
Fax: (450) 625-8664

© COPYRIGHT 2018, MULTIQUIP INC.

Multiquip Inc, the MQ logo are registered trademarks of Multiquip Inc. and may not be used, reproduced, or altered without written permission. All other trademarks are the property of their respective owners and used with permission.

This manual MUST accompany the equipment at all times. This manual is considered a permanent part of the equipment and should remain with the unit if resold.

The information and specifications included in this publication were in effect at the time of approval for printing. Illustrations, descriptions, references and technical data contained in this manual are for guidance only and may not be considered as binding. Multiquip Inc. reserves the right to discontinue or change specifications, design or the information published in this publication at any time without notice and without incurring any obligations.

Your Local Dealer is:

