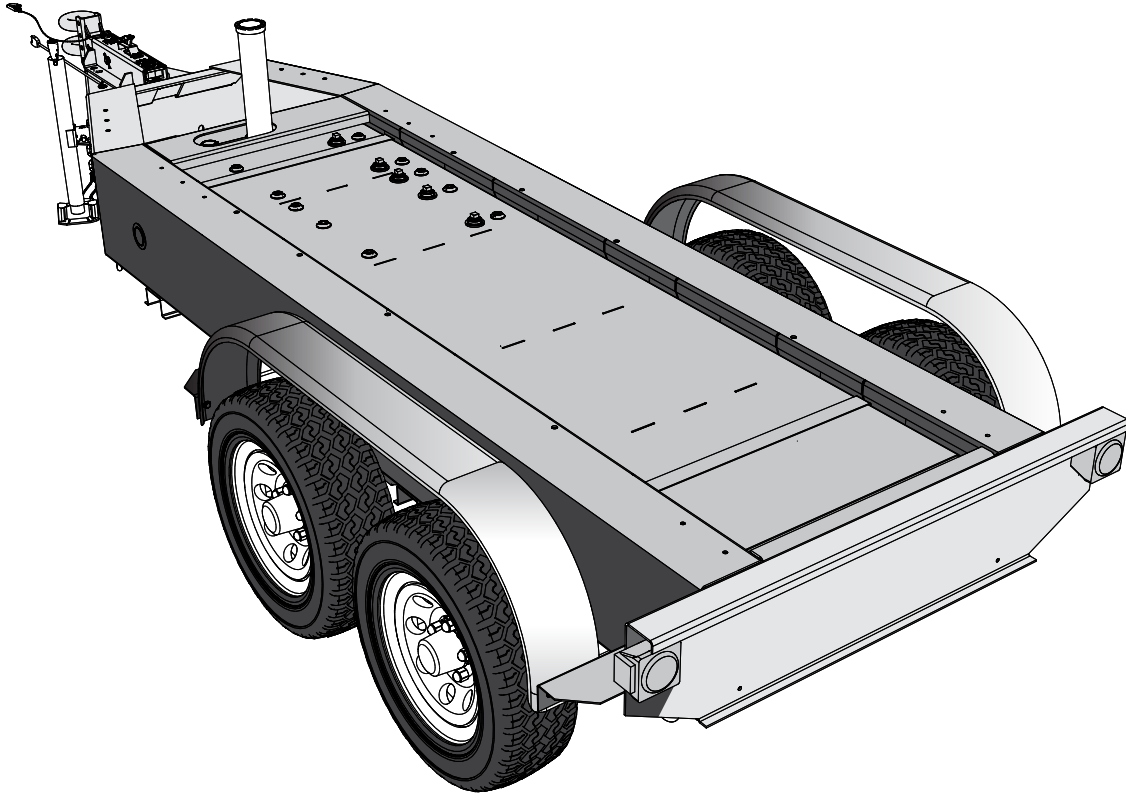




TRLR85XF2

Tandem Axle Trailer



TRLR85XF2 Technical Data

Gross Vehicle Weight Rating (GVWR) — 7,000 lbs (3,175 kg)	Tire Size — ST225/75R15 LR-D
Gross Axle Weight Rating (GAWR) — 3,500 lbs (1,588 kg) (ea.)	Wheel Bolt Pattern — 6 Lug
Actuator Rating — 8,000 lbs (3,629 kg)	Tire Load Rating — 2,540 lbs/1152 kg (ea.)
Coupler Rating — See coupler options on back page	Dimensions (LxWxH) — See back page

STANDARD TRAILER EQUIPMENT

- Fits MQ Power Generator Models DCA70SSJU4i, DCA70SSJU4F
- Tandem-axle Design with Torsion Type Suspension
- Heavy-Duty Welded Steel Frame Construction
- Formed Channel for Generator Mounting and Support
- Integral Fuel Cell; Single-wall Steel Design, 180 Gallon Capacity
- Replaceable, Bolt-on Hydraulic Brake Actuator
- 4-hole Channel Allows 3-position, Adjustable Coupler Height; 4-inches O/A
- Tongue Mounted Swivel Jack with Flat Disc-foot (rated 3,000 lbs. lift capacity)
- Replaceable Bolt-on Steel Bumper, Fenders, and Fender Mounting Brackets
- Rugged Textured Black Powder-Coated Frame, Channel, Actuator and Fenders
- D.O.T. Approved Tail Lamps, Stop Lamps, Turn Signal Lamps, Side Marker Lamps
- Weatherproof, Rubber Armored, 2-piece Trailer Light Wiring Harness Surge Hydraulic-actuated Drum Brakes (all axles)
- Hydraulic Uni-servo Drum Brakes with Free-backing Plates-10-inch Cluster
- D.O.T. Steel Brake Lines, Brass Tees & Rubber Hydraulic Brake Hoses



TRLR85XF2

Tandem Axle Trailer

OPTIONAL TRAILER EQUIPMENT

- Bolt-on Electric Brake Coupler Plate with Electric-actuated Drum Brakes (all axles — self-adjusting brake actuators)
- Electric Breakaway Safety Device (electric-actuated brakes)
- Anti-Theft Wheel Lock
- Front and Rear Stabilizer Jacks
- Spare Tire with Locking Mount
- Side-Mounted Storage Boxes

Coupler Options

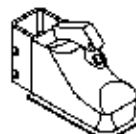
3" Pintle Eye
20,000 lbs. (9,072 kg)

#EE36264



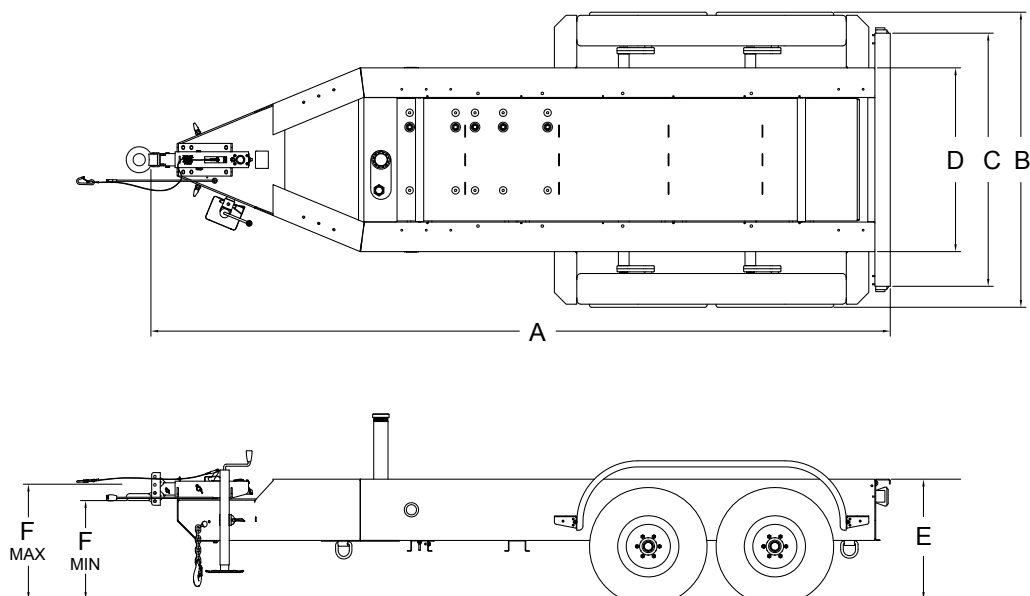
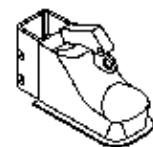
2" Ball Coupler
10,000 lbs. (4,536 kg)

#EE43254



2-5/16" Ball Coupler
14,000 lbs. (6,350 kg)

#EE43253



Trailer Dimensions						
A	B	C	D	E	F	
					Min	Max
180.86 in (4593.84 mm)	72.25 in (1835.15 mm)	62 in (1574.8 mm)	45 in (1143 mm)	29.45 in (748.03 mm)	24.22 in (615.18 mm)	28.22 in (716.78 mm)

Trailer Weight	
Without fuel	With fuel
1,740 lbs. (789.25 kg)	2,990 lbs. (1,356 kg)

* Weight is approximate

