

PARTS MANUAL



MODEL WM63SLF PLASTER AND MORTAR MIXER (MPOWER 177F-BH 9.0 HP GASOLINE ENGINE)

Revision #0 (10/21/22)

To find the latest revision of this publication or associated operation manual, visit our website at: www.multiquip.com



THIS MANUAL MUST ACCOMPANY THE EQUIPMENT AT ALL TIMES.

WM63SLF Plaster and Mortar Mixer

Explanation of Code in Remarks Column..... 4
Suggested Spare Parts 5

Component Drawings

Nameplate and Decals 6–7
Frame Assembly 8–9
Paddle Shaft Assembly..... 10–11
Steel Tub Assembly 12–13
Drum and Paddle Shaft Complete Assembly .. 14–15
Axle Assembly 16–17
Engine Assembly 18–19
Cabinet Assembly..... 20–21
Engine Service Parts 22–23

NOTICE

Specifications and part numbers are subject to change without notice.

EXPLANATION OF CODE IN REMARKS COLUMN

The following section explains the different symbols and remarks used in the Parts section of this manual. Use the help numbers found on the back page of the manual if there are any questions.

NOTICE

The contents and part numbers listed in the parts section are subject to change **without notice**. Multiquip does not guarantee the availability of the parts listed.

SAMPLE PARTS LIST

NO.	PART NO.	PART NAME	QTY.	REMARKS
1	12345	BOLT	1	INCLUDES ITEMS W/%
2%		WASHER, 1/4 IN.		NOT SOLD SEPARATELY
2%	12347	WASHER, 3/8 IN. ...	1	MQ-45T ONLY
3	12348	HOSE	A/R	MAKE LOCALLY
4	12349	BEARING	1	S/N 2345B AND ABOVE

NO. Column

Unique Symbols — All items with same unique symbol (@, #, +, %, or >) in the number column belong to the same assembly or kit, which is indicated by a note in the “Remarks” column.

Duplicate Item Numbers — Duplicate numbers indicate multiple part numbers, which are in effect for the same general item, such as different size saw blade guards in use or a part that has been updated on newer versions of the same machine.

NOTICE

When ordering a part that has more than one item number listed, check the remarks column for help in determining the proper part to order.

PART NO. Column

Numbers Used — Part numbers can be indicated by a number, a blank entry, or TBD.

TBD (To Be Determined) is generally used to show a part that has not been assigned a formal part number at the time of publication.

A blank entry generally indicates that the item is not sold separately or is not sold by Multiquip. Other entries will be clarified in the “Remarks” Column.

QTY. Column

Numbers Used — Item quantity can be indicated by a number, a blank entry, or A/R.

A/R (As Required) is generally used for hoses or other parts that are sold in bulk and cut to length.

A blank entry generally indicates that the item is not sold separately. Other entries will be clarified in the “Remarks” Column.

REMARKS Column

Some of the most common notes found in the “Remarks” Column are listed below. Other additional notes needed to describe the item can also be shown.

Assembly/Kit — All items on the parts list with the same unique symbol will be included when this item is purchased.

Indicated by:

“INCLUDES ITEMS W/(unique symbol)”

Serial Number Break — Used to list an effective serial number range where a particular part is used.

Indicated by:

“S/N XXXXX AND BELOW”

“S/N XXXX AND ABOVE”

“S/N XXXX TO S/N XXX”

Specific Model Number Use — Indicates that the part is used only with the specific model number or model number variant listed. It can also be used to show a part is NOT used on a specific model or model number variant.

Indicated by:

“XXXXX ONLY”

“NOT USED ON XXXX”

“Make/Obtain Locally” — Indicates that the part can be purchased at any hardware shop or made out of available items. Examples include battery cables, shims, and certain washers and nuts.

“Not Sold Separately” — Indicates that an item cannot be purchased as a separate item and is either part of an assembly/kit that can be purchased, or is not available for sale through Multiquip.

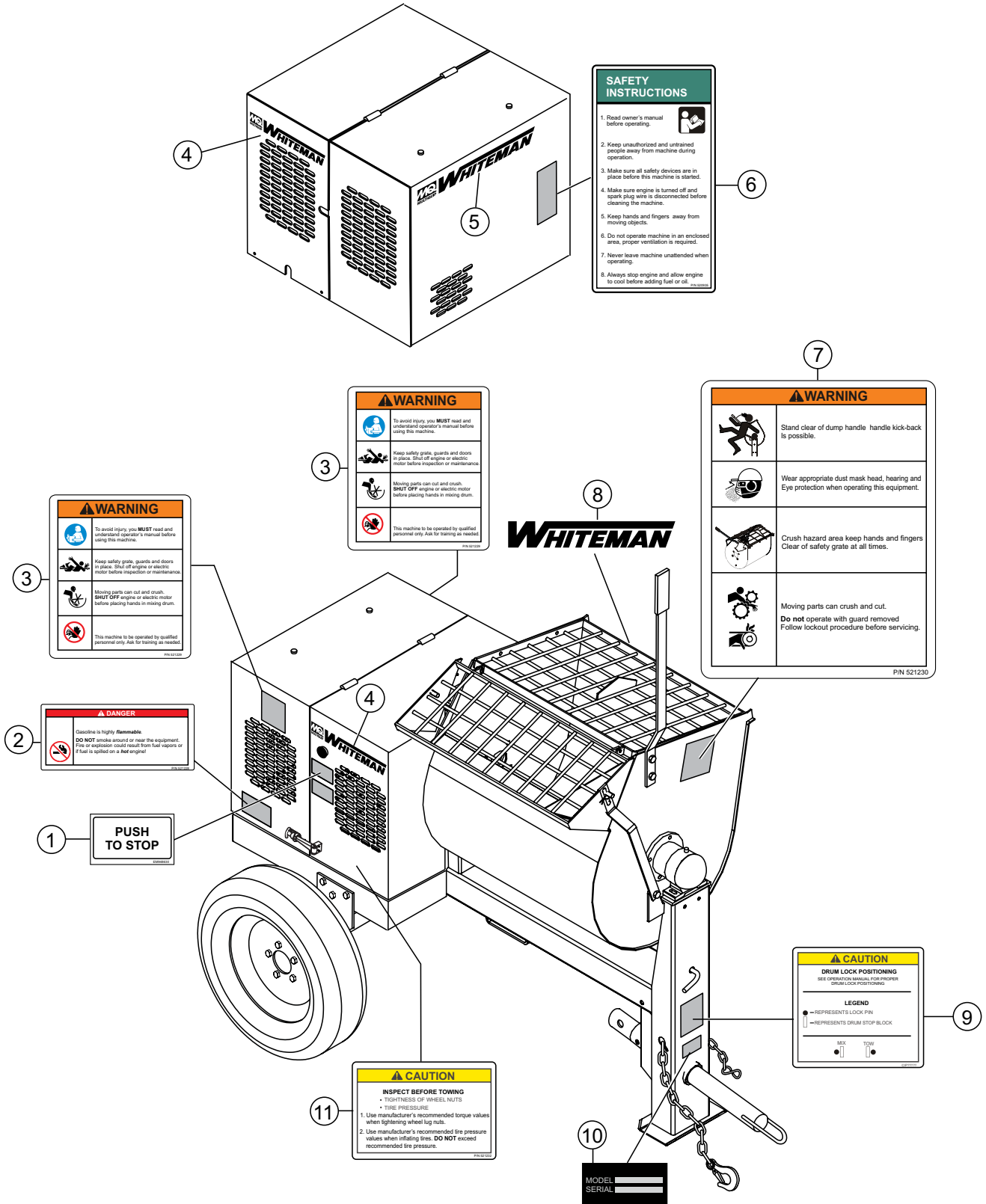
SUGGESTED SPARE PARTS

WM63SLF PLASTER AND MORTAR MIXER WITH MPOWER 177F-BH ENGINE.

1 to 3 units

Qty.	P/N	Description
6.....	07055-034	V-BELT, 4L340
2.....	EM914288	OIL SEAL, AXLE
4.....	EM903113	BEARING, CONE, AXLE
4.....	EM903012	BEARING, CUP, AXLE
2.....	530029.....	RING, RETENTION
2.....	20654-001	SEAL, SHAFT URETHANE (YELLOW)
2.....	25647-502	KIT, BLADE (RUBBERS ONLY)
3.....	17124-A1010-0001	ELEMENT, AIR CLEANER
3.....	27100-A0710-0001	SPARK PLUG, BPR6ES, NGK
1.....	23230-A0712-0001	ROPE, RECOIL STARTER
1.....	16400-A0710-0008.....	CAP WITH GASKET, FUEL TANK
1.....	16610-A0710-0008.....	FUEL FILTER CUP

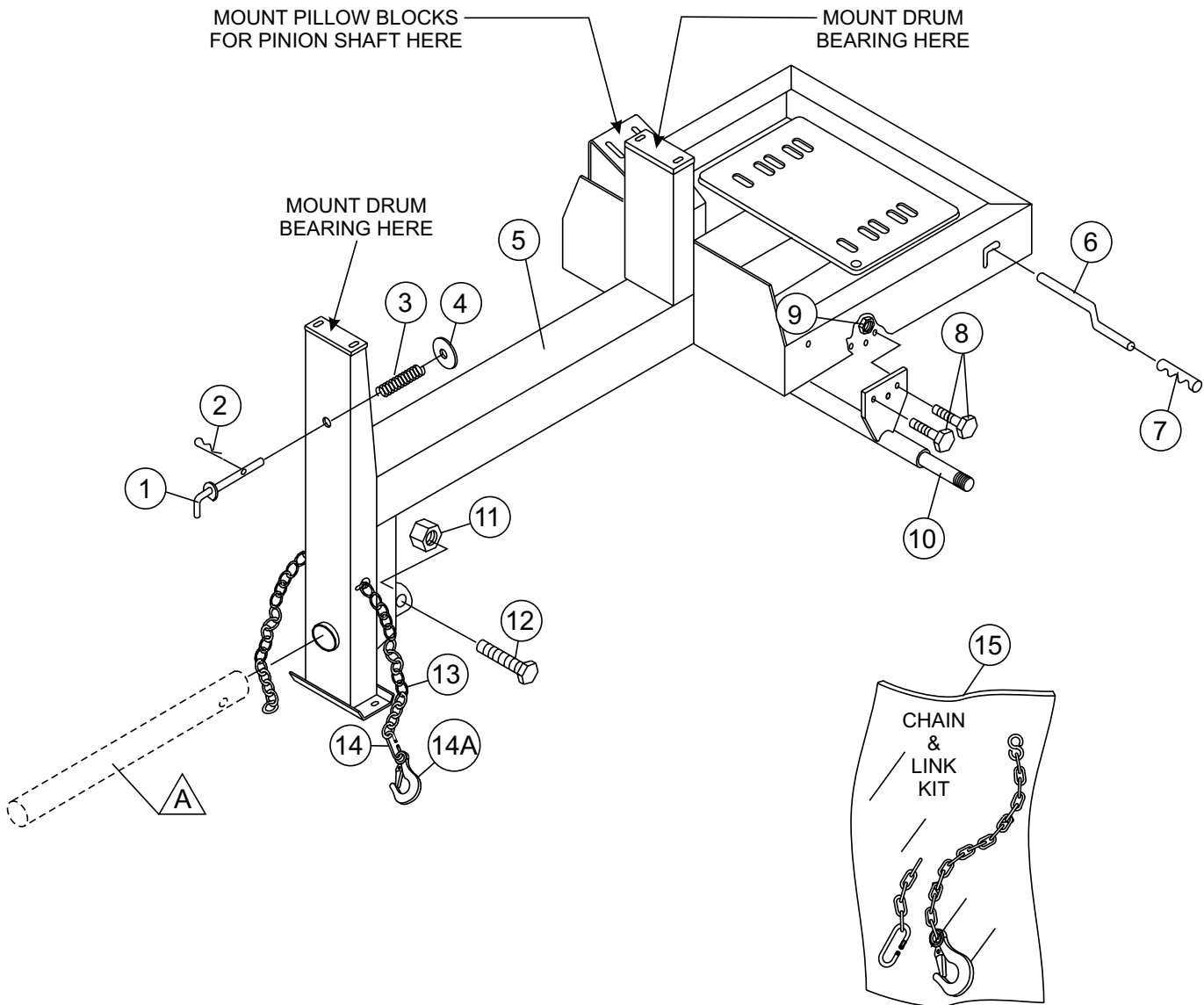
NAMEPLATE AND DECALS



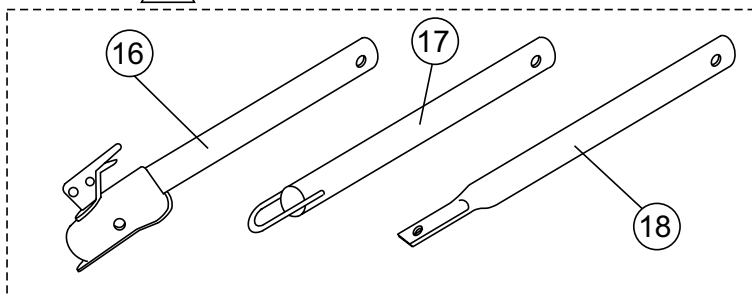
NAMEPLATE AND DECALS

<u>NO.</u>	<u>PART NO.</u>	<u>PART NAME</u>	<u>QTY.</u>	<u>REMARKS</u>
1	EM948630	DECAL, PUSH TO STOP	1	
2	521228	DECAL, DO NOT SMOKE	1	
3	521229	DECAL, READ MANUAL, CRUSH HAZARD	2	
4	515275	DECAL, MQ WHITEMAN LOGO SMALL	1	
5	504714	DECAL, MQ WHITEMAN LOGO LARGE	1	
6	520935	DECAL, SAFETY INSTRUCTIONS	1	
7	521230	DECAL, HANDLE KICK BACK, SAFETY GRATE, CRUSH HAZARD	1	
8	504715	DECAL, WHITEMAN LOGO LARGE	1	
9	521231	DECAL, DRUM LOCK POSITIONING	1	
10		NAMEPLATE	1	CONTACT MQ PARTS DEPT.
11	521232	DECAL, INSPECT BEFORE TOWING	1	

FRAME ASSY.



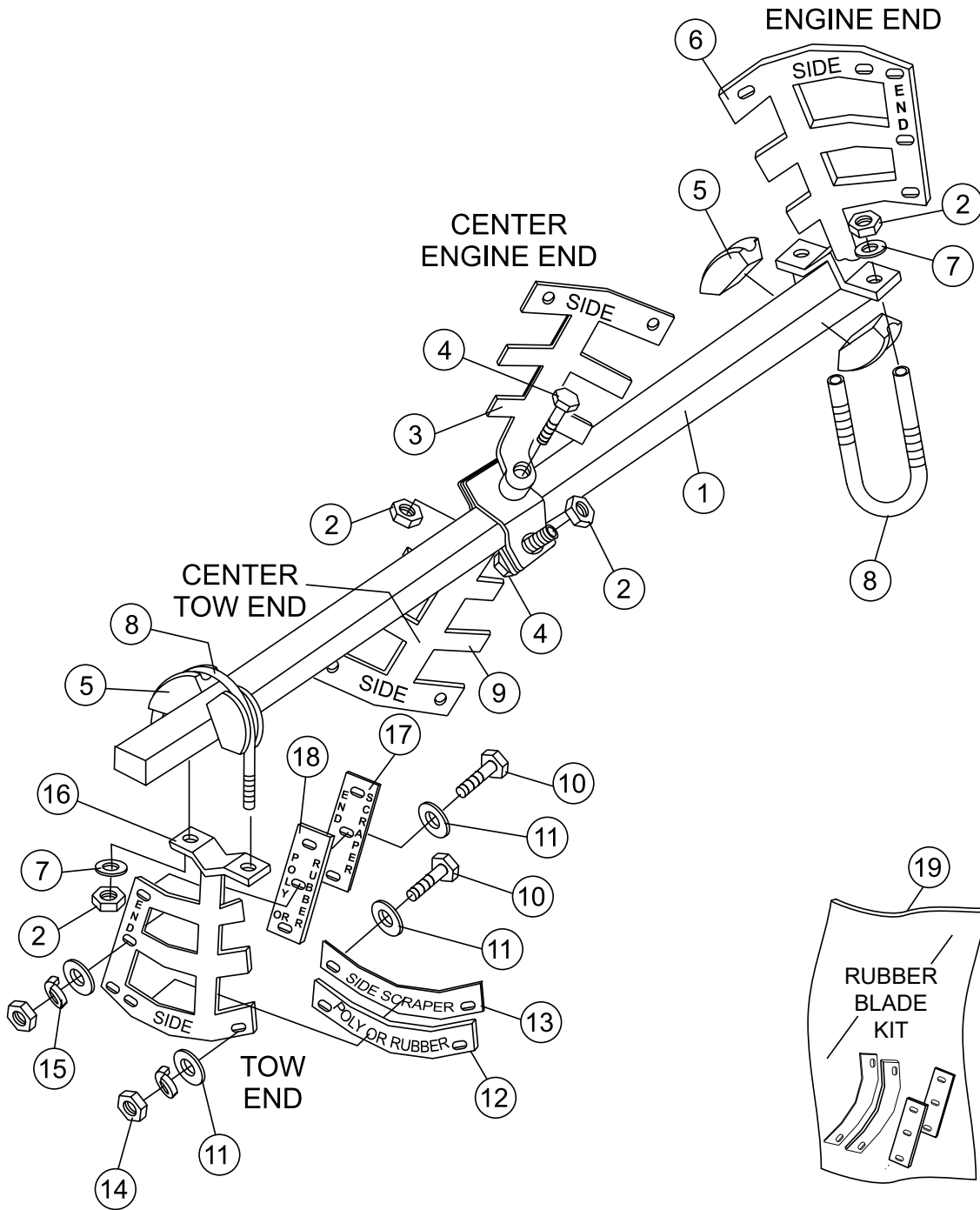
A OPTIONAL TOW BARS



FRAME ASSY.

<u>NO.</u>	<u>PART NO.</u>	<u>PART NAME</u>	<u>QTY.</u>	<u>REMARKS</u>
1	514842	LOCK, PIN	1	
2	491692	COTTER PIN	1	
3	530023	SPRING LOCKING PIN	1	
4	507444	WASHER, FLAT 3/4"	1	
5	514834	MAIN FRAME	1	
6	530013	CLUTCH HANDLE LEVER	1	
7	20278-001	CLUTCH HANDLE GRIP	1	
8	EM963692	BOLT 1/2" UNC 1-1/2"	6	
9	492584	NUT, LOCK 1/2"	6	
10	514802	AXLE, UNIVERSAL	1	
11	10176	LOCK NUT 1/2" NC	1	
12	EM124	BOLT 1/2"-13 X 4 G5	1	
13\$		SAFETY CHAIN.....	1.....	SOLD ONLY IN KIT
14\$	01004	CONNECTOR LINK	1	
14A\$	516580	CLEVIS SAFETY HOOK	1	
15	13363KIT	CHAIN AND LINK KIT.....	1.....	INCLUDES ITEMS W/\$
16	HBC-1	BALL HITCH 2-INCH.....	1.....	CONTACT UNIT SALES
17	HLC-1	LOOP HITCH.....	1.....	CONTACT UNIT SALES
18	HPC-1	PIN HITCH 1-INCH.....	1.....	CONTACT UNIT SALES

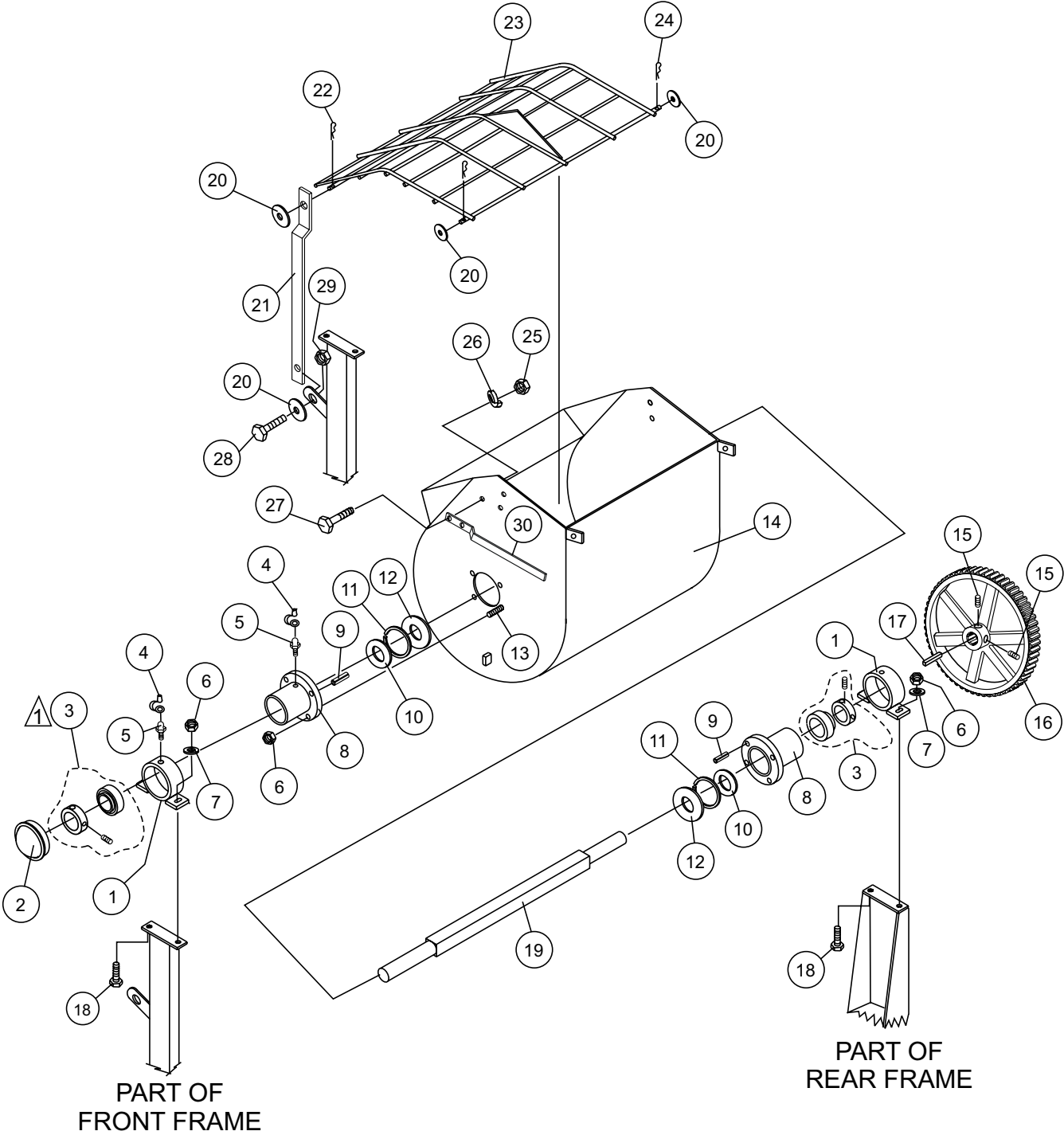
PADDLE SHAFT ASSY.



PADDLE SHAFT ASSY.

<u>NO.</u>	<u>PART NO.</u>	<u>PART NAME</u>	<u>QTY.</u>	<u>REMARKS</u>
1	514752	PADDLE SHAFT	1	
2	492584	NUT, LOCK 1/2"	6	
3	530140C	PADDLE ARM, CENTER ENGINE END	1	
4	3215	SCREW, HHC 1/2-13 X 3-1/2	2	
5	EM200292	INSERT, PADDLE ARM	4	
6	530141	PADDLE ARM, ENGINE END	1	
7	6109170	WASHER, FLAT 1/2"	6	
8	EM200297	U-BOLT, END PADDLES	2	
9	530143	PADDLE ARM, CENTER TOW END	1	
10	505196	SCREW, 3/8 X 1-1/2 " HHCS	18	
11	3019092	WASHER, FLAT 3/8"	28	
12@	25667-001	BLADE, SIDE RUBBER	4	
13	25668-001	BLADE, SIDE SCRAPPER	4	
14	1456	NUT, HEX FINISH 3/8-16	14	
15	0166 A	WASHER, LOCK 3/8" MED.	14	
16	530142C	PADDLE ARM, TOW END	1	
17	33074-001	BLADE, SCRAPPER END	2	
18@	33017-001	BLADE, RUBBER END	2	
19	25647-502	KIT, BLADE (RUBBERS ONLY)	1.....	INCLUDES ITEMS W/@

STEEL TUB ASSY.

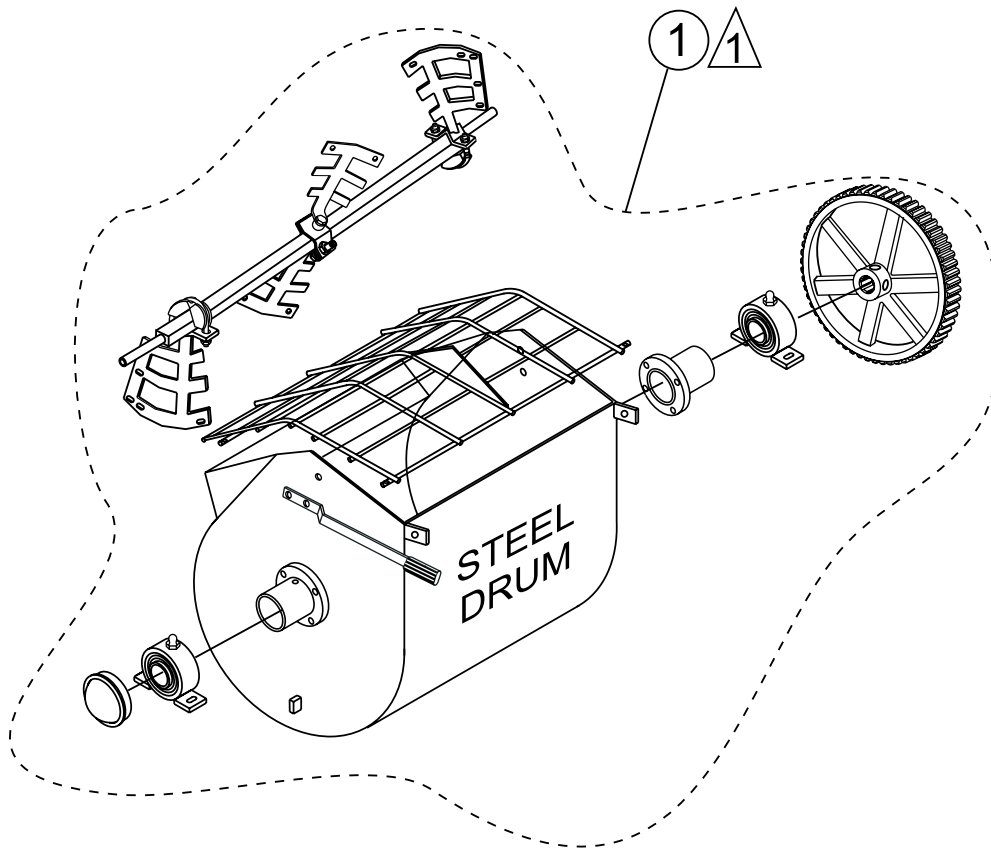


NOTES:
 ⚠ SET SCREWS AND BEARING COLLAR ARE INCLUDED WITH BEARING AND CANNOT BE PURCHASED SEPARATELY.

STEEL TUB ASSY.

<u>NO.</u>	<u>PART NO.</u>	<u>PART NAME</u>	<u>QTY.</u>	<u>REMARKS</u>
1	530028	DRUM BEARING BRACKET	2	
2	3249	CAP, DUST	1	
3	20561-001	BEARING, SEALED.....	2.....	SET SCREWS AND BEARING COLLAR CANNOT BE SOLD SEPARATELY.
4	491008	CAP, GREASE FITTING	2	
5	EM916019	FITTING, GREASE	2	
6	EM969013	NUT, NYLOCK 3/8"	12	
7	3019092	WASHER, FLAT 3/8"	4	
8	514778	TRUNNION HUB	2	
9	513453	ROLL PIN 3/16" X 3/4"	2	
10	20654-001	SEAL, SHAFT (BLACK)	2	
11	530029	RING, RETENTION	2	
12	20104-002	SEAL, SHAFT URETHANE (YELLOW)	2	
13	513452	BOLT 3/8" NC X 1/4" G5	8	
14	515009	DRUM, STEEL	1	
15	492484	SET SCREW	2	
16	530043	MAIN GEAR	1	
17	500432	KEY, 3/8" X 50 MM	1	
18	17985-012	CARRIAGE BOLT 3/8-16 X 1-1/2"	4	
19	514752	SHAFT, PADDLE	1	
20	6109170	WASHER, FLAT 1/2"	4	
21	515032	LIFT BAR	1	
22	EM925191	PIN, COTTER	1	
23	514962	GRATE	1	
24	EM924015	PIN, COTTER	2	
25	6109160	HEX NUT 1/2" G5	2	
26	6109180	WASHER, LOCK 1/2"	2	
27	EM963692	BOLT 1/2" NC 1-1/4" G5	2	
28	492393	CAPSCREW, HHCS 1/2" NC X 1-1/4"	1	
29	492584	NUT, LOCK 1/2" NC	1	
30	EM201537	HANDLE DUMP	1	

DRUM AND PADDLE SHAFT COMPLETE ASSY.

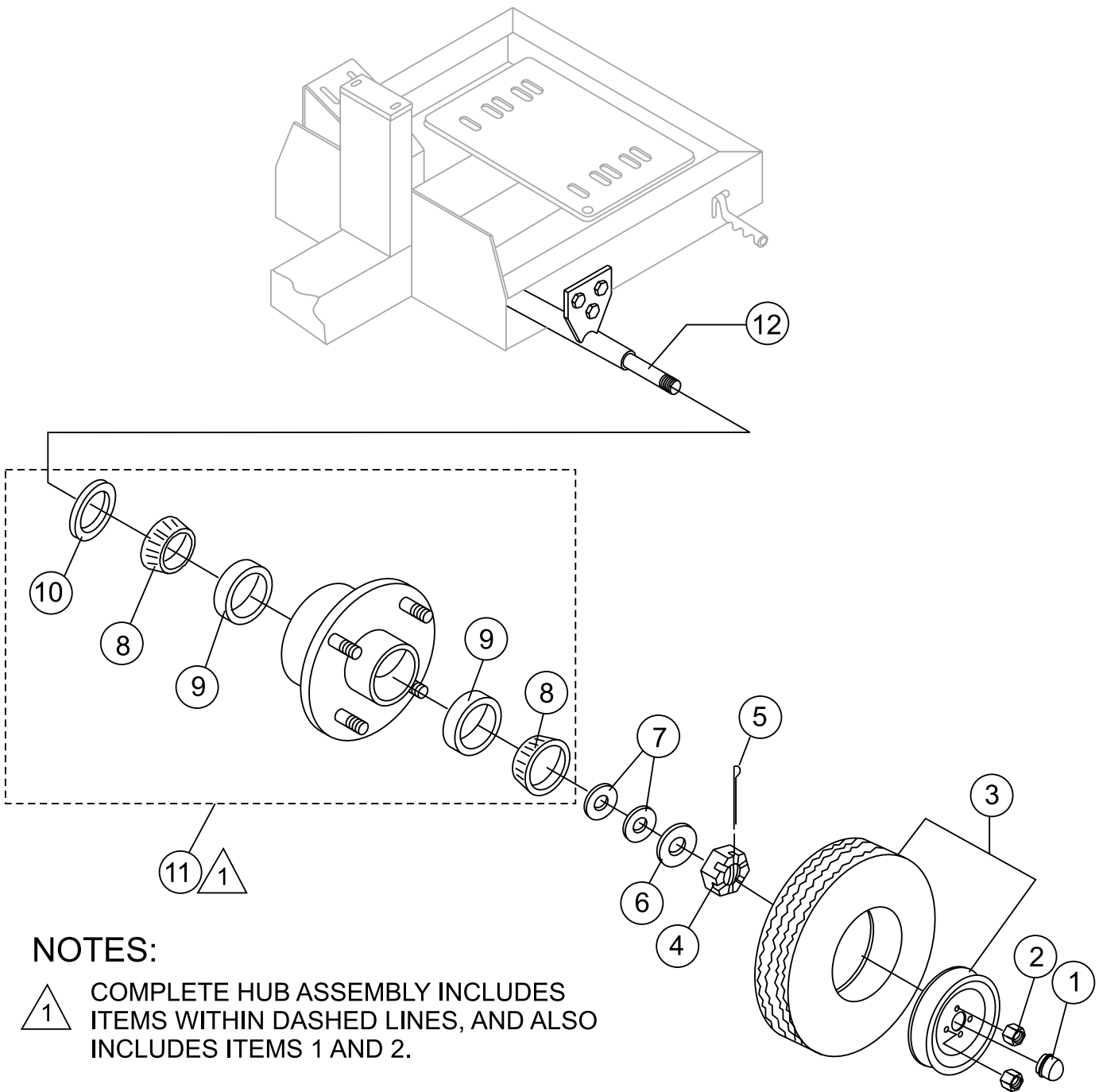


NOTES:

- △ 1 COMPLETE DRUM AND PADDLE
SHAFT ASSEMBLIES ARE INCLUDED
WITHIN DASHED LINES.

DRUM AND PADDLE SHAFT COMPLETE ASSY.

NO.	PART NO.	PART NAME	QTY.	REMARKS
1	516069	DRUM AND SHAFT COMPLETE ASSY.....	1.....	INCLUDES ITEMS LISTED BELOW
	530028	DRUM BEARING BRACKET	2	
	3249	CAP, DUST	1	
	20561-001	BEARING SEALED	2	
	491008	CAP, GREASE FITTING	2	
	EM916019	FITTING, GREASE	2	
	EM969013	NUT, LOCK 3/8"	12	
	3019092	WASHER, FLAT 3/8"	4	
	514778	TRUNNION HUB	2	
	07594-012	ROLL PIN 3/16" X 3/4"	2	
	20654-001	SEAL, SHAFT (BLACK)	2	
	530029	RING, RETENTION	2	
	20104-002	SEAL, SHAFT URETHANE (YELLOW)	2	
	513452	BOLT 3/8" NC X 1/4" G5	8	
	515009	DRUM, STEEL	1	
	EM961019	SET SCREW	2	
	530043	MAIN GEAR	1	
	10057-034	KEY, 3/8" SQ X 2.00 STEEL	1	
	EM963057	CAPSCREW HHCS 3/8 X 1-1/2"	4	
	514752	SHAFT, PADDLE	1	
	6109170	WASHER, FLAT 1/2"	2	
	514946	GRATE	1	
	EM924015	PIN, COTTER 3/16 X 1	2	
	6109160	HEX NUT 1/2-13	2	
	6109180	WASHER, LOCK 1/2"	2	
	EM963692	CAPSCREW, 1/2-13 X 1-1/2 HHCS	2	
	EM201537	HANDLE DUMP	1	
	15081	GRIP, DUMP HANDLE	1	
	514752	PADDLE SHAFT	1	
	492584	NUT, LOCK 1/2"	6	
	530142	PADDLE ARM, CENTER ENGINE END	1	
	3043	SCREW, HHC 1/2-13 X 6" G5	2	
	EM200292	INSERT, PADDLE ARM	4	
	530141	PADDLE ARM, ENGINE END	1	
	6109170	WASHER, FLAT 1/2"	6	
	EM200297	U-BOLT, END PADDLES	2	
	530143	PADDLE ARM, CENTER TOW END	1	
	505196	SCREW, 3/8 X 1-1/2 HHCS G5	18	
	EM923023	WASHER, FLAT 5/16"	28	
	25667-001	BLADE, SIDE RUBBER	4	
	25668-001	BLADE, SIDE SCRAPPER	4	
	2105164	NUT, HEX 5/16" NC G5	14	
	EM923343	WASHER, LOCK 5/16"	14	
	530140	PADDLE ARM, TOW END	1	
	33074-001	BLADE, SCRAPPER END	2	
	33017-001	BLADE, RUBBER END	2	



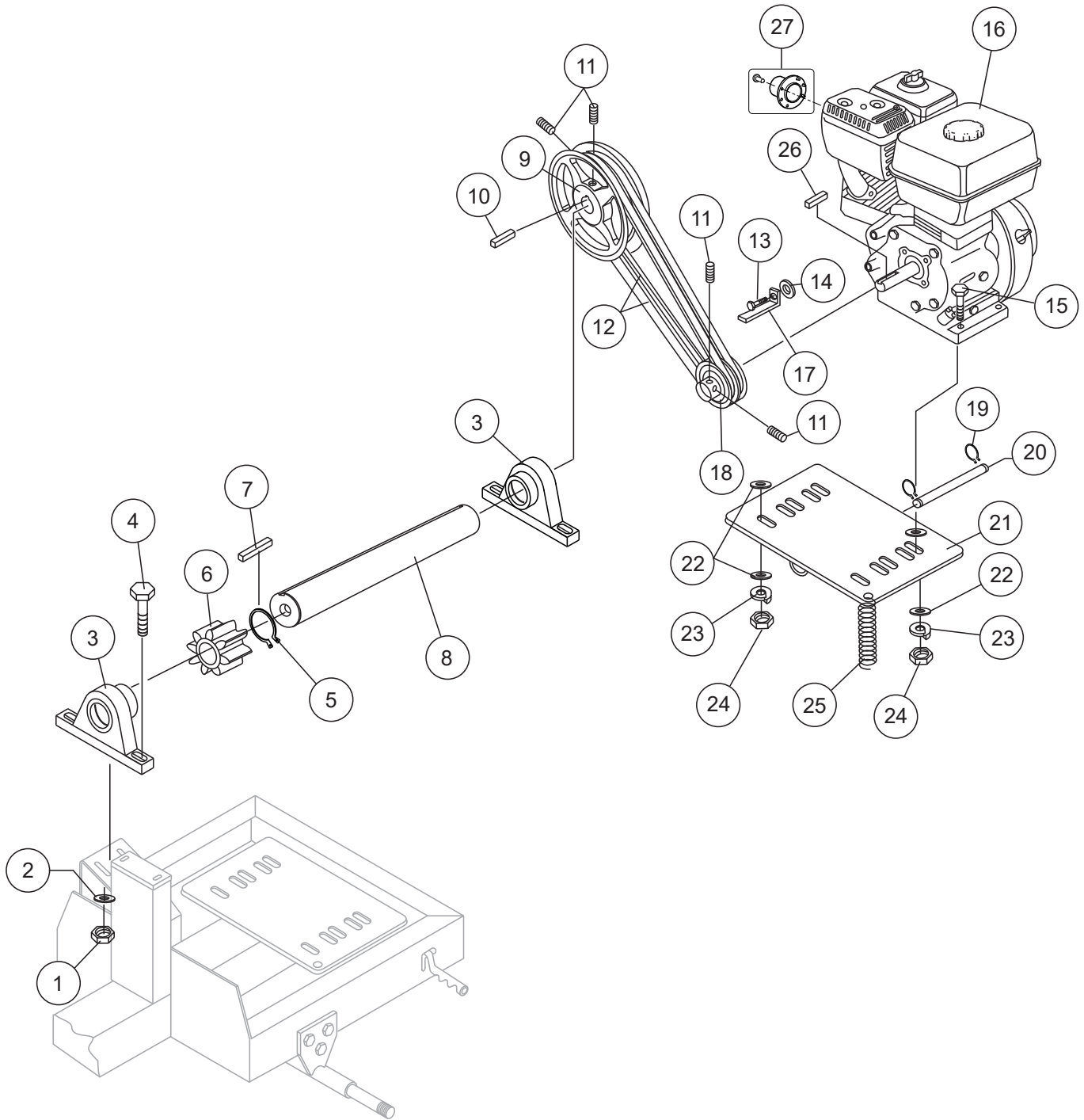
NOTES:

- △ 1 COMPLETE HUB ASSEMBLY INCLUDES ITEMS WITHIN DASHED LINES, AND ALSO INCLUDES ITEMS 1 AND 2.

AXLE ASSY.

<u>NO.</u>	<u>PART NO.</u>	<u>PART NAME</u>	<u>QTY.</u>	<u>REMARKS</u>
1#	3469	DUST CAP	2	
2#	29194	LUG NUTS	8	
3	516476	TIRE AND RIM, TOWMASTER II	2	
4	8164	CASTLE NUT 1-20 JAM	2	
5	EM924008	COTTER PIN 1/8" X 1-1/2'	2	
6	EM511159	WASHER, FLAT, .087" THICKNESS	2	
7	EM501299	WASHER, FLAT, .135" THICKNESS	1	
8#	EM903113	BEARING CONE	4	
9#	EM903012	BEARING CUP	4	
10#	EM914288	OIL SEAL	2	
11	EM941306	HUB ASSY., 4-BOLT	2.....	INCLUDES ITEMS W/#
12	514802	AXLE, UNIVERSAL	1	

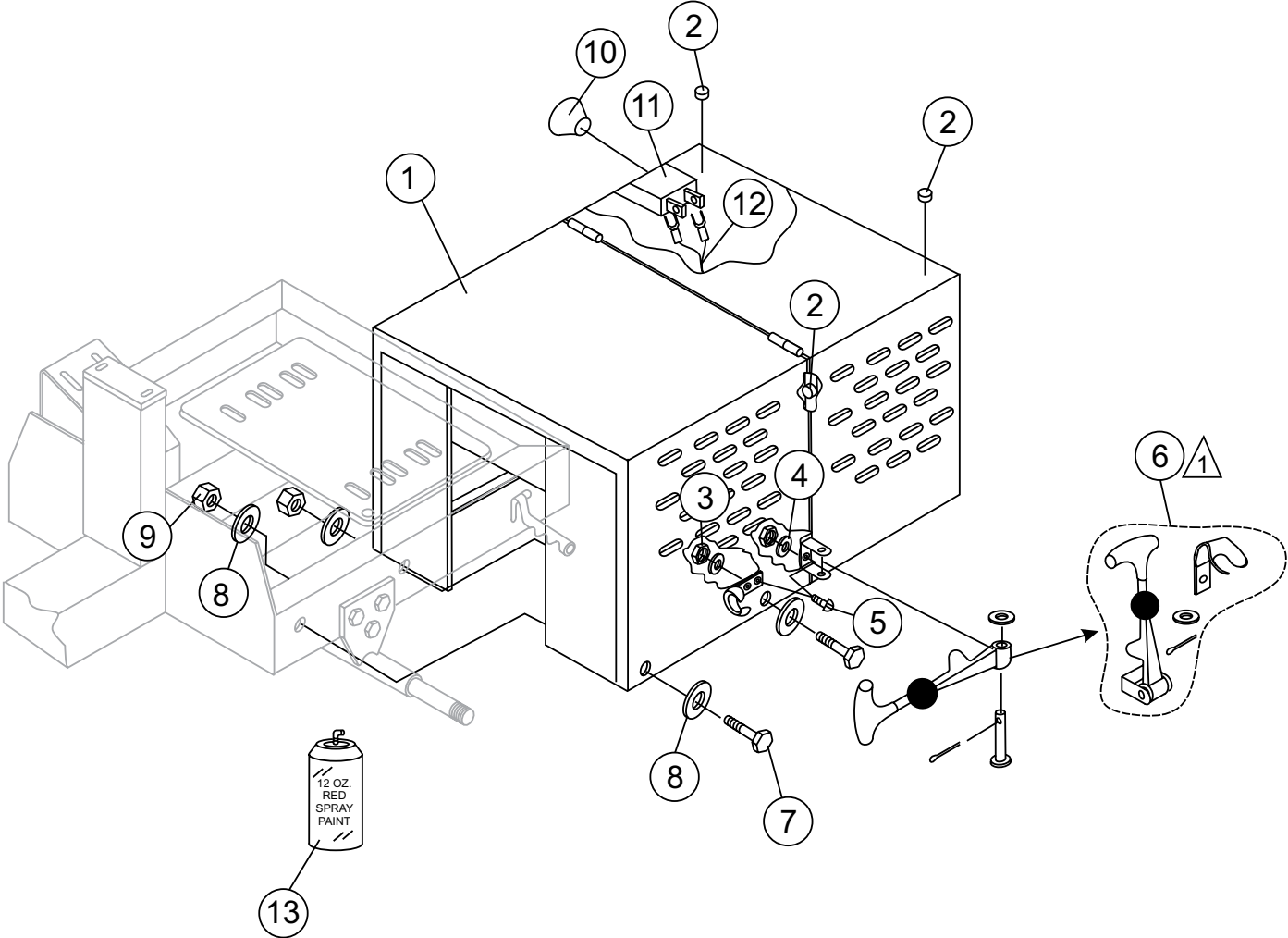
ENGINE ASSY.



ENGINE ASSY.

<u>NO.</u>	<u>PART NO.</u>	<u>PART NAME</u>	<u>QTY.</u>	<u>REMARKS</u>
1	EM969013	NUT NYLOK 3/8" NC G5	4	
2	3019092	FLAT WASHER 3/8	8	
3	EM905016	PILLOW BLOCK BEARING	2	
4	492378	BOLT 3/8" NC X 1-3/4" G5	4	
5	JISB2804C25	RING, RETAINING	1	
6	513868	PINION GEAR	1	
7	500214	KEY, SQUARE 1/4 X 1/4 X 1-1/2	1	
8	502226	PINION SHAFT	1	
9	492077	PULLEY (LARGE)	1	
10	505084	KEY, 1/4" X 55 MM	1	
11	492467	SCREWSET SCREW, 5/16" NC 3/8"	4	
12	07055-034	V-BELT, 4L340	2	
13	503117	BOLT, 3/8" NC X 3" G5	1	
14	508344	WASHER, FLAT 5/16"	1	
15	492378	BOLT 3/8 X 1-3/4 HHCS G5	4	
16	522366	ENGINE, MPOWER, 9.0 HP W/ GEAR	1	
17	514985	BELT RETAINER BAR	1	
18	505205	PULLEY (SMALL)	1	
19	604445	RETAINING RING	2	
20	530454	SHAFT, ENGINE MOUNT	1	
21	530019	ENGINE MOUNTING PLATE	1	
22	3019092	WASHER, FLAT 3/8"	6	
23	0166 A	WASHER, LOCK 3/8"	4	
24	1456	NUT, HEX FINISH 3/8-16	4	
25	EM102014	SPRING, EXTENSION	1	
26	90745ZE2600	SQ. KEY 6.3 X 6.3 X 43 MM	1	
27	522377	EXHAUST PIPE	1	

CABINET ASSY.



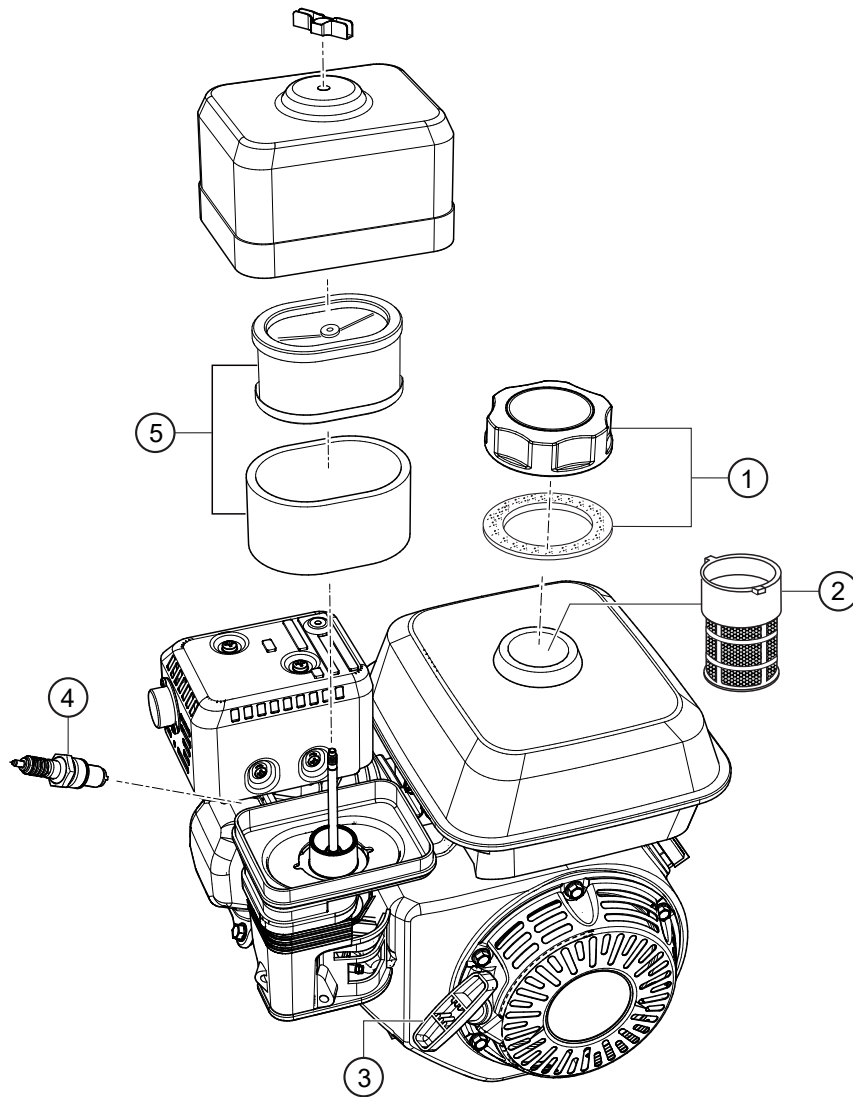
NOTES:

△ COMPLETE LATCH ASSEMBLY INCLUDES ITEMS WITHIN DASHED LINES. ITEMS CANNOT BE PURCHASED SEPARATELY.

CABINET ASSY.

<u>NO.</u>	<u>PART NO.</u>	<u>PART NAME</u>	<u>QTY.</u>	<u>REMARKS</u>
1	521995	CABINET, ENGINE W/DECALS	1.....	INCLUDES ITEMS W/\$
2	490202	RUBBER PROTECTOR	4	
3\$	13287	LOCK NUT 8-32	6	
4\$	2203	WASHER, FLAT #10	6	
5\$	1307	SCREW PHP 8-32 X 1/2"	6	
6\$	491010	LATCH ASSY., COMPLETE	2	
7	EM963610	CAP SCREW 3/8" NC X 1-1/4 G8	4	
8	3019092	WASHER, FLAT 3/8"	4	
9	EM969013	NUT NYLOK 3/8	4	
10	29174-001	KNOB, MUSHROOM	1	
11	29173-001	SWITCH, PUSH-PULL	1	
12	504135C	WIRE HARNESS	1	
13	RAL3020S	PAINT, SPRAY CAN 12 OZ., RED TRAFFIC	AR	

ENGINE SERVICE PARTS



ENGINE SERVICE PARTS

<u>NO.</u>	<u>PART NO.</u>	<u>PART NAME</u>	<u>QTY.</u>	<u>REMARKS</u>
1	16400-A0710-0008	CAP WITH GASKET, FUEL TANK	1	
2	16610-A0710-0008	FUEL FILTER CUP	1	
3	23230-A0712-0001	PULL HANDLE ASSY.	1	
4	27100-A0710-0001	SPARK PLUG, BPR6ES, NGK	1	
5	17124-A1010-0001	ELEMENT, AIR FILTER	1	

PARTS MANUAL

HERE'S HOW TO GET HELP

PLEASE HAVE THE MODEL AND SERIAL
NUMBER ON-HAND WHEN CALLING

UNITED STATES

Multiquip Inc.

(310) 537- 3700
6141 Katella Avenue Suite 200
Cypress, CA 90630
E-MAIL: mq@multiquip.com
WEBSITE: www.multiquip.com

CANADA

Multiquip

(450) 625-2244
4110 Industriel Boul.
Laval, Quebec, Canada H7L 6V3
E-MAIL: infocanada@multiquip.com

UNITED KINGDOM

Multiquip (UK) Limited Head Office

0161 339 2223
Unit 2, Northpoint Industrial Estate,
Globe Lane,
Dukinfield, Cheshire SK16 4UJ
E-MAIL: sales@multiquip.co.uk

© COPYRIGHT 2022, MULTIQUIP INC.

Multiquip Inc, the MQ logo are registered trademarks of Multiquip Inc. and may not be used, reproduced, or altered without written permission. All other trademarks are the property of their respective owners and used with permission.

This manual MUST accompany the equipment at all times. This manual is considered a permanent part of the equipment and should remain with the unit if resold.

The information and specifications included in this publication were in effect at the time of approval for printing. Illustrations, descriptions, references and technical data contained in this manual are for guidance only and may not be considered as binding. Multiquip Inc. reserves the right to discontinue or change specifications, design or the information published in this publication at any time without notice and without incurring any obligations.

Your Local Dealer is:

